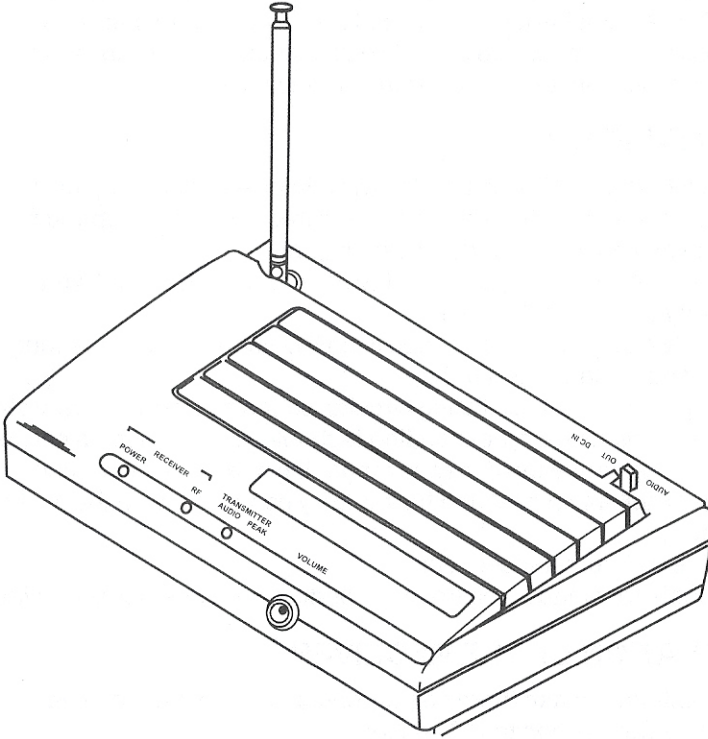




CABLEMATIC

MODEL: 3W(4W)



User Guide and Reference Manual

VHF

**PROFESSIONAL WIRELESS
MICROPHONE SYSTEM**

I. FUNCTION INTRODUCTION

Our special wireless microphone system MODEL:3W(4W) has these characteristics as the following. For many reasons, such as low frequency, traditional wireless microphone systems are easy to be interfered especially because many machines CD, VCD and LD, radiate out too many harmonics. To solve this problem we design this kind of professional wireless microphone. We adopt a series of measures to improve its functions, advance frequency, using multilevel high frequency and mid frequency narrowband filter, multiple noise detect and control. We also design its special functions (tone key locked identity) to avoid interference from outside.

II. MAIN FUNCTION

- ▲ Using VHF (180~250) Mhz band to avert interfering frequency.
- ▲ Using multilevel high frequency and mid frequency narrowband filter, so as to dispel any possible interfering signals.
- ▲ There is a volt indicating circuit in the microphone. It can tell you if it is necessary to change the battery.
- ▲ A specially designed circuit switch is on the phone. It is for clearing up waves of miscellaneous signals.
- ▲ All use quartz crystal oscillating circuits, so the frequency is very steady.
- ▲ With audio compressing-expanding technology, the machine can lower noises and increase the dynamic range. It can also lower reecho.
- ▲ Choose excellent chipset and high quality component, so that its timbre is very good.
- ▲ Under ideal circumstances: 50m
- ▲ It is suitable for stages, ballrooms, auditoria, classrooms and families.

III. OPERATION OF THE RECEIVER

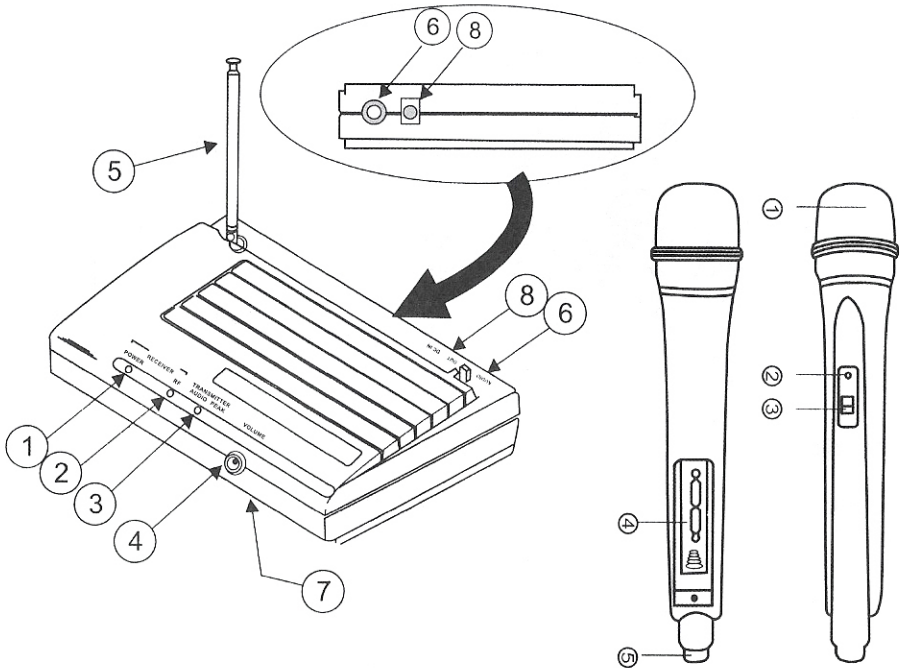
1. Pull out antenna, make them be perpendicular with the machine.
 2. Power line Connection to DC socket.
 3. Connection of the audio output: One end of the audio cable into "AUDIO OUT" socket and other end audio amplifier or mixer's "MIX IN" or "AUX IN" socket.
 4. Push the power switch, the power-indicating light is lighted.
 5. The volume of the receiver can be controlled by adjusting the volume knob.
- ★ Attention when you install of the receiver
It should be more than 1m high from the floor.
It should be more than 1m beyond the wall.
Antennas should be put out fully, Otherwise it'll influence receiving signals.

IV. OPERATION OF THE MICROPHONE

1. Open the battery box, then put in a battery.
Attention: The polarity should be right.
2. Turn on the microphone if the light does not twinkle or is always lighted, you should check the battery if the voltage is enough or the battery is well arranged.

V. RECEIVER FEATURES

1. POWER ON INDICATOR: Glows green when the receiver is powered on.
2. RF SIGNAL INDICATOR: Glows yellow when RF signals are received.
3. TRANSMITTER AUDIO PEAK INDICATOR: Flashes red when the audio signal.
4. VOLUME CONTROL: Adjusts the output volume of the receiver.
5. TELESCOPING ANTENNA: Receives signals from the transmitter.
6. AUDIO OUTPUT: Output the audio signals for connection to amplifiers.
7. PLASTIC SHELL: Receiver plastic shell.
8. POWER INPUT: Accepts power from supplied AC adapter.



VI. CONTROL AND FUNCTION(Microphone)

Transmitter.(handheld)

1: Pickup cover.

2: Low voltage indicator.

3: Power switch.

4: Battery room.

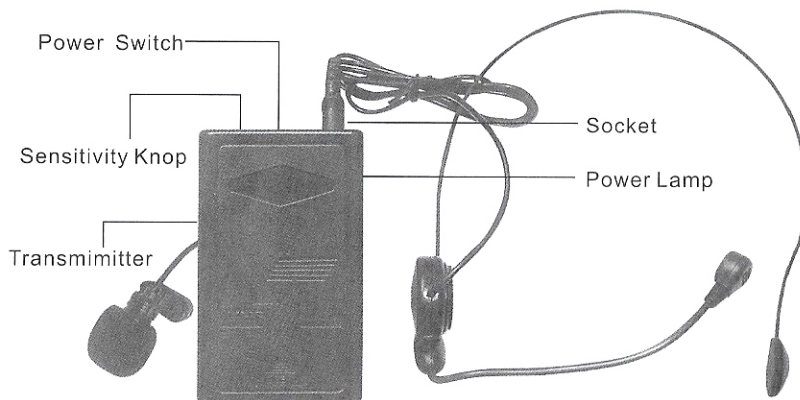
5: Color cover.

Turn it, microphone is working. Push it the middle, it is pause work.

Turn the power, indicator is flash. When the battery voltage is low, the light becomes light, you'd better change a new battery one at once.

VII. Bodypack transmitter(tie-clip or headset)

- Open the battery cover then install the battery.
- Connect the tie-clip or headset microphone cable to bodypack transmitter.
- Put the switch to "on" position, the signal lamp will shine, if it does not shine, please check the polarity of battery or test the power of battery.
- Adjust the sensitivity knob in right position of bodypack transmitter to make sure no whistle.
- Please take away the battery if don't use the system permanently.



VIII. SPECIFICATION

| | |
|----------------------------|----------------------|
| CARRIER FREQUENCY: | VHF 180~250MHZ |
| FREQUENCY STABLIZATION: | LESS THAN 30PPM |
| DYNAMIC RANGE: | MORE THAN 90db |
| TOTAL HARMONIC DISTORTION: | LESS THAN 0.5% |
| FREQUENCY RESPONSE: | 40Hz~16KHz \pm 3db |
| AUDIO OUTPUT LEVEL: | 400mv |
| POWER SUPPLY: | DC 12.5V/350ma |
| CONSUME POWER: | 3 WATTS |

ATTENTION

1. Avoid putting the main machine in a blind angle when it is used. This is for keeping signal receiving in good condition.
2. Don't throw fall, toss, cast the handling microphone when it is used, in case damage it seriously.
3. Please keep the machine from direct sunshine or rains, And put it in a place as far as possible from the magnetic field.

Free Manuals Download Website

<http://myh66.com>

<http://usermanuals.us>

<http://www.somanuals.com>

<http://www.4manuals.cc>

<http://www.manual-lib.com>

<http://www.404manual.com>

<http://www.luxmanual.com>

<http://aubethermostatmanual.com>

Golf course search by state

<http://golfingnear.com>

Email search by domain

<http://emailbydomain.com>

Auto manuals search

<http://auto.somanuals.com>

TV manuals search

<http://tv.somanuals.com>