

Operation Guide 5382/5465/5508 **CASIO®**

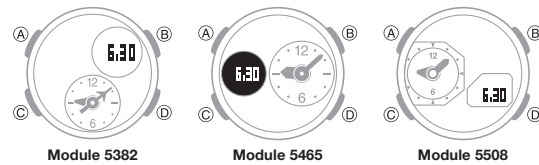
ENGLISH

Congratulations upon your selection of this CASIO watch.

E-1

About This Manual

- The operational procedures for Modules 5382, 5465 and 5508 are identical. All of the illustrations in this manual show Module 5382.
- Depending on the model of your watch, display text appears either as dark figures on a light background, or light figures on a dark background. All sample displays in this manual are shown using dark figures on a light background.
- Button operations are indicated using the letters shown in the illustration.
- Note that the product illustrations in this manual are intended for reference only, and so the actual product may appear somewhat different than depicted by an illustration.



E-2

E-3

Things to check before using the watch

1. Check the Home City and the daylight saving time (DST) setting.

Use the procedure under "To configure Home City settings" (page E-17) to configure your Home City and daylight saving time settings.

Important!

- Proper World Time Mode data depend on correct Home City, time, and date settings in the Timekeeping Mode. Make sure you configure these settings correctly.

2. Set the current time.

- See "Adjusting the Current Time and Date Settings" (page E-20).

The watch is now ready for use.

E-4

E-5

Adjusting the Current Time and Date Settings	E-20
<i>To configure the digital time and date settings</i>	E-20
Checking the Current Time in a Different Time Zone	E-24
<i>To enter the World Time Mode</i>	E-25
<i>To view the time in another time zone</i>	E-25
<i>To specify standard time or daylight saving time (DST) for a city</i>	E-26
Using the Stopwatch	E-27
<i>To enter the Stopwatch Mode</i>	E-27
<i>To perform an elapsed time operation</i>	E-28
<i>To pause at a split time</i>	E-28
<i>To measure two finishes</i>	E-28

E-6

Adjusting Hand Positions	E-38
<i>To adjust hand positions</i>	E-38
Button Operation Tone	E-40
<i>To turn the button operation tone on and off</i>	E-40
Troubleshooting	E-42
Main Indicators	E-43
Specifications	E-44

E-8

Contents

About This Manual	E-2
Things to check before using the watch	E-4
Mode Reference Guide	E-9
Timekeeping	E-15
<i>To swap your Home City and World Time City</i>	E-16
Configuring Home City Settings	E-17
<i>To configure Home City settings</i>	E-17
<i>To change the Daylight Saving Time (summer time) setting</i>	E-19

Countdown Timer	E-30
<i>To enter the Countdown Timer Mode</i>	E-30
<i>To configure the countdown timer</i>	E-31
<i>To perform a countdown timer operation</i>	E-32
<i>To stop the alarm</i>	E-32
Using the Alarm	E-33
<i>To set an alarm time</i>	E-33
<i>To test the alarm</i>	E-34
<i>To turn an alarm and the Hourly Time Signal on and off</i>	E-35
<i>To stop the alarm</i>	E-35
illumination	E-36
<i>To turn on illumination</i>	E-36
<i>To change the Illumination Duration</i>	E-36

E-7

Mode Reference Guide

The mode you should select depends on what you want to do.

To do this:	Enter this mode:	See:
• View the current time in the Home City • View the current time in one of 48 cities (31 time zones) around the globe	All Modes	E-10
• View the current date in the Home City • Configure Home City and daylight saving time (DST) settings	Timekeeping Mode	E-15 E-17
• Configure time and date settings		E-20
• Configure World Time City and daylight saving time (DST) settings	World Time Mode	E-24
• Use the stopwatch to measure elapsed time	Stopwatch Mode	E-27
• Use the countdown timer	Countdown Timer Mode	E-30
• Set an alarm time	Alarm Mode	E-33

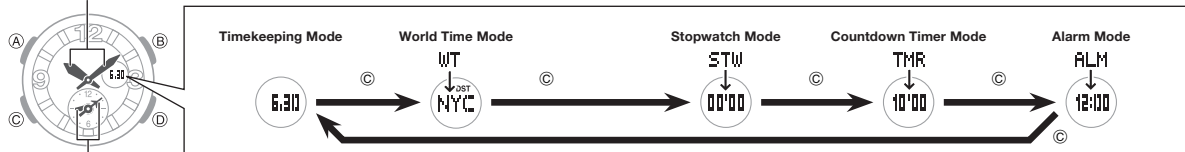
E-9

Operation Guide 5382/5465/5508 CASIO®

Selecting a Mode

- Press (C) to cycle between the modes as shown below.
- To return to the Timekeeping Mode from any other mode, hold down (C) for about two seconds.
- In any mode (except a setting mode), press (B) to illuminate the display.

Home Time : hour and minutes



World Time : hour and minutes

E-10

E-11

General Functions (All Modes)

The functions and operations described in this section can be used in all of the modes.

- Auto Return Features
The watch will automatically return to the Timekeeping Mode if you do not perform any operation for a certain amount of time, as described below.

Mode	Approximate Elapsed Time
Alarm	
Time or other setting mode (information flashing on the display)	2 to 3 minutes

• Scrolling

The (B) and (D) buttons are used on the setting mode to scroll through data on the display. In most cases, holding down these buttons during a scroll operation scrolls through the data at high speed.

E-12

Moving the Hands Out of the Way for Better Viewing

You can use the procedure below to temporarily move the hour and minute hands out of the way to better view what is on the display.

1. While holding down (B), press (C).
• This will cause the hour and minute hands to move to a location where they do not block your view of the World Time and/or digital display.

Modules 5382, 5465

Module 5508



Flashes while the hands are moved out of the way.

E-13

2. Holding down (B) again as you press (C) will cause the hands to return to their normal positions (normal timekeeping).

Note

- This operation can be performed in any mode. In the case of a setting mode (setting flashing on the screen), the hands will move out of the way automatically, even if you do not perform the above operation.
- Watch button functions are the same regardless of whether the hands are moved out of the way or at their normal positions.
- Changing to another mode will cause the hands to move back to their normal positions.
- The hands also will move back to their normal positions automatically if no operation is performed for about one hour.

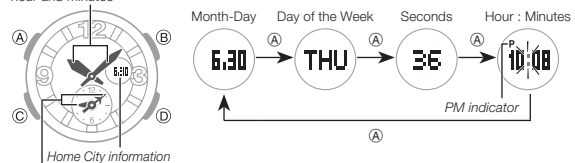
E-14

Timekeeping

Use the Timekeeping Mode to set and view the current time and date.

Home Time :
hour and minutes

- Each press of (A) cycles the Home City information as shown below.



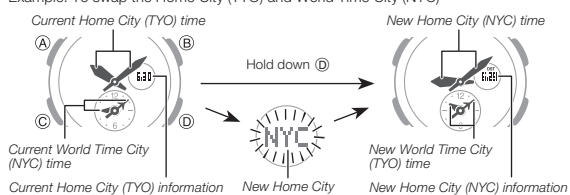
World Time :
hour and minutes

E-15

To swap your Home City and World Time City

In the Timekeeping Mode, hold down (D) for about three seconds. This swaps your Home City and World Time City.

Example: To swap the Home City (TYO) and World Time City (NYC)



E-16

Configuring Home City Settings

There are two Home City settings: actually selecting the Home City, and selecting either standard time or daylight saving time (DST).

To configure Home City settings

1. In the Timekeeping Mode, hold down (A) until ADJ appears.
 - This indicates the city code setting mode.
 - The hour and minute hands automatically move out of the way at this time (page E-13).
2. Press (D) (East) and (B) (West) to select the city code you want to use as your Home City.
 - Keep pressing (D) or (B) until the city code you want to select as your Home City appears on the display.
 - For details about city codes, see the "City Code Table" at the back of this manual.

E-17

3. After the setting is the way you want, press (A) to return to the Timekeeping Mode.

Note

- After you specify a city code, the watch will use UTC* offsets in the World Time Mode to calculate the current time for other time zones based on the current time in your Home City.
* Coordinated Universal Time, the world-wide scientific standard of timekeeping. The reference point for UTC is Greenwich, England.

E-18

To change the Daylight Saving Time (summer time) setting

DST indicator

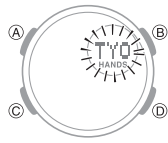
1. In the Timekeeping Mode, hold down (A) until ADJ appears.
 - This indicates the city code setting mode.
 - The hour and minute hands automatically move out of the way at this time (page E-13).
2. Press (C) to display the DST setting mode.
3. Press (D) to toggle between Daylight Saving Time (ON) and Standard Time (OFF).
 - Note that you cannot switch between daylight saving time and standard time while UTC is selected as your Home City.
4. After the setting is the way you want, press (A) to return to the Timekeeping Mode.
 - The DST indicator appears to indicate that Daylight Saving Time is turned on.

E-19

Adjusting the Current Time and Date Settings

Use the procedure below to adjust the digital time and date settings. Changing the digital time should cause the analog time setting to change accordingly.

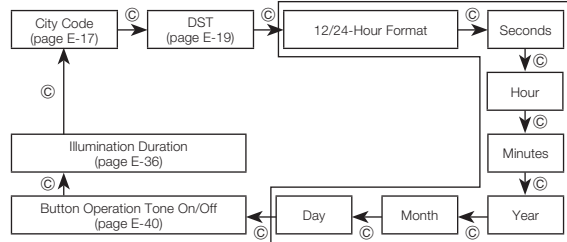
To configure the digital time and date settings



- In the Timekeeping Mode, hold down (A) until ADJ appears.
 - This indicates the city code setting mode.
 - The hour and minute hands automatically move out of the way at this time (page E-13).

E-20

- Press (C) to move the flashing in the sequence shown below to select the other settings.



E-21

- When the timekeeping setting you want to change is flashing, use (D) and/or (B) to change it as described below.

Screen	To do this:	Do this:
12H	Toggle between 12-hour (12H) and 24-hour (24H) timekeeping	Press (D).
36	Reset the seconds to 00	Press (D).
10:08	Change the hour or minute	Use (D) (+) and (B) (-).
2016	Change the year	Use (D) (+) and (B) (-).
6.30	Change the month or day	Use (D) (+) and (B) (-).

- Press (A) to exit the setting mode.

E-22

Note

- Resetting the seconds to 00 while the current count is in the range of 30 to 59 causes the minutes to be increased by 1.
- The watch's built-in full automatic calendar makes allowances for different month lengths and leap years. Once you set the date, there should be no reason to change it except after you have the watch's battery replaced.
- The day of the week changes automatically when the date changes.

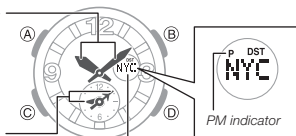
E-23

Checking the Current Time in a Different Time Zone

You can view the current time in one of 31 time zones (48 cities) around the globe. The city that is currently selected in the World Time Mode is called the "World Time City".

There are two World Time City settings: actually selecting the World Time City, and selecting either standard time or daylight saving time (DST).

Home Time : hour and minutes



World Time : hour and minutes

World Time City

E-24

To enter the World Time Mode

Use (C) to select the World Time Mode as shown on page E-10.

- The display changes as shown below.



- Press (A) to display the city code and name of the currently selected city.

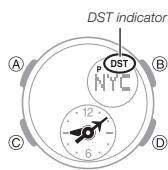
To view the time in another time zone

Pressing (D) changes the city code setting.

- Each press of (D) advances to the next city code.
- To change the city code to UTC, press (B) and (D) at the same time.

E-25

To specify standard time or daylight saving time (DST) for a city



In the World Time Mode, hold down (A) for about two seconds.

- This toggles between Daylight Saving Time (DST indicator displayed) and standard time (DST indicator not displayed).
- Note that you cannot switch between standard time/daylight saving time (DST) while UTC is selected as the World Time City.
- The standard time/daylight saving time (DST) setting affects only the currently displayed city. Other cities are not affected.

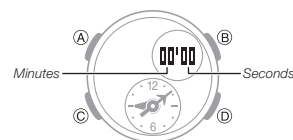
E-26

Using the Stopwatch

The stopwatch measures elapsed time, split times, and two finishes.

To enter the Stopwatch Mode

Use (C) to select the Stopwatch Mode as shown on page E-11.



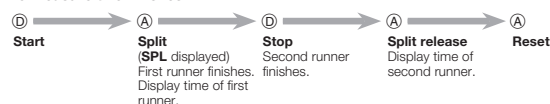
To perform an elapsed time operation



To pause at a split time



To measure two finishes



E-28

Note

- The Stopwatch Mode can indicate elapsed time up to 59 minutes, 59 seconds.
- An ongoing elapsed time measurement operation will continue internally even if you change to another mode. However, if you exit the Stopwatch Mode while a split time is displayed, the split time will not be displayed when you return to the Stopwatch Mode.

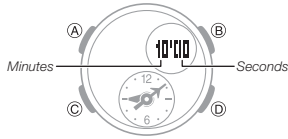
E-29

Countdown Timer

The countdown timer can be set within a range of one minute to 60 minutes. An alarm sounds when the countdown reaches zero.

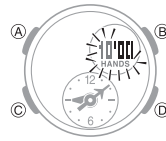
To enter the Countdown Timer Mode

Use **(C)** to select the Countdown Timer Mode as shown on page E-11.



E-30

To configure the countdown timer



- While the countdown start time is on the display in the Countdown Timer Mode, hold down **(A)** until the current countdown start time starts to flash, which indicates the setting mode.
 - The hour and minute hands automatically move out of the way at this time (page E-13).
 - If the countdown start time is not displayed, use the procedure under "To perform a countdown timer operation" (page E-32) to display it.

- Use **(D)** (+) and **(B)** (-) to change the setting.

- You can set a start time in the range of 1 to 60 minutes in 1-minute increments.

- Press **(A)** to exit the setting mode.

E-31

To perform a countdown timer operation



- Before starting a countdown timer operation, check to make sure that a countdown operation is not in progress (indicated by the seconds counting down). If it is, press **(D)** to stop it and then **(A)** to reset to the countdown start time.

To stop the alarm

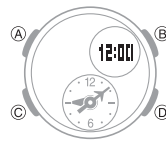
Press any button.

E-32

Using the Alarm

The watch beeps for about 10 seconds when the alarm time is reached. The hourly time signal causes the watch to beep every hour on the hour.

To set an alarm time



- Use **(C)** to select the Alarm Mode as shown on page E-11.
 - This will cause the display to change as shown below.
 - If **SIG** appears on the display, press **(D)**.



To test the alarm

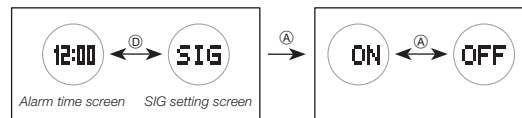
In the Alarm Mode, hold down **(D)** to sound the alarm.

E-34

- Hold down **(A)** for about two seconds until the alarm time starts to flash. This is the setting mode.
 - The hour and minute hands automatically move out of the way at this time (page E-13).
- Press **(C)** to move the flashing between the hour and minute settings.
- While a setting is flashing, use **(D)** (+) and **(B)** (-) to change it.
- Press **(A)** to exit the setting mode.

To turn an alarm and the Hourly Time Signal on and off

- In the Alarm Mode, use **(D)** to select an alarm or the Hourly Time Signal.
 - Each press of **(D)** cycles between the alarm time screen and the hourly time signal **SIG** setting screen.
- Press **(A)** to toggle the displayed setting (alarm or hourly time signal) between on and off.



To stop the alarm

Press any button.

E-33

Illumination

The face of the watch is illuminated for easy reading in the dark.

To turn on illumination

In any mode (except a setting mode), press **(B)** to illuminate the display.

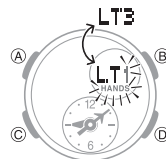
Illumination Precautions

- Illumination may be hard to see when viewed under direct sunlight.
- Illumination turns off automatically whenever an alarm sounds.
- Frequent use of illumination runs down the battery.

To change the Illumination Duration

- In the Timekeeping Mode, hold down **(A)** until **ADJ** appears.
 - This indicates the city code setting mode.
 - The hour and minute hands automatically move out of the way at this time (page E-13).

E-36



- Press **(C)** 10 times to display the illumination duration setting screen (page E-21). The screen will show either **LT1** or **LT3**.
- Press **(D)** to toggle the illumination duration setting between **LT1** (1.5 seconds) and **LT3** (3 seconds).
- After all the settings are the way you want, press **(A)** to exit the setting screen.

E-35

Adjusting Hand Positions

Strong magnetism or impact can cause the hands setting to be off. If this happens, you should adjust the hand positions.

To adjust hand positions

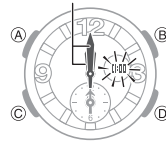
World Time hands



- In the Timekeeping Mode, hold down **(A)** for about five seconds until **H.SET** appears.
 - This indicates the World Time hands adjustment mode.
 - Though **ADJ** will appear as you hold down **(A)**, do not release the button yet.
- If the World Time hands are not at 12 o'clock, use **(D)** and **(B)** to adjust them until they are.

E-38

Hour hand and minute hand



- Press **(C)**.
 - This enters the hour and minute hand adjustment mode.
- If the hour and minute hands are not at 12 o'clock, use **(D)** and **(B)** to adjust them until they are.
- Press **(A)** to return to the Timekeeping Mode. Check to make sure that the time indicated by the hour and minute hands matches the time on the digital display. If the times don't match, perform the correction procedure above again.

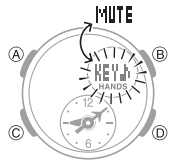
E-39

Operation Guide 5382/5465/5508 CASIO®

Button Operation Tone

You can turn the button operation tone on or off as desired.
 • Even if you turn off the button operation tone, alarms, the Hourly Time Signal, and other beepers all operate normally.

To turn the button operation tone on and off



- In the Timekeeping Mode, hold down (A) until ADJ appears.
 - This indicates the city code setting mode.
 - The hour and minute hands automatically move out of the way at this time (page E-13).
- Press (C) nine times to display the button operation tone On/Off setting screen (page E-21). The screen will show either **KEY** or **MUTE**.

E-40

E-41

Troubleshooting

Time Setting

■ **The current time setting is off by hours.**
 Your Home City setting may be wrong (page E-17). Check your Home City setting and correct it, if necessary.

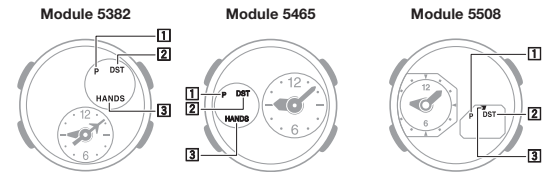
■ **The current time setting is off by one hour.**
 You may need to change your Home City's standard time/daylight saving time (DST) setting. Use the procedure under "Adjusting the Current Time and Date Settings" (page E-20) to change the standard time/daylight saving time (DST) setting.

World Time

■ **The time for my World Time City is off.**
 This could be due to incorrect switching between standard time and daylight saving time. See "To specify standard time or daylight saving time (DST) for a city" (page E-26) for more information.

E-42

Main Indicators



Number	Name	See
1	PM indicator	E-15
2	DST indicator	E-19, E-26
3	Hands shifted indicator	E-13

E-43

Specifications

- Accuracy at normal temperature:** ±30 seconds a month
Digital Timekeeping: Hour, minutes, seconds, p.m. (P), month, day, day of the week
 Time format: 12-hour and 24-hour
 Calendar system: Full Auto-calendar pre-programmed from the year 2000 to 2099
 Other: Home City code (can be assigned one of 48 city codes); Standard Time/Daylight Saving Time (summer time)
Analog Timekeeping: Hour, minutes (hand moves every 20 seconds)
World Time: 48 cities (31 time zones)
 Other: Daylight Saving Time/Standard Time
 Home City/World Time City swapping
Stopwatch:
 Measuring unit: 1 second
 Measuring capacity: 59'59"
 Measuring modes: Elapsed time, split time, two finishes

E-44

- Countdown Timer:**
 Measuring unit: 1 second
 Countdown range: 60 minutes
 Countdown start time setting range: 1 to 60 minutes (1-minute increments)
Alarms: Daily alarm; Hourly time signal
Illumination: LED (light-emitting diode); Selectable illumination duration (approximately 1.5 seconds or 3 seconds)
Other: Button operation tone on/off; Moving the Hands to View the Digital Display
Power Supply: Two silver oxide batteries (Type: SR726W)
 Approximate battery operating time: 2 years under the following conditions:
 • 1 illumination operation (1.5 seconds) per day
 • Alarm: 10 seconds/day
 Frequent use of illumination runs down the battery.

Specifications are subject to change without notice.

E-45

City Code Table

City Code Table

City Code	City name	UTC Offset/ GMT Differential	City Code	City name	UTC Offset/ GMT Differential
PPG	PAGO PAGO	-11	RAI	PRAIA	-1
HNL	HONOLULU	-10	UTC		
ANC	ANCHORAGE	-9	LIS	LISBON	0
YVR	VANCOUVER	-8	LON	LONDON	
LAX	LOS ANGELES		MAD	MADRID	
YEA	EDMONTON		PAR	PARIS	
DEN	DENVER	-7	ROM	ROME	+1
MEX	MEXICO CITY		BER	BERLIN	
CHI	CHICAGO	-6	STO	STOCKHOLM	
NYC	NEW YORK	-5	ATH	ATHENS	
SCL	SANTIAGO		CAI	CAIRO	+2
YHZ	HALIFAX	-4	JRS	JERUSALEM	
YYT	ST. JOHN'S	-3.5	MOW	MOSCOW	+3
RIO	RIO DE JANEIRO	-3	JED	JEDDAH	
FEN	F. DE NORONHA	-2	THR	TEHRAN	+3.5

L-2

City Code	City name	UTC Offset/ GMT Differential
DXB	DUBAI	+4
KBL	KABUL	+4.5
KHI	KARACHI	+5
DEL	DELHI	+5.5
KTM	KATHMANDU	+5.75
DAC	DHAKA	+6
RGN	YANGON	+6.5
BKK	BANGKOK	+7
SIN	SINGAPORE	
HKG	HONG KONG	+8
BJS	BEIJING	
TPE	TAIPEI	
SEL	SEOUL	+9
TYO	TOKYO	
ADL	ADELAIDE	+9.5
GUM	GUAM	
SYD	SYDNEY	+10

City Code	City name	UTC Offset/ GMT Differential
NOU	NOUMEA	+11
WLG	WELLINGTON	+12

- This table shows the city codes of this watch. (As of January 2016)
- The rules governing global times (UTC offset and GMT differential) and summer time are determined by each individual country.

L-3

Free Manuals Download Website

<http://myh66.com>

<http://usermanuals.us>

<http://www.somanuals.com>

<http://www.4manuals.cc>

<http://www.manual-lib.com>

<http://www.404manual.com>

<http://www.luxmanual.com>

<http://aubethermostatmanual.com>

Golf course search by state

<http://golfingnear.com>

Email search by domain

<http://emailbydomain.com>

Auto manuals search

<http://auto.somanuals.com>

TV manuals search

<http://tv.somanuals.com>