

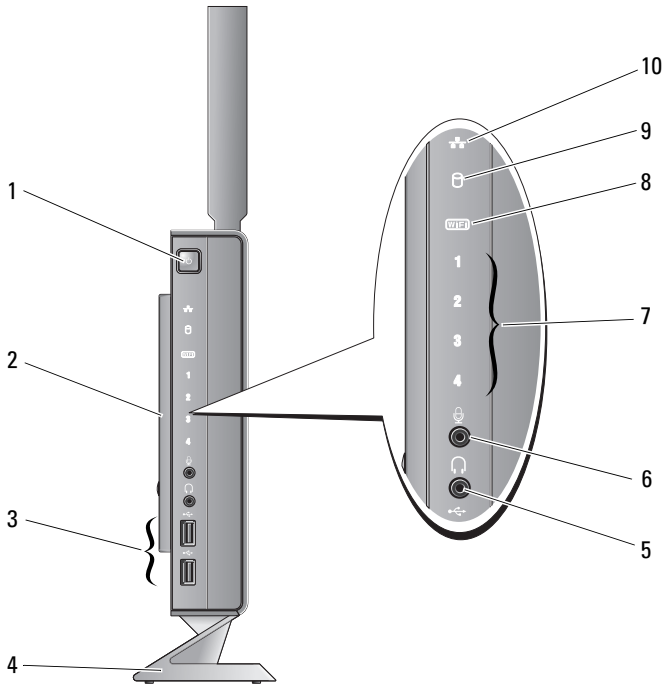


## About Warning



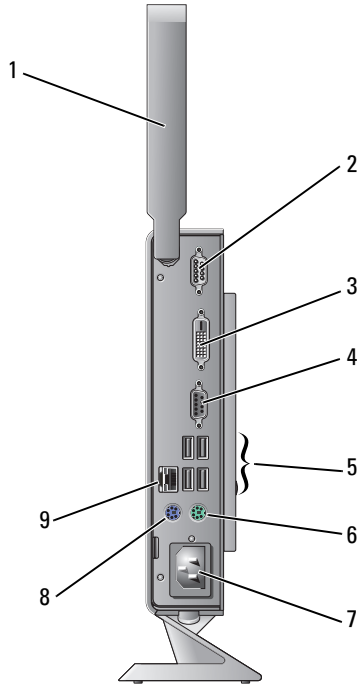
**WARNING:** A WARNING indicates a potential for property damage, personal injury, or death.

# Dell™ OptiPlex™ 160 Setup and Features Information



- |   |                               |    |                            |
|---|-------------------------------|----|----------------------------|
| 1 | power button                  | 2  | side cover                 |
| 3 | USB 2.0 connectors (2)        | 4  | stand                      |
| 5 | headphone connector           | 6  | microphone connector       |
| 7 | diagnostic lights             | 8  | Wi-Fi indicator            |
| 9 | hard drive activity indicator | 10 | network activity indicator |





- 1 wireless antenna (optional)
- 3 DVI connector
- 5 USB 2.0 connectors (4)
- 7 power connector
- 9 network connector

- 2 serial connector
- 4 VGA connector
- 6 PS/2 keyboard connector
- 8 PS/2 mouse connector

# Before Setting Up Your Computer

**⚠ CAUTION:** Keep the computer on the stand and in the vertical position. Setting up the computer horizontally (on its side) restricts airflow and can impact performance.

When positioning your computer, ensure that you allow easy access to a power source, adequate ventilation, and a level surface on which to place your computer.

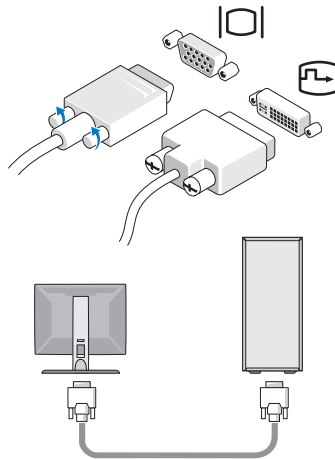
Restricting airflow around the computer may cause it to overheat. To prevent overheating ensure that you leave at least 10.2 cm (4 inches) at the back of the computer and a minimum of 5.1 cm (2 inches) on all other sides. You should never put your computer in an enclosed space, such as a cabinet or drawer when it is powered on.

## Quick Setup

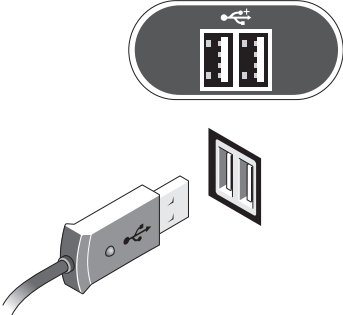
**⚠ WARNING:** Before you begin any of the procedures in this section, read the safety information that shipped with your computer. For additional safety best practices information, see the Regulatory Compliance Homepage at [www.dell.com/regulatory\\_compliance](http://www.dell.com/regulatory_compliance).

**✍ NOTE:** Some devices may not be included if you did not order them.

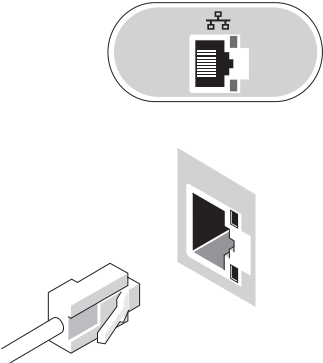
- 1 Connect the monitor using either the white DVI cable or the blue VGA cable.



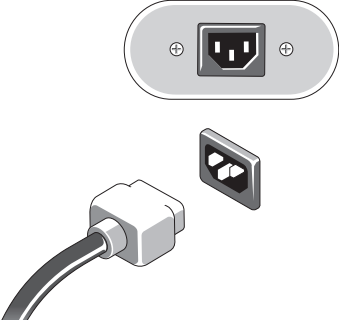
**2** Connect a USB device such as a keyboard or mouse.



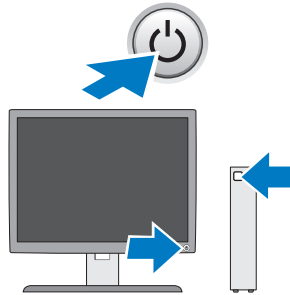
**3** Connect the network cable.



**4** Connect the power cable.



- 5 Press the power buttons on the monitor and the computer.



## Specifications



**NOTE:** The following specifications are only those required by law to ship with your computer. For a complete and current listing of the specifications for your computer, go to [support.dell.com](http://support.dell.com).

---

### Video

---

Type:

Integrated video

SiS Mirage integrated video with default 128 MB shared video memory (can be changed in BIOS setup utility)

---

### Drives

---

Available devices

one 2.5 inches internally accessible hard drive

---

### Controls and Lights

---

Front of computer:

Power button

push button

Power light

blue light — Blinking blue in sleep state; solid blue for power-on state.

amber light — A solid amber light when the computer does not start indicates that the system board cannot start initialization. This could be a system board or a power supply problem.

---

**Controls and Lights (continued)**

---

Hard drive activity light	blue light — A blinking blue light indicates the computer is reading data from or writing data to the SATA hard drive or CD/DVD.
Network activity light	blue light — A solid blue light indicates network connectivity.
Wi-Fi indicator	blue light — A solid blue light indicates the wireless network is powered on.
Diagnostic lights (1–4)	Use to troubleshoot system issues. See your <i>Service Manual</i> for information about diagnostic light codes.

**Back of computer:**

Link integrity light (on integrated network adapter)	green light — Indicates a 10 Mbps network connection orange light — Indicates a 100 Mbps network connection yellow light — Indicates a 1 Gbps network connection off (no light) — The computer is not detecting a physical connection to the network.
Network activity light (on integrated network adapter)	yellow blinking light

---

**Power**

---

**DC power supply:**

Wattage	50 W
Voltage (see the safety information that shipped with your computer for important voltage setting information)	100-240 V, ~0.8 A, 50-60 Hz

Coin-cell battery 3 V CR2032 lithium coin cell

---

**Physical**

---

Height	22.9 cm (9.02 inches) without stand 26.9 cm (10.6 inches) with stand
Width	5.4 cm (2.13 inches) with side cover 4.7 cm (1.85 inches) without side cover
Depth	25.2 cm (9.92 inches)
Weight	2.09 kg (4.6 lb) with stand

---

**Environmental**

---

## Temperature:

Operating 10° to 35° C (50° to 95° F)

Storage -40° to 65° C (-40° to 149° F)

Relative humidity 20% to 80% (noncondensing)

## Altitude:

Operating -15.2 to 3048 m (-50 to 10,000 ft)

Storage -15.2 to 10,668 m (-50 to 35,000 ft)

Airborne contaminant level G2 or lower as defined by ISA-S71.04-1985

---

**Information in this document is subject to change without notice.  
© 2008 Dell Inc. All rights reserved. Printed in the U.S.A.**

Reproduction of these materials in any manner whatsoever without the written permission of Dell Inc. is strictly forbidden.

Trademarks used in this text: *Dell*, *OptiPlex*, and the *DELL* logo are trademarks of Dell Inc.

Other trademarks and trade names may be used in this document to refer to either the entities claiming the marks and names or their products. Dell Inc. disclaims any proprietary interest in trademarks and trade names other than its own.



## Free Manuals Download Website

<http://myh66.com>

<http://usermanuals.us>

<http://www.somanuals.com>

<http://www.4manuals.cc>

<http://www.manual-lib.com>

<http://www.404manual.com>

<http://www.luxmanual.com>

<http://aubethermostatmanual.com>

Golf course search by state

<http://golfingnear.com>

Email search by domain

<http://emailbydomain.com>

Auto manuals search

<http://auto.somanuals.com>

TV manuals search

<http://tv.somanuals.com>