

Bluetooth Wireless Headset

User Manual (GBE201)



Download from [Www.Somanuals.com](http://www.Somanuals.com). All Manuals Search And Download

©2004 IOGEAR. All Rights Reserved. PKG-M0134

IOGEAR, the IOGEAR logo, are trademarks or registered trademarks of IOGEAR, Inc. Microsoft and Windows are registered trademarks of Microsoft Corporation. IBM is a registered trademark of International Business Machines, Inc. Macintosh, G3/G4 and iMac are registered trademarks of Apple Computer, Inc. All other brand and product names are trademarks or registered trademarks of their respective holders. IOGEAR makes no warranty of any kind with regards to the information presented in this document. All information furnished here is for informational purposes only and is subject to change without notice. IOGEAR, Inc. assumes no responsibility for any inaccuracies or errors that may appear in this document.

Download from www.Somanuals.com. All Manuals Search And Download

Welcome

Enjoy true hands-free freedom with the IOGEAR Wireless Bluetooth Headset. This ultra-lightweight headset enables you to wirelessly use your Bluetooth cell phone, ending messy and potentially dangerous wire tangles. The IOGEAR Bluetooth Headset will clearly transmit all your phone calls wirelessly to your phone via Bluetooth radio technology.

Its stylish and compact design makes it very easy and comfortable to wear.

Among its many features are a built-in rechargeable battery for long battery life, easy-to-reach volume control, and ear hook for secure wearing.

Welcome

The GBE201 follows the Bluetooth 1.1 specification and supports the headset and hands-free profile.

The Bluetooth headset also comes with a USB charger cable to make it convenient for mobile users to charge the unit while on the road.

Table of Contents

Package Contents	2	Specification	42
Features	3	Technical Support	43
System Requirements	4	Radio & TV Interference	
Introduction	5	Statement	45
Pairing to Bluetooth Phone	12	Limited Warranty	46
How to use headset			
• Making a call	17		
• Ending a call	19		
• Answering a call	21		
Connecting Headset			
to PC/laptop	23		
FAQ/Troubleshooting	40		

Package Contents

- 1 Bluetooth headset
- 1 Ear hook
- 1 Neck strap
- 1 Power adapter
- 1 USB charging cable
- 1 User manual
- 1 Warranty/Registration card

Features

- Hands-free communications via your Bluetooth cell phone
- Use headset on your PC/Laptop to make calls using programs like Skype, MSN messenger, etc.
- Compatible with Bluetooth 1.1 specifications
- Support both Headset profile and Hands-free profile
- Easy operation and comfortable wear
- Ear hook included to ensure secure wearing
- Volume control included
- Built-in re-chargeable battery
- Light and attractive design

Requirements

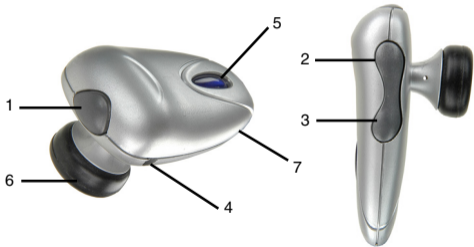
Bluetooth cell phone with either Headset profile or Hands-free profile

Introduction

1. Multi-function – used to turn headset ON/OFF, set it in discovery mode for pairing, and answer/terminating calls
2. Volume up – increase the volume on the headset
3. Volume down – decrease the volume on the headset
4. Power jack – insert power cable to charge internal battery
5. LED window – displays red and blue LEDs
6. Speaker – this is the speaker for incoming voice calls
7. Microphone – this is the microphone for outgoing voice calls

please refer to the picture on the next page

Introduction



LED Indicator lights

Blue LED:

- Flashes approximately every six (6) seconds when the headset is ON (standby mode)
- Flashes very rapidly when in discovery mode to pair with your Bluetooth phone

Red LED:

- Remains ON while headset is charging and also when in discovery mode
- Flashes when the headset battery is low.

Introduction

Turn ON the headset

1. Press and hold the multi-function button for about six (6) seconds; the blue LED will flash quickly four (4) times. Thereafter, it will flash once every six seconds.

Turn OFF the headset

1. Press and hold the multi-function button for about three (3) seconds; the red LED will flash four (4) times and then turn off.

Charging the Battery

You must charge the internal battery of the Bluetooth headset before your first use. Thereafter, the red LED will flash when the battery is low and emit a warning sound.

To charge the battery, follow the procedure below:

1. Turn OFF the headset
2. Connect either the *USB charger cable* or *AC adapter* into the power jack of the Bluetooth headset
3. The Red LED will remain ON while the headset is charging. Once the headset is fully charged, the red LED will turn OFF. It takes about 2.5 hours to fully charge the headset.

A fully-charged battery will give you approximately 4.5 hours of talk time, and 100 hours stand-by time.

Introduction

Attaching ear hook (for right ear wearing)

1. Position the headset with the speaker pointing inward (see image on the next page)
2. Position the ear hook with the clip-on facing down
3. Snap the ear hook onto the neck of the speaker

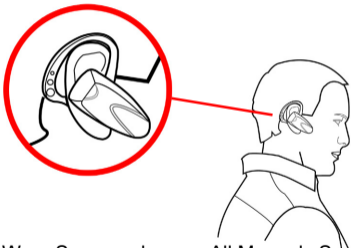
TIP: To use the headset on the left ear, follow the steps as above, except that on #1, position the headset with the speaker pointing outward.

Placing headset on your ear

1. Wrap the ear hook around your ear
2. Insert the speaker piece into your ear

please see image on next page

Introduction



Pairing to Bluetooth Phone

Pairing Procedure

Pairing is a Bluetooth function that enables Bluetooth devices to remain permanently linked to each other. By pairing devices, you only need to authenticate and authorize communication between your devices once. During the pairing procedure, a PIN code is required for secure authentication. Thereafter, communication between your two Bluetooth devices is done automatically without requiring authentication or confirmation.

For the procedure below, you will need to know how to use your cell phone's Bluetooth feature for discovering, connecting, and pairing to other Bluetooth devices. If you're not sure how to do this, please consult your cell phone user manual.

Pairing to Bluetooth Phone

To pair the IOGEAR Bluetooth headset with your Bluetooth phone, follow the procedure below:

1. Make sure that the IOGEAR Bluetooth headset is OFF.
2. Press and hold the multi-function button for about nine (9) seconds; the red LED will turn ON and the blue LED will start rapidly flashing; the headset is now in pairing mode.

NOTE: If only the blue LED is on, the headset is in stand-by mode; repeat the step again and make sure the red LED is on and blue LED is blinking. The Bluetooth headset will remain in pairing mode for approximately five minutes. If no pairing takes place during that time interval, it will switch to stand-by mode.

Pairing to Bluetooth Phone

3. Follow your cell phone's instructions to search for Bluetooth devices. The IOGEAR Bluetooth headset will show up as "IOGEAR BT Headset." If the headset is not found on your first attempt, try again as it may take a few tries the first time you search for the device.
4. Select the Bluetooth headset ("IOGEAR BT Headset") and select the pairing option. If you are prompted for a PIN code, enter "1234"
5. You are now paired to the headset!

Below are two examples for your reference. The instructions will vary depending on the brand/model of phone that you have. If you still have problems using the Bluetooth functionality of your phone, please consult your cell phone's user manual.

Pairing to Bluetooth Phone

Example 1 – Nokia 3650

1. Make sure that the IOGEAR Bluetooth headset is OFF.
2. Set the Bluetooth headset in **pairing mode** as indicated in the pairing procedure.
3. Nokia 3650 pairing procedure:
 - a. Go to the phone menu
 - b. From the list, select Connectivity
 - c. Click on Bluetooth, and then select Options
 - d. Now, click on "New paired device" – this will start searching for the Bluetooth headset
 - e. The headset will be displayed as "IOGEAR BT Headset"
 - f. Select the headset and when prompted for a Passcode/PIN, enter "1234"
4. You are now paired to the IOGEAR Bluetooth headset!

Pairing to Bluetooth Phone

Example 2 – Sony Ericsson T616

1. Make sure that the IOGEAR Bluetooth headset is OFF.
2. Set the Bluetooth headset in **pairing mode** as indicated in the pairing procedure.
3. Ericsson T616 pairing procedure:
 - a. Access the main menu
 - b. Select the "Connect" option and then select Bluetooth
 - c. Make sure Bluetooth function is turned ON (if not click on Turn On)
 - d. Go down to the option "My Devices" to see a list of Bluetooth devices
 - e. To search for the Bluetooth headset, click on "New Device" which will start looking for the Bluetooth headset
 - f. The headset will be displayed as IOGEAR BT Headset.
 - g. Select it and when prompted for a Passcode/PIN, enter "1234" and then select OK
4. You are now paired to the IOGEAR Bluetooth headset!

How to Use Headset

Before proceeding, please check the following:

First, make sure that you have already paired the Bluetooth headset with your cell phone. Otherwise, you will be prompted to authorize the connection every time the Bluetooth headset communicates with your phone. Please refer to the section "Pairing to Bluetooth Phone" for additional information.

Making a call

1. Put on the Bluetooth headset (make sure that it's turned on).
2. Dial the desired number using your phone's keypad
3. Press the connect/send button to initiate the call
4. The call should automatically be transferred to the Bluetooth headset.

How to Use Headset

NOTE: If the phone call is not automatically transferred to the Bluetooth headset, press the multi-function button once to transfer the call to the headset. Your phone may prompt you if you wish to accept the connection from the Bluetooth headset; simply click Yes/OK.

If you still cannot get your phone to transfer calls to the Bluetooth headset, we suggest you to consult your cell phone's user manual for instructions on configuring your phone to use with a headset.

How to Use Headset

Ending a call

If you wish to terminate a call while using the Bluetooth headset, please do the following:

1. Press the multi-function button once to hang up
2. You should now hear a beep sound from the headset indicating call has terminated

Alternatively, you can terminate the phone call in the usual way using your cell phone's keypads.

How to Use Headset

Redial a number

If you wish to redial the last number using the Bluetooth headset, please follow the procedure below:

1. Press and hold any of the volume buttons (volume up or volume down) for approximately 3-5 seconds.

Note: If your phone has not previously used the headset, this may take longer as the phone will ask for confirmation to use the Bluetooth headset

2. Your cell phone will start redialing the last number

How to Use Headset

Answering a call

Before proceeding, make sure you have already paired your Bluetooth phone and headset.

1. Put on the Bluetooth headset (make sure that it's turned on).
2. When you hear the ring tone on the headset, simply press the multi-function button once to pick up the call.

Note: If the call is being transferred to your cell phone directly instead of the Bluetooth headset, press the multi-function button once on the headset to force your phone to use the headset.

If you still cannot get your phone to transfer calls to the Bluetooth headset, we suggest you to consult your cell phone's user manual for instructions on configuring your phone to use with a headset.

How to Use Headset

Reject a call

To reject a call using the headset, do the following:

1. You will hear the ringing tone on your Bluetooth headset
2. Press and hold the multi-function button for 3 seconds until your phone stops ringing

Connecting Headset to PC/laptop

The IOGEAR Bluetooth headset can also be used on your PC/Laptop. Why would you want to use your headset on your computer? The answer is simple:

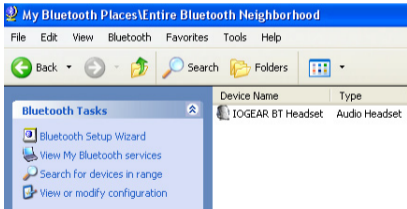
- **Voice Over IP**

Please note that in order for this to work, the Bluetooth software on your PC/Laptop, must support the Headset profile. For the examples shown below, we used the WIDCOMM Bluetooth software v3.0.x which supports Headset profile.

If you're not sure what profiles your Bluetooth software supports, please check with the vendor of your Bluetooth device/software.

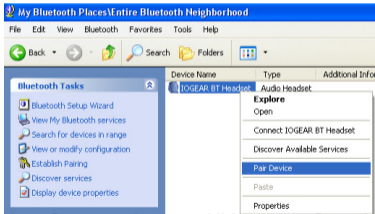
Connecting Headset to PC/Laptop

1. Open My Bluetooth Places and click on *Search for devices in range*. The headset will be displayed as "IOGEAR BT Headset"



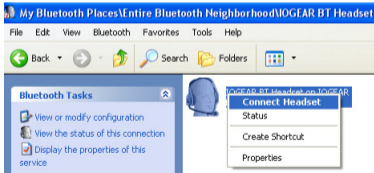
Connecting Headset to PC/Laptop

- Right-click on the icon representing the IOGEAR headset, and select "Pair Device." When prompted for a PIN code, enter "1234"



Connecting Headset to PC/Laptop

- To access the services offered by the headset, double-click the IOGEAR headset icon. Now, right click on the icon displayed below and select "Connect Headset."



Connecting Headset to PC/Laptop

- Upon successful connection, the icon will turn green and it will say "connected" as shown below. Also note that the Bluetooth icon on your tray bar will turn green.



Connecting Headset to PC/Laptop

5. If you hear a long-beep sound on the headset, click the multi-function button once to transfer the audio on your computer to the headset.

Connecting Headset to PC/Laptop

Voice Over IP

With Voice-Over-IP programs, you can use your Internet connection to make calls to your family/friends over the Internet. Examples of these are chat programs that let you have voice conversations such as MSN messenger, yahoo messenger, etc. The instructions below are provided as an example, but they should work for most Voice-Over-IP programs, with minor configuration necessary. Here we show two examples of Voice-OVER-IP programs:

- SKYPE
- MSN Instant Messenger

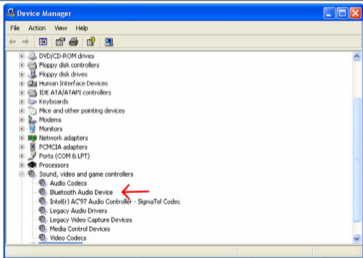
Connecting Headset to PC/Laptop

Bluetooth Audio Drivers

Before proceeding, you need to check that your Bluetooth software has properly installed all Audio drivers necessary; otherwise, you will not be able to use the Bluetooth headset as an audio device. To verify this, go to Control Panel and look under **Sound, video and game controllers**, as shown below.

In our example, you can see that the Bluetooth audio drivers have been added to our system and appear as "**Bluetooth Audio Device**" (the name and location might vary in your case). If your system does not show any Bluetooth audio drivers that you can see, please consult your Bluetooth software manual or check with your device vendor.

Connecting Headset to PC/Laptop



Connecting Headset to PC/Laptop

SKYPE

Configure software

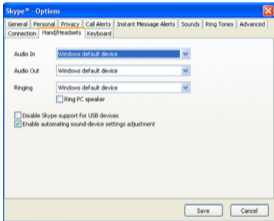
Before you can use the Bluetooth headset with your Voice-Over-IP program, you need to first specify the headset as the source for Audio-IN and Audio-OUT.

1. First, click on the File menu and select Options



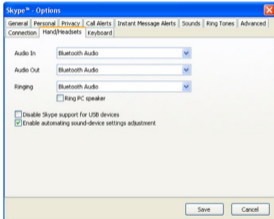
Connecting Headset to PC/Laptop

- Now go to the Hand/Headsets tab. As you see below, the sound device specified is the Windows default device (most likely your PC/Laptop speakers).



Connecting Headset to PC/Laptop

3. Click on each of the menu options and select **Bluetooth Audio** and then click Save. **NOTE:** The name of the audio device shown here is what was displayed in Control Panel under the *Sound, video and game controllers* section.



Connecting Headset to PC/Laptop

4. You should now be able to use the IOGEAR Bluetooth headset as your audio device with your Voice-Over-IP software. If you encounter any problems, please consult your software documentation.

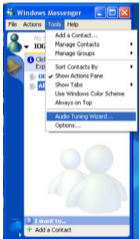
Connecting Headset to PC/Laptop

MSN Messenger Voice chat

Configure software

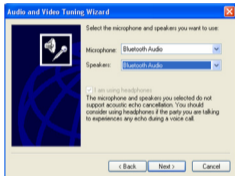
Before you can use the Bluetooth headset with your Voice-Over-IP program, you need to first specify the headset as the source for Audio-IN and Audio-OUT.

1. First, click on the Tools menu and select Audio Tuning Wizard



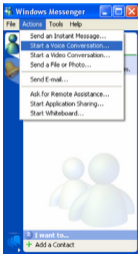
Connecting Headset to PC/Laptop

2. When prompted to specify your Audio device, make sure to select **Bluetooth Audio**, and then click Next. **NOTE:** The name of the audio device shown here is what was displayed in Control Panel under the *Sound, video and game controllers* section.



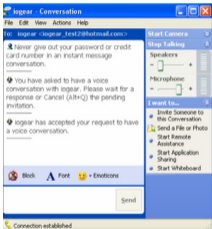
Connecting Headset to PC/Laptop

- Once the wizard has completed, click on **Actions > Start a Voice Conversation**, and select the person you want to invite to your conversation.



Connecting Headset to PC/Laptop

4. You are done!



FAQ/Troubleshooting

Q1. My Bluetooth phone cannot find the IOGEAR Bluetooth headset, what is wrong?

Please make sure that you have set the headset in pairing mode (discoverable mode) as indicated in the "Pairing Procedure" section of this manual. Please keep in mind that if the Blue LED is blinking, but the red LED is off, the headset is in stand-by mode. In order for the headset to be in pairing mode, the blue LED must be blinking and red LED must be ON.

Q2. Why won't my Bluetooth headset turn on?

Before you can use the IOGEAR Bluetooth headset, you must fully charge it for at least 2.5 hours.

Q3. What Bluetooth phones are compatible with the IOGEAR Bluetooth headset?

Most phones that are compatible with the Headset or Handsfree profile should work with the headset. If your phone is Bluetooth-enabled, but does not support either of these profiles, it will not work with the headset. Please check with your phone manufacturer if you're not sure.

Q4. How do I use the USB charging cable?

Simply connect the USB charging cable to an available USB port on your computer to charge the IOGEAR Bluetooth headset. Make sure that your computer is turned ON so that it provides power to the headset. Please note that if you connect the charging cable to a USB non-powered hub, the headset may not receive enough power to charge.

Specifications

Function	GBE201	
Protocols	Bluetooth 1.1, Class 2	
Security	Pairing	
Power Consumption	0.72W; 2.5 hours charging time; 4.5 hours talk time; 100 hours standby	
Profiles Supported	Hands free profile and Headset profile	
Radio Frequency	2.402 GHz -2.4835 GHz Unlicensed ISM band	
Dimensions	Height	.46 in. (1.2 cm.)
	Length	2.20 in. (5.6 cm.)
	Width	.94 in. (2.4 cm.)
Weight	Unit Wt.	.0286 Lbs (13 grams)

Technical Support

To help IOGEAR® customers obtain the highest level of performance from their ION™ Drive, the IOGEAR Service Support team is available to answer your technical questions.

Please be sure to visit our Technical Information Library (TIL) is available on our website: <http://www.iogear.com/support> . Our TIL has answers to many common questions and problems that may already have solutions available.

IOGEAR Service & Support can be reached from 8am to 5pm (PST) Monday through Friday, or at the following address:

23 Hubble Drive, Irvine, CA 92618

Technical Support

866-9-IOGEAR (866-946-4327) (Press "4" for Technical Support)

You may also e-mail us 24-hours a day, 7 days a week by sending your inquiry to: support@iogear.com.

Please Note: We will generally respond to your inquiry within 24-48 hours; however, due to increasing demand for pre-sales and technical information for our products, response times can and may fluctuate. Therefore, if you have an urgent inquiry, we recommend calling our Service Support Department for immediate assistance.

Please be ready to give a brief description of the problem, and what you were doing when the problem occurred, before calling Service Support.

Radio & TV Interference Statement

WARNING!!! This equipment generates, uses and can radiate radio frequency energy and, if not installed and used in accordance with the instruction manual, may cause interference to radio communications. This equipment has been tested and found to comply with the limits for a Class B computing device pursuant to Subpart J of Part 15 of FCC Rules, which are designed to provide reasonable protection against such interference when operated in a commercial environment. Operation of this equipment in a residential area is likely to cause interference, in which case the user at his own expense will be required to take whatever measures may be required to correct the interference.

Warranty

IN NO EVENT SHALL THE DIRECT VENDOR'S LIABILITY FOR DIRECT, INDIRECT, SPECIAL, INCIDENTAL OR CONSEQUENTIAL DAMAGES RESULTING FROM THE USE OF THE PRODUCT, DISK, OR ITS DOCUMENTATION EXCEED THE PRICE PAID FOR THE PRODUCT.

The direct vendor makes no warranty or representation, expressed, implied, or statutory with respect to the contents or use of this documentation, and especially disclaims its quality, performance, merchantability, or fitness for any particular purpose.

Warranty

The direct vendor also reserves the right to revise or update the device or documentation without obligation to notify any individual or entity of such revisions, or updates. For further inquires please contact your direct vendor.



Contact info.

Download from [Www.Somanuals.com](http://www.Somanuals.com). All Manuals Search And Download
23 Hubble • Irvine, CA 92618 • (P)949.453.8782 • (F)949.453.8785 • www.iogear.com

Free Manuals Download Website

<http://myh66.com>

<http://usermanuals.us>

<http://www.somanuals.com>

<http://www.4manuals.cc>

<http://www.manual-lib.com>

<http://www.404manual.com>

<http://www.luxmanual.com>

<http://aubethermostatmanual.com>

Golf course search by state

<http://golfingnear.com>

Email search by domain

<http://emailbydomain.com>

Auto manuals search

<http://auto.somanuals.com>

TV manuals search

<http://tv.somanuals.com>