

Acoustics **Limited** Warranty

Kicker warrants this product to be free from defects in material and workmanship under normal use for a period of THREE (3) MONTHS from date of original purchase with receipt. When purchased from an Authorized KICKER Dealer it is warranted for ONE (1) YEAR from date of original purchase with receipt. In all cases you must have the original receipt. Should service be necessary under this warranty for any reason due to manufacturing defect or malfunction during the warranty period, Kicker will repair or replace (at its discretion) the defective merchandise with equivalent merchandise at no charge. Warranty replacements may have cosmetic scratches and blemishes. Discontinued products may be replaced with more current equivalent products.

This warranty is valid only for the original purchaser and is not extended to owners of the product subsequent to the original purchaser. Any applicable implied warranties are limited in duration to a period of the express warranty as provided herein beginning with the date of the original purchase at retail, and no warranties, whether express or implied, shall apply to this product thereafter. Some states do not allow limitations on implied warranties; therefore these exclusions may not apply to you. This warranty gives you specific legal rights; however you may have other rights that vary from state to state.

WHAT TO DO IF YOU NEED WARRANTY OR SERVICE

Defective merchandise should be returned to your local Authorized Stillwater Designs (Kicker) Dealer for warranty service. Assistance in locating an Authorized Dealer can be found at www.kicker.com or by contacting Stillwater Designs directly. You can confirm that a dealer is authorized by asking to see a current authorized dealer window decal.

If it becomes necessary for you to return defective merchandise directly to Stillwater Designs (Kicker), call the Kicker Customer Service Department at (405) 624-8510 for a Return Merchandise Authorization (RMA) number. Package only the defective items in a package that will prevent shipping damage, and return to:

Stillwater Designs, 5021 North Perkins Road, Stillwater, OK 74075

The RMA number must be clearly marked on the outside of the package. Please return only defective components. The return of functioning items increases your return freight charges. Non-defective items will be returned freight-collect to you. For example, if a subwoofer is defective, only return the defective subwoofer, not the entire enclosure.

Include a copy of the original receipt with the purchase date clearly visible, and a "proof-of-purchase" statement listing the Customer's name, Dealer's name and invoice number, and product purchased. Warranty expiration on items without proof-of-purchase will be determined from the type of sale and manufacturing date code. Freight must be prepaid; items sent freight-collect, or COD, will be refused.

WHAT IS NOT COVERED?

This warranty is valid only if the product is used for the purpose for which it was designed.

It does not cover:

- o Damage due to improper installation
- o Subsequent damage to other components
- o Damage caused by exposure to moisture, excessive heat, chemical cleaners, and/or UV radiation
- o Damage through negligence, misuse, accident or abuse. Repeated returns for the same damage may be considered abuse
- o Any cost or expense related to the removal or reinstallation of product
- o Speakers damaged due to amplifier clipping or distortion
- o Items previously repaired or modified by any unauthorized repair facility
- o Return shipping on non-defective items
- o Products with tampered or missing barcode labels
- o Products returned without a Return Merchandise Authorization (RMA) number
- o Freight Damage
- o The cost of shipping product to Kicker
- o Service performed by anyone other than Kicker

HOW LONG WILL IT TAKE?

Kicker strives to maintain a goal of 24-hour service for all acoustics (subwoofers, midrange drivers, tweeters, crossovers, etc) returns. Delays may be incurred if lack of replacement inventory or parts is encountered.

Failure to follow these steps may void your warranty. Any questions can be directed to the Kicker Customer Service Department at (405) 624-8510. Contact your International Kicker dealer or distributor concerning specific procedures for your country's warranty policies.

© 2006 Stillwater Designs



KICKER®

COMPVT SUBWOOFER ENCLOSURE

TCVT12, TCVT10



COMPVT SUBWOOFER Enclosure Owner's Manual

Models: TCVT12 / TCVT10

Congratulations on your KICKER purchase
Please record your purchase information and keep your sales receipt for validation of warranty.

Authorized Kicker Dealer: _____
Purchase Date: _____
Enclosure Model Number: _____
Enclosure Serial Number: _____

The Kicker CompVT subwoofer enclosures were specially designed for "Livin' Loud" out in the harsh automotive environment. They are made of advanced materials and construction techniques to maintain optimal performance for years to come.

CheckTheLoad

The CompVT subwoofer enclosures are internally wired for a 2 or 4 ohm load at the speaker-wire connection terminal. Please refer to this terminal or the box packaging for your enclosure's specific impedance. Check to see if your amplifier is optimized to drive this load.

TCVT Sealed

The TCVT Series sealed enclosures combine KICKER's award winning line of subwoofers with computer-modeled and human fine-tuned enclosures to offer a level of bass performance never before thought possible from a commercially available, ready-to-install subwoofer system. The TCVT Series enclosures are available with a 10 or 12 inch CompVT subwoofer.

The Kicker TCVT Series enclosure is designed to fit behind the seat of a pickup truck, coupe or wherever space is limited. This design is engineered to provide the best bass response when firing into the back of the seat.

Please note: The reason the TCVT enclosure is so *slim and fit*, is because we have added a thin metallic "Clarence" plate to allow room for the CompVT's massive magnet and motor structure.

Plug your subwoofer speaker wire into the terminals, using the red connector as positive and the black connector as negative. Hook the other end of the wire to your subwoofer amplifier in accordance with its owner's manual.

CompVT Subwoofer - Covered by one or more of the following patents:
U.S. Pat #'s 6,611,604, 6,731,773 D473,216, D456,386, D449,293,
D355,193, Taiwan Pat. #162,154; Other U.S. and foreign patents pending.

Performance

Model:	TCVT10	TCVT12
Nominal Impedance [Zn], ohm [per enclosure]	2 or 4	2 or 4
Sensitivity [SPLo], dB @ 1W, 1m	96.5	98
Power Handling Watts, Peak (RMS)	800 (400)	800 (400)
Enclosure Top Surface Depth, in (cm)	3 9/16 (9.0)	3 9/16 (9.0)
Enclosure Bottom Surface Depth, in (cm)	6 5/16 (16.0)	6 3/4 (17.1)
Enclosure Height, in (cm)	11 7/16 (29.1)	13 1/4 (33.7)
Enclosure Width, in (cm)	19 5/16 (49.0)	21 1/2 (54.6)

Note: The use of a subsonic filter will significantly increase the power handling.
The power handling specifications in these charts are calculated using a 25Hz, 24dB per octave subsonic filter.

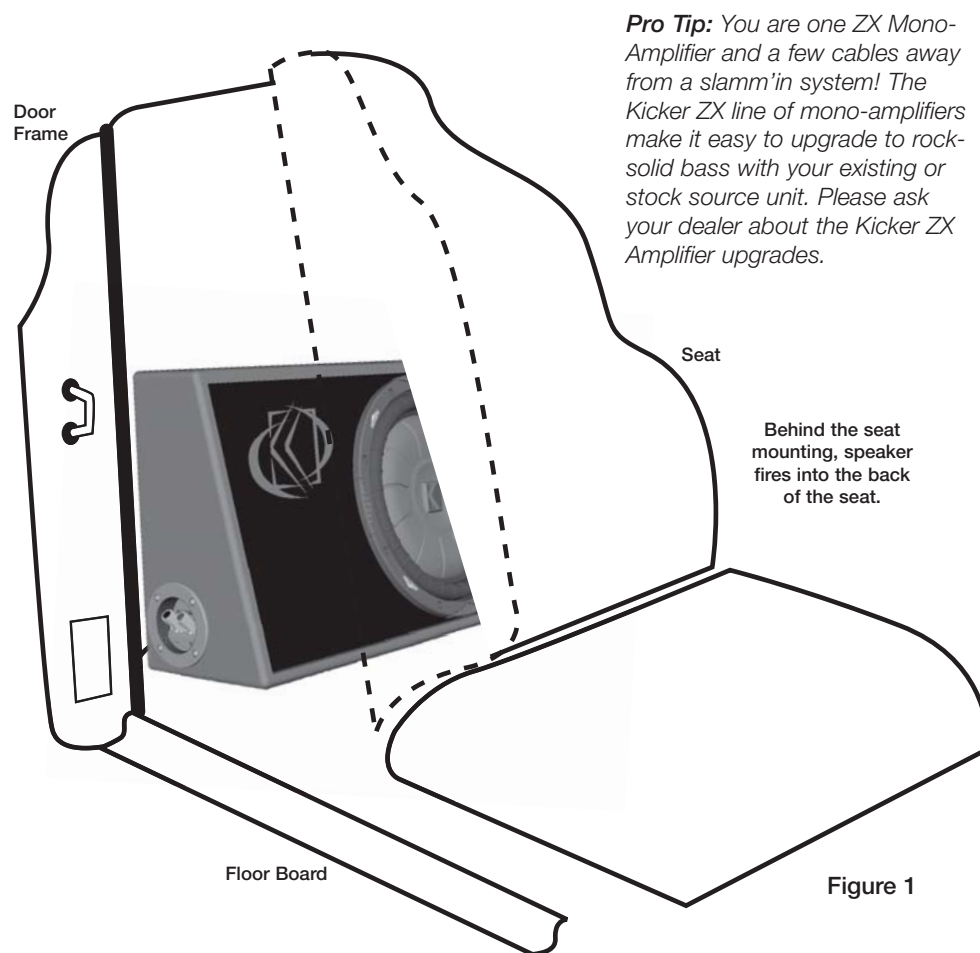


Figure 1

Pro Tip: You are one ZX Mono-Amplifier and a few cables away from a slamm'in system! The Kicker ZX line of mono-amplifiers make it easy to upgrade to rock-solid bass with your existing or stock source unit. Please ask your dealer about the Kicker ZX Amplifier upgrades.

INSTALLATION

Sound Check: Poor bass response? Check the system phasing by reversing a speaker connection from positive to negative on the subwoofer channel; if the bass improves, then the subwoofer was out of phase in reference to the rest of the system.

Important Safety Warning

To avoid potential injury, or possible death, from forward movement of the enclosure during abrupt stops or accidents, the enclosure must be properly installed and securely fastened to your vehicle. You are solely responsible for securely fastening the enclosure in your vehicle.



P.O. Box 459 • Stillwater, Oklahoma 74076 • U.S.A. • (405) 624-8510

Note: All specifications and performance figures are subject to change. Please visit the www.kicker.com for the most current information. To get the best performance from your new Kicker Subwoofer, we recommend using genuine Kicker Accessories and Wiring. Please allow two weeks of break-in time for the subwoofer to reach optimum performance. To get the best performance from your new Kicker subwoofers, we recommend using genuine Kicker Accessories and Wiring.

CONFIGURATION

Free Manuals Download Website

<http://myh66.com>

<http://usermanuals.us>

<http://www.somanuals.com>

<http://www.4manuals.cc>

<http://www.manual-lib.com>

<http://www.404manual.com>

<http://www.luxmanual.com>

<http://aubethermostatmanual.com>

Golf course search by state

<http://golfingnear.com>

Email search by domain

<http://emailbydomain.com>

Auto manuals search

<http://auto.somanuals.com>

TV manuals search

<http://tv.somanuals.com>