

W8LCDI

Compact, Vertically Arrayable Three-Way Enclosure

architectural

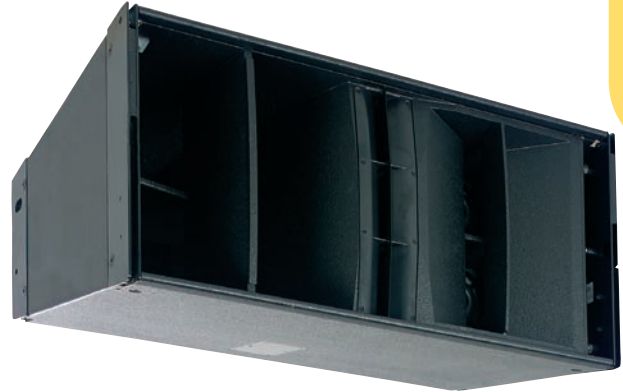
features

- ▶ Stand-alone vertically arrayable enclosure
- ▶ Line array downfill element
- ▶ Consistent 120° (-6dB) horizontal mid and HF pattern control
- ▶ 20° (-6dB) vertical dispersion
- ▶ Amplitude shading switch
- ▶ 7:1 safety factor with arrays of up to 6 cabinets
- ▶ ViewPoint™ array optimisation software
- ▶ Loudspeaker management preset files for a wide variety of configurations
- ▶ Compatible with WLX, WSX and WS218X

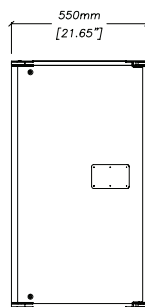
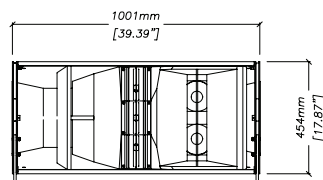
applications

- ▶ Short to medium throw (<40m) arrays of 1 to 4 cabinets
- ▶ Vertically arrayed downfill for W8LCI systems
- ▶ Theatre Sound Reinforcement
- ▶ Fixed Installations

The Martin Audio W8LCDI is a compact, wide dispersion, vertically arrayable enclosure designed for the fixed installation market. It can be used individually and in small quantities for short to medium throw (up to 40 metres) applications as well as a downfill element for the W8LCI. Its 20° vertical dispersion requires fewer cabinets to cover the same area as a conventional line array element, yet it still benefits from the smooth, predictable coverage of a vertically coupled system.



overall dimensions



W8LCDI

technical specifications

TYPE	Three-way line array element
FREQUENCYRESPONSE (5)	60Hz-18kHz ± 3dB -10dB @ 45Hz
DRIVERS	12" (300mm)/4" (100mm) voice coil, Hybrid™ bass horn loaded 2 x 6.5" (165mm)/1.5" (37.5mm) coil drivers, horn loaded 3 x 1" (25mm) exit HF compression drivers, horn loaded
RATED POWER (2)	LF: 1000W AES, 4000W peak MF: 200W AES, 800W peak HF: 100W AES, 400W peak
SENSITIVITY (6)	LF: 103dB MF: 106dB HF: 109dB
MAXIMUM SPL (7)	LF: 133dB continuous, 139dB peak MF: 129dB continuous, 135dB peak HF: 129dB continuous, 135dB peak
NOMINAL IMPEDANCE	LF: 8 ohms MF: 8 ohms HF: 8 ohms
DISPERSION (-6dB)	120° horizontal, 20° vertical 140° horizontal @ -10dB
CROSSOVER	300Hz, 3kHz active
ENCLOSURE	Vertical trapezoid with 3.75° wall angle, multi-laminate birch ply construction
FINISH	Textured black paint
PROTECTIVE GRILLE	Black perforated steel
CONNECTORS	2 x Neutrik NL8
FITTINGS	Proprietary rigging system
DIMENSIONS	(W) 1000mm x (H) 454mm x (D) 550mm (W) 39.4ins x (H) 17.9ins x (D) 21.7ins
WEIGHT	67kg (148lbs)

Century Point, Halifax Road, Cressex Business Park,
High Wycombe, Buckinghamshire HP12 3SL, England.
Telephone: +44 (0)1494 535312 Facsimile: +44 (0)1494 438669
E-mail: info@martin-audio.com

All information is Copyright © 2008 Martin Audio Ltd.
Due to Martin Audio's policy of continuing improvement, we reserve the right to alter these specifications without prior notice.



www.martin-audio.com

Free Manuals Download Website

<http://myh66.com>

<http://usermanuals.us>

<http://www.somanuals.com>

<http://www.4manuals.cc>

<http://www.manual-lib.com>

<http://www.404manual.com>

<http://www.luxmanual.com>

<http://aubethermostatmanual.com>

Golf course search by state

<http://golfingnear.com>

Email search by domain

<http://emailbydomain.com>

Auto manuals search

<http://auto.somanuals.com>

TV manuals search

<http://tv.somanuals.com>