

**OLYMPUS**<sup>®</sup>

**E-620**



**The eye of a photographer. The vision of an artist.**

Download from [Www.Somanuals.com](http://www.Somanuals.com). All Manuals Search And Download.



# Shoot outside the frame.

DSLR users, passionate photographers and anyone looking to express creativity through photography, meet the E-620. The world's smallest and lightest image-stabilized\* DSLR puts creativity in the palm of your hands.

Six creative in-camera Art Filters, Multiple Exposure shooting and a swivel Live View 2.7" HyperCrystal™ III LCD offer artistic freedom and endless creative possibilities. Six Art Filters enable you to manipulate a photo right in the camera—giving you the ability to be as creative as you want, whenever you want. The 12.3-megapixel Live MOS sensor™ and TruePic™ III+ processor provide exceptional picture quality. And with its other unique features, including three modes of In-body Image Stabilization and small 18.9-oz. body, the E-620 is a camera that truly lets you shoot outside the frame.



POP ART



© 2009 Asitton Popiel

SOFT FOCUS



© 2009 Anne Day

PALE & LIGHT



© 2009 Judy Hermann & Mike Starke

LIGHT TONE



© 2009 Victor Rodriguez

GRAINY FILM



© 2009 Becky Clough

PIN HOLE



© 2009 Anne Day

# Every photographer has a vision. The E-620 has six.

With six in-camera Art Filters, the E-620 transforms your photography into works of art. Each filter brings a unique look and feel to every photograph.

**Pop Art** super-saturates colors and creates brighter, more vivid photographs.

**Pale & Light Color** brings soft, flat light and pastel coloring to create a feeling of romance.

**Soft Focus** creates a dreamlike quality, giving photographs a fantasy feel.

**Light Tone** brightens your entire image, including its darker areas, providing more detail and light.

**Grainy Film** creates more dramatic shots. It produces a gritty black-

and-white film quality, giving your photographs an edgier look.

**Pin Hole** darkens the outer edges of your photograph, enhancing the subject in the center. This creates the feeling of a new atmosphere and brings the photograph to life.

When shooting with an Art Filter, you can set the E-620 to capture your images in both RAW and JPEG format. The original image is saved as a RAW file and the Art Filter image is saved as a JPEG. This way, you always have both the Art Filter and the original shot.

With the E-620's six Art Filters, you can take your photography one huge step farther. Get the look and feel you want, and make every photograph unique. Be a photographer. Be an artist. And **free your creativity.**



“The E-620 helped me capture the look I wanted.”

*To truly illustrate the power and artistic capabilities of the E-620, we gave it to some of the most creative people we know—photography students at the University of the Arts in Philadelphia. On the following pages, you’ll see some of the amazing photos they took and find out how the E-620 can bring creativity to your photography.*

I was drawn to the amazing architecture of the Philadelphia Art Museum. At dawn, the museum had an orange glow to it, and I knew the Pop Art Filter would be perfect. It really intensified and pulled out all the colors. I also used a zoom lens and got really close up to capture every detail of the building. The E-620 helped me capture the look I wanted.

—Joshua Trusty

*Shot by Joshua Trusty with the Pop Art Filter.*





LCD image: © 2009 Lou Manna



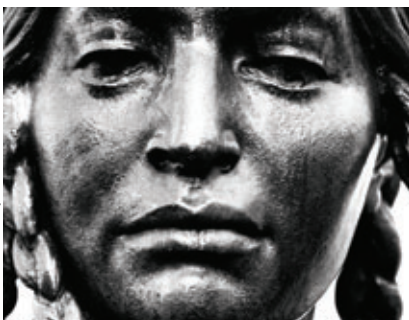
# Expose your creativity.

Create an original with the E-620's **Live View Multiple Exposure** feature. It takes photographic creativity even farther. Sure, you've taken a photograph before. But now, you can create one. Capture your best shots and overlay them to create a multiple exposure. Shoot and compose in Live View or during playback mode and superimpose your favorite images to create unique photographs that tell a story.

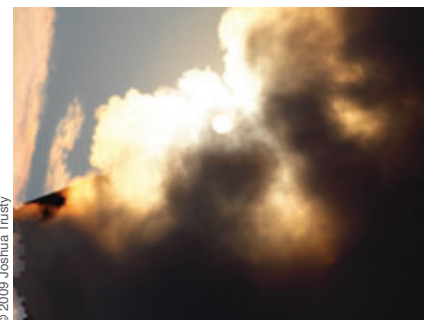


© 2009 Joshua Trusty

**Multiple exposure. Multiple options.** The image capture options allow you to create your multiple exposure exactly the way you want it. In the capture mode, shoot and overlay up to two images (JPEG or RAW). Shoot two shots on the same frame, or use a saved shot and then shoot another. Or in overlay edit mode, capture up to 3 shots separately and combine them in the camera later.



© 2009 Joshua Trusty



© 2009 Joshua Trusty

*Overlay two base images to create a composite.*

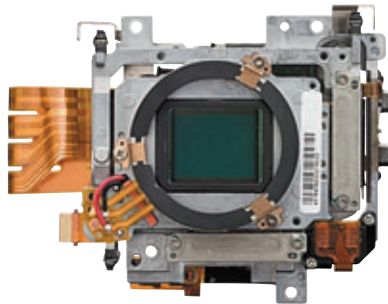
# Improve your image.



**Superior color. Superior performance.** The E-620's high-performance 12.3-megapixel Live MOS sensor™ provides accurate color, sharp detail and is complemented by Olympus' high-speed TruePic III+ image processing engine for even more accurate natural color, superior detail, low noise and faster startup time.

**Shoot with a steady hand and free your photography from blurry images with in-body Image Stabilization.** With three IS modes, the E-620 compensates for camera-shake in any direction. In-body Image Stabilization gives you the ability to take bright, sharp photos in any situation—with any Four Thirds lens, in low light or at slow shutter speeds. You can even input the focal length for a lens the camera can't identify.

**Let's face it. Dust can get in a camera and ruin an image.** But Olympus' proven Dust Reduction System ensures crystal-clear, spot-free photos. When others spend hours retouching photos, you can just turn on the E-620. Every time you do, the exclusive Supersonic Wave Filter™ vibrates and removes any dust or foreign particles from in front of the image sensor—ensuring spot-free photos.



IS and SSWF Unit



Without Image Stabilization



With Image Stabilization

**With the E-620, you're in control.**

**13 Scene-Select Modes:** Including portrait, fireworks, sports—even 2 new underwater modes.

**49-Zone AE Sensor:** Unique Digital ESP metering divides the image frame area into 49 zones and computes the optimum exposure value.

**5 Metering Modes:** Digital ESP Exposure metering, center weighted average metering, and three types of spot metering—including shadow and highlight spot metering.

**Face Detection Technology:**

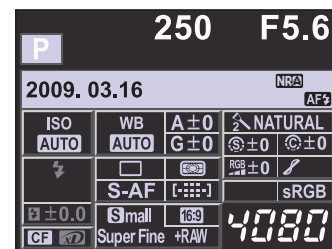
Find, focus on and capture up to eight faces in the Live View AF mode.

**Shadow Adjustment Technology:**

Compensate for extreme contrast when shadowed areas lack visible detail.

**Supercontrol Panel:**

Easy user interface lets you select and set functions directly on the LCD without entering into menus.



Supercontrol Panel

**Illuminated Buttons:** Viewing and changing settings are easy at night or in low-light conditions.

**Perfect Shot Preview:** See the effects of four different exposures or white balance settings on the LCD before you take the shot.





“The picture  
was sharp,  
and the color  
was great.”

I was experimenting with different ways to highlight the Pin Hole Art Filter. We had a few lenses and the distortion the pieces of glass created, along with the round features of his face, looked really amazing—and complemented the filter even more. The picture was sharp and the color was great, which makes the E-620 instantly gratifying.

—Julia Mead

*Shot by Julia Mead with the Pin Hole Art Filter.*





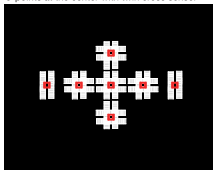
# Speed. Ingenuity. Proficiency.

## The E-620 captures it all.

**The speed.** With a camera that has so many creative capabilities, you don't want to miss a shot.

The E-620's Phase Detection 7-point Twin AF system provides fast and accurate focusing so you can capture every important moment. Five super-sensitive Twin Cross and two Twin AF target points make focusing, composing and capturing a photo fast and simple. And shooting movement, action or in low-light situations is just as easy. When shooting in the Live View AF mode, the E-620 utilizes an 11-point Contrast AF (Imager AF) system for fast and accurate focusing right on the LCD—with virtually no delay. Just press the shutter halfway.

E-620: 7-point full twin sensor  
5-points at the center with twin cross sensor



AF sensor layout

The E-620 also gives you the ability to shoot at up to 4 frames per second. Capture nature photography, sports or continuous action sequences.

**The ingenuity.** If you're looking for creative capabilities—the E-620 has them. If you want exclusive features, the E-620 has those, too.

Capture pictures with the first-ever, swivel Live View 2.7" HyperCrystal III LCD. With viewing angles up to 176°, the E-620 takes your photography to new places. Settings like white balance and exposure can also be adjusted and seen instantly while viewing the LCD in Live View. Icons and text are also easy to see.

During Live View shooting, the LCD can display framing-assist patterns and histogram. This makes it easy to compose, adjust and check exposure of your image before you even take the shot.



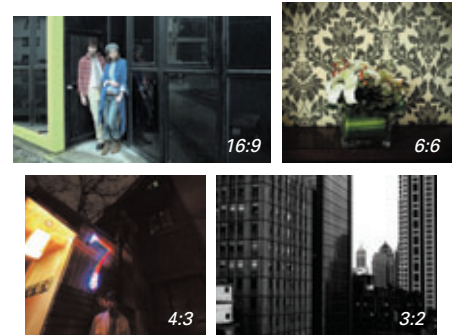
Grid Line

Golden Section

Histogram

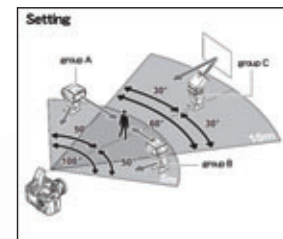
The E-620 gives you even more ways to shoot outside the frame. Not every photograph is meant to be a 4x6. And with the E-620, you have four aspect ratios to frame your shot exactly how you want it. Shoot in 4:3, suited for an 8x10 photograph, or 16:9, perfect

for viewing on your widescreen television. The E-620 can also shoot in 3:2 and 6:6.



**The proficiency.** The E-620 shines a new—and wireless—light on your photography.

The E-620 is compatible with Olympus FL-36R and FL-50R wireless electronic flashes and can control up to three wireless flash groups, in up to four channels, for professional lighting results.





# Enhance your vision even more.

The E-620 is available body only; with an ED 14-42mm lens (equivalent to 24-84mm focal length); or as a two-lens outfit with both the ED 14-42mm lens and ED 40-150mm lens (equivalent to 28-300mm focal length). The E-620 is also compatible with all Olympus ZUIKO Digital™ lenses.

## ZUIKO Digital™

Olympus offers 20 digital-specific lenses—meticulously crafted from pristine glass and designed to work seamlessly with all our SLRs. Every one of our lenses delivers exquisite picture quality and amazing sharpness.



© 2009 Julia Mead

## Additional accessories:

**The HLD-5 Power Battery Holder** holds up to two Lithium Ion BLS-1 batteries.

**The optional PT-E06 Underwater Housing** enables you and your E-620 to safely reach depths of 130 feet underwater.



© 2009 Victor Rodriguez



© 2009 Richard S. Pelkowski



“The grainy texture  
really made  
the photograph  
come to life.”

Her hair and wardrobe gave her such a vintage look. I instantly thought the Grainy Film Art Filter would really complement her style. And it did. The high-contrast black-and-white-film look and the grainy texture really made the photograph come to life. The filters make each photograph unique—and with no retouching required.

—Victor Rodriguez

*Shot by Victor Rodriguez with the Grainy Film Art Filter.*





© 2009 Harris Fogel

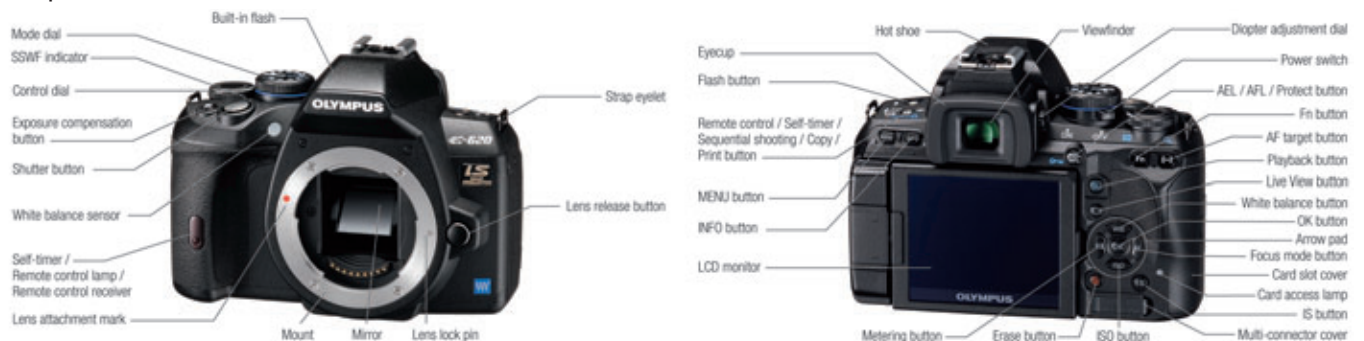


## THE UNIVERSITY OF THE ARTS

Olympus wishes to thank the students and faculty at the University of the Arts in Philadelphia for making Photo University possible.

To see more student work and to learn more about Photo University, visit  
[www.youtube.com/watch?v=y5aL6-k9NnA](http://www.youtube.com/watch?v=y5aL6-k9NnA)  
[www.facebook.com/pages/Get-Olympus/63355899492](http://www.facebook.com/pages/Get-Olympus/63355899492)

### E-620 part names



# Olympus E-620 Digital SLR

Stock numbers: E-620 Body: 262160  
 E-620 Body with 14-42mm Lens: 262161  
 E-620 Body with 14-42mm & 40-150mm Lenses: 262162



<b>Product type</b>	Product type	Single-lens reflex	View digital camera with interchangeable lens system
<b>Memory</b>	Memory	CompactFlash Type III (UDMA), Microdrive, xD-Picture Card (Dual Slot)	
<b>Screen size</b>	Screen size	17.3 mm (H) x 13.0 mm (V)	
<b>Lens mount</b>	Lens mount	Four Thirds Mount	
<b>Effective Pixels number</b>	Effective Pixels number	12.3 million pixels	
<b>Image Pickup Unit</b>	Product type	High speed Live MOS Sensor	
	Total no. of pixels	Approx. 13.1 million pixels	
	Aspect ratio	1.33 (4:3)	
	Filter array	Primary color filter (RGB)	
	LPF	Fixed type	
	IR cut filter	Hybrid type	
	Dust reduction	Supersonic Wave Filter (dust reduction system for image sensor)	
<b>Recording</b>	Recording format	DCF, DPOF compatible/Exif, PRINT Image Matching III	
	File format	RAW (12-bit lossless compression), JPEG, RAW+JPEG	
	Recording image size	(RAW) 4032 x 3024 pixels (JPEG) 4032 x 3024 pixels - 640 x 480 pixels	
<b>Viewfinder</b>	Product type	Eye-level single-lens reflex viewfinder	
	Field of view	Approx. 95%	
	Viewfinder magnification	Approx. 0.96x (1-m - 1.50mm lens, infinity)	
	Eye point	Approx. 18 mm (1-m - 1") * from eyepiece lens	
	Dioptric adjustment range	-3.0 - +1-m	
	Focusing screen	Fixed (Neo Lumi-Micro Mat screen)	
	Eye-piece shutter	Eye piece cover EP-C-1 supplied	
	Eye cup	Interchangeable type EP-5/6/7/8, EP-8 is supplied (Magnifier Eyecup ME-1 is available)	
	Optical preview (view finder)	Available to set to Fn button	
	Live preview	Available to set to Fn button	
	View finder information	Aperture value, Shutter speed, Record mode, AF confirmation mark, Flash, WB, AE lock, Number of storable still images, Exposure compensation value, Metering mode, Battery warning, Exposure mode, AF frame (super impose), IS, Bracket, ISO value	
<b>Live View</b>	Live View	High speed Live MOS Sensor* for still picture shooting is used, 100% field of view Exposure adjustment pre-view, White balance adjustment pre-view, Gradation auto pre-view Face detection pre-view, Perfect shot pre-view	
	AF	High speed imager AF, Phase-difference detection AF	
<b>Image stabilizer</b>	System	Built-in (Imager shift image stabilizer)	
	Mode	3 modes (2 dimensional activation, 1 dimensional activation in landscape frame to vertical direction moving, 1 dimensional activation in portrait frame to horizontal direction moving)	
	Manual Function	input focal length 8, 10, 12, 16, 18, 24, 28, 30, 35, 40, 48, 50, 55, 65, 70, 75, 80, 85, 90, 100, 105, 120, 135, 150, 200, 210, 250, 300, 350, 400, 500, 600, 800, 1000	
	Effective compensation range	Approx. 4EV steps (in maximum effect)	
	Shutter speed range	2 - 1/4000 sec.	
<b>Monitor</b>	Product type	HyperCrystal III LCD (transmissive TFT color LCD)	
	Size	2.7 inches	
	Total no. of pixels	Approx. 230,000 dots	
	Playback field of view	100%	
	Brightness control	15 levels*	
	Color balance	15 levels	
<b>Focusing</b>	AF system	TTL phase-difference detection system Contrast detection system (with 25mm f2.8, 14-42mm f3.5-6.5, 40-150mm f4.0-5.6, 9-18mm f4.0-5.6, 14-54mm f2.8-3.5f)	
	Focus mode	Single AF (S-AF) / Continuous AF (C-AF) / Manual Focus (MF) / S-AF + MF / C-AF + MF * C-AF mode is not available with the contrast detection system	
	Focusing point	7 points AF sensor with the phase-difference detection system (5 points twin cross AF sensor / 2 points twin AF sensor; combine for 7 AF points) 7-area multiple AF with the contrast detection system (Auto, selectable in option)	
	Focusing point selection	Single target, All targets with the phase-difference detection system Single, all 7 area, or Face detection with the contrast detection system	
	AF luminance range (phase-difference detection system)	EV -1 to 19 (at 20°, ISO 100)	
	AF illuminator (phase-difference detection system)	Built-in flash (external flash available)	
	AF lock	Locked at first position of Shutter button in Single AF mode / AEL button (customizable)	
	Focus tracking (phase-difference detection system)	Interlocked with Continuous AF mode	
	Focus aid	Available	
	Fine Adjustment	+/- 20 steps, 20 separate lenses data can be registered	
<b>Exposure Control</b>	Metering system	TTL open-aperture metering system (1) Digital ESP metering (15 points multi pattern metering) (2) Center weighted average metering (3) Spot metering (approx. 2% for the viewfinder screen, Highlight / shadow bases are available)	
	Metering range	EV -1 - 20 (Digital ESP metering, Centre weighted average metering, Spot metering) (At normal temperature, 50mm f2, ISO 100)	
	Exposure mode	(1) Auto (2) P. Program AE (Program shift can be performed) (3) A: Aperture priority AE (4) S: Shutter priority AE (5) M: Manual (6) Scene program AE (7) Scene select AE	
	Scene program AE	Portrait, Landscape, Macro, Sport, Night + Portrait	
	Scene select AE	Children, High Key, Low Key, DS mode, Nature Macro, Candle, Sunset, Fireworks, Documents, Panorama* (* Available with the Olympus xD-Picture Card), Beach & Snow, Underwater Wide, Underwater Macro	
	ISO sensitivity	AUTO, ISO 200 - 3200 (customizable, Default 200-800) / Manual ISO 100 - 3200, 1/3 or 1 EV steps	
	Exposure compensation	+5 EV in 1/3, 1/2, 1 EV steps selectable	
	AE lock	AEL button (customizable)	
	Exposure bracketing	3 frames in 0.3, 0.5, 0.7, 1EV steps selectable	
	ISO bracketing	3 frames in 0.3, 0.7, 1EV steps selectable	
	Metering standard value adjustment	1/6 EV step, +/- 1EV range	
<b>White Balance</b>	Auto WB system	Hybrid detection system with High speed Live MOS sensor and dedicated external sensor	
	Preset white balance	8 settings (3000K - 7500K) Lamp (3000K), Fluorescent 1 (4000K), Fluorescent 2 (4500K), Fluorescent 3 (6000K), Daylight (5300K), Flash (5500K), Cloudy (6000K), Shade (7500K)	
	White balance compensation	+7 steps in each A-B/G-M axis (in Auto WB / Preset WB mode / One touch WB)	
	CWB (Kelvin setting)	1 setting can be registered at Kelvin temperature (2000K - 14000K)	
	One-touch white balance	1 custom setting can be registered	
	White balance bracketing	3 frames in 2, 4, 8 steps selectable in each A-B/G-M axis	
<b>Color Mode</b>	Color space	sRGB, Adobe RGB	
<b>Picture Mode</b>	Mode	Vivid, Natural, Portrait, Muted, Monotone, Custom (default setting: Natural) In custom mode, basic 5 modes and adjustment is available	
	Adjustment parameter	Contrast, Sharpness and Saturation level available in 5 steps for Vivid, Natural, Portrait and Muted Contrast and Sharpness level available in 5 steps for Monotone In custom mode, gradation level available in 4 steps	
	Filter effect	Yellow, Orange, Red or Green filter available for Monotone	
	Picture tone	Sepia, Blue, Purple or Green tone available for Monotone	
	Gradation	4 levels (Auto, High key, Normal, Low key)	

<b>Shutter</b>	Product type	Computerized focal-plane shutter
	Shutter speed	PPS) S, A, M mode: 60 - 1/4000 sec. 1/3, 1/2, or 1EV steps selectable Operation time: 12 sec., 2 sec. (cancel available) Roll-up to 30 min. (selectable longest time in the menu: Default: 8 min.)
	Self-timer	Available (with optional RM-UCL1 Remote cable)
	Remote cable release	Available (with optional RM-UCL1 Remote cable)
	Optical remote control	Available (with optional RM-1 remote control)
	Anti shock mode	Available (1 to 30 sec selectable)
<b>Drive</b>	Drive mode	Single-frame shooting, Sequential shooting H, Sequential shooting L, Self-timer, Remote control
<b>Sequential shooting speed</b>		Approx. 4 frames/sec. in sequential shooting H, 1 to 3 fps selectable in sequential shooting L
	Max. recordable pictures on sequential shooting	RAW mode: Max. 5 frames JPEG mode: Depends on compression ratio and no. of pixels (Large normal mode: approx. up to card capacity with SanDisk Extreme IV G48)
<b>Integrated Flash</b>	Built-in flash	Retractable flash, GN-17 at ISO200, (GN-12 at ISO 100 m)
	Compatible external flash	FL-50R, FL-36R, FL-36, FL-20, STF-22 Twin Macro Flash, SRP-11 Macro Ring Flash
	Flash control mode	TTL Auto (TTL pre-flash mode), Auto, Manual
	Flash mode	Auto, Red-eye reduction, Red-eye reduction slow sync., Slow sync at 1st curtain, Slow sync at 2nd curtain, Fill-in, Manual (1/4, 1/16, 1/64), Off
	Synchronization speed	1/180 sec. or less
	Flash intensity control	Up to +3 EV in 0.3, 0.5, 1 EV steps
	Flash bracketing	3 frames in 0.3, 0.5, 0.7, 1 EV steps selectable
<b>Wireless flash control</b>	Compatible external flash	FL-50R, FL-36R
	Control method	Triggered and controlled by built-in flash light
	Flash control mode	TTL Auto (TTL pre-flash mode), Auto, Manual, FP TTL Auto, FP Manual
	Number of channel	4 channels
	Group setting	3 groups
<b>Art Filter</b>	Mode	Pop Art, Soft Focus, Pale & Light Color, Light Tone, Grainy Film, Pin Hole
<b>Multi Exposure</b>	Number of picture	2 pictures
	Functions	Auto gain, Live View, Exposing on Recorded picture
<b>Multi Aspect</b>	Aspect Ratio	4:3(Default) / 3:2 / 16:9 / 6:6
<b>Illuminated button icons</b>		MENU, INFO, Playback, Live View, Arrow pad WB, AF Metering, ISO, OK, Erase, Image Stabilization (IS)
<b>Universal design</b>		Color Universal Design Information has certified (E-620, BLS-1 Li-ion battery, BCS-1 Li-ion battery charger)
<b>Super control panel</b>	Information (shooting)	Battery information, Exposure mode, Shutter speed, Aperture value, Exposure compensation value, ISO sensitivity, NR setting, WB, WB compensation value, Picture mode, Flash mode, Record mode, Image size, Card information, Drive mode, Flash intensity compensation value, Metering mode, Recordable still image number, Focusing mode, FP warning, AF frame, AF illuminator deactivated notification, Color space, Sharpness, Contrast, Saturation, Gradation, IS activating mode, Face detection, RC mode setting, My Mode, Flash Charge, Multi Exposure, Aspect Ratio
	Information (wireless flash commander)	Exposure mode, Shutter speed, Aperture value, Exposure compensation value, Exposure compensation value bar, Flash compensation value bar, Flash compensation value, ALE notification, Flash compensation notification NR notification, BUT notification, AF illuminator deactivated notification, Color space Wireless channel setting, Built-in flash intensity, Group setting Back light lighting time is selectable. (Keep, 8, 30sec, 1min)
<b>Playback</b>	Playback mode	Single-frame, Index (4/8/16/25/49/100 frames), Calendar, Close-up (2 - 14X)
	Information display	Slideshow, Picture rotation (auto mode available), Light box Histogram (independent luminance / RGB available), Highlight / Shadow point warning, AF frame, Shooting information
<b>Menu</b>	Languages	Japan: Japanese, English (Additional one language is possible to download) Others: English, French, German, Spanish, Italian, Japanese, Korean, Traditional Chinese, Simplified Chinese, Russian, Czech, Dutch, Danish, Polish, Portuguese, Swedish, Norwegian, Finnish, Croat, Slovenian, Hungarian, Greek, Slovakian, Turkish, Latvian, Estonian, Lithuanian, Ukrainian, Serbian, Bulgarian, Rumanian, Indonesian, Malay, Thai
<b>Reset &amp; custom setting</b>	Custom reset	2 setting recordable
	My mode	2 setting recordable
<b>Image Editing</b>	Erasing function	Single frame, All frames, Selected frames
	Protect function	Single frame, Selected frames, Release protect (Single/All selected)
	Copy between media	Single frame, All frames, Selected frames
	RAW picture editing	RAW development
	JPEG editing	Shadow adjustment, Red-eye fix, Trimming, Monotone, Sepia, Saturation (color depth), Resize (producing another file), Aspect Change
	Merge function	2-3 pictures, merge gain step 0.1-2.0/0.1 step
<b>Print</b>	Print function	Print reservation (DPOF), Direct print (PicBridge compatible)
<b>Input/Output</b>	PC interface	USB 2.0 High Speed for storage and camera control (MTP mode is available)
	USB/Video connector	Dedicated multi-connector (Video: NTSC/PAL selectable, Optional Remote cable RM-UCL1 is available)
	Flash attachment	Hot shoe
	DC-in	No
<b>Power Requirements</b>	Battery	BLS-1 Li-ion battery (included)
	Sleep mode	Available (1, 3, 5, 10 min., off selectable)
	No. of recordable pictures (with 50% flash light)	Approx. 500 shots (optical viewfinder) (with BLS-1 under CIPA testing standard)
	Power battery holder	HLD-5 compatible
<b>Dimensions/Weight</b>	Dimensions	5.11" w x 3.7" h x 2.36" d
	Weight	16.79 oz. (body only)
<b>Operating Environment</b>	Temperature	0 - 40° (operation) / -20 - 80° (storage)
	Humidity	30 - 90% (operation) / 10 - 90% (storage)
<b>Splash proof</b>		No
<b>Box contents</b>		Body, Li-ion battery BLS-1, Li-ion battery charger BCS-1, USB/Video Multi cable, Eye piece cover EP-C-1, Shoulder strap, OLYMPUS Master CD-ROM, Instruction manual, Warranty card
<b>Accessories</b>		



HLD 5 Power Battery Holder: 260274



FL 36R Flash: 260115



P-TEO 6 Underwater Housing: 260540



FL 50R Flash: 260116



**Capture It All.®**

[www.getolympus.com/dsir](http://www.getolympus.com/dsir)

© 2009 Olympus Imaging America Inc. All rights reserved. Printed in the United States of America.

Olympus is a registered trademark of Olympus Corporation. Download from [www.Sematerials.com](http://www.Sematerials.com) All Manuals Search And Download.

900522



## Free Manuals Download Website

<http://myh66.com>

<http://usermanuals.us>

<http://www.somanuals.com>

<http://www.4manuals.cc>

<http://www.manual-lib.com>

<http://www.404manual.com>

<http://www.luxmanual.com>

<http://aubethermostatmanual.com>

Golf course search by state

<http://golfingnear.com>

Email search by domain

<http://emailbydomain.com>

Auto manuals search

<http://auto.somanuals.com>

TV manuals search

<http://tv.somanuals.com>