



**Stowaway[®] Sierra Keyboard
Owner's Manual**
for
Pocket PC 2003 and Windows Mobile[™] 5.0

Keyboard Driver:

Stowaway 4.5

Table of Contents

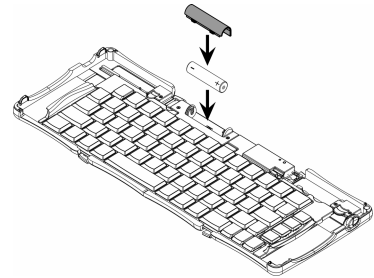
Setting up the Keyboard	3
Before You Begin	3
Installing the Software	3
Keyboard Description	4
Configuring the Keyboard to Your Device	5
Enabling the Keyboard Driver	5
Secured Connections	6
Unsecured Connections	8
Other Features	10
Power Efficient Modes	12
Firmware Upgrade	13
Reconnecting the Stowaway Sierra keyboard	14
Unsecured Mode Settings	15
Customizing Your Keyboard	16
Input Method Toolbar	16
Keyboard Control Panel	17
Disabling the Stowaway Sierra Keyboard	18
Secure Connection Overview	18
Keyboard Status Light	19
Using the Stowaway Sierra keyboard	20
Moving the Cursor/Highlighting Text	20
On-Screen Button and Editing Shortcuts	21
Launching and Navigating Applications	21
Windows Mobile 2003 Menu Navigation	22
Windows Mobile 5.0 Menu Navigation	22
Toolbar Navigation	23
Other Shortcuts	23
International and Extended Character Set	24
Frequently Asked Questions	25
Legal Notices	27
Trademarks	27
Obtaining Warranty Service	28
Important Battery Information	29
Important Notes about Bluetooth Devices	29
Regulatory Notices	30
Features and Specifications Summary	37

Setting up the Keyboard

Before You Begin

Before you install the Stowaway Sierra keyboard and mouse software for Windows Mobile™ 2003/Windows Mobile 5.0 PPC edition:

- **ActiveSync 4.0 or greater is required to install the keyboard driver application.**
- **Disable or uninstall any other keyboard or mouse applications that you have previously installed on your mobile device.**
- Ensure there is at least 250 KB of memory on your mobile device. To check the available memory, tap Start→Settings→System→Memory.
- Insert the AAA battery (included) beneath the battery cover of the Stowaway Sierra keyboard.

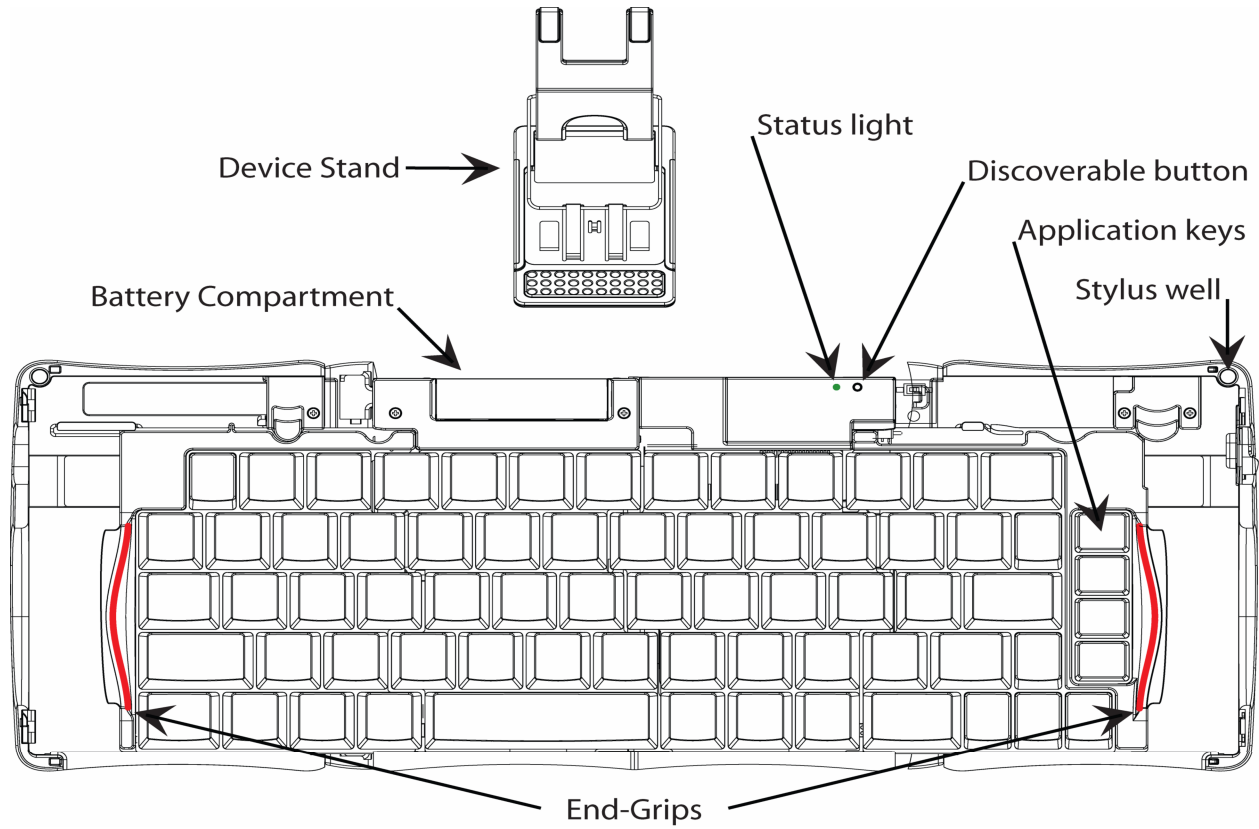


Installing the Software

1. Connect your mobile device to its synchronization cradle/cable and establish a connection between the computer and your mobile device using ActiveSync.
2. Insert the Stowaway CD-ROM into the CD-ROM drive on your PC. Alternately, if your device has internet access you may browse to: www.thinkoutside.com and the website will automatically detect the correct driver for your device and offer it for download.
3. Follow the on-screen instructions to complete the installation.
NOTE: The driver must be installed in **Main Memory** on your device (default location) to function properly.
4. When the installation is complete, you will be prompted to reset your mobile device.
5. After the driver is successfully installed and the mobile device is reset, the keyboard driver and mouse icons will appear in the **Programs** window.



Keyboard Description

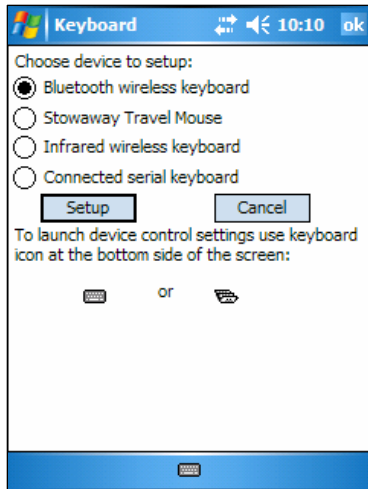
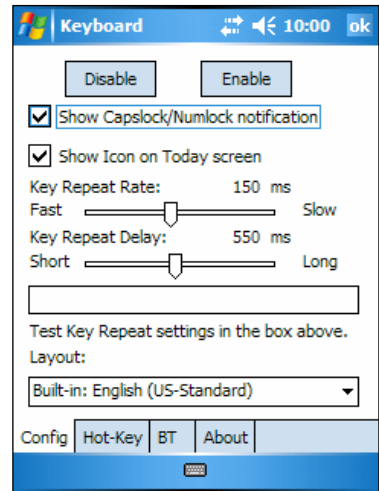


Configuring the Keyboard to Your Device

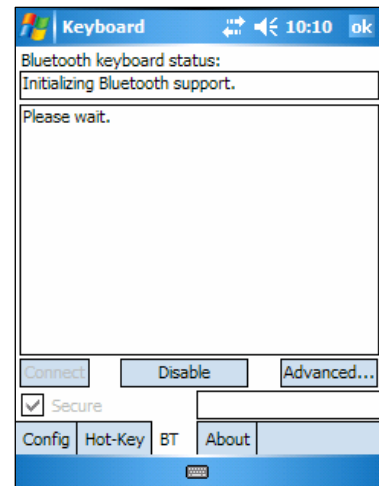
NOTE: The Bluetooth connection between the mobile device and keyboard must be set up through the Stowaway keyboard/mouse driver.

ENABLING THE KEYBOARD DRIVER

1. To enable the Stowaway Sierra keyboard, tap the **Enable** button on the **Config** screen of the keyboard application. This will open the **Keyboard Setup Screen**.



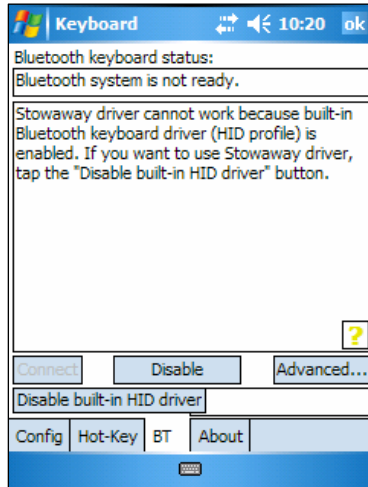
2. When the **Device Setup Screen** is shown, select the **Bluetooth wireless keyboard** option and tap **Setup**. This will show the **Bluetooth Keyboard Status Page** of the Stowaway Sierra keyboard application. You may also open that page by selecting the **BT** tab.



3. When Setup begins, the driver will enable the mobile device's Bluetooth system software; this is also known as the **Bluetooth Stack**.

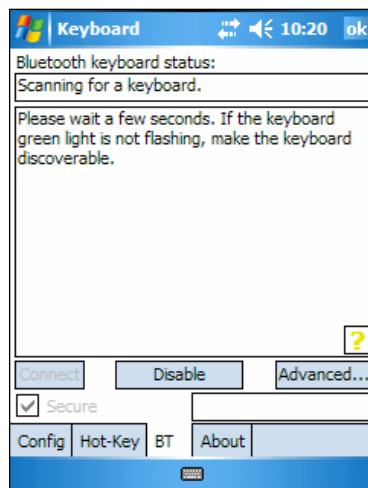
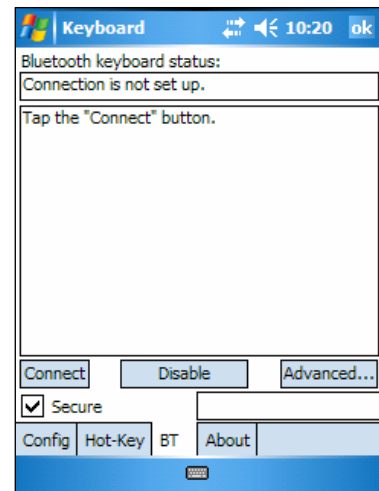
The following section deals strictly with Secure Connections. By default the Secure box is checked in the driver and is the recommended method, as it provides the best security and reconnection.

SECURED CONNECTIONS



1. On mobile devices with Windows Mobile 5.0 you may see a screen warning that the Stowaway Sierra Keyboard driver will not work with the built-in Bluetooth Keyboard driver. You must tap ***Disable built-in HID driver*** in order to get the full functionality of the keyboard.

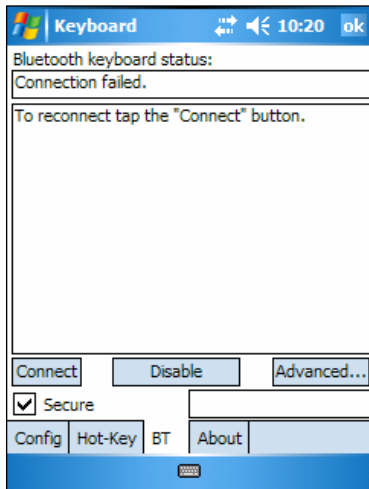
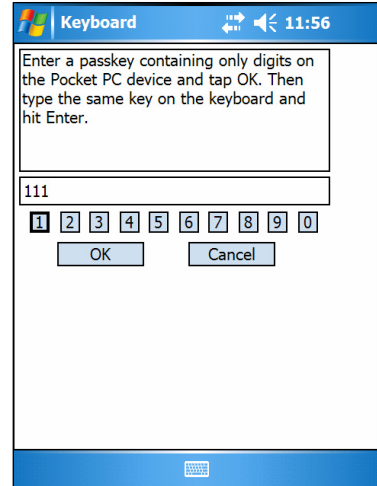
2. A ***Secure connection*** requires authentication by entering the same ***passkey*** on the mobile device and then on the keyboard. A Secure connection allows automatic reconnection. Before starting the connection make sure the keyboard is ***Discoverable*** by the mobile device. To do this, press the Discoverable button on the keyboard until the green LED (above the <0> key) flashes once per second. Then tap the ***Connect*** button on the screen.



3. The mobile device will scan for the Stowaway Sierra Keyboard. Once it is discovered, a prompt will display allowing you to enter the ***passkey***.

4. You will be prompted for a passkey and will see a **Bluetooth Passkey** dialog box. Enter a passkey **of your own choosing** (of 1-9 digits) using the mobile device's on-screen keyboard and tap OK. Then, type the same passkey number on the Stowaway Sierra keyboard. When finished, press the <Enter> key.

NOTE: The passkey must contain only digits, for example **111**.

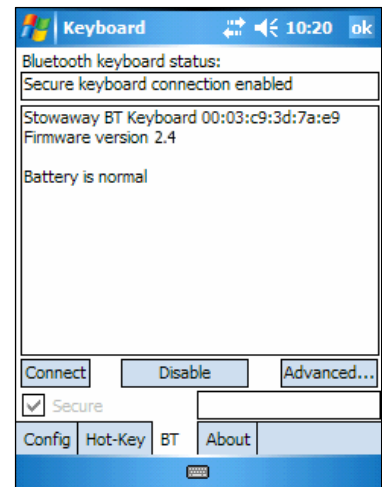


5. If the passkey is not entered correctly, the connection will fail. In this case you will need to repeat steps 1-4 from above.

NOTE: Please, make sure that the passkey is entered on-screen first, tap OK and then follow with the passkey on the keyboard. When finished, press the <Enter> key on the keyboard.

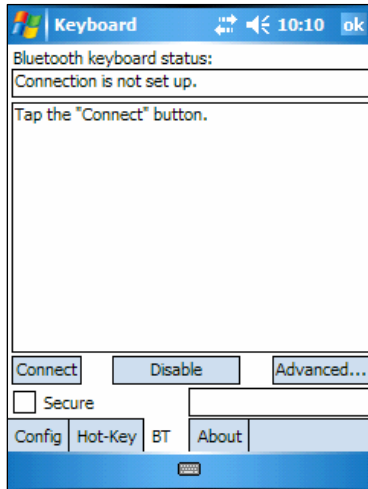
6. The keyboard is now **paired** and available for use. If the keyboard is closed, the mobile device is turned off or either is idle too long the connection will be broken. To reconnect, make sure both devices are powered on and within range, then press a key to reestablish the connection. If reconnection fails tap the **Connect** button on the BT status page.

NOTE: It may take 2-3 seconds for the connection to be reestablished after a key press.



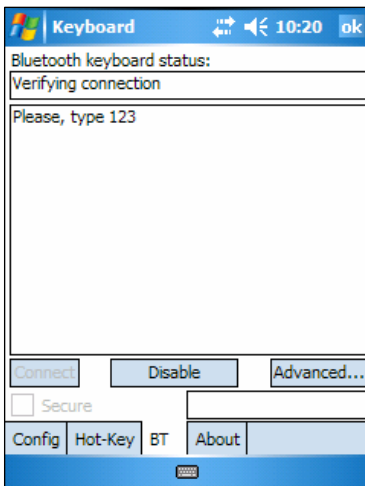
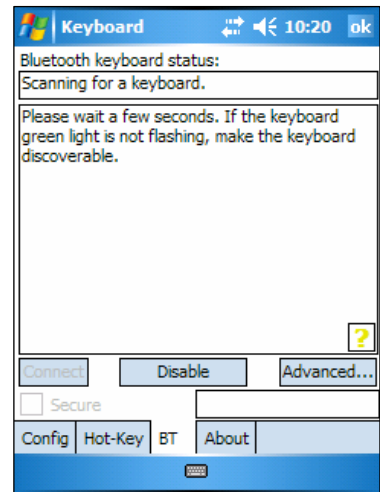
UNSECURED CONNECTIONS

The following sequence may depend on the settings in your Bluetooth Manager and which Bluetooth stack is present on your mobile device. For more information see [Unsecured Mode Settings](#).



1. Make the keyboard discoverable by pressing the Discoverable button on the keyboard until the green LED (above the <0> key) flashes once per second. Make sure the **Secure** box is not checked and tap the **Connect** button on the screen.

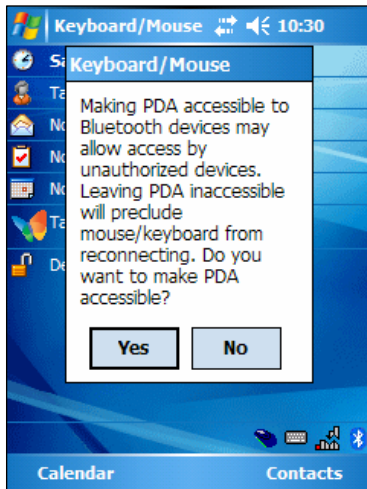
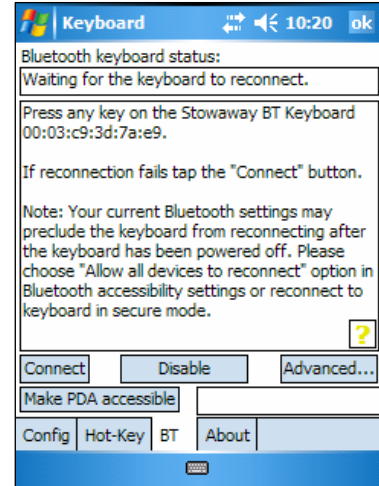
2. The mobile device will scan for the Stowaway Sierra Keyboard.



3. After the connection is made you may be prompted to verify the connection by typing 123 on the keyboard.

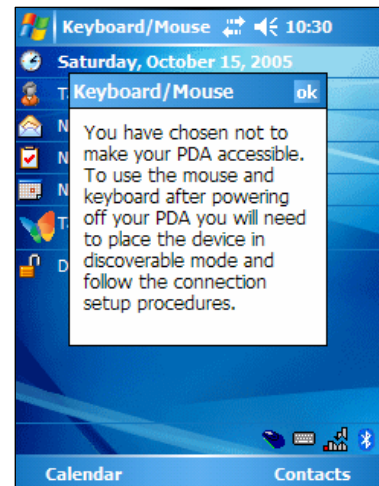
4. Depending on the mobile device's **Bluetooth Accessibility Settings** and Bluetooth Stack you may see this screen next. Tapping **Make PDA accessible** will set the Bluetooth Accessibility Settings to allow automatic reconnection of the mobile device and the keyboard when both are powered on and in range.

NOTE: This is a vulnerable configuration; please see [Unsecured Mode Settings](#) for more information.

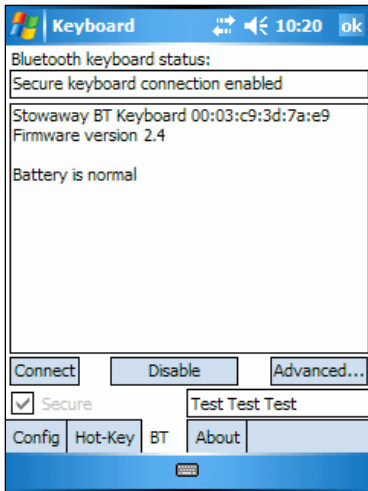


5. If you choose **Make PDA accessible** you will be prompted with this warning screen, tap **Yes** to finish making the connection.

6. If you choose not to **Make PDA accessible** by tapping **Cancel** or **No** you will be warned that future connections between the mobile device and the keyboard will need to be set up manually before each use.

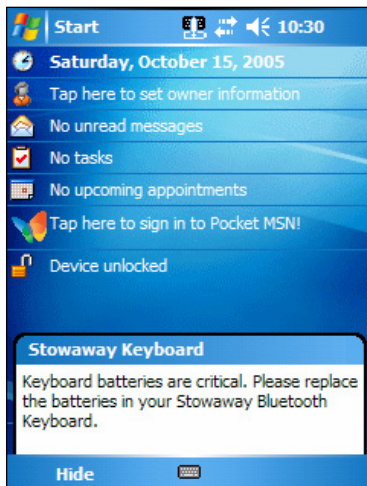
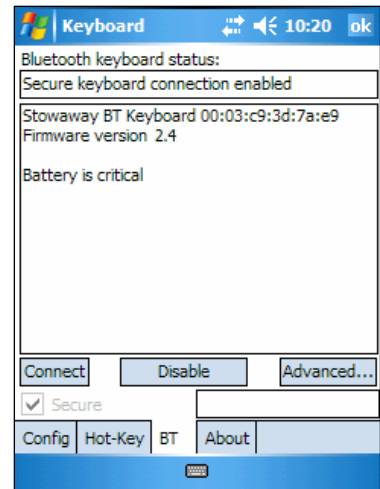


OTHER FEATURES



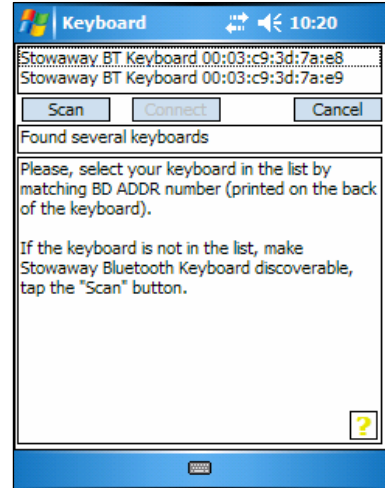
1. The **Bluetooth Status Page** displays the current state of the Bluetooth connection between your mobile device and the Stowaway Sierra keyboard. You can enable and disable the connection, and enter text to test the connection. Keyboard battery strength and firmware version are also displayed here. For more information on the **Advanced** tab see [Power Efficient Modes](#).

2. On the Bluetooth Status Page the keyboard battery information is displayed. The two states of the battery are:
 - a. **Normal** – This is the most common state of the battery.
 - b. **Critical** – This means the batteries are in imminent danger of no longer functioning.

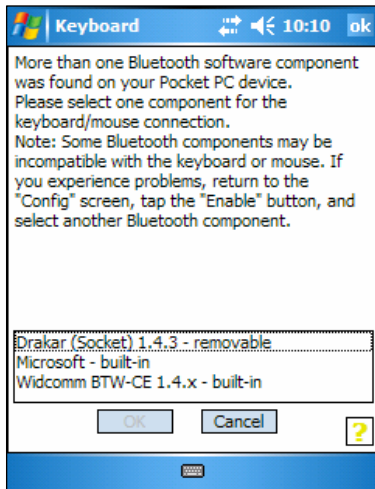


3. If the keyboard batteries reach a critical state a message will be displayed on the Today screen. **NOTE:** The keyboard will display a **RED LED** above the <0> key to show when the battery does not have enough power for the Bluetooth radio to function.

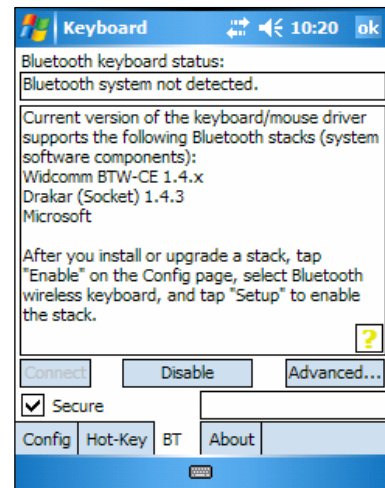
- If several Stowaway Sierra keyboards happen to be nearby and in **Discoverable Mode**, the scan will display all of these devices in the list. The keyboard ID (Bluetooth address) printed on the back of the keyboard should be compared with the IDs in the list and the desired keyboard selected.



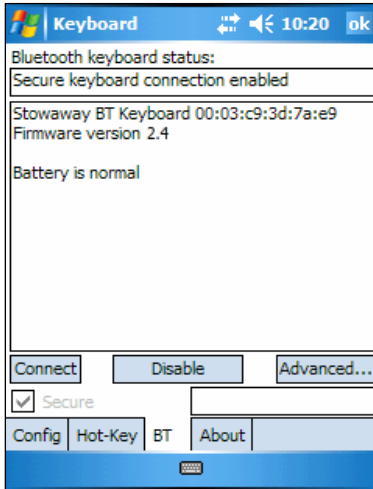
- If the application finds more than one Bluetooth stack on the mobile device, it will display a **Stack Selection** dialog box. If the device has a built-in Bluetooth system, that stack should be used. If the device is using a removable Bluetooth card such as a SDIO card, a different stack may need to be used. If the wrong stack is selected, a connection may not be possible. In such case, rerun the connection procedure and select the correct stack.



- If the keyboard driver displays the **Bluetooth system not detected** message, first verify that the driver has been loaded into **Main Memory**. Next, be sure that the device has not been upgraded with an incompatible version of the Bluetooth stack. In this case the keyboard software must be replaced with a compatible version.

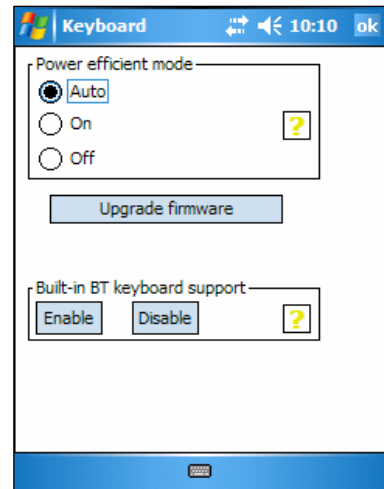


POWER EFFICIENT MODES



1. The Advanced tab allows access to different power efficiency modes.

2. The Stowaway Sierra keyboard is designed to operate in Power Efficient Mode in compliance with the Bluetooth specification. However, some mobile devices have difficulty operating effectively with Power Efficient Mode set to **ON**. The default setting is **Auto**, this allows the keyboard driver to determine whether to use Power Efficient mode or not. If the driver detects a mobile device which may work incorrectly in Power Efficient mode, it will turn it **OFF** automatically. You should turn **OFF** Power Efficient mode manually if you experience problems such as:



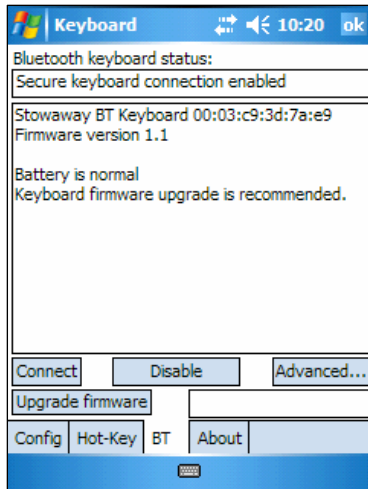
- Inability to **Scan** for other Bluetooth devices.
- Inability to **Connect** to other Bluetooth devices.
- Inability to **Discover** the mobile device and connect to it from another Bluetooth host.

NOTE: Turning off Power Efficient mode will shorten the battery life of your Bluetooth devices.

Power Efficient mode may be turned **ON** manually to extend battery life if the mobile device fully supports it or only one Bluetooth peripheral is used at a time.

FIRMWARE UPGRADE

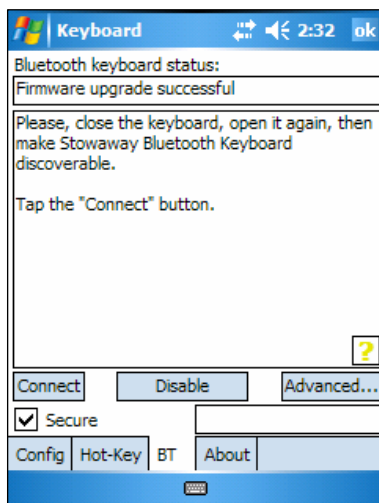
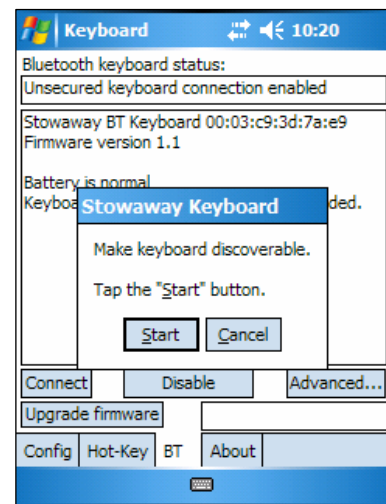
Depending on the version of your keyboard, you may see an **Upgrade Firmware** button on the **BT** page, and a message advising that the firmware be upgraded. This updates the keyboard's ROM software and will improve functionality and compatibility with more devices.



1. Tap **Upgrade firmware** to begin the process.
NOTE: This process may also be done from the **Advanced** page by tapping **Upgrade firmware**.

2. Press the Discoverable button until the green light above the <0> key flashes once per second, then tap **Start**.

NOTE: While the firmware is being upgraded be sure that the keyboard and mobile device are not disturbed and that no other Bluetooth activities are taking place.



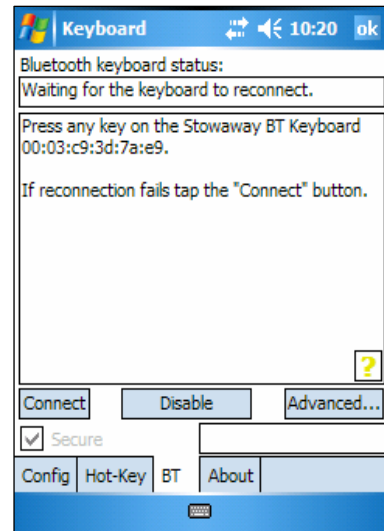
3. When the firmware upgrade process is completed, power cycle the keyboard by closing and reopening it.
NOTE: Following the upgrade, it will be necessary to reestablish a connection between the keyboard and the mobile device. See [Configuring the Keyboard to Your Device](#) for instructions.

Reconnecting the Stowaway Sierra keyboard

For information on *Unsecured* connections and re-connections see [Unsecured Mode Settings](#).

Despite a high degree of reliability, the Bluetooth connection could break for many reasons:

- The keyboard will power off when the right key panel is slid out and the Bluetooth connection will be lost.
- For power efficiency, the keyboard will automatically power down after an *idle period* (when there is no activity for approximately 5 minutes).
- When the mobile device is turned off, the established Bluetooth connection will be lost.
- When the mobile device and the keyboard move beyond the wireless range (~10m), the connection will be lost.



When any of these conditions occurs, the connection will be lost and the software will switch to waiting mode. To restore the connection, make sure the keyboard and mobile device are powered on and in range, then tap any key on the keyboard. The connection should be reestablished within 2-3 seconds but this may be delayed if the Bluetooth system on the mobile device is busy. For example, after the mobile device is powered on, it may take 10 or more seconds for the Bluetooth system to re-initialize.

NOTE: Do not press the Discoverable button. This will break the bond between the keyboard and the mobile device. If this happens, you will have to establish a new connection as described above.

Even when disconnected, the mobile device and the keyboard remain bonded. The keyboard will only reconnect to the bonded mobile device and the mobile device will only listen to the bonded keyboard. To break the bond press the Discoverable button for approximately 1 second or until the green LED flashes quickly. Normally the bond will not need to be broken unless the keyboard will be used with another mobile device or another keyboard will be used with the mobile device. Therefore, please avoid pressing the Discoverable button during normal operation. If this has happened, you will have to establish a new connection as described in the [Secured Connections](#) section above.

Unsecured Mode Settings

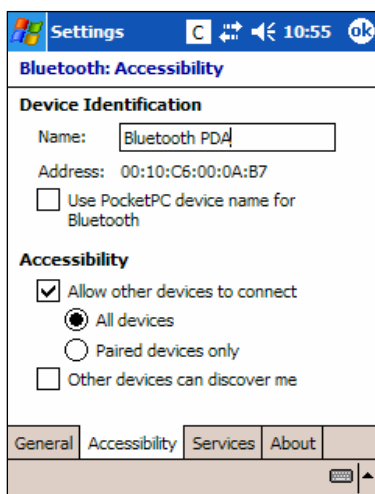
For those using Windows Mobile 2003 or a non-Microsoft Bluetooth stack, there are two Bluetooth settings that affect how the keyboard and the mobile device connect in **Unsecured** mode. **All Devices** and **Paired devices only**.

In order to automatically reconnect in **Unsecured** mode, the mobile device's Bluetooth settings must be set to allow **All Devices** to connect. Each manufacturer's Bluetooth configuration screens differ, but generally you will find the All devices and Paired devices only options within the Bluetooth Settings under the Accessibility tab. This set of screens may be available directly via a Bluetooth icon on the Today screen, or by navigating to the Start Menu > Settings > Connections tab.

If your device is set to Paired devices only you will be prompted to **Make PDA accessible** during the initial set up of the keyboard. This will change the settings to All devices.

NOTE: Because they are not encoded, Unsecured connections do not provide built-in signal encryption and are vulnerable to eavesdropping of the data transmitted between the keyboard and the mobile device.


If you choose to create an Unsecure connection and **Cancel** at the Make PDA accessible dialog, the settings will remain in the Paired devices only state. This means that before each use of the keyboard it will need to be made discoverable and the connection will need to be manually set up, see [Unsecured Connections](#) for instructions on how to do this.



Proper settings for automatic reconnection of keyboard in Unsecured mode using a non-Microsoft Bluetooth stack.

NOTE: For those using windows Mobile 5.0 or a Microsoft Bluetooth stack there are no adjustments to make, it is simply a matter of checking or unchecking the Secure box on the BT page.

Customizing Your Keyboard

Once the keyboard software is installed on the mobile device, you may customize the options. A keyboard icon  will appear on the screen while using Calendar, Contacts, or other applications.

- Tap the keyboard icon once to display the Input Method Toolbar.
- Tap the keyboard icon on the Input Method Toolbar to display the Keyboard Control Panel.

NOTE: Tapping the keyboard icon once at the Today screen once will first display the Keyboard Control Panel. Tapping the same keyboard icon will display the Input Method Toolbar.

Input Method Toolbar

There are four icons that appear on the Input Method Toolbar. This assumes that the *Stowaway Keyboard* input method is selected. The leftmost icon shows the state of the Bluetooth connection; there are three different states that can be indicated. A tap and hold on this icon will display a text message describing the state.



- This shows that the Bluetooth connection is active.



- This shows that the driver is waiting for the keyboard to reconnect.



- This shows that the connection is not setup.

The other three icons relate to other features of the keyboard driver.



- Tap this speaker icon to turn the keyboard clicking sounds on or off.



- Tap this keyboard icon to access the Keyboard Control Panel. This second keyboard icon appears above the keyboard icon that is visible in the lower right corner of the screen.



- Tap this help icon to access keyboard help topics and troubleshooting tips.

Keyboard Control Panel

On the *Config* tab:

- Tap **Enable** to choose which keyboard to enable. Tap **Disable** to turn off access to all keyboards.
- To see a visual indication if the keyboard is in Caps Lock or Num Lock mode, check or uncheck the **Show Capslock/Numlock notification** option.
- To select whether or not the keyboard icon will appear in the lower right corner of the Today screen, check or uncheck the **Show Icon on Today screen** option.
- To **increase** key repeat speed, drag the **Key Repeat Rate** slider to the **left**.
- To **decrease** key repeat speed, drag the **Key Repeat Rate** slider to the **right**.
- To **increase** key repeat delay, drag the **Key Repeat Delay** slider to the **right**.
- To **decrease** key repeat delay, drag the **Key Repeat Delay** slider to the **left**.
- To change the language layout in use, tap the down-arrow in the drop down box under **Layout**.

On the *Hot-Key* tab:

- Tap the down-arrow next to a number and select the application to associate with that number. When you press the <Fn> <number> key combination (e.g. <Fn> <4>), the selected application will launch. You may assign up to 10 applications in this manner.

On the *BT* tab:

- This is where the keyboard connection is performed and current connection status is displayed.

On the *About* tab:

- The About tab indicates the keyboard software version installed on your mobile device.

Disabling the Stowaway Sierra Keyboard

When the Stowaway Sierra keyboard is no longer needed, the keyboard driver may be disabled by tapping the **Disable** button on the **BT** or **Config** page. The **Connection is not set up** message will then be displayed on the **BT** page.

NOTE: Disabling the keyboard will break the bond between the keyboard and the mobile device.

NOTE: Disabling the Stowaway Sierra keyboard will not automatically turn off the Bluetooth radio. Conversely, turning the Bluetooth radio off while the Stowaway Sierra keyboard driver is still enabled will not work. Because of the behavior of the Bluetooth stack, the Bluetooth radio will automatically turn back on after a few seconds. To turn the radio off, the Stowaway Sierra keyboard must be disabled first.

To re-enable the connection, tap the **Connect** button on the **BT** page or tap **Enable** on the **Config** page. See [Configuring the Keyboard to Your Device](#) for complete instructions.

Secure Connection Overview

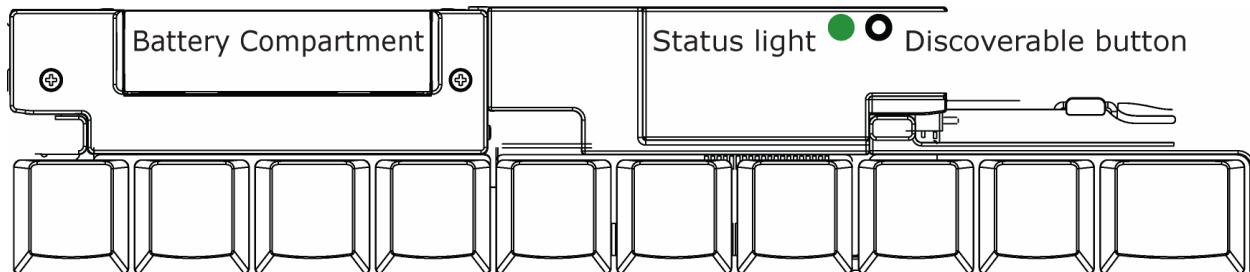
When a secure connection is established, the paired devices share a permanent security bond. This bond is established when two devices create and exchange a **Link Key**, this process is also known as **pairing**. Link Keys are based on a unique **Bluetooth Device Address**, an internally generated random number and a user defined **Passkey**.

With a Bluetooth connection, transmissions may be intercepted. In order to limit this exposure, a secure connection should be set up. This encrypts data sent from the keyboard to the mobile device, creating a **virtual cable**. This means that there is a 1:1 relationship between the mobile device and the keyboard and it will not respond to connection requests from other devices. The mobile device on the other hand will retain the ability to create new pairings with other devices.

The mobile device searches the Bluetooth radio band until it finds the keyboard. If the Secure box is checked it will prompt for a Passkey. Once completed, each time the mobile device and keyboard are powered on within range of each other, the devices will be reconnected with a key press.

Keyboard Status Light

When the keyboard is open and the right panel is slid in, there is a light above the <0> key that indicates the status of the keyboard.



- When the keyboard status light flashes a fast green light (approx. once per second) it is in **Discoverable mode**. This is the state that allows it to be detected by the mobile device. To place the keyboard into Discoverable mode, press the Discoverable button.
- When keyboard status light flashes a slow green light (approx. once every four seconds) it is connected to the mobile device and is available for use.
- When the keyboard status light is solid red for 5 seconds after power on, the batteries must be replaced before the keyboard can resume normal operation.
- When the keyboard is not connected to the mobile device the status light is dark. This happens when a connection or reconnection has not been established or the connection has been broken.

Using the Stowaway Sierra keyboard

- Commands joined by a dash “-” mean that the key combination must be pressed in order and with all keys held down at the same time.
- Commands joined by a plus “+” mean that the key following the “+” must be pressed after the initial key combination is pressed and released.

Moving the Cursor/Highlighting Text

You can easily navigate, position the cursor, and select text for subsequent editing functions with these key combinations:

Action	Shortcut
The cursor moves left (back) one word	<Ctrl>-<←>
The cursor moves right (forward) one word	<Ctrl>-<→>
Select (highlight) next character to the left	<Shift>-<←>
Select (highlight) next character to the right	<Shift>-<→>
Select (highlight) previous line	<Shift>-<↑>
Select (highlight) next line	<Shift>-<↓>
Select (highlight) the next word to the left	<Ctrl>-<Shift>-<←>
Select (highlight) the next word to the right	<Ctrl>-<Shift>-<→>
Select (highlight) the previous paragraph	<Ctrl>-<Shift>-<↑>
Select (highlight) the next paragraph	<Ctrl>-<Shift>-<↓>
Beginning of the line	<Fn>-<←>
End of the line	<Fn>-<→>
Page up one page at a time	<Fn>-<↑>
Page down one page at a time	<Fn>-<↓>
The cursor moves to the beginning of the document	<Ctrl>-<Fn>-<←>
The cursor moves to the end of the document	<Ctrl>-<Fn>-<→>
The cursor moves to the top of the page	<Ctrl>-<Fn>-<↑>
The cursor moves to the bottom of the page	<Ctrl>-<Fn>-<↓>

On-Screen Button and Editing Shortcuts

From the keyboard, you can activate on-screen buttons such as (OK) or (X) and access application editing functions. Refer to the following table for the appropriate keyboard shortcut.

On-Screen Button or Editing Function	Shortcut
Generate an ESC	<Fn>--<Tab>
Turns on NumLock mode	<Fn>--<CapsLock>
Send (simulates a screen tap on Send)	<Fn>--<G>
OK	<Fn>--<Enter>
Close a window or application	<Fn>--<N>
New item	<Ctrl>--<N> or <Fn>--<Q>
Select all	<Ctrl>--<A>
Undo last action	<Ctrl>--<Z>
Cut selected text	<Ctrl>--<X>
Copy selected text	<Ctrl>--<C>
Paste cut or copied text	<Ctrl>--<V>
Emulate left Softkey (where applicable)	<Fn>--<Left Spacebar>
Emulate right Softkey (where applicable)	<Fn>--<Right Spacebar>

Launching and Navigating Applications

To launch software applications and navigate among them, refer to the following table:

Action	Shortcut
Start Phone call (where applicable)	<Fn>+<D>
End Phone call (where applicable)	<Fn>+<F>
Launch Today screen	<Fn>--<J>
Access Programs screen	<Fn>--<K>
Access Settings screen	<Fn>--<M>
Launch Calendar	Top Application Key
Launch Contacts	Second Application Key
Launch Inbox	Third Application Key
Launch Internet Explorer	Bottom Application Key
Launch up to 10 user selected applications (refer to "Hot-Key tab" section for more information)	<Fn>--<number>
Toggle among open and recently used programs.	<Alt>--<Tab> (Hold the Alt key and hit the Tab key until the program you want is selected, then release keys to make it active)

Windows Mobile 2003 Menu Navigation

NOTE: The following table only applies to those using Windows Mobile 2003 (Pocket PC). For users of Windows Mobile 5.0 see below.

Action	Key command
To activate a program's menu bar at the bottom of the mobile device screen and select a main menu item use one of these 2 methods: 1. Press and release the <Alt> key, then use the arrow keys to scroll left and right until the main menu item you want is highlighted. or 2. Press and hold the <Alt> key, then press the letter key that corresponds to the first letter of the main menu item (e.g. to access the Tools menu in Word, hold the <Alt> key then press <T>).	<Alt>+<→> or <Alt>+<←> <Alt>–first letter of main menu item
To access a program's submenu, first select a main menu item and then navigate the submenu using the up and down arrow keys. Press the <Enter> key to choose the submenu item.	<↑> or <↓> <Enter>

Windows Mobile 5.0 Menu Navigation

At the bottom of the screen are two menu items that vary by application and context. They can be reproduced with the keyboard by pressing <Fn>–<Left Spacebar> for the left menu item and <Fn>–<Right Spacebar> for the right menu item.

Toolbar Navigation

Action	Key command
<p>To access a program's toolbar at the top of the mobile device's screen:</p> <ol style="list-style-type: none"> 1. Press and hold the <AltGr> key and then press the <Tab> key. 2. Use the left and right arrow keys to highlight the Tool bar item you want. 3. Press <Enter> to select the highlighted tool bar item. 4. Use the up and down arrow keys to highlight the submenu item you want. 5. Press <Enter> to select the highlighted submenu item. 	<p><AltGr>--<Tab> <←> or <→> <Enter> <↑> or <↓> <Enter></p>

Other Shortcuts

Several shortcuts shown below provide you additional flexibility when using the Stowaway Sierra keyboard:


Action	Shortcut
Show/hide the Input Method Toolbar	<Alt>--<↑>
Launch the Keyboard Control Panel	<Alt>--<↓>
Turns off the mobile device. NOTE: Pressing a keyboard key will not turn it back on.	<Fn>--<Backspace>

International and Extended Character Set

Character	Description	Shortcut
å	Dot accent	<Ctrl>--<Shift>--<2>+<a>
Å	Dot accent	<Ctrl>--<Shift>--<2>+<Shift>--<a>
¢	Cents	<Ctrl>--<Shift>--<4>
â, ê, î, ô, û	Circumflex accent	<Ctrl>--<Shift>--<6>+<letter>
Â, Ê, Î, Ô, Û	Circumflex accent	<Ctrl>--<Shift>--<6>+<Shift>--<letter>
æ	æ	<Ctrl>--<Shift>--<7>+<a>
Æ	Æ	<Ctrl>--<Shift>--<7>+<Shift>--<a>
œ	œ	<Ctrl>--<Shift>--<7>+<o>
Œ	Œ	<Ctrl>--<Shift>--<7>+<Shift>--<o>
ß	Beta	<Ctrl>--<Shift>--<7>+<s>
ä, ë, ï, ö, ü, ÿ	Dieresis accent (umlaut)	<Ctrl>--<Shift>--<;>+<letter>
Ä, È, Ì, Ö, Ü, ÿ	Dieresis accent (umlaut)	<Ctrl>--<Shift>--<;>+<Shift>--<letter>
á, é, í, ó, ú, ý	Acute accent	<Ctrl>--<'>+<letter>
Á, É, Í, Ó, Ú, Ý	Acute accent	<Ctrl>--<'>+<Shift>--<letter>
ç	Cedilla	<Ctrl>--<, >+<c>
Ç	Cedilla	<Ctrl>--<, >+<Shift>--<c>
ø	Lower case naught	<Ctrl>--</>+<o>
Ø	Capital naught	<Ctrl>--</>+<Shift>--<o>
à, è, ì, ò, ù	Grave accent	<Ctrl>--<`>+<letter>
À, È, Ì, Ò, Ù	Grave accent	<Ctrl>--<`>+<Shift>--<letter>
ã, õ, ñ	Tilde accent	<Ctrl>--<Shift>--<`>+<letter>
Ã, Õ, Ñ	Tilde accent	<Ctrl>--<Shift>--<`>+<Shift>--<letter>
¡	Inverted Exclamation	<AltGr>--<1>
½	One-half	<AltGr>--<2>
¾	Three-quarter	<AltGr>--<3>
¼	One-quarter	<AltGr>--<4>
÷	Division	<AltGr>--<->
±	Plus-Minus	<AltGr>--<=>
®	Registered trademark	<AltGr>--<r>
™	Trademark	<AltGr>--<t>
¶	Paragraph symbol	<AltGr>--<\>
§	Section	<AltGr>--<s>
°	Degree	<AltGr>--<d>
ƒ	Script F	<AltGr>--<f>
©	Copyright	<AltGr>--<c>
•	Bullet	<AltGr>--
μ	Micro	<AltGr>--<m>
¿	Inverted Question Mark	<AltGr>--</>
€	Euro	<Fn>--<e>
¥	Yen	<Fn>--<y>
£	Pound (British)	<Fn>--<p>

Frequently Asked Questions

Q: What should I do when I type on the keyboard and nothing happens?

- Check that mobile device's batteries are charged.
- Verify that keyboard has sufficient power to operate.
- Verify that the right keyboard panel is fully slid inward.
- Check to make sure that the keyboard software is installed properly according to the instructions.
- Check the **BT** tab of the **Keyboard Control Panel** to make sure the **Stowaway BT Keyboard** is enabled.
- Check the **Config** tab of the **Keyboard Control Panel** to make sure you've selected the appropriate keyboard type. After tapping **Enable**, you should select **Bluetooth wireless keyboard**.
- Use the Keyboard Help icon to launch the help. 

Q: I tried to turn off the Bluetooth radio and it automatically turned back on, what should I do?

The Stowaway Sierra keyboard must be disabled before the Bluetooth radio can be turned off. See the [Disabling the Stowaway Sierra Keyboard](#) section for more information.

Q: What are the Serial and IR tabs of the Keyboard Control Panel for?

If you should ever select and setup the **Connected serial keyboard** or **Infrared wireless keyboard** option on the **Config** tab of the **Keyboard Control Panel**, you will see a **Serial** and/or **IR** tab added to the **Keyboard Control Panel**. Even if you change back to the **Stowaway BT keyboard** the **Serial** and/or **IR** tab will remain in the **Keyboard Control Panel**. Serial keyboards use a physical connection versus a wireless connection to a mobile device. Only users of Stowaway keyboards that use a physical connection will use the **Serial** tab. Infrared keyboards use an infrared line of sight connection to a mobile device. Only users of **Stowaway Infrared Wireless** keyboards will use the **IR** Tab. Users of the **Stowaway BT keyboard** can ignore this tab.

Q: What is the Stowaway Travel Mouse button for?

This is used to setup the optional Bluetooth mouse. This is only for users that also have the Stowaway Travel Mouse.

Q: I received an error message saying the keyboard driver cannot find a supported Bluetooth component, what should I do?

The current version of the keyboard driver supports Broadcom Bluetooth for Windows CE (BTW-CE) version $\geq 1.4.x$, Drakar (Socket) and Microsoft Bluetooth stacks. If you have a different version, you may need to check for upgrades for either the Bluetooth stack or for the keyboard driver. (With some Bluetooth stacks it is possible to determine the version of the stack installed on your mobile device; locate the Bluetooth icon and tap it with the stylus to open the application. Find the Bluetooth About tab and tap to open the associated page. There you will find the version and build for the installed Bluetooth stack.)

Should the keyboard driver find more than one Bluetooth component on your mobile device (for example if you have Bluetooth built-in and a removable Bluetooth card), then a dialog box will be displayed with a choice of available components. You will need to choose the Bluetooth component that you wish to be used with the Bluetooth keyboard and tap OK.

NOTE: Some Bluetooth components may not work with the keyboard. If you are not able to connect to the keyboard, you may have to return to the *Config* page, tap *Enable* again, select *Bluetooth wireless keyboard*, tap *Setup*, and then select another Bluetooth component.

Q: My keyboard was connected and character input to mobile device worked fine, but after a certain *idle period*, it seems that the connection was lost.

Refer to the [Reconnecting the Stowaway Sierra keyboard](#) and [Unsecured Mode Settings](#) sections.

Q: How do I uninstall the keyboard driver?

Select Start=>Settings=>System tab=>Remove Programs. Select *Stowaway Keyboard and Mouse Driver* from the list of applications then tap the *Remove* button.

Q: How can I preserve battery life?

Sliding the right panel outward will turn off the Bluetooth radio and prevent battery drain.

Legal Notices

Think Outside shall not be liable for technical or editorial errors or omissions contained herein or for special, indirect, incidental or consequential damages whatsoever in connection with the furnishing, performance, or use of this material. The information in this document is provided "as is" without express or implied warranty of any kind, including, but not limited to, the implied warranties of merchantability and fitness for a particular purpose, and is subject to change without notice. The warranties for Think Outside products are set forth in the express limited warranty statements accompanying such products. Nothing herein should be construed as constituting an additional warranty. Think Outside assumes no responsibility for any loss or claims by third parties, which may arise through the use of this software. Think Outside does not warrant that the software will be error-free, nor that the software will run uninterrupted. Think Outside assumes no responsibility for any damage or loss caused by deletion of data as a result of malfunction, dead battery, or repairs. Be sure to make backup copies of all important data on other media to protect against data loss. Information in this document is subject to change without notice.
©2006 Think Outside, Inc. All rights reserved.

Reproduction of this document in any manner whatsoever without the written permission of Think Outside, Inc. is strictly forbidden.

Trademarks

Think Outside and Stowaway are registered trademarks of Think Outside, Inc. Broadcom is a registered trademark of Broadcom Corporation. Bluetooth and the Bluetooth logos are trademarks owned by Bluetooth SIG, Inc., U.S.A. and licensed to Broadcom Corporation. ActiveSync, Windows Mobile, Windows and Outlook are registered trademarks of Microsoft Corporation. Other trademarks and trade names may be used in this document to refer to either the entities claiming the marks and names or their products. No proprietary interest in other trademarks and trade names is claimed.

Obtaining Warranty Service

Customer must contact Think Outside within the applicable warranty period to obtain warranty service authorization. Dated proof of original purchase will be required for warranty service, repair, or replacement. Products or parts shipped by Customer to Think Outside must be sent postage-paid and packaged appropriately for safe shipment. Think Outside is not responsible for Customer products received without a warranty service authorization and may be rejected. Repaired or replacement products will be shipped to Customer at Think Outside's expense. All products or parts that are replaced become the property of Think Outside. The repair and replacement process for products or parts in locations outside of the United States will vary depending on Customer's location.

Support@ThinkOutside.com

Think Outside
10 South Third Street
Fifth Floor
San Jose, California 95113
United States of America
www.thinkoutside.com

Registering Your Product

To register your Stowaway keyboard product, please visit www.thinkoutside.com/registration/registration.html and complete the online form.

Important Battery Information

- Keep battery away from children.
- Always replace old, weak or worn-out batteries promptly and recycle or dispose of them properly. Before inserting a new battery, the battery compartment should be cleaned. If fluid from the battery comes into contact with skin or clothes, flush with water immediately.
- Remove the battery if the device will be inactive longer than a month.
- Do not open, puncture or otherwise damage the battery.
- Do not use fire to dispose of battery.

Released battery electrolyte is corrosive and can cause damage to the eyes and skin and may be toxic if swallowed.

Comfortable Typing

Research suggests that physical discomfort and injury to nerves, tendons, and muscles may be related to repetitive motion, an improperly set up work area, incorrect body posture, and poor work habits.

To reduce the risk of injury, follow these precautions:

- Stand, stretch, and move around several times every hour.
- Every once in a while, work on a different task with your hands. Avoid repetitive motions. Use shortcut keys to move efficiently and avoid repetitive, awkward movement.
- Type gently and lightly.
- Relax your shoulders and keep your elbows at your sides. Adjust the keyboard so that you don't have to stretch to reach it.
- Adjust your position so that you don't have to bend your wrists to type; avoid placing your wrists on a sharp edge.

If you feel discomfort or numbness in your hands, wrists, arms, shoulders, neck or back while typing, get the advice of a qualified medical professional.

Important Notes about Bluetooth Devices

The Stowaway Sierra keyboard can emit radio frequency (RF) energy whenever the green LED is flashing. Care should be taken when used around medical devices or equipment. For specific information, consult with the product manufacturer or your physician before use. To stop interference, close the keyboard or remove its battery.

The Stowaway Sierra keyboard should not be used on any aircraft. Before boarding an aircraft, close the keyboard to ensure there is no RF transmission.

Regulatory Notices

Electromagnetic Interference (EMI) is any signal or emission, radiated in free space or conducted along power or signal leads, that endangers the functioning of radio navigation or other safety service or seriously degrades, obstructs, or repeatedly interrupts a licensed radio communication service. Radio communications services include but are not limited to AM/FM commercial broadcast, television, cellular services, radar, air-traffic control, pager, and Personal Communication Services (PCS). These licensed services, along with unintentional radiators such as digital devices, including computers, contribute to the electromagnetic environment.

Electromagnetic Compatibility is the ability of items of electronic equipment to function properly together in the electronic environment. While this keyboard has been designed and determined to be compliant with regulatory agency limits for EMI, there is no guarantee that interference will not occur in a particular installation. If this equipment does cause interference with radio communications services, which can be determined by turning the equipment off and on, you are encouraged to try to correct the interference by one or more of the following measures:

- Reorient the receiving antenna.
- Relocate the keyboard with respect to the receiver.
- Move the keyboard away from the receiver.

If necessary, consult an experienced radio/television technician for additional suggestions.

FCC Notices (U.S. Only)

Most Stowaway keyboards are classified by the Federal Communications Commission (FCC) as Class B digital devices.

Class B

This equipment has been tested and found to comply with the limits for a Class B digital device pursuant to Part 15 of the FCC Rules. These limits are designed to provide reasonable protection against harmful interference in a residential installation. This equipment generates, uses, and can radiate radio frequency energy and, if not installed and used in accordance with the manufacturer's instruction manual, may cause interference with radio communications. However, there is no guarantee that interference will not occur in a particular installation. If this equipment does cause harmful interference to radio or television reception, which can be determined by turning the equipment off and on, you are encouraged to try to correct the interference by one or more of the following measures:

- Reorient or relocate the receiving antenna.
- Increase the separation between the equipment and the receiver.
- Consult the dealer or an experienced radio/television technician for help.

This device complies with Part 15 of the FCC Rules. Operation is subject to the following two conditions: (1) This device may not cause harmful interference, and (2) this device must accept any interference received, including interference that may cause undesired operation.

FCC Caution: Any changes or modifications not expressly approved by the party responsible for compliance could void the user's authority to operate this equipment.

FCC Radiation Exposure Statement

This equipment complies with FCC radiation exposure limits set forth for an uncontrolled environment. End users must follow the specific operating instruction for satisfying RF exposure compliance. This transmitter must not be co-located or operating in conjunction with any other antenna or transmitter.

FCC Identification Information

The following information is provided on the device or devices covered in this document in compliance with FCC regulations:

- Model number(s):

STBT01

- Company name:

Think Outside, Inc.
10 South Third Street
Fifth Floor
San Jose, California 95113
United States of America
(408) 297-5100

IC Notice (Canada Only)

Most Stowaway keyboards are classified by the Industry Canada (IC) Interference-Causing Equipment Standard #3 (ICES-003) as Class B digital devices. To determine which classification (Class A or B) applies to your keyboard, examine all registration labels located on your keyboard. A statement in the form of "IC Class A ICES-003" or "IC Class B ICES-003" will be located on one of these labels. Note that Industry Canada regulations provide that changes or modifications not expressly approved by Think Outside could void your authority to operate this equipment.

IC Radiation Exposure Statement

This equipment complies with IC radiation exposure limits set forth for an uncontrolled environment. End users must follow the specific operating instruction for satisfying RF exposure compliance. This transmitter must not be co-located or operating in conjunction with any other antenna or transmitter.

This Class B (or Class A, if so indicated on the registration label) digital apparatus meets the requirements of the Canadian Interference-Causing Equipment Regulations.

Cet appareil numérique de la Classe B (ou Classe A, si ainsi indiqué sur l'étiquette d'enregistrement) respecte toutes les exigences du Règlement sur le Matériel Brouilleur du Canada.

CE Notice (European Union)

Marking by **CE** the symbol indicates compliance of this Stowaway keyboard to the Electromagnetic Compatibility Directive and the Low Voltage Directive of the European Union. Such marking is indicative that this Stowaway keyboard meets the following technical standards:

- EN 5502 – “Information Technology Equipment – Radio Disturbance Characteristics – Limits and Methods of Measurement.”
- EN 55024 – “Information Technology Equipment - Immunity Characteristics - Limits and Methods of Measurement.”
- EN 60950 – “Safety of Information Technology Equipment.”

NOTE: EN 55022 emissions requirements provide for two classifications:

- Class A is for typical commercial areas.
- Class B is for typical domestic areas.

This Think Outside device is classified for use in a typical Class B domestic environment.

EN 55022 Compliance (Czech Republic Only)

This device belongs to Class B devices as described in EN 55022, unless it is specifically stated that it is a Class A device on the specification label. The following applies to devices in Class A of EN 55022 (radius of protection up to 30 meters). The user of the device is obliged to take all steps necessary to remove sources of interference to telecommunication or other devices.

Pokud není na typovém štítku počítače uvedeno, že spadá do třídy A podle EN 55022, spadá automaticky do třídy B podle EN 55022. Pro zařízení zařazená do třídy A (ochranné pásmo 30m) podle EN 55022 platí následující. Dojde – li k rušení telekomunikačních nebo jiných zařízení, je uživatel povinen provést taková opatření, aby rušení odstranil.

Europe – CE Declaration of Conformity

EN 301 489-1 (2004), EN 301 489-17 (2002), EN 300 328-1 (2001), EN 300 328-2 (2001), EN 60950 (2001)



English	Hereby, Think Outside, Inc. declares that this STBT01 is in compliance with the essential requirements and other relevant provisions of Directive 1999/5/EC.
French	<p>Par la présente Think Outside, Inc. Déclare que l'appareil STBT01 est conforme aux exigences essentielles et aux autres dispositions pertinentes de la directive 1999/5/CE.</p> <p>Par la présente, Think Outside, Inc. Déclare que ce STBT01 est conforme aux exigences essentielles et aux autres dispositions de la directive 1999/5/CE qui lui sont applicables.</p>
German	<p>Hiermit erkält Think Outside, Inc., dass sich <i>dieser/diese/dieses</i> STBT01 in Übereinstimmung mit den grundlegenden Anforderungen und den anderen relevanten Vorschriften der Richtlinie 1999/5/EG befindet. (BMWi)</p> <p>Hiermit erkält Think Outside, Inc. die Übereinstimmung des Gerätes tastatur mit den grundlegenden Anforderungen und den anderen relevanten Festlegungen der Richtlinie 1999/5/EG. (Wien)</p>
Italian	Con la presente Think Outside, Inc. Dichiaro che questo STBT01 è conforme ai requisiti essenziali ed alle altre disposizioni pertinenti stabilite dalla direttiva 1999/5/CE.
Spanish	Por medio de la presente Think Outside, Inc. Declara que el STBT01 cumple con los requisitos esenciales y cualesquiera otras disposiciones aplicables o exigibles de la Directiva 1999/5/CE.

Portuguese	Think Outside, Inc. Declara que este STBT01 está conforme com os requisitos essenciais e outra disposições da Directiva 1999/5/EC.
Finnish	Think Outside, Inc. Vakuuttaa täten että STBT01 tyyppinen laite on direktiivin 1999/5/EY oleellisten vaatimusten ja sitä koskevien direktiiven muiden ehtojen mukainen.
Dutch	Hierbij verklaart Think Outside, Inc. Dat het toestel STBT01 in overeenstemming is met de essentiële eisen en de andere relevante bepalingen van richtlijn 1999/5/EG.
Swedish	Härmed intygar Think Outside, Inc. Att denna STBT01 står i överensstämmelse med de väsentliga egenskapskrav och övriga relevanta bestämmelser som framgår av direktiv 1999/5/EG.
Danish	Undertegnede Think Outside, Inc. Erklærer herved, at følgende udstyr STBT01 overholder de væsentlige krav og øvrige relevante krav i direktiv 1999/5/EF.
Greek	ΜΕ ΤΗΝ ΠΑΡΟΥΣΑ Think Outside, Inc. ΔΗΛΩΝΕΙ ΟΤΙ STBT01 ΣΥΜΜΟΡΦΩΝΕΤΑΙ ΠΡΟΕ ΤΙΣ ΟΥΣΙΩΔΕΙΣ ΑΠΑΙΤΗΣΕΙΣ ΚΑΙ ΤΙΣ ΛΟΙΠΕΣ ΣΧΕΤΙΚΕΣ ΔΙΑΤΑΞΕΙΣ ΤΗΣ ΟΔΗΓΙΑΣ 1999/5/E

France

Some areas of France have a restricted frequency band. The worst case maximum authorized power indoors is:

10 mW for the entire 2.4 GHz band (2400 MHz–2483.5 MHz).

100 mW for frequencies between 2446.5 MHz and 2483.5 MHz (NOTE— Channels 10 through 13 inclusive operate in the band 2446.6 MHz to 2483.5 MHz).

There are few possibilities for outdoor use: On private property or on the private property of public persons, use is subject to a preliminary authorization procedure by the Ministry of Defence, with maximum authorized power of 100 mW in the 2446.5–2483.5 MHz band. Use outdoors on public property is not permitted.

In the departments listed below, for the entire 2.4 GHz band:
Maximum authorized power indoors is 100 mW.
Maximum authorized power outdoors is 10 mW.

Europe – WEEE Directive

Waste Electrical and Electronic Equipment (WEEE) Directive.



In the European Union, this label indicates that this product should not be disposed of with household waste. It should be deposited at an appropriate facility to enable recovery and recycling.

Waste Electrical and Electronic Equipment (WEEE – Entsorgung von elektrischen und elektronischen Geräten) Anweisung



In der europäischen Union zeigt dieses Etikett, dass dieses Produkt nicht in den Hausmüll gelangen sollte. Es muss zu einer geeigneten Einrichtung gebracht werden, in der Wiederherstellung und Recycling möglich ist.

Direttiva sullo smaltimento dei rifiuti elettrici ed elettronici (WEEE).



Nei paesi dell'Unione Europa, questo marchio indica che il prodotto non deve essere smaltito insieme ai rifiuti domestici. Dovrà essere depositato presso una struttura apposita per permetterne il recupero ed il riciclaggio.

Directive sur l'élimination des équipements électriques et électroniques (WEEE).



Dans l'Union Européenne, ce label indique que ce produit ne doit pas être éliminé avec les ordures ménagères. Il doit être déposé dans un lieu approprié pour permettre la récupération et le recyclage.

Directorio inútil del equipo eléctrico y electrónico (WEEE).



En la unión europea, esta etiqueta indica que este producto no se debe disponer con la basura de la casa. Debe ser depositada en una facilidad apropiada para permitir la recuperación y el reciclaje.

Features and Specifications Summary

- Small, foldaway design makes it easy to put in your pocket or briefcase.
- Simple connection compatibility with your Mobile device via Bluetooth.
- 5 row design for greatest comfort and ease of use.
- Full size QWERTY keyboard layout for optimum comfort while typing. Meets ISO/IEC Specification 9995 for full-size keyboards.
- User-programmable shortcut keys for faster access to applications.
- On-screen menu and toolbar navigation via keyboard
- Does not draw power from your Mobile device.
- Detachable device stand.

Dimensions Open: 13.8" x 5.1" x 0.5"
350mm x 129mm x 12mm

Dimensions Closed: 5.0" x 3.5" x 0.9"
128mm x 90mm x 23mm

Weight (including batteries): 10.7 ounces
303 grams

Operating Temperature Range: 32° to 120°F
0° to 49°C

Typical Battery Life:
Continuous Operation: ~80 hours
Typical usage: ~2 months
Standby: ~10000 hours

RF Technical specifications

RF output power: Class 2. Maximum output power is 2.5mW (4 dBm)
Protocol: Bluetooth specification v. 1.2 compliant
Bluetooth HID Profile v. 1.0 compliant
Frequency range: 2.4 – 2.4835GHz
Type of Modulation: GFSK (Gaussian Frequency Shift Keying)
Signal Type: FHSS (Frequency Hopping Spread Spectrum)

©2006 Think Outside, Inc.

P/N: 102096A

Free Manuals Download Website

<http://myh66.com>

<http://usermanuals.us>

<http://www.somanuals.com>

<http://www.4manuals.cc>

<http://www.manual-lib.com>

<http://www.404manual.com>

<http://www.luxmanual.com>

<http://aubethermostatmanual.com>

Golf course search by state

<http://golfingnear.com>

Email search by domain

<http://emailbydomain.com>

Auto manuals search

<http://auto.somanuals.com>

TV manuals search

<http://tv.somanuals.com>