



Service Procedures
for the
Model SL31-31 Dryer
Hot Surface Ignitor Gas

American Dryer Corporation
88 Currant Road
Fall River MA 02720-4781 USA
Telephone: (508) 678-9000 / Fax: (508) 678-9447
e-mail: techsupport@amdry.com

www.amdry.com

Part No. 450376

Retain This Manual in a Safe Place for Future Reference

This product embodies advanced concepts in engineering, design, and safety. If this product is properly maintained, it will provide many years of safe, efficient, and trouble free operation.

Only qualified technicians should service this equipment.

OBSERVE ALL SAFETY PRECAUTIONS displayed on the equipment or specified in the installation manual included with the dryer.

The following "FOR YOUR SAFETY" caution must be posted near the dryer in a prominent location.

FOR YOUR SAFETY

Do not store or use gasoline or other flammable vapors and liquids in the vicinity of this or any other appliance.

POUR VOTRE SÉCURITÉ

Ne pas entreposer ni utiliser d'essence ni d'autres vapeurs ou liquides inflammables à proximité de cet appareil ou de tout autre appareil.

We have tried to make this manual as complete as possible and hope you will find it useful. The manufacturer reserves the right to make changes from time to time, without notice or obligation, in prices, specifications, colors, and material, and to change or discontinue models. The illustrations included in this manual may not depict your particular dryer exactly.

IMPORTANT

For your convenience, log the following information:

DATE OF PURCHASE _____ **MODEL NO.** SL31-31

DISTRIBUTOR'S NAME _____

SERIAL NUMBER(S) _____

For replacement parts, contact the distributor from which the dryer was purchased or contact:

American Dryer Corporation
88 Currant Road
Fall River MA 02720-4781 USA
Telephone: (508) 678-9000 / Fax: (508) 678-9447
e-mail: techsupport@amdry.com
www.amdry.com

"IMPORTANT NOTE TO PURCHASER"

Information must be obtained from your local gas supplier on the instructions to be followed if the user smells gas. These instructions must be posted in a prominent location near the dryer.

IMPORTANT

You must disconnect and lockout the electric supply and the gas supply or the steam supply before any covers or guards are removed from the machine to allow access for cleaning, adjusting, installation, or testing of any equipment per OSHA (Occupational Safety and Health Administration) standards.

Please observe all safety precautions displayed on the equipment and/or specified in the installation manual included with the dryer.

CAUTION

Dryer(s) should never be left unattended while in operation.

“Caution: Label all wires prior to disconnection when servicing controls. Wiring errors can cause improper operation.”

«Attention: Lor des opérations d’entretien des commandes étiqueter tous fils avant de les déconnecter. Toute erreur de câblage peut être une source de danger et de panne.»

WARNING

Children should not be allowed to play on or near the dryer(s). Children should be supervised if near dryer(s) in operation.

Under no circumstances should the dryer door switch(es), lint door/drawer switch(es), or heat safety circuit(s) ever be disabled.

The dryer must never be operated with any of the back guards, outer tops, or service panels removed. Personal injury or fire could result.

The dryer must never be operated without the lint filter/screen in place, even if an external lint collection system is used.

FOR YOUR SAFETY

Do not dry mop heads in the dryer. Do not use dryer in the presence of dry cleaning fumes.

The dryers must not be installed or stored in an area where it will be exposed to water and/or weather.

The wiring diagram for the dryer is located in the front electrical control box area.

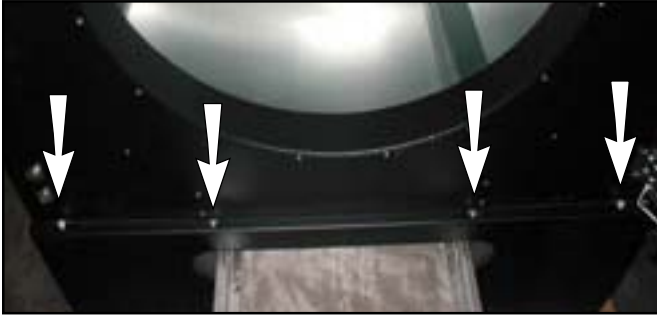
Table of Contents

Part Locations and Removal	4
Lower Front Panel Removal	4
Upper Front Panel Removal	4
Top Cover Removal	4
Middle Panel Removal	4
Lint Box/Blower Assembly Removal	5
Gas Valve/Ignition System Removal	5
Oven Chamber Removal	6
Gas Valve/Ignition System Components	6
Oven Housing Components	6
Tumbler Support	
Wheel Assembly Replacement	6
Tumbler Alignment	7
Belt Replacement	8
Placing the Belt Back on the Motor Sheave	8
Electrical Component Locations	9
Electrical Panel	9
Sail Switch and Axial Probe Assembly	9
Exhaust Probe, Exhaust Hi-limit, and Lint Drawer Switch	9

Part Locations and Removal

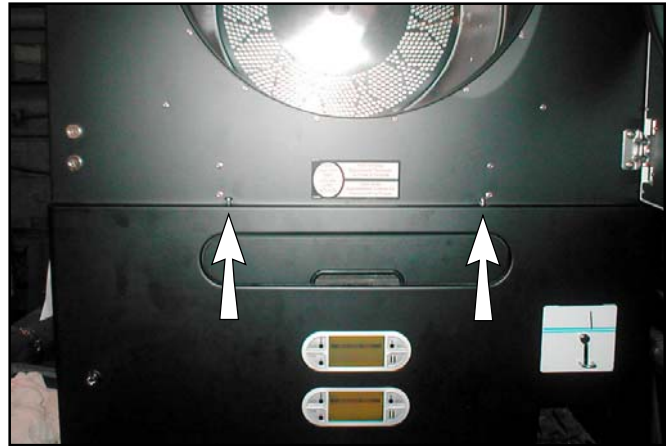
LOWER FRONT PANEL REMOVAL:

Remove the lint drawer. Remove the four screws located just below the loading door. Tilt the top of the panel out and lift the panel up and away from the dryer.



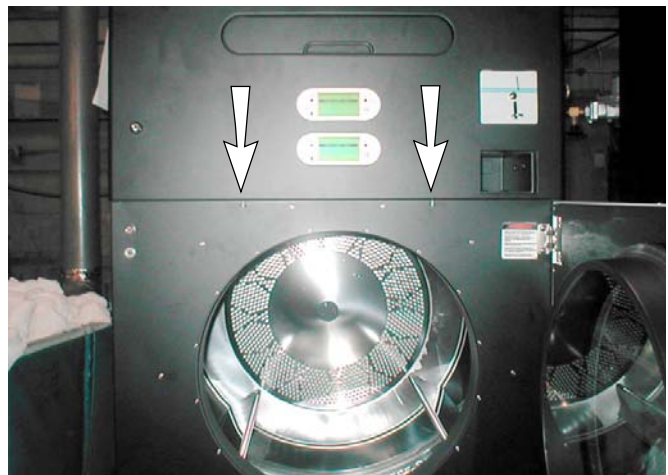
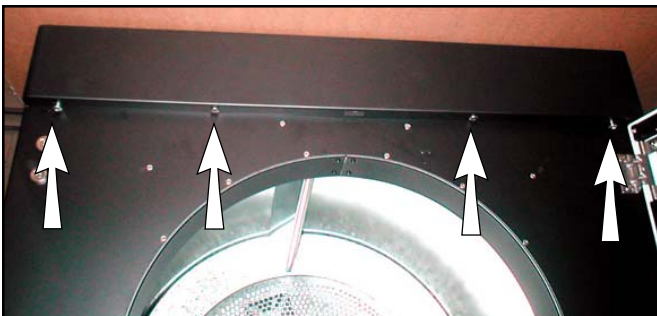
MIDDLE PANEL REMOVAL:

Remove the four/two screws along bottom of panel. Next, remove four/two screws along top of panel.



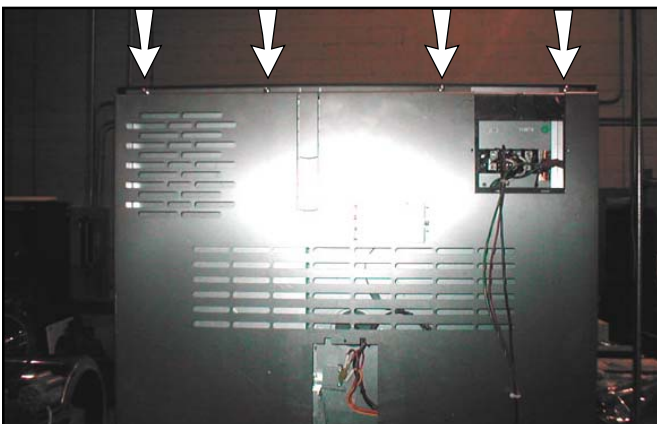
UPPER FRONT PANEL REMOVAL:

Remove the four screws located just above the top loading door. Tilt the bottom of the panel out and lift the panel up and away from the dryer.



TOP COVER REMOVAL:

First remove the back guard, the four screws holding top cover. Next pull top cover toward the rear of the dryer and lift up.



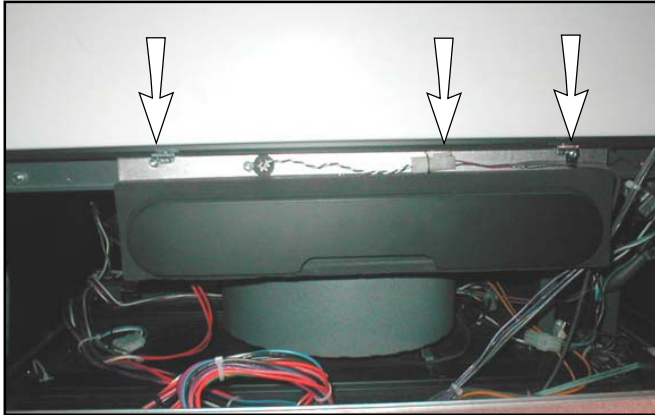
Tilt the top of the panel out, disconnect electrical connection to computer panel, lift panel and unhook support brackets.



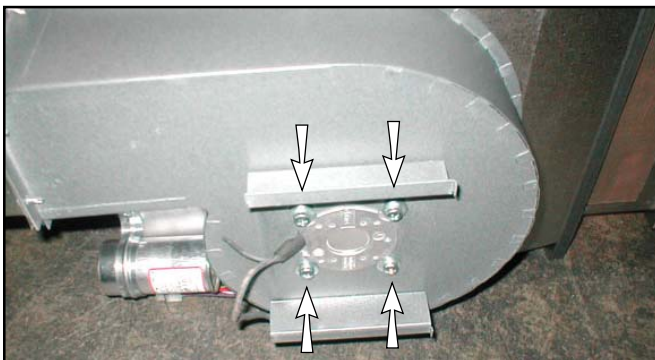
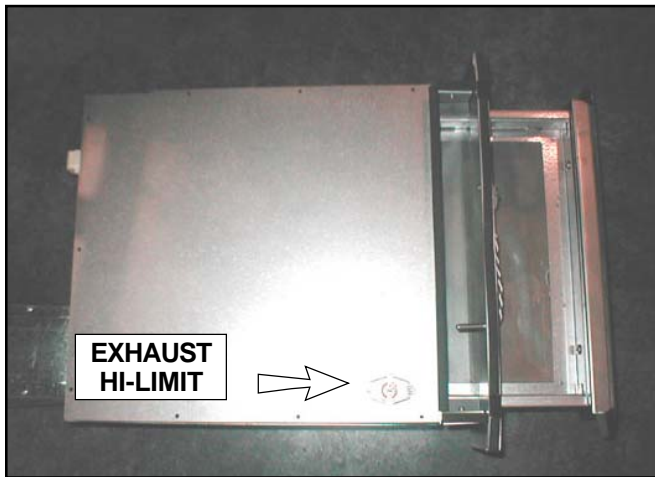
LINT BOX/BLOWER ASSEMBLY REMOVAL:

Unplug the motor harness.

Remove two screws just above the lint drawer and pull the lint box down from the front and out slightly. Unplug the exhaust temperature probe.



Unplug two connections on the exhaust hi-limit at the left of the lint box. The lint box may now be pulled out through the front of the dryer.



To remove motorized impellor assembly, remove lint housing cover, lint screen, and the four screws shown with arrows. Pull the motorized impellor assembly out through the opening.

GAS VALVE/IGNITION SYSTEM REMOVAL:

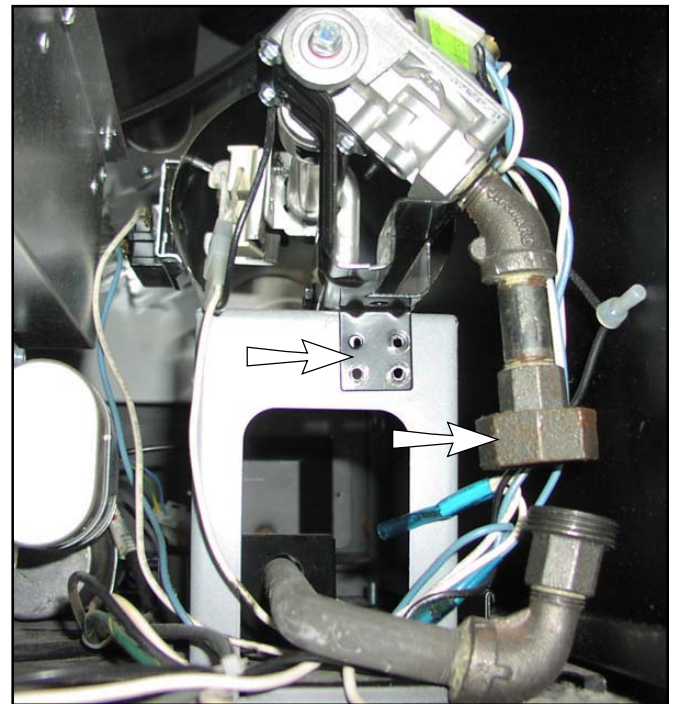
Be sure to shut off the gas main and then proceed to remove electrical connections and screws indicated. Remove lower front panel. Disconnect union and screws noted with arrows.

The gas valve and burner orifice can now be carefully pulled toward the front of the dryer.

Be sure to pull the assembly straight back so as not to strike the very fragile carbon ignitor. With the assembly partly out of the oven, the ignitor and the two gas valve electrical connections can be disconnected. At this point the assembly can be removed from the dryer.

Replace assembly in the reverse order but make sure the tab at the rear of the assembly engages into the oven base slot.

Inspect all wires to be sure all lead directly toward the front of the dryer. Be sure no wires are caught on the burner tube or ignitor.



OVEN CHAMBER REMOVAL:

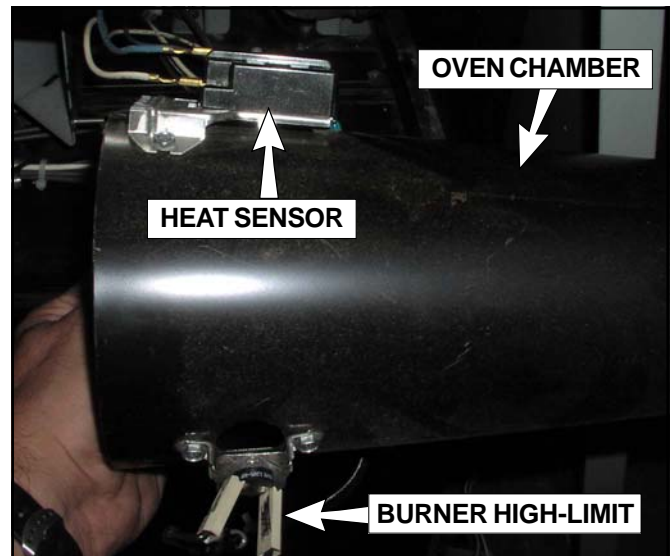
The oven chamber can be removed after the gas valve/ignition system has been removed.

Remove the two screws indicated by the arrows. Pull the oven housing part way out through the front and disconnect all wire connections. The oven housing can now be removed.

Replace assembly by leading the housing cone into the hole in the rear wall. Replace screws and wire connections.

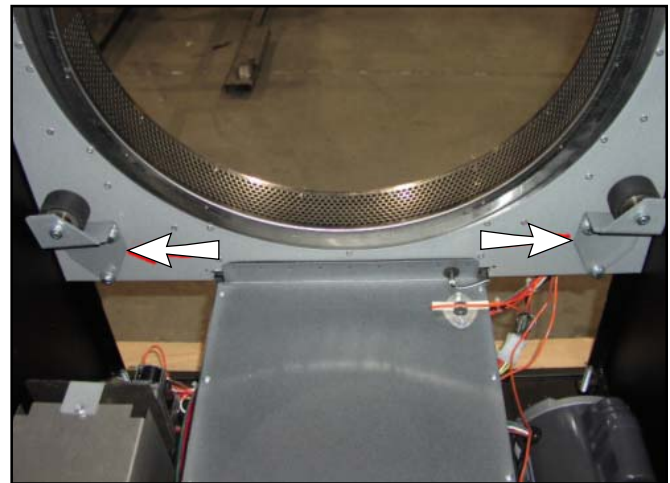


OVEN HOUSING COMPONENTS:

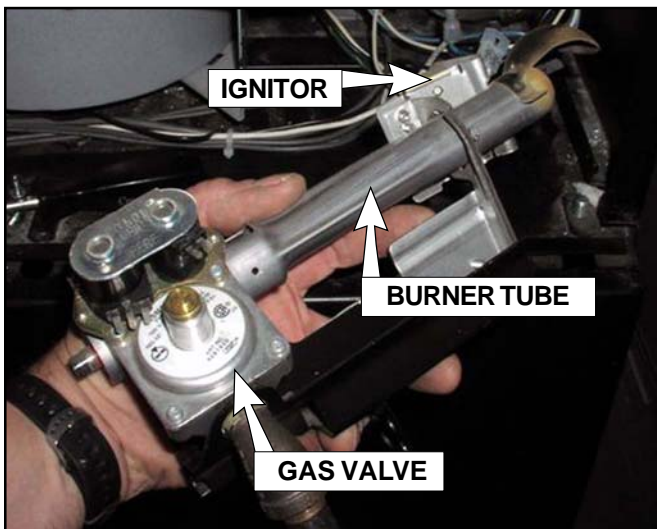


TUMBLER SUPPORT WHEEL ASSEMBLY REPLACEMENT:

The front wheel assemblies can be replaced with the lower front panel removed. Remove the three bolts by reaching upward with a socket or box wrench. The illustration below is provided to show the location of these wheels as the wheels cannot easily be seen while standing in front of the dryer.

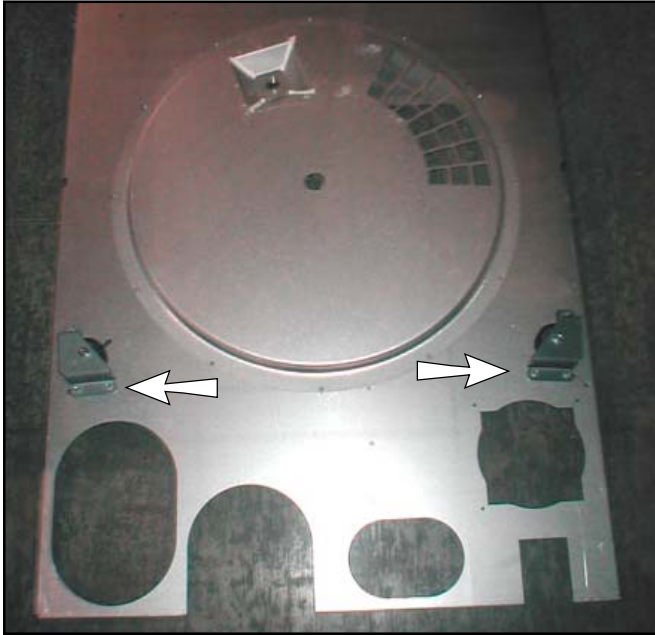


GAS VALVE/IGNITION SYSTEM COMPONENTS:



The left rear wheel assembly can be removed with just the back guard removed. The rear right wheel requires removing the back guard, heat duct, and oven. Be sure to mark the position of rear wheel brackets prior to removal (refer to **page 7**).

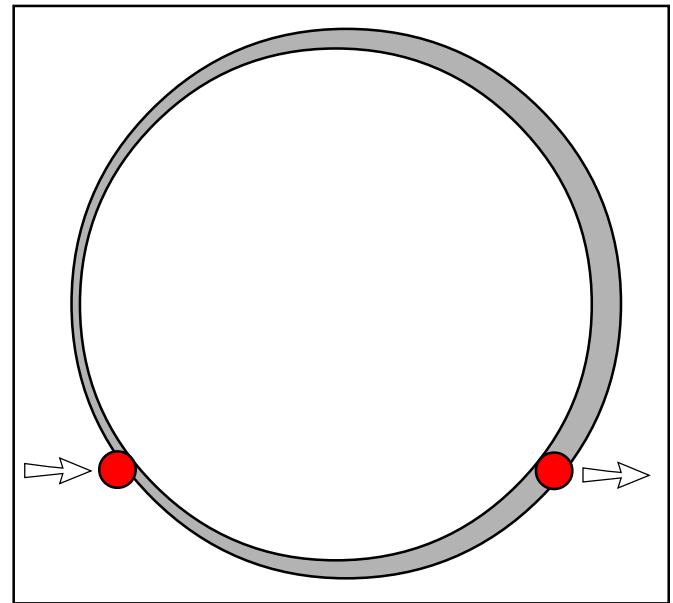
All wheel assemblies are mounted on slots to allow for alignment of the tumbler. After one or more wheel assemblies are replaced, the tumbler must be realigned.



Adjust the tumbler position by loosening the three bolts and forcing the wheel assembly toward the center of the dryer to raise the tumbler and to move it away from the side. A large screwdriver can provide the necessary leverage. Adjustment of the front of the tumbler is made by equalizing the gap on the top, bottom, left and right by moving the wheel assemblies.

EXAMPLES:

Below, both wheel assemblies must be moved to the right in order to move the tumbler right. The left wheel assembly must move a little more than the right in order to lift the tumbler.



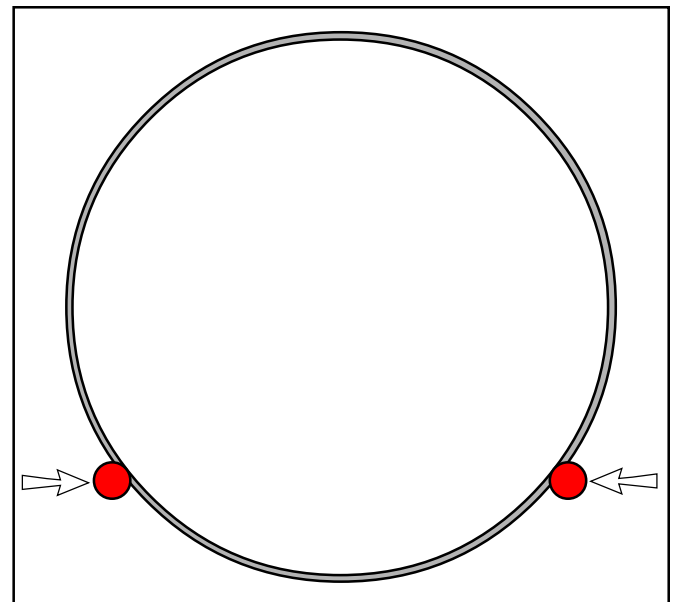
TUMBLER ALIGNMENT:

Proper alignment is achieved by making the gap between the tumbler and openings in the front and rear bulkheads equal on all sides.

The front to bulkhead may be checked for accuracy by using a thickness gauge. The rear gap is not accessible. Marking the position of the rear wheel brackets before removing the brackets will help in replacing the tumbler back into it's original position when the wheel brackets are reinstalled.

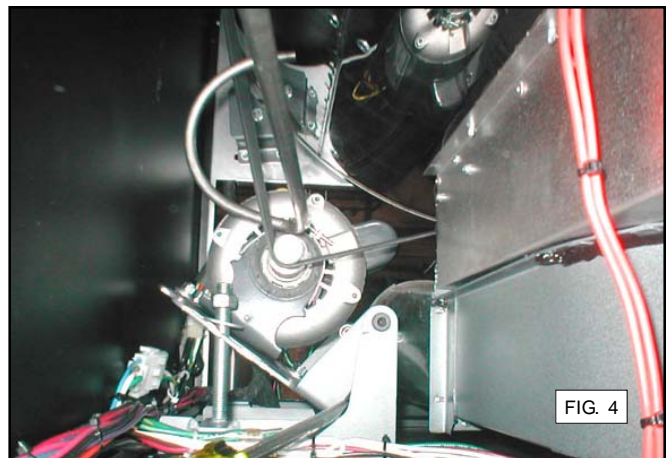
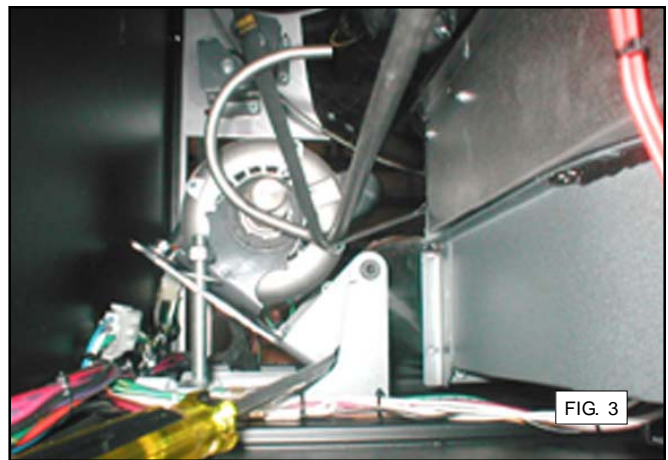
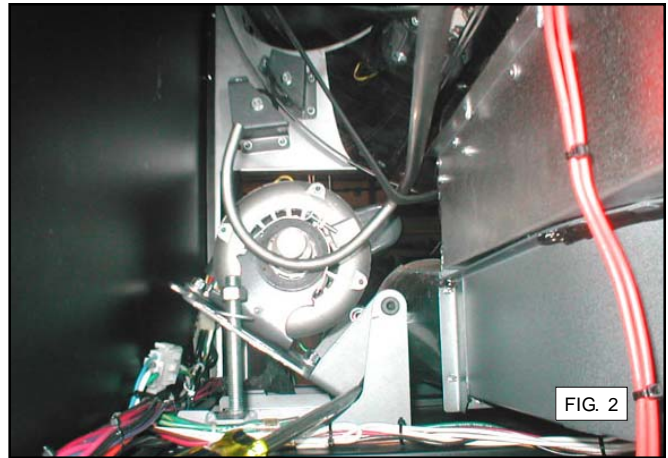
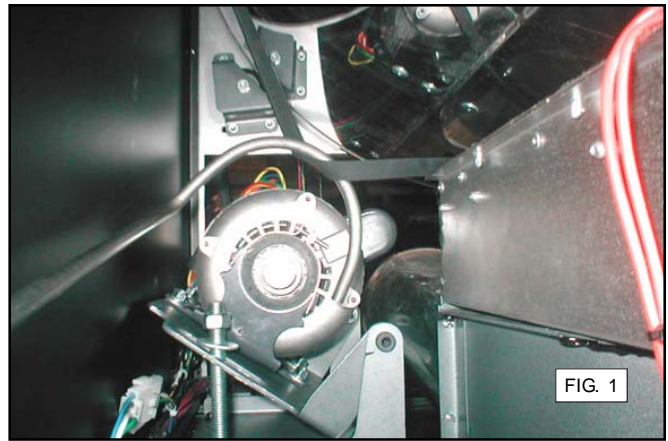


Below, both wheel assemblies are adjusted correct and spacing is even on all sides.



BELT REPLACEMENT:

Shut off electrical power to the dryer. Lockout and tag out supply voltages. Follow the steps to remove front middle panel. Next you will remove either the front bottom or front upper panel, depending on pocket you are working on. Remove the belt from the motor sheave. Next, remove the two screws fastening the lint coupe to the front panel. Remove the front panel screws, while holding up the basket. Tilt the top of the front panel forward. Take note of position of motor adjustment nut spin counterclockwise to loosen tension. The old belt can now be removed. Slide the new belt around basket and push belt to a position close the motor sheave.



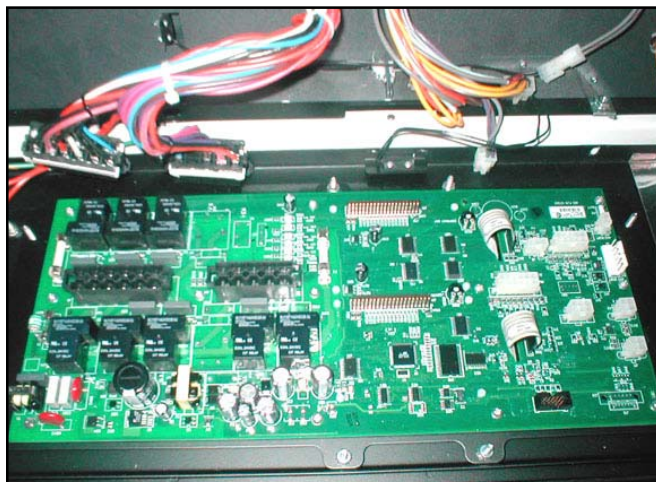
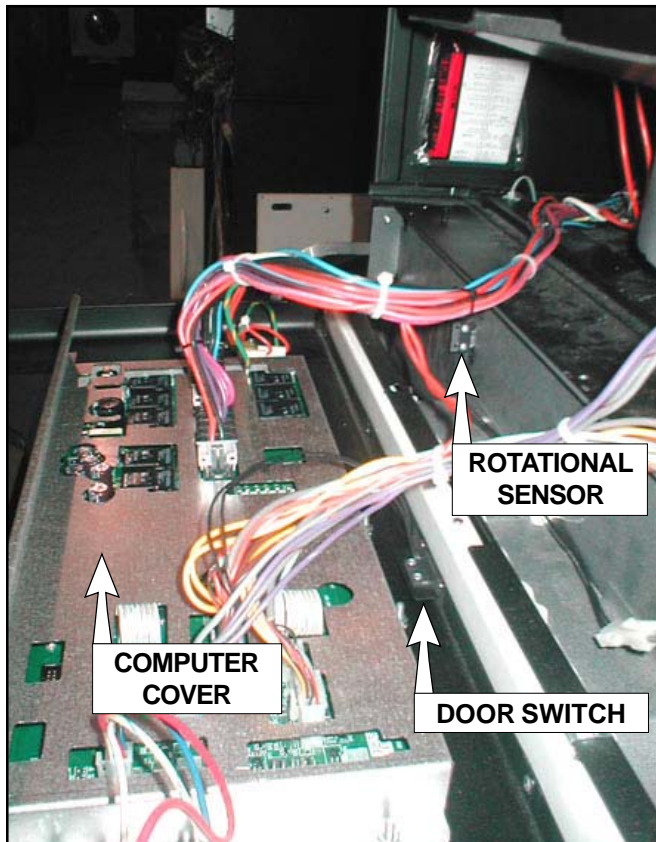
PLACING THE BELT BACK ON THE MOTOR SHEAVE:

Place belt installation tool (BIT) P/N 320650, over belt (Fig. 1) and rotate in a clockwise direction. While rotating run BIT under motor sheave (Fig. 2). Continue to spin BIT, belt will then wrap under motor sheave (Fig. 3). Remove BIT from dryer (Fig. 4). Next, you want to rotate basket slowly to ensure it is on the sheave completely. Tighten the motor adjustment nut to position previous set.

Electrical Component Locations

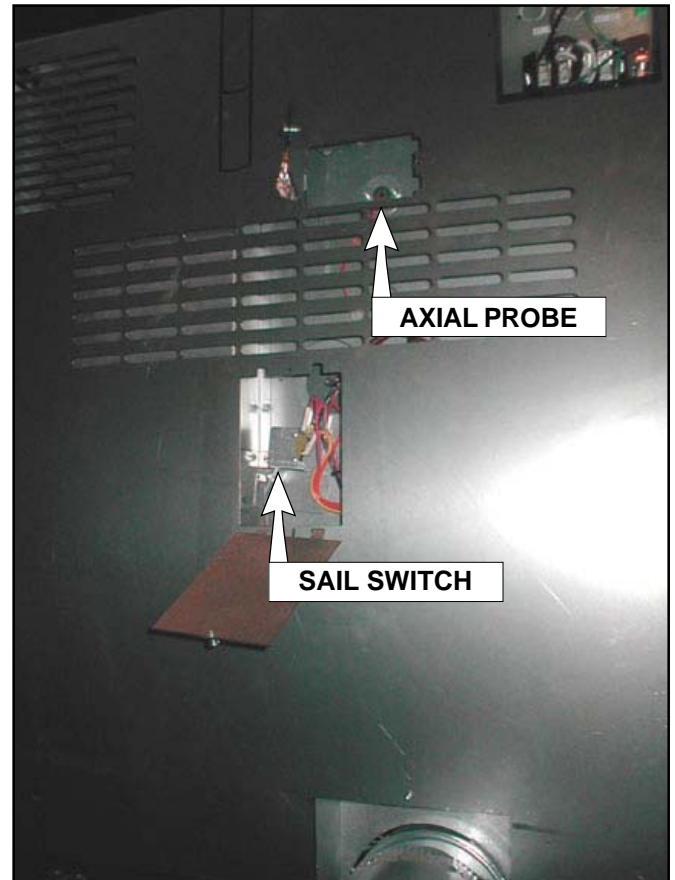
ELECTRICAL PANEL:

The electrical panel is located behind the front middle panel.



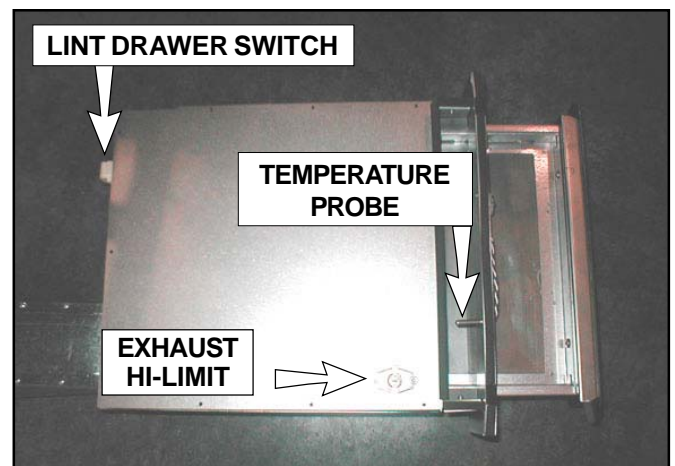
SAIL SWITCH AND AXIAL PROBE ASSEMBLY:

Located behind back guard. Access doors are provided. Back guard does not have to be removed.



EXHAUST PROBE, EXHAUST HI-LIMIT, AND LINT DRAWER SWITCH:

Temperature probe and exhaust hi-limit are accessible without the lint box being removed. The lint drawer switch can be removed after the lint box is and the cover has been removed.





Free Manuals Download Website

<http://myh66.com>

<http://usermanuals.us>

<http://www.somanuals.com>

<http://www.4manuals.cc>

<http://www.manual-lib.com>

<http://www.404manual.com>

<http://www.luxmanual.com>

<http://aubethermostatmanual.com>

Golf course search by state

<http://golfingnear.com>

Email search by domain

<http://emailbydomain.com>

Auto manuals search

<http://auto.somanuals.com>

TV manuals search

<http://tv.somanuals.com>