

# **DNS-3200**

**3U Dual Intel® Xeon™ Storage  
Server with 15 SATA Channels**

## **User's Manual**

## **Copyright**

The documentation and the software included with this product are copyrighted 2005 by Advantech Co., Ltd. All rights are reserved. Advantech Co., Ltd. reserves the right to make improvements in the products described in this manual at any time without notice. No part of this manual may be reproduced, copied, translated or transmitted in any form or by any means without the prior written permission of Advantech Co., Ltd. Information provided in this manual is intended to be accurate and reliable. However, Advantech Co., Ltd. assumes no responsibility for its use, nor for any infringements of the rights of third parties, which may result from its use.

## **Acknowledgements**

Intel and Pentium are trademarks of Intel Corporation.

Microsoft Windows and MS-DOS are registered trademarks of Microsoft Corp.

All other product names or trademarks are properties of their respective owners.

Part No. 2002320010

1st Edition

Printed in Taiwan

August 2005

## **Product Warranty (3 years)**

Advantech warrants to you, the original purchaser, that each of its products will be free from defects in materials and workmanship for three years from the date of purchase.

This warranty does not apply to any products which have been repaired or altered by persons other than repair personnel authorized by Advantech, or which have been subject to misuse, abuse, accident or improper installation. Advantech assumes no liability under the terms of this warranty as a consequence of such events.

Because of Advantech's high quality-control standards and rigorous testing, most of our customers never need to use our repair service. If an Advantech product is defective, it will be repaired or replaced at no charge during the warranty period. For out-of-warranty repairs, you will be billed according to the cost of replacement materials, service time and freight. Please consult your dealer for more details.

If you think you have a defective product, follow these steps:

1. Collect all the information about the problem encountered. (For example, CPU speed, Advantech products used, other hardware and software used, etc.) Note anything abnormal and list any onscreen messages you get when the problem occurs.
2. Call your dealer and describe the problem. Please have your manual, product, and any helpful information readily available.
3. If your product is diagnosed as defective, obtain an RMA (return merchandise authorization) number from your dealer. This allows us to process your return more quickly.
4. Carefully pack the defective product, a fully-completed Repair and Replacement Order Card and a photocopy proof of purchase date (such as your sales receipt) in a shippable container. A product returned without proof of the purchase date is not eligible for warranty service.
5. Write the RMA number visibly on the outside of the package and ship it prepaid to your dealer.

## **Declaration of Conformity**

### **CE**

This product has passed the CE test for environmental specifications when shielded cables are used for external wiring. We recommend the use of shielded cables. This kind of cable is available from Advantech. Please contact your local supplier for ordering information.

### **CE**

This product has passed the CE test for environmental specifications. Test conditions for passing included the equipment being operated within an industrial enclosure. In order to protect the product from being damaged by ESD (Electrostatic Discharge) and EMI leakage, we strongly recommend the use of CE-compliant industrial enclosure products.

### **FCC Class A**

Note: This equipment has been tested and found to comply with the limits for a Class A digital device, pursuant to part 15 of the FCC Rules. These limits are designed to provide reasonable protection against harmful interference when the equipment is operated in a commercial environment. This equipment generates, uses, and can radiate radio frequency energy and, if not installed and used in accordance with the instruction manual, may cause harmful interference to radio communications. Operation of this equipment in a residential area is likely to cause harmful interference in which case the user will be required to correct the interference at his own expense.

## **FCC Class B**

This equipment has been tested and found to comply with the limits for a Class B digital device, pursuant to part 15 of the FCC Rules. These limits are designed to provide reasonable protection against harmful interference in a residential installation. This equipment generates, uses and can radiate radio frequency energy and, if not installed and used in accordance with the instructions, may cause harmful interference to radio communications. However, there is no guarantee that interference will not occur in a particular installation. If this equipment does cause harmful interference to radio or television reception, which can be determined by turning the equipment off and on, the user is encouraged to try to correct the interference by one or more of the following measures:

- Reorient or relocate the receiving antenna.
- Increase the separation between the equipment and receiver.
- Connect the equipment into an outlet on a circuit different from that to which the receiver is connected.
- Consult the dealer or an experienced radio/TV technician for help.

## **Technical Support and Assistance**

1. Visit the Advantech web site at **[www.advantech.com/support](http://www.advantech.com/support)** where you can find the latest information about the product.
2. Contact your distributor, sales representative, or Advantech's customer service center for technical support if you need additional assistance. Please have the following information ready before you call:
  - Product name and serial number
  - Description of your peripheral attachments
  - Description of your software (operating system, version, application software, etc.)
  - A complete description of the problem
  - The exact wording of any error messages

## **Document Feedback**

To assist us in making improvements to this manual, we would welcome comments and constructive criticism. Please send all such comments in writing to: [support@advantech.com](mailto:support@advantech.com)

## **Unpacking Your ADVANTECH DNS-3200**

Before removing your ADVANTECH DNS-3200 from the shipping carton, you should thoroughly inspect the physical condition of the container. The package of the ADVANTECH DNS-3200 should appear in good condition when you receive it. If any excessive damage is found, do not remove the components. Contact the place of purchase for further instructions.

If the shipping container appears to be in good condition, unpack it and verify that the ADVANTECH DNS-3200 and accessories are all there and in good condition.

## **Packing List**

Your ADVANTECH DNS-3200 package should contain the following items:

- 3 x AC Power Cords
- 1 x Set HDD Screws
- 1 x Wrench
- 2 x Sets Rack Rail Assembly
- 2 x Front Brackets for Mounting Rack Rail
- 2 x Rear Brackets for Mounting Rack Rail
- 1 x Set Mounting Screws
- 1 x DNS-3200 unit

If an item is missing or damaged, please contact the place of purchase for assistance. Retain the shipping container and packing material for reuse.

## **Safety Instructions**

1. Read these safety instructions carefully.
2. Keep this User's Manual for later reference.
3. Disconnect this equipment from any AC outlet before cleaning. Use a damp cloth. Do not use liquid or spray detergents for cleaning.
4. For plug-in equipment, the power outlet socket must be located near the equipment and must be easily accessible.
5. Keep this equipment away from humidity.
6. Put this equipment on a reliable surface during installation. Dropping it or letting it fall may cause damage.
7. The openings on the enclosure are for air convection. Protect the equipment from overheating. **DO NOT COVER THE OPENINGS.**
8. Make sure the voltage of the power source is correct before connecting the equipment to the power outlet.
9. Position the power cord so that people cannot step on it. Do not place anything over the power cord.
10. All cautions and warnings on the equipment should be noted.
11. If the equipment is not used for a long time, disconnect it from the power source to avoid damage by transient overvoltage.
12. Never pour any liquid into an opening. This may cause fire or electrical shock.
13. Never open the equipment. For safety reasons, the equipment should be opened only by qualified service personnel.
14. If one of the following situations arises, get the equipment checked by service personnel:
  - a. The power cord or plug is damaged.
  - b. Liquid has penetrated into the equipment.
  - c. The equipment has been exposed to moisture.
  - d. The equipment does not work well, or you cannot get it to work according to the user's manual.
  - e. The equipment has been dropped and damaged.
  - f. The equipment has obvious signs of breakage.
15. **DO NOT LEAVE THIS EQUIPMENT IN AN ENVIRONMENT WHERE THE STORAGE TEMPERATURE MAY GO BELOW -**

20° C (-4° F) OR ABOVE 60° C (140° F). THIS COULD DAMAGE THE EQUIPMENT. THE EQUIPMENT SHOULD BE IN A CONTROLLED ENVIRONMENT.

16. CAUTION: DANGER OF EXPLOSION IF BATTERY IS INCORRECTLY REPLACED. REPLACE ONLY WITH THE SAME OR EQUIVALENT TYPE RECOMMENDED BY THE MANUFACTURER, DISCARD USED BATTERIES ACCORDING TO THE MANUFACTURER'S INSTRUCTIONS.

The sound pressure level at the operator's position according to IEC 704-1:1982 is no more than 70 dB (A).

DISCLAIMER: This set of instructions is given according to IEC 704-1. Advantech disclaims all responsibility for the accuracy of any statements contained herein.

### **Wichtige Sicherheitshinweise**

1. Bitte lesen sie Sich diese Hinweise sorgfältig durch.
2. Heben Sie diese Anleitung für den späteren Gebrauch auf.
3. Vor jedem Reinigen ist das Gerät vom Stromnetz zu trennen. Verwenden Sie Keine Flüssig-oder Aerosolreiniger. Am besten dient ein angefeuchtetes Tuch zur Reinigung.
4. Die Netzanschlussteckdose soll nahe dem Gerät angebracht und leicht zugänglich sein.
5. Das Gerät ist vor Feuchtigkeit zu schützen.
6. Bei der Aufstellung des Gerätes ist auf sicheren Stand zu achten. Ein Kippen oder Fallen könnte Verletzungen hervorrufen.
7. Die Belüftungsöffnungen dienen zur Luftzirkulation die das Gerät vor überhitzung schützt. Sorgen Sie dafür, daß diese Öffnungen nicht abgedeckt werden.
8. Beachten Sie beim. Anschluß an das Stromnetz die AnschluBwerte.
9. Verlegen Sie die Netzanschlusbleitung so, daß niemand darüber fallen kann. Es sollte auch nichts auf der Leitung abgestellt werden.
10. Alle Hinweise und Warnungen die sich am Geräten befinden sind zu beachten.



11. Wird das Gerät über einen längeren Zeitraum nicht benutzt, sollten Sie es vom Stromnetz trennen. Somit wird im Falle einer Überspannung eine Beschädigung vermieden.
12. Durch die Lüftungsöffnungen dürfen niemals Gegenstände oder Flüssigkeiten in das Gerät gelangen. Dies könnte einen Brand bzw. elektrischen Schlag auslösen.
13. Öffnen Sie niemals das Gerät. Das Gerät darf aus Gründen der elektrischen Sicherheit nur von autorisiertem Servicepersonal geöffnet werden.
14. Wenn folgende Situationen auftreten ist das Gerät vom Stromnetz zu trennen und von einer qualifizierten Servicestelle zu überprüfen:
  - a - Netzkabel oder Netzstecker sind beschädigt.
  - b - Flüssigkeit ist in das Gerät eingedrungen.
  - c - Das Gerät war Feuchtigkeit ausgesetzt.
  - d - Wenn das Gerät nicht der Bedienungsanleitung entsprechend funktioniert oder Sie mit Hilfe dieser Anleitung keine Verbesserung erzielen.
  - e - Das Gerät ist gefallen und/oder das Gehäuse ist beschädigt.
  - f - Wenn das Gerät deutliche Anzeichen eines Defektes aufweist.
15. **VORSICHT:** Explosionsgefahr bei unsachgemäßen Austausch der Batterie. Ersatz nur durch denselben oder einem vom Hersteller empfohlene-mähnlichen Typ. Entsorgung gebrauchter Batterien nach Angaben des Herstellers.
16. **ACHTUNG:** Es besteht die Explosionsgefahr, falls die Batterie auf nicht fach-männische Weise gewechselt wird. Verfangen Sie die Batterie nur gleicher oder entsprechender Type, wie vom Hersteller empfohlen. Entsorgen Sie Batterien nach Anweisung des Herstellers.

Der arbeitsplatzbezogene Schalldruckpegel nach DIN 45 635 Teil 1000 beträgt 70 dB(A) oder weniger.

Haftungsausschluss: Die Bedienungsanleitungen wurden entsprechend der IEC-704-1 erstellt. Advantech lehnt jegliche Verantwortung für die Richtigkeit der in diesem Zusammenhang getätigten Aussagen ab.

## Safety Precaution - Static Electricity

Follow these simple precautions to protect yourself from harm and the products from damage.

1. To avoid electrical shock, always disconnect the power from your PC chassis before you work on it. Don't touch any components on the CPU card or other cards while the PC is on.
2. Disconnect power before making any configuration changes. The sudden rush of power as you connect a jumper or install a card may damage sensitive electronic components.

## Safety Information and Technical Specifications

### Electrical Safety Guidelines

**Warning!** *To avoid electrical shock, check the power cords as follows:*



### Checking the Power Cords

- Use the exact type of power cords as required.
- Be sure to use power cord(s) that came with safety certifications.
- The power cord(s) must be compliant with the AC voltage requirements in your region.
- The power cord plug cap must have an electrical current rating that is at least 125% of the electrical current rating of this product.
- The power cord plug cap that plugs into the AC receptacle on the power supply must be an IEC 320, sheet C13, type female connector.
- Be sure to disconnect the power supply before accessing the DNS series or its components.
- Plug the Power cord(s) into a socket that is properly grounded before turning on the power.

## General Electrical Safety Guidelines

**Warning!** *Follow the guidelines below to avoid possible damages to the system or injury to yourself:*



- Be aware of the locations of the power switches on the chassis and in the room, so you can disconnect the power supply if an accident occurs.
- Take extra precautionary measures when working with high voltage components. It is not recommended to work alone.
- Before removing or installing main system components, be sure to disconnect the power first. Turn off the system before you disconnect the PS.
- Use only one hand when working with powered-on electrical equipment to avoid possible electrical shock.
- Use rubber mats specifically designed as electrical insulators when working with computer systems.
- The power supply or power cord must include a grounding plug and must be plugged into grounded outlets.
- Motherboard Battery: CAUTION - Make sure not to install the onboard battery upside down to avoid possible explosion. Make sure that the positive side should be facing up on the motherboard. This battery must be replaced only with the same or an equivalent type recommended by the manufacturer. Dispose of used batteries according to the manufacturer's instructions.
- CD-ROM Laser: CAUTION - Do not open the enclosures of power supplies or CD-ROM to avoid injury.

## General Safety Guidelines

**Warning!** *Follow these rules to ensure general safety:*



- Keep the area around the DNS series clean and free of clutter.
- To avoid injuries to the back, be sure to use your leg muscles, keep your back straight, and bend your knees, when lifting the system.
- Avoid wearing loose clothing to prevent it from coming into contact with electrical circuits or being pulled into a cooling fan.
- After removing the components or chassis covers from the system, place them on a table for safeguard.
- Be sure to remove any jewelry or metal objects before working on the chassis to avoid short circuits should these objects come into contact with power circuits.
- After accessing the interior of the chassis, be sure to close the chassis with chassis covers and secure the chassis to the racks with screws.

## ESD Safety Guidelines

**Warning!** *Electrostatic Discharge (ESD) can damage electronic components. To prevent damage to your system board, it is important to handle it very carefully. The following measures are generally sufficient to protect your equipment from ESD.*



- Use a grounded wrist strap designed to prevent static discharge.
- Keep all components and printed circuit boards (PCBs) in their anti-static bags until ready for use.
- Touch a grounded metal object before removing the board from the antistatic bag.
- Do not let components or PCBs come into contact with your clothing, which may retain a charge even if you are wearing a wrist strap.
- Touch a grounded metal object before removing the board from the antistatic bag.
- Handle a board by its edges only; do not touch its components, peripheral chips, memory modules or contacts.
- When handling chips or modules, avoid touching their pins.
- Put the motherboard and peripherals back into their antistatic bags when not in use.
- For grounding purposes, make sure your computer chassis provides excellent conductivity between the power supply, the case, the mounting fasteners and the motherboard.

## Operation Safety Guidelines

**Warning!** *For proper cooling, make sure to install all chassis covers before turning on the system. If this rule is not strictly followed, warranty may become void. Do not open the casing of a power supply. Power supplies can only be accessed and serviced by a qualified technician of the manufacturer.*



**Warning!** *To avoid personal injury and property damage, please carefully follow all the safety steps listed below:*



### Before accessing the chassis:

1. Turn off all peripheral devices connected to the DNS series.
2. Press the power button to power off the system.
3. Unplug all power cords from the system or the wall outlets.
4. Disconnect all the cables and label the cables for easy identification.
5. Use a grounded wrist strap designed to prevent static discharge when handling components.

### Removing the chassis covers:

After completing the above steps, you can remove the covers and install components/peripheral devices into the chassis as described in Chapter 2.

1. Unlock and remove the screws and fasteners to remove the cover or components.
2. Save all the screws and fasteners for later use. (If necessary, label these screws or fasteners for easy identification.)
3. Follow the instructions given in Chapter 3 to remove the chassis covers.

### **Reinstalling the chassis covers:**

To maintain proper system cooling and airflow, do not operate the system without installing all chassis covers back to the chassis. To reinstall the chassis covers, please follow the steps listed below:

1. Make sure that all components and devices are securely fastened on the chassis and there are no loose parts/screws inside the chassis.
2. Make sure that all cables are properly connected to the connectors and ports.
3. Use the original screws or fasteners to install the covers to the chassis.
4. Be sure to lock the chassis or the system to prevent unauthorized access.
5. For proper cooling, enclose the chassis with covers before operating the system.

### **Before installing the chassis into a rack:**

1. Make sure that the rack is securely anchored onto an unmovable surface or structure before installing the chassis into the rack.
2. Unplug the power cord(s) of the rack before installing the chassis into the rack.
3. Make sure that the system is adequately supported. Make sure that all the components are securely fastened to the chassis to prevent components falling off from the chassis.
4. Be sure to install an AC Power Disconnect for the entire rack assembly and this Power Disconnect must be clearly marked.
5. The rack assembly shall be properly grounded to avoid electric shock.
6. The rack assembly must provide sufficient airflow to the chassis for proper cooling.

### **Product Compliance Information**

The DNS series Chassis is compliant with the following safety standards/requirements:

### **Product Safety**

\*Canada/USA--UL60 950-CSA60 950

\*European Union--EN 60 950

\*International--IEC 60 950

### **Electromagnetic Compatibility (EMC)-Emissions**

\*European Union--EN55022: 1994

\*International--CISPR 22

\*USA--Title 47 CFR, Part 15

### **Power Line Harmonics/Voltage Flicker**

\*European Union--EN61000-3-2/EN61000-3-3

\*International--IEC61000-3-2

### **Electromagnetic Compatibility-Immunity**

\*European Union--EN55024: 1998

\*International--CISPR 24



# Contents

<b>Chapter 1</b>	<b>Introduction .....</b>	<b>2</b>
1.1	About the Product.....	2
1.1.1	Hardware Features .....	2
1.1.2	Software Features .....	3
1.1.3	System Protection .....	3
1.1.4	Product Appearance .....	5
	Figure 1.1:DNS-3200 Front panel .....	5
	Figure 1.2:DNS-3200 Rear panel .....	6
1.2	Panel Indicators.....	7
<b>Chapter 2</b>	<b>Chassis Description and Installation .....</b>	<b>10</b>
2.1	Chassis Description.....	10
2.2	Chassis Installation.....	11
2.2.1	Important Safety Guidelines .....	11
2.2.2	Tools Needed .....	12
2.2.3	Accessing the SCA Drive Tray and Installing a HDD .....	12
2.2.4	Accessing the 760W Power Supply .....	13
2.2.5	Rack Installation .....	17
<b>Chapter 3</b>	<b>Configuration.....</b>	<b>24</b>
3.1	Configuration Settings.....	24
3.1.1	Turning the system on for the first time .....	24
3.1.2	WSS2003 Activation .....	29
3.1.3	Network configuration setting .....	34
<b>Chapter 4</b>	<b>Managing Arrays and Disks.....</b>	<b>40</b>
4.1	RAID Minimum Disk Requirements .....	40
	Table 4.1:Min and Max Disks for RAID levels .....	40
4.2	Understanding Array and Disk States .....	40
4.3	Starting and Stopping Tasks.....	44
4.4	Working with Spares.....	45
4.4.1	About Sparing Options .....	45
4.4.2	Using Distributed Sparing .....	46
4.4.3	Using Dedicated Sparing .....	48
4.4.4	Using Global Sparing .....	50
<b>Chapter 5</b>	<b>Using the BIOS Configuration Utility .....</b>	<b>52</b>
5.1	When to Use the BIOS Configuration Utility.....	52
5.2	Color Codes for the BIOS Array Config Utility .....	53
5.3	Initializing Disks from the BIOS .....	53
5.4	Creating Arrays from the BIOS .....	54
	Figure 5.1: Create an array .....	57
5.5	Deleting Arrays from the BIOS .....	58
5.6	Swapping Arrays from the BIOS .....	58
	Figure 5.2:Swap arrays .....	59

5.7	Hiding or Unhiding Arrays from the BIOS.....	60
5.8	Viewing Disk Details from the BIOS.....	61
5.9	Viewing Array Details from the BIOS.....	62
5.10	Rescanning All Channels from the BIOS.....	62
5.11	Changing Controller Options from the BIOS.....	63
	Figure 5.3:Change controller options.....	64
5.12	Continue Booting from the BIOS.....	65
<b>Chapter 6</b>	<b>RAID Console Operations.....</b>	<b>68</b>
6.1	RAID Console Management.....	68
6.1.1	Mirror Split.....	72
6.1.2	Online RAID Level Migration.....	74
<b>Chapter 7</b>	<b>System Maintenance.....</b>	<b>78</b>
7.1	System Protection & Repairs.....	78
7.1.1	Operating System Split.....	79
7.1.2	Operating System Swap.....	81
7.1.3	Operating System Repair.....	85
<b>Appendix A</b>	<b>Hardware Specifications.....</b>	<b>90</b>
	Table A.1:Hardware Specifications.....	90

## **Introduction**

This section introduces the DNS-3200.

This section includes:

- Hardware Features
- Software Features
- Front and rear panel views

# Chapter 1 Introduction

## 1.1 About the Product

---

This manual provides an introduction to the DNS-3200. It is one product among the DNS Series of storage devices, specially designed for file sharing with multi-platform file sharing support capabilities. Data storage in the DNS can be partitioned either as application-based or user-based, with each partition having its own security definitions. Remote access is also supported allowing the administrator to manage remotely. In addition, backup and volume management can be done through a Web browser-based GUI interface.

The DNS-3200 is available in two models:

- Model with 2 built-in U320 SCSI external ports
- Model without U320 SCSI external ports

### 1.1.1 Hardware Features

The DNS-3200 has the following standard hardware specifications:

- Intel 2.8 GHz Xeon EMT64 processor x 1
- 1 GB DDRII 400 MHz ECC Reg SDRAM memory
- 1 to 15 7200 rpm SATA hot-plug hard disks
- 2 10/100/1000 WOL Ethernet controllers

The DNS-3200 has the following optional hardware configuration:

- Optional upgraded processor
- Optional expandable memory
- Optional expandable capacity
- 2 Ultra SC320 SCSI external ports for tape device or expansion unit

### 1.1.2 Software Features

Advanced features included and supported by the DNS-3200 include:

- Windows Storage Server 2003
- Microsoft Services for Macintosh
- Microsoft Services for UNIX 3.5
- NAS Web Based User Interface (Web UI)
- Shadow Copies for shared folders (VSS)
- Persistent Storage Manager 2.0
- Optional third party supported software (not included):
  1. Backup software
  2. Management software
  3. Quota management
  4. Virus protection

### 1.1.3 System Protection

The DNS-3200 is designed for network file services and meets industrial standards, such as hardware RAID and Web interface remote management for successful upgrading and increased stability and reliability of the system.

To aid system reliability, the DNS-3200 operating system is configured with RAID 1N technology when released from the factory, where the first 10 GB of hard disk space is kept for Mirroring and the operating system is installed in that area. If several hard disks experience problems, the user may still turn on the operating system. The user may also use the Mirror Split to divide the operating system that has been installed, enabling a dual operating system mode. If the primary operating system is damaged and not available, the backup system will boot the unit for service while the damaged operating system can be repaired.

**Note:** *For details on installation of the dual operating system and repairs of the operating system, please refer to System Protection and Repairs.*

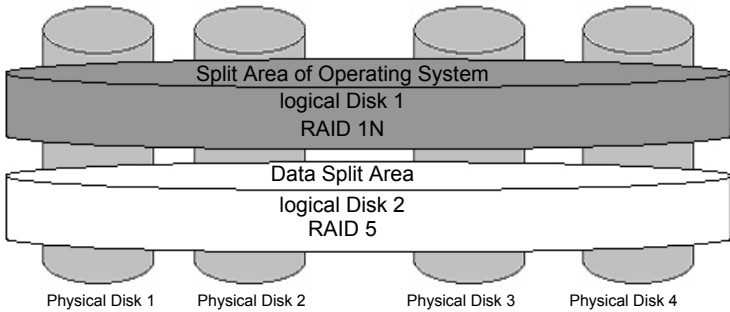
As for protection of the data split area, the DNS-3200 is available with a logical region of the hard disk excluded from the space for the operating system. The operating system uses RAID 5 technology when released

from the factory. In that mode, when a hard disk is damaged, the data remains accessible as usual.

Each and every DNS-3200 is available with a SATA hot plug hard disk when released from the factory plus 2 logically split areas. Data in the split areas are available in the following tables and figures.

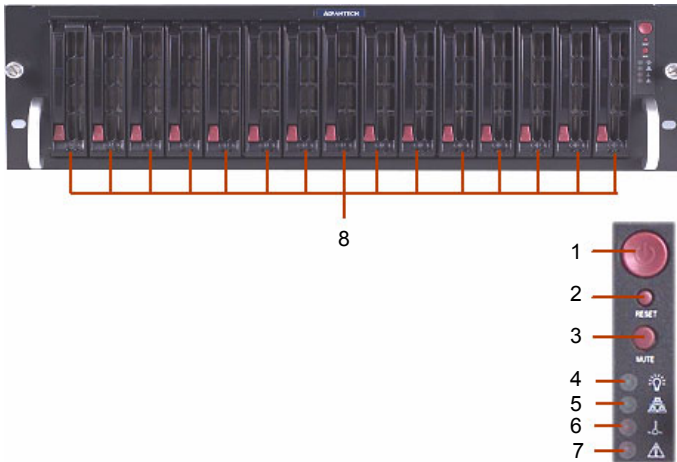
**Note:** *Default layouts may vary depending on the number of hard disks.*

Logical Disk	RAID mode	Size
1	1N	10 GB in disk 0, 1, 2 and 3
2	5	Remaining space in disk 0, 1, 2 and 3



## 1.1.4 Product Appearance

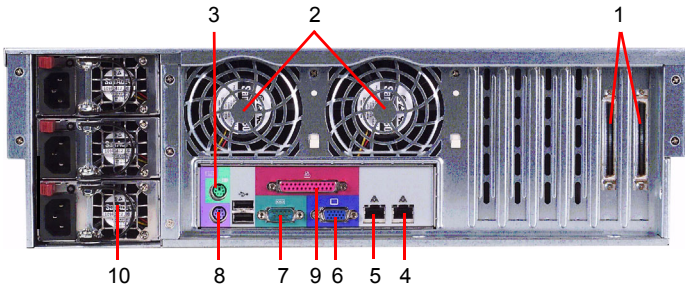
The front panel is as shown below:



*Figure 1.1: DNS-3200 Front panel*

No	Description
1	Power On/Off
2	Reset
3	Beeper silencer
4	Power indicator
5	Online active indicator
6	Temperature warning light
7	Voltage indicator
8	Independent hard disk indicators

The rear panel is as shown below:



*Figure 1.2: DNS-3200 Rear panel*

No	Description
1	Ultra320 SCSI external ports
2	Hot swap system fans
3	PS/2 mouse connector
4	RJ-45 Gigabit Ethernet port 1
5	RJ-45 Gigabit Ethernet port 2
6	Monitor output port
7	UPS port
8	PS/2 keyboard connector
9	Parallel port
10	Hot swap power module



## 1.2 Panel Indicators

---



**PWR:** The power indicator turns green permanently when pressing Power On/Off or when starting the unit.



**HDD Active:** Each and every hard disk comes with an independent HDD Active indicator. When the hard disk is being read or written to, the indicator turns green and flashes.



**Network State:** This is the indicator that shows and state of the network connection. When the port is communicating or transmitting, the indicator turns green and flashes.



**Temperature Alarm:** When the system develops abnormal temperatures, the LED indicator turns red.



**Power Fail Alarm:** When the system develops an abnormal power supply, the LED indicator turns red and the system emits an alarm. Press the beep silencer to turn the alarm off.



## **Chassis Description and Installation**

This section explains how to install the DNS-3200 chassis.

This section includes:

- Chassis Description
- Chassis Installation

# Chapter 2 Chassis Description and Installation

## 2.1 Chassis Description

---

### Contents of the Accessory Kit:

The following items are included in the Accessory Kit:

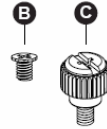
---

#### M/B



- A. Pan head w/ lock  
6-32 x 4.5 mm [0.177]

#### HDD



- B. Flat head 6-32 x 5 mm [0.197]  
C. Thumb screw 6-32 x 5 mm [0.197]

---

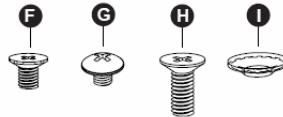
#### DRIVE



- B. Flat head 6-32 x 5 mm [0.197]  
D. Pan head 6-32 x 5 mm [0.197]  
E. Round head M3 x 5 mm [0.197]

---

#### RAIL



- F. Flat head M4 x 4 mm [0.157]  
G. Round head M4 x 4 mm [0.157]  
H. Flat head M5 x 12 mm [0.472]  
I. Washer for M5
-

## 2.2 Chassis Installation

---

### 2.2.1 Important Safety Guidelines

**Warning!** *This product shall only be accessed, assembled and serviced by technically qualified personnel or technicians.*



*To avoid personal injury and property damage, please read all the information provided in Chapter 1, and carefully follow all the Safety Guidelines listed before accessing or servicing the DNS series or its components.*

*For your convenience, some safety steps are also listed below.*

#### Safety Steps

##### Before accessing the chassis:

1. Use a grounded wrist strap designed to prevent static discharge when handling components.
2. Turn off all peripheral devices and turn off the power supply connected to the DNS series.
3. Unplug all power cords from the system or wall outlets.
4. Disconnect all the cables and label the cables for easy identification.

##### Removing the chassis covers:

After completing the above steps, you can remove the chassis covers and install components and devices into the chassis as described in this chapter.

1. Unlock and remove the screws and fasteners to remove the cover or components.
2. Save all the screws and fasteners for later use. (If necessary, label these screws or fasteners for easy identification.)
3. Follow the instructions given in this chapter to remove the chassis covers.

## 2.2.2 Tools Needed

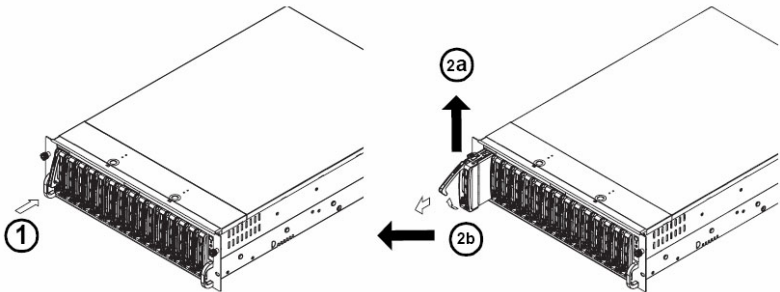
1. Phillips screw driver
2. Antistatic strap (recommended)

## 2.2.3 Accessing the SCA Drive Tray and Installing a HDD

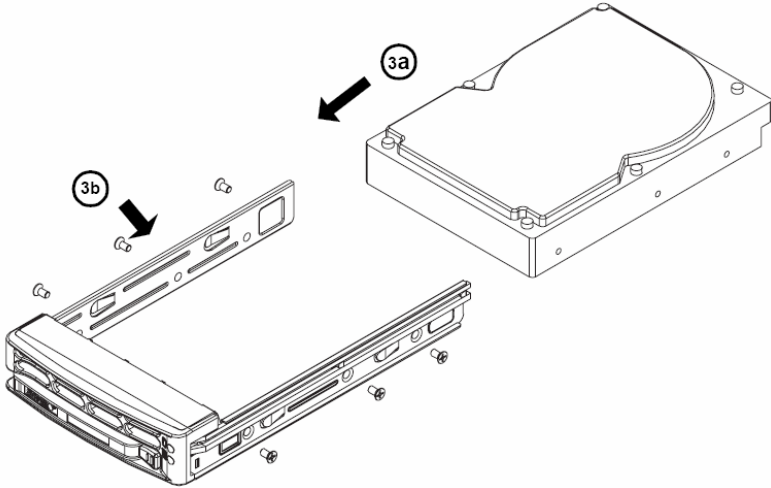
To install the SCA drive into the chassis, you need to first remove the SCA drive tray from the chassis.

### Procedures

1. Press the release tab located on the drive tray door to release the drive tray from its locked position as shown below.
2. Pull the drive tray door upward and then pull the SCA drive tray out from the chassis.



3. Mount a hard drive in the drive tray and make sure that all the screws are securely fastened.



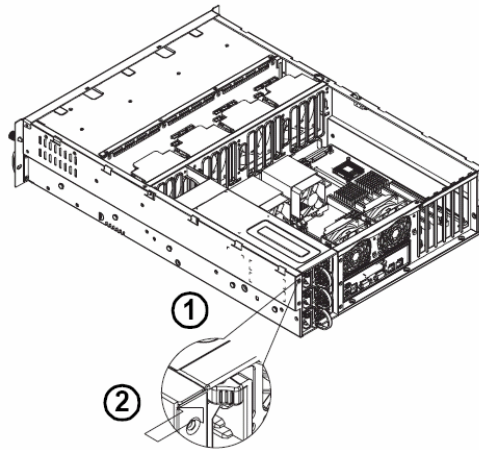
## 2.2.4 Accessing the 760W Power Supply

(\*For Triple Redundant Power Supply- 3 x PWS-0050M)

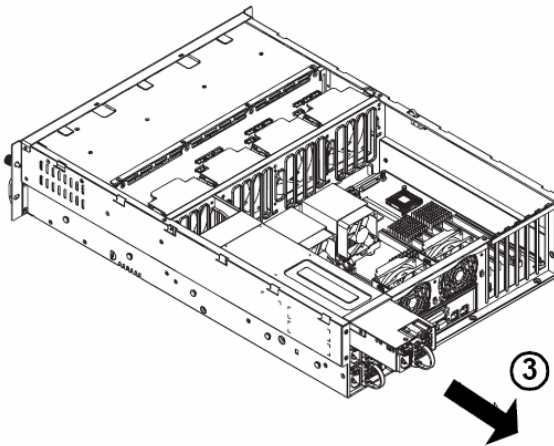
**Caution:** *Unplug the power cord before removing the power supply.*

### Procedure

1. Locate the release tab on the left side of the power supply.
2. Push the release tab to the right to release the power supply from its locked position as shown below.



3. Once the power supply module is released from its locked position, remove it from the chassis.





Please make sure the chassis covers and chassis rails are installed on the chassis before you install the chassis into the rack.

**Warning!** *To avoid personal injury and property damage, please carefully follow all the safety steps listed below.*

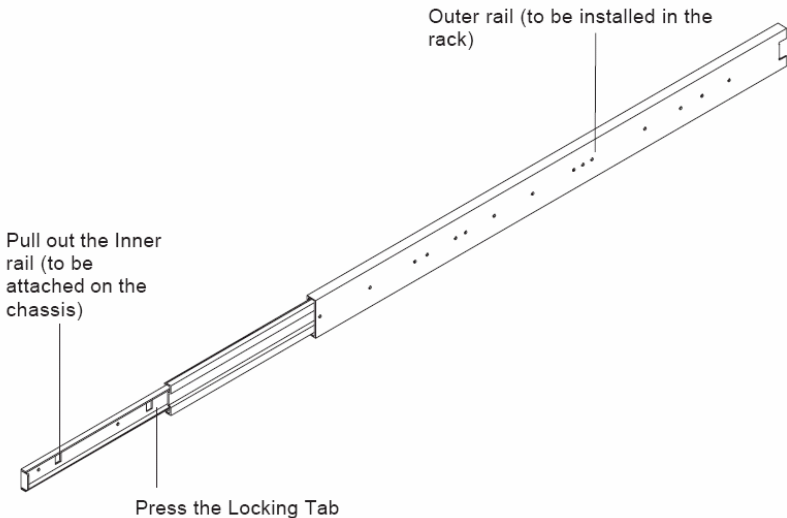


### **Before installing the Chassis rails:**

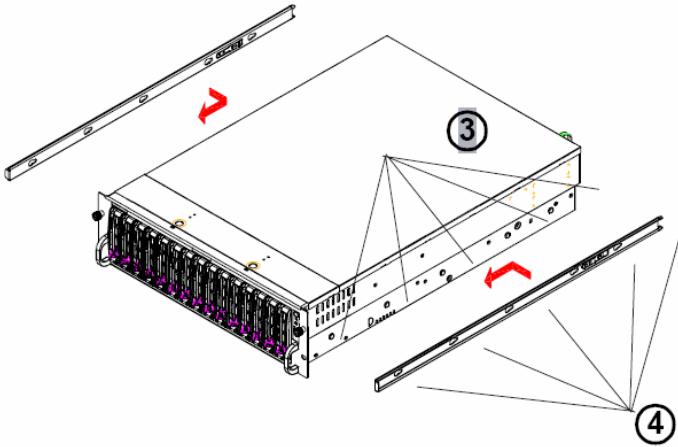
1. Enclose the chassis with chassis covers.
2. Unplug the AC power cord(s).
3. Remove all external devices and connectors.

### **Procedure for Installing Chassis Rails**

1. A pair of rail assemblies are included in the shipping package. For each rail assembly, locate the inner rail and the outer rail.
2. Press the locking tab to release the inner rail from its locked position and pull out the inner rail from the rail assembly.



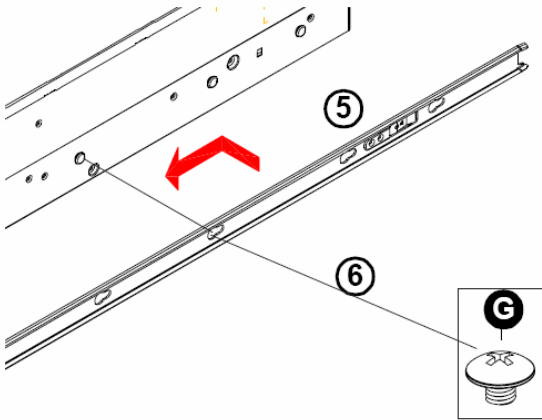
3. Locate the five rail hooks on each side of the chassis and locate the five corresponding holes on each inner rail.



**Note:** *The inner rails are to be attached to the chassis and the outer rails are to be installed in the rack.*

4. Align the end with the larger holes against the corresponding hooks. Once all holes are aligned, push the holes toward their corresponding hooks until the rail is placed on the chassis.
5. Once the rail is placed on the chassis, pull the rail forward until the rail hooks lock in the end with the smaller holes.

- Secure the rail to the chassis with a Type G screw (Refer to the figure given below). Repeat the above steps to install the other rail on the chassis.



## 2.2.5 Rack Installation

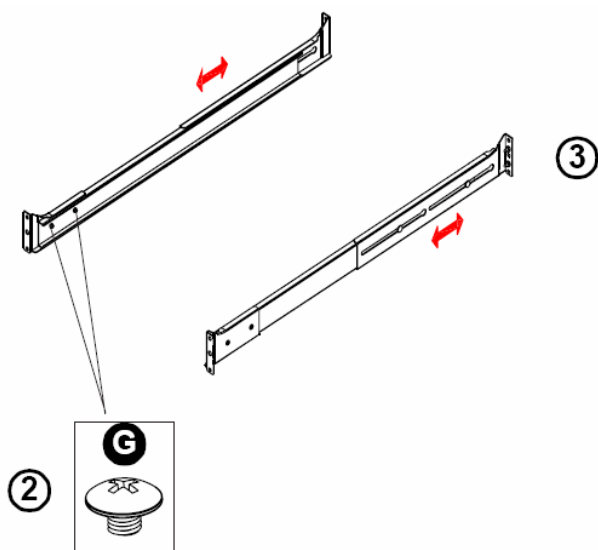
After you have installed the inner rails on the chassis, you are ready to install the outer rails of the rail assemblies in the rack.

**Note:** *The rails are designed to fit in racks with a depth of 28" to 33".*

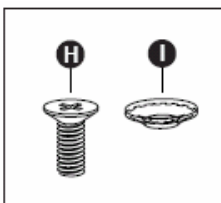
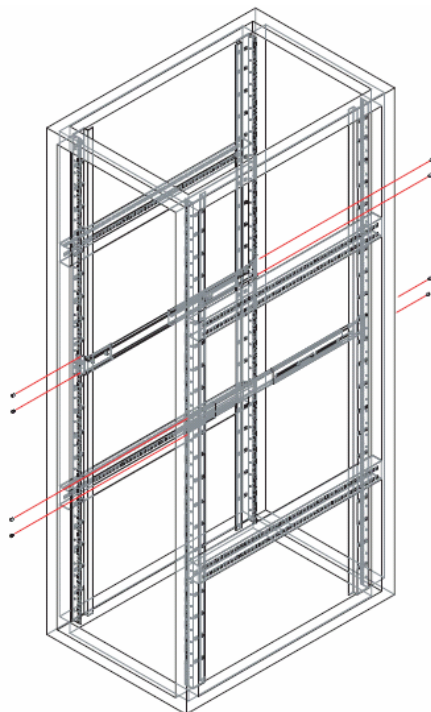
### Procedure

- In the package, locate the pair of front brackets (short) and rear brackets (long). Please note that the brackets are marked with Up/Front Arrows (front) and Up/Rear arrows (rear).
- Secure the front (short) bracket (marked with the Up/Front arrows) to the outer rail with two type G screws.
- Locate the two hooks on the outer rail and attach the rear (long) bracket to it by sliding the opening of the rear rail through the hook.
- Measure the depth of your rack and adjust the length of the rails accordingly.

5. Repeat the same steps to install the other outer rail on the chassis.

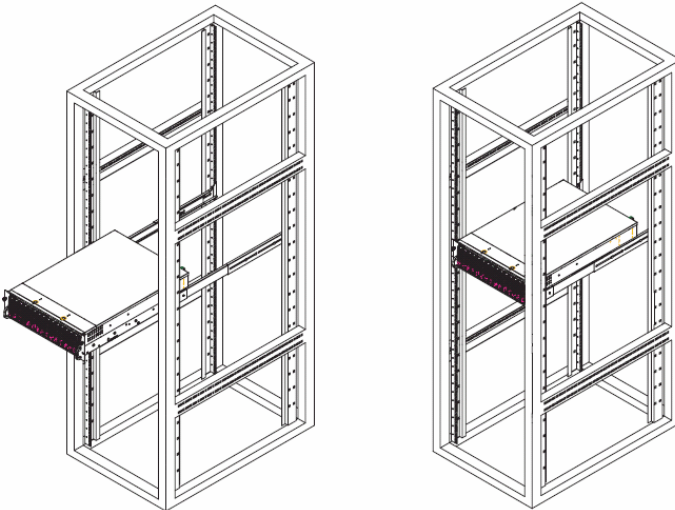


- Secure both outer rail assemblies to the rack with type H screws and type I washers.

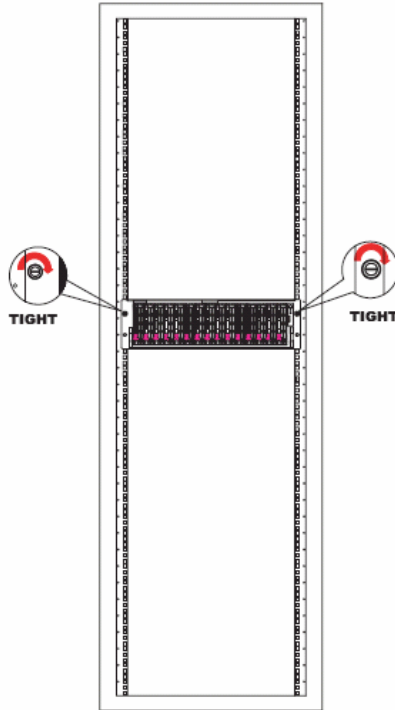


7. Once the rail assemblies are securely installed on the rack, slide the DNS series into the assemblies as shown below.

**Note:** *The DNS series may not slide into the rack smoothly or easily when installed the first time. Some adjustment to the slide assemblies might be needed.*



8. Secure the DNS Series in the rack by tightening the screws on the front sides as shown below.







## **Configuration**

This section explains how to install the DNS-3200 chassis.

This section includes:

- Configuration Settings

# Chapter 3 Configuration

## 3.1 Configuration Settings

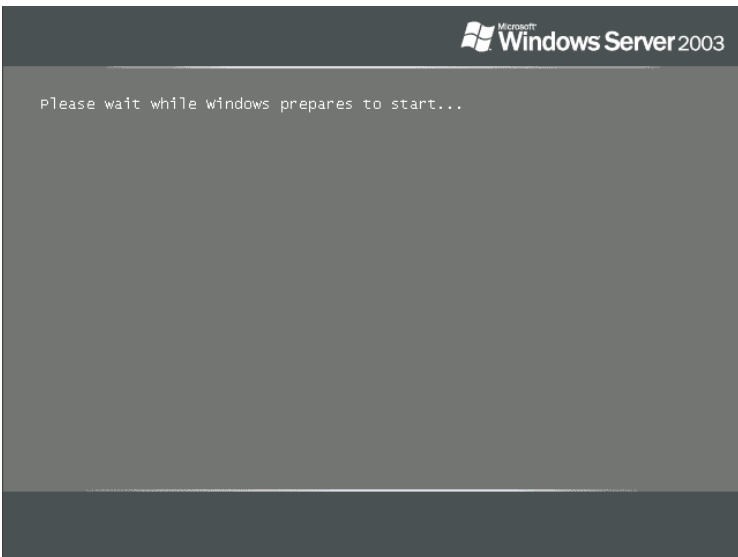
---

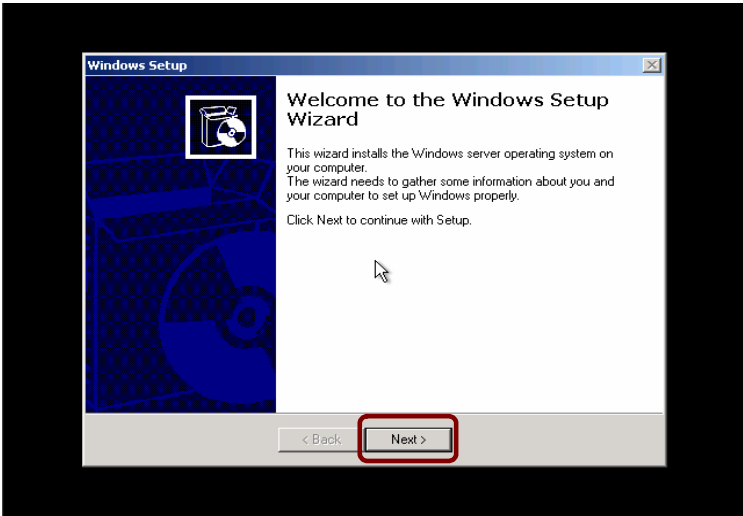
Before starting DNS-3200 for the first time, it is necessary to have the system undergo Initialization Setup, which includes setting the title, area, language of the computer, manager's password, network configuration as well as activation of the system. After this, the user may proceed to use DNS-3200. This section contains information on Initial Setup.

**Note:** *Before turning the computer on for the first time, be sure the hardware has been properly installed and the network wires and power cord are connected properly.*

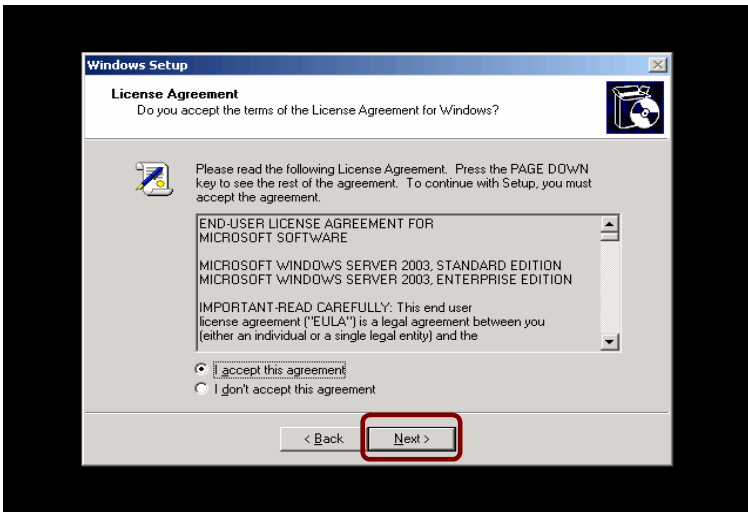
### 3.1.1 Turning the system on for the first time

1. When turning the system on for the first time, it will enter into the Initialization Setup screen (as shown below) and by pressing **Next**, Initialization Setup starts.

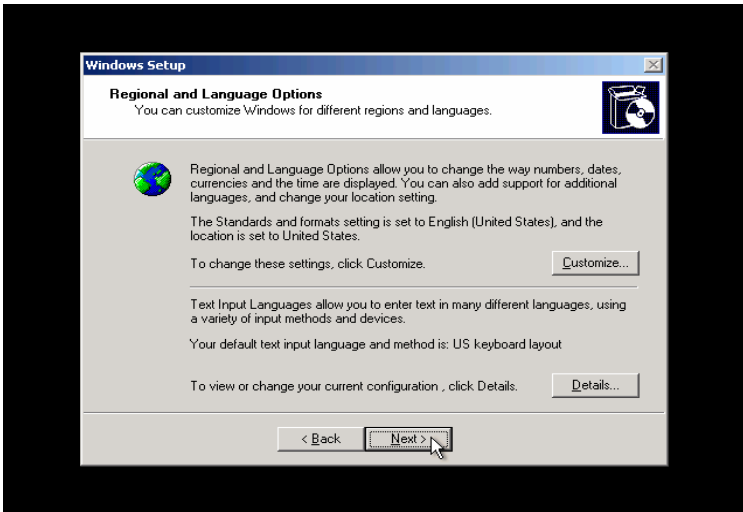




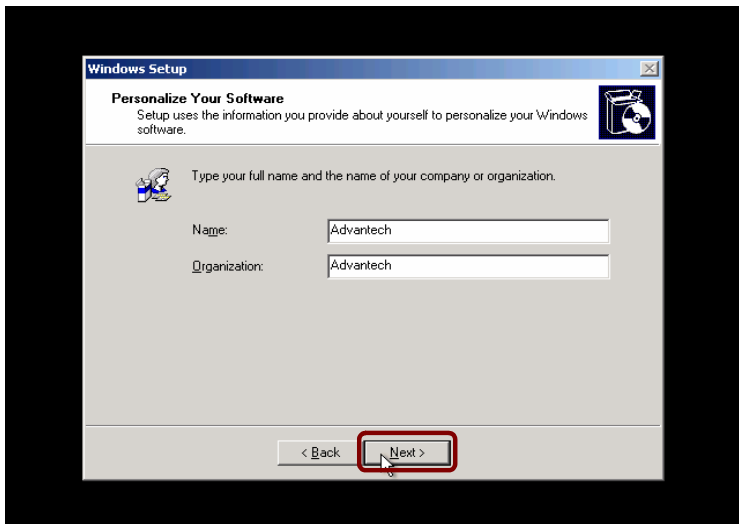
2. The END-User Authorization Agreement screen appears (as shown below). Please read the agreement carefully before accepting the agreement. Click **Next** to proceed.



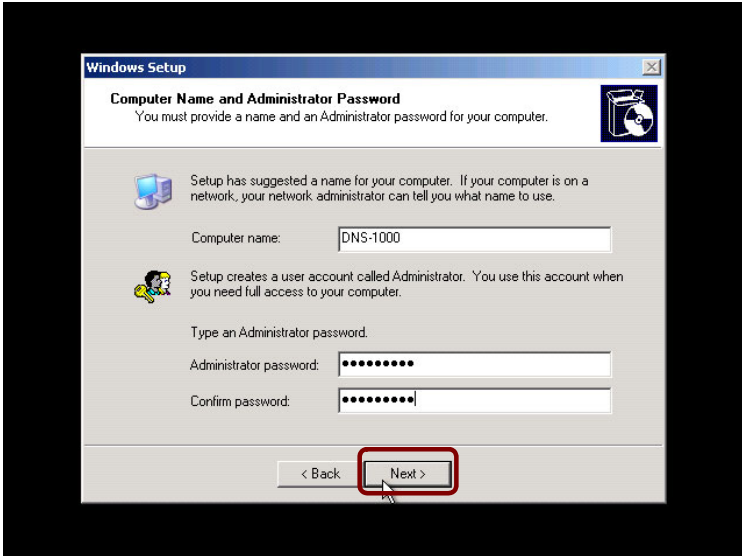
3. The Regional and Language Options screen appears (as shown below). Here the user may select Customize and Details to set location, language, language on display and key-in methods. Click **Next** to proceed.



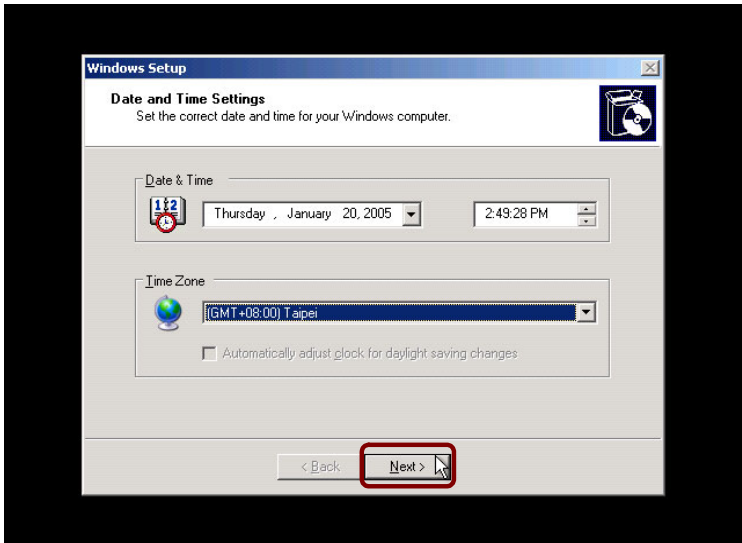
4. The Personalize Your Software screen then appears. Key in your and your organization's name. Click **Next** to proceed.



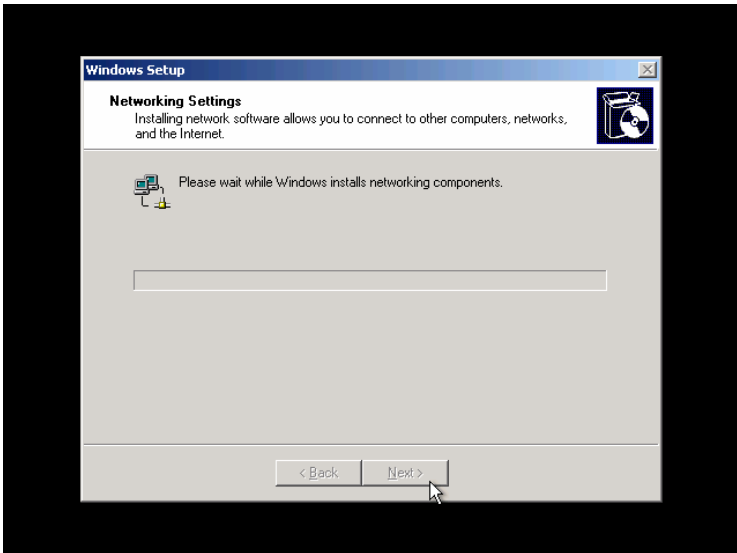
- Specify the computer's name and password for the Administrator. Type the Administrator's password again in Confirm Password. Click **Next** to proceed.



- The Date and Time settings screen appears. Select the correct date and time zone. Click **Next** to proceed.

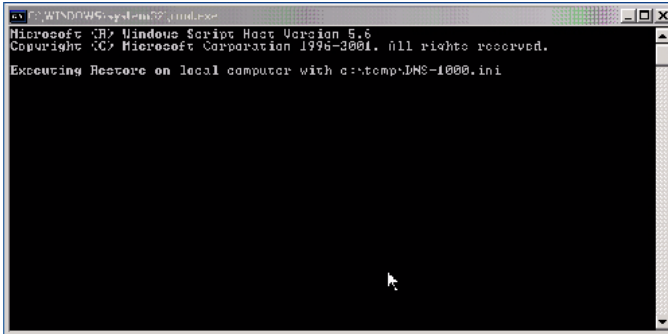


7. The system will then install networking components. The system is set for installation of TCP/IP Protocol. IP is set as DHCP. Click **Next** to proceed.



8. The system will restart. You will need to key in the new manager password for log-in.

After the login is completed, the system will automatically have the two Gigabit cards of the DNS-3200 set to load balancing mode (as shown below), where DNS-3200 has only one IP for access and the DNS-3200 will automatically assign the network flow onto the 2 network ports. Besides, it is available with failover function, which means that when one network port fails, the other one will be switched on automatically, just to maintain the online communication.



```
Microsoft Windows [Version 5.0]
Copyright (c) Microsoft Corporation 1996-2001. All rights reserved.

C:\> cd ..\temp\WSS2003\i1000.exe
Executing Restore on local computer with c:\temp\WSS-1000.ini
```

**Note:** *The load balancing mode requires the two network ports to be connected to one hub for normal operation. If the user chooses not to operate under load balancing mode, or an alternative mode is required, please see “Network Configuration Setting”.*

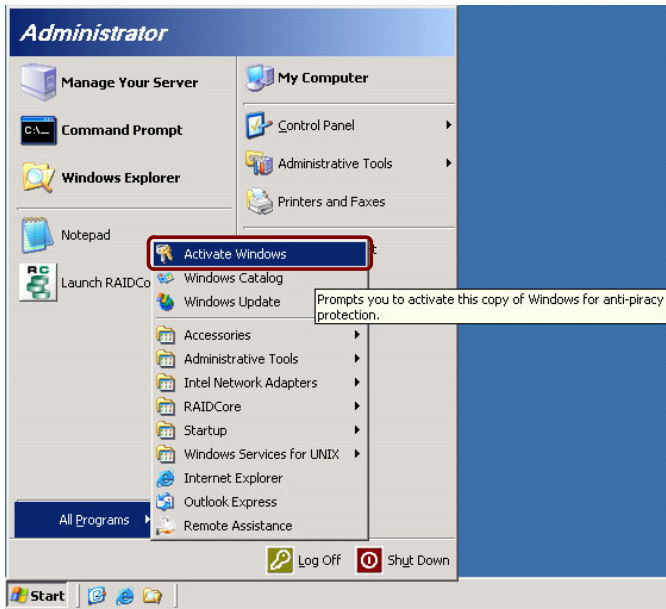
9. After setting load balancing mode, it is necessary to restart the system. Microsoft requires starting WSS2003 first to allow the system to become available.

### 3.1.2 WSS2003 Activation

Microsoft Windows Storage Server 2003 must undergo its activation procedure before you start using it. The activation procedure is possible via the internet or by phone. In this chapter, the procedure for activating WSS2003 via the Internet is described. Before starting the procedure, make sure the system is available for connection to the internet.

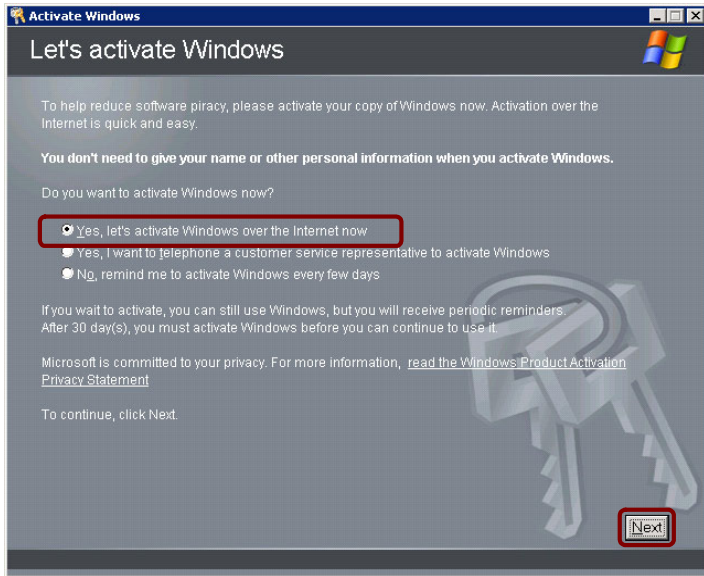
**Note:** *Microsoft makes the system available for use for 30 days without activating it. If the user fails to activate WSS2003 within 30 days, on the 31st day, the user will not be able to log in and then must activate to continue use.*

1. In Start, All Programs, select **Activate Windows for Initialization Setup**. (See figure below)

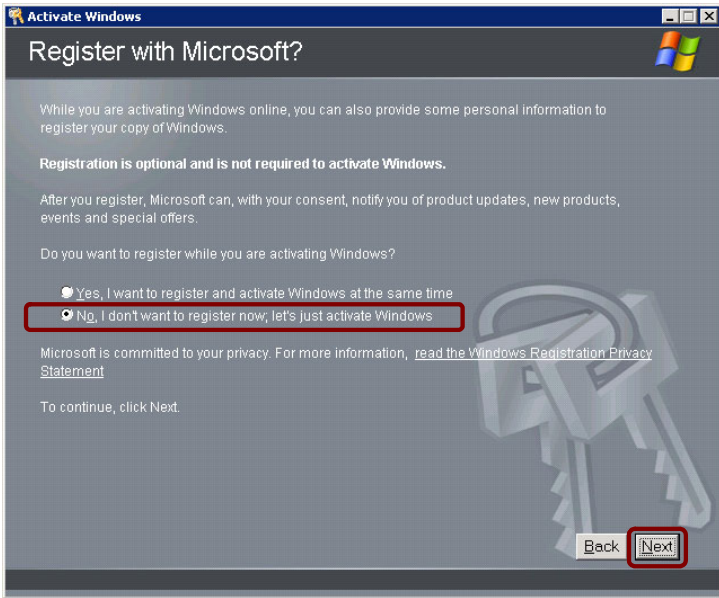




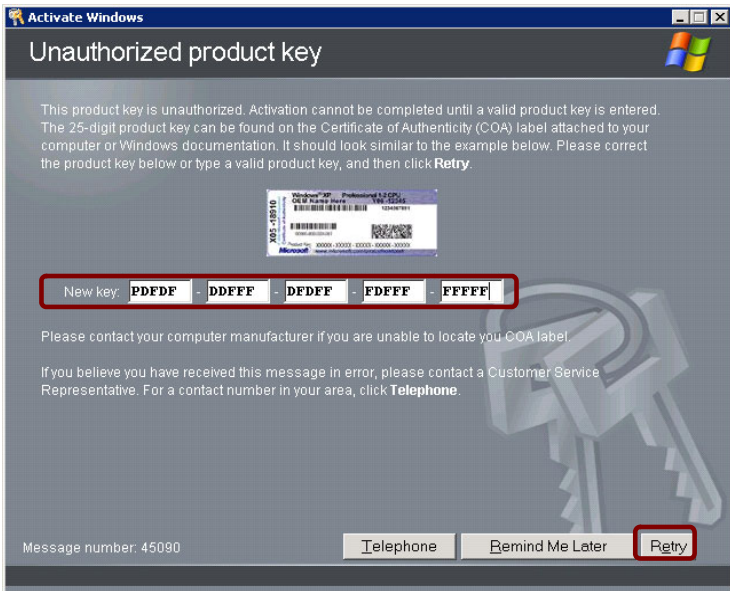
2. Then select “Yes, let’s activate Windows over the Internet now” (as shown below) and click **Next** to proceed.



3. Then select “No, I don’t want to register now”, let’s just activate Windows (as shown below) and click **Next** to proceed.



4. The system will check the online status of the internet connection. If the user can log on via internet successfully, the screen requesting the user to key in the Product Key (as shown below) will appear. When the DNS series is released from the factory, the software authorization sticker for the WSS2003 operating system is pasted on the unit. After keying in the Product Key given on the sticker, press **Retry**.



5. After starting the system successfully, a screen appears indicating the system has been successfully started. The initial setup for the DNS-3200 is complete and the user may proceed with other settings for the unit.
6. For remote management of the DNS-3200 via the internet, please refer to the **WSS\_2003 user Guide** available on the enclosed CD.

**Note:** *If the system is unable to log onto the Internet for Initialization Setup, browse to the following web-site for local telephone numbers:*

*<http://www.microsoft.com/licensing/resources/vol/numbers.nsp>*

### 3.1.3 Network configuration setting

When preset, the DNS-3200 can have the two built-in ethernet ports set as Network Load Balancing in Team Mode, which provides both network flow balancing and fault tolerance functions. To change the team mode, use Intel®PROSet for management of DNS-3200 Team Configuration.

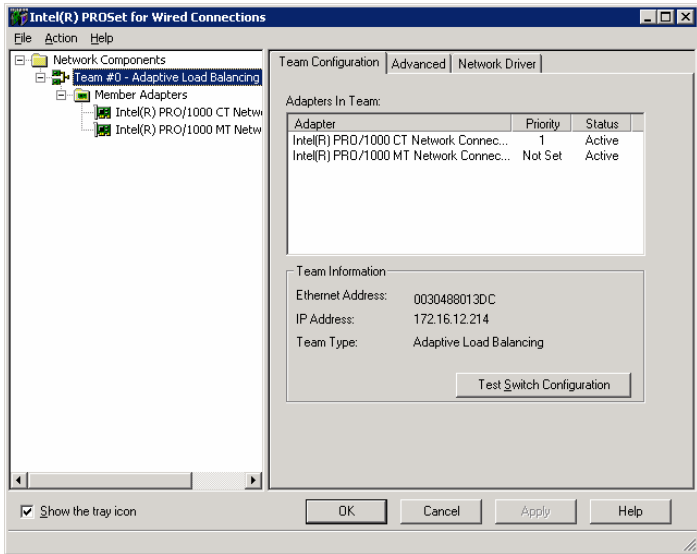
#### Intel PROSet

Intel PROSet is a program for advanced network configurations that allows the user to test network interface cards while setting standard and advanced functions. For the DNS-3200, there are several ways for the user to start the Intel PROSet program:

Task bar:  0:38 AM Double-click to start the program.

Console: 

PROSet's main window is shown below. To set advanced parameters, select the required interface cards from the window on the left and press the Advanced tab for associated settings. To change to online mode, select "Team #0 - Adaptive Load Balancing" from the window to the left by right-clicking the mouse. Then proceed with removal of Team Mode or change Team Mode as required. After setting, press **OK** for the change to be effective.



**Note:** *When changing Team Mode, online communications may experience temporary interruption.*

### Test Online Active

PROSet is able to test interface cards by checking the interface card hardware, cables or team for failures.

1. Start Intel PROSet.
2. Select the network interface card to test.
3. Press the Diagnostics tab once for the list of items to test.
4. Press Run Tests and select the items you want to test. Error information appears if any of the tests are failed.
5. Repeat Steps 2-4 to test each network interface card installed in the computer.

## **Team Mode**

Details of the functions and configurations required for each online mode provided by the DNS-3200 are given below.

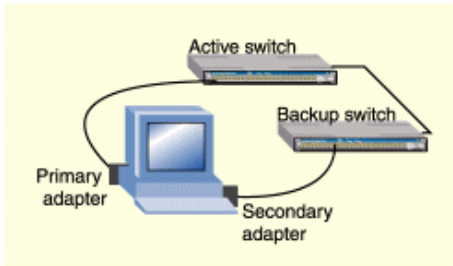
### **Adapter Fault Tolerance (AFT)**

**Function:** AFT provides automated residue to the network interface card as a fault tolerance. From the two network ports connected to the switch or hub at the same time, one is the primary network for normal team, and the other is the backup and is usually not in the “On” state. If the primary online adapter card develops a problem, the backup network will start and take over the team.

#### **Network configuration:**

1. The network port must be connected to the same network switch.
2. The switch must have the Spanning Tree Protocol (STP) in the “Off” state.
3. All switches are available for support.

## Swap Fault Tolerance (SFT)



**Function:** SFT provides automated residue to the network interface card as a fault tolerance. With the two network ports connected to different switches, one is the primary network for normal team and the other is the backup and is usually not in the “On” state. If the primary online develops problems, the backup network will start and take over the team.

### Network configuration:

1. Each network port must be connected to a different network switch.
2. The switch must have the Spanning Tree Protocol (STP) in “On” state.

## Adaptive Load Balancing (ALB)

**Function:** ALB provides load balancing and fault tolerance to the network flow and uses the software to analyze the transmission load on each interface card. For the two network ports sharing the load balancing of the transmission load and received flow load balancing of the IP protocol, if one team develops problems, the other team will take over the task.

### Network configuration:

1. The network ports must be connected to the same network switch.
2. All switches must be able to support ALB.

**Note:** *ALB does not balance non-routable communication protocols, such as NetBEUI and some other IPX\* flows.*

## Static Link Aggregation

**Function:** Static Link Aggregation provides network links for increased transmission and receiving flow as well as negative balancing and fault tolerance. The two network ports share all network flows, when one team develops problems, the other one takes over all tasks.

### Network configuration:

1. The network ports must be connected to the same network switch.
2. All network ports must be online at the same speed.
3. Use only network switches capable of Link Aggregation:
  - Use Cisco FEC or GEC network switches with the PAgP protocol.
  - Intel network switches
  - All network switches supporting static 802.3ad.

## Dynamic Link Aggregation

**Function:** Dynamic Link Aggregation provides network links for increased bandwidth as well as negative balancing and fault tolerance. Two network ports share all network flows, when one team develops a problem, the other one takes over all tasks.

### Network configuration:

1. The network ports must be connected to the same network switch.
2. All network ports must be online at different speeds.
3. The online switches must be fully compatible with the IEEE 802.3ad standard.

**Note:** *For full functions and details on the use of PROSet, please refer to User Instructions on PROSet.*



## **Managing Arrays and Disks**

This section gives information about Arrays and Disks.

This sections includes:

- RAID Minimum Disk Requirements
- Arrays and Disk States
- Tasks and Spares

# Chapter 4 Managing Arrays and Disks

## 4.1 RAID Minimum Disk Requirements

---

The following table lists the minimum and maximum number of disks for each RAID level.

*Table 4.1: Min and Max Disks for RAID levels*

RAID Level	Minimum Number of Disks	Maximum Number of Disks
Volume	1	32
RAID0	2	32
RAID1	2	2
RAID1n	3	16
RAID10	4	32
RAID10n	6	32
RAID5	3	16
RAID50	6	32

## 4.2 Understanding Array and Disk States

---

The controller uses states to report the status of arrays and disks. To ensure the health of your data, it is important to understand what each array and disk state means as well as what causes them to change.

### Array States

Within the management applications, an array is a logical device that can exist in one of three states: NORMAL, CRITICAL, or OFFLINE. In RAIDConsole, these states are shown in the **Array List** area in a column named **State**. Within the bcadm program, these states also shown in the column named **State**. The states are defined as follows:

Whether an array is marked as CRITICAL or OFFLINE depends on the type of array and how many disks within the array have failed. Note the following changes in state:

1. **NORMAL** The NORMAL state is displayed when everything is functioning correctly.
  2. **CRITICAL** The CRITICAL state is displayed when the array is no longer redundant (fault tolerant) because of one or more disk failures. Arrays can still be read and written to, but the data is no longer protected should another drive fail.
  3. **OFFLINE** The OFFLINE state is displayed when arrays cannot be read or written to because of one or more disk failures.
- For RAID1 and RAID5 (redundant arrays), the CRITICAL state is displayed when a single disk fails.
  - For RAID1n, RAID10, RAID10n, or RAID50 (array types with multiple redundancies), the CRITICAL state is displayed if a single disk fails in any one of those sets.
  - For Volume and RAID0, the OFFLINE state is displayed when a single disk fails.
  - For RAID1 and RAID5 (redundant arrays), the OFFLINE state is displayed when two or more disks fail.
  - For RAID1n, RAID10, RAID10n (array types with multiple redundancies), the OFFLINE state is displayed if all disks in a set fail.
  - For RAID50 (an array type with multiple redundancies), the OFFLINE state is displayed if two or more disks fail within the same set. For example, RAID50 is a stripe of RAID5 sets. If a RAID50 set contains three RAID5 sets, each RAID5 set can have up to one disk failure and the RAID50 array state shows as CRITICAL. If a fourth disk fails, the state of the RAID50 array changes to OFFLINE. If two drives fail on one of the RAID5 sets, the state of the RAID50 array changes to OFFLINE.

More than one array can be created using the same set of disks. If you disconnect a disk that belongs to more than one array, only the arrays that try to access the disk and receive I/O errors report the failure. For example: you have two arrays, both RAID5 sets, and both use disk 4. If a system being used by array 1 receives an I/O error when trying to communicate with disk 4, the state of array 1 will change to CRITICAL. However, the state of array 2 using disk 4 will not change to CRITICAL until an I/O error is reported. If systems using array 1 are not communicating with the failed disk, the state of array 1 still displays as NORMAL. If you perform

a rescan of all channels after disconnecting a disk, the state of every array using the missing disk changes from NORMAL to either the CRITICAL or OFFLINE, depending on the array type.

## Disk States

Within the management applications, a disk can be part of one or more arrays and can exist in one of three states: NORMAL, FAILED, or UNKNOWN. In RAIDConsole, these states are displayed in the **Disk List** area in a column named **State**. Within the bcadm program, these states are also displayed in a column named **State**. The states are defined as follows:

- **NORMAL** The NORMAL state is displayed when the disk is connected, functioning correctly, and the controller can communicate with it.
- **FAILED** The FAILED state is displayed when the controller can recognize the disk, but cannot read or write to it.
- **UNKNOWN** The UNKNOWN state is displayed when the disk is new and has not been initialized, or is in a format unrecognizable by the controller.

If a disk fails, its state in the Disk List is displayed as FAILED. However, if the system tries to communicate with a disk that has been physically disconnected, the disk shows as FAILED in the Array List window but still appears in the Disk List as NORMAL until a rescan is performed. After you have rescanned the SATA channels for information, the disconnected disk disappears from the Disk List.

## Rescanning for Changes in State

When using the `bcadm` program, the disk information that displays when you run a query command is always current. In the RAIDConsole application, however, the information displayed in the Disk List area is the state of the disks when they were last scanned. If you have not performed a rescan, the information being displayed is the state of the disks at boot time.

Every time you connect or disconnect a disk while online, a message asking if you want to perform a rescan (of all SATA channels) appears. If you choose **Yes**, the information in both the Array List and the Disk List is updated. However, this view may show arrays as being in a **CRITICAL** or **OFFLINE** state if not all disks have been installed or removed.

Although it is highly recommend that you shut down the system before you add or remove disks, you may also be able to add or remove disks while online if your system supports that feature. Because of this feature, RAIDConsole does not automatically perform a rescan when it detects that a disk has been added or removed. For example, if you want to hot-swap a RAID5 set with six disks into a new system, do not perform a rescan until all six disks have been connected. Otherwise, any arrays associated with the disks that are not yet connected change state to either **CRITICAL** or **OFFLINE**. If the state of your RAID5 set changes to **OFFLINE**, you will lose your data. This feature can also result in the state of a disk being reported differently in the Array View and the Disk List. A disk within an array can have a state of **FAILED** in the Array tree view while at the same time it can show a state of **NORMAL** in the Disk List.

## 4.3 Starting and Stopping Tasks

---

Tasks are started when you:

- Create a redundant array.
- Transform an array.
- Restore an array.
- Check for consistency on redundant arrays.
- Verify a consistency bitmap (`check_bitmap`) on a redundant array.

The only type of task that you can stop without deleting the array is a consistency check (`CHECK`).

The following types of tasks can be displayed for each array:

- **TRANSFORM** The `TRANSFORM` task is displayed while an array is being transformed.
- **CREATE** The `CREATE` task is displayed while an array is being created.
- **CHECK** The `CHECK` task is for redundant type arrays only. This task is displayed while verifying that the parity (RAID5) or mirror drive consistency is correct.
- **RESTORE** The `RESTORE` task is displayed while an array is being restored.
- **CHECK\_BITMAP** The `CHECK_BITMAP` task is displayed while verifying that the parity on a RAID5 set, or the mirror halves on a RAID1/10 set, are consistent. This action is performed automatically if your system crashes.
- **NOT\_ACTIVE** The `NOT_ACTIVE` task is displayed when no other tasks are being performed.

**Note:** *When a task is in progress and the system is shut down, the RAID driver may hang under certain circumstances. This may occur if arrays exist and a task is in progress, but a drive letter has not been assigned AND an OS partition has not been created on the array. Because neither a drive letter nor partition has been assigned, the OS doesn't notify the RAID driver that the system is shutting down. If this condition occurs, the system can be reset, the OS will start, and the RAID process will also restart.*

## 4.4 Working with Spares

---

### 4.4.1 About Sparing Options

The DNS-3200 Series RAID controller supports three sparing options:

- **Distributed** A patent-pending sparing option comprised of reserved space on each disk in an array
- **Dedicated** A spare disk assigned to a specific, redundant array
- **Global** A spare disk that is shared by multiple arrays

Spares are restored in the following order:

- **Dedicated**
- **Distributed**
- **Global**

- Notes:**
1. An array is marked critical or offline if a disk returns failure to an I/O request, or if the SATA or power cable is disconnected.
  2. You can assign one or more spares to a redundant array type.
  3. Spare assignments do not apply to non-redundant array types. To protect this data, you must first transform the array to a redundant array type (see “Transforming Arrays”). You can then assign spares.

#### 4.4.2 Using Distributed Sparing

The distributed sparing feature reserves space on each drive in an array. This space is used when the data from a failed drive is being regenerated during a restore task. Whereas other methods of sparing (such as dedicated spares) provide the same level of protection, distributed sparing provides better performance because all drives are active in an array and are not sitting idle, as is the case with dedicated spares. Another advantage of distributed spares is that because all drives are active, a drive cannot fail and go unnoticed, as is the case with dedicated or global spares. This is because with distributed sparing, each array has its own dedicated fail-over spaces.

This averts the potential problem of having insufficient space to start a failover on the single disk that has been assigned as a spare.

A distributed spare is assigned at the time an array is created or transformed. Distributed spares are valid only for RAID5 (four or more drives), RAID50 (four or more drives per RAID5 set), and RAID10 and RAID10n (six or more drives).

This spare type is the most protective because space is allocated when the array is created. Like a dedicated spare, this spare type is assigned to a specific array. If you initially created an array without a distributed spare, you must transform the array to add a distributed spare. This is because a distributed spare can be assigned only when an array is being created or transformed.



- Notes:**
- 1. If there is insufficient unused space on the disks in an array, you cannot add a distributed spare without adding an additional disk and transforming to an array with distributed sparing enabled. The distributed spare option uses the equivalent storage of one of the disks in the array. For example: the total capacity of six drives is being used in a RAID5 array, and you have enabled distributed sparing, the capacity of the array is the same as a four-drive RAID0. The capacity of one disk is lost to the RAID5 parity data, and the capacity of another disk is lost to the distributed sparing option.*
  - 2. See “About Sparing Options”.*

**To add a distributed spare while creating an array:**

1. On the **Array** menu, click **Create**.
2. Configure the array.
3. In the **Distributed Spare** field, click **Enabled**.

### **To add a distributed spare while transforming an array:**

1. On the **Array** menu, click **Transform**.
2. Configure the new array.
3. In the **Distributed Spare** field, click **Enabled**.

### **To remove a distributed spare:**

1. On the **Array** menu, click **Transform**.
2. Configure the new array.
3. In the **Distributed Spare** field, click **Disabled**.

### **4.4.3 Using Dedicated Sparing**

A dedicated spare is a disk that you assign as an alternate disk for a specific array. Should a disk fail in that array, the alternate disk is used to replace the failed disk and the array is rebuilt. A dedicated spare can be assigned to any redundant array type, and up to four spares can be assigned to an array.

**Notes:**

- 1. Assigning a dedicated spare does not reserve space on that drive. Therefore, an automatic restore is not guaranteed if a disk fails. If a disk does fail, you must make room on the disk for the fail-over to complete, or you must assign a different disk with enough room. If a dedicated spare is assigned and a drive fails, the restore process starts automatically if there is enough space available on the dedicated spare.*
- 2. You cannot assign a dedicated spare while a task is running on the array.*
- 3. When you assign a dedicated spare either while creating or transforming an array, the first drive you select to create the array is assigned by default as the dedicated spare.*
- 4. When you add a dedicated spare after the array has been created, you can select which disk to use as the spare.*
- 5. For more information see “About Sparing Options”.*

#### 4.4.4 Using Global Sparing

A global spare is a disk that you assign as an alternate disk for multiple arrays instead of associating it with just one. Many arrays can be restored using the global spare disk as long as it is not already part of the array and it has enough space available. Unlike a dedicated spare, this type of spare can be assigned at anytime, even while tasks are running on arrays.

- Notes:**
- 1. Assigning a disk for use as a global spare does not reserve space on that disk. Therefore, an automatic restore is not guaranteed if a drive fails. If there is not enough disk space on the global spare, you must either make room for the fail-over to complete or assign a different disk with enough room as the spare. However, if there is enough space available on the global spare and a drive failure occurs, the restore process starts automatically.*
  - 2. For more information see “About Sparing Options”*

## **BIOS Configuration Utility**

This section explains when and how to use the BIOS Configuration Utility.

This sections includes:

- When to Use BIOS Utility
- BIOS Utility Color Codes
- Initializing Disks from the BIOS
- Creating Arrays from the BIOS
- Deleting Arrays from the BIOS
- Swapping Arrays from the BIOS
- Hiding or Unhiding Arrays from the BIOS
- Viewing Disk Details from the BIOS
- Viewing Array Details from the BIOS
- Rescanning All Channels from the BIOS
- Changing Controller Options from the BIOS
- Continue Booting from the BIOS

# Chapter 5 Using the BIOS Configuration Utility

## 5.1 When to Use the BIOS Configuration Utility

---

The firmware component of the installation kit includes the BIOS Configuration Utility. You must use this utility to:

- **Create the boot array:** If you are not booting off of the array, you do not need to use this utility to create an array, although you can. You can create a non-bootable array in the RAIDConsole management application.
- **Swap in a copy of the boot array:** In RAIDConsole, you can make a copy of your boot array by mirroring and then splitting the array. By default it is hidden from the operating system. If you were to lose the boot array, you can use the BIOS Configuration utility to Unhide the copy and swap it into the first position in the **Arrays** list.
- **Initialize a new disk:** When you are adding a new disk you can initialize it from the BIOS.

- Notes:**
1. *The first device in the Arrays list is the bootable array. You can only boot from the first device in the list.*
  2. *Until the BIOS loads, the LEDs are not indicative of disk connectivity.*

### To enter the BIOS Configuration Utility

When booting the system, press CTRL+R when the BIOS banner is displayed. You have up to three seconds to enter the BIOS using this key combination.

## 5.2 Color Codes for the BIOS Array Config Utility

---

The following color codes are used to indicate the type or status of information displayed on the screen.

- **White text** Available option or informational text
- **Yellow highlighting** Current option on which you may choose to take action
- **Green text** Item has been selected
- **Light blue text** Item is not available for selection
- **Yellow text** Informational text, describes an option
- **Magenta text** Spare options and boot options
- **Red text** Failed drive or other warning to user. For example, informational text may be red if the option is not available.

## 5.3 Initializing Disks from the BIOS

---

Before using new disks they must be initialized and at least the boot array must be created using the RAIDCore BIOS Array Configuration Utility.

Initialization writes the configuration information to disk. The BIOS utility can be used to create and manage arrays so that an operating system can be installed on an array. The system is then booted from this array.

- Notes:**
1. *When you highlight a disk from the Disk list, the LEDs on the controller or a properly cabled disk enclosure light up to identify that disk.*
  2. *If you want to boot from another controller within your system, you may need to disable INT13 in the BIOS. See "Changing Controller Options from the BIOS".*
  3. *For more information see "Color Codes for the BIOS Array Config Utility" in 5.2.*

### **To initialize disks from the BIOS:**

1. Turn on your computer to start booting.
2. When prompted, type <CTRL-R> to access the RAID BIOS Array Configuration Utility. The RAID **Array Configuration** menu is displayed (see “Color Codes for the BIOS Array Config Utility” in 5.2).
3. Use the arrow keys to select **Initialize Disk(s)** from the **Main** menu.
4. Press **Enter**.
5. Use the arrow keys to highlight a disk, and then press the **Insert** key to select the disk or choose all selectable disks by pressing A.

**Note:** *You can select multiple disks; there is no need to initialize one disk at a time.*

## **5.4 Creating Arrays from the BIOS**

---

After your disks are initialized, you can create arrays. You can create a maximum of eight arrays from the BIOS. See “Understanding Arrays” if you have not yet decided what type of arrays you need.



**Notes:**

1. *In some circumstances, more than eight arrays are possible and may appear to function properly, but are not supported by Broadcom.*
2. *For redundant arrays, the creation process does not complete until after the operating system and controller drivers have been installed and you have booted into the operating system context. However, the arrays are immediately available to use for either a boot or data array.*
3. *Array numbers are valid only for a given boot, and may be different in the BIOS and drivers. If a permanent label is required, use the labeling feature.*
4. *When you highlight a disk from the Disk list, the LEDs on the controller or a properly cabled disk enclosure light up to identify that disk.*
5. *At any point in the following procedure, you can return to a prior screen by pressing ESC.*
6. *See see “Color Codes for the BIOS Array Config Utility” in 5.2.*

**To create an array:**

1. From the main menu of the Array Configuration screen, select Create Array using the arrow keys, and then press **Enter**.
2. Select the disks on which to create the array by doing the following:
  - a. Highlight the disk using the arrow keys.
  - b. For each disk, press the **Insert** key to select the disk. You can insert the disks in any order.
  - c. After selecting the disks to be included in the array, press **Enter**.
3. In the **User Input** area, select an array type with the arrow keys, and then press **Enter**. Only array types that can be created with the selected disks are available.
4. If spares are applicable:

- a. In the User Input area, highlight a spare type using the arrow keys.
  - b. If applicable, in the Disks area, highlight the disk(s) to use as a spare and press Insert to select them.
  - c. Press **Enter** to add the spare disk(s).
5. To select an array size, do one of the following:
  6. Use the **Page Up/Page Down** keys or the arrow keys to select a size, and then press **Enter**.

**Note:** *By default all available space up to 2.199 TB is selected.*

Or do the following:

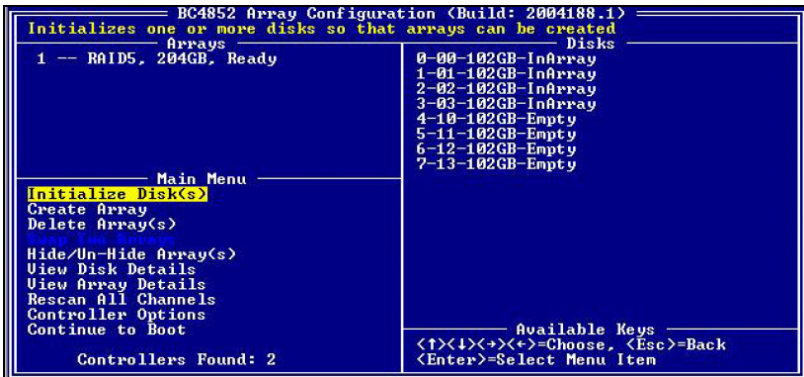
**To create an array that is greater than 2.199 TB (the maximum allowed by some operating systems):**

**Note:** *The Windows operating system does not support arrays larger than 2 TB.*

1. Press PAGE UP or the up arrow to increase the array size. You are asked if you want to limit the size of the array to the 2 TB maximum.
2. Press ESC to create a larger array.
3. Press PAGE UP or the up arrow until you have reached either the desired size or the maximum available.
4. Press **Enter**.
5. Select a caching mode using the arrow keys, and then press **Enter**.
6. Press **C** to continue the array creation process.

**Note:** For installations of SuSE Linux, a popup appears that says, “A new device was found, do you want to configure it?” If you do not want to see this popup when you create arrays, you can check the “Do not notify me” checkbox.

7. The array is marked *Ready* for use, and the text at the top of **Array Configuration** returns to a description of the menu items.
8. When you are finished creating arrays, resume the boot process:
  - a. From the **Main** menu, highlight **Continue to Boot**.
  - b. Press **Enter**. No reboot is required.



*Figure 5.1: Create an array*

In the example above, a 4-drive RAID5 array has been configured.

## 5.5 Deleting Arrays from the BIOS

---

This option allows you to delete arrays.

**Caution!:** *Deleting an array permanently destroys all data that was on the array. You will not be able to undo this action and all data will be lost.*

### To Delete an Array:

1. Highlight Delete Array(s) from the **Main** menu and press **Enter**.
2. Do one of the following:
  - a. Highlight each array to delete and press **Insert** to select it.
- Or
- b. Type **A** to select all arrays for deletion.
3. Press **Enter**.
4. Press **C** to continue.

## 5.6 Swapping Arrays from the BIOS

---

Using the **Swap Two Arrays** option, you can reorder arrays.

- Notes:**
1. *If you create more than one array, you can install the operating system to any of them. However, a small amount of boot information is always written to a disk in the first array on your array list regardless of which array you install the operating system on. If anything happens to that disk in Array 1, you will not be able to boot. Broadcom recommends installing on a redundant array type — such as RAID1 or RAID5 — and then swapping that array into the first position if it is not already Array 1.*
  2. *This swap feature is only available from the BIOS.*

### To swap arrays:

1. Highlight **Swap Two Arrays** in the **Main** menu, and then press **Enter**.
2. Use the arrow keys to highlight an array, and then press **Insert** to select it.
3. Use the arrow keys to highlight another array, and then press **Insert** to select it.
4. Press **Enter** to swap the arrays.

```
BC4852 Array Configuration <Build: 2004188.1>
Swaps arrays to allow them to load in any order <Boot array is first>
-----
Arrays                                     Disks
1 -- RAID5, 204GB, Ready                   0-00-102GB-InArray
2 - RAID10, 204GB, Ready                   1-01-102GB-InArray
                                           2-02-102GB-InArray
                                           3-03-102GB-InArray
                                           4-10-102GB-InArray
                                           5-11-102GB-InArray
                                           6-12-102GB-InArray
                                           7-13-102GB-InArray
-----
Main Menu -----
Initialize Disk(s)
Delete Array(s)
Swap Two Arrays
Hide/Un-Hide Array(s)
View Disk Details
View Array Details
Rescan All Channels
Controller Options
Continue to Boot

Controllers Found: 2

----- Available Keys -----
<↑><↓><←><→>=Choose, <Esc>=Back
<Enter>=Select Menu Item
```

*Figure 5.2: Swap arrays*

In this example, the RAID10 array was the first array created. However, to boot from the RAID5 array, the arrays were swapped so that the RAID5 array is the first device listed.

## 5.7 Hiding or Unhiding Arrays from the BIOS

---

The **Hide/Unhide** array option allows you to hide or Unhide an array or arrays from the operating system. If an array is hidden it will not be visible through INT13 or to the operating system when booted. This is a useful feature for hiding hot backups of the system.

**Note:** *You cannot hide a legacy array from the BIOS. You can hide a legacy array from the operating system (using RAIDConsole), if you have not booted off the legacy array and another non-legacy disk is attached to the controller.*

### To hide or Unhide an array:

1. Select the **Hide/Unhide** option.
2. Use the arrow keys to highlight the array to be hidden or unhidden.
3. Press the **Insert** to select an array.
4. Press **Enter** to commit the selection.

The hidden array turns blue in the **BIOS Configuration Utility** and the status of the array displays as **Hidden**.

## 5.8 Viewing Disk Details from the BIOS

---

This option allows you to view details about the disk. When you highlight a disk from the **Disk** list, the LEDs on the controller or a properly cabled disk enclosure light up to identify that disk.

**Note:** *Nothing can be changed from this menu option. It is for information only.*

### To view disk details:

1. From the **Main** menu, select **View Disk Details**.
2. Use the arrow keys to choose a disk.

The details of the disk are displayed in the **Information** field across the top, and include the following data:

- **Disk Number**
- **Controller Number**
- **Channel Number**
- **Disk Size**
- **New/Legacy/Empty/InArray**
- **Free Space**
- **Disk Model Number**

## 5.9 Viewing Array Details from the BIOS

---

This option allows you to look at the details of the array. Nothing can be changed from this menu option. It is for information only.

### To view array details:

1. From the **Main** menu, select **View Array Details**.
2. Use the arrow keys to choose an array.

The full details of the array are displayed in both the Information field across the top, and include the following data:

- **Array Number**
- **Type**
- **Size**
- **State**
- **Name**
- **Cache setting**
- **DOS size**

**Note:** *The Disks list shows the disks in the array as selected (green).*

## 5.10 Rescanning All Channels from the BIOS

---

This option allows you to rescan all channels to detect new or removed disks and arrays.

To perform a rescan, select **Rescan All Channels** from the **Main** menu. The activity indicator in the **Information** field spins while the disks are being polled.



## 5.11 Changing Controller Options from the BIOS

---

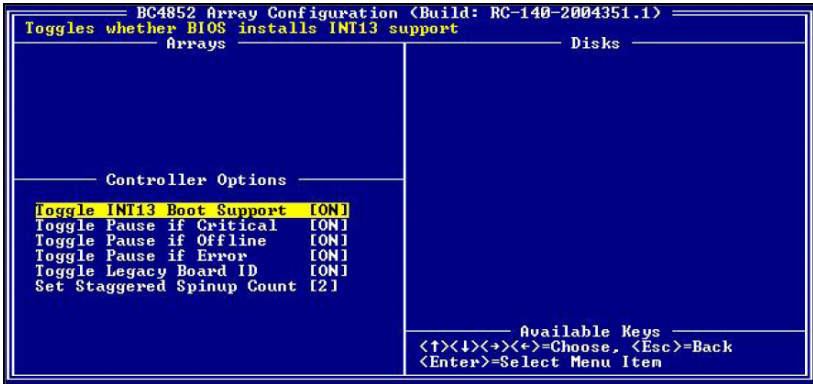
Selecting **Controller Options** allows you to configure whether arrays may be bootable, as well as other aspects of the boot process. The default is to configure an array so that an operating system can boot from the RAID. If an error occurs, an error message is displayed. However, you may be booting from the motherboard IDE or another SCSI device in your system. If this is the case, you may not want to install INT13 (without INT13, DOS cannot see the array).

**Note:** *If you configure **Boot Mode** to install INT13 and to never display an error message, you will not know during the boot process if an array is degraded or if other problems have occurred.*

This menu also sets whether you want the boot process to pause when an error occurs. When the **Pause** feature is enabled and an array goes critical or offline, or there is a controller configuration error, the boot process stops and you must press **Enter** to continue booting. This gives you time to view the error message on the screen. If the **Pause** feature is disabled, the error message is displayed briefly, but the system continues to boot.

### To select a boot option:

1. From the **Main** menu, select **Controller Options**. The **Controller Options** area is displayed in the **BIOS Array Configuration Utility** window as shown below. The current settings display in magenta text above the white selectable options.



*Figure 5.3: Change controller options*

2. Use the arrow keys to select a boot option.

**Note:** *By default, all options are turned on. Broadcom recommends that you leave them enabled.*

3. Do one of the following:
  - a. If you do not want to boot from an array, highlight **Toggle INT13 Installation** using the arrow keys, and then press **Enter** to change the setting to **Disabled**. (We recommend disabling INT13 only if you want to boot from another device, and leave the rest of the options enabled.)

Or

  - b. To turn off warnings due to critical arrays when booting, highlight **Toggle Pause if Critical**, and then press **Enter** to change the setting to **Disabled**.

Or

  - c. To turn off warnings due to offline arrays when booting, highlight **Toggle Pause if Offline**, and then press **Enter** to change the setting to **Disabled**.

Or

- d. To turn off warnings due to controller configuration errors when booting, highlight **Toggle Pause if Error**, and then press **Enter** to change the setting to **Disabled**.

## 5.12 Continue Booting from the BIOS

---

After you have created arrays, you can continue booting the system from the point where the RAID BIOS was entered. To resume the boot, highlight **Continue to Boot** in the **Main** menu, and then press **Enter**. No reboot is required.



## **RAID Console Operations**

This section explains the RAID Console.

This section includes:

- RAID Console Management


# Chapter 6 RAID Console Operations

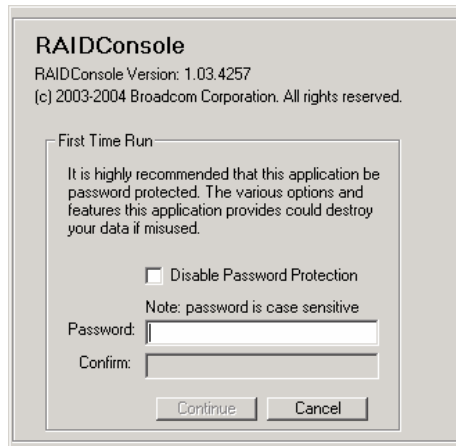
## 6.1 RAID Console Management

---

For the DNS-3200, RAID management is achieved using the RAID console, of which a brief description on the main functions is given in this chapter. For detailed functions and use of the RAID console, please refer to the RAID Management User Guide in the CD available with this unit.

### RAID Console

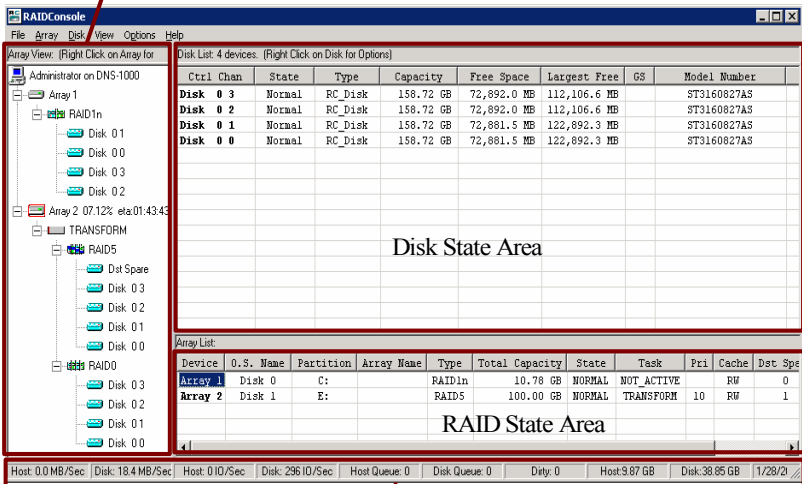
RAID console can be started from the  icon on the screen. When you start for the first time, you will be asked whether to set or not to set the manager password for RAID console.



- Notes:**
1. The password must consist of at least 6 characters.
  2. Passwords are case sensitive.
  3. Do remember the password and store in a safe place. If you forget it, you will not be allowed to access the RAID Console.
  4. You are given four opportunities to key in the correct password. After the 4th attempt, the program will close and you have to restart.

After a successful setting of the password, the user is allowed into the primary screen of the RAID Console, where there are four sections (as shown below), which are described as follows:

RAID list



System I/O State

**Disk State Area:** Available with state information on each disk, including:

- **Ctrl Chan:** Shows which RAID controller channel the disk is connected to.
- **State:** Disk state, which could be Normal, Failed and Unknown.
  1. Normal: Disk online and in normal operation.
  2. Failed: RAID controller identifies the disk, but can not read it or write to it.
  3. Unknown: New disk or not initialized by RAID controller or freshly formatted.
- **Type:** Type of disk located on the RAID controller (RC\_DISK, RC\_Legacy, or NEW).
- **Capacity:** Capacity of the disk.
- **Free Space:** Space available on the disk.
- **Largest Free:** Continuous free space segment available on the disk.
- **GS:** Indicating whether the disk has been designated as a Global Spare.
- **Model Number:** Model number of the disk.

**Array State Area:** Available with information on each and every RAID corresponding to each logical disk, including:

- **Device:** No. of disk RAID
- **O.S. Name:** Title designated by the operating system to the array. If the array is in a hidden state, it shows Hidden; if it is off line, it shows “??”
- **Partition:** Number of the corresponding disks of the operating system in the array.
- **Array Name:** Name given to the array.
- **Type:** Type of the array.
- **Total Capacity:** Space available in the array.
- **State:** The state before the array, which comes in Normal, Critical and Offline.
  1. Normal: Array in normal operation.
  2. Critical: One or more disk failures make array fault tolerance not available, yet the system has normal access to the array.



3. Offline: One or more disk failures force the array to go offline, so the system cannot access the array.
- **Task:** Shows the RAID tasks being executed (Transform, Check, Check\_Bitmap, Not active, Create, and Restore).
  - **Priority:** If any task is being executed, the priority of the task is shown.
  - **Cache:** Cache mode of the array in NC = No Cache, R = Read Cache, W = Write Back Cache and RW = Read/Write Cache.
  - **Dst Spare:** Showing whether the array is available with distributed spare.
  - **Ded Spare:** Showing whether the array is available with dedicated spare.

**Array List Area:** Details of each array are shown, including array disk and online RAID level migration.

## 6.1.1 Mirror Split

Individual arrays can be made using mirror split as a preset or advanced option. Making splits using advanced options allow the user to indicate clearly which disk to reserve as part of the original array.

### Mirror split as a preset option

A Mirror can be split into individual arrays. One RAID1 array can be split into 2 JBODs and one standard RAID 10 can be split into 2 RAID0 arrays. One standard RAID 1N array or RAID10N array can be split into 1 JBOD and 1 original array.

**Note:** *A Split cannot be cancelled. Online RAID Level Migration is required to change a split JBOD into a mirror again.*

### Mirror split as a preset option

1. Select the array to split using the right button of the mouse.
2. On the array menu, select **Mirror > Split > Default**.

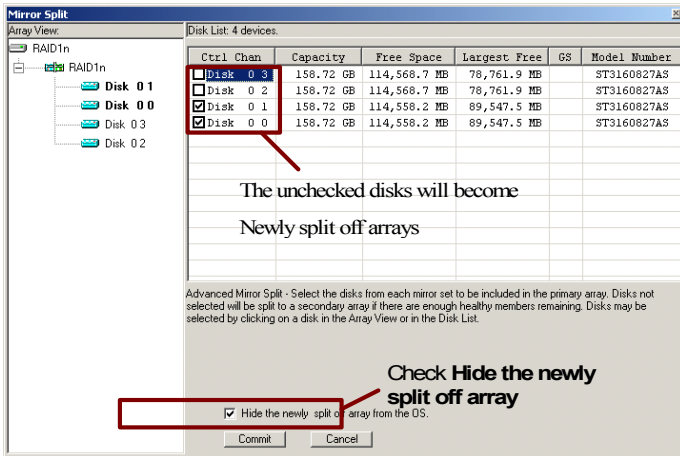
**Note:** *Split arrays will become hidden. To keep them from being hidden, right-click on the split arrays and select Unhide to cancel the option.*

### Mirror split as an advanced option

For RAID1N or RAID10N mirrors, advanced options can be used for different splits. When using advanced options, you may first select the disks to be reserved as part of the original array, while the other disks become the second array. For instance, you may split one RAID1N into 2 RAID1N arrays, or keep mirror split on different array controllers.

## Mirror split RAID1, RAID1Nm RAID10 or RAID10N as advanced option:

1. Select the array to split using the right button of the mouse.
2. On the array menu, select **Mirror > Split > Advanced** and the mirror split screen appears (as shown below).
3. Select the disc to stay that belongs to the original array.
4. The split arrays are hidden to avoid access by the operating system. If you do not want to hide the array, uncheck **Hide the newly split off array from the OS**.
5. Click **Commit** to begin the split.



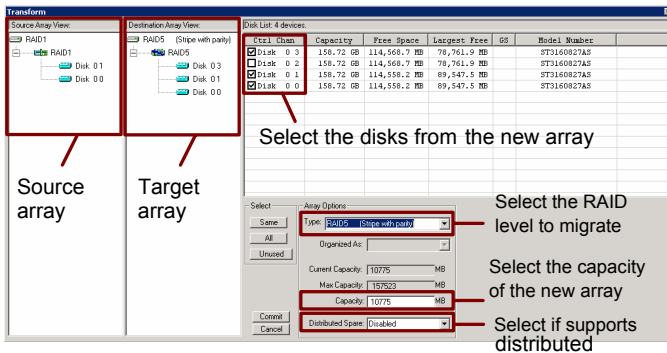
## 6.1.2 Online RAID Level Migration

RAID level migration allows you to migrate from a specific level of array to another one. This function allows online RAID level migration or online RAID expansion, even when the system is carrying out I/O. You do not have to restart the system. Together with mirror split, this function provides a complete system backup and repair strategy.

- Notes:**
1. You can not migrate major RAID levels to minor ones. A new RAID level needs to be of the same level or higher than the original array.
  2. If the system fails during migration, once the system is restarted, the migration will continue.
  3. If the hard disk were damaged during migration, as long as both arrays before and after the migration are available with fault tolerance, no data would be lost.
  4. Online RAID level migration can build a maximum array capacity of 2.199TB (1MB = 1,000,000 bytes and 1TB = 1,000,000MB).

### Online RAID level migration:

1. Select the array to split using the right button of the mouse.
2. On the array menu, select **Transform**. The Online RAID level migration window appears (as shown below).



3. Select the RAID level to migrate.

4. In the disk status area, select the disks that you want to have in the new array. The disks can be the ones included in the RAID to be migrated to.
5. Set the capacity of the migrated array the same as the original array. To expand capacity, just key in the capacity of the new array.
6. Click **Commit** to begin the split.

**Note:** *If you have set the wrong migration configuration, you will not be allowed to press the Commit key. You may have too few disks for the selected RAID level, or not enough space for the selected capacity.*

7. Unless the migration is completed immediately, the array list area will show the RAID in migration.



## **System Maintenance**

This section explains how to maintain the DNS-3200.

This section includes

- Operating System Split
- Operating System Swap
- Operating System Repair

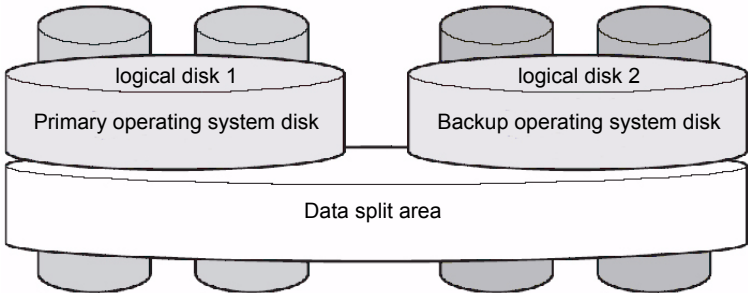
# Chapter 7 System Maintenance

## 7.1 System Protection & Repairs

---

DNS-3200 features a large number of advanced technologies for the protection of the system and data, assuring that failure and system down time is minimized. In this chapter, we are giving detailed information about the protection provided for the system and data.

When DNS-3200 is released from the factory, the operating system split area comes in RAID 1N mode, where 10GB of the hard disc becomes a logical disk for the split of the operating system. When the user completes system setup, the mirror split is RAID 1N consisting of 4 hard disks in two RAID 1 arrays (mirrors), one as a disk split area for the primary operating system and the other as a split area for the hidden backup operating system (not accessible). When the primary operating system is unable to turn the system on because of an unstable program, virus infection or human factors, the system can then be switched to the backup operating system mirror to turn the system on for service. The following figure shows the configuration of disks split by RAID 1N.

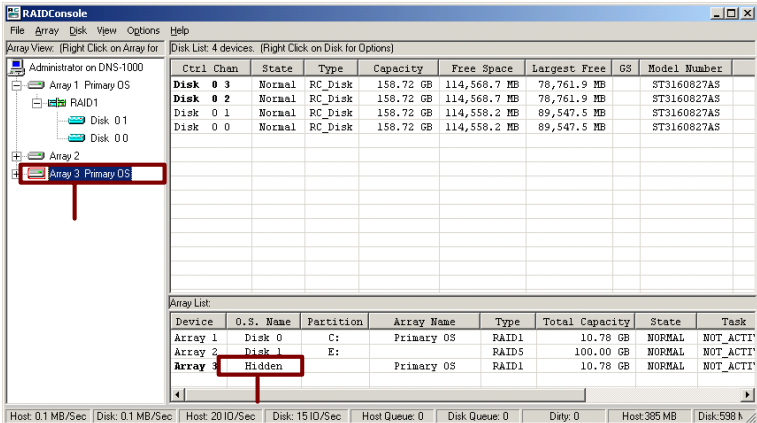




## 7.1.1 Operating System Split

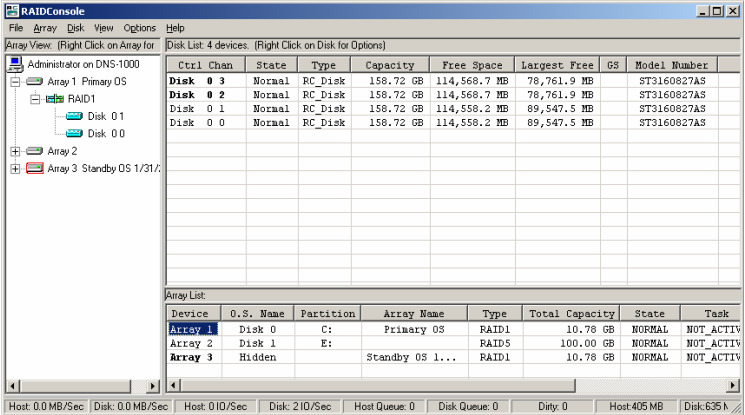
When the administrator completes setup of the DNS-3200, including user accounts, permissions, and programs, the operating system is saved using mirror split as the backup method.

1. Use the advanced option to split RAID1N into 2 RAID1 arrays. At this time, Array 3 (as shown below) appears in the split array list.



Shown as Hidden,  
The system is not accessible

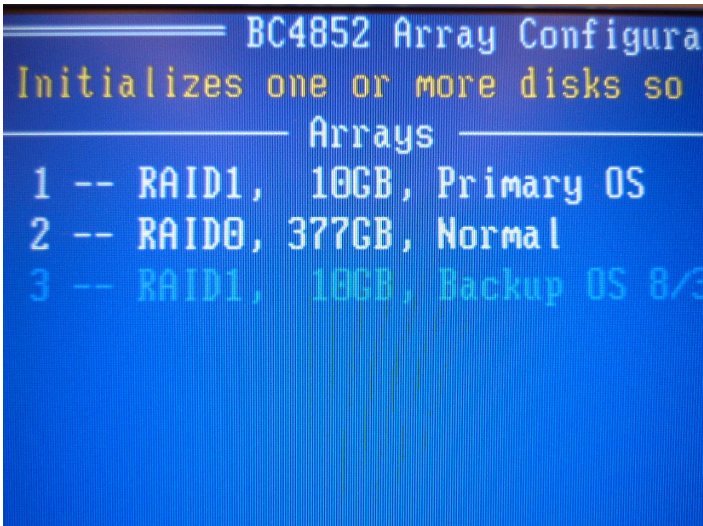
- The split backup system array (Array 3) is renamed, with a date for identification. Right-click Array 3 and select **Name** on the array list. The name window appears. Key in the name you want and then press **Change Name**.



## 7.1.2 Operating System Swap

When the primary operating system is damaged and can't start, the hidden backup operating system (Array 3) can be used to start the system. The RAID BIOS must be used to swap to the hidden backup OS.

1. Restart the unit and press <Ctrl-R> to enter the RAID BIOS.
2. In the upper left corner you can see the complete list of arrays (as shown below). Array 3 has just undergone a mirror split. The blue indicates that it is a hidden array. As only one array (Number 1) can be used to turn on the system, we have to swap the backup system array to the first, so it can be used to turn on the system.



- Use the **Insert** key to decide on the 2 arrays to swap. The selected arrays will be shown in green (as shown below).

```
1 -- RAID1, 10GB, Primary OS, Norma
----- Arrays -----
1 -- RAID1, 10GB, Primary OS
2 -- RAID0, 377GB, Normal
3 -- RAID1, 10GB, Backup OS 8/31/20
```

4. After the selection, press **Enter** to execute the swap. After the swap, Array 3 (Backup OS) turns into Array 1 (as shown below).



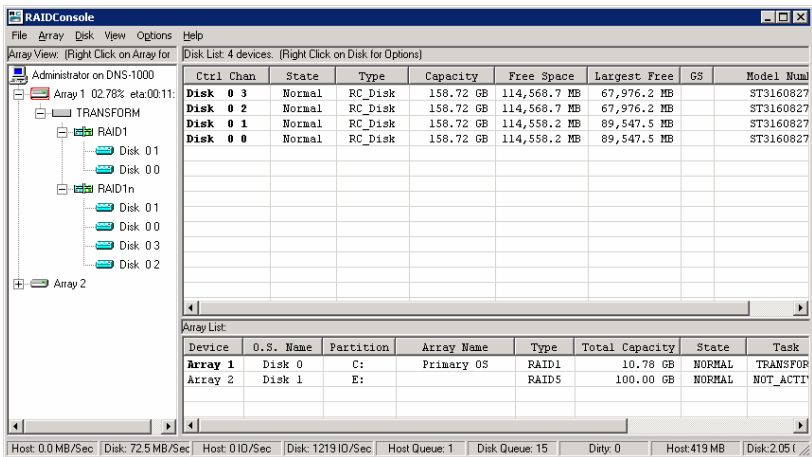
5. Finally, change the hidden Backup OS to unhidden, and Primary OS to hidden. Select **Hide/Unhide Array(s)**. Use the **Insert** key to select Standby, Backup OS and press Enter to execute. After canceling the hide, the Backup OS array is shown in white and Primary OS in blue as shown below. Select Continue to boot the system.



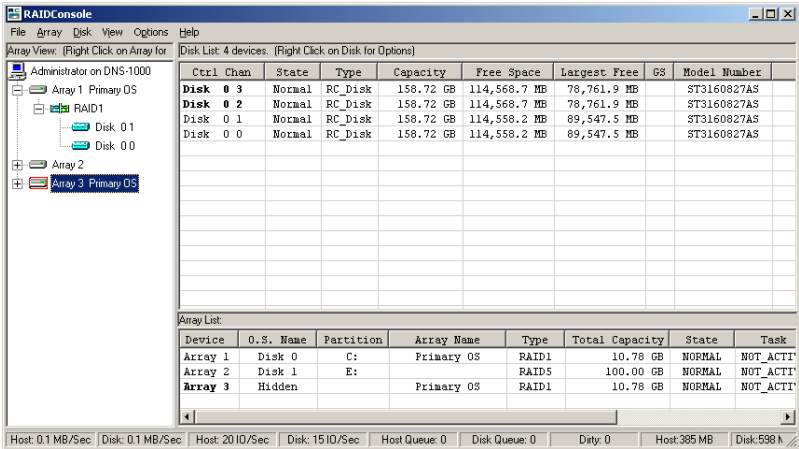
### 7.1.3 Operating System Repair

After turning on the system with the backup operating system, the damaged operating system (Array 3) must be repaired, so it can be the backup operating system.

1. Open the RAID Console and right-click on the Primary OS (Array 3). Then click **Delete** and select **OK** to delete the damaged Primary OS array.
2. Change the current Backup OS array name to “Primary OS” for easy identification.
3. Use the RAID transform function on “Primary OS” (now Array1) to migrate the two-disk RAID 1 to a four-disk RAID 1N.



- After RAID online migration is finished, use Mirror Split on the Primary OS (Array 1) to split it into 2 x RAID 1 arrays. The split array is shown as “Array 3 Primary OS.”



- Rename Array 3 to Backup OS with a date for easy identification. The array is then the new backup operating system array.

The aforementioned steps of system split, system swap and system repair assure that no matter what damage is caused to the system, it can be repaired for immediate service after being set up, without further configuration. This further increases availability of the system and minimizes system down time caused by accidents and hardware failure.



**Notes:**

*1. When it is assured that the system is functioning correctly after undergoing major changes (e.g. software installation, hardware modification), the backup operating system should be updated (by deleting the backup operating system array, migrating the primary operating system array as RAID1N and splitting the primary array). This assures that the backup operating system is always up-to-date.*

*2. If there is more space available, you may build more backup operating systems at different times, each identified by a date. Whenever necessary, select the required operating system (you want to use to turn on the system) and cancel the hidden status.*



# APPENDIX A

## Hardware Specifications

This section lists the hardware specifications.

This section includes:

- Hardware Specifications

# Appendix A Hardware Specifications

**Table A.1: Hardware Specifications**

<b>Processor</b>	CPU	Intel® Xeon EMT64 with Hyper-threading
	Max. Speed	3.6 GHz
	L2 Cache	1 MB/2 MB
	Chipset	Intel E7520
<b>Bus</b>	Front Side Bus	800 MHz
<b>Memory</b>	Technology	DDR 400 SDRAM
	Max. Capacity	32 GB
	Socket	200-pin DIMM x 8
<b>Ethernet</b>	Interface	10/100/1000Base-TX x 2 (with failover/load balance)
	Controller	Intel 82546 GB x 2
	Connector	RJ-45 x 2
<b>SCSI (Optional)</b>	Interface	Ultra 320
	Controller	Adaptec 7902 W
	Max. Data Transfer Rate	320 MB/sec.
	Channel	2 (External)
<b>Hardware RAID</b>	Controller	Hardware RAID support RAID 0, 1, 5, 10, 50, 1N, JBOD single-disk multiple array, Online Capacity Expansion, Online RAID Level Migration and Distributed Spare
<b>Driver Bay</b>	3.5" HDD	15 (internal SATA HDD)
<b>I/O Interface</b>	Serial	2 (RS-232)
	USB	4 (USB 2.0)
	VGA	1 (for local configuration)
	PS/2	2 (mouse x 1, keyboard x 1)

<b>Management</b>	Indicator	LED for system power, fan/temperature alarm, LAN active x 2; LED for HDDs ID/power/active
	System Monitoring	Power, fan/temperature/voltage alarm
<b>Power Supply</b>	Watt	760 W + 380 W w/fan speed control
	Redundant	Triple redundant hot-swap
	Input	AC 90 ~ 264 V @ 47 ~ 63 Hz, full range
<b>Environment</b>	Temperature	0 ~ 35 degrees Celsius
	Humidity	5 ~ 90%
<b>Physical</b>	Dimensions (W x H x D)	17" x 5.1" x 25.5"
	Weight (w/o HDDs)	33 Kg (72lbs)



## Free Manuals Download Website

<http://myh66.com>

<http://usermanuals.us>

<http://www.somanuals.com>

<http://www.4manuals.cc>

<http://www.manual-lib.com>

<http://www.404manual.com>

<http://www.luxmanual.com>

<http://aubethermostatmanual.com>

Golf course search by state

<http://golfingnear.com>

Email search by domain

<http://emailbydomain.com>

Auto manuals search

<http://auto.somanuals.com>

TV manuals search

<http://tv.somanuals.com>