

PCA-6774

**ISA Socket370 Slot PC,
VGA/LCD/LVDS/LAN/CFC
with optional second LAN and
Gigabit LAN**

User Manual

Copyright

This document is copyrighted, © 2005. All rights are reserved. The original manufacturer reserves the right to make improvements to the products described in this manual at any time without notice.

No part of this manual may be reproduced, copied, translated or transmitted in any form or by any means without the prior written permission of the original manufacturer. Information provided in this manual is intended to be accurate and reliable. However, the original manufacturer assumes no responsibility for its use, nor for any infringements upon the rights of third parties that may result from such use.

Acknowledgements

Award is a trademark of Award Software International, Inc.

VIA is a trademark of VIA Technologies, Inc.

IBM, PC/AT, PS/2 and VGA are trademarks of International Business Machines Corporation.

Intel and Pentium are trademarks of Intel Corporation.

Microsoft Windows® is a registered trademark of Microsoft Corp.

RTL is a trademark of Realtek Semi-Conductor Co., Ltd.

ESS is a trademark of ESS Technology, Inc.

UMC is a trademark of United Microelectronics Corporation.

SMI is a trademark of Silicon Motion, Inc.

Creative is a trademark of Creative Technology LTD.

All other product names or trademarks are properties of their respective owners.

For more information on this and other Advantech products, please visit our websites at: **<http://www.advantech.com>**

<http://www.advantech.com/eplatform>

For technical support and service, please visit our support website at:

<http://www.advantech.com/support>

This manual is for the PCA-6774.

Part No. 200K677410

2nd Edition, Dec. 2005

Packing List

Before you begin installing your card, please make sure that the following materials have been shipped:

- 1 PCA-6774 all-in-one single board computer
- 1 startup manual
- CD-ROM or disks for utility, drivers, and manual (in PDF format)
- 1 Power cable p/n: 1703080101
- 1 PS/2 KB/M cable p/n: 1700060202
- 1 COM port cable p/n: 1700100250
- 1 Printer cable p/n: 1700260250
- 1 FDD cable p/n: 1703340400
- 1 EIDE cable p/n: 1701400452
- Mini Jumper p/n: 1653300100

If any of these items are missing or damaged, contact your distributor or sales representative immediately.

Optional item:

1700100170 USB cable adapter (2.54 mm)

Model No. List

Description

PCA-6774F-00A1	ISA Socket 370 half-sized CPU Card with VGA/LCD/LVDS/LAN/CFC
PCA-6774FG-00A1	ISA Socket 370 half-sized CPU card with VGA/LCD/LVDS/Giga LAN/CFC
PCA-6774F-02A1	ISA Eden 400 half-sized CPU card with VGA/LCD/LVDS/2LAN/CFC

Additional Information and Assistance

1. Visit the Advantech web site at **www.advantech.com** where you can find the latest information about the product.
2. Contact your distributor, sales representative, or Advantech's customer service center for technical support if you need additional assistance.

Please have the following information ready before you call:

- Product name and serial number
- Description of your peripheral attachments
- Description of your software (operating system, version, application software, etc.)
- A complete description of the problem
- The exact wording of any error messages

FCC

This device complies with the requirements in part 15 of the FCC rules: Operation is subject to the following two conditions:

- 1. This device may not cause harmful interference, and*
- 2. This device must accept any interference received, including interference that may cause undesired operation.*

This equipment has been tested and found to comply with the limits for a Class A digital device, pursuant to Part 15 of the FCC Rules. These limits are designed to provide reasonable protection against harmful interference when the equipment is operated in a commercial environment. This equipment generates, uses, and can radiate radio frequency energy and, if not installed and used in accordance with the instruction manual, may cause harmful interference to radio communications. Operation of this device in a residential area is likely to cause harmful interference in which case the user will be required to correct the interference at his/her own expense. The user is advised that any equipment changes or modifications not expressly approved by the party responsible for compliance would void the compliance to FCC regulations and therefore, the user's authority to operate the equipment.

Caution!



Achtung!

There is a danger of a new battery exploding if it is incorrectly installed. Do not attempt to recharge, force open, or heat the battery. Replace the battery only with the same or equivalent type recommended by the manufacturer. Discard used batteries according to the manufacturer's instructions.

Contents

Chapter 1	Introduction	2
1.1	Introduction	2
1.2	Features	2
1.3	Specifications	3
1.3.1	Standard SBC Functions	3
1.3.2	VGA/LCD Interface	3
1.3.3	Solid State disk	4
1.3.4	PCI bus Ethernet interface	4
1.3.5	Mechanical and Environmental	4
1.4	Board layout: dimensions	5
	Figure 1.1:Board layout: dimensions (component side).....	5
	Figure 1.2:Board layout: dimensions (solder side).....	6
Chapter 2	Installation	8
2.1	Jumpers.....	8
	Table 2.1:Jumpers.....	8
2.2	Connectors.....	8
	Table 2.2:Connectors.....	8
2.3	Locating Connectors (component side).....	10
	Figure 2.1:Jumper & Connector locations.....	10
2.4	Locating Connectors (solder side).....	11
	Figure 2.2:Connectors (solder side).....	11
2.5	Setting Jumpers	11
2.6	Clear CMOS (J1).....	13
	Table 2.3:CMOS clear (J1).....	13
2.7	COM2 RS232-422-485 Select (J3)	14
	Table 2.4:COM2 RS232-422-485 Select.....	14
2.8	Watchdog timer configuration	14
2.8.1	Watchdog timer output option (J2).....	14
	Table 2.5:Watchdog timer output option (J2).....	14
2.9	Installing DIMMs.....	15
2.10	ATX power control connector (CN20,CN21).....	16
2.10.1	ATX feature connector (CN20) and soft-on power button connector (CN21).....	16
	Figure 2.3:Wiring for ATX soft power switch function.....	16
2.11	Printer port connector (CN4).....	17
2.12	CompactFlash Socket.....	17
2.12.1	CompactFlash (CN5).....	17
2.13	Floppy drive connector (CN3)	17
2.13.1	Connecting the floppy drive	17
2.14	IDE connector (CN1,CN2).....	18

	2.14.1	Connecting the hard drive.....	18
2.15		VGA/LCD interface connections.....	19
	2.15.1	CRT display connector (CN7).....	19
	2.15.2	Flat panel display connector (CN22).....	19
	2.15.3	Extension flat panel connector (CN23).....	19
	2.15.4	LVDS LCD panel connector (CN25).....	19
	2.15.5	Panel type selection (SW1).....	20
		Table 2.6:S1 Panel Type Select (SW1).....	20
2.16		USB connectors (CN6).....	20
2.17		Ethernet configuration.....	21
	2.17.1	100Base-T connector (CN8).....	21
	2.17.2	Network boot.....	21
2.18		Power connectors (CN14, CN15).....	21
	2.18.1	Main power connector, +5 V, +12 V (CN15).....	21
	2.18.2	CPU Fan power supply connector (CN14).....	21
2.19		ATX Power & HDD LED, speaker out Connector.....	22
	2.19.1	HDD LED (CN19).....	22
	2.19.2	ATX power LED & KB-LOCK (CN16).....	22
	2.19.3	Speaker out (CN17).....	22
2.20		COM port connector (CN9,CN10,CN29).....	22
2.21		Keyboard and PS/2 mouse connector (CN11).....	22
2.22		External KB/mouse connector (CN12).....	22
2.23		Watchdog output (CN18).....	23
2.24		Daughter card connector (CN27,CN28).....	23
Chapter 3		Software Configuration.....	26
	3.1	Introduction.....	26
	3.2	VGA display firmware configuration.....	26
		Figure 3.1:VGA setup screen.....	27
Chapter 4		Award BIOS Setup.....	30
	4.1	System test and initialization.....	30
	4.1.1	System configuration verification.....	30
	4.2	Award BIOS setup.....	31
	4.2.1	Entering setup.....	31
		Figure 4.1:BIOS setup program initial screen.....	31
	4.2.2	Standard CMOS Features setup.....	32
		Figure 4.2:CMOS Features setup.....	32
	4.2.3	Advanced BIOS Features setup.....	33
		Figure 4.3:Advanced BIOS Features setup.....	33
	4.2.4	Advanced Chipset Features setup.....	34
		Figure 4.4:Advanced Chipset Features setup.....	34
	4.2.5	Integrated Peripherals.....	35
		Figure 4.5:Integrated Peripherals.....	35
	4.2.6	Power Management Setup.....	35

	Figure 4.6:Power Management Setup.....	35
4.2.7	PnP/PCI Configurations.....	36
	Figure 4.7:PnP/PCI Configurations.....	36
4.2.8	PC Health Status	36
	Figure 4.8:PC Health Status.....	36
4.2.9	Frequency/Voltage Control.....	37
	Figure 4.9:Frequency/Voltage Control.....	37
4.2.10	Load Optimized Defaults.....	38
	Figure 4.10:Load BIOS defaults screen.....	38
4.2.11	Set Password.....	38
4.2.12	Save & Exit Setup.....	39
4.2.13	Exit Without Saving.....	40
Chapter 5	PCI SVGA Setup.....	42
5.1	Introduction	42
5.1.1	Chipset	42
5.1.2	Display memory.....	42
5.1.3	Display types.....	42
5.2	Installation of the SVGA Driver	43
5.2.1	Installation for Windows 95	43
5.2.2	Installation for Windows 98/Me.....	47
5.2.3	Installation for Windows NT	52
5.2.4	Installation for Windows 2000	57
5.2.5	Installation for Windows XP	62
5.3	Further Information	68
Chapter 6	PCI Bus Ethernet Interface.....	70
6.1	Introduction	70
6.2	Installation of Ethernet driver	70
6.2.1	Installation for MS-DOS and Windows 3.1.....	70
6.2.2	Installation for Windows 98	71
6.2.3	Installation for Windows 2000	74
6.2.4	Installation for Windows NT	79
6.3	Further information	85
Appendix A	Programming the Watchdog Timer	88
A.1	Supported Input Timing Modes	88
Appendix B	Pin Assignments	92
B.1	Primary IDE Connector (CN1)	92
	Table B.1:Primary IDE Connector (CN1).....	92
B.2	Secondary IDE Connector (CN2)	93
	Table B.2:Secondary IDE Connector(CN2).....	93
B.3	Floppy Connector (CN3).....	94
	Table B.3:Floppy Connector (CN3)	94
B.4	Printer Port Connector (CN4)	95
	Table B.4:Printer Port Connector (CN4).....	95

B.5	CompactFlash Socket (CN5).....	96
	Table B.5:CompactFlash Socket (CN5)	96
B.6	USB Connector (CN6)	97
	Table B.6:USB Connector (CN6).....	97
B.7	D-SUB VGA Connector (CN7)	98
	Table B.7:D-SUB VGA Connector (CN7).....	98
B.8	LAN RJ45 Connector (CN8).....	98
	Table B.8:LAN RJ45 Connector (CN8)	98
B.9	COM Port 1, 2 Connector (CN9, CN10).....	99
	Table B.9:COM Port 1 Connector (CN9, CN10)	99
B.10	PS/2 Keyboard & Mouse Connector (CN11).....	99
	Table B.10:PS/2 Keyboard & Mouse Connector.....	99
B.11	External Keyboard Connector (CN12).....	100
	Table B.11:External Keyboard Connector (CN12)	100
B.12	CPU Fan Connector (CN14)	100
	Table B.12:CPU FAN Connector (CN14).....	100
B.13	EBX Power Connector (CN15).....	101
	Table B.13:EBX Power Connector (CN15)	101
B.14	Power LED & Keyboard Lock (CN16).....	102
	Table B.14:Power LED & Keyboard Lock (CN16) ...	102
B.15	External Speaker (CN17)	102
	Table B.15:External Speaker (CN17).....	102
B.16	Reset Connector (CN18)	103
	Table B.16:Reset Connector (CN18).....	103
B.17	HDD LED Connector (CN19).....	103
	Table B.17:HDD LED Connector (CN19)	103
B.18	ATX Feature Connector (CN20).....	104
	Table B.18:ATX Feature Connector (CN20)	104
B.19	ATX Soft-on Power Button Connector (CN21).....	104
	Table B.19:ATX Soft-on Power Button Connector....	104
B.20	LCD 40-Pin Connector (CN22)	105
	Table B.20:LCD 40-Pin Connector (CN22).....	105
B.21	LCD 20-Pin Connector (CN23)	106
	Table B.21:LCD 20-Pin Connector (CN23).....	106
B.22	LCD Backlight Connector (CN24)	106
	Table B.22:LCD Backlight Connector (CN24)	106
B.23	LVDS Connector (CN25).....	107
	Table B.23:LVDS Connector (CN25)	107
B.24	I/O Daughter Board Connector 1 (CN27).....	108
	Table B.24:I/O Daughter Board Connector 1 (CN27)	108
B.25	I/O Daughter Board Connector 2 (CN28)	109
	Table B.25:I/O Daughter Board Connector 2 (CN28)	109
B.26	RS485/422 Connector (CN29)	109
	Table B.26:RS485/422 Connector (CN29).....	109

Appendix C	System Assignments	112
C.1	System I/O Ports.....	112
	Table C.1: System I/O ports	112
C.2	1st MB memory map.....	113
	Table C.2: 1st MB memory map	113
C.3	DMA channel assignments.....	114
	Table C.3: DMA channel assignments	114
C.4	Interrupt assignments	115
	Table C.4: Interrupt assignments	115

CHAPTER 1

General Information

This chapter gives background information on the PCA-6774.

Sections include:

- Introduction
- Features
- Specifications
- Board layout and dimensions

Chapter 1 Introduction

1.1 Introduction

Advantech's new PCA-6774 is a Socket 370 half-sized CPU card that will support up to 1.26GHz Pentium III with 512KB 2nd cache using VIA VT8606 "Twister T" chipset. This SBC includes a 4X AGP controller, a PCI Ethernet interface, and 36-bit TTL interface. Its design is based on the half-sized CPU card and supports ISA bus expansion. Other on-board features include an FDD, LPT, 2 USBs (4 USBs optional), and 2 serial ports. The SSD solution supports CompactFlash cards. This product uses a VIA Twister T chip with Integrated ProSavage4 2D/3D/Video Accelerator and supports 4X AGP VGA/LCD interface and up to 8/16/32 MB frame buffer using system memory. With the selection of daughter boards, the PCA-6774 board can support a second LAN at 10/100Mbps, also this CPU card can support Gigabit LAN with Intel 82540.

1.2 Features

- Supports Socket 370 for Intel processors up to Pentium III 1.26GHz with 512KB (Tualatin)
- ISA bus half-sized CPU card
- Supports selectable LAN (1 x 10/100BASE-T LAN or 2 x 10/100BASE-T LAN or 1 x Gigabit LAN)
- 4X AGP graphics for high performance applications
- Supports boot from USB device
- Supports wake-on-LAN
- Supports Ring-up by Modem
- Supports LVDS interface
- Supports LCD backlight turn-off function
- RS-485 Auto-flow

1.3 Specifications

1.3.1 Standard SBC Functions

- **CPU:** Supports Socket 370 for Intel processors up to Pentium III 1.26 GHz with 512KB cache (Tualatin)
- **System chipsets:** VIA VT8606 "Twister T" + VT82C686B
- **BIOS:** Award 256 KB Flash memory
- **System memory:** One DIMM socket accepts 64 MB up to 512 MB SDRAM
- **2nd cache memory:** 128/256/512KB on Celeron/PentiumIII processor
- **Enhanced IDE interface:** One channel supports up to two EIDE devices. Supports ATA-100, ATA-33 and PIO modes.
- **FDD interface:** Supports up to two FDDs
- **Serial ports:** Two serial RS-232 ports:
 - COM1: RS-232
 - COM2: RS-232/422/485
 - RS-485 supports AUTO-flow
- **Parallel port:** Parallel port supports SPP/EPP/ECP modes
- **Keyboard/mouse connector:** Supports standard PC/AT keyboard and a PS/2 mouse
- **Power management:** Supports power saving mode including Normal/Standby/Suspend modes. APM 1.2 compliant
- **Watchdog timer:** 62 level timer intervals
- **USB:** Two universal serial bus ports, Optional 4 ports.

1.3.2 VGA/LCD Interface

- **Chipset:** VIA VT8606 "Twister T" chip with integrated ProSavage4 2D/3D/Video Accelerator
- **Frame buffer:** Supports 8/16/32MB frame buffer with system memory
- **Interface:** 4X AGP VGA/LCD interface, Supports for up to 36 bit TFT
- **Display modes:**
 - CRT Mode: 1280 x 1024@16bpp (60Hz),
 - 1024 x 768@16bpp (85Hz),

LCD/Simultaneous Mode:

1280 x 1024@16bpp (60Hz),
1024 x 768@16bpp (60Hz),
1280 x 1024@32bpp

LVDS interface:

Supports 2-Channel (2 x 18-bit) LVDS interface

1.3.3 Solid State disk

- Supports **CompactFlash Type I/II** disks

1.3.4 PCI bus Ethernet interface

- Chipset: Intel 82551/82559/82540
- Ethernet interface: IEEE 802.3u compatible 10/100Base-T interface.
Supports selectable LAN (1 x 10/100base-T LAN or 2 x 10/100base-T LAN or 1x Gigabit LAN)
- I/O address switchless setting

1.3.5 Mechanical and Environmental

- **Dimensions (L x W):** 185 x 122 mm(7.3" x 4.8")
- **Power supply voltage:** +5 V, +12V \pm 5%
- **Power requirements:**
 - Max:**
6.18 A @ +5 V, 0.22 A @+12 V
 - Typical:**
5.5 A @ +5 V, (with PC133 128MB SDRAM, Pentium III 1.0 GHz)
0.17 A @ +12 V, (with PC133 128MB SDRAM, Pentium III 1.0 GHz)
- **Operating temperature:** 0 ~ 60°C (32 ~ 140°F)
- **Operating humidity:** 0% ~ 90% Relative Humidity, Non condensing
- **Weight:** 0.27 kg (weight of total package)

1.4 Board layout: dimensions

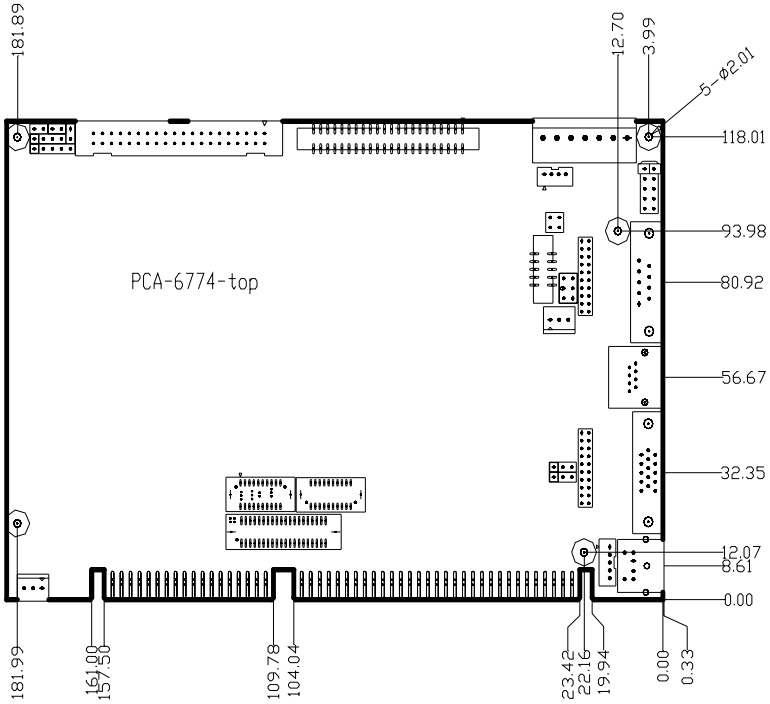


Figure 1.1: Board layout: dimensions (component side)

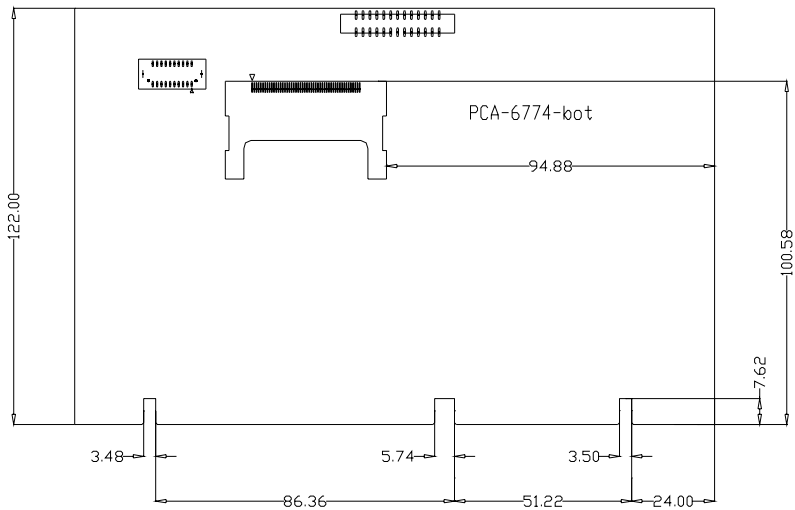


Figure 1.2: Board layout: dimensions (solder side)

CHAPTER 2

Installation

This chapter explains the setup procedures of PCA-6774 hardware, including instructions on setting jumpers and connecting peripherals, switches and indicators. Be sure to read all safety precautions before you begin the installation procedure.

Chapter 2 Installation

2.1 Jumpers

The PCA-6774 has a number of jumpers that allow you to configure your system to suit your application. The table below lists the functions of the various jumpers.

Table 2.1: Jumpers

Label	Function
J1	CMOS clear
J2	Watchdog timer output selection
J3	COM2 RS232-422-485 Select

2.2 Connectors

Onboard connectors link the PCA-6774 to external devices such as hard disk drives, a keyboard, or floppy drives. The table below lists the function of each of the board's connectors

Table 2.2: Connectors

Label	Function
CN1	Primary IDE Connector
CN2	Secondary IDE Connector
CN3	Floppy Connector
CN4	Printer Port Connector
CN5	CompactFlash Socket
CN6	USB Port 1, 2
CN7	D-SUB VGA Connector
CN8	LAN RJ45 Connector
CN9	COM Port 1
CN10	COM Port 2
CN11	PS/2 Keyboard & Mouse Connector

Table 2.2: Connectors

CN12	External Keyboard Connector
CN14	CPU FAN Connector
CN15	EBX Power Connector
CN16	Power LED & Keyboard Lock
CN17	External Speaker
CN18	Reset Connector
CN19	HDD LED Connector
CN20	ATX Feature Connector
CN21	ATX Soft-on Power Button Connector
CN22	LCD 40-Pin Connector
CN23	LCD 20-Pin Connector
CN24	LCD Backlight Connector
CN25	LVDS Connector
CN27	I/O Daughter Board Connector 1
CN28	I/O Daughter Board Connector 2
CN29	RS485/422 Connector

2.3 Locating Connectors (component side)

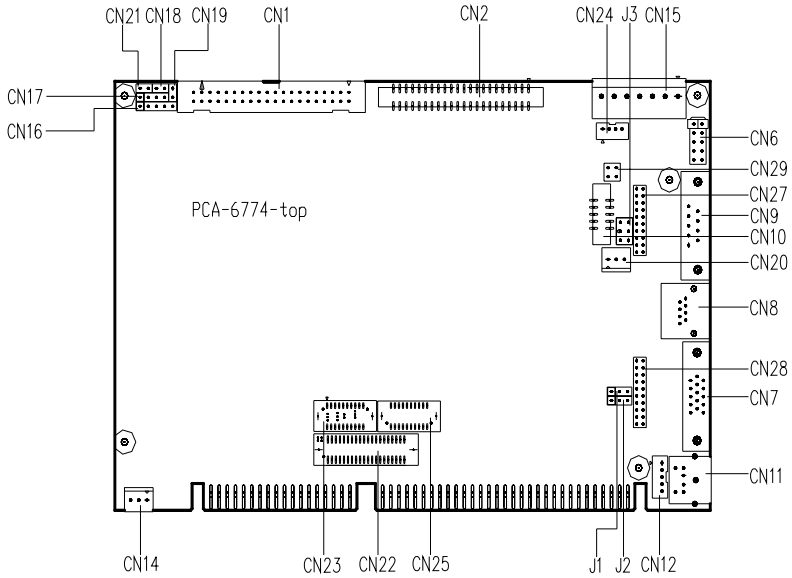


Figure 2.1: Jumper & Connector locations

2.4 Locating Connectors (solder side)

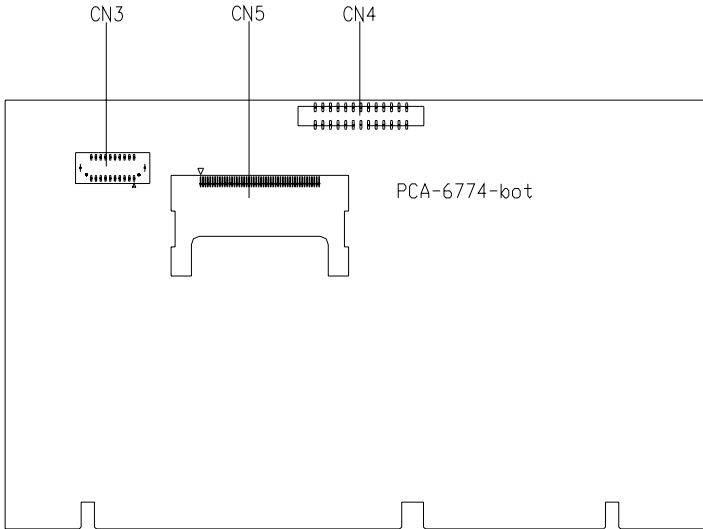
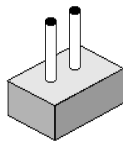


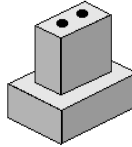
Figure 2.2: Connectors (solder side)

2.5 Setting Jumpers

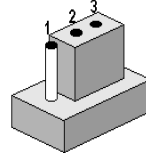
You may configure your card to match the needs of your application by setting jumpers. A jumper is a metal bridge used to close an electric circuit. It consists of two metal pins and a small metal clip (often protected by a plastic cover) that slides over the pins to connect them. To “close” a jumper, you connect the pins with the clip. To “open” a jumper, you remove the clip. Sometimes a jumper will have three pins, labeled 1, 2 and 3. In this case you would connect either pins 1 and 2, or 2 and 3.



open

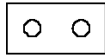


closed



closed 2-3

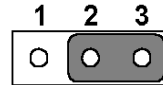
The jumper settings are schematically depicted in this manual as follows:



open



closed



closed 2-3

A pair of needle-nose pliers may be helpful when working with jumpers.

If you have any doubts about the best hardware configuration for your application, contact your local distributor or sales representative before you make any changes.

Generally, you simply need a standard cable to make most connections.

2.6 Clear CMOS (J1)

Warning! To avoid damaging the computer, always turn off the power supply before setting “Clear CMOS.” Before turning on the power supply, set the jumper back to “3.0 V Battery On.”

This jumper is used to erase CMOS data and reset system BIOS information.

The procedure for clearing CMOS is:

1. Turn off the system.
2. Short pin 2 and pin 3.
3. Return jumper to pins 1 and 2.
4. Turn on the system. The BIOS is now reset to its default setting.

Table 2.3: CMOS clear (J1)



* default setting

2.7 COM2 RS232-422-485 Select (J3)

Table 2.4: COM2 RS232-422-485 Select

PIN	RS232*	RS422	RS484
1-2	Closed	Open	Open
3-4	Open	Closed	Open
5-6	Open	Open	Closed

2.8 Watchdog timer configuration

An on-board watchdog timer reduces the chance of disruptions which EMP (electro-magnetic pulse) interference can cause. This is an invaluable protective device for standalone or unmanned applications. Setup involves one jumper and running the control software (refer to Appendix A).

2.8.1 Watchdog timer output option (J2)

When the watchdog timer activates (CPU processing has come to a halt), it can reset the system or generate an interrupt on IRQ11. This can be set via setting J2 as shown below:

Table 2.5: Watchdog timer output option (J2)



* default setting

2.9 Installing DIMMs

The procedure for installing DIMMs is described below. Please follow these steps carefully. The number of pins are different on either side of the breaks, so the module can only fit in one way. DIMM modules have different pin contacts on each side, and therefore have a higher pin density.

1. Make sure that the two handles of the DIMM socket are in the “open” position. i.e. The handles remain leaning outward.
2. Slowly slide the DIMM module along the plastic guides on both ends of the socket.
3. Press the DIMM module right down into the socket, until you hear a click. This is when the two handles have automatically locked the memory module into the correct position of the socket.

To **remove** the memory module, just push both handles outward, and the module will be ejected from the socket.

2.10 ATX power control connector (CN20,CN21)

2.10.1 ATX feature connector (CN20) and soft-on power button connector (CN21)

The PCA-6774 can support an advanced soft power switch function, if an ATX power supply is used. To enable the soft power switch function:

1. Get the specially designed ATX-to-EBX power cable (PCA-6774 optional item, Part No. 1703200100)
2. Connect the 3-pin plug of the cable to CN20 (ATX feature connector).
3. Connect the power on/off button to CN21. (A momentary type of button should be used.)

Important *Make sure that the ATX power supply can take at least a 10 mA load on the 5 V standby lead (5VSB). If not, you may have difficulty powering on your system.*

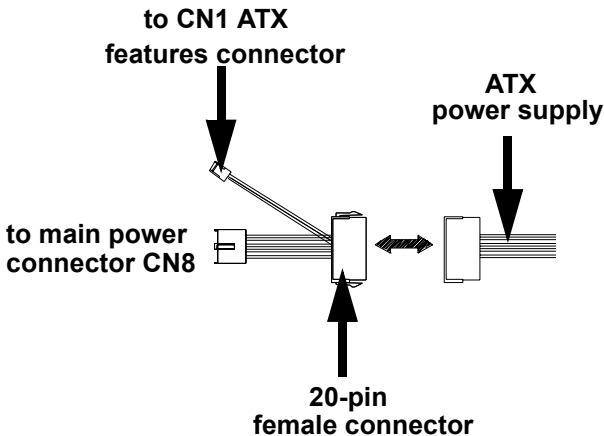


Figure 2.3: Wiring for ATX soft power switch function

2.11 Printer port connector (CN4)

Normally, the parallel port is used to connect the card to a printer. The PCA-6774 includes a multi-mode (ECP/EPP/SPP) parallel port accessed via CN4 and a 26-pin flat-cable connector. You will need an adapter cable if you use a traditional DB-25 connector. The adapter cable has a 26-pin connector on one end, and a DB-25 connector on the other.

The parallel port is designated as LPT1, and can be disabled or changed to LPT2 or LPT3 in the system BIOS setup.

The parallel port interrupt channel is designated to be IRQ7.

You can select ECP/EPP DMA channel via BIOS setup.

2.12 CompactFlash Socket

The PCA-6774 provides a 50-pin socket for CompactFlash card type I/II.

2.12.1 CompactFlash (CN5)

The CompactFlash card shares a secondary IDE channel which can be enabled/disabled via the BIOS settings.

2.13 Floppy drive connector (CN3)

You can attach up to two floppy drives to the PCA-6774's on-board controller. You can use any combination of 5.25" (360 KB and 1.2 MB) and/or 3.5" (720 KB, 1.44 MB, and 2.88 MB) drives.

A 20-pin daisy-chain drive connector cable is required for a dual-drive system. On one end of the cable is a 20-pin flat-cable connector. On the other end are two sets of floppy disk drive connectors. Each set consists of a 34-pin flat-cable connector (usually used for 3.5" drives) and a printed-circuit board connector (usually used for 5.25" drives).

2.13.1 Connecting the floppy drive

1. Plug the 20-pin flat-cable connector into CN3. Make sure that the red wire corresponds to pin one on the connector.
2. Attach the appropriate connector on the other end of the cable to the floppy drive(s). You can use only one connector in the set. The

set on the end (after the twist in the cable) connects to the A: drive. The set in the middle connects to the B: drive.

3. If you are connecting a 5.25" floppy drive, line up the slot in the printed circuit board with the blocked-off part of the cable connector.

If you are connecting a 3.5" floppy drive, you may have trouble determining which pin is number one. Look for a number printed on the circuit board indicating pin number one. In addition, the connector on the floppy drive may have a slot. When the slot is up, pin number one should be on the right. Check the documentation that came with the drive for more information.

If you desire, connect the B: drive to the connectors in the middle of the cable as described above.

In case you need to make your own cable, you can find the pin assignments for the board's connector in Appendix B.

2.14 IDE connector (CN1,CN2)

The PCA-6774 provides an IDE channel to which you can attach up to two Enhanced Integrated Device Electronics hard disk drives or CDROM to the PCA-6774's internal controller. The PCA-6774's IDE controller uses a PCI interface. This advanced IDE controller supports faster data transfer, PIO Mode 3 or Mode 4, UDMA 33/66/100 mode.

2.14.1 Connecting the hard drive

Connecting drives is done in a daisy-chain fashion. It requires one of two cables (not included in this package), depending on the drive size. 1.8" and 2.5" drives need a 1 x 44-pin to 2 x 44-pin flat-cable connector. 3.5" drives use a 1 x 44-pin to 2 x 40-pin connector.

Wire number 1 on the cable is red or blue, and the other wires are gray.

1. Connect one end of the cable to CN1, CN2. Make sure that the red (or blue) wire corresponds to pin 1 on the connector, which is labeled on the board (on the right side).
2. Plug the other end of the cable into the Enhanced IDE hard drive, with pin 1 on the cable corresponding to pin 1 on the hard drive. (See your hard drive's documentation for the location of the connector.)

If desired, connect a second drive as described above.

Unlike floppy drives, IDE hard drives can connect to either end of the cable. If you install two drives, you will need to set one as the master and one as the slave by using jumpers on the drives. If you install only one drive, set it as the master.

2.15 VGA/LCD interface connections

The PCA-6774's display interface can drive conventional CRT displays and is capable of driving a wide range of flat panel displays as well, including passive LCD and active LCD displays. The board has two display connectors: one for standard CRT VGA monitors, and one for flat panel displays.

2.15.1 CRT display connector (CN7)

CN7 is a standard 15-pin D-SUB connector commonly used for VGA.

Pin assignments for CRT display connector CN7 are detailed in Appendix B.

2.15.2 Flat panel display connector (CN22)

CN22 consists of a 40-pin connector which can support an 18-bit LCD panel. It is Hirose's product no. DF13A-40DP-1.25 V.

The PCA-6774 provides a bias control signal on CN22 that can be used to control the LCD bias voltage. It is recommended that the LCD bias voltage not be applied to the panel until the logic supply voltage (+5 V or +3.3 V) and panel video signals are stable. Under normal operation, the control signal (ENAVEE) is active high. When the PCA-6774's power is applied, the control signal is low until just after the relevant flat panel signals are present. CN22 can connect up to 18-bit TFT LCD.

2.15.3 Extension flat panel connector (CN23)

CN23 consists of a 20-pin connector which is Hirose's product no. DF13-20DP-1.25V. The PCA-6774 supports a 36-bit LCD panel which must be connected to both the CN22 (40-pin) and CN23 (20-pin). The pin assignments for both CN22 and CN23 can be found in Appendix B.

2.15.4 LVDS LCD panel connector (CN25)

The PCA-6774 uses the VIA "Twister T" chip that supports 2 channel LVDS LCD panel displays. Users can connect to LVDS LCD with CN25.

2.15.5 Panel type selection (SW1)

SW1 is an 8 segment DIP switch for DSTN/TFT panel type and resolution functions

Table 2.6: S1 Panel Type Select (SW1)

SW 1-1	SW 1-2	SW 1-3	SW 1-4	Panel Type & Resolution		
ON	ON	ON	ON	TFT	640x480**	18bit (H. V. Freq)
ON	ON	ON	OFF	TFT	640x480	18bit (Synthetic)
ON	ON	OFF	ON	TFT	640x480**	N/A
ON	ON	OFF	OFF	TFT	640x480**	LVDS
ON	OFF	ON	ON	DSTN	640x480**	18bit
ON	OFF	ON	OFF	TFT	800x600**	18bit (H. V. Freq)
ON	OFF	OFF	ON	TFT	800x600	18bit (Synthetic)
ON	OFF	OFF	OFF	TFT	800x600**	LVDS
OFF	ON	ON	ON	TFT	800x600**	N/A
OFF	ON	ON	OFF	DSTN	800x600**	18bit
OFF	ON	OFF	ON	TFT	1024x768*	36bit (H. V. Freq)
OFF	ON	OFF	OFF	TFT	1024x768*	36bit (Synthetic)
OFF	OFF	ON	ON	TFT	1024x768*	LVDS
OFF	OFF	ON	OFF	TFT	1024x768*	N/A
OFF	OFF	OFF	ON	DSTN	1024x768*	18bit
OFF	OFF	OFF	OFF	DSTN	1024x768*	24bit

* Default setting

** will support in the future

2.16 USB connectors (CN6)

The PCA-6774 board provides up to two USB (Universal Serial Bus) ports. This gives complete Plug and Play, and hot attach/detach for up to

127 external devices. The USB interfaces comply with USB specification Rev. 1.1, and are fuse protected.

The USB interface is accessed through the 5 x 2-pin flat-cable connector, CN6 (USB1, 2). You will need an adapter cable if you use a standard USB connector. The adapter cable has a 5 x 2-pin connector on one end and a USB connector on the other.

The USB interfaces can be disabled in the system BIOS setup.

2.17 Ethernet configuration

The PCA-6774 is equipped with a high performance 32-bit PCI-bus Ethernet interface which is fully compliant with IEEE 802.3u 10/100Mbps CSMA/CD standards. It is supported by all major network operating systems.

The PCA-6774 supports 10/100Mbps Ethernet connections with onboard RJ-45 connectors (CN8).

2.17.1 100Base-T connector (CN8)

10/100Base-T connects to the PCA-6774 via an adapter cable to an 8-pin polarized header (CN8).

2.17.2 Network boot

The Network Boot feature can be utilized by incorporating the Boot ROM image files for the appropriate network operating system. The Boot ROM BIOS files are included in the system BIOS, which is on the utility CD disc.

2.18 Power connectors (CN14, CN15)

2.18.1 Main power connector, +5 V, +12 V (CN15)

Supplies main power to the PCA-6774 (+5 V), and to devices that require +12 V.

2.18.2 CPU Fan power supply connector (CN14)

Provides power supply to CPU cooling fan. Only present when +12 V power is supplied to the board.

2.19 ATX Power & HDD LED, speaker out Connector (CN16, CN17, CN19)

Next, you may want to install external switches to monitor and control the PCA-6774. These features are optional: install them only if you need them. CN16, CN17, CN19 integrated in one connector, which is an 5 x 3 pin header, 180degree, male. It provides connections for a speaker, hard disk access indicator.

2.19.1 HDD LED (CN19)

The HDD LED indicator for hard disk access is an active low signal (24mA sink rate).

2.19.2 ATX power LED & KB-LOCK (CN16)

Power supply activity LED indicator and KB_lock function.

2.19.3 Speaker out (CN17)

Support a buzzer function, pin assignment refer to Appendix B.

2.20 COM port connector (CN9,CN10,CN29)

The PCA-6774 provides two serial ports (COM1: RS232 and COM2: RS422/485) in one COM port connector. It provides connections for serial devices (a mouse, etc.) or a communication network. You can find the pin assignments for the COM port connector in Appendix B.

2.21 Keyboard and PS/2 mouse connector (CN11)

The PCA-6774 board provides a keyboard connector that supports both a keyboard and a PS/2 style mouse. In most cases, especially in embedded applications, a keyboard is not used. If the keyboard is not present, the standard PC/AT BIOS will report an error or fail during power-on self-test (POST) after a reset. The PCA-6774's BIOS standard setup menu allows you to select "All, But Keyboard" under the "Halt On" selection. This allows no-keyboard operation in embedded system applications, without the system halting under POST.

2.22 External KB/mouse connector (CN12)

In addition to the PS/2 mouse/keyboard connector on the PCA-6774's rear plate, there is an additional onboard external keyboard connector, allowing for greater flexibility in system design.

2.23 Watchdog output (CN18)

It provides connection for watchdog output, detailed pin assignment refer to Appendix B.

2.24 Daughter card connector (CN27,CN28)

CN27, CN28 are 20-pin 180degree female connectors. With daughter board, PCA-6774 can support 2 LAN and 4 USB ports. Detailed pin definition you will find in Appendix B.

Software Configuration

This chapter details the software configuration information. It shows you how to configure the card to match your application requirements. Award System BIOS will be covered in Chapter 4.

Sections include:

- Introduction
- VGA display software configuration

Chapter 3 Software Configuration

3.1 Introduction

The system BIOS and custom drivers are located in a 256 KB, 32-pin (JEDEC spec.) Flash ROM device, designated U10. A single Flash chip holds the system BIOS, VGA BIOS, and network Boot ROM image. The display can be configured via software. This method minimizes the number of chips and eases configuration. You can change the display BIOS simply by reprogramming the Flash chip.

3.2 VGA display firmware configuration

The board's on-board VGA interface supports a wide range of popular LCD, EL, gas plasma flat panel displays and traditional analog CRT monitors. The optimized shared memory architecture supports an 8/16/32 MB frame buffer using system memory to provide resolutions of 1280 x 1024 @ 16 bpp, the interface can drive CRT displays with resolutions up to 1024 x 768 @ 16 bpp and 800 x 600 @ 16 bpp.

The VGA interface is configured completely via the software utility, so you do not have to set any jumpers. Configure the VGA display as follows:

1. Apply power to the board with a color TFT display attached. This is the default setting for this board. Ensure that the AWD-FLASH.EXE and *.BIN files are located in the working drive.

NOTE: *Ensure that you do not run AWDFLASH.EXE while your system is operating in EMM386 mode.*

2. At the prompt, type AWDFLASH.EXE and press <Enter>. The VGA configuration program will then display the following:

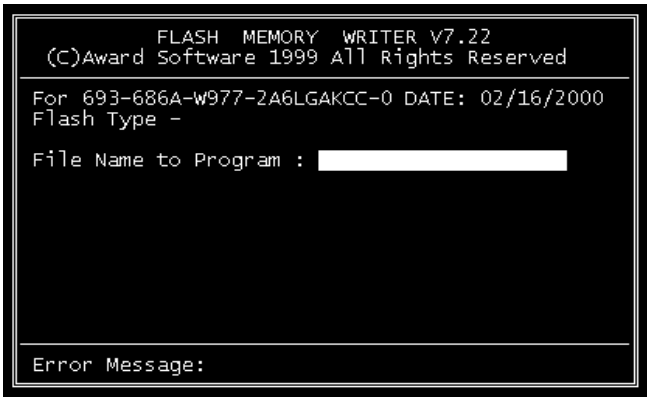


Figure 3.1: VGA setup screen

3. At the prompt, enter the new BIN file which supports your display. When you are sure that you have entered the file name correctly press <Enter>.
4. The screen will ask if you want to save BIOS? If you change your mind or have made a mistake, press N to abort and end the setup procedure. Press Y if you wish to save the existing configuration before changing it. Then type the name under which you want to save the current configuration.
5. The prompt will then ask “Are you sure”, Press Y if you want the new file to be written into the BIOS. Press N to exit the program. The new VGA configuration will then write to the ROM BIOS chip. This configuration will remain the same until you run the AWDFLASH.EXE program and change the settings.

CHAPTER 4

Award BIOS Setup

This chapter describes how to set BIOS configuration data.

Chapter 4 Award BIOS Setup

4.1 System test and initialization

These routines test and initialize board hardware. If the routines encounter an error during the tests, you will either hear a few short beeps or see an error message on the screen. There are two kinds of errors: fatal and non-fatal. The system can usually continue the boot up sequence with non-fatal errors. Non-fatal error messages usually appear on the screen along with the following instructions:

press <F1> to RESUME

Write down the message and press the F1 key to continue the boot up sequence.

4.1.1 System configuration verification

These routines check the current system configuration against the values stored in the board's CMOS memory. If they do not match, the program outputs an error message. You will then need to run the BIOS setup program to set the configuration information in memory.

There are three situations in which you will need to change the CMOS settings:

1. You are starting your system for the first time
2. You have changed the hardware attached to your system
3. The CMOS memory has lost power and the configuration information has been erased.

The PCA-6774 Series' CMOS memory has an integral lithium battery backup. The battery backup should last ten years in normal service, but when it finally runs down, you will need to replace the complete unit.

4.2 Award BIOS setup

Award's BIOS ROM has a built-in Setup program that allows users to modify the basic system configuration. This type of information is stored in battery-backed CMOS RAM so that it retains the Setup information when the power is turned off.

4.2.1 Entering setup

Power on the computer and press immediately. This will allow you to enter Setup.

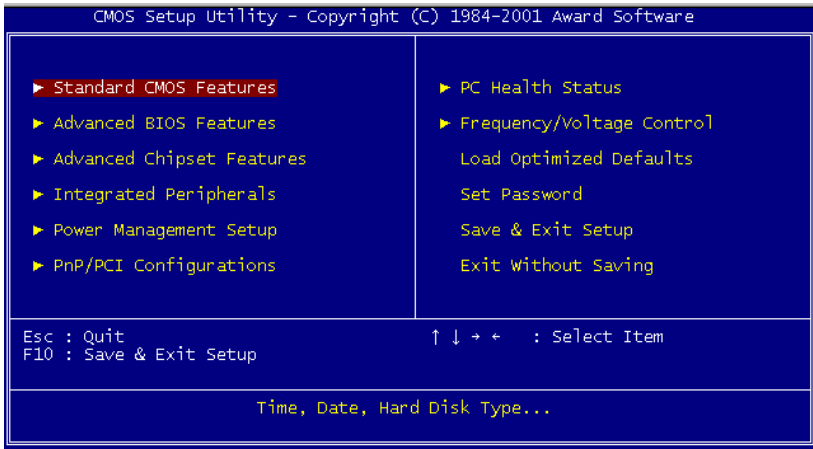


Figure 4.1: BIOS setup program initial screen

4.2.2 Standard CMOS Features setup

When you choose the Standard CMOS Features option from the Initial Setup Screen menu, the screen shown below is displayed. This standard Setup Menu allows users to configure system components such as date, time, hard disk drive, floppy drive and display. Once a field is highlighted, on-line help information is displayed in the left bottom of the Menu screen.

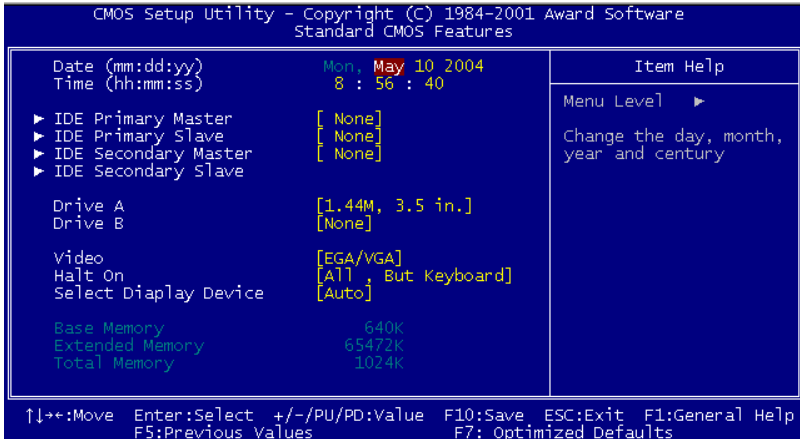


Figure 4.2: CMOS Features setup

4.2.3 Advanced BIOS Features setup

By choosing the Advanced BIOS Features Setup option from the Initial Setup Screen menu, the screen below is displayed. This sample screen contains the manufacturer's default values for the PCA-6774 Series.

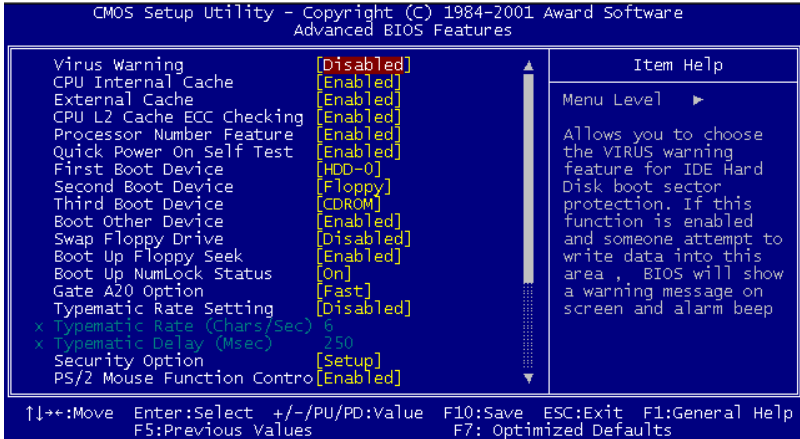


Figure 4.3: Advanced BIOS Features setup

4.2.4 Advanced Chipset Features setup

By choosing the Advanced Chipset Features option from the Initial Setup Screen menu, the screen below is displayed. This sample screen contains the manufacturer's default values for the PCA-6774 Series.

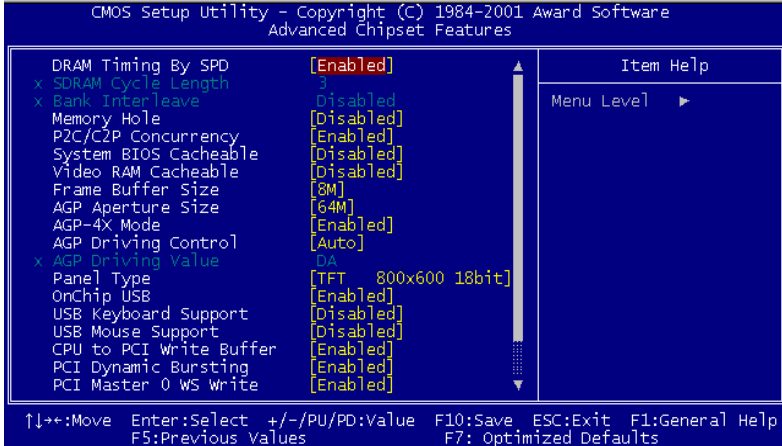


Figure 4.4: Advanced Chipset Features setup

4.2.5 Integrated Peripherals

Choosing the Integrated Peripherals option from the Initial Setup Screen menu should produce the screen below. Here we see the manufacturer's default values for the PCA-6774 Series.

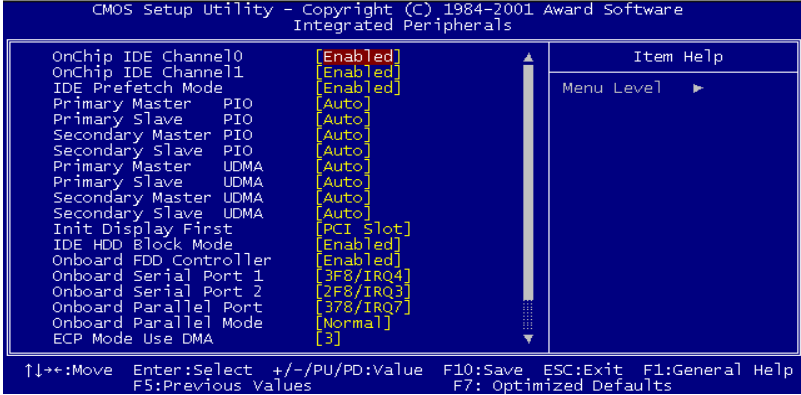


Figure 4.5: Integrated Peripherals

4.2.6 Power Management Setup

By choosing the Power Management Setup option from the Initial Setup Screen menu, the screen below is displayed. This sample screen contains the manufacturer's default values for the PCA-6774 Series.

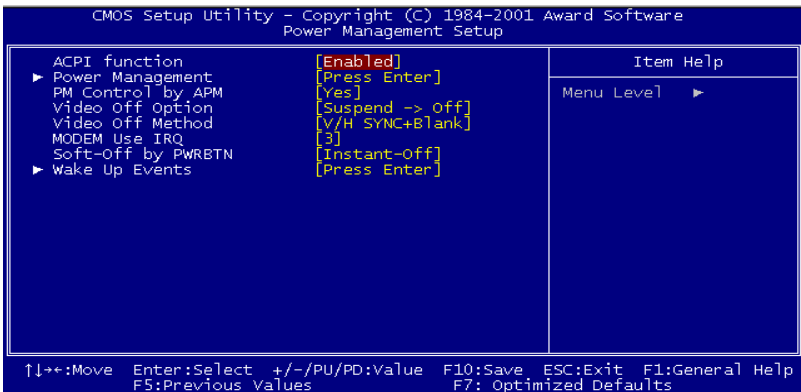


Figure 4.6: Power Management Setup

4.2.7 PnP/PCI Configurations

By choosing the PnP/PCI Configurations option from the Initial Setup Screen menu, the screen below is displayed. This sample screen contains the manufacturer's default values for the PCA-6774 Series.

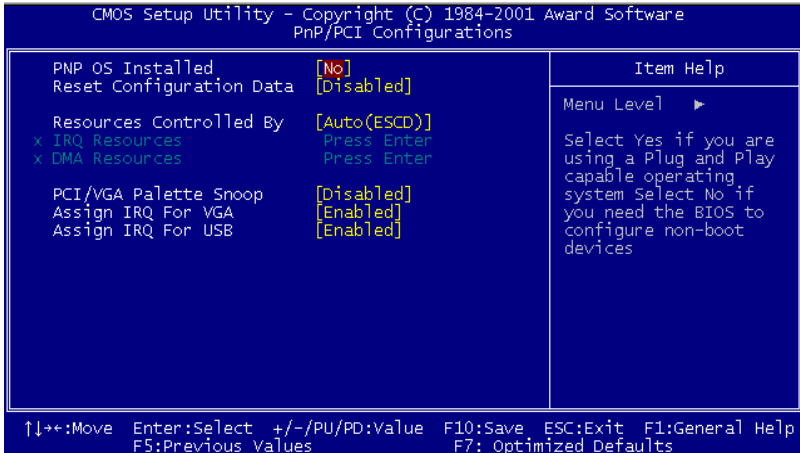


Figure 4.7: PnP/PCI Configurations

4.2.8 PC Health Status

The PC Health Status option displays information such as CPU and motherboard temperatures, fan speeds, and core voltage.

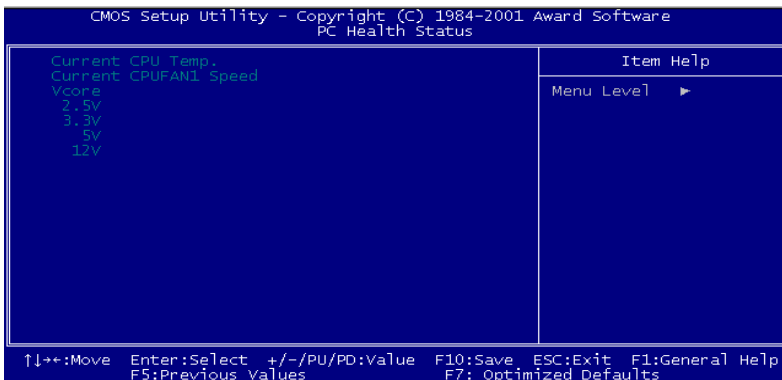


Figure 4.8: PC Health Status

4.2.9 Frequency/Voltage Control

By choosing the Frequency/Voltage Control option from the Initial Setup Screen menu, the screen below is displayed. This sample screen contains the manufacturer's default values for the PCA-6774

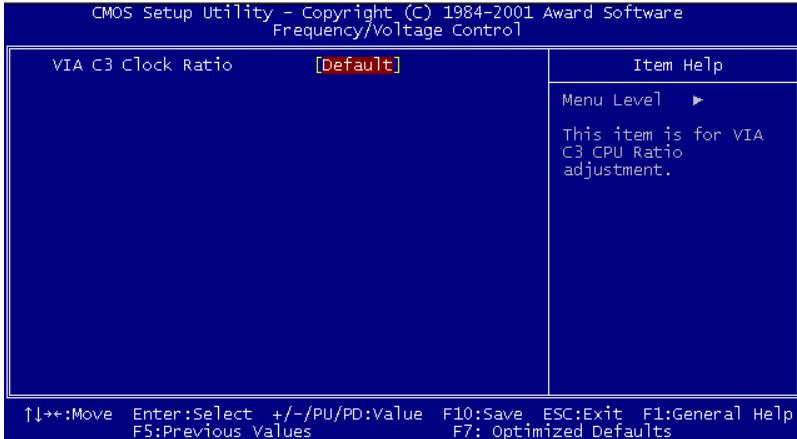


Figure 4.9: Frequency/Voltage Control

Caution *Incorrect settings in Frequency/Voltage Control may damage the system CPU, video adapter, or other hardware.*

4.2.10 Load Optimized Defaults

Load Optimized Defaults loads the default system values directly from ROM. If the stored record created by the Setup program should ever become corrupted (and therefore unusable), these defaults will load automatically when you turn the PCA-6774 Series system on.

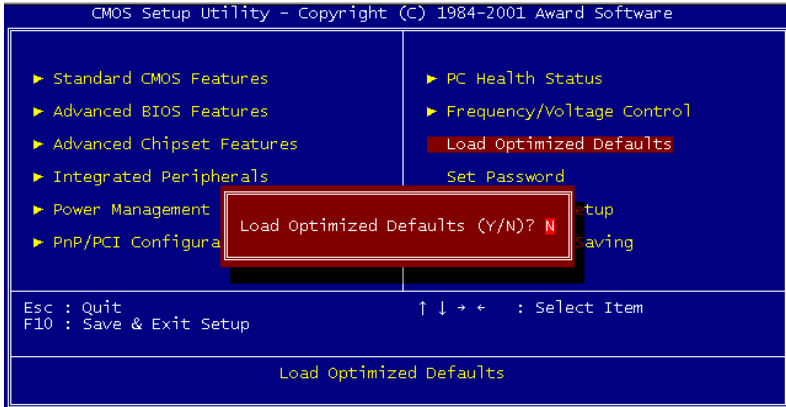


Figure 4.10: Load BIOS defaults screen

4.2.11 Set Password

Note *To enable this feature, you should first go to the Advanced BIOS Features menu, choose the Security Option, and select either Setup or System, depending on which aspect you want password protected. Setup requires a password only to enter Setup. System requires the password either to enter Setup or to boot the system.*

A password may be at most 8 characters long.

To Establish Password

1. Choose the Set Password option from the CMOS Setup Utility main menu and press <Enter>.
2. When you see "Enter Password", enter the desired password and press <Enter>.

3. At the “Confirm Password” prompt, retype the desired password, then press <Enter>.
4. Select Save to CMOS and EXIT, type <Y>, then <Enter>.

To Change Password

1. Choose the Set Password option from the CMOS Setup Utility main menu and press <Enter>.
2. When you see “Enter Password” enter the existing password and press <Enter>.
3. You will see “Confirm Password” Type it again, and press <Enter>.
4. Select Set Password again, and at the “Enter Password” prompt, enter the new password and press <Enter>.
5. At the “Confirm Password” prompt, retype the new password, and press <Enter>.
6. Select Save to CMOS and EXIT, type <Y>, then <Enter>.

To Disable Password

1. Choose the Set Password option from the CMOS Setup Utility main menu and press <Enter>.
2. When you see “Enter Password” enter the existing password and press <Enter>.
3. You will see “Confirm Password” Type it again, and press <Enter>.
4. Select Set Password again, and at the “Enter Password” prompt, don’t enter anything; just press <Enter>.
5. At the “Confirm Password” prompt, again don’t type in anything; just press <Enter>.
6. Select Save to CMOS and EXIT, type <Y>, then <Enter>.

4.2.12 Save & Exit Setup

If you select this option and press <Y> then <Enter>, the values entered in the setup utilities will be recorded in the chipset’s CMOS memory. The microprocessor will check this every time you turn your system on and use the settings to configure the system. This record is required for the system to operate.

4.2.13 Exit Without Saving

Selecting this option and pressing <Enter> lets you exit the Setup program without recording any new values or changing old ones.

PCI SVGA Setup

Introduction

Installation of SVGA drivers

-for Windows 95/98/Me

-for Windows NT/2000/XP

Further information

Chapter 5 PCI SVGA Setup

5.1 Introduction

The board has an onboard AGP flat panel/VGA interface. The specifications and features are described as follows:

5.1.1 Chipset

The board uses a VIA VT8606 chipset from VIA Technology Inc. for its AGP/SVGA controller. It supports many popular LCD, and LVDS LCD displays and conventional analog CRT monitors. The VIA VT8606 VGA BIOS supports color TFT and DSTN LCD flat panel displays. In addition, it also supports interlaced and non-interlaced analog monitors (color and monochrome VGA) in high-resolution modes while maintaining complete IBM VGA compatibility. Digital monitors (i.e. MDA, CGA, and EGA) are NOT supported. Multiple frequency (multisync) monitors are handled if they were analog monitors.

5.1.2 Display memory

The TwisterT chip can support 8/16/32MB frame buffer shared with system memory; the VGA controller can drive CRT displays or color panel displays with resolutions up to 1280 x 1024 at 16 M colors.

5.1.3 Display types

CRT and panel displays can be used simultaneously. The board can be set in one of three configurations: on a CRT, on a flat panel display, or on both simultaneously. The system is initially set to simultaneous display mode. If you want to enable the CRT display only or the flat panel display only, please contact VIA Technology Inc., or our sales representative for detailed information.

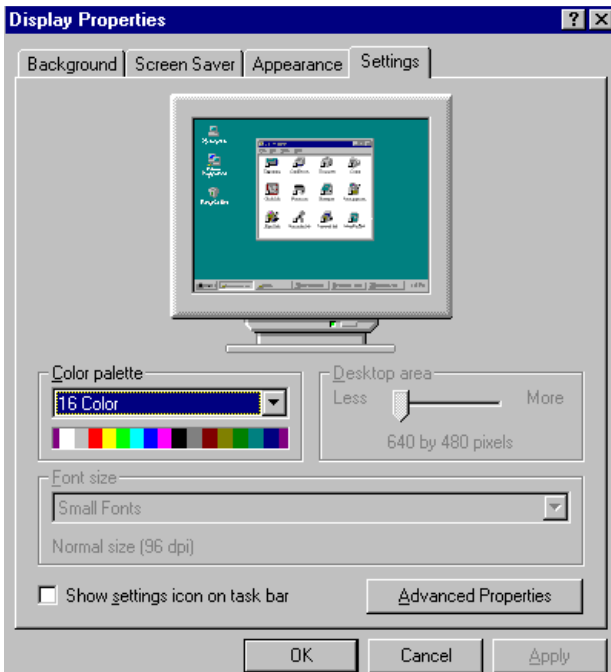
5.2 Installation of the SVGA Driver

Complete the following steps to install the SVGA driver. Follow the procedures in the flow chart that apply to the operating system that you are using within your board.

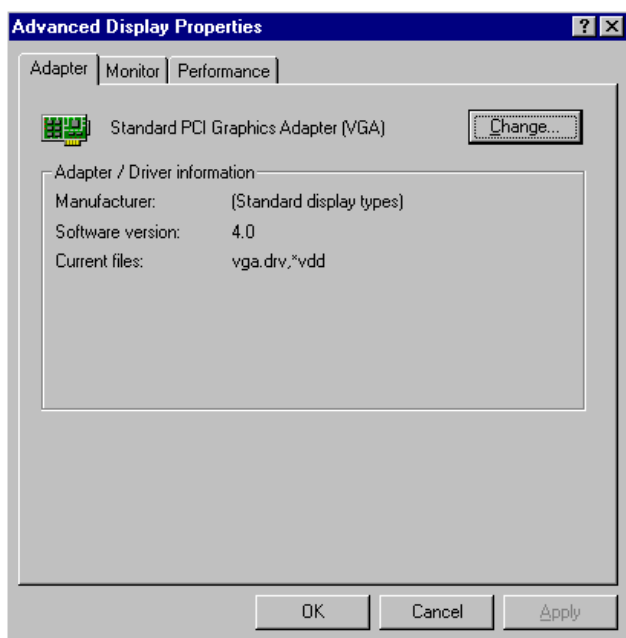
- Notes:**
1. The windows illustrations in this chapter are intended as examples only. Please follow the listed steps, and pay attention to the instructions which appear on your screen.
 2. For convenience, the CD-ROM drive is designated as "D" throughout this chapter.

5.2.1 Installation for Windows 95

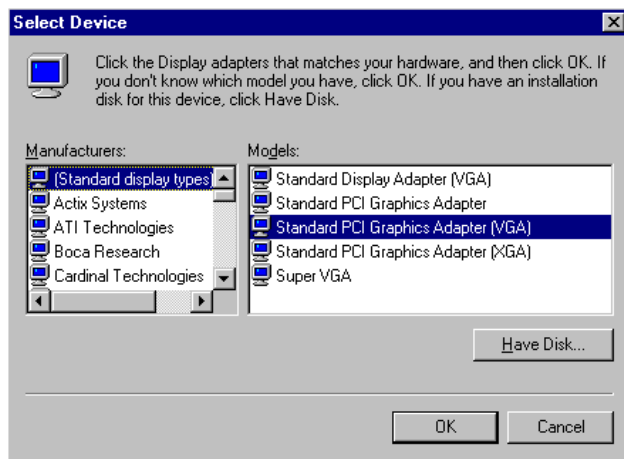
1. Select "Start", "Settings", "Control Panel", "Display", "Settings", and "Advanced Properties".



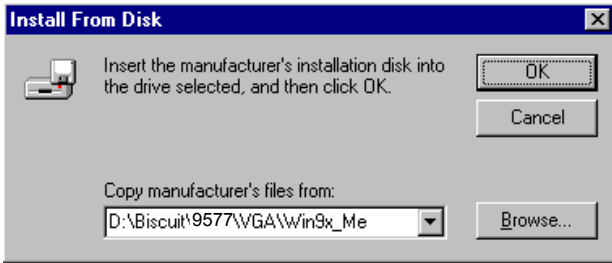
2. Choose the "Adapter" tab, then press the "Change..." button.



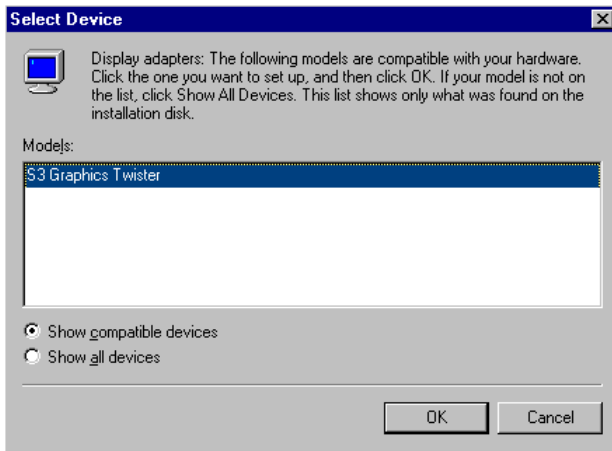
3. Press the "Have Disk" button.



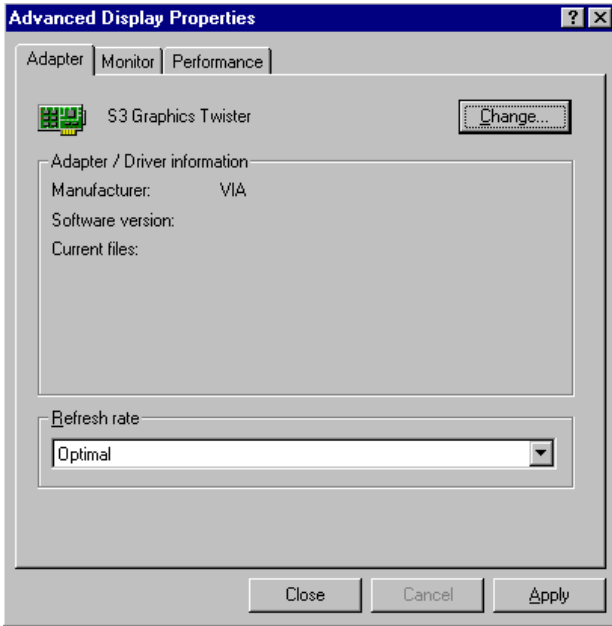
4. Type in the path:
D:\Biscuit\9577\VGA\Win9x_Me



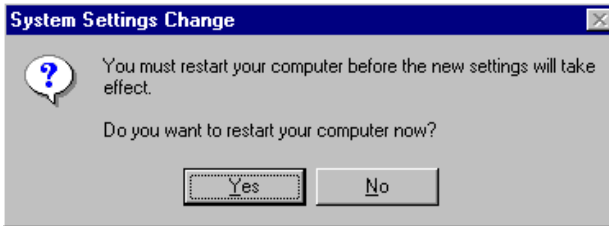
5. Select the highlighted item, and click the "OK" button.



6. "S3 GraphicsTwister" appears under the adapter tab. Click the "Apply" button, then the "OK" button.

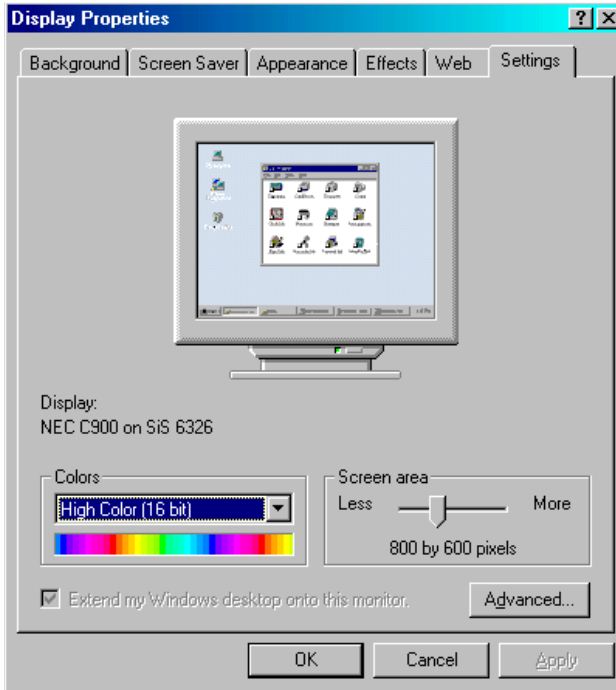


7. Press "Yes" to reboot.

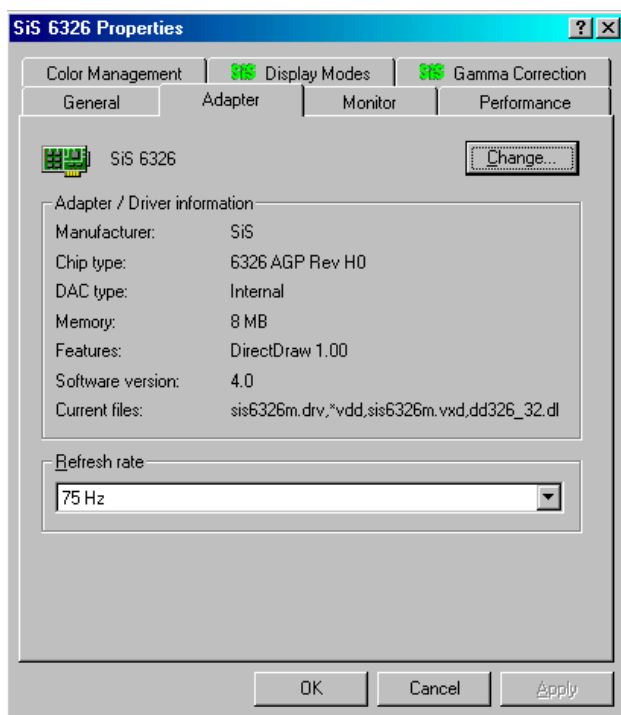


5.2.2 Installation for Windows 98/Me

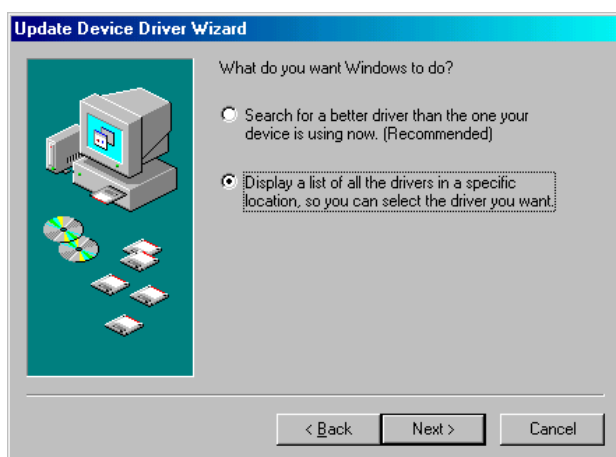
1. Select "Start", "Settings", "Control Panel", "Display", and "Settings," then press the "Advanced..." button.



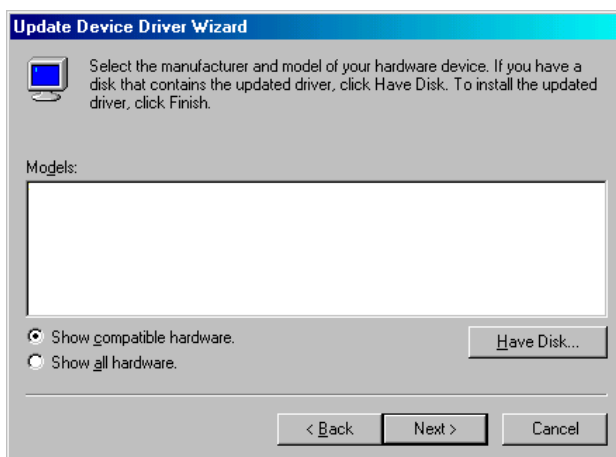
2. Select “Adapter,” then “Change.”



3. Press “Next,” then “Display a list....”



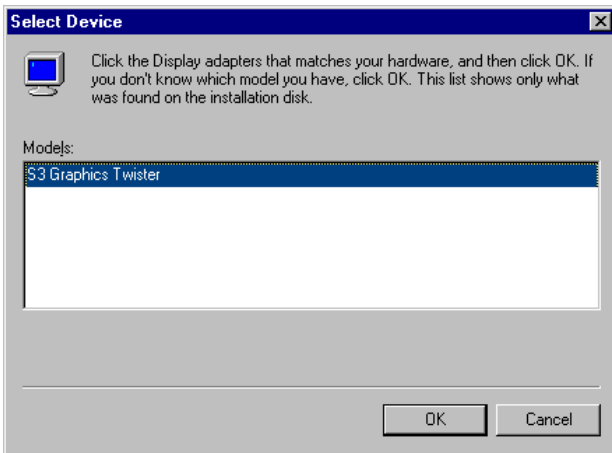
4. Press the “Have disk...” button.



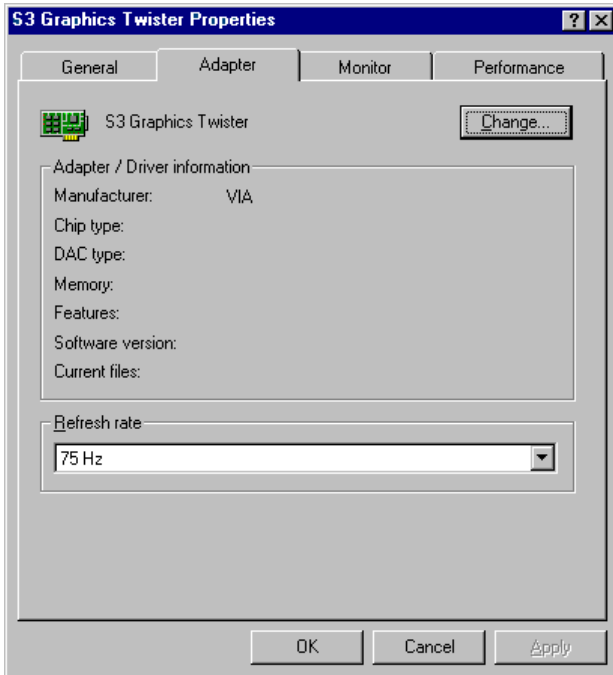
5. Insert the CD into the CD-ROM drive. Type in the path **D:\Biscuit\9577\VGA\Win9x_Me**
Then press “OK”



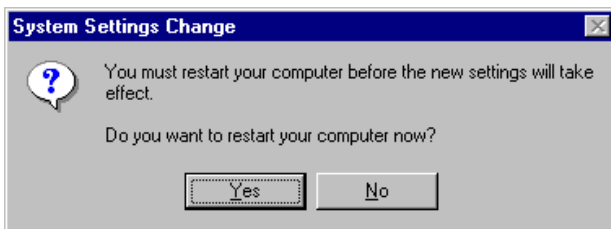
6. Select the highlighted item, then click “OK.”



7. "S3 Graphics Twister" appears under the adapter tab. Click the "Apply" button.



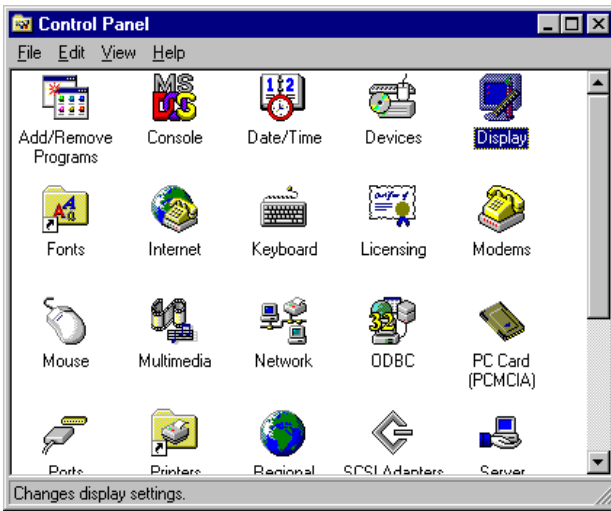
8. Press "Yes" to reboot.



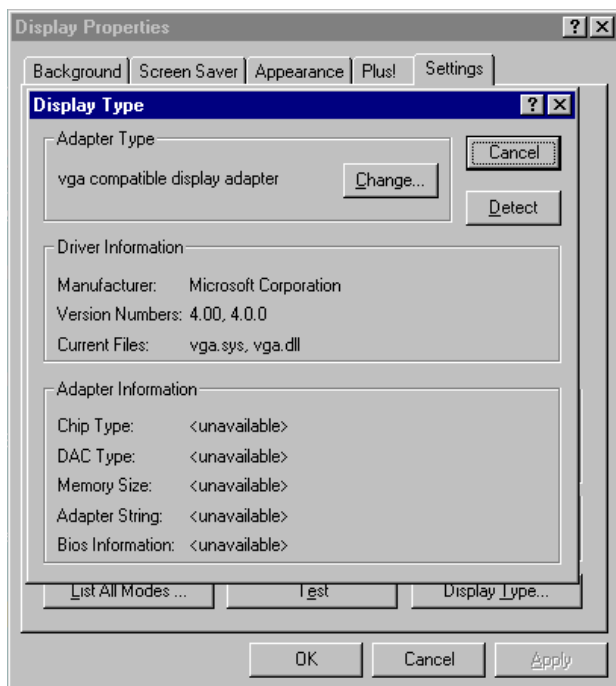
5.2.3 Installation for Windows NT

Note: Service Pack X (X = 3, 4, 5, 6,...) must be installed first, before you install the Windows NT VGA driver.

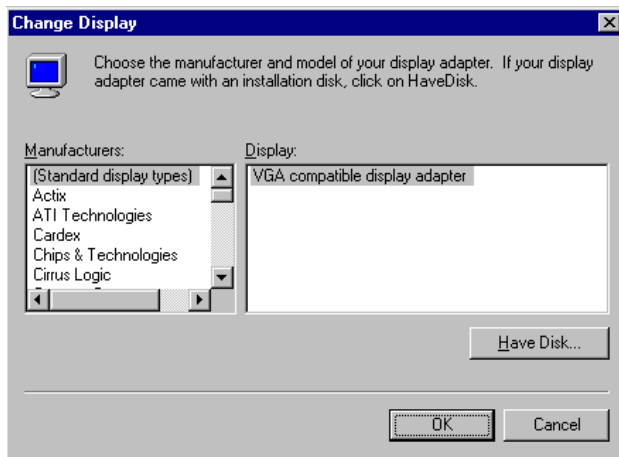
1. Select "Start", "Settings", "Control Panel" and double click the "Display" icon.



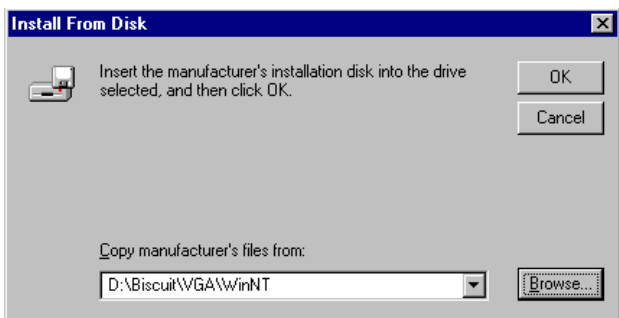
3. Press the "Change..." button.



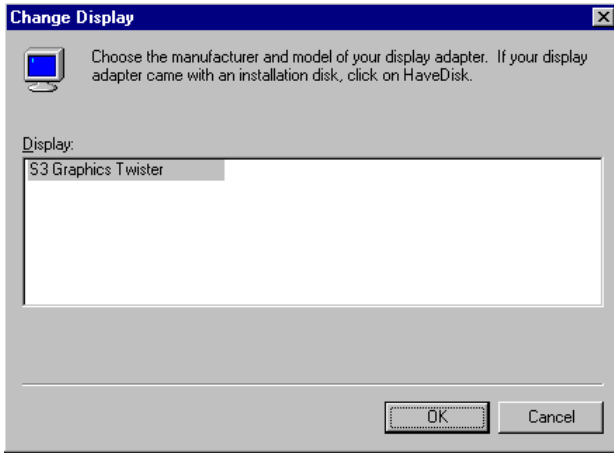
- Click the "Have Disk..." button.



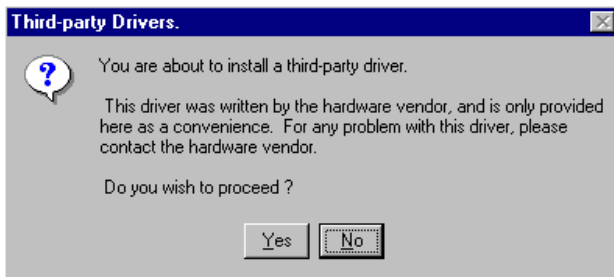
- Type the path:
D:\Biscuit\VGA\WinNT
Press the "OK" button.



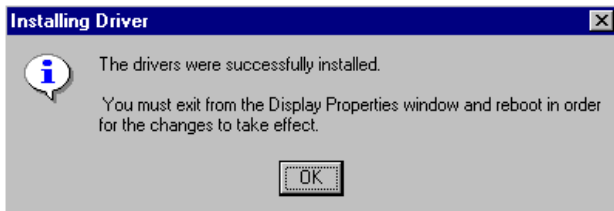
6. Select the highlighted item, and click the "OK" button.



7. Press "Yes" to proceed.

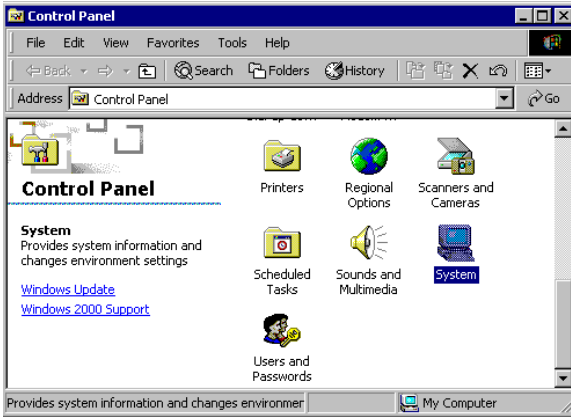


8. Press "OK" to reboot.

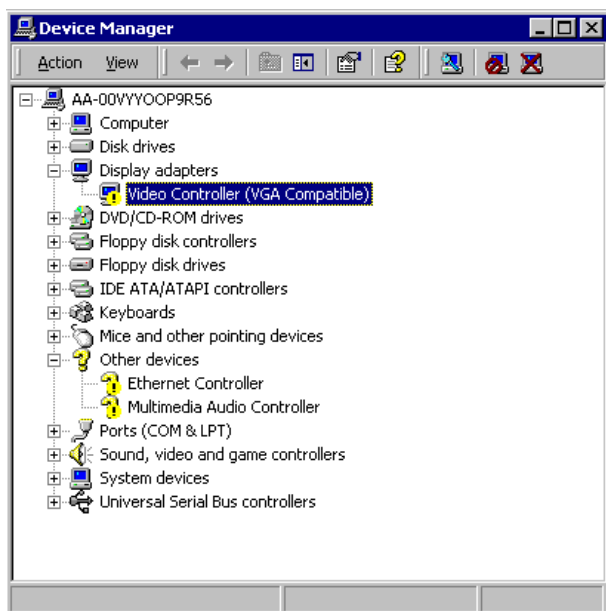


5.2.4 Installation for Windows 2000

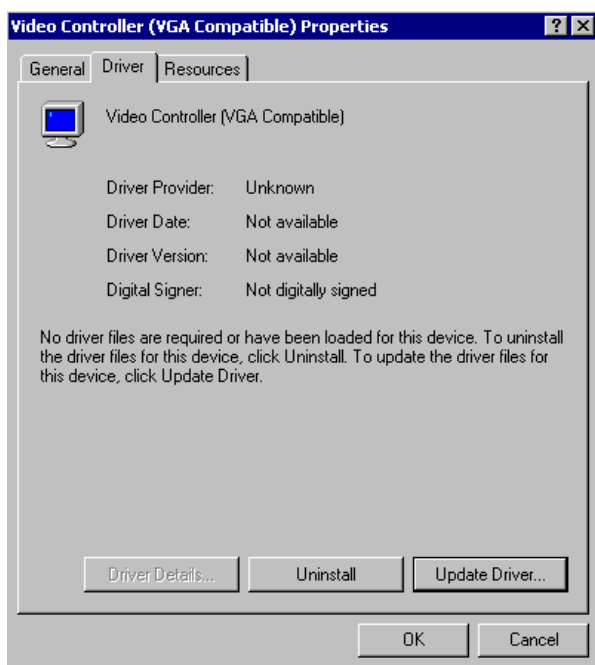
1. Select "System", "Settings", "Control Panel" and double click the "system" icon.



2. Choose the "Video Controller (VGA Compatible)" button.



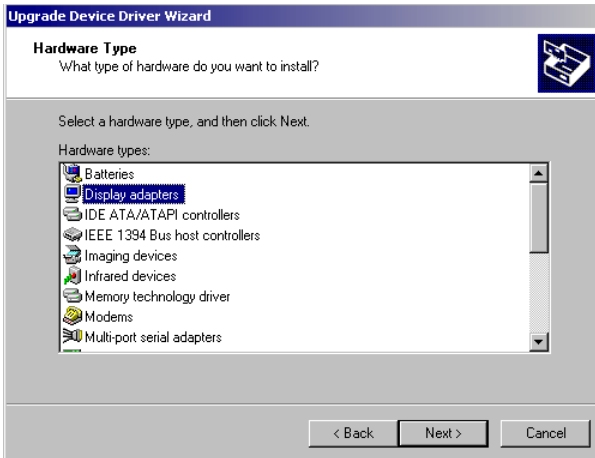
3. Choose the "Drive" button, press "Update Driver..." button.



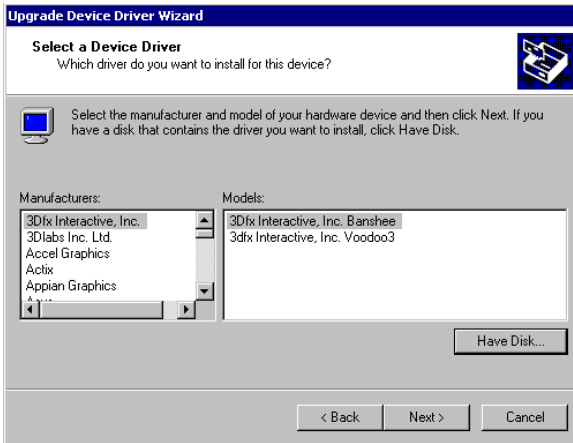
4. Choose "Display a list of...", then press "Next" button.



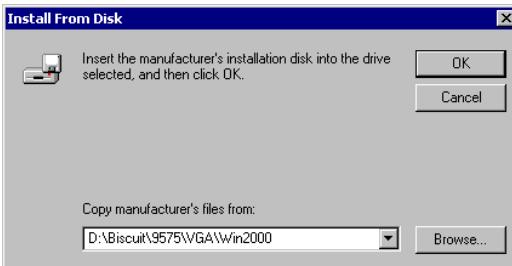
5. Choose "Display adapters", press "Next" button.



6. Click the “Have Disk” button.



7. Type the path D:\Biscuit\9577\VGA\Win2000 press the “OK” button.

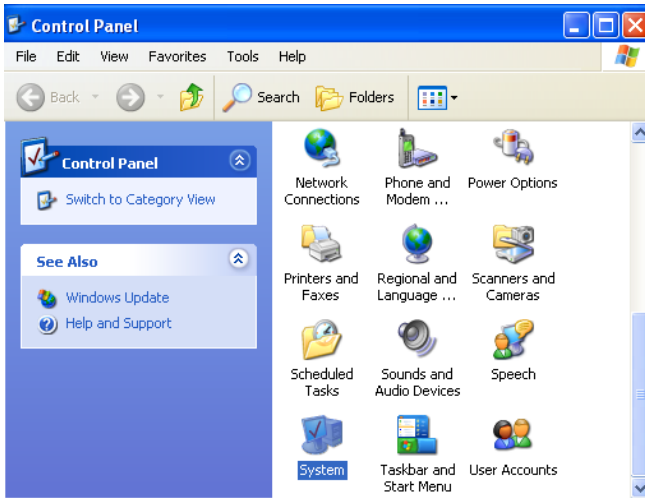


8. Press "Finish" to reboot.

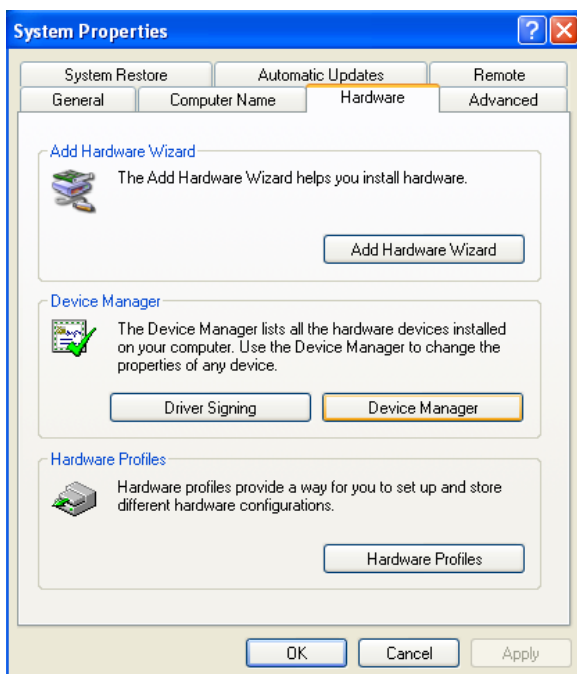


5.2.5 Installation for Windows XP

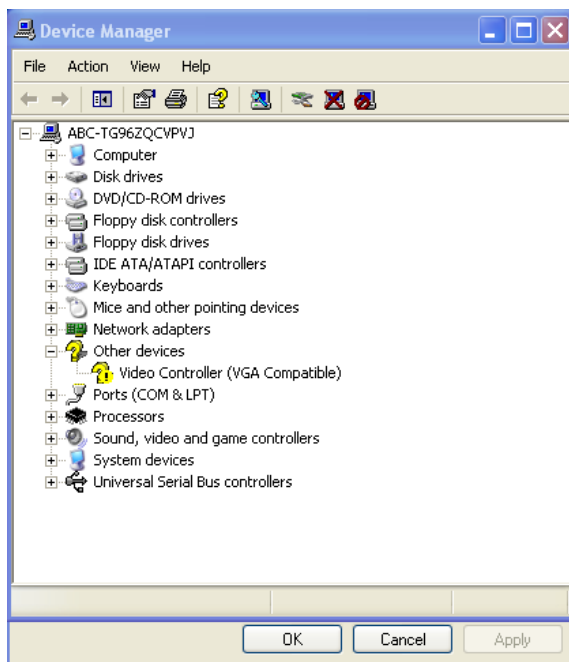
1. Select "System", "Settings", "Control Panel" and double click the "system" icon.



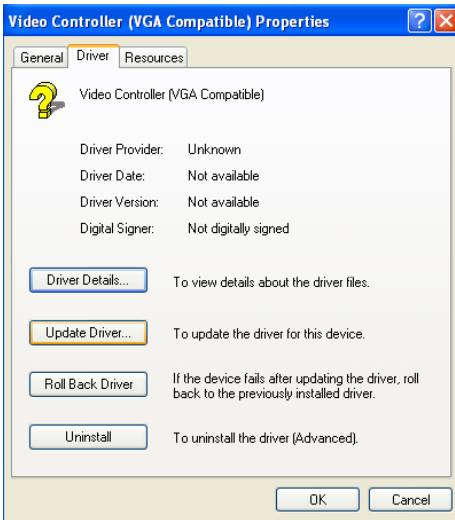
2. Choose “Hardware” and “Device Manager”, press “OK” button.



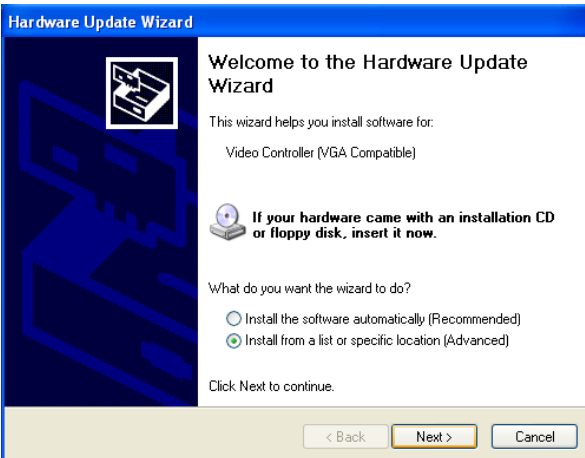
3. Choose “Video Controller (VGA Compatible), press “OK” button.



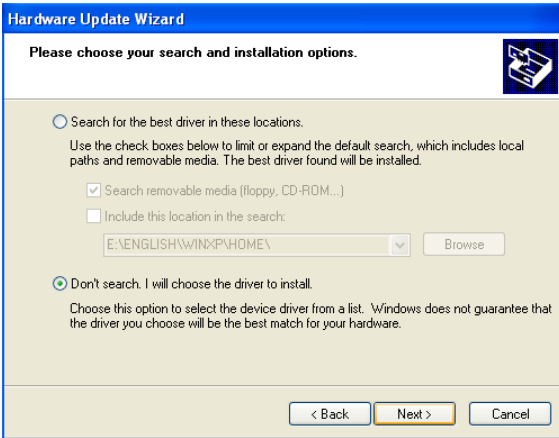
4. Choose "Driver", "Update Driver", press "OK" button.



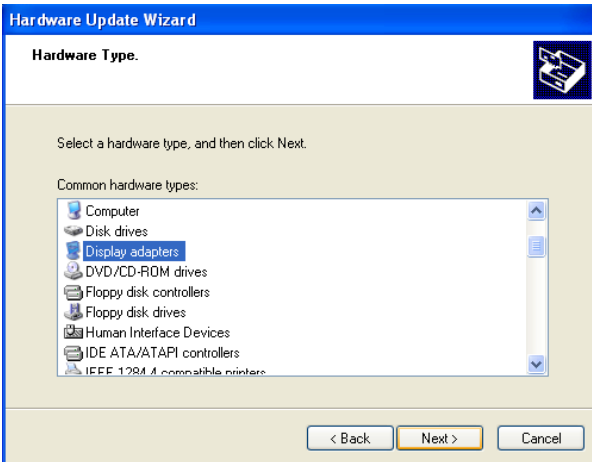
5. Choose "Install from a list.....", press "Next".



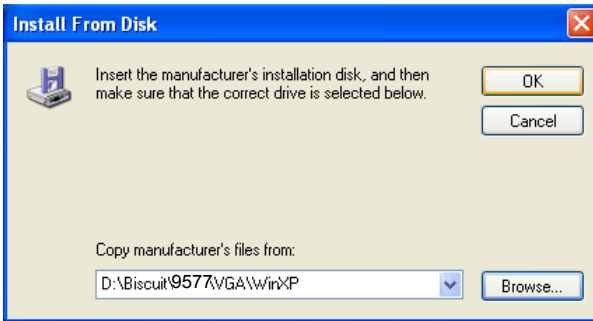
6. Choose “Don’t search. I will....”, press “Next” button.



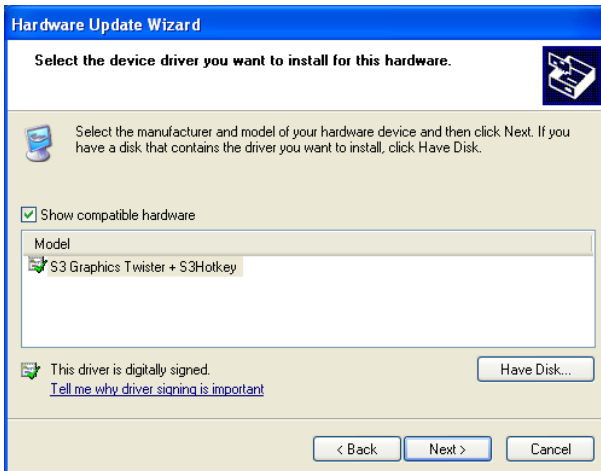
7. Choose “Display adapters”, press “Next” button.



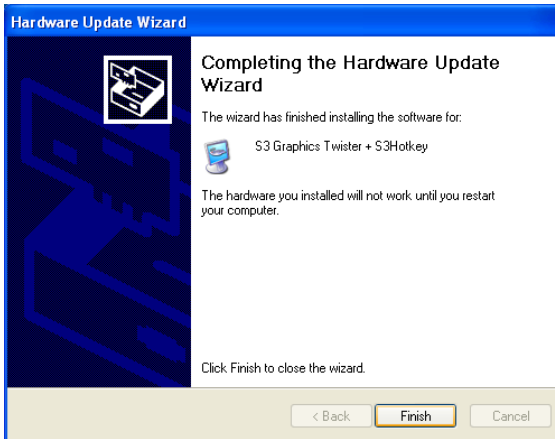
8. Type the path D:\Biscuit\9577\VGA\WinXP then press “OK” button.



9. Choose “S3 Graphics Twister + S3 Hotkey” then press “Next” button.



10. Press "Finish" to reboot.



5.3 Further Information

For further information about the AGP/VGA installation in your PCA-6774, including driver updates, troubleshooting guides and FAQ lists, visit the following web resources:

VIA website: www.via.com.tw

Advantech websites: www.advantech.com
www.advantech.com.tw

PCI Bus Ethernet Interface

This chapter provides information on Ethernet configuration.

- Introduction
- Installation of Ethernet drivers for Windows 98/2000/NT
- Further information

Chapter 6 PCI Bus Ethernet Interface

6.1 Introduction

The board is equipped with a high performance 32-bit Ethernet chipset which is fully compliant with 802.3u 100BASE-T \Fast Ethernet CSMA/CD standards (F version) and compliant IEEE 802.3z/ab 1000BAS-T Gigabit Ethernet (FG version). It is supported by major network operating systems. It is also both 100Base-T and 10Base-T compatible.

The Ethernet port provides a standard RJ-45 jack. The network boot feature can be utilized by incorporating the boot ROM image files for the appropriate network operating system. The boot ROM BIOS files are combined with system BIOS, which can be enabled/disabled in the BIOS setup.

6.2 Installation of Ethernet driver

Before installing the Ethernet driver, note the procedures below. You must know which operating system you are using in your board Series, and then refer to the corresponding installation flow chart. Then just follow the steps described in the flow chart. You will quickly and successfully complete the installation, even if you are not familiar with instructions for MS-DOS or Windows.

Note: The windows illustrations in this chapter are examples only. Follow the steps and pay attention to the instructions which appear on your screen.

6.2.1 Installation for MS-DOS and Windows 3.1

If you want to set up your Ethernet connection under the MS-DOS or Windows 3.1 environment, you should first check your server system model. For example, MS-NT, IBM-LAN server, and so on.

Then choose the correct driver to install in your biscuit PC.

The installation procedures for various servers can be found on the supplied CD-ROM, the correct path being:

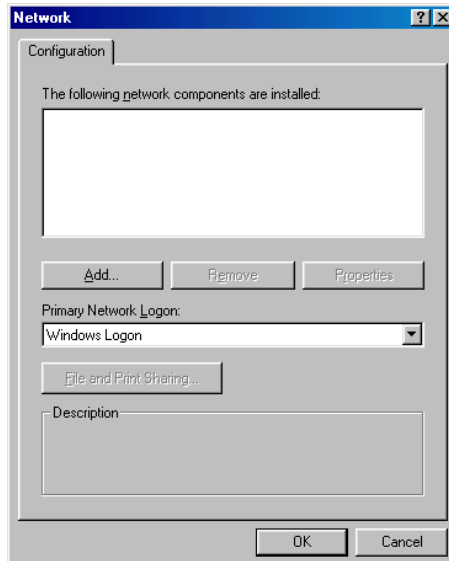
D:\Biscuit\9577\LAN\82559er\wfw311

6.2.2 Installation for Windows 98

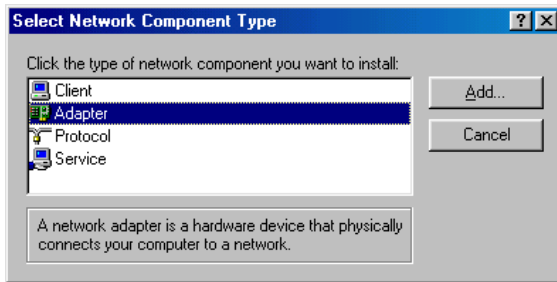
1. a. Select "Start", "Settings", "Control Panel".
b. Double click "Network".



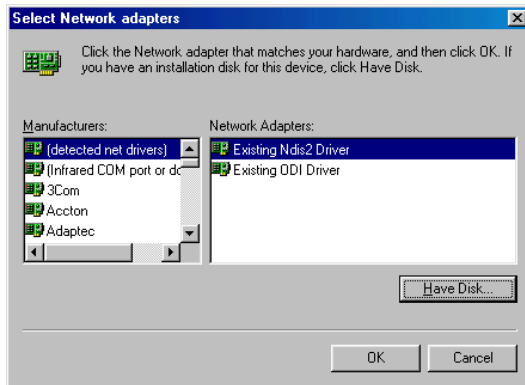
2. a. Click "Add" and prepare to install network functions.



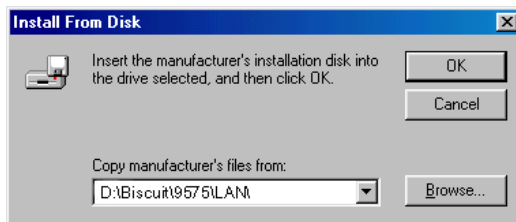
3. a. Select the "Adapter" item to add the Ethernet card.



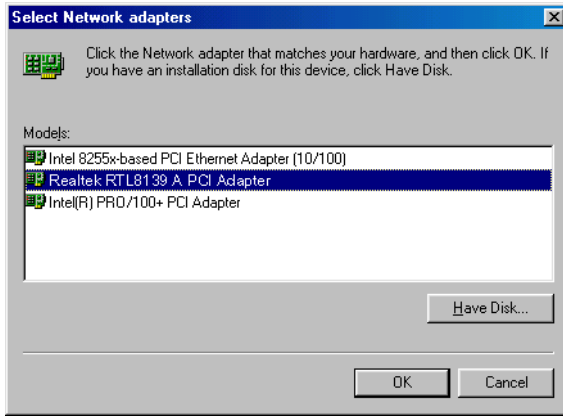
4. a. Click "Have Disk" to install the driver.



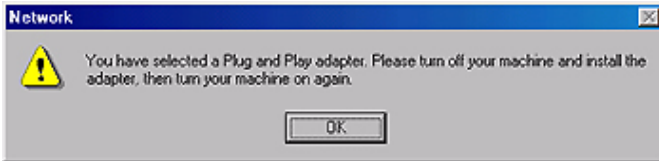
5. a. Insert the CD into the D: drive
b. Fill in "D:\Biscuit\9577\LAN\
c. Click "OK"



6.
 - a. Choose the "Intel 8255x based PCI Ethernet Adapter (10/100)"
 - b. Click "OK".

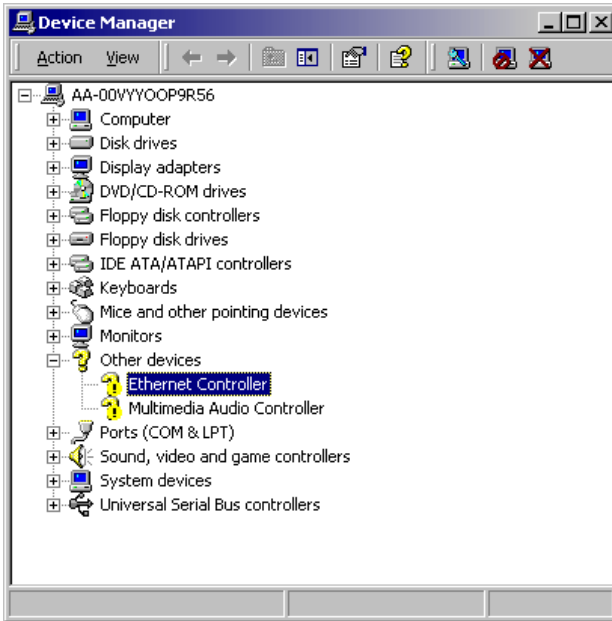


7.
 - a. Make sure the configurations of relative items are set correctly.
 - b. Click "OK" to reboot.

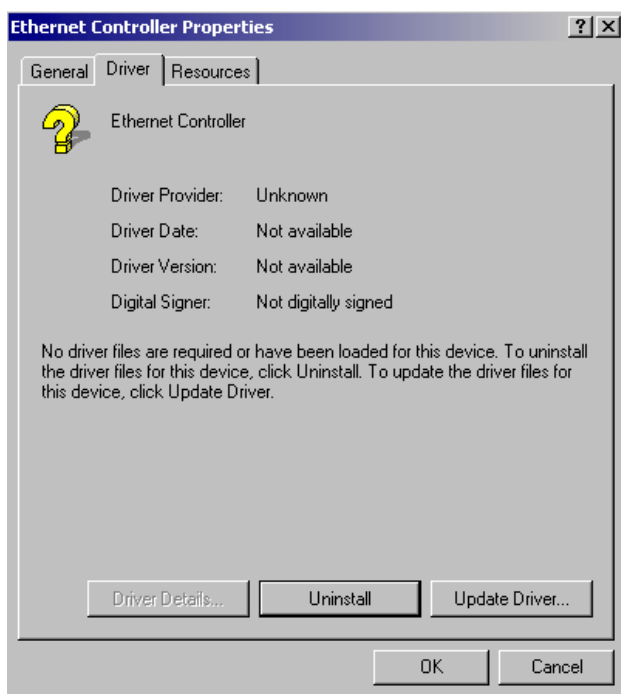


6.2.3 Installation for Windows 2000

1. Open Device Manager,



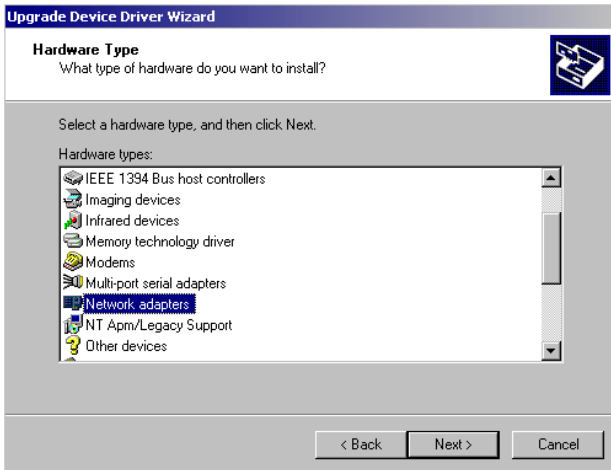
2. Click “Update Driver...”



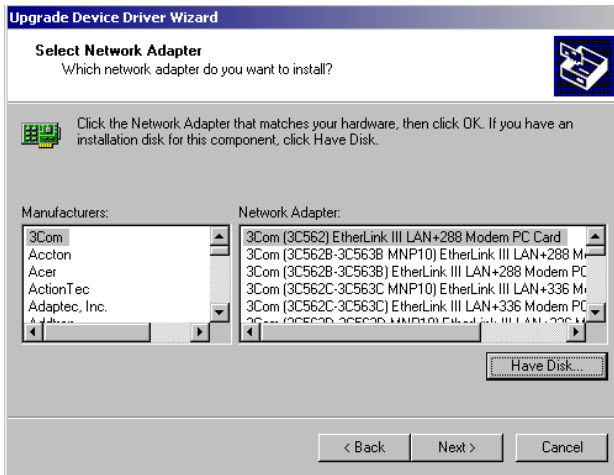
3. Click “Next”



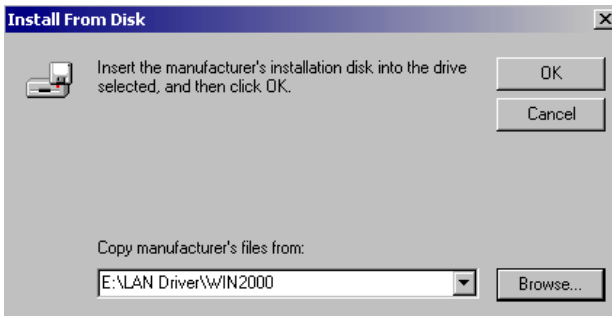
4. Select “Network Adapter”, and click “Next”



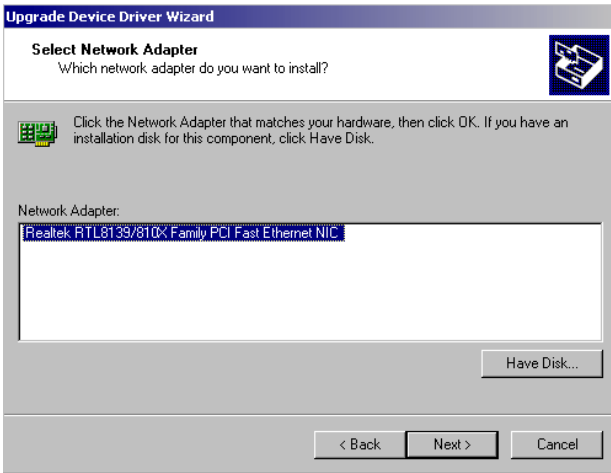
5. Select the driver, and click “Next”



6. Click “OK”



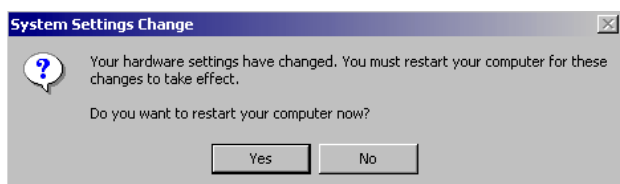
7. Click “Next”



8. Click “Finish”

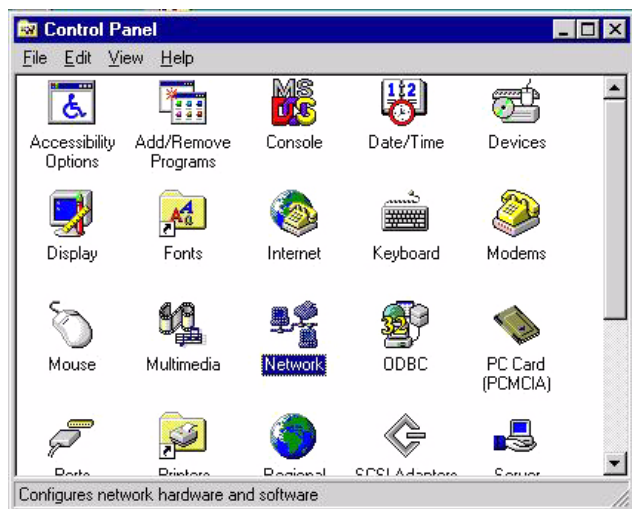


9. Click "Yes" to reboot

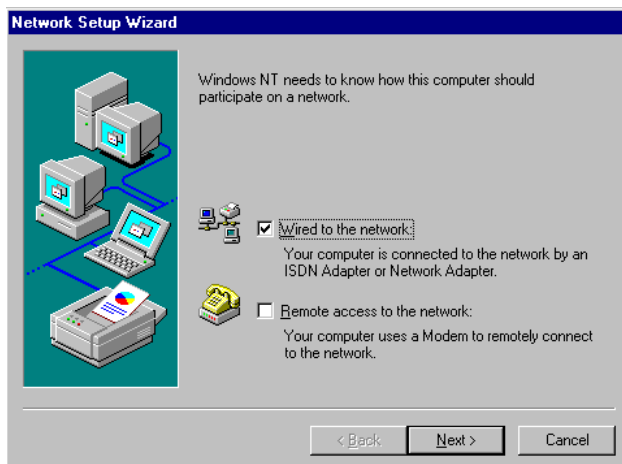


6.2.4 Installation for Windows NT

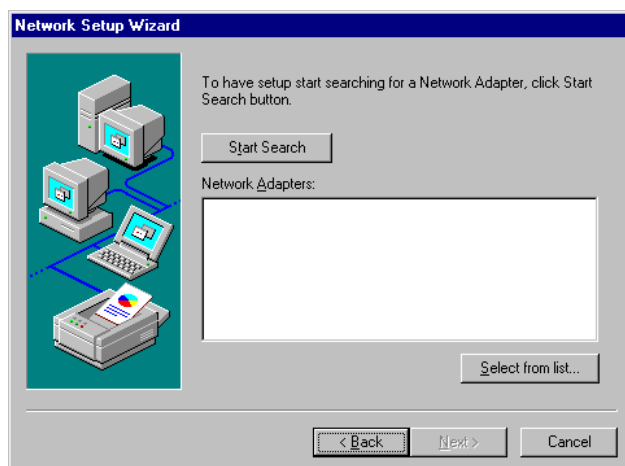
1. a. Select "Start", "Settings", "Control Panel"
b. Double click "Network"



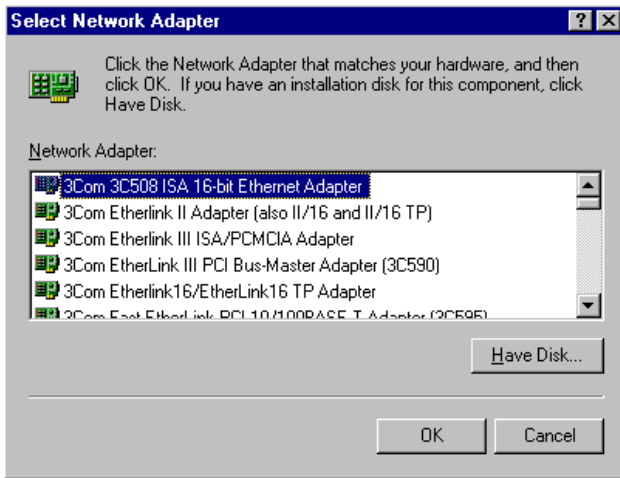
2. a. Choose type of network.
b. Click "Next"



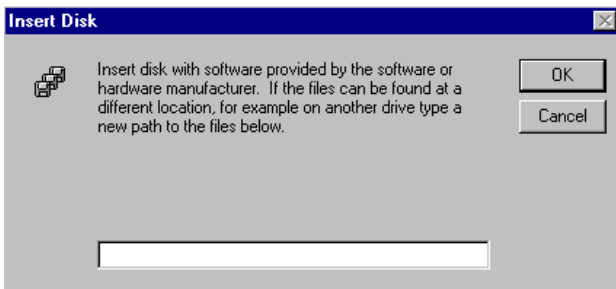
3. a. Click "Select from list..."



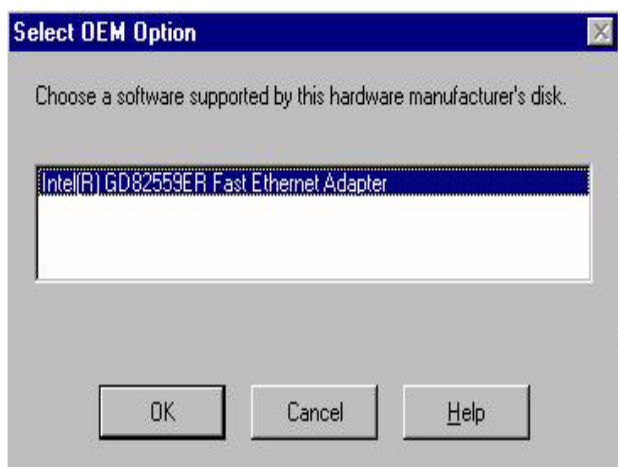
4. Click "Have Disk."



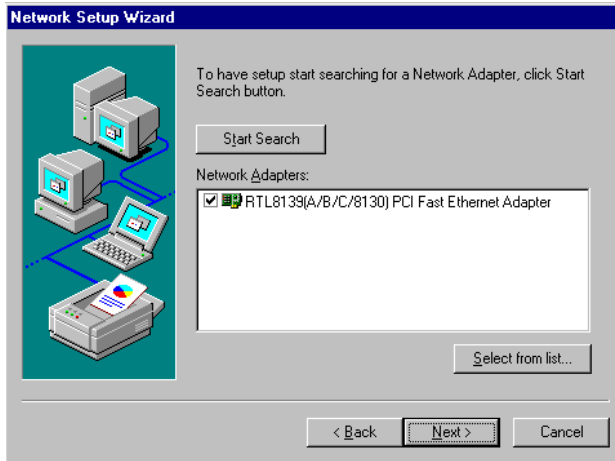
5.
 - a. Insert the Utility CD ROM
 - b. Fill in the correct path: D:\Biscuit\9577\LAN\82559er\winnt4
 - c. Click "OK".



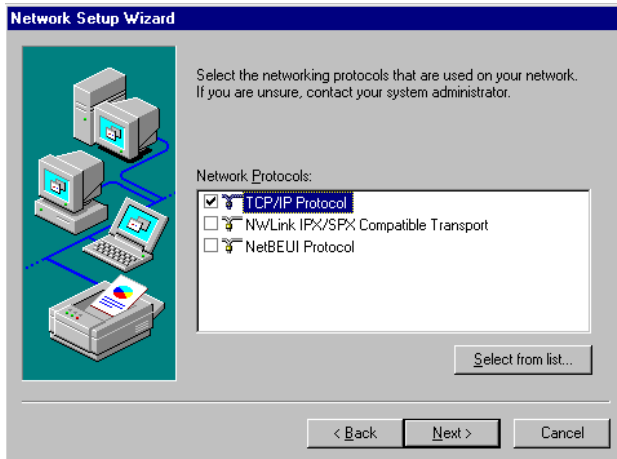
6. Check the highlighted item, and click “OK.”



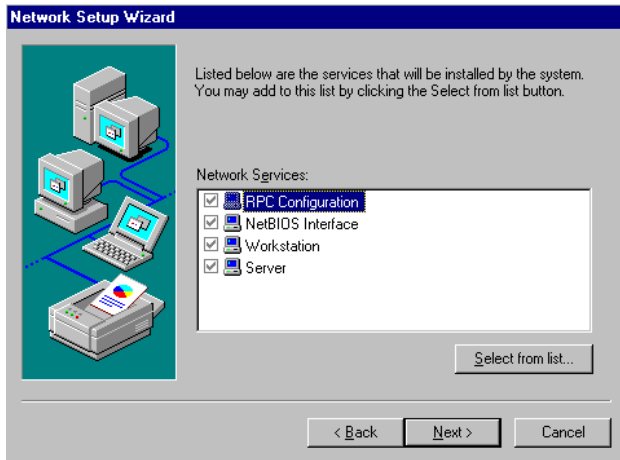
- Click "Next" to continue setup.



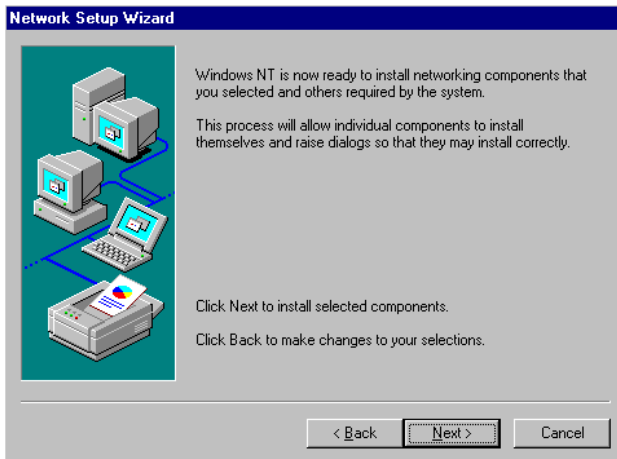
- Choose the networking protocols, then click "Next"



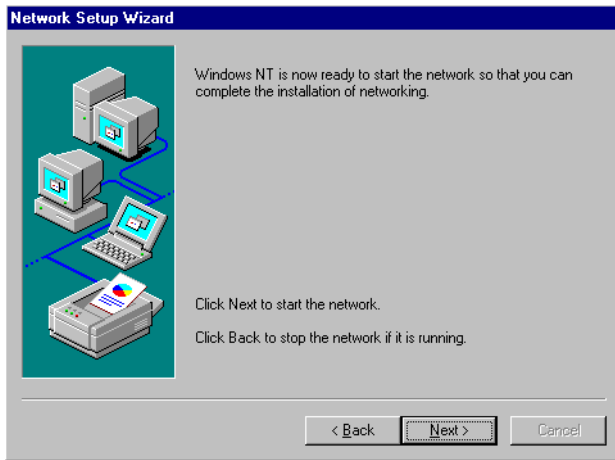
9. Select the correct Network Services then click "Next"



10. Click "Next" to continue setup.



11. Click “Next” to start the network.



6.3 Further information

Realtek website:	www.realtek.com.tw
Intel website:	www.intel.com
Advantech websites:	www.advantech.com www.advantech.com.tw

Programming the Watchdog Timer

The board is equipped with a watchdog timer that resets the CPU or generates an interrupt if processing comes to a standstill for any reason. This feature ensures system reliability in industrial standalone or unmanned environments.

Appendix A Programming the Watchdog Timer

A.1 Supported Input Timing Modes

In order to program the watchdog timer, you must write a program which writes I/O port address 443 (hex). The output data is a value of time interval. The value range is from 01 (hex) to 3E (hex), and the related time interval is 1 sec. to 62 sec.

Data	Time Interval
01	1 sec.
02	2 sec.
03	3 sec.
04	4 sec.
	.
	.
	.
3E	62 sec.

After data entry, your program must refresh the watchdog timer by rewriting the I/O port 443 (hex) while simultaneously setting it. When you want to disable the watchdog timer, your program should read I/O port 443 (hex).

The following example shows how you might program the watchdog timer in BASIC:

```
10      REM Watchdog timer example program
20      OUT &H443, data  REM Start and restart the
      watchdog
30      GOSUB 1000  REM Your application task #1
40      OUT &H443, data  REM Reset the timer
50      GOSUB 2000  REM Your application task #2
60      OUT &H443, data  REM Reset the timer
70      X=INP (&H443)  REM Disable the watchdog timer
80      END

1000    REM Subroutine #1, your application task
      .
      .
      .
1070    RETURN
2000    REM Subroutine #2, your application task
      .
      .
      .
2090    RETURN
```


Pin Assignments

This appendix contains information of a detailed or specialized nature. It includes:

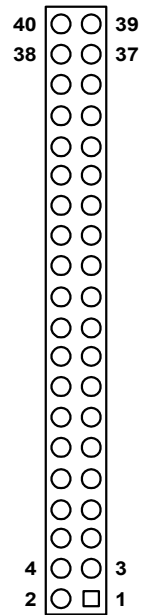
- Primary IDE Connector
- Secondary IDE Connector
- Floppy Connector
- Printer Port Connector
- CompactFlash Socket
- USB Port 1, 2
- D-SUB VGA Connector
- LAN RJ45 Connector
- COM Port 1, 2
- PS/2 Keyboard & Mouse Connector
- External Keyboard Connector
- CPU FAN Connector
- EBX Power Connector
- Power LED & Keyboard Lock
- External Speaker
- Reset Connector
- HDD LED Connector
- ATX Feature Connector
- ATX Soft-on Power Button Connector
- LCD 40-Pin Connector
- LCD 20-Pin Connector
- LCD Backlight Connector
- LVDS Connector
- I/O Daughter Board Connector 1
- I/O Daughter Board Connector 2
- RS485/422 Connector

Appendix B Pin Assignments

B.1 Primary IDE Connector (CN1)

Table B.1: Primary IDE Connector (CN1)

Pin	Signal	Pin	Signal
1	IDE RESET	2	GND
3	D7	4	D8
5	D6	6	D9
7	D5	8	D10
9	D4	10	D11
11	D3	12	D12
13	D2	14	D13
15	D1	16	D14
17	D0	18	D15
19	GND	20	Vcc
21	REQ	22	GND
23	IOW	24	GND
25	IOR	26	GND
27	READY	28	Cable Select (Pull-Low)
29	DACK	30	GND
31	IRQ14	32	NC
33	A1	34	Cable check
35	A0	36	A2
37	CS0	38	CS1
39	Active LED	40	GND



B.2 Secondary IDE Connector (CN2)

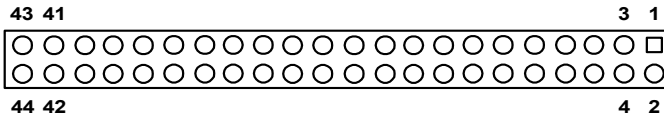


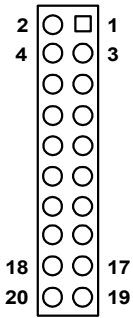
Table B.2: Secondary IDE Connector(CN2)

Pin	Signal	Pin	Signal
1	RESET	2	GND
3	D7	4	D8
5	D6	6	D9
7	D5	8	D10
9	D4	10	D11
11	D3	12	D12
13	D2	14	D13
15	D1	16	D14
17	D0	18	D15
19	GND	20	Vcc
21	DREQ	22	GND
23	IOW	24	GND
25	IOR	26	GND
27	IOCHRDY	28	CSELS
29	DACK	30	GND
31	IRQ	32	NC
33	A1	34	DMA66 Detect
35	A0	36	A2
37	HDCS0	38	HDCS1
39	HDLED	40	GND
41	Vcc	42	Vcc
43	GND	44	NC

B.3 Floppy Connector (CN3)

Table B.3: Floppy Connector (CN3)

Pin	Signal	Pin	Signal
1	GND	2	REDWC
3	GND	4	DS1
5	GND	6	INDEX
7	GND	8	MOTOR A ON
9	DISKETTE CHANGE	10	DRIVE SELECT B
11	HEAD SELECT	12	DRIVE SELECT A
13	READ DATA	14	MOTOR B ON
15	WRITE PROTECT	16	DIRECTION SELECT
17	TRACK 00	18	STEP
19	WRITE GATE	20	WRITE DATA

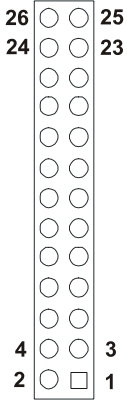


B.4 Printer Port Connector (CN4)

Table B.4: Printer Port Connector (CN4)

Pin	Signal	Pin	Signal
1	STB	2	AFD*
3	D0	4	ERR
5	D1	6	INIT*
7	D2	8	SLIN*
9	D3	10	GND
11	D4	12	GND
13	D5	14	GND
15	D6	16	GND
17	D7	18	GND
19	ACK*	20	GND
21	BUSY	22	GND
23	PE	24	GND
25	SLCT	26	NC

* low active



B.5 CompactFlash Socket (CN5)

Table B.5: CompactFlash Socket (CN5)

Pin	Signal	Pin	Signal
1	GND	26	#CD1
2	D3	27	D11
3	D4	28	D12
4	D5	29	D13
5	D6	30	D14
6	D7	31	D15
7	#CE	32	#CE2
8	A10	33	#VS14
9	#OE	34	#IORD
10	A9	35	#IOWR
11	A8	36	#WE
12	A7	37	#IRQ
13	Vcc	38	Vcc
14	A6	39	#CSEL
15	A5	40	#VS2
16	A4	41	RESET
17	A3	42	#WAIT
18	A2	43	#INPACK
19	A1	44	#REG
20	A0	45	BVD2
21	D0	46	BVD1
22	D1	47	D8
23	D2	48	D9
24	IOCS16	49	D10
25	#CD2	50	GND

B.6 USB Connector (CN6)

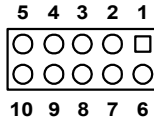


Table B.6: USB Connector (CN6)

Pin	Signal	Pin	Signal
1	+5V	6	+5V
2	UVO-	7	UV1-
3	UVO+	8	UV1+
4	USB GND	9	USB GND
5	GND	10	N/C

B.7 D-SUB VGA Connector (CN7)

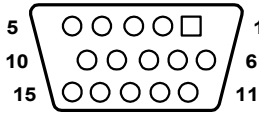


Table B.7: D-SUB VGA Connector (CN7)

Pin	Signal	Pin	Signal
1	RED	8	GND
2	GREEN	9	CRT Vcc
3	BLUE	10	GND
4	NC	11	NC
5	GND	12	DDCDATA
6	GND	13	HSYNC
7	GND	14	VSYNC
15	DDCCLOCK		

B.8 LAN RJ45 Connector (CN8)

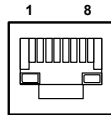


Table B.8: LAN RJ45 Connector (CN8)

Pin	Signal
1	TX+
2	TX-
3	RX+
6	RX-

B.9 COM Port 1, 2 Connector (CN9, CN10)

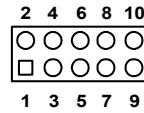
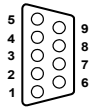


Table B.9: COM Port 1 Connector (CN9, CN10)

COM1 connector (CN9)				COM2 connector (CN10) RS232 Only			
Pin	Signal	Pin	Signal	Pin	Signal	Pin	Signal
1	DCD	6	DSR	1	DCD	2	DSR
2	RX	7	RTS	3	RX	4	RTS
3	TX	8	CTS	5	TX	6	CTS
4	DTR	9	RI	7	DTR	8	RI
5	GND			9	GND	10	N.C.

B.10 PS/2 Keyboard & Mouse Connector (CN11)

Table B.10: PS/2 Keyboard & Mouse Connector (CN11)

Pin	Signal
1	KB data
2	Mouse DATA
3	Ground
4	+5V
5	KB CIOCK
6	MS CIOCK
7	NC
8	NC

B.11 External Keyboard Connector (CN12)

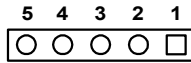


Table B.11: External Keyboard Connector (CN12)

Pin	Signal
1	Keyboard Clock
2	Keyboard Data
3	NC
4	GND
5	+5V

B.12 CPU Fan Connector (CN14)

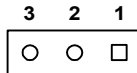


Table B.12: CPU FAN Connector (CN14)

Pin	Signal
1	GND
2	+12V
3	Fan speed detect signal input

B.13 EBX Power Connector (CN15)

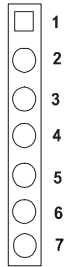


Table B.13: EBX Power Connector (CN15)

Pin	Signal
1	+5V input
2	GND
3	GND
4	+12V input
5	NC
6	GND
7	+5V input

B.14 Power LED & Keyboard Lock (CN16)

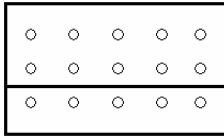


Table B.14: Power LED & Keyboard Lock (CN16)

Pin	Signal
1	Power LED+
2	NC
3	Power LED-
4	KB_LOCK+
5	KB_LOCK-(GND)

B.15 External Speaker (CN17)



Table B.15: External Speaker (CN17)

Pin	Signal
1	Vcc
2	NC
3	Internal Buzzer
4	Speaker Signal

B.16 Reset Connector (CN18)

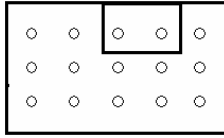


Table B.16: Reset Connector (CN18)

Pin	Signal
1	Reset signal
2	GND

B.17 HDD LED Connector (CN19)

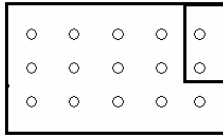


Table B.17: HDD LED Connector (CN19)

Pin	Signal
1	HDD LED+
2	HDD LED-

B.18 ATX Feature Connector (CN20)

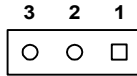


Table B.18: ATX Feature Connector (CN20)

Pin	Signal
1	ATX PS_ON signal output
2	Vcc
3	Suspend 5V input

B.19 ATX Soft-on Power Button Connector (CN21)

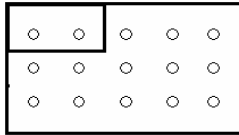


Table B.19: ATX Soft-on Power Button Connector (CN21)

Pin	Signal
1	POWER ON
2	GND

B.20 LCD 40-Pin Connector (CN22)

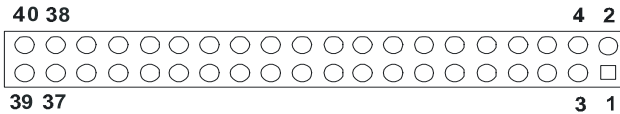


Table B.20: LCD 40-Pin Connector (CN22)

Pin	Signal	Pin	Signal
1	+5V output	2	+5V output
3	GND	4	GND
5	+3.3V output	6	+3.3V output
7	NC	8	GND
9	PD0 signal output	10	PD1 signal output
11	PD2 signal output	12	PD3 signal output
13	PD4 signal output	14	PD5 signal output
15	PD6 signal output	16	PD7 signal output
17	PD8 signal output	18	PD9 signal output
19	PD10 signal output	20	PD11 signal output
21	PD12 signal output	22	PD13 signal output
23	PD14 signal output	24	PD15 signal output
25	PD16 signal output	26	PD17 signal output
27	PD18 signal output	28	PD19 signal output
29	PD20 signal output	30	PD21 signal output
31	PD22 signal output	32	PD23 signal output
33	GND	34	GND
35	FPCLK signal output	36	FPVS signal output
37	FPDE signal output	38	FPHS signal output
39	NC	40	ENVEE signal

Note: The model number of the CN22 socket is
DF13A-40DP-1.25V (Hirose Electric Co., Ltd.)

B.21 LCD 20-Pin Connector (CN23)

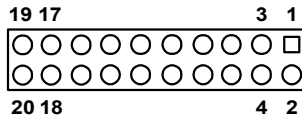


Table B.21: LCD 20-Pin Connector (CN23)

Pin	Signal	Pin	Signal
1	GND	2	GND
3	PD24	4	PD25
5	PD26	6	PD27
7	PD28	8	PD29
9	PD30	10	PD31
11	PD32	12	PD33
13	PD34	14	PD35
15	GND	16	GND
17	NC	18	NC
19	NC	20	NC

B.22 LCD Backlight Connector (CN24)

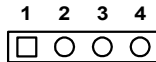


Table B.22: LCD Backlight Connector (CN24)

Pin	Signal
1	+12V output
2	GND
3	Back-light enable signal output
4	NC

B.23 LVDS Connector (CN25)

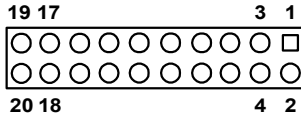


Table B.23: LVDS Connector (CN25)

Pin	Signal	Pin	Signal
1	GND	2	GND
3	YP0	4	ZP0
5	YM0	6	ZM0
7	YP1	8	ZP1
9	ZM1	10	ZM1
11	YP2	12	ZP2
13	ZM2	14	ZM2
15	YCP	16	ZCP
17	YCM	18	ZCM
19	3V_SAFE	20	3V_SAFE

B.24 I/O Daughter Board Connector 1 (CN27)

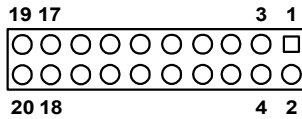


Table B.24: I/O Daughter Board Connector 1 (CN27)

Pin	Signal	Pin	Signal
1	USBD3+	2	USBD2+
3	USBD3-	4	USBD32
5	USBV2	6	USBV2
7	GND	8	GND
9	USBD1+	10	USB0+
11	USB1-	12	USB0-
13	USBV0	14	USBV0
15	GND	16	GND
17	3V3B	18	LAN2 ACT LED+
19	LAN2 ACT LED-	20	LAN SPLED

B.25 I/O Daughter Board Connector 2 (CN28)

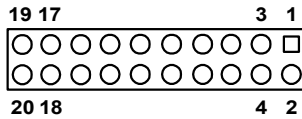


Table B.25: I/O Daughter Board Connector 2 (CN28)

Pin	Signal	Pin	Signal
1	NC	2	NC
3	NC	4	NC
5	NC	6	NC
7	NC	8	NC
9	NC	10	NC
11	NC	12	NC
13	LAN2 TD+	14	GND
15	LAN2 RD+	16	LAN2 TD-
17	3V3B	18	LAN2 RD-
19	MSCLK	20	Vcc

B.26 RS485/422 Connector (CN29)

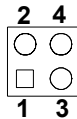


Table B.26: RS485/422 Connector (CN29)

Pin	Description	Pin	Description
1	TXD-	2	TXD+
3	RXD-	4	RXD+

Appendix **C**

System Assignments

This appendix contains information of a detailed nature. It includes:

- System I/O ports
- 1st MB memory map
- DMA channel assignments
- Interrupt assignments

Appendix C System Assignments

C.1 System I/O Ports

Table C.1: System I/O ports

Addr. range (Hex)	Device
00-1F	Master DMA controller
20-3F	Master Interrupt controller
40-5F	Timer/Counter
60-6F	Keyboard controller
(60h)	KBC Data
(61h)	Misc Functions & Spkr Ctrl
(64h)	KBC Command/Status
70-77	RTC/CMOS/NMI-Disable
78-7F	-available for system use-
80	-reserved-(debug port)
81-8F	DMA Page Registers
90-91	-available for system use-
92	System Control
93-9F	-available for system use-
A0-BF	Slave Interrupt Controller
C0-DF	Slave DMA Controller
E0-FF	-available for system use-
100-CF7	-available for system use*
CF8-CFB	PCI Configuration Address
CFC-CFF	PCI Configuration Data
D00-FFFF	-available for system use-
200-20F	Game Port
2F8-2FF	COM2
378-37F	Parallel Port (Standard & AFF)
3F0-3F1	Configuration Index/Data
3F0-3F7	Floppy Controller
3F8-3FF	COM1

Table C.1: System I/O ports

Addr. range (Hex)	Device
778-77A	Parallel Port (ECP Extensions) (Port 378+400)
MPU-401 select from 300 ~ 330H (2 bytes)	

C.2 1st MB memory map

Table C.2: 1st MB memory map

Addr. range (Hex)	Device
F0000h - FFFFFh	System ROM
*CC000h - EFFFFh	Unused (reserved for Ethernet ROM)
C0000h - CBFFFh	Expansion ROM (for VGA BIOS)
B8000h - BFFFFh	CGA/EGA/VGA text
B0000h - B7FFFh	Unused
A0000h - AFFFFh	EGA/VGA graphics
00000h - 9FFFFh	Base memory

* If Ethernet boot ROM is disabled (Ethernet ROM occupies about 16 KB)

* E0000 - EFFFF is reserved for BIOS POST

C.3 DMA channel assignments

Table C.3: DMA channel assignments

Channel	Function
0	Available
1	Available (audio)
2	Floppy disk (8-bit transfer)
3	Available (parallel port)
4	Cascade for DMA controller 1
5	Available
6	Available
7	Available

* Audio DMA select 1, 3, or 5

** Parallel port DMA select 1 (LPT2) or 3 (LPT1)

C.4 Interrupt assignments

Table C.4: Interrupt assignments

Interrupt#	Interrupt source
IRQ 0	Interval timer
IRQ 1	Keyboard
IRQ 2	Interrupt from controller 2 (cascade)
IRQ 3	COM2
IRQ 4	COM1
IRQ 5	Unused
IRQ 6	FDD
IRQ 7	LPT1
IRQ 8	RTC
IRQ 9	Reserved (audio)
IRQ 10	Unused
IRQ 11	Reserved for watchdog timer
IRQ 12	PS/2 mouse
IRQ 13	INT from co-processor
IRQ 14	Primary IDE
IRQ 15	Secondary IDE for CFC

* Ethernet interface IRQ select: 9, 11, 15

* PNP audio IRQ select: 9, 11, 15

* PNP USB IRQ select: 9, 11, 15

* PNP ACPI IRQ select: 9, 11, 15

Free Manuals Download Website

<http://myh66.com>

<http://usermanuals.us>

<http://www.somanuals.com>

<http://www.4manuals.cc>

<http://www.manual-lib.com>

<http://www.404manual.com>

<http://www.luxmanual.com>

<http://aubethermostatmanual.com>

Golf course search by state

<http://golfingnear.com>

Email search by domain

<http://emailbydomain.com>

Auto manuals search

<http://auto.somanuals.com>

TV manuals search

<http://tv.somanuals.com>