



MOTION COMPUTING M1400 TABLET PC

USER GUIDE

Copyright Information

Acrobat is a registered trademark of Adobe Systems Incorporated.

AuthenTec is a registered trademark of AuthenTec, Inc.

Bluetooth is a trademark of the Bluetooth Alliance, USA.

Intel, Intel Inside, the Intel Inside logo, and Pentium are trademarks or registered trademarks of Intel Corporation or its subsidiaries in the United States and other countries.

Microsoft Windows, Windows XP, Windows XP Tablet PC Edition, and Windows Journal are either registered trademarks or trademarks of Microsoft Corporation in the United States and/or other countries.

OmniPass is a trademark of Softex, Inc.

PCTEL is a registered trademark of PCTEL, Inc.

Realtek is a trademark of Realtek Semiconductor Corporation.

SigmaTel is a registered trademark of SigmaTel Corporation.

TI is a registered trademark of Texas Instruments, Inc.

VirtualDrive and FarStone are trademarks or registered trademarks of FarStone Technologies, Inc.

Widcomm is a registered trademark of Widcomm, Inc.

Wi-Fi is a registered trademark of the Wi-Fi Alliance.

Motion Computing, Inc. has made every effort to identify trademarked properties and owners on this page. All brands and product names used in this document are for identification purposes only and may be trademarks or registered trademarks of their respective companies.

NOTICE: The information in this publication is subject to change without notice. MOTION COMPUTING, INC. SHALL NOT BE HELD LIABLE FOR TECHNICAL OR EDITORIAL ERRORS OR OMISSIONS CONTAINED HEREIN NOR FOR ACCIDENTAL OR CONSEQUENTIAL DAMAGES RESULTING FROM THE FURNISHING, PERFORMANCE, OR USE OF THIS MATERIAL. The information contained in this document is provided "as is" without warranty of any kind and is subject to change without notice. The warranties for Motion Products are set forth in the express limited warranty statements accompanying such products. Nothing herein should be construed as constituting an additional warranty. This publication contains information protected by copyright. No part of this publication may be photocopied or reproduced in any form without prior written consent from Motion Computing, Inc.

© 2004 Motion Computing, Inc.

Motion Computing is a registered trademark and View Anywhere is a trademark of Motion Computing, Inc. (March 2004)

P/N 024-02-0049 Rev.A00

About This User Guide

CAUTIONS, WARNINGS AND NOTICES

The following notices are found in this *User Guide*:



WARNING: Text set off in this way indicates that failure to follow directions in the warning could result in bodily harm or loss of life.



CAUTION: Text set off in this way indicates that failure to follow directions in the Caution could result in damage to the equipment or loss of information.

IMPORTANT: Text set off in this way presents information or instructions that should be followed or information of particular interest.

NOTE: Text set off in this way presents information or instructions.

MENU ITEMS, BUTTONS, ICONS

Menu items, icons, and instructions found in the procedures in this *User Guide* are set apart by capitalizing them exactly as shown on screen. For example, the Start menu, Dashboard, Tablet and Pen Settings icon, Apply, Reset, etc. Buttons on the chassis are identified through diagrams.

WRITING ON THE DISPLAY

Writing on the Motion Tablet PC digitizer display in this *User Guide* refers to any hand-written input using the specially-designed Motion digitizer Pen, provided. The display responds only to this Motion Pen and not to any other type of pen or to a stylus or other device such as those used with personal digital assistants (PDAs). The display surface may be damaged by ink pens or other pointed objects.

INK

Use of the term *ink* in the documentation refers to *digital ink*, that is, text entered in handwritten format and converted to an object that can be displayed exactly as you write it.

REFERENCES TO USING THE PEN AND PEN FUNCTION BUTTON

Notations for using the Motion Digitizer Pen, which are found throughout this *User Guide*, are described below:

- Tap — Tap the Pen on the Tablet PC display, without pressing the function button on the Pen
- Double-tap — Double-tap the Pen on the display, without pressing the function button on the Pen
- Right-click — Press the function button on the Pen and tap the Pen on the display (equivalent to a mouse right-click)
- Press and hold — Press and hold the tip of the Pen to the display, without pressing the function button on the Pen (equivalent to a mouse right-click)
- Tap and drag — Tap and drag the Pen on the display
- Select/Highlight — Tap on the item on the Tablet PC display with the Pen to activate the function

Table of Contents

About This User Guide

Cautions, Warnings and Notices	iii
Menu Items, Buttons, Icons	iii
Writing on the Display	iii
Ink	iii
References to Using the Pen and Pen Function Button	iii

Chapter 1 Getting Started with Your Motion Tablet PC

Motion Tablet PC Features	1
Package Contents	3
Motion Accessories	3
What To Do First	4
Calibrate the Pen	4
Practice Using the Pen	4
Take the Tutorials	5
Motion Resources Page and Online User Guide	5
Microsoft Help and Resources Center Page	6
“Did You Know” Section	6
Take a Tour of Windows XP	6
Open the Motion Dashboard	6

Chapter 2 Motion Tablet PC Hardware

Tablet PC Displays	8
Tablet PC Overview	10
Chassis and Hardtop Cover	12
Digitizer Pen	12
Motion AC Adapter	12
Motion Batteries	12
Front Panel Buttons	13
Modem and LAN Connectors	13
Tablet PC Chassis LEDs	14
Tablet PC Front Panel LEDs	14
Battery Status LEDs	15
Battery Status Gauge	15
Fingerprint Reader	15
Ambient Light Sensor (ALS)	16
Microphones	16
PC Card Slot	16
Mini PCI Card (Wireless)	16
Labels	17
Accessories	18
Motion Desktop Stand	18
Motion FlexDock	18
Motion Multi-Unit Battery Charger	19
Motion Hardtop Keyboard	19
Motion Mobile Keyboard with Touch Pad	19
Motion Hardtop Cover, Portfolios, and Cases	20
Motion Optical Disc Drives	20
Memory Upgrade Modules	20

Chapter 3 Motion Tablet PC Software

Motion Software	21
Motion Operating System Recovery CDs: Description and Use	22
Reinstalling the VirtualDrive Application (Optional)	23
Motion Utilities and Drivers CD	23
Motion Application Software	24
Motion Dashboard	24
Tablet PC Input Panel (TIP)	25
Speech and Voice Recognition	26

Chapter 4 Using Your Motion Tablet PC

Initializing Microsoft Windows XP	27
Required Information	27
Optional Connections, Equipment, and Information	27
Windows Initialization Procedure	28
Microsoft Office Activation (Optional)	29
Starting and Stopping Your Tablet PC	29
Starting Your Tablet PC	29
Stopping Your Tablet PC	30
Opening the Motion Dashboard	30
Conserving Power With Stand by or Hibernate Modes	30
Launching Stand by or Hibernate Modes from the Start Button	31
Launching Stand by Mode from the Motion Dashboard	31
Setting Up Stand by or Hibernate Modes from the Power Switch	31
Restarting from Stand by or Hibernate Modes	31
Operating the Motion Digitizer Pen	31
Calibrating the Pen to Increase Its Accuracy	32
Hints for Writing with the Pen	32
Adjusting Menu Locations for Left-Handed Use	34
Pen Gestures	34
Hints for Optimizing Your Display Window	34
Making Best Use of the Tablet PC Input Panel	35
Hints for Working with the Input Panel	35
Input Panel Text Preview Window	36
“Sending as Ink” (Handwriting and Drawings) from the Input Panel	36
Eliminating Paper with Windows Journal	37
Creating Forms and Editing Them in Windows Journal	37
Have Sticky Notes Handy for Jotting Down Information	38
Changing Screen Orientation	38
Customizing Buttons	39
Ambient Light Sensor (ALS)	40
Setting “Fixed” Display Brightness: ALS Off	40
Setting “Dynamic” Display Brightness: ALS On	40
Turning the Display Backlight On and Off	40
Keeping Track of Your Battery Power	41
Reading Battery Power from the Tablet PC Display	41
Reading Battery Power from the Battery Gauge	41
Reading Battery Power from Motion Dashboard	41
Reading Battery Power from the Power Meter	41
Creating New Power Schemes for Special Situations	41
Charging the Battery	42
Swapping the Battery	42
Disposing of Used Batteries	43
Battery and Power Management Hints	43
Saving Battery Power with the Ambient Light Sensor	44
Adding Memory to Improve System Performance	44

Installing Optical Disk Drives	45
Optical Disk Drive Software	45
Mirroring or Extending Your Display	46
Connecting the External Monitor/Data Projector and Tablet PC	46
Setting Up a Mirrored Desktop	46
Setting Up an Extended Desktop	47
Setting Up a Wireless Connection	48
Bluetooth Wireless Radio Set Up	49
Enable Bluetooth Wireless on the Tablet PC	49
Set Up a Device (Bluetooth Mouse)	49
Pairing a Device (Bluetooth Keyboard)	51
Unpairing a Device (Bluetooth Keyboard)	53
Bluetooth Operating Tips	53
Simultaneous 802.11 and Bluetooth Wireless File Transfers	53
Bluetooth Connection Tips	53
Microphone Design and Functions	54
Narrow Focus	54
Wide Focus	55
Meeting/Conference	55
Setting Up the Universal Audio Jacks	55
Setting Up Speech Recognition for Dictation	55
Using Speech Recognition for Commands	56
Creating a Screen-Resolution Scheme for an External Monitor or Similar Device	56
Multimedia Applications	56
About the OmniPass Password Management System	57
(Optional) If you need to set up a windows user account and password...	57
Basic Fingerprint Reader Set Up	57
Enrolling with OmniPass	57
Enrolling a Fingerprint with OmniPass	58
Capturing Your Fingerprint	59
Advanced Fingerprint Reader Features	61
Checking Logon Status	61
Setting Up Tablet PC Security	62
Setting the Windows Operating System Password	62
Setting the BIOS Passwords	62
Clearing Tablet PC Security	64
Caring for Your Tablet PC and Its Accessories	65
General Care	65
Caring for the Display Screen	65
Caring for the Motion Digitizer Pen	66
Replacing the Pen Tips	66
Ordering New Pens	66
Traveling With Your Tablet PC	66
Traveling by Air	67
FAA Wireless Air Travel Requirement	67
Other Travel Hints	67

Appendix A Troubleshooting and Support

Appendix B Motion Tablet PC Specifications

Appendix C Wireless Mini-PCI Installation

Chapter 1

Getting Started with Your Motion Tablet PC

Thank you for purchasing a Tablet PC from Motion Computing®! Your Motion Tablet PC combines the best features of desktop and notebook computing with the unique mobility and versatility found only in a Tablet PC.

MOTION TABLET PC FEATURES

The Motion M1400 Tablet PC offers these features:

- Microsoft® Windows® XP Tablet PC Edition operating system
- Intel® processor, Ultra Low Voltage (ULV), and Intel 855GME chipset
- Standard 12.1-inch XGA TFT display with an ambient light sensor that automatically balances brightness (depending on lighting conditions); optional View Anywhere™ Display that reduces reflection and glare and improves contrast and viewing angles
- 20GB hard drive (minimum)
- Two PC333 DDR SDRAM slots with 256MB of installed RAM, upgradeable to 2GB
- IEEE 802.11b/g and Bluetooth® wireless built in
- Built-in fingerprint sensor for convenient, secure password management
- Two amplified microphones with ambient noise filters improve voice recognition and Voice over IP (VoIP) capabilities
- Motion Dashboard for convenient access to Tablet PC controls
- USB 2.0; fully backward compatible to USB 1.1
- Front panel status LEDs and function buttons
- Screen rotation; handwriting and voice recognition; dual-head video controller

- PCMCIA card slot, for networking, memory expansion or accessory connections
- Programmable power-saving schemes
- I/O ports: Universal microphone/headphone jacks; DC power in; two USB ports; IEEE 1394 port; external VGA monitor port; RJ-11 (modem); RJ-45 (Ethernet network)
- Motion digitizer pen for ink input, with a pen storage bay and a pen tether anchor built into the chassis
- USB keyboard and mouse support
- Pen
- 3- and 6-cell, prismatic lithium ion (Li-ion) battery
- Lightweight magnesium alloy chassis
- Kensington-type lock slot

**PACKAGE
CONTENTS**

Motion Tablet PC packages may contain the following equipment (this may change from time to time as new equipment is introduced; see your invoice for a list of items that were shipped with the product):

- Motion M1400 Tablet PC
- Digitizer pen, extra pen tips, and pen tip replacement tool
- AC Adapter, Power Cord, and AC Mini Plug
- Hardtop Cover
- Cloth for cleaning the display
- System software CDs
- Product documentation

IMPORTANT: Check all shipping containers before discarding them to make you sure you have unpacked all the items. If anything appears to be missing from your order, read the invoice to see if the part was back ordered. To check your order, contact your Motion Computing representative (if you bought the Tablet PC directly from Motion) or your Motion reseller.

Motion Accessories

You can purchase any of the following Motion accessories:

NOTE: New accessories may be added from time to time. Visit the Motion Computing website at www.motioncomputing.com/accessories for the most current accessory list.

- Motion FlexDock docking station
- Mobile keyboard with touch pad
- Motion Hardtop Keyboard
- Wireless Mobile Keyboard
- Replacement Hardtop Cover
- Portfolios and cases
- Rubber edge protector
- Battery charger
- Extra batteries and pens
- Optical disc drives
- 256MB, 512MB, 1GB DDR memory upgrade modules
- 40GB or 60GB hard drives (available only at time of purchase)
- PC card options
- Additional software

**WHAT TO DO
FIRST**

Congratulations on selecting the Motion Tablet PC! After you turn on your Tablet PC and start Windows XP, you may want to take the following steps:

- Calibrate the pen.
- Practice using the pen by playing Inkball.
- Take the tutorials.
- Check out the “Using Your Motion Tablet PC” page.
- See what is on the Windows Help and Support Center page.
- Take the Microsoft Windows XP tour.

Calibrate the Pen

Your pen will function better and you will be more successful using it if you calibrate it immediately and recalibrate it occasionally. For directions, see the section “Calibrating the Pen” in Chapter 4 of this *User Guide*.

Practice Using the Pen

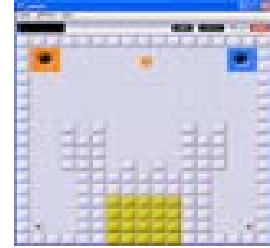
The Motion digitizer pen is a unique input device for the Tablet PC system, but it may take a little practice to use. Here are some hints:

- When you write with the pen, you can rest your hand or arm anywhere on the Tablet PC display without disturbing any open programs or damaging the display surface.
- Watch the cursor instead of the pen tip when you write. The cursor is a guide for your pen movements. If it does not align with the pen tip, you should recalibrate the pen.
- Practice writing and learn how firmly and where to tap on the Tablet PC display. You need these skills for activating programs, menus, or other Tablet PC functions.
- The pen can be held like any other writing tool. Learn how to hold it and when and how to press the pen function button, which activates right-click functions.
- Change pen tips regularly, especially if you drop the pen onto a rough surface that could damage the tip or embed debris in it. Damaged pen tips can scratch the display.

For other hints about using the pen, see the section “Using the Pen” in Chapter 4 of this *User Guide*.

Play Inkball

Practice your digitizer pen skills on this game, which is activated from Start, All Programs, Games, Inkball.

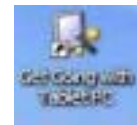


Take the Tutorials

When you start your Tablet PC, several tutorials are offered to help you learn about its various functions, such as the Windows Journal, Tablet PC Input Panel, and speech recognition.

The Tutorials are short, quick, and informative and we highly recommend them as a starting place to begin a successful Tablet PC experience.

NOTE: Microsoft Windows XP Tablet PC Edition provides several tutorials. One set appears each time you start the Tablet PC (unless you deactivate this option). Others can be found by tapping the Get Going with Tablet PC icon on your desktop.



Motion Resources Page and Online User Guide

The link to the *Motion Tablet PC User Guide* is provided on the “Using Your Motion Tablet PC” page, shown here. In addition to this link, other instructions for using the pen, Dashboard, and other applications are included.

Tap the Using Your Motion Tablet icon on your desktop to access this page.



Microsoft Help and Resources Center Page

You can find additional information about your Tablet PC and the Windows XP Tablet PC Edition operating system in the Microsoft Help and Support Center. The Help and Support Center is installed on your Tablet PC. To access Help, select Start> Help and Support.



“Did You Know” Section

Whenever you open the Help and Support Center while your Tablet PC is connected to the Internet, the “Did You Know” section checks for updates from Microsoft and Motion Computing, such as system-use hints, or notices from Motion Computing about your Tablet PC.

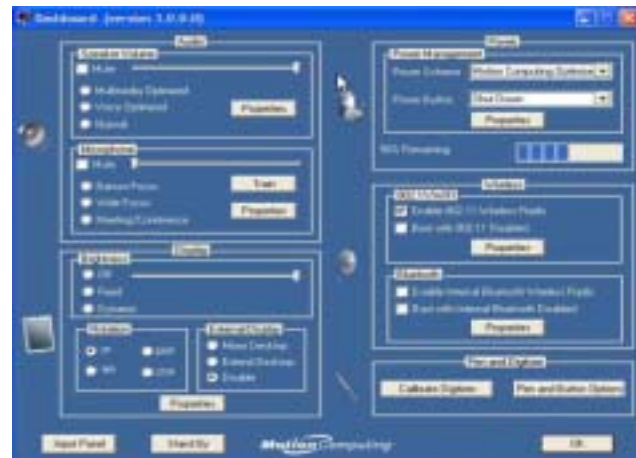
Take a Tour of Windows XP

If this is your first experience with the Windows XP operating system, this tour is a good introduction. You can find this by selecting Start> Help and Support>What’s New in Windows XP>“Taking a tour or tutorial.”



Open the Motion Dashboard

Dashboard is an exclusive Motion Computing interface for accessing programs and functions and for configuring your Tablet PC. To start Dashboard, press the button on the front panel with the square symbol. For more information about using Dashboard, see Chapter 4 of this *User Guide*.



Chapter 2

Motion Tablet PC Hardware

This chapter describes the Motion M1400 Tablet PC, including hardware components, LEDs, and accessories.

TABLET PC DISPLAYS

Standard Display

The 12.1-inch Motion Tablet PC standard display and writing surface combine three key components:

- A highly-readable, liquid-crystal display
- An acrylic protective layer that offers a firm writing surface and minimizes glare
- Under the display, a digitizer panel that allows hand-written entry with a specially-designed Motion digitizer pen and on-screen keyboard data entry



Standard Display Features

- The Motion Tablet PC display, unlike touchscreens or PDAs, responds to the digitizer pen, but not to a plastic stylus or to finger touches or taps.
- Touching the Tablet PC display surface does not affect any open programs or data input, so you can safely rest your hand on the display and not disturb your work.

NOTE: For more information about caring for the display, see Chapter 4 of this *User Guide*.

View Anywhere™ Display

The optional Motion View Anywhere Display was designed to enhance indoor viewing and to improve outdoor viewing while retaining all the standard display features. The bright 12.1-inch display was developed from a proprietary optical enhancement process based on technology initially developed for high-end military aviation and marine applications.

Key Components

- A highly-readable, liquid-crystal display
- A glass protective layer that minimizes reflection and glare and improves contrast
- Under the display, a digitizer panel that allows hand-written entry (using a specially-designed Motion digitizer pen) and onscreen keyboard data entry

Special View Anywhere Display Features

- Provides a 30-to-1 reduction in unwanted reflection and glare and a 15% improvement in “light pass-through” efficiency
- Produces more vivid colors with less glare, improved contrast ratio, and better viewing angles without compromising backlight power consumption
- Retains the same feel of pen on paper as the standard display

NOTE: For more information about caring for the display, see Chapter 4 of this *User Guide*.

**TABLET PC
OVERVIEW**

The following diagram shows the LEDs, buttons, connectors, and other components on the Tablet PC.

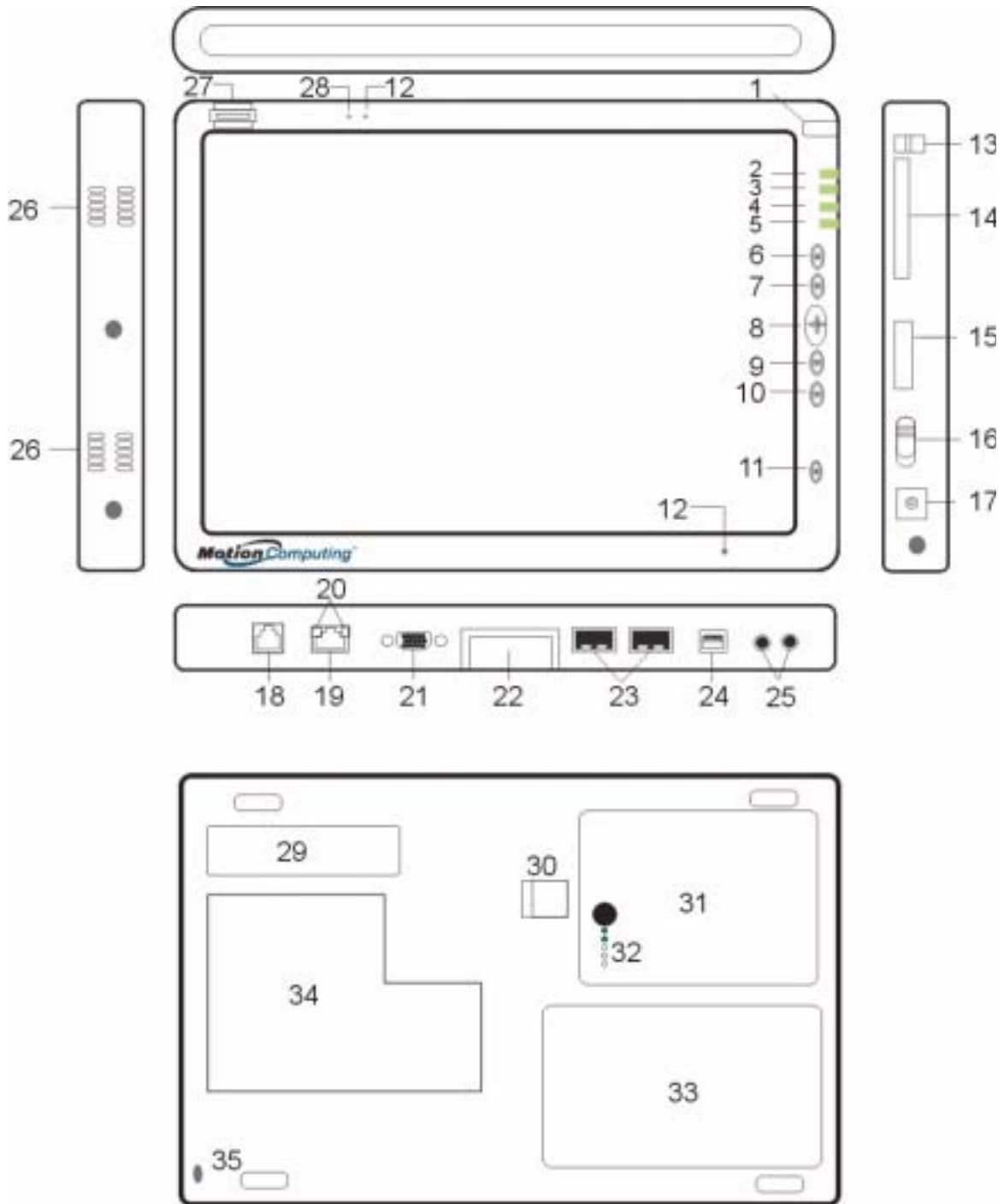


Table 2-1 Tablet PC LEDs, Buttons, Connectors, and Other Components	
1 Pen bay	Storage area for the Motion digitizer pen
2 Power LED	Displays power status
3 Battery LED	Displays battery status
4 Hard Disk Drive LED	Displays Hard Disk Drive (HDD) activity
5 Wireless LED	Displays wireless activity and on/off status
6 Escape button	Primary function: Esc. Secondary function: Alt+Tab
7 Function button	Press this button with another to activate Secondary button functions
8 Five-way directional control button	Primary functions: Scrolls Up/Down/Right/Left + Enter Secondary functions: Left arrow—Shift+Tab; Right arrow—Tab; Up arrow—Page Up; Down arrow—Page Down
9 Hot Key #1	Primary function: Opens the Motion Dashboard Secondary function: Opens the Windows Journal application
10 Hot Key #2	Primary function: Changes the Tablet PC display orientation Secondary function: Opens the Tablet PC Input Panel.
11 Security button	Primary function: Ctrl-Alt-Del; Secondary function: None
12 Microphones (2)	Work at a natural distance; disabled when an external microphone is plugged in
13 Pen tether post	Post to which you can secure the pen with a plastic pen tether
14 PC Card slot	Holds one Type-II PCMCIA card for memory expansion, external Bluetooth cards, etc.
15 Antenna cover	802.11 wireless networking antenna cover; this area does not open
16 Power switch	Turns the Tablet PC on and off; can configure to activate Hibernate or Stand by modes
17 AC power jack	AC power connector for the Tablet PC
18 RJ-11 modem port	Connector for a 56.6K V.90 modem
19 RJ-45/LAN	Standard RJ-45 connector for a 10/100 Mbps network
20 RJ-45 LEDs (2)	Display LAN connection status; blink green and amber for a connection
21 VGA connector	A standard DB-15 monitor connector for an external monitor
22 Docking connector	Connects the Tablet PC with the Motion FlexDock
23 USB ports (2)	Universal Serial Bus; a port for connecting USB devices, such as a storage device, mouse, printer, or digital camera
24 IEEE 1394 port	Connects 4-pin accessories, such as DVD players, optical disc drives, video cameras
25 Universal jacks (2)	Universal jacks for microphone and headset; 3.5mm plug
26 Speakers (2)	Integrated speakers that mute when you connect a headset or external speakers
27 Fingerprint sensor	Swipe-type sensor for scanning fingerprints; used for password management and security
28 Ambient Light Sensor	Measures the ambient light and automatically balances display brightness
29 Product Label	Serial numbers, system certifications marks, and regulatory labels
30 Battery release latch	Releases the battery from the battery bay
31 Battery	Self-monitoring battery that tracks the amount of charge
32 Battery gauge	Displays remaining battery charge
33 Hard disk drive bay	Holds the HDD; 20GB memory (standard); 40GB or 60GB configurations available at time of purchase
34 Memory/mini-PCI access bay	Houses the memory modules and the mini-PCI wireless card; 256MB memory (standard), upgradeable to 2GB
35 Security lock slot	Fits a cable lock for securing the unit to a desk, etc.

**CHASSIS AND
HARDTOP
COVER**

The Motion Tablet PC chassis is constructed of magnesium alloy, which is lightweight, durable, and easy to maintain. The Motion Hardtop Cover is molded of a tough plastic. It snaps over the display, to protect it when the Tablet PC is not in use and can be snapped onto the bottom of the Tablet PC for convenient storage.

DIGITIZER PEN

The Motion digitizer pen is a sensitive, electronic data-entry device designed in conjunction with the Tablet PC display. It contains no batteries and requires no external power. To help prevent pen loss, attach it to the built-in pen tether post on the chassis.

NOTE: For best results, we recommend that you calibrate your pen before using it for the first time. For information about this and other pen procedures, see Chapter 4 of this *User Guide*.

**MOTION
AC ADAPTER**

The Motion AC Adapter has three components:

- AC power adapter (with a right-angled connector)
- Power cord
- AC mini-plug with folding prongs for travel



CAUTION: Use the appropriate AC Adapter with your Motion Tablet PC. This adapter should not be used to power any other electronic devices. If you do so, you may damage the accessory or other device.

**MOTION
BATTERIES**

A standard configuration Motion Tablet PC ships with a 6-cell lithium ion (Li-ion) battery in the battery bay. Fully charged, a new 6-cell battery can power the Tablet PC for 3-4 hours, depending on operating conditions.

Extra batteries are available from Motion Computing. Use only Motion lithium ion batteries in your Motion Tablet PC.

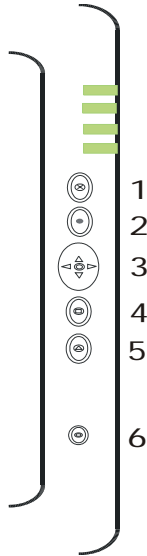


WARNING: To avoid personal injury, handle the battery with care. Do not open, puncture, short, or expose it to fire or water. Keep the battery in an ambient temperature of less than +104° F (+40° C); for example, do not leave it in a closed car in hot weather for an extended time.

NOTE: For more information about the battery LEDs, see the section "Battery Status LEDs" in this chapter; and for more information about battery care, see Chapter 4 of this *User Guide*.

**FRONT PANEL
BUTTONS**

The front panel of the Motion Tablet PC contains six buttons, shown in Table 2-2. Most of these buttons have both primary and secondary functions. In addition, some may be re-programmed for other functions.

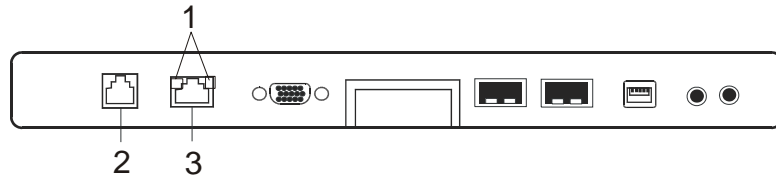


Button	Primary Function	Secondary Function (Press Function + this button)
1 Escape ²	Esc key	Alt + Tab
2 Function ³	Function + other button activates secondary function	None
3 Five-way Directional Control Button ²	Works like the arrow keys on a keyboard. The center of the button works like the Enter key.	Left arrow = Shift+Tab Right arrow = Tab Up arrow = Page Up Down arrow = Page Down
4 Hot Key #1 ^{1 & 2}	Dashboard	Windows Journal
5 Hot Key #2 ^{1 & 2}	Rotates the display.	Tablet PC Input Panel
6 Security ³	Ctrl + Alt + Del (Windows Task Manager). Also used for domain authentication or logon screen.	None

NOTE: ¹Primary function programmable. ²Secondary function programmable.
³Not programmable. For information about programming buttons, see Chapter 4.

**MODEM
AND LAN
CONNECTORS**

The Motion Tablet PC modem and LAN (network connection) communication ports are found on the connector edge, as shown below.



Modem and LAN Connectors: (1) RJ-45 LEDs; (2) RJ-11 Modem; (3) RJ-45 LAN

NOTE: The Motion FlexDock has no built-in modem port. When using a Motion FlexDock, you must connect to the modem port on the Tablet PC through the FlexDock opening designed for this purpose.

- **Modem** (RJ-11 port) — Built-in, V.90 modem that operates at a maximum of 56.6K throughput and has fax capabilities; port supports a standard phone cord connector; connect the modem only to an analog telephone jack, not to a digital telephone (PBX) network jack
- **Ethernet LAN** (RJ-45) — Connects a network, cable modem, or xDSL; contains two status LEDs



CAUTION: Do not plug a standard RJ-11 phone cord into the RJ-45 port or you may damage the RJ-45 LAN port.

TABLET PC CHASSIS LEDs

The Tablet PC front panel (shown in the diagram) and the battery case on the bottom of the unit contain status LEDs, described here.

Tablet PC Front Panel LEDs

The Motion Tablet PC has four front-panel status LEDs:

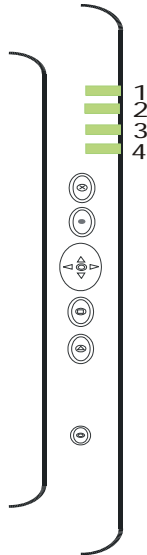


Table 2-3 Front Panel Status LEDs		
LED	Description	Status
1 Power/Stand by	Steady green	Tablet PC is on.
	Flashing green	Tablet PC is in Stand by.
2 Battery Status	See Table 2-4.	
3 Hard Disk Drive	Flashing/On	Some HDD activity
	Off	No HDD activity
4 Wireless Activity	Independently flash green and blue	Wireless is on. Green=802.11 Blue=Bluetooth
	Off	Wireless is off.

Battery Status LEDs

Your Motion Tablet PC is equipped with a “smart” battery provides information about its power status, as described in Table 2-4.

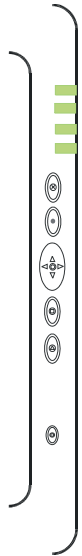


CAUTION: To avoid personal injury, or the risk of fire or explosion if the battery is overheated, wait until the battery cools to room temperature before recharging or replacing it.

NOTE: If the unit is operating on battery power, you can move the pen over the Power/Battery icon (shown here and found in the System Tray at the lower-right corner of the Tablet PC display) to see the number of hours of charge and the percentage of battery charge remaining.



Table 2-4 Front Panel Battery Status LED		
LED	Battery Status	Action
Steady green	Battery 100% charged (AC plugged in)	None
Steady amber	Battery charging (AC plugged in)	None
Steady red	Battery overheated or defective	Wait for the battery to cool. Replace the battery.
Flashing green and amber	Battery discharging abnormally	Replace the battery.
Slow-flashing amber	10% battery charge remaining (AC unplugged).	Immediately charge the battery to avoid loss of data.
<p>NOTE: When the remaining battery charge is 10%, your Tablet PC issues a Low Battery alarm message in addition to the LED warning. For information about modifying this alarm (you can set it to display a message or to produce an audible warning), see Chapter 4 of this <i>User Guide</i>.</p>		
Fast-flashing amber (for only a few seconds)	3% battery charge remaining (AC unplugged)	The Tablet PC issues a Critical Battery alarm and automatically goes into Hibernate mode.
<p>NOTE: Hibernate mode attempts to save data in any open programs to your Hard Disk Drive. When you restart the Tablet PC, it returns to the same system status as before hibernation.</p>		
Off	Tablet PC is unplugged from AC power and the system is running on battery power.	Plug the Tablet PC into AC power if you want to preserve battery power.



Battery Status Gauge



A five-LED battery gauge is located on the battery on the bottom of your Tablet PC. Each LED represents about 20% of available power. You can activate the gauge by pushing the black button next to the LEDs.

In the example shown here, two LEDs are lit, which means the battery has about 40% of its power remaining.

FINGERPRINT READER

The built-in fingerprint reader lets you scan your fingerprint and associate it with a password. This provides a quick and convenient way to log on to your Tablet PC and provides additional password management and protection for your data.

AMBIENT LIGHT SENSOR (ALS)

A built-in light sensor located on the Tablet PC front panel measures the ambient light in the environment. The system then automatically balances the brightness of the Tablet PC display in relation to the surroundings. You can set the brightness level you want from the Motion Dashboard. Using this setting, the system automatically adjusts the display's brightness as the light levels change to bring you the desired display brightness indoors and out.

For optimal battery life benefits and viewability from ALS, we recommend that you set the ALS slider to the mid-point or slightly above or below mid-point. If you set ALS higher than this, you lose some of the battery-savings benefits while gaining minimal improvement in viewability.

Microphones

The two Tablet PC microphones can be set in the Motion Dashboard to a narrow focus (for single-person dictation), wide focus (for a small meeting with several people), or for a conference room setting (for a large meeting, which disables all "Array Processing" or "beam-focusing" software, as described below). These options provide flexibility in a variety of settings.

Technically, the microphones are designed with the following features that help optimize the sound capabilities of your Tablet PC for voice recognition and Voice over IP (VoIP):

- Array Processing or "beam focusing" software — Removes all sound outside the angle of acceptance
- Noise Suppression — Removes background and ambient noise
- Acoustic Echo Cancellation (AEC) — Removes echo caused by microphone pick up of the system's speaker output and prevents feedback

PC Card Slot

The PC Card slot, located on the power switch edge of the Tablet PC, holds one Type-II PC Card for networking, memory expansion, or accessory connection.

1. To install a PC Card, insert it label-side up.
2. To remove a PC Card, push the button next to the slot until it pops out.
3. Push it again to eject the PC Card.

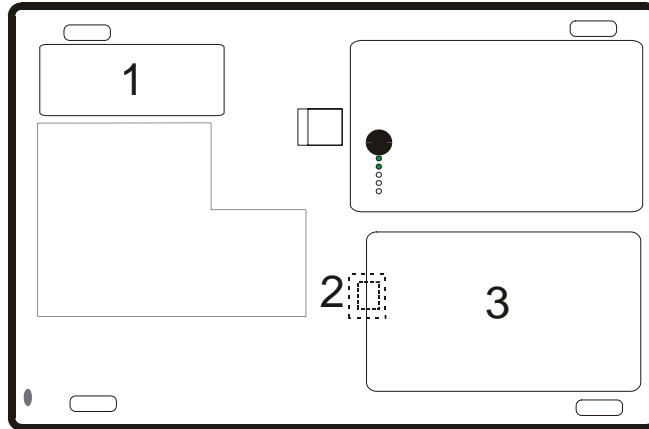
NOTE: Your Tablet PC ships with a plastic blank card in the PC Card slot. When the slot is not in use, we recommend that you leave the plastic blank in place.

Mini PCI Card (Wireless)

Your Tablet PC accepts a mini-PCI card for wireless communications.

LABELS

Most Tablet PC identification and system labels are located on the bottom of the unit. These include serial and model numbers as well as regulatory and approval labels. Some internal components, such as the modem, also contain their own approval labels.



Motion Tablet PC Label Locations: (1) Product Identification, System Labels; (2) Internal Modem with Label; (3) Hard Disk Drive Cover

ACCESSORIES

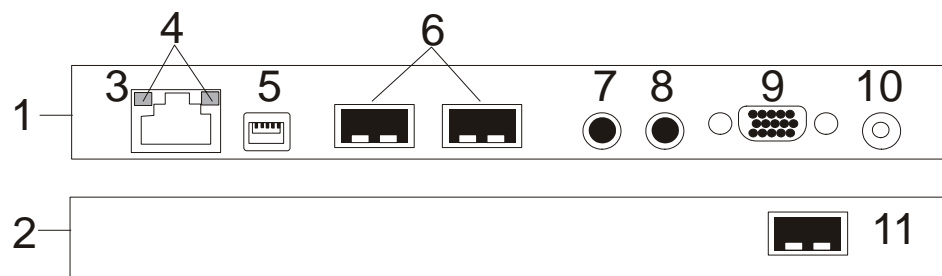
You can order the following accessories from the Motion Computing website at www.motioncomputing.com/accessories.

Motion Desktop Stand

The Motion Desktop Stand is an easel-like device that holds the Tablet PC in portrait or landscape modes. You can open the Desktop Stand to different widths to change the display angle: the wider you open the stand, the less the Tablet PC tilts back.

Motion FlexDock

The Motion FlexDock is a desktop docking station that provides a convenient interface for the Tablet PC. Its components are shown below:



Motion FlexDock: (1) Back of FlexDock; (2) Front of FlexDock; (3) RJ-45/Ethernet; (4) RJ-45 LEDs; (5) IEEE 1394; (6) USB; (7) Audio-in/Microphone Jack; (8) Audio-out/Headphone Jack; (9) External Monitor; (10) Power Jack; (11) USB

- Easily docks and undocks with the Tablet PC
- Adjusts to support the display from 0° to 90° for viewing and writing
- Automatically adjusts the display when you rotate the Tablet PC 90° between Primary Landscape and Primary Portrait
- “Grab-and-Go” capability lets you safely remove the Tablet PC from the FlexDock without turning the system off or putting it in Stand by mode

NOTE: For more information about installing the FlexDock, see Chapter 4 of this *User Guide* or the *Installation Guide* packaged with the FlexDock.

Motion Multi-Unit Battery Charger

The Multi-Unit Battery Charger provides a quick and convenient way to recharge a 3- or 6-cell battery independent of your Tablet PC. It contains two charge bays with status LEDs on each bay and can simultaneously charge two batteries. It can recharge the 3-cell battery to 95% capacity in 1-3/4 hours and the 6-cell battery in 2-1/2 hours; it resumes charging automatically if power is interrupted. For further information about operation of the Battery Charger, see the documentation packaged with the unit.



Motion Hardtop Keyboard

The Motion Hardtop Keyboard combines the functions of a keyboard, stand, and display cover into a single product. It features an integrated USB cable that plugs into the Tablet PC, an integrated pointing device, mouse buttons, and a display angle adjuster. The Hardtop Keyboard is powered directly through the USB cable. The Hardtop Keyboard also snaps onto the bottom of the Tablet PC for convenient storage or onto the top to protect the display.



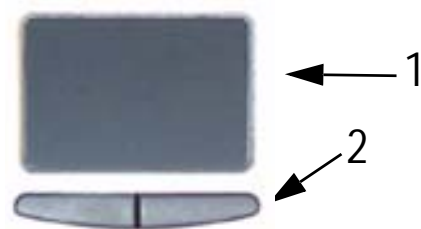
Motion Mobile Keyboard with Touch Pad

The Motion Mobile Keyboard with Touch Pad plugs into any USB port on the Tablet PC or into the Motion FlexDock. The Keyboard features an integrated touch pad and compact size, making it perfect for tight work spaces or travel.



The Touch Pad on the keyboard has a scroll zone (1) similar to the scroll bar along the side of a window.

- Scrolling — Drag your finger up and down to scroll through a document
- Deleting text — Align the cursor over the text you want to select, tap the Entry bar (2) with your finger to place the cursor in the text (the cursor will begin to blink). Tap again to select a single word; double-tap to select a whole line. Select Delete from the keyboard. (Or, tap the right entry bar (2), which opens a drop down menu. Select Cut.)



Wireless Mobile Keyboard

The Wireless Mobile Keyboard is a wireless Bluetooth® accessory for your Tablet PC that enables untethered keyboard use at a distance of up to 10 meters (33 feet).



Motion Hardtop Cover, Portfolios, and Cases

- The Motion Hardtop Cover is molded of a tough plastic. When snapped over the display, it protects the display. It can also be snapped onto the bottom of the Tablet PC for convenient storage.
- The Motion Compact Carrying Case accommodates the Tablet PC, keyboard, extra battery, CD/DVD drive, power adapter, extra pens, CD media, and flash drives.
- The Motion Executive Portfolio is made of high-quality materials with a shoulder strap and foldover cover. It features a sleeve for papers, a business card holder, and pen holder. Snap-in retention clips make it easy to insert and remove the Tablet PC.
- The Motion Slip Case has a clear cover to protect the display, zippered access to side ports, and a hand strap on the back.
- The Clamshell Portfolio has a flip-out stand, pockets, carrying handles, and a shoulder strap and was designed for use with a mobile keyboard.
- The Rubber Edge Protector fits around the edge of the Tablet PC to provide extra edge cushioning and to protect the port connections.

For information about the latest portfolios and cases, visit the Motion Computing website at www.motioncomputing.com.

Motion Optical Disc Drives

Motion offers CDROM and DVD/CDRW combo drives. Depending on which you purchase, these drives offer CDROM, CDRW, or DVD capabilities.

For information about installing these drives, see the documentation packaged with each drive. For general information about Optical Disc Drive software, see Chapter 4 of this *User Guide*.

Memory Upgrade Modules

Additional memory modules improve the performance of your Tablet PC. For information about available memory upgrades, visit the Motion Computing website at www.motioncomputing.com.



NOTE: For information about installing additional memory upgrade modules, see Chapter 4 of this *User Guide* or the *Installation Guide* packaged with the memory module.

Chapter 3

Motion Tablet PC Software

Pre-loaded on your Motion Computing Tablet PC is the Windows XP Tablet PC Edition operating system and additional software applications, drivers, and utilities that help you personalize and make the most of your Tablet PC. This chapter describes some of the applications and software features.

NOTE: For additional information about Tablet PC software applications, go to start>Using Your Motion Tablet PC>Explore the Tablet PC applications.

MOTION SOFTWARE

You may order one of several different software packages with your Motion Tablet PC. The specific CDs you receive in your Tablet PC package depends upon what you order. Some software packages may require no CDs: in this case, all the necessary software is preloaded on your Tablet PC.

Go to www.motioncomputing.com for recommendations about what to order and for a complete list of the currently available Motion Computing software, third-party applications to purchase, and free applications.

IMPORTANT: With certain software packages, additional steps may be required to initialize your Tablet PC. For more information, see the section "Installing Initialization Software" in Chapter 4 of this *User Guide*.

The following software CDs (included with your Tablet PC) are described in this section:

- Motion Operating System Recovery CD
- Motion Utilities and Drivers Recovery CD

IMPORTANT: For the steps required to initialize your Tablet PC, see the section "Installing Initialization Software" in Chapter 4 of this *User Guide*.

Motion Operating System Recovery CDs: Description and Use

These CDs contain a complete re-install of the Windows XP Tablet PC Edition operating system, all drivers, utilities, and applications.

They include Utilities and Drivers Readme.txt and System Recovery.txt files with installation instructions. Use the System Recovery CDs when your system is completely down and you must completely re-install. If possible, back up your data files before running this procedure.

System Repair/Recovery Procedure — In most cases, once initiated, this procedure lets you repair the Tablet PC hard disk drive and retain the original system data, applications, passwords, and settings with no data loss. When no repair is possible, it overwrites your system data. Should the latter occur, you can cancel the procedure before taking any action. In this case, you may want to contact your system administrator for help.

1. If possible, back up your data files.
2. Turn off your Tablet PC.
3. Insert the Motion M1400 Operating System Recovery CD (Windows XP Professional Service Pack 1) into the CD-ROM drive and start the Tablet PC.
4. When prompted, press any key to boot from the CD.
5. On the Setup screen, select ENTER to set up Windows XP.

NOTE: Do not select R=Repair before you execute the End User License Agreement (EULA). If you do, you need to exit this procedure, shut down and restart your Tablet PC, and read/accept the EULA before proceeding.

6. Press F8 to accept the terms of the End User License Agreement.
7. When the next options appear, select from the following:

IMPORTANT: If Windows XP cannot repair your system, this procedure automatically skips to the ESC=Don't Repair (reformatting) option, described below:

- R=Repair option — Installs Windows XP Tablet PC Edition on your system, preserving your system data, applications, passwords, and settings
 - ESC=Don't Repair (reformatting) option — Reformats your hard disk drive. If Windows XP automatically skips to this option (that is, no repair is possible), you must decide whether to reformat now or cancel the procedure. If you decide to reformat, select either Format the partition using the NTFS File System or the NTFS File System (Quick). If you decide not to reformat, select ESC to cancel the procedure.
8. Continue following the onscreen instructions.
 9. After your operating system has been reinstalled, you will be prompted to insert the Motion Utilities and Drivers Recovery CD.

- a. For a repaired system, this process is quick and your system will automatically reboot. If you receive a FarStone® VirtualDrive™ error message, you may need to re-install the VirtualDrive application (described below).
- b. For a reformatted system, this process takes some time as the drivers and utilities are reinstalled. Do not interrupt this process. When the reformatting is complete, your system will automatically reboot. At that point, you may need to install additional software (such as Microsoft Office), as appropriate. You may also want to restore your personal preferences and settings.

Reinstalling the VirtualDrive Application (Optional)

If you previously had the VirtualDrive application installed on your Tablet PC and you get VirtualDrive error messages, perform these steps to reinstall the application.

- i. Go to Control Panel, Add/Remove Programs, and uninstall the VirtualDrive application. You will be prompted to reboot your system.
- ii. Insert the Motion Utilities and Drivers Recovery CD.
- iii. Go to Start>Run and type in "d:\vdrive\vdrive.bat" and press Enter.
- iv. Reinstall the Virtual Drive application from c:\windows\motion\virtualdrive\setup.exe or from the Motion Applications CD.

Motion Utilities and Drivers CD

The Motion Utilities and Drivers CD contains installable drivers and utilities. To install a specific driver or utility, open the Utilities and Drivers Readme.txt file on the Motion CD and follow the instructions.

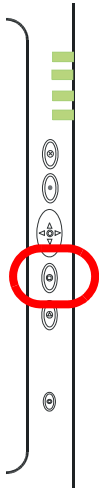
MOTION APPLICATION SOFTWARE

Your Tablet PC contains software applications to enhance its operations, some available exclusively from Motion Computing.

Motion Dashboard

An exclusive Motion Computing design, the Motion Dashboard makes many operations easy to use and puts them in a single location for convenient access.

To display the Motion Dashboard, press Hot Key #1.



**Table 3-1
Motion Dashboard Features**

Feature	Description
Speaker Volume	Available Settings: <ul style="list-style-type: none"> • Mutes the speaker sound • Adjust the speaker volume • Multimedia Optimized—Best equalization setting for sound reproduction from the Tablet PC, CD player, DVD, or sound recorder • Voice Optimized—Best setting for voice reproduction from the Tablet PC speakers • Normal—Best setting for external speakers or headphones • Properties—Adjusts the volume; balances the left and right speakers and bass and treble settings for multimedia applications, such as a CD player, DVD, or sound recorder. Volume Control Options set Playback and Recording for the selected device.
Microphone	The two microphones contain: <ul style="list-style-type: none"> • Array Processing or “beam forming” software—Removes all sound outside an adjustable acceptance angle • Noise Suppression—Removes background and ambient noise • Acoustic Echo Cancellation—Removes echo caused by microphone pick up of the system's speaker output and prevents feedback Available Settings: <ul style="list-style-type: none"> • Mutes the microphone • Adjusts the microphone volume • Narrow Focus—Best setting for dictation, Voice over IP, “voice noisy” environment; the microphones focus is on a spot near the center of the display • Wide Focus—Best setting for small group, conference table, “voice quiet” environment; microphone focus is widened • Meeting/Conference—Best setting for open meeting room; array processing software is turned off • Train—“Teaches” the microphones to detect sounds from a particular location using the “beam forming” software <p>NOTE: The microphones keep their settings until you retrain them or change to another focus, such as Narrow Focus.</p>

Brightness	The Ambient Light Sensor (ALS) built into the Tablet PC detects light in the environment and adjusts the display brightness. Available Settings: <ul style="list-style-type: none"> • Off — Turns off the display back light • Fixed — Maintains a fixed brightness level on the display that remains constant under varying light conditions • Dynamic — Maintains a relative brightness level on the display in varying light settings using the ALS NOTE: For optimal battery life benefits and viewability from the ALS, we recommend that you set the brightness slider to the mid-point or slightly above or below mid-point. If you set the slider higher than this, you lose some of the battery-saving benefits while gaining minimal improvement in viewability.
Orientation	Sets the Tablet PC display orientation (rotation)
External Display	The Tablet PC has a Dual Head Video Controller that can “mirror” the Tablet PC display or extend it to a second monitor or external device, such as a data projector. Available Settings: <ul style="list-style-type: none"> • Mirror Desktop—“Clones” (duplicate) the Tablet PC display on another monitor or projector • Extend Desktop—Projects the display to an other monitor; enlarge overall desktop work space
Power Management	Displays and selects Power Schemes and Power Button options; sets Power Schemes and Alarms; checks the Power Meter and battery gauge; enables/disables Hibernate
Wireless	“On/Off” buttons for the wireless devices built into the Tablet PC Available Settings: <ul style="list-style-type: none"> • Enables/Disables the 802.11/WiFi and/or Bluetooth Wireless Radio • Disables either or both wireless devices at Tablet PC start up (useful in settings that prohibit wireless operations, such as airplanes or medical locations)
Pen & Digitizer	Calibrate the pen to the display. Available Settings: <ul style="list-style-type: none"> • Displays and sets pen and display properties • Pen and Button Options—Changes Tablet PC, pen, and button properties, such as hot-key assignments, right/left handedness, or right-click function
Input Panel	Opens the Tablet PC Input Panel (TIP) for writing or typing
Stand by	Puts the Tablet PC in low-power Stand by mode for a temporary suspension from which you can quickly resume your Windows session.
Help	Displays Motion Dashboard Help

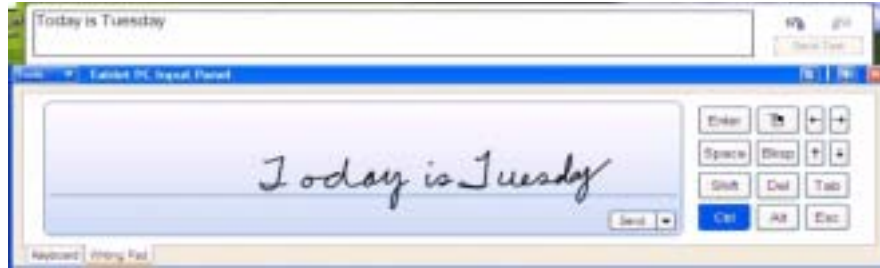
Tablet PC Input Panel (TIP)



To open the Tablet PC Input Panel (TIP), tap the TIP icon located next to the Start button. From this window, you can enter hand-written data, use the on-screen keyboard, or enter information by voice.

The illustration of the Tablet PC Input Panel shows the Text Preview window open. “Today is Tuesday” was handwritten and then automatically transferred to the window as typed text. (You can also tap the Send button to manually send the text to the preview window.) You can select the Text Preview window from the Tools drop-down menu.

NOTE: For more information about the Tablet PC Input Panel, see Chapter 4 of this *User Guide*.



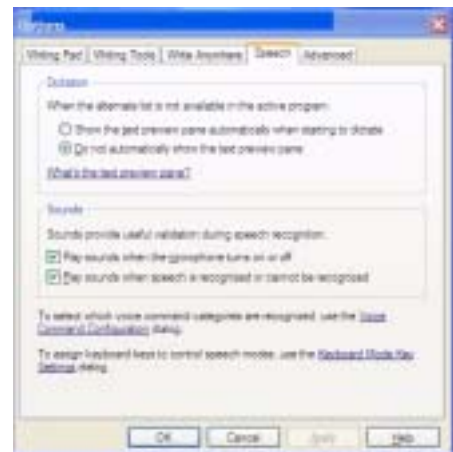
IMPORTANT: To view the text you write or type in the Tablet PC Input Panel, you must open another application, such as Windows Journal, Notepad, Wordpad, or any Microsoft Office applications (ordered separately). Otherwise, your text will be transferred to the Text Preview area (if it is open), but not to another application since none is available to accept the input. If the text preview window is not open, your text will disappear from the display after a few seconds.

NOTE: For security and accuracy when entering passwords or other confidential text, we recommend that you use the soft keyboard on the Tablet PC Input Panel instead of the Writing Pad.

Speech and Voice Recognition

Your Tablet PC is designed to accept and interpret the human voice for dictation as well as for keyboard-equivalent voice commands. The Motion M1400 audio system contains echo cancellation and ambient noise filters for improved speech and voice recognition.

NOTE: For information about setting up speech recognition through the Tablet PC Input Panel, see Chapter 4 of this *User Guide*.



Chapter 4

Using Your Motion Tablet PC

This chapter describes various procedures and functions that your Motion Tablet PC performs.

INITIALIZING MICROSOFT WINDOWS XP

Your Tablet PC comes with pre-installed software applications and drivers, including those for the Windows XP Tablet PC Edition operating system. The first time you start your Tablet PC, you must initialize Windows XP. The steps for initializing the software are described in the following sections.

Required Information

- Computer name (you can create this yourself or obtain one from your system administrator); this should be a unique name

Optional Connections, Equipment, and Information

- Internet access
- Motion AC Power Adapter
- Administrative password
- Description of your computer
- Company name
- Network settings
- Domain name
- Names of the people who will be using this Tablet PC
- Microsoft Office Product Keys (if you are going to install any Microsoft Office products, such as Word, Excel, or PowerPoint)

Windows Initialization Procedure

IMPORTANT: You do NOT need Internet access to initialize Windows. When the Windows initialization procedure prompts you for this information, you can either select “Skip” or the option that lets you set up Internet access later.

1. (Optional) Connect your Tablet PC to AC power. (This ensures continuous power during this initialization procedure and in case the battery is low.)
2. (Optional) Attach a USB keyboard and use the touchpad or keyboard keys (Tab, arrow, Enter, space bar) to select and enter data.
3. Slide the Power switch to start the Tablet PC. After a short time, the “Welcome to Microsoft Windows” screen appears.
4. Tap Next.
5. Set up the dates and currency.
6. Tap Next.
7. Select the time zone.
8. Tap Next. The End User License Agreements (EULAs) for Microsoft Windows XP and for Motion Computing appear.
9. Select “Yes, I Accept” to the End User License Agreement
10. Tap Next.
11. Type in a name for your computer. Enter the name provided by your network administrator or a unique name you make up.
12. (Optional) Type in a description of your computer. Select Next.
13. When asked what your Administrator password is, enter a password of your choice or one that was assigned to you. This will be the password for the Administrator account on your Tablet PC.
14. Select Next.
15. (Optional) Type in the domain name (from your network Administrator). If you do not have a domain name, tap Next.
16. (Optional; you do not need Internet access to initialize Windows) After Windows checks for Internet connection, select Skip to set up Internet access later.
17. Select “Yes, Ready to activate Windows.”
18. Select Next.
19. (Optional) “Ready to register with Microsoft.” Select “Yes.” (You can register now, but you must have Internet access.)
20. Select Next.
21. (Optional) Enter the Registration Information or select Skip. If you enter this information, select Next.
22. (Optional) You may get a message “Unable to connect to the Internet.” Select Skip since you have not set up Internet access.
23. Type in your name in the space provided. Enter at least one name in this space, which will be the name of the User account on your Tablet PC. (If others will be using this Tablet PC, add in their names here [up to a total of five]. You can add users and passwords later through the Windows Control Panel if you wish.)

24. Select Next. This message appears:

Thank you! Congratulations, you're ready to go!

25. Select Finish. This message appears:

Windows XP
Please wait.
Windows is starting up.....

This completes the Windows XP initialization. Please keep reading...

As your system starts up....

As your system starts up, it displays messages, some of which require action, while others do not.

- Windows may discover, load, and install new hardware. When prompted and as appropriate for your system, answer Yes or OK.
- An Automatically Update message may appear. You must be connect to the Internet to update now. You can close this window and update later.
- Tablet PC Tutorials screens are displayed. Run these now or later.

Windows Logon: The Windows logon screen prompts you to “click your user name” (see Step 23). All the user accounts you created are displayed here. Select the user name you want to log on with.

OmniPass Logon Authentication: This OmniPass dialog for the Fingerprint reader, although visible, is not active until you enroll with OmniPass.

- For enrollment information and information about setting up a Windows password for your user account, see the section “About the OmniPass Password Management System” in this chapter.
- For OmniPass Help, right click the OmniPass key icon in system tray and select Help. (If the key icon does not appear, you may need to reboot your system and start the enrollment again.)

Microsoft Office Activation (Optional)

If you ordered the Microsoft Office XP Professional software with your Tablet PC system, all the necessary software it is already installed. To activate Microsoft Office, follow these steps:

1. Open a Microsoft Office application, such as Microsoft Word.
2. A screen appears, prompting you to enter your User name, Initials, Organization, and the 25-character Product Key. The Product Key is printed on the Microsoft Office CD packaged with your Tablet PC.
3. Follow the onscreen messages to activate Microsoft Office.

STARTING/ STOPPING THE TABLET PC

Starting Your Tablet PC

Start the Tablet PC by sliding the Power switch. The Power LED turns green and the Hard Disk Drive (HDD) LED intermittently flashes green. Then Windows XP launches.

When you start the Tablet PC, the Windows XP Tablet PC Tutorials screen appears. If you do not want this to continue to appear, check “Do not show me this again.” We recommend that you run the tutorials, which take just a few minutes. If you do not want to run the Microsoft Tutorials now, you can always return to them by tapping Start>Using Your Motion Tablet PC.

Stopping Your Tablet PC

The recommended way to shut down your Tablet PC is by selecting Start and then Shut Down.

IMPORTANT: You can force a shutdown by pressing and holding the Power switch for about 5 seconds. A forced shutdown should only be used when the system is completely unresponsive to software commands. If you have any applications open or any unsaved work, you will lose it. Windows will not prompt you to save your work if you force a shutdown.

OPENING THE MOTION DASHBOARD

In the following sections, you will be instructed to open the Motion Dashboard. To do this, press Hot Key #1 (see Table 2-2 in Chapter 2 of this *User Guide*) on the Tablet PC front panel.



You can also access Dashboard by first selecting Start>All Programs>Motion Resources>Dashboard.

The Motion Dashboard offers many Tablet PC functions in a convenient location.



CONSERVING POWER WITH STAND BY OR HIBERNATE MODES

Low-power Stand by or Hibernate modes can conserve Tablet PC power. Each preserves your Tablet PC settings so you can resume work where you left off.

- **Stand by** — Greatly reduces Tablet PC power consumption and restarts within a few seconds; the Tablet PC runs on battery if not connected to AC power. Choose Stand by when you plan to return to work within a short time (a few minutes to a few hours) and want to conserve power.
- **Hibernate** — Completely shuts down the Tablet PC to conserve power. It takes slightly longer to restart from Hibernate than from Stand by mode. Choose Hibernate when you plan to stop work for longer periods of time, such as overnight. This setting saves the status of the Tablet PC system to the hard disk drive.

Launching Stand by or Hibernate Modes from the Start Button

1. Select Start>Shut Down.
2. From the pop-up window, tap Stand by or press the Shift key on the keyboard to toggle to Hibernate, and then tap that option.
3. The Tablet PC will then enter Stand by or Hibernate. In Stand by, the power LED flashes green. In Hibernate, all the status LEDs are off.

IMPORTANT: You can put the Tablet PC in either Stand by or Hibernate to swap the battery. See the section “Swapping the Battery” in this chapter.

Launching Stand by Mode from the Motion Dashboard

Open the Motion Dashboard and then tap the Stand by button.

Setting Up Stand by or Hibernate Modes from the Power Switch

When you slide the power switch, by default your Tablet PC shuts down. You can change this setting so that you can enter either Stand by or Hibernate from the power switch.

1. Open the Motion Dashboard.
2. On the Dashboard, under Power Management, tap the down arrow by the Pwr Button.
3. From the drop-down menu, select Stand by or Hibernate, as desired.
4. Select OK.

Restarting from Stand by or Hibernate Modes

To restart from Stand by or Hibernate, briefly slide the Power switch until the Tablet PC display turns on. Tap your user name to resume work.

OPERATING THE MOTION DIGITIZER PEN

The Motion digitizer pen contains internal electronics that let you enter digital ink on the Tablet PC display. Finger-tapping or writing with a PDA stylus has no effect. The pen contains a pen function button, used for right-clicking (like a mouse) and a small opening near the end for attaching it to the pen tether. The pen also comes with replacement pen tips and a replacement tool, shown here. For information about replacing the pen tips, see “Replacing the Pen Tips” in this chapter.



Notations for using the Motion pen are described below:

- Tap — Firmly tap the pen on the Tablet PC display, without pressing the function button on the pen
- Double-tap — Tap the pen twice on the display, without pressing the function button on the pen
- Right-click — Press the function button on the pen and tap the pen on the display (equals a mouse right-click). For more information about using

the pen function button, see the section “Writing with the Pen” in this chapter.

- Press and hold — Press and hold the tip of the pen to the display without pressing the pen function button (equivalent to a mouse right-click)
- Tap and drag — Tap and drag the pen on the display
- Select/Highlight — Tap on the item on the Tablet PC display with the pen to activate the function

Calibrating the Pen to Increase Its Accuracy

Be sure to calibrate your pen the first time you start your Tablet PC, then at other times if the cursor does not seem to line up with the pen tip. Calibration ensures the accuracy of the pen and adjusts the Tablet PC display for each person who uses it. The Tablet PC stores pen settings on a per-user basis.

To open the calibration program:

1. Open the Motion Dashboard and tap Calibrate. Or double-tap the Tablet and Pen Settings icon in the System Tray, located in the lower right-hand corner of the display window. This opens the Tablet and Pen Settings window.



NOTE: This icon may be hidden in the System Tray. Tap the System Tray left-arrow to open all hidden icons.

2. Tap Calibrate while holding the pen in a normal writing manner.
3. Carefully tap the pen point *precisely* in the center of each of the four calibration crosshairs as they appear.
4. Rotate the Tablet PC display and repeat this for each orientation (0°, 90°, 180°, or 270°).



Hints for Writing with the Pen

The first time you pick up the pen, you will notice it is lightweight (it has no internal battery), has a plastic tip, and contains an elongated button that is called the “function button.”

- You can hold the pen like any other writing tool, except you may want to place your fingers on either side of the pen function button so you do not inadvertently press it as you write. Pressing the function button while tapping the pen on the display is like right-clicking with a mouse and will launch pop-up menus or may otherwise interfere with your writing or drawing.

- Practice pressing the pen function button with both your index finger and thumb to see which you prefer.
- Relax your grip. Only a light touch is needed to write with the pen.
- With a little practice, you will learn how to tap on the Tablet PC display to activate buttons and menus.
- The more precise your handwritten input, the more accurate the Tablet PC will be in converting it to text. You can use printed or cursive handwriting, but a mixture of upper and lowercase letters works best.
- When you hold the pen over the Tablet PC display, a pointer (small dot) appears under the pen tip on the display and moves with the pen on the display.
- To select something on the display, line up this pointer before you touch (tap) the pen to the display surface. The digitizer under the Tablet PC display reads the position of the pointer, not where you touch the pen to the display.



CAUTION: Do not write on the Tablet PC display with ink pens or other sharp objects that could damage it. Do not use permanent markers that may damage the display.

A comparison of the pen and mouse operations is made below:

Table 4-1 Mouse versus Pen Actions	
With a Mouse	With the Digitizer Pen
Point and click	Point and tap the pen on the display.
Double-click	Double-tap the pen on the display.
Click-and-drag	Tap-and-drag the pen on the display.
Right-click	Press the pen button while tapping, or press and hold the pen on the display.

Ending Accidental Right-Clicks

If you find that you accidentally press the pen button when you write, you may want to deactivate the pen button. (You will still be able to open right-click menus by pressing and holding the pen against the display surface.)



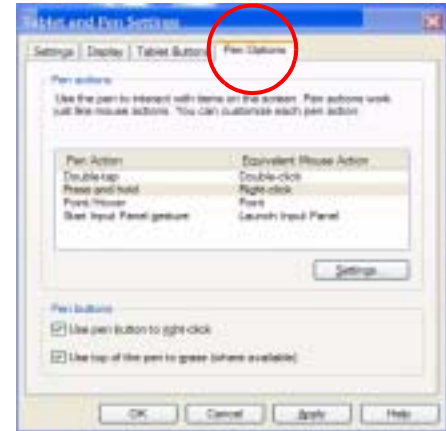
1. Double-tap the Tablet and Pen Settings icon in the System Tray, located in the lower right-hand corner of the display window. This opens Tablet and Pen Settings. (You can also access this through the Windows Control Panel.)

2. Select the Pen Options tab.
3. Uncheck the option “Use pen button to right-click.”
4. Tap Apply.

Adjusting Menu Locations for Left-Handed Use

For convenience, you can adjust the “handedness” and menu locations for left-handed use.

1. Repeat Steps 1 and 2 above.
2. Select the Settings tab.
3. Change the Handedness or Menu location, as desired.
4. Tap Apply.

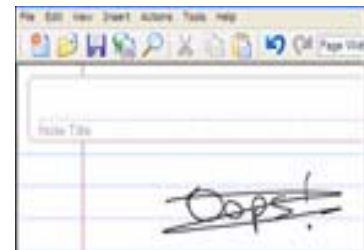


Pen Gestures

You can use pen gestures to quickly perform the following actions:

NOTE: Gestures work primarily in the Tablet PC Input Panel and the Write Anywhere feature. For more information about gestures, gesture symbols, and for handwriting tips, open the Tablet PC Input Panel, Tools menu, then select Help, Help Topics. Under Tips and Tricks, select Tips for entering text. You will find a Gesture reference.

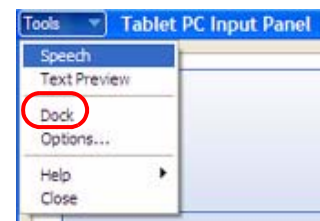
- **Open the Tablet PC Input Panel** — Holding the tip of the pen above the screen, quickly move the pointer back and forth several times.
- **Backspace** (erase the previous character) — Quickly draw a right-to-left line on the display surface
- **Erase** — Draw a short, wide “Z” from left to right across what you want to erase. (It may take some practice to master this gesture.) The erase gesture works in the Windows Journal, Tablet PC Input Panel, and the Write Anywhere (an option of the Tablet PC Input Panel).



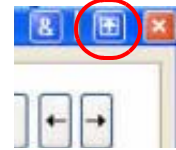
HINTS FOR OPTIMIZING YOUR DISPLAY WINDOW

To free work space and enlarge your writing area, you can optimize your Tablet PC display in these ways:

- Move the Tablet PC Input Panel anywhere on the display— From Tools, uncheck Dock. This lets you drag the input panel anywhere on the display.



- Hide the Input Panel — Select the up arrow on the Input Panel to hide the panel
- Enlarge the Preview window — From Tools, tap Options, and then tap Two lines.
- Relocate the taskbar anywhere on the display — From Windows Control Panel, tap Taskbar and Start Menu (Classic View) or double-click Appearance and themes (Category View) and then tap Taskbar and Start Menu. Uncheck the box beside Lock the taskbar. Tap OK and close Control Panel. Now place your pen inside the Taskbar and drag it to the sides or top of the display.
- Change the amount of delay to transfer writing, or the thickness of the ink — From Tools, select Options.



NOTE: For more information about Tablet PC Input Panel functions, see Tools>Help on the Tablet PC Input Panel window.

MAKING BEST USE OF THE TABLET PC INPUT PANEL

The Tablet PC Input Panel Keyboard and Writing Pad let you:

- Enter information in other input fields, such as passwords
- Hand write or type entries in Journal documents
- Write or type e-mail messages



1. Open the Tablet PC Input Panel by tapping the icon, shown here.
2. With another application active, such as a password entry field, a Journal document, or Outlook, write or type the desired entry on the Input Panel window.
3. By default, after a short delay, your handwriting or typing will be automatically sent to the active program.

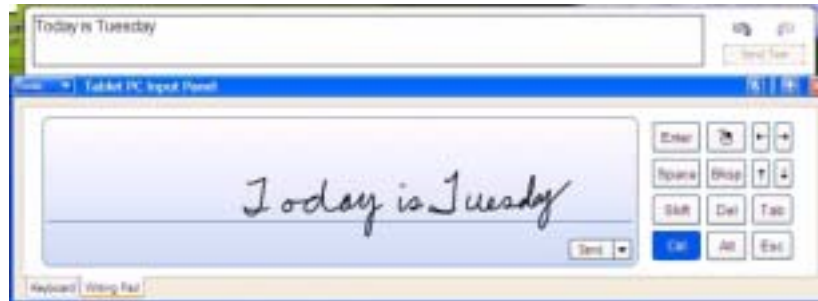
HINTS FOR WORKING WITH THE INPUT PANEL

Here are some other hints about the Tablet PC Input Panel:

- Disappearing text — If you do not open an active application or the Input Panel Preview window, your writing or typing will disappear from the display in a few seconds. Open an application (such as Microsoft Word) or the Preview window to accept your text.
- Sending drawings — While probably not the best application for drawings, you *can* send them from the Input Panel to some applications (for example, Wordpad or Microsoft Word). However, they do not transfer to the Text Preview window. If you draw from the Input Panel with the Text Preview window open, Windows XP tries to interpret the drawing as text and the results are unpredictable.
- Entering passwords — For security and accuracy, we recommend that you use the keyboard on the Input Panel instead of writing this confidential information where it is clearly visible.

Input Panel Text Preview Window

The Tablet PC Input Panel Writing Pad has an optional Text Preview window (opened from the Tools menu) that lets you see a text transcription of what you have written before you send it to an active application. You can send your text to this preview window at any time by tapping Send. Otherwise, there is a built-in delay to send the text. (You can change the delay period from the Tools>Options menu from 1/4 second to 10 seconds.)



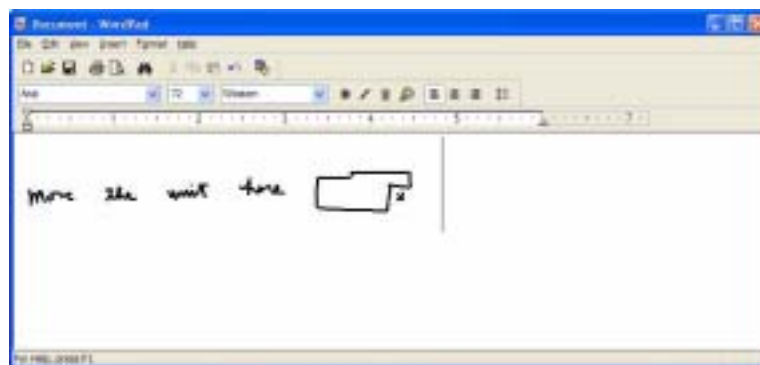
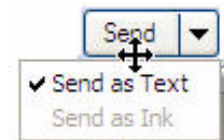
“Sending as Ink” (Handwriting and Drawings) from the Input Panel

To transfer ink input to another application:

1. Open the Tablet PC Input Panel.
2. Close the Text Preview window by deselecting it in Tools.
3. Open an application, such as Notepad, Wordpad, or Microsoft Word (or any Microsoft Office application).

NOTE: Without a second application open to accept the ink input, the input will disappear from the Tablet PC Input Panel.

4. Tap the down arrow beside Send.
5. Enable Send as Ink. (If the application you have open does not accept ink input, this option will be grayed out, as shown here.)
6. Create the text or simple drawing you want to send as ink.

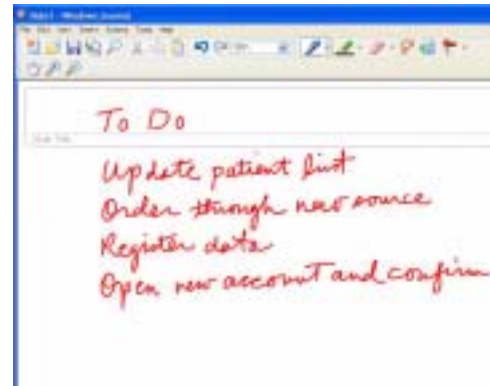


NOTE: To increase the size of the text and drawings, highlight these on screen, then change the font size. Wordpad and Notepad do not allow you to reset the default font size, but you can increase the font size in the manner described here.

ELIMINATING PAPER WITH WINDOWS JOURNAL

Windows Journal offers these note-taking capabilities:

- Search — Look for a handwritten or typewritten word in all your Journal Notes
- Organization — Use color, and/or titles to arrange information
- Versatility — Draw diagrams and charts, copy and paste information between documents, convert handwriting to text



CREATING FORMS AND EDITING THEM IN WINDOWS JOURNAL

You can create forms or edit documents from many formats (such as Word, PowerPoint, Excel, Adobe® Acrobat) by creating a Journal Template. You can then write on your new “form,” exchange edits with others, or write on them during a presentation.

1. Create or open the desired document on your Tablet PC.
2. Tap Print.
3. Select the Journal Note Writer as the printer.
4. Tap Print.
5. On the Save As screen, type in a name for the document.
6. Tap Save. By default, this saves your document as a Windows Journal template (.JNT file) to My Documents/My Notes.

NOTE: Windows Journal may take a few minutes to save, but even multi-page documents will convert to a Journal Note Writer file.

7. If Windows Journal does not open your document automatically (a option on the Save as page is checked to “View note” after printing), then you need to open your Journal document manually.
8. Write with your pen on this document as you would any other Journal document (fill in your “form” or make your annotations).
9. Save your document with a new file name to preserve your edits.

You can reuse and save this document as many times as you want.

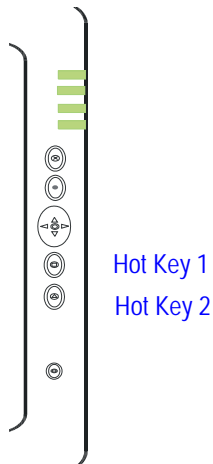
HAVE STICKY NOTES HANDY FOR JOTTING DOWN INFORMATION

Sticky Notes provide a convenient way to store information like names, phone numbers, simple maps, or other information that you would normally put on a paper note. And since they are electronic, you can export them to other programs. Sticky Notes are kept in a numbered stack that you can browse through and discard when you are through with them.

They can also be used to record voice notes (although you cannot drag the voice notes to another program or the desktop).



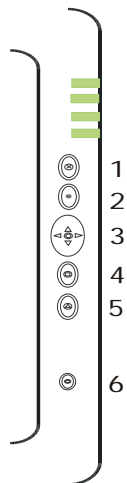
CHANGING SCREEN ORIENTATION



To change the display orientation:

- From the Motion Dashboard
 1. Press **Hot Key #1** on the Tablet PC chassis to open the Motion Dashboard.
 2. Select the Orientation: 0°, 90°, 180°, or 270°
- From the Tablet PC chassis
 1. Press **Hot Key #2** on the Tablet PC chassis. Each time you press the key, the display rotates 90°.
 2. Rotate the display to the desired orientation.
- From the Tablet and Pen Settings Screen
 1. Tap the Tablet and Pen Settings icon on the System Tray, located at the bottom right of the display window. Or, go to the Control Panel and select the Tablet and Pen Settings icon.
 2. From the Tablet and Pen Settings window, select the Display tab.
 3. Tap the down-arrow next to Orientation.
 4. Select the desired orientation: Primary landscape, Primary portrait, Secondary Landscape, Secondary portrait.

CUSTOMIZING BUTTONS



You can customize the Tablet PC buttons so they perform the functions that you want. The default button settings of all the buttons are described in Chapter 2 of this *User Guide*.

- 1-Escape button (Secondary function is programmable)
- 2-Function button (not programmable)
- 3-Five-way directional control buttons (Secondary functions of each key are programmable)
- 4 & 5-Hot Keys 1 & 2 (Primary and Secondary functions are programmable)
- 6-Security (Ctrl+Alt+Del) (not programmable)

To change the default button properties:

**AMBIENT LIGHT
SENSOR (ALS)**

The Motion Tablet PC Ambient Light Sensor (ALS), located on the front panel, detects light in the environment. When enabled, it adjusts the display brightness to changing light conditions. ALS maintains display viewability and can increase battery life as the system optimizes the display backlight in different lighting conditions, thus reducing power consumption whenever lighting conditions allow.

NOTE: For optimal battery life benefits and viewability, we recommend that you set the brightness slider to the mid-point or slightly above or below mid-point. If you set the slider higher than this, you lose some of the battery-saving benefits, while gaining minimal improvement in viewability.

**SETTING
“FIXED”
DISPLAY
BRIGHTNESS:
ALS OFF**

To set the display to a fixed level (ALS is off):

1. Open the Motion Dashboard.
2. Under Display, tap the radio button beside Fixed.
3. Move the slider until the backlight on the Tablet PC display is at the desired level.



The system will keep the same brightness level at all times; that is, it will not adjust the display brightness in changing ambient lighting. This may sacrifice viewability

NOTE: In low-light conditions, the “Fixed” brightness setting may keep the display brighter than is needed for viewability. Keeping the brightness always at the same level may also use more battery power than necessary.

**SETTING
“DYNAMIC”
DISPLAY
BRIGHTNESS:
ALS ON**

To set the display so that the system adjusts the brightness to the desired level under changing lighting conditions while maintaining viewability (ALS is on):

1. Open the Motion Dashboard.
2. Under Display, tap the radio button beside Dynamic.
3. Move the slider until the backlight on the Tablet PC display is at the desired level. The system will automatically adjust the display brightness in changing ambient lighting conditions.

NOTE: In low-light conditions, the “Dynamic” brightness setting keeps the brightness at an optimal level for viewability. It dims the display, as appropriate, which conserves battery power.

**TURNING THE
DISPLAY
BACKLIGHT ON
AND OFF**

To turn the display off:

1. Open the Motion Dashboard.
2. Tap Off.
3. To turn the display back on, wave your pen over the display or press any key on the keyboard.

KEEPING TRACK OF YOUR BATTERY POWER

Reading Battery Power from the Tablet PC Display

To check the power level while you are on battery power, move the pen over the Power/Battery icon, shown here, in the System Tray at the bottom-right corner of the Tablet PC display. This displays the number of hours of battery power and the percentage of battery power left. (The blue area on the battery icon shrinks as the battery runs down.)



Reading Battery Power from the Battery Gauge

Turn the Tablet PC over and press the battery gauge button. Each LED represents about 20% of battery capacity. If all five LEDs are green, the battery is fully charged.

Reading Battery Power from Motion Dashboard

The Motion Dashboard also has a battery power gauge that shows the remaining battery charge.

Reading Battery Power from the Power Meter

- Right-click on the Power/Battery icon in the System Tray, located in the lower right-hand corner of the display window (only visible if you are running on the battery); Tap Adjust Power Properties. Select the Power Meter tab to see the remaining power.
- From the Windows Control Panel (Classic view), double-click Power Options. Or (Category View), double-click Performance and Maintenance, Power Options.

CREATING NEW POWER SCHEMES FOR SPECIAL SITUATIONS

Creating a New Power Scheme

The Tablet PC is configured with a default power scheme called “Motion Computing Optimized” that helps performance and battery life. You may want to create additional power schemes for other work scenarios or for special situations.

1. From the Motion Dashboard, open Power Options Properties. Or, go to the Control Panel and select Power options (Classic view); or (while operating on battery) right-click the Power/Battery to display Adjust Power Properties/Open Power Meter.
2. Tap Adjust Power Properties to open the Power Options Properties.
3. The window opens to the Power Schemes tab.




4. Change the settings to the desired power configuration.
5. Tap Save As and enter a name for the new scheme.
6. Tap Apply.

NOTE: We recommend that you create new power schemes instead of overwriting the default (Motion Computing Optimized) so you can reactivate it later.

Setting Up Max Battery Mode for Additional Power Savings

Max Battery mode prolongs the battery's charge.

1. Right-click on the Power/Battery icon in the System Tray, located in the lower right-hand corner of the display window. Tap Adjust Power Properties in the menu. This opens Power Options Properties. Or, go to the Control Panel and select Power options. 
2. Under Power Schemes, tap the down arrow to display a list of schemes.
3. Select Max Battery as your power scheme.
4. Tap apply.

CHARGING THE BATTERY


When you connect the Tablet PC to AC power with the battery installed, the system automatically charges the battery until it reaches full charge.

The Battery Status LED is amber while the battery is charging and changes to green when fully charged.



WARNING: To avoid injury, be sure to stay within the recommended temperature range when charging the battery. Wait until it cools to room temperature before recharging or replacing it with another battery. See the documentation that came with the battery charger for more information.

To charge the battery:

1. Plug the AC power adapter into the Tablet PC, then into a wall outlet or power strip. (Completely recharging the battery may take up to two hours, although the battery reaches an 80% charge in much less time.)
2. Turn the Tablet PC over to see the battery gauge on the bottom of the Tablet PC and press the button next to the battery gauge. If all five LEDs are green, the battery is fully charged. Or, move the pen over the Power/Battery icon to display battery power resources. (The blue area on the battery icon shrinks as the battery runs down.) 

SWAPPING THE BATTERY

You can swap the battery while the system is powered on, with or without having the Tablet PC plugged into an AC power outlet.

1. If the Tablet PC is running, save all active files.
2. Go to Start>Turn Off Computer.

3. When the Turn Off Computer window appears, press the Shift key on your external keyboard or tap Shift on the Tablet PC Input Panel keyboard to change the option from Stand by to Hibernate.

IMPORTANT: You can put the Tablet PC in either Stand by or Hibernate mode to swap the battery:

- If you choose Stand by, the unit is designed to maintain your system for up to 30 seconds while you swap the battery. However, you may have less than 30 seconds to swap the battery because the settings and programs you have running drain power quicker than this. You should save any data before putting the unit in Stand by to swap the battery.
- If you choose Hibernate, you have unlimited time to swap the battery. Hibernate saves the status of the Tablet PC to your Hard Disk Drive so you can resume operations later.
 4. Tap Hibernate or Stand by. The Tablet PC displays that it is “preparing to standby or hibernate.”
 5. Wait until the system shuts down. In Hibernate, all LEDs are off; in Stand by, the Power LED flashes.
 6. Push the battery release latch on the bottom of the Tablet PC to eject the internal battery.
 7. Insert the new battery until you hear the latch click, which ensures the new battery is correctly seated.



CAUTION: To avoid damage to the Tablet PC, install only Motion Computing batteries, which are specially designed for the Tablet PC.

DISPOSING OF USED BATTERIES

The Tablet PC contains a lithium ion (Li-ion) battery that should be disposed of at a hazardous materials recycling center when it is no longer serviceable. Do not throw it in a waste receptacle where it will be sent to a landfill.

BATTERY AND POWER MANAGEMENT HINTS

- Use AC power whenever available to lengthen the battery’s usable life. The battery will charge automatically as you run on AC power, so leave the battery in the Tablet PC while you are working.
- Use AC power when installing software or writing to a CD and, for best performance, when using a DVD player.
- When using battery power, if you leave the Tablet PC unattended, place the system in Stand by or Hibernate.
- Keep in mind that the display, processor, PC Cards, wireless cards, and accessory drives all draw on the battery, so adjust properties and disable unused accessories and PC Cards when operating on battery power.
- When running on battery, adjust the power mode and display brightness to lower settings to prolong the battery life.
- Enable the Ambient Light Sensor (ALS) on the Motion Dashboard. See the section “Saving Battery Power with the Ambient Light Sensor.”

SAVING BATTERY POWER WITH THE AMBIENT LIGHT SENSOR

Under certain lighting conditions, when the Ambient Light Sensor is enabled, it may automatically dim the display back light, thus saving battery power. The power savings depends on a combination of the ALS setting (on the brightness slider) and the ambient light in the environment.

NOTE: For optimal battery life benefits and viewability, we recommend that you set the brightness slider to the mid-point or slightly above or below mid-point. If you set the slider higher than this, you lose some of the battery-saving benefits, while gaining minimal improvement in viewability.

ADDING MEMORY TO IMPROVE SYSTEM PERFORMANCE

Use only Motion memory modules obtained from Motion Computing to upgrade the factory-installed memory.

Supported Memory Configurations M1400

Base Memory-Slot A**	Base Upgrade-Slot B**	Total Memory
256MB	256MB	512MB
	1GB	1.2GB
512MB	512MB	1GB
	1GB	1.5GB
1GB	256MB	1.2GB
	512MB	1.5GB
	1GB	2GB

NOTE: The Motion M1400 has its base memory factory-installed in Slot A. If you install/reinstall only a single memory module, always install it in Slot A for best performance.



WARNING: When performing the following tasks, turn off your Tablet PC, unplug the AC power connection, and remove the battery. Ground yourself by touching a grounded conductive surface, such as a device or appliance with a grounded, three-pronged plug. Avoid touching the pins and leads on the memory module and the internal circuitry of the Tablet PC.

1. After you disconnect power, unscrew the L-shaped cover from the bottom of the Tablet PC.
2. If you are replacing a module, release the clips on each side of the module and lift to remove it.
3. Align the pins on the Memory Upgrade module with the receptors on the slot.
4. Gently push the new module into the slot at a 25-degree angle until it is firmly seated; then rotate it into place.
5. Replace the external cover and install the two screws.



**INSTALLING
OPTICAL DISK
DRIVES**

For information about installing your Optical Disk Drive, see the documentation packaged with the drive.

**OPTICAL DISK
DRIVE
SOFTWARE**

Software for the CDROM — Does not require any special software drivers to operate as a standard CDROM device

Software for the DVD/CDRW Combo drive — Requires CD writing software to write onto a CDR/RW disc for CD authoring. While Microsoft Windows XP includes CD writing features and may be sufficient for your needs, the additional CD writing software (provided with the drive) contains advanced features beyond those offered by Windows XP. In addition, the DVD/MPEG software (also provided with the drive) is required to view video DVDs.

MIRRORING OR EXTENDING YOUR DISPLAY

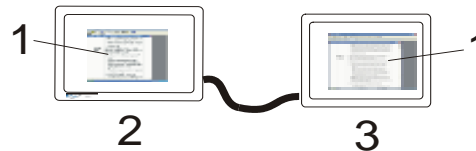
The Tablet PC has a Dual Head Video Controller that lets you mirror the Tablet PC display or extend it to a second monitor or external device, such as a projector.

Connecting the External Monitor/Data Projector and Tablet PC

1. Plug the VGA monitor cable into the VGA port on the Tablet PC or Motion FlexDock.
2. Then, connect the external monitor or data projector to a power outlet and turn it on. Windows XP will recognize the external monitor or data projector and search for a driver.
3. If necessary, install the driver from the CD supplied by the monitor's manufacturer.

Setting Up a Mirrored Desktop

Use this feature to connect an external projector for presentations.



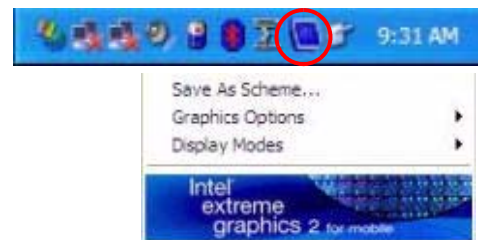
Mirrored Desktop Example: (1) Word Documents; (2) Tablet PC; (3) External Monitor

NOTE: The resolution and orientation of the external monitor will be the same as the Tablet PC display.

- Open the Motion Dashboard.
- Select the Mirror Desktop radio button under External Display. This setting automatically creates an identical display on the external monitor.

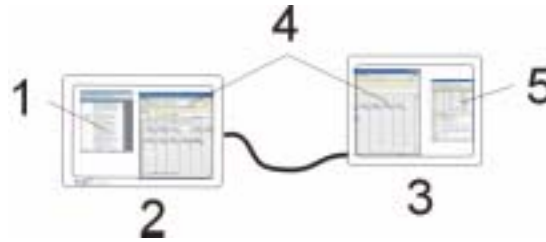


NOTE: You can also tap the Intel(R) Extreme Graphics icon, in the System Tray at the bottom right of the Tablet PC display (or found in the Windows Control Panel), and the Extreme Graphics pop-up menu appears.



Setting Up an Extended Desktop

Use this feature to when you want multiple applications open on separate monitors, for example, your email and Microsoft Word.



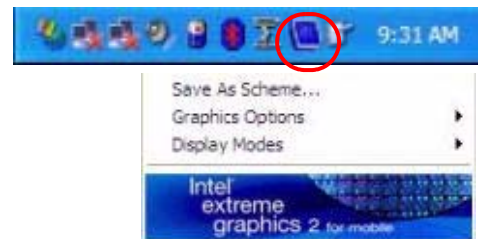
Extended Desktop Example: (1) Word Document; (2) Tablet PC; (3) External Monitor; (4) Spreadsheet; (5) E-mail

a. Open the Motion Dashboard.

b. Select the Extend Desktop radio button under External Display. This setting automatically extends the Tablet PC display to the external monitor.



NOTE: You can also tap the Intel(R) Extreme Graphics icon in the System Tray at the bottom right of the Tablet PC display (or found in the Windows Control Panel) to open the Extreme Graphics pop-up menu



SETTING UP A WIRELESS CONNECTION

Wireless network access points are available in airports, public businesses, such as coffee shops, as well as in private companies. With the proper hardware, you can set up a wireless access point at home. Each access point may provide various levels of security and may require passwords and/or fees for connection.

Although wireless access is available in public areas, your ability to use the wireless access point depends on the following conditions:

- Distance from the access point
- Ability to connect to the access point
- Service rights to it (which may require an account fee, user name, password, an/or network setup through an administrator)



WARNING: FAA regulations require that you disable any wireless connection when traveling by air. If the Wireless LED on the front of the Tablet PC is off, *internal* wireless communications are disabled.

To set up a wireless connection through the Motion Dashboard:

NOTE: The Tablet PC antenna should not be covered by your hand when making a wireless connection.

1. Open the Motion Dashboard and make sure that Enable 802.11 Wireless Radio is checked.
2. Under Wireless Operation, tap Properties.
3. On the Wireless Network Connection Properties screen, tap the Wireless Networks tab.
4. From Available Networks, choose a network (an access point).
5. Tap Configure. The access point you selected should appear in the Network name (SSID) description.
6. Tap OK.
7. Tap OK again to complete the setup of the wireless connection.



NOTE: To complete the wireless connection, you may need to enable Wired Equivalent Privacy (WEP), Extensible Authentication Protocol (EAP), or other settings before the wireless network will connect. This may require you to add a network name (SSID) and Network key and/or to authenticate access (by password or other means). In a corporate wireless network, contact your System Administrator for these settings. For a home network, follow the instructions that come with your wireless access point. For other wireless access points that are available through third-party service providers (such as a wireless telephone service), contact the appropriate service provider for information.

To set up a wireless connection through the Control Panel:

1. Open the Control Panel and tap Network Connections.
2. Make sure the Wireless Network Connection is enabled. (If it is not, right-click on the connection and tap Enable.)
3. Right-click Wireless Network Connection.
4. Tap View Available Wireless Networks.
5. Tap Advanced.
6. Repeat Steps 3-7 in the previous procedure.

**BLUETOOTH
WIRELESS
RADIO
INSTALLATION
AND SET UP**

Built into your Motion M1400 Tablet PC is a Bluetooth wireless radio, part of an emerging technology of products designed to eliminate cables through a low-powered, short-distance personal area network. Bluetooth was designed to provide wireless operations between devices such as keyboards, mice, and printers as well as Tablet PCs and cellular phones.

Motion Computing and its Bluetooth partners have worked to ensure a positive experience with this technology, as well as to ensure Bluetooth interoperability. In doing so, the following operating issues have been found:

- When simultaneously operating Bluetooth wireless and 802.11 wireless, interference between these wireless technologies impacts Bluetooth performance. This is most noticeable with the transfer of large amounts of data, such as file transfers, printing large documents, or using a Bluetooth device for audio.
- Bluetooth audio support for the M1400 Tablet PC is currently based on Bluetooth technology that has not yet been fully developed for speech recognition. Therefore, for speech recognition, we recommend that you do not use a wireless Bluetooth headset.
- Because Bluetooth is a relatively new technology, some cross-device compatibility issues may occur. If you are having problems with interoperability of Bluetooth devices, contact the manufacturer of your Bluetooth device and check its compatibility with the Bluetooth software installed on your Tablet PC.

The next sections contain general information for setting up a Bluetooth device. For information about a particular Bluetooth device, be sure to read the manufacturer's documentation, visit their website, or select Help.

Installing the Bluetooth Software

IMPORTANT: To operate your Bluetooth device, first install the Bluetooth software, which is part of the Tablet PC software image. No separate installation CD is required.

1. With your pen, tap Start>All Programs>Motion Resources>Bluetooth>Bluetooth Readme.
2. Follow the steps in the Readme to install and configure the Bluetooth software. When the installation is complete, a white Bluetooth icon appears the System



Set Up a Device (Bluetooth Mouse)

IMPORTANT: When installing Bluetooth devices, follow the steps in this procedure before installing any software that came with the device. You may need to install application software for the device at the end of this procedure. However, do not install new Bluetooth software.

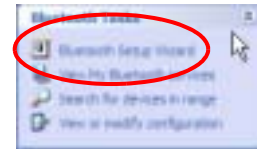
1. Check that the wireless device you are configuring has properly-installed new or fully-charged batteries.
2. Place the device in “Discoverable mode,” which allows the Tablet PC’s internal Bluetooth card to “find” the device. This information can be found in the device’s documentation.

NOTES ABOUT DEVICE DISCOVERY: Some devices require that you press a button on the device or keyboard keys to put them in the “discoverable” mode. For example, the mouse in this example requires pressing the “Connect Channel” button on the bottom of the mouse; while a Bluetooth keyboard may require pressing a key sequence on the keyboard or an On/Off or reset button.

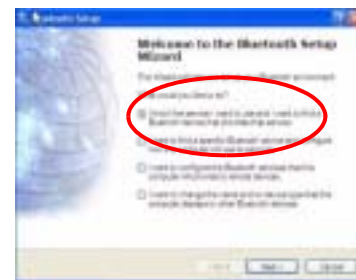
3. Start the Bluetooth device interface by double-tapping the “My Bluetooth Places” icon in the System Tray or in the Start menu.



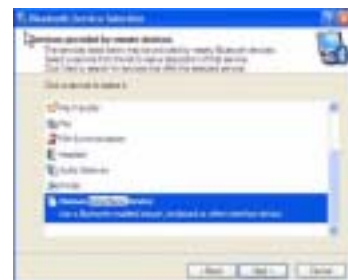
4. Under Bluetooth Tasks, tap the Bluetooth Setup Wizard.



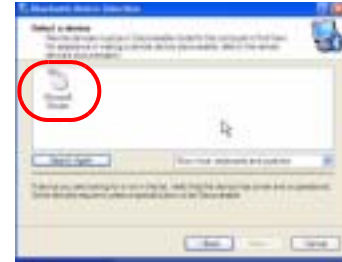
5. When the Welcome to Bluetooth Setup Wizard appears, tap the radio button beside the appropriate option. In this example, tap “I know the service I want to use and I want to find a Bluetooth device that provides that service,” the first option.



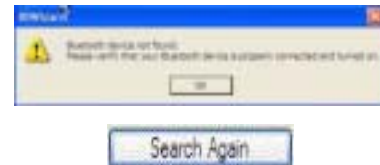
6. Tap Next. The Bluetooth Service Selection window appears. On this window, scroll through the list of services and highlight a service. In this example, scroll down the list and highlight Human Interface Device (HID) to set up a wireless mouse.



7. Tap Next. After a few moments, when the Tablet PC discovers the Bluetooth device (the mouse), the Device Selection window appears and displays the Bluetooth mouse. Go to Step 8.



IMPORTANT: Device discovery may take several attempts. During that time, you may receive a message such as the one shown here. Tap Search Again to continue the discovery process.



IMPORTANT—STEPS TO TAKE IF THE DEVICE IS NOT DISCOVERED:

If the Tablet PC fails to detect the Bluetooth device after what you consider a reasonable number of attempts, do the following:

- If the Bluetooth icon in the system tray is red, open the Motion Dashboard and check the Enable Internal Bluetooth Wireless Radio button.
- Make sure the batteries in the Bluetooth device are new or fully charged and are installed correctly.
- Be sure the device is in discoverable mode. Read the instructions that came with the device or visit the device manufacturer's website for information and for other troubleshooting tips. Perform the steps that put the device in discoverable mode.
- Check to see if other Bluetooth devices are in range and can be discovered by tapping My Bluetooth Places>Bluetooth Tasks>Search for devices in range. If other devices are discovered, a problem may exist with the Bluetooth device you're trying to install.

If the Bluetooth card in the Tablet PC still fails to detect the Bluetooth device, contact the device manufacturer or visit their website for assistance.

8. When the device is discovered (see Step 7), highlight the device and tap Next.



9. When the Bluetooth Setup Wizard Completion Page appears, tap Finish. Windows now installs software for the device.



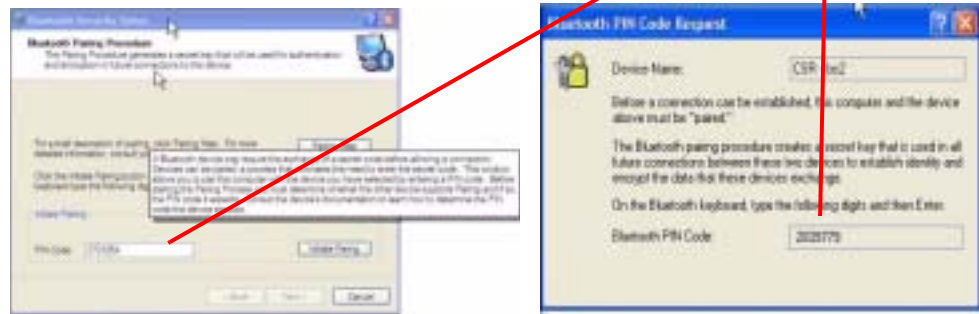
10. Check to see if the device (Microsoft Mouse) has green arrows beside it, which indicates it is working.

Pairing a Device (Bluetooth Keyboard)

In addition to discovery, the installation of many Bluetooth devices requires the pairing of the external device (such as a keyboard) with the Tablet PC. Pairing lets you avoid entering access information each time you connect to the device. Paired devices share a unique “link key,” which they exchange each time they connect. Once paired, devices stay paired, even if they are out of range or not working, until you unpair them (see “Unpairing Devices”).

The following steps describe how to pair a Bluetooth keyboard, but are similar for other Bluetooth devices.

1. Repeat Steps 1-10 in the Set Up a Device section for this device (Bluetooth keyboard).
2. Highlight the device in the Entire Bluetooth Neighborhood window. (In this example, a BT keyboard.)
3. Right click on the device and tap Pair Device from the pop-up menu or tap Establish Pairing in the Bluetooth Tasks window.
4. One of two “Pin Code” windows may appear: Bluetooth Security Set Up and Bluetooth PIN Code Request windows. Both prompt you to enter a Pin Code for pairing the device. After you successfully enter the pin code, tap Finish. The Entire Bluetooth Neighborhood window appears.



This completes the Bluetooth setup procedure. You can begin using your Bluetooth device.

MICROPHONE DESIGN AND FUNCTIONS

The Tablet PC contains two microphones with features that help optimize the sound capturing capabilities of your Tablet PC for voice recognition and Voice over IP (VoIP):

- Array Processing or “beam forming” software—Removes all sound outside the angle of acceptance
- Noise Supression—Removes background and ambient noise
- Acoustic Echo Cancellation (AEC)—Removes echo caused by microphone pick up of the system’s speaker output and prevents feedback.

Focusing and Training the Microphones

The microphones can be focused to several angles—narrow, wide, full-room—and can be trained to detect sound from in front of or to the side of the Tablet PC, or in the entire room.

Narrow Focus

You may want to focus the microphones to a narrow angle in a “voice-noisy” environment (such as in a meeting) or for dictation or Internet phone use (for Voice over IP—VoIP).

1. Open the Motion Dashboard.
2. Under Microphone, tap Narrow Focus. The microphone now has a narrow “angle of acceptance” that focuses on a spot near the center of the display when the Tablet PC is in an upright viewing position.



To change the microphone focus for dictation or VoIP:

NOTE: Set the Microphone slider to between 50% and 75% and NOT as shown in this illustration.

1. Open the Motion Dashboard.
2. Under Microphone, tap Narrow Focus.
3. Position yourself at the new location where you want the microphone to detect the sound.
4. Tap Train. A block of text appears.



5. Speaking normally towards the Tablet PC microphones, read the text aloud. This takes 20-40 seconds. When the microphones are focused, the text disappears.

IMPORTANT: The microphones keep the new setting until you retrain them or until you change the microphone to a different focus. When you change to another setting (such as “Wide” to “Meeting”), the microphones return to the default focus.

Wide Focus

To configure the microphones for a single “voice-quiet” environment or one with two or more people, such as at a conference table or around a desk:

1. Open the Motion Dashboard.
2. Under Audio, tap Wide Focus. The microphones now focus on a wider “angle of acceptance” than the Narrow Focus.

To train the microphones for dictation from a different “Wide Focus” angle, see “Focusing and Training the Microphones,” above.

Meeting/Conference

To configure the microphones for a meeting or conference room:

NOTE: This setting turns off the microphones’ “array processing/beam forming” software and disables the Training function.

1. Open the Motion Dashboard.
2. Under Audio, tap Meeting/Conference. The microphones now accept sound from all angles equally.

SETTING UP THE UNIVERSAL JACKS

The Universal Jacks can be used interchangeably by microphones or headsets. To configure the jacks:

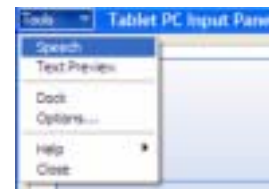
1. Tap the Universal Jacks icon in the System Tray on the Tablet PC display. The Sigmatel Controls menu appears.
2. Set the desired options.



SETTING UP SPEECH RECOGNITION FOR DICTATION

To set up speech recognition for dictation:

1. Tap the Tablet PC Input Panel icon on the menu bar at the bottom of the Tablet PC display. The Tablet PC Input Panel appears.
2. Tap the down-arrow beside Tools to open the selection box.
3. Tap Speech. The first time you access this function, a Speech Recognition Enrollment message appears suggesting that you take 10 minutes to adjust the microphone and train speech recognition before continuing. Until you complete speech training, the speech buttons are inactive.
4. Tap Next and follow the Microphone Wizard.



NOTE: Initially, speech recognition will correctly recognize approximately 85%-90% of the words you dictate. To further improve performance, run speech training sessions. Open the Windows Control Panel and select Speech to perform additional speech training. As you use this feature, accuracy gradually improves.

**USING SPEECH
RECOGNITION
FOR COMMANDS**

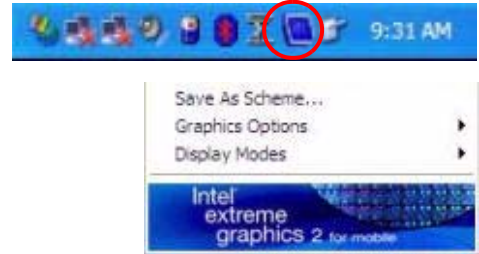
After you complete Speech Recognition training, when you select Speech, the Tablet PC Input Panel displays options for Dictation or Commands. The display also indicates if it is Not Listening or Listening.

NOTE: For more information about using this feature, see the Windows Help and Support Center where you can search for topics about speech recognition and training. Also available are the speech tutorials. To find the speech tutorial, select Start>Help and Support>Welcome to Tablet PC>Tablet PC Tutorials.

**CREATING A
SCREEN-
RESOLUTION
SCHEME FOR AN
EXTERNAL
MONITOR OR
SIMILAR DEVICE**

To create a special screen resolution scheme:

1. Tap the Properties button under External Display on the Motion Dashboard. Or, the Intel(R) Extreme Graphics icon in the System Tray, located at the bottom-right corner of the display. Then select Graphics Options>Graphics Properties....
2. From the Intel(R) 82852/82855 GM/GME Graphics Controller Properties window, select the Schemes tab. The current Video Mode is displayed.
3. Tap the New button on this window.
4. Type in a name for the new scheme.
5. Highlight this new scheme in the Schemes window.
6. Add or change the parameters for this scheme.
7. Tap Save.
8. To test or launch a scheme, select it from the list and tap the Invoke button.
9. Tap OK.

**MULTIMEDIA
APPLICATIONS**

Your M1400 Tablet PC supports most multimedia applications.

**ABOUT THE
OMNIPASS
PASSWORD
MANAGEMENT
SYSTEM**

The fingerprint reader built into your Motion Tablet PC lets you scan your fingerprint to log onto your Tablet PC and perform other functions such as accessing email, e-banking, paying bills online, or accessing network resources. The OmniPass software offers a secure and convenient system for managing your passwords.

When implemented within the security policies of your work environment, the OmniPass authentication tools add another layer of security for your passwords, files, and other logons.

The following section provides basic information about setting up and using the management system. For more advanced features, see the OmniPass Help files or go to the manufacturer's website for additional information.

(Optional) If you need to set up a windows user account and password...

NOTE: You may want to contact your System Administrator to see if you already have a Windows user account and password set up on your system.

When your Tablet PC starts the first time, you will see an OmniPass logon window next to the Windows logon. If you want to start using the fingerprint reader immediately and do not already have a Windows account, you need to set one up:

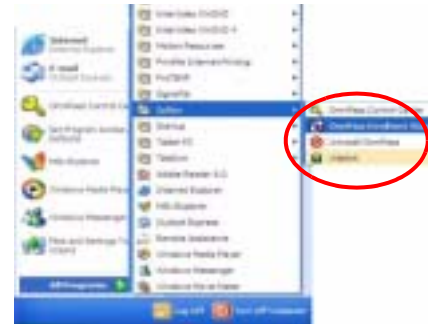
1. (Optional) Tap Cancel to close the OmniPass logon dialog.
2. Tap start>Control Panel>User Accounts>Add.
3. Type in a user name and domain in the space provided (check with your System Administrator to see if a domain is needed).
4. Tap Next.
5. Select the appropriate access level (check with your System Administrator for this information).
6. Tap Next. Windows creates a new user account.
7. (Optional, but recommended) Tap Add Password and assign a user password to this account.

BASIC FINGERPRINT READER SET UP

These basic configuration steps will enroll you in OmniPass and let you log onto your Tablet PC with your fingerprint. We recommend that you start here to gain experience with the scanning techniques before moving on to more advanced features. For a list of OmniPass advanced features, see the section “Advanced Fingerprint Reader Set Up” in this chapter.

Enrolling with OmniPass

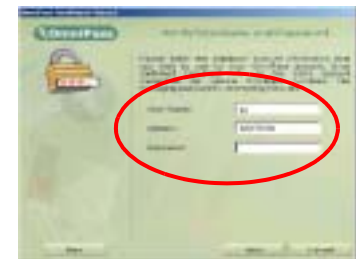
1. Tap start>All Programs>Softex>OmniPass Enrollment Wizard.



2. From the enrollment window, tap Enroll.



3. Type in the user name, domain, and the password (if you have one set up) you want to use for this OmniPass account.
4. Tap Next.



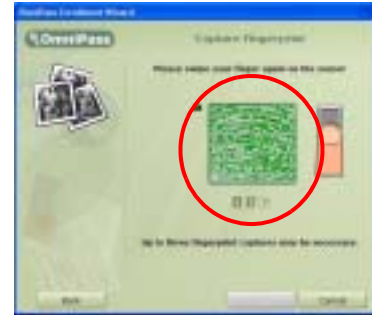
Enrolling a Fingerprint with OmniPass

5. When the Choose Finger window appears, tap the dotted area above the finger you want to enroll. A red arrow appears above the selected finger.
6. Tap Next.



Capturing Your Fingerprint

- When the Capture Fingerprint window appears, press your finger against the swipe sensor. Start the scan with the finger's knuckle over the top of the gold-colored finger-drive ring (1). Slowly swipe the finger down over the sensor (2). Be sure your finger touches both the gold finger-drive ring and the sensor surface during the scan. If the capture is successful, you will see a green fingerprint in the capture area.



If the capture is *unsuccessful*, a green fingerprint will not appear in the scan area. Swipe your finger across the sensor again.



- After the first scan is successful, OmniPass prompts you to scan your fingerprint two more times. Wait until the green fingerprint disappears from the display and the fingerprint area is empty before swiping our finger again.



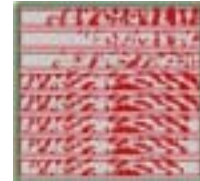
HINTS FOR SUCCESSFUL FINGERPRINT CAPTURES

- When scanning, press hard enough to fully contact both the drive ring and the sensor.
- Rub your fingers together to stimulate the natural skin oils so your fingerprint is easier for the sensor to detect.
- Clean the sensor. First, power down the Tablet PC and remove the battery. Then, clean the sensor using a cotton swab sprayed with a window-type cleaner (no bleach, solvents, or abrasives); then dry the sensor. Do not spray, pour, or otherwise dispense any liquid directly on the sensor.

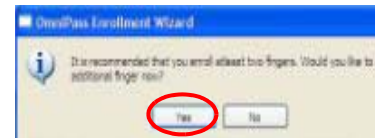
NOTE: If the fingerprint capture times out, tap Back. This restarts the enrollment process.



9. After OmniPass successfully captures three fingerprints, the Verify Fingerprint window appears. Swipe your finger one more time to complete the enrollment. When the messages “The selected finger has been enrolled in OmniPass” and “Successful Verification” and a green fingerprint appear, enrollment is complete.
10. Tap Next.



11. When you are prompted to enroll a second fingerprint, tap Yes.
12. Repeat Steps 7-9 to enroll a second fingerprint.



IMPORTANT: We recommend that you enroll a second fingerprint. A finger injury could prevent an authorization and block access to your accounts.

13. (Advanced options) When you finish fingerprint enrollment, the Set Authentication Rules window appears. Leave these unchecked (the default). For more information, see the OmniPass Help.
14. Tap Next.



15. When the Audio and Taskbar Settings window appears, leave the default notification options.
16. Tap Next. The Congratulations window appears.
17. Tap Done.
18. Tap Yes to log yourself on as a new user.



This completes the OmniPass enrollment.

ADVANCED FINGERPRINT READER FEATURES

OmniPass offers a number of advance features that provide additional password management for your Tablet PC beyond the basic convenience of logging on.

CAUTION: Before configuring advanced features, please read the OmniPass information provided with the feature or in the OmniPass Help, including any cautions or warnings about the feature. Activating some features (specifically Strong Logon Security) may, as a normal part of the OmniPass operation, change the way your Tablet PC starts up and/or the start-up options that are available.

To access these advance features, tap the OmniPass icon to open the OmniPass Control Center. Here is an overview of these features:

- User Management — Adding and removing users)
- User Settings — Audio, Taskbar Tips, and Enrollment (which includes setting up authentication rules for Windows and OmniPass logons, password replacement in applications and websites, user management, encryption/decryption of files and folders)
- System Settings — Setting startup options; Enabling Strong Logon Security
- Vault Management — Managing identities and passwords at remembered websites, application logons, or for any password-protected resource
- Encrypt/Decrypt — Requiring authentication (fingerprint scan/password) for encrypting/decrypting files



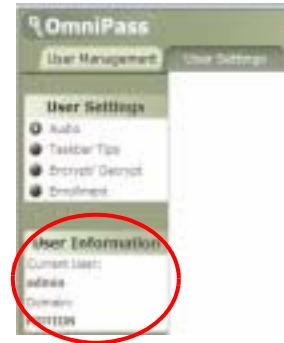
For further information about these options, open the OmniPass Control Center and tap Help.

Checking Logon Status

During some OmniPass operations, you may need to know if a user is logged on. You can quickly see logon status by moving the cursor over the OmniPass key icon in the system tray.



Or, tap the OmniPass key icon to open the OmniPass Control Center and then look in the User Accounts to see who is logged on.



SETTING UP TABLET PC SECURITY


Passwords protect your Tablet PC from unauthorized access. Passwords can create different levels of protection for your Tablet PC and its data:

- **Operating system password** — Secures the files on your Tablet PC from other users
- **BIOS passwords** — Secures the software routines that test hardware at startup, start the operating system, and support the transfer of data among hardware devices; BIOS is the Basic Input/Output System
 - **System password** — Locks access to the BIOS setup
 - **Boot password** — Locks access to the system
 - **HDD (Hard Disk Drive) password** — Secures your data so the Hard Disk Drive cannot be accessed by removing it and connecting it to another Tablet PC

Setting the Windows Operating System Password

You can set up a Windows operating system password through the Windows Control Panel, User Accounts.

Setting the BIOS Passwords


 **CAUTION:** We strongly recommend that you write down your password(s) and keep it in a location that is appropriate to your work environment. If you enter a wrong BIOS System password several times, you will be locked out of the system. If you become locked out, you can restart the Tablet PC and retry the password again. You can repeat restarting and retrying the password as many times as you want. However, if you are unable to remember your password, you will not be able to access your Tablet PC. If this happens, you call Motion Computing Technical Support or your Motion reseller for assistance. Have your Tablet PC Serial number available (located on the label on the back of the unit) for them to assist you.

The level of security you want on your Tablet PC helps determine what BIOS password(s) you set. These are described in the following sections.

BIOS System Passwords

To set up a password to access the PhoenixBIOS™ Setup Utility on the Tablet PC:

NOTE: These procedures describe using the pen to enter information; you can also attach an external keyboard if you prefer.


1. Start the Tablet PC.
2. When the Motion Computing Splash Screen appears, quickly press Hot Key #2 (icon shown here). If you miss the Splash screen, turn the Tablet PC off then back on and try this step again. 
3. From the PhoenixBIOS Setup Utility, tap Security on the menu bar.
4. **To set up a System password**, double-tap Enter next to Set System Password.
5. Type in a System Password using the onscreen keyboard.
6. Tap Enter.
7. Type in the password again to confirm it.
8. Tap Enter. The system returns to the Security screen and the System Password reads Set. A password is now required to enter the PhoenixBIOS Setup Utility.
9. **To set up a Password on boot**, tap Disabled next to Password on boot until Enabled is highlighted. You will not be prompted to type in another password because Password on boot uses the System password.

NOTE: You cannot set up Password on boot until you set up a System password.

10. If you have finished setting up a password, tap Exit or press the Esc key on the Tablet PC to exit the PhoenixBIOS Setup Utility.
11. When you exit, you are prompted to select from the following options:
 - Exit Saving Changes
 - Exit Discarding Changes
 - Load Setup Defaults
 - Discard Changes
 - Save Changes
12. Select the desired action.
13. Confirm the selection by tapping Yes.

Hard Disk Drive (HDD) Password

To set up a password to start the Tablet PC (so no one can access the information on the Hard Disk Drive of your Tablet PC even if it is removed and installed in another Tablet PC without the proxy password):

1. Start the Tablet PC.
2. When the Motion Computing Splash Screen appears, quickly press Hot Key #2. If you miss the Splash screen, turn the Tablet PC off then back on and try this step again. 
3. From the PhoenixBIOS Setup Utility, tap Security on the menu bar.

4. **To set the hard disk password**, double-tap Enter next to Set Hard Disk Password.
5. Type in a New Password.
6. Tap Enter.
7. Type in the password to confirm it.
8. Tap Enter. The system returns to the Security screen and the HDD Password is Set. (When you exit then re-enter the PhoenixBIOS setup, the HDD Password is Locked.)
9. Repeat Steps 10-13 in the section “Bios System Passwords.”

CLEARING TABLET PC SECURITY

To clear the Tablet PC PhoenixBIOS security:

1. Start the Tablet PC.
2. When the Motion Computing Splash Screen appears, quickly press Hot Key #2. If you miss the Splash screen, turn the Tablet PC off then back on and try this step again.
3. From the PhoenixBIOS Setup Utility, tap Security on the menu bar. If you have rebooted, you will be prompted to enter the password(s) you have set up.
4. To clear the System and Password on boot passwords, double-tap Enter next to Set System Password.
5. Type in the Current Password.
6. Leave the space blank next to Enter New Password.
7. Tap Enter.
8. Leave the space blank to Confirm New Password.
9. Tap Enter.
10. When the Security screen appears, the System Password should be Clear and the Password on boot Disabled.
11. To clear the Hard Disk Drive password, double-tap Enter next to Set Hard Disk Password.
12. Type in the Current Password.
13. Leave the space blank next to Enter New Password.
14. Tap Enter.
15. Leave the space blank to Confirm New Password.
16. Tap Enter.
17. When the Security screen appears, the HDD Password should be Clear.



CARING FOR YOUR TABLET PC AND ITS ACCESSORIES

The Tablet PC display and chassis are designed to be very durable. This section describes the proper care and maintenance that will keep them working and in good condition for a long time. For general information about care of the Tablet PC and its components and accessories, see the *Regulatory and Safety Guide* packaged with your Tablet PC.



CAUTION: Be sure to follow the guidelines listed below when caring for your Tablet PC and its components. Improper use may damage the Tablet PC and/or its components and void the warranty.

General Care

- Protect the Tablet PC from exposure to extreme temperatures, shock, liquids, strong magnetic fields, and turbulent conditions.
- Do not open or disassemble the Tablet PC other than to replace memory modules or to replace the battery. Always follow the instructions included with these accessories when performing these procedures.



WARNING: To avoid the risk of personal injury or damage to the Tablet PC, when replacing memory modules, turn off your Tablet PC, unplug the AC power connection, and remove the battery. Ground yourself by touching a grounded conductive surface, such as a device or appliance with a grounded, three-pronged plug. Avoid touching the pins and leads on the memory and the internal circuitry of the Tablet PC. See the section "Adding Memory" in this chapter for more information about replacing or adding memory modules.

- When storing the Tablet PC for an extended period of time, unplug AC power and remove the battery after discharging it part way.
- Do not place heavy objects on top of the Tablet PC.

Caring for the Display Screen

- You can clean fingerprints and most marks from the display surface by wiping it with the soft cloth (provided). If needed, you can spray this cloth with a window-type cleaner. Never spray or pour liquids directly onto the display surface itself. Never use an abrasive cleaner on the display. If liquid is spilled on the display, wipe it up immediately.
- Avoid using tissues or paper towels to clean the display surface. These contain wood fibers that can scratch the display.
- Use only the Motion digitizer pen on the display. Do not write on the surface with an ink pen or pencil, any pointed or other object that could damage the display surface.
- Do not place heavy objects on the display surface.
- Protect the display surface from unnecessary contact by using the Hardtop Cover or a portfolio when transporting the Tablet PC.
- Avoid exposing the display to direct sunlight for long periods of time.

Caring for the Motion Digitizer Pen

- Always store the Motion digitizer pen in the Tablet PC pen bay or in the portfolio when not in use.
- Store extra pens in your portfolio. Do not store the pen vertically on the tip. Constant tip pressure can affect the pen-to-digitizer interaction.
- The pen contains sensitive electronics. Do not immerse it in liquids.

Replacing the Pen Tips

Normal use eventually wears down the pen tip, so the pen ships with extra tips and a small “tip tool” for replacing them.

1. Grasp the old tip with the silver ring of the tip replacement tool (1).
2. Pull the old tip out of the pen.
3. Insert a new tip (2).
4. Apply slight pressure to push it into place.



CAUTION: Certain environments may contain particles or debris that can adhere to the Tablet PC display or to the pen tip. To avoid damaging the display, clean it frequently with the cleaning cloth, provided with your unit. Also, change pen tips regularly, especially if you drop the pen onto a rough surface that could damage the tip or embed debris in it. Damaged pen tips can scratch the display.

Ordering New Pens

To order additional pens, visit the Motion Computing website at www.motioncomputing.com/accessories.

TRAVELING WITH YOUR TABLET PC

Here are some tips for traveling with your Tablet PC:

- Remove all accessories and cables. Remember to pack those you will need while traveling and do not forget to pack at least one Motion digitizer pen.
- Attach the Hardtop Cover or slip the Tablet PC into a portfolio to protect the display.
- Protect the pen by keeping it in the Tablet PC pen bay or portfolio case during travel.
- Pack the Tablet PC securely in a briefcase or hand-carried luggage, and keep it separate from toiletries, liquids, and food. Do not pack it in checked luggage when you travel.
- Keep the Tablet PC stable during travel; secure it to prevent it from sliding around in overhead bins and car trunks.

NOTE: For travel warnings, see the section “FAA Wireless Air Travel Requirements” in this chapter.

Traveling by Air

- Prepare for airport security by charging the battery in the event Security asks you to start the Tablet PC.
- Have it hand-inspected or sent through the X-ray scanner, but never carry it through the metal detector.
- Either turn off or place the Tablet PC in hibernation for takeoff and landing.

FAA Wireless Air Travel Requirement



WARNING: The FAA requires that wireless operations be suspended before boarding the plane. The easiest way to disable *internal*/wireless operations is by unchecking (disabling) all wireless devices in the Motion Dashboard. The wireless LED on the Tablet PC front panel, shown here, is off when wireless communications are disabled. To disable *external*/wireless operations, remove any installed wireless PC Cards.



WARNING: Do not transport the lithium ion batteries used in your Tablet PC in checked baggage. You may take up to two spare batteries in carry-on luggage in addition to the one in your Tablet PC. Transporting batteries in checked baggage or transporting more than two spare batteries is a violation of transportation regulations.

Other Travel Hints

- Before extended use in the field or long trips away from AC power, adjust the Power properties to maximize battery conservation. Right-click the Power/Battery icon in the System Tray, located in the lower right-hand corner of the display window, to open the Power Options Properties dialog box. Then adjust the options. For more information, see the section “Changing the Default Power Scheme” in this chapter. Or see the Performance and Maintenance section of the Help and Support Center for details about power settings.
- For international travel, obtain and use the appropriate adapters for your destination’s electrical outlets. A current converter is not necessary.
- You may want to carry proof of ownership or a merchandise passport when traveling internationally.
- Consult your insurance company and credit card company to learn about emergency travel assistance in the event your Tablet PC becomes lost or disabled.

Appendix A

Troubleshooting and Support

All Motion Computing Tablet PCs have passed a rigorous series of performance and quality-control tests, but now and then a problem may occur. If you do not see a solution among the following system and software issues, check the Support Options listed at the end of this chapter or go to our website at www.motioncomputing.com/support.

SOLUTIONS

PROBLEM	CAUSE	SOLUTION
POWER		
The Tablet PC won't start when I slide the Power switch.	The Power switch hasn't been fully engaged.	Slide and hold the Power switch for at least a half-second, but no more than three seconds.
	Fully discharged battery or no battery and no AC power.	Connect the AC adapter to operate the Tablet PC and charge the battery.
The Tablet PC won't shut down.	An application has locked up the Tablet PC.	Press the Security button to start Windows Task Manager and close the application.
		Slide and hold the Power switch for at least 5 seconds to force a shutdown of the Tablet PC.
The Tablet PC won't enter Hibernation mode.	Hibernation isn't enabled.	Enable Hibernation through Power Option Properties.
The Tablet PC won't come out of Hibernation mode when running on battery power.	Fully discharged battery and no AC power.	Connect the AC adapter to provide power to the Tablet PC and charge the battery.

PROBLEM	CAUSE	SOLUTION
POWER (CONTINUED)		
The display goes black while the Tablet PC is still turned on.	The Tablet PC system has gone into Stand By after sitting idle for a period of time. (In this state, the power LED flashes green.)	Slide the Power switch for about a second to resume operations.
	System has gone into low-battery Hibernation. (In this state, the power LED is off.)	1, Slide the Power switch for about a second to resume operations. 2. Connect the AC adapter to the Tablet PC to charge the battery.
BATTERY		
Data loss during battery swap.	The unit is designed to maintain the data and settings for up to 30 seconds in Stand By while you swap the battery. This time may vary due to your system and the programs you're running.	When you swap the battery with the unit in Stand By, be sure to save your data before removing the battery to avoid data loss.
The battery seems to run down very quickly (lasting less than three hours after a full charge).	Accessory devices such as a DVD player and applications that make heavy use of the hard drive drain the battery more quickly.	Use AC power when possible and/or turn off the accessory devices.
	The battery is weakening or defective.	All batteries weaken in time, but if a new battery is needed, contact your reseller or Motion Computing about replacing it.
DISPLAY		
The desktop is too big for the display – I can't see all of the desktop icons.	Screen resolution is set higher than the default 1024 x 768 with 32-bit resolution.	Decrease the screen resolution by opening the Motion Dashboard, selecting Graphics Properties, then the Schemes tab.
When I disconnected a second monitor from the Tablet PC, the image became too big for the Tablet PC display.	The Tablet PC has attempted to spread the image of a window or desktop beyond the screen area of the active monitor.	1. Tap the Properties button on the Motion Dashboard. 2. Tap Graphics Options, then Graphics Properties... to open the Properties screen. 3. Select Notebook to make the Tablet PC the primary display.
The display looks dim.	Brightness is set too low.	Adjust brightness from the Motion Dashboard.

The screen is unreadable or distorted.	Screen resolution and/or color quality are set incorrectly.	Reset resolution to 1024 x 768 and color quality to 32-bit by opening the Motion Dashboard, Graphics Properties, then the Schemes tab.
	Display driver has become corrupted or uninstalled.	<ol style="list-style-type: none"> 1. Open the Windows Control Panel, select Performance and Maintenance (Category View) or System (Classic View). 2. Select the Hardware tab. 3. Select Device Manager. 4. Open Display adapters. 5. Double-tap on an adapter. 6. Select the Driver tab. 7. Choose Update Driver... and follow the Installation Wizard.
PEN		
The Tablet PC digitizer screen doesn't respond to the plastic stylus I use on my PDA.	You're using the wrong input device.	Only the Motion Digitizer Pen lets you write on the Tablet PC display. The Tablet PC doesn't respond to other tablet pens or to a plastic stylus.
I have the Tablet PC Input Panel open, but a few seconds after I write, my writing disappears.	You don't have an application or word processing program open to which the Input Panel can send the ink message.	Either open the Text Preview window from the Tools menu on the Input Panel or open a word processing program, such as Microsoft Word, Notepad, or Wordpad.
The Motion Digitizer Pen tip doesn't line up with the arrow-cursor when I tap on the screen.	The pen and display need recalibrating.	Double-tap the Tablet and Pen Settings icon and select the Pen Settings tab. Or select Calibrate on the Motion Dashboard.
I sometimes unintentionally click the Pen function button while I'm writing with the Pen.	You're pressing the Pen button with your thumb or finger when you write or gripping the Pen too tightly and accidentally pressing the Pen button. This enables the right-click function of the Pen.	<p>Try these hints:</p> <ul style="list-style-type: none"> • Readjust how you hold the Pen. Place your fingers on either side of the Pen function button when you write. • Practice using the Pen function button with both your index finger and thumb to see which you prefer. • Relax your grip. Only a light touch is needed to write with the Pen. • Deactivate the Pen right-click function through Tablet and Pen Settings. Instead, press and hold the Pen to the display surface to right-click.

PROBLEM	CAUSE	SOLUTION
PEN (CONTINUED)		
The Pen button doesn't work. I can't get it to right-click.	The right-click option for the Pen button may be deactivated.	Re-activate the right-click option: Double-click the Tablet and Pen Settings icon, select Pen Options, and reselect Use pen button to right-click. Select Apply>OK.
	You may not be correctly timing clicking the Pen button and tapping the Pen on the display.	To right-click, hold the Pen button down and then firmly tap on the display.
The buttons on the Tablet PC don't do what I expect them to do.	Button functions have been changed.	Double-tap the Tablet and Pen Settings icon, then Tablet Buttons. You can reset the buttons to the defaults. NOTE: Button functions are associated with the orientation in which they're programmed.
INTERFACE/PORTS		
The system doesn't recognize the PC card I've inserted.	The card is incorrectly inserted.	Eject the card and re-insert it with the label side up.
	The device is not supported.	Check Windows XP compatibility.
The system doesn't recognize a USB or IEEE 1394 device.	Windows XP may take a short time to recognize the device.	Wait until Windows XP recognizes the device.
	The accessory isn't connected to the Tablet PC correctly.	Check the connection cable and be sure it is inserted into the correct port on the Tablet PC and the accessory device.
	The correct driver isn't built into Windows XP.	Use the device's installation CD or check the manufacturer's website for the correct driver.
The Tablet PC is sitting in the Motion FlexDock, but the system doesn't recognize any accessory devices, such as the external monitor or CDROM.	The Tablet PC isn't fully seated in the Motion FlexDock.	Reseat the Tablet PC in the Motion FlexDock.
AUDIO		
No sound is coming from the built-in speakers.	Connecting a headset or external speakers mutes the built-in speakers.	Disconnect the headset or external speakers if not in use.
No sound is coming from any speakers.	Audio volume is too low or has been muted.	Open the Motion Dashboard and adjust the speaker volume by sliding the volume slider or uncheck the Mute button.

PROBLEM	CAUSE	SOLUTION
OPERATING SYSTEM		
I've forgotten my BIOS password and can't access my system.	The Tablet PC will let you enter a several passwords incorrectly before it locks the system.	Turn the Tablet PC off and back on and try re-entering your password (you can do this as many times as needed). If you have forgotten your password, contact your Motion Computing reseller or Motion Computing Technical Support for information about unlocking your system.
The program I'm working in has stopped responding, but the cursor moves and other programs work.	The program has crashed.	Press the Security button (small button with a key icon) on the Tablet PC front panel to open the Task Manager and end the non-responsive program.
The system keeps showing the wrong date and time even after I reset it.	Wrong time zone is selected.	Check that the time zone is correct and reset it as needed.
	The system memory battery on the mainboard may need to be replaced.	Contact your Motion Computing Reseller or Motion Computing Support at www.motioncomputing.com/support
The system seems to be operating more slowly than usual.	The hard disk drive is full or nearly full.	Run the Disk Cleanup utility to clear out unnecessary and temporary files. Remove unneeded programs and files.
	The disk needs defragmenting.	Run Disk Defragmenter to consolidate files and folders on the hard drive. Consult the "Performance and Maintenance" section of the Help and Support Center.
COMMUNICATIONS		
The wireless communication keeps connecting even when I don't want it to.	The default setting is On.	Uncheck the wireless checkboxes in the Motion Dashboard.
Data doesn't transfer through the wired Ethernet cable.	The Ethernet cable is not connected correctly.	Reconnect and check the activity LEDs next to the LAN (RJ-45) port. They should flash green and amber.

FAQs**How long will the battery stay charged?**

This can vary according how you're using the Tablet PC, but a new, fully charged standard Motion 6-cell battery can last 3-4 hours.

Can I make the battery charge last longer?

- Change to the Max Battery power scheme (right-click on the Power/Battery icon in the System Tray—located in the lower-right corner of the display window—and tap Adjust Power Properties; under Power schemes, tap Max Battery). The Tablet PC comes with Motion Computing Optimized as the default power scheme.
- Dim the display brightness by opening the Motion Dashboard and moving the Display Brightness slider. (You can also double-tap on the Tablet and Pen Settings icon in the System Tray and choose the Display tab to get this brightness slider.)
- Disconnect LAN/modem connections and disable wireless communications when not in use (uncheck the Wireless checkboxes in the Motion Dashboard).
- Turn off optional and unnecessary background programs and turn off or unplug accessory equipment from the USB and IEEE 1394 ports.

What does the Tablet PC need for use in another country?

Just an outlet adapter, which you can find in airports and travel stores. The AC adapter will adjust automatically to different voltages when plugged into the correct location-appropriate power adapter.

What's the best way to clean the display screen?

To clean the display screen, wipe it with a soft cloth (like the one supplied) onto which you have sprayed a window-type cleaner. Do not spray cleaners, spray/pour any liquid, nor wipe any abrasive cleaner on the screen nor any surface of the Tablet PC. Do not use tissues or paper towels to clean the screen. They contain wood fibers and may scratch the surface.

Will scratches affect the display/digitizer's performance?

Testing has not found appreciable loss of performance on a scratched display.

How sensitive is the screen to sunlight and the elements?

As with any computer or electronic device, the Tablet PC should be protected from liquids, dirt and sand, other contaminants, sunlight, and extreme heat.

Will the Tablet PC work with any monitor or USB accessory keyboard, mouse, disk drive, etc?

As long as the device's driver is available either in the Windows XP operating system or from the manufacturer and it carries the Windows XP logo or certification, it should work with your Tablet PC. For more information, see www.microsoft.com/help.

Why doesn't the Tablet PC or FlexDock have parallel, serial, or PS2 (mouse) ports?

Microsoft Tablet PC certification requires the system to be completely Grab-and-Go—that is, to be able to dock with and undock from all accessories without putting the system into suspend or shutting it down. Connection through legacy ports (serial, parallel, PS2) often requires suspending or restarting the system, which prevents you from moving between desktop mode and mobile mode seamlessly in one docking/undocking step. You can purchase a USB-to-serial or USB-to-parallel adapter from Motion Computing or a Motion Computing reseller.

How do I adjust the Tablet for left-handed use?

Double-tap on the Tablet and Pen Settings icon in the System Tray, located in the lower-right corner of the display window, which opens the Settings window. You can change handedness as well as the location of the menus. Then, recalibrate the Pen.

**MOTION
WARRANTIES****Standard, and Extended Warranty and Insurance Programs**

Motion Computing currently provides limited warranties on Motion products and accessories. See the Warranty packaged with your Motion product or accessory or visit our website at www.motioncomputing.com.

In addition, Motion Computing offers extended warranties along with various screen and configuration insurance programs. Visit our website at www.motioncomputing.com/support.

**MOTION
COMPUTING
SUPPORT
OPTIONS****Motion Computing Support**

If you need assistance or answers to frequently asked questions about your Motion Tablet PC, visit www.motioncomputing.com/support. We also offer a Knowledge Base of additional information that may help with your problem.

Returning the Motion Tablet PC for Repairs

To request service for your Motion Computing Tablet PC, contact Motion Computing Technical Support at www.motioncomputing.com/support.

RMA Process (Warranty Service)

To request warranty service, contact Motion Technical Support at www.motioncomputing.com. Under Support you will find instructions for warranty service.

Appendix **B**

Motion Tablet PC Specifications

Motion M1400 Tablet PC	
CPU	Intel® Pentium® Processor, Ultra Low Voltage (ULV)
Chipset	Intel 855GME with up to 64MB allocated to video RAM
System Memory	256MB base RAM (maximum 2GB); two PC2100 DDR SODIMM slots
System Storage (Hard Disk Drive)	20GB (standard), upgradeable
I/O	Audio: two universal jacks Ports: two USB 2.0 ports; one IEEE 1394; one RJ-11; one RJ-45; one VGA monitor; one docking connector
Front Panel Buttons	Button 1: Primary function=Esc; secondary function=Alt+Tab (programmable) Button 2: Function (non-programmable) Button 3: Five-way directional control (programmable) Button 4: Primary function=Dashboard (programmable); secondary function=Journal (programmable) Button 5: Primary function=Rotate display; secondary function=Input Panel (programmable) Button 6: Security (Ctrl+Alt+Del) (non-programmable)
PC Card Controller	Texas Instruments ® PCI 1410 cardbus
PCMCIA card slot	Single Type-II PCMCIA cardbus slot
PC Audio	Two built-in speakers and two built-in microphones; SigmaTel® 9758 audio codec
Displays	12.1" XGA TFT LCD (1024 x 768); (Optional) View Anywhere Display featuring reduced reflection and glare and a better viewing angle.
Ambient Light Sensor	Measures environmental light for automatic backlight adjustment
Graphics	Intel 855GME integrated graphics with UMA rotational support. Rotation: 0°, 90°, 180°, 270° External Monitor Resolution Support: 1800 x 1440 (maximum)
Communications	
Ethernet LAN	10/100: Realtek™ RTL8100BL LAN on daughterboard
Modem	PCTEL® MDC V.92 56.6Kbps/14.4Kbps transceiver fax
Wireless	802.11b/g (WiFi®); Bluetooth® wireless radio
Input Device	Active digitizer pen (no battery required) with function button
Security	AuthenTec® fingerprint sensor; built in

Docking	Motion FlexDock docking station. Features include: microphone-in; headphone-out; DC power in; three 2.0 USB ports; IEEE1394 connector; RJ-45 connector; VGA connector (for external monitor); docking connector to the Tablet PC; cut-out that allows access to the RJ-11 (modem) connector on the Tablet PC
Battery/Power Management	
Battery Type	Three or six prismatic lithium ion (Li-ion) cells; Smbus control; 40Whr capacity (optional lightweight 3-cell lithium ion battery, purchased separately)
Battery Life	Six-cell battery: Maximum 3-4 hours
Battery Charging Time	Approximate charging time of 2 hours (Tablet PC on); 1.2 hours (Tablet PC off)
Battery Charger (optional accessory)	Motion Multi-Unit Battery Charger: Nominal Input Voltage=19VDC; nominal output voltage=12.5V; operating ambient temperature: 0°C to + 40°C (+32 F to +104°F); storage temperature: -2°C to +70° C (+28°F to +158°F)
AC Power Adapter	50W universal, 2-pin jack, 90~264V AC, 47-63Hz
LED System Status Indicators	Power/Stand By; Battery Status; Hard Drive Access; Wireless Activity
Software (standard)	Microsoft Windows XP Tablet PC Edition; Adobe Acrobat; Motion Computing Dashboard; Bluetooth application software; OmniPass Fingerprint sensor software; customer support tools; online documentation; drivers
BIOS	Flash BIOS ROM; password protection for the system and Hard Disk Drive; ACPI 1.1 compliant; Pen/Button based setup utility
Environment	Operating Temperature: +5°C to +35°C (+41F to +95°F) Storage Temperature: -20°C to +60°C (-4F to +140°F) Humidity: 10% to 90% without condensation Operating Altitude: 0 to 10,000 feet Storage Altitude: 0 to 40,000 feet
Physical Characteristics	
Size	296.0mm x 240.0mm x 22.0mm (11.7" x 9.4" x 0.90")
Carrying Weight	<3.0 lb (1.36KG) (in selected configurations)
Optional Accessories*	Motion FlexDock; Motion Desktop Stand; Motion Slip Case; Motion Hardtop Cover; Motion Portfolio; Motion Executive Portfolio; Clamshell Portfolio; Motion Mobile Keyboard with Touch Pad; Motion Hardtop Keyboard; Motion Rubber Edge Protector; Motion Optical Disk Drives; Motion 3-cell Battery; Motion 6-cell Battery; 256MB, 512MB, and 1GB memory upgrades; Bluetooth PC card. *New accessories may be added from time to time. For a list of the currently available accessories, see the Motion website at www.motioncomputing.com/accessories .
Service/Support	
Motion Computing Support	Contact your Motion Computing reseller or go to the Motion Computing support website at www.motioncomputing.com/support .
Agency Certifications	
Emissions	FCC 15, Class B EN55022 (CISPR22) Class B ICES-003 Class B ETS 300 328 ETS 300 826 IC RSS 210
Immunity	EN55024
Safety	UL and CUL, UL1950 CSA C22.2 EN60950
Telecom	FCC Part 68 IC CS03

Appendix C

Wireless Mini-PCI Installation

WIRELESS MINI-PCI INSTALLATION

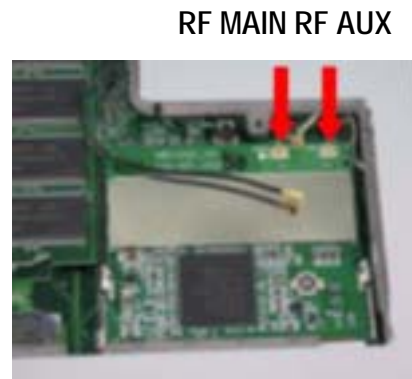
To install the wireless mini-PCI card (WMIB 100GS) in your Tablet PC, follow these steps:

WARNING: To avoid the risk of personal injury or damage to the Tablet PC, when performing the following tasks, turn off your Tablet PC, unplug the AC power connection, and remove the battery. Ground yourself by touching a grounded conductive surface, such as a device or appliance with a grounded, three-pronged plug. Avoid touching the pins and leads on the memory module and the internal circuitry of the Tablet PC.

1. Disconnect the Tablet PC from AC power and remove the battery.
2. Remove the two small Phillips head screws securing the L-shaped cover from the bottom of the Tablet PC.
3. (If you are replacing an existing wireless card and not just installing a card in an empty slot) Release the two clips on each side of the card. When the card pops up, gently pull it from the mini-PCI slot.
4. Align the edge connectors on the mini-PCI card with the mini-PCI socket on the Tablet PC.
5. Holding the wireless mini-PCI card at a 25-degree angle, gently push it into the mini-PCI socket of the Tablet PC motherboard until it is firmly seated.
6. Snap the card into place.



7. Connect the gray antenna from the Tablet PC to the RF MAIN terminal of the mini-PCI card.
8. Connect the black antenna on the Tablet PC to the RF AUX auxiliary terminal of the mini-PCI card.
9. Replace the cover on the bottom of the Tablet PC, reinsert the screws, and tighten them.
10. Reinsert the battery and connect to AC power; then power up the Tablet PC.



A

- AC mini-plug 12
- AC power adapter 12
- accessories 18
 - flexdock 18
 - Hardtop Cover 20
 - Keyboard 19
 - Memory Upgrade Modules 20
 - portfolio 20
- Acoustic Echo Cancellation (AEC) 16, 24
- adding memory 44
- ALS
 - See Ambient Light Sensor.
- Ambient Light Sensor 1, 16, 25
 - description of features 40
 - Dynamic 25
- ambient noise filters 1, 16
- analog telephone jack 13
- Array Processing software 16, 24
- arrow keys 13

B

- battery 11
 - and ALS 25, 40, 44
 - and storing the Tablet PC 65
 - Battery Status Gauge 15
 - Battery Status LED 42
 - charging 42
 - disposing of 43
 - functions 12
 - gauge 42
 - hints 43, 44
 - overheated 42
 - recharging 42
 - recharging time 42
 - status 14
 - temperature 12
 - testing the charge 42
 - transporting 67
- battery status 14
- battery status gauge 11, 15
- beam forming software 16, 24
- BIOS
 - accessing 63, 64
 - exiting 63
- Bluetooth

- connection tips 53
- discovery 51
- distance 49
- FAA regulations 48
- HID 50
 - pairing 51
 - pin code 52
 - setup wizard 50
 - troubleshooting 51
 - unpairing 53

- button functions
 - Alt + Tab 13
 - Tablet PC Input Panel 13

Buttons

- changing defaults 39
- Escape button 13
- Function button 13
- Hot Key #1 (Dashboard) 13
- primary functions 13
- resetting button functions 39
- secondary functions 13

C

- capture 59
- cleaning recommendations 65
- commands
 - voice 56

D

- Dashboard
 - calibrate pen button 32
 - description of features 24
 - opening 30
- default power scheme 41
- desktop stand 18
- dictation 56
- Did You Know updates 6
- discoverable mode 51
- discovery. See discoverable mode.
- display
 - brightness and ALS 25, 40
 - cleaning 65
 - orientation 38
 - ALS settings 40
- display screen 65
- domain name 28

drawings 35

Dynamic setting, ALS 25

E

Enable 802.11 Wireless Radio 48

End User License Agreement 28

enrollment, fingerprint 58

Establish Pairing 52

F

faxing 13

features 1

finger drive ring 59

fingerprint

capture 59

scanning hints 59

Fingerprint reader

advanced features 61

basic set up 57

enrollment 29, 58

OmniPass software 57

Strong Logon Security 61

Fixed ALS setting 40

FlexDock 18, 46

focus

See microphones.

Function button. See pen function button 32

G

gauge 15

gestures, pen 34

graphics 46

grounding 44

H

hard drive 11

Hard Drive LED 14

Hardtop Cover 20, 65

Hardtop keyboard 19

HDD password 62

headphone 11

hibernate

power management 43

hibernation

definition of 30

exiting 31

when to use 30

hints

battery 43, 44

power management 43, 44

wireless 20

Hot Key #2 (Orientation) 13, 38

Hot Keys 39

Human Interface Device - HID 50

I

I/O 2

Inkball 5

Intel Extreme Graphics 46

Internet, initializing in Windows XP 27

K

keyboard 19

L

LEDs

battery status 14

Hard Drive 14

Power/Standby 14

status 14

Wireless 14

Lithium ion battery 2

lock slot 11

locked, HDD Password 64

logon 57

M

Max Battery power setting

memory 11, 44

memory configurations 44

memory upgrade modules 20

Meeting/Conference microphone setting 24, 55

microphones

built-in 11

Meeting/Conference 24, 55

Narrow Focus 24, 54

jacks 11

Wide Focus 24, 55

- Microphone Wizard 55
- Microsoft Office Product Key 27
- Mini-PCI Card 11, 16
- modem 13
- Motion Tablet PC
 - care 65
 - chassis 12
 - features 1
 - starting and stopping 30
 - storing 65
- Motion digitizer pen 12
- multimedia 56

- N**
- noise suppression 16, 24

- O**
- OmniPass
 - checking logon status 61
 - Encrypt/decrypt 61
 - Enrollment Wizard 28, 57
 - set authentication rules 60
 - System Settings 61
 - User Management 61
 - User Settings 61
 - Vault Management 61
 - Windows user account 57
- OmniPass Control Center 61
- orientation
 - changing 38

- P**
- pairing
 - Bluetooth 51
- Password
 - BIOS 62
 - forgotten 62
 - HDD 62
 - operating system 62, 64
 - Password on boot 63
 - password management system 57
 - removing 64
- PBX 13
- PC card
 - PC card slot 11, 15, 16

- pen
 - and mouse 33
 - backspace gesture 34
 - button 31
 - calibrating 12, 32
 - care 33, 66
 - description 8
 - double-tap 31
 - electronics 66
 - function button 32
 - gestures 34
 - ordering 66
 - overview 31
 - pen tether anchor 11
 - pointer 33
 - press and hold 32
 - replacing pin tips 66
 - right-click 31
 - select/highlight 32
 - tap and drag 32
 - using on the display 65
 - writing with 32
- peripheral devices 18
- PhoenixBIOS Setup Utility 62
- Pin Code 52
- portfolio 20, 65
- ports
 - IEEE 1394 11
 - LAN (RJ-45) 13
 - modem (RJ-11) 11, 13
 - USB 11
 - VGA monitor 11, 46
- power management 25
 - hints 43, 44
- power meter 41
- power switch 11, 29
- Power/Standby LED 14
- preview window 35
- product key 27

- R**
- RJ-11 13

- S**
- screen resolution setting up a new scheme 56
- SDRAM 1, 44

- security 62
 - disabling passwords 64
 - See also Fingerprint reader 57
- security button 13
- sensor
 - See fingerprint reader 59
- set system password 63
- smart battery 14
- software 21
 - dashboard 24
 - microsoft activation 27
- speakers 11
- speech
 - listening... 56
 - not listening 56
- speech recognition 26
 - setting up 55
- standby 25
 - definition of 30
 - exiting 31
 - Power Management 43
 - when to use 30
- Standby mode 18
- Starting and stopping 29
- Sticky Notes 37, 38

T

- Tablet PC Input Panel
 - icon 34
 - ink 35
 - Send as Ink 34
 - writing 25
- Tablet PC Tutorials 5
- Take a Tour of Windows XP 6
- Task Manager 13
- temperature 65
- throughput 13
- touchpad 19
 - scroll zone 19
- train 24, 54
- travel
 - adjusting power settings 67
 - international 67
 - wireless on airplanes 67
- tutorials, Tablet PC 5

U

- Ultra Low Voltage (ULV) 1
- user account, Windows 28
- Universal Audio Jacks 50

V

- VGA 46
- video mode 56
- View Anywhere display 1, 9
- voice commands 26
- voice notes 38
- Voice over IP (VoIP) 1

W

- Wide focus 224, 55
- Windows Journal 11
- Windows user account 28
- Windows XP Tablet PC Edition
 - initializing 27
- wireless 1, 16
 - Control Panel 48
 - Dashboard 25, 48
 - disabling external 67
 - disabling for air travel 48
 - enable 802.11 Wireless Radio 48
 - FAA regulations 48, 66
- wireless access point
 - connecting to 48
- writing with the pen 32

X

- xDSL 13

Free Manuals Download Website

<http://myh66.com>

<http://usermanuals.us>

<http://www.somanuals.com>

<http://www.4manuals.cc>

<http://www.manual-lib.com>

<http://www.404manual.com>

<http://www.luxmanual.com>

<http://aubethermostatmanual.com>

Golf course search by state

<http://golfingnear.com>

Email search by domain

<http://emailbydomain.com>

Auto manuals search

<http://auto.somanuals.com>

TV manuals search

<http://tv.somanuals.com>