

P526

Service Manual



1 · Equipments required

NO#	Equipment Description	ASUS Part#	Supplier	Quantity	Remarks
1	Computer	None	None	1	
2	SIM Card	None	None	1	
3	P526	80A-S5C1004	ASUS	1	
4	Battery	07G016043459	ASUS	1	
5	Mini USB cable	14G000506200	ASUS	1	
6	Screwdriver (T5)	16-T00362002	ASUS	1	
7	Tweezers	16-000600014	ASUS	1	
8	Plastic Wrench	13GV0400PZZZ	ASUS	1	
9	Micro SD Card	04G352700210	ASUS	1	
10	ADAPTER	04G267013820	ASUS	1	

2. Disassembly / Assembly Procedure

2.1 Introduction

This section describes how to disassemble P526 telephone.

Many of the integrated devices used in this phone are vulnerable to damage.

Ensure adequate static protection is in place when handling, shipping, and servicing any internal components.

2.2 Recommended Tools

Anti-Static Mat (Ground Cord included)

Anti-Static Wrist Strap

Torque Screw Driver (T5 type, torque is set to 1.2kg-cm)

Tweezers

Plastic blade



2.3 Disassembly Procedure

The following set of diagrams will demonstrate the correct sequence and action to disassemble P526.

1. Remove the Stylus



2. Remove Battery cover



3. Remove Battery



4. Remove the ANTENNA Cover



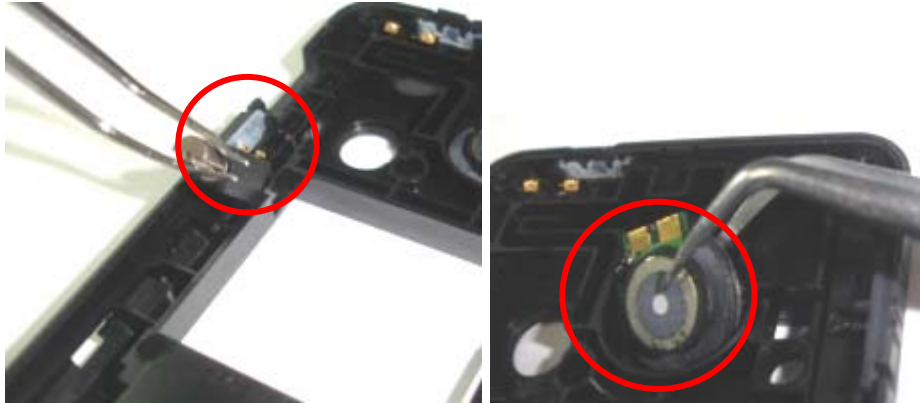
5. Remove 4 SCREWS M1.6*4L T5



6. Disassemble FRONT COVER ASS'Y and MIDDLE COVER ASS'Y by Plastic Wrench



7. Remove VIBRATOR and SPEAKER from MIDDLE COVER ASS'Y



8. Remove Main Board from FRONT COVER ASS'Y



9. Remove LCD TFT, KEYPAD and 4 GASKETS from FRONT COVER ASS'Y



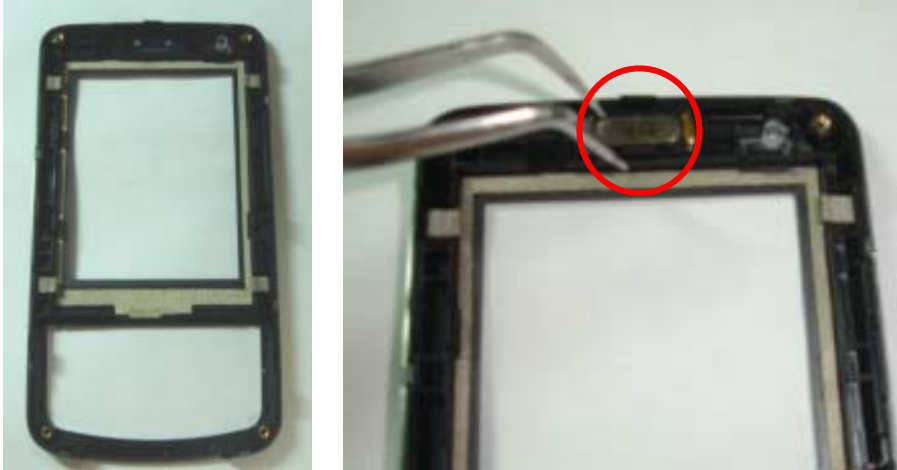
10. Remove RECEIVER from FRONT COVER ASS'Y



2.4 Assembly Procedure

It is carried out in the exact reverse sequence as the disassembly.

1. Assemble FRONT COVER ASS'Y: Put RECEIVER in FRONT COVER ASS'Y



2. Assemble LCD module



3 · Put Keypad in FRONT COVER ASS'Y



4. Assemble FRONT COVER ASS'Y and Main Board



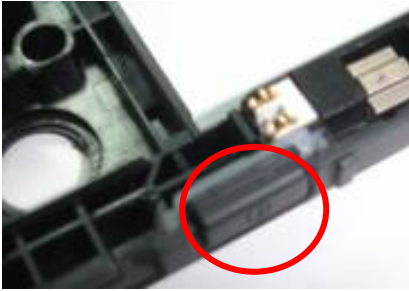
5 · Connect the LCM Module



6. Assemble MIDDLE COVER ASS'Y : Put VARISTOR in MIDDLE COVER ASS'Y



7 · Put OK KEY MIDDLE COVER ASS'Y



8 · Put CAMERA KEY in MIDDLE COVER ASS'Y



9 · Put POWER KEY in MIDDLE COVER ASS'Y



10 · Assemble MIDDLE COVER ASS'Y and MIDDLE COVER ASS'Y



11 · Put on 4 SCREWS M1.6*4L T5



12 · Put on Battery



13 · Put on Battery Cover



14. Assemble Styluses : Put in Stylus



Free Manuals Download Website

<http://myh66.com>

<http://usermanuals.us>

<http://www.somanuals.com>

<http://www.4manuals.cc>

<http://www.manual-lib.com>

<http://www.404manual.com>

<http://www.luxmanual.com>

<http://aubethermostatmanual.com>

Golf course search by state

<http://golfingnear.com>

Email search by domain

<http://emailbydomain.com>

Auto manuals search

<http://auto.somanuals.com>

TV manuals search

<http://tv.somanuals.com>