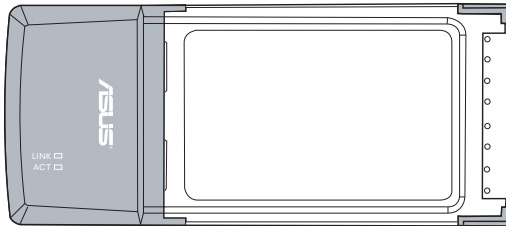




Wireless Local Area Network Card

WL-106gM

(For 240 MIMO Wireless Network)



User Manual

Copyright Information

No part of this manual, including the products and software described in it, may be reproduced, transmitted, transcribed, stored in a retrieval system, or translated into any language in any form or by any means, except documentation kept by the purchaser for backup purposes, without the express written permission of ASUSTeK COMPUTER INC. ("ASUS").

ASUS PROVIDES THIS MANUAL "AS IS" WITHOUT WARRANTY OF ANY KIND, EITHER EXPRESS OR IMPLIED, INCLUDING BUT NOT LIMITED TO THE IMPLIED WARRANTIES OR CONDITIONS OF MERCHANTABILITY OR FITNESS FOR A PARTICULAR PURPOSE. IN NO EVENT SHALL ASUS, ITS DIRECTORS, OFFICERS, EMPLOYEES OR AGENTS BE LIABLE FOR ANY INDIRECT, SPECIAL, INCIDENTAL, OR CONSEQUENTIAL DAMAGES (INCLUDING DAMAGES FOR LOSS OF PROFITS, LOSS OF BUSINESS, LOSS OF USE OR DATA, INTERRUPTION OF BUSINESS AND THE LIKE), EVEN IF ASUS HAS BEEN ADVISED OF THE POSSIBILITY OF SUCH DAMAGES ARISING FROM ANY DEFECT OR ERROR IN THIS MANUAL OR PRODUCT.

Product warranty or service will not be extended if: (1) the product is repaired, modified or altered, unless such repair, modification or alteration is authorized in writing by ASUS; or (2) the serial number of the product is defaced or missing.

Products and corporate names appearing in this manual may or may not be registered trademarks or copyrights of their respective companies, and are used only for identification or explanation and to the owners' benefit, without intent to infringe.

SPECIFICATIONS AND INFORMATION CONTAINED IN THIS MANUAL ARE FURNISHED FOR INFORMATIONAL USE ONLY, AND ARE SUBJECT TO CHANGE AT ANY TIME WITHOUT NOTICE, AND SHOULD NOT BE CONSTRUED AS A COMMITMENT BY ASUS. ASUS ASSUMES NO RESPONSIBILITY OR LIABILITY FOR ANY ERRORS OR INACCURACIES THAT MAY APPEAR IN THIS MANUAL, INCLUDING THE PRODUCTS AND SOFTWARE DESCRIBED IN IT.

Copyright © 2005 ASUSTeK COMPUTER INC. All Rights Reserved.

ASUSTeK COMPUTER INC.

Company address: 15 Li-Te Road, Beitou, Taipei 11259
General (tel): +886-2-2894-3447
Web site address: www.asus.com.tw
General (fax): +886-2-2894-7798
General email: info@asus.com.tw

Technical support

General support (tel): +886-2-2894-3447
Online support: <http://support.asus.com>

ASUS COMPUTER INTERNATIONAL (America)

Company address: 44370 Nobel Drive, Fremont, CA 94538, USA
General (fax): +1-510-608-4555
Web site address: usa.asus.com

Technical support

General support (tel): +1-502-995-0883
Online support: <http://support.asus.com>
Notebook (tel): +1-510-739-3777 x5110
Support (fax): +1-502-933-8713

ASUS COMPUTER GmbH (Germany & Austria)

Company address: Harkort Str. 25, D-40880 Ratingen, Germany
General (tel): +49-2102-95990
Web site address: www.asuscom.de
General (fax): +49-2102-959911
Online contact: www.asuscom.de/sales

Technical support

Component support: +49-2102-95990
Online support: <http://support.asus.com>
Notebook support: +49-2102-959910
Support (fax): +49-2102-959911

Table of Contents

1. Introduction	5
Overview	5
Package contents	6
Features.....	6
2. Installation	7
System Requirements	7
Installation Procedures	7
Installing the WLAN utilities and driver.....	7
Reading the WLAN Status Indicators.....	8
One Touch Wizard.....	9
Configuring with the WLAN utility (Infrastructure)	10
Configuring with the WLAN utility (Ad Hoc).....	11
3. Software Reference.....	12
ASUS WLAN Control Center	12
Wireless Settings Utility	14
Status - Status.....	14
Status - Connection.....	16
Status - IP Config	17
Status - Ping.....	17
Config - Basic.....	18
Config - Advanced	19
Config - Encryption.....	20
Config - Authentication	23
Survey - Site Survey.....	23
About - Version Info.....	24
Link State	25
Exit Wireless Settings.....	25
Windows® XP Wireless Options.....	26
4. Troubleshooting	28
5. Glossary	30
6. Appendix	38

1. Introduction

Overview

What is MIMO?

MIMO, which stands for Multiple Input Multiple Output, is a technology that uses multiple transmitters and receivers simultaneously to expand the signal range. Taking advantage of multipath propagation, MIMO enabled wireless devices can efficiently increase network throughput, range/coverage, and reliability.

Instead of combating multipath signals which is conducted by IEEE802.11b/g standards, MIMO puts multipath signals to work carrying more information. This is accomplished by sending and receiving more than one data signal in a radio channel at the same time. By transmitting multiple signals containing different information streams over the same frequency channel, MIMO provides a means of doubling or tripling spectral efficiency.

240 MIMO Technology

The 240 MIMO technology offers data rate as fast as 240Mbps, and enables data transfer at more than 100Mbps in real life. With a set of 240 MIMO wireless router and adapter, a 100MB video clip can be transmitted in less than 10 seconds. Thanks to the upcoming wireless technology, we are going to experience data throughput even faster than wired Ethernet.

ASUS 240 MIMO wireless family supports faster-than-wired transmitting speed over a wireless network while at the same time provides full compatibility to the backward IEEE802.11b and IEEE802.11g standard. Therefore, the interoperability of wireless LAN products of different standards by various manufacturers is guaranteed.

Chapter 1 - Introduction

Package contents

Check the following items in your ASUS Cardbus Wireless LAN Adapter package. Contact your retailer if any item is damaged or missing.

- 1 x ASUS Wireless LAN Adapter (WL-106gM)
- 1 x Support CD
- 1 x Quick Start Guide

Features

Standard PCMCIA slot Type II, MIMO Gen3, OFDM, DSSS,
Supports Infrastructure and Ad-hoc networks;
Compatible with IEEE 802.11b and 802.11g devices.

2. Installation

System Requirements

To begin using the WLAN Card, you must meet the following minimum requirements:

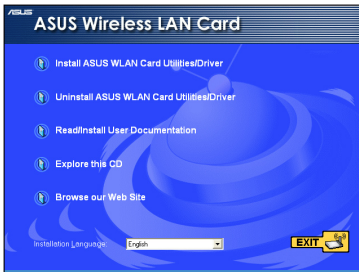
- Windows XP/2000
- Standard PCMCIA slot Type II or Type III for notebook computer
- 128MB system memory or larger
- 750MHz processor or higher



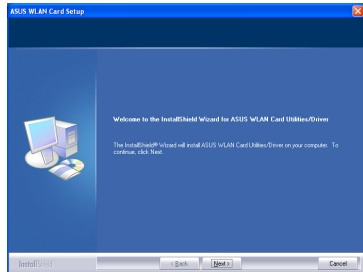
Important: Install the WLAN card utilities before inserting the WLAN Card into your computer.

Installing the WLAN utilities and driver

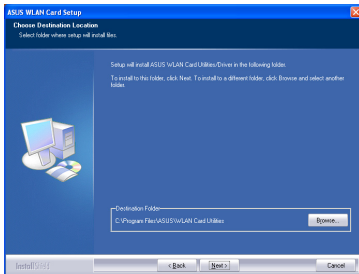
Follow these instructions to install the WLAN card utilities and driver. Insert the support CD into your optical drive. If autorun is enabled in your computer, the CD automatically displays the utility menu. Click **Install ASUS WLAN Card Utilities/Driver**. If autorun is disabled, double-click SETUP.EXE in the root directory of the CD.



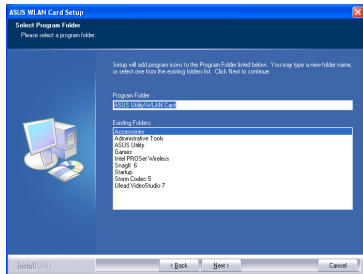
1. Select your language and click **Install WLAN Card Utilities/Driver**.



2. Click **Next** on the Welcome screen.

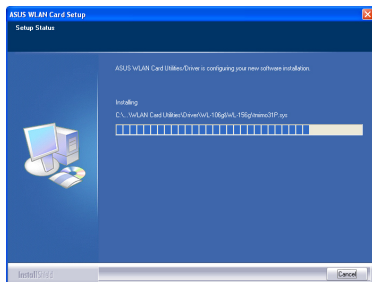


3. Click **Next** to use the default Destination Folder or click **Browse** to select another folder.

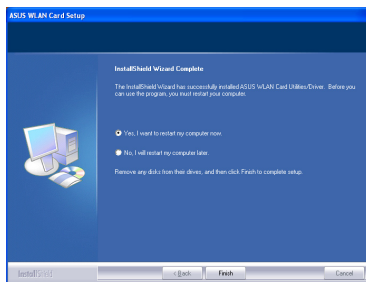


4. Click **Next** to create short cut.

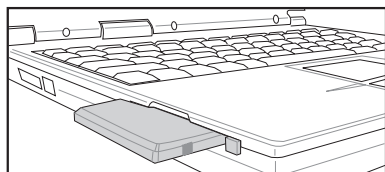
Chapter 2 - Installation



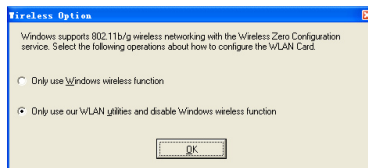
5. The installation process takes several seconds.



6. When Setup is complete, click **Finish** to exit the installation wizard and restart the computer.



7. Carefully insert the WLAN card into your computer's PCMCIA slot. Windows will automatically detect and configure the WLAN Card using the utilities and drivers installed in the previous steps.



8. Windows XP users: When the program is launched for the first time (during Windows restart), you are asked to choose one utility to configure the WLAN Card. Select "Only use our WLAN utilities and disable Windows wireless function".

Reading the WLAN status indicators

The device comes with two LEDs that indicate the status of the WLAN Card.

ACT LED

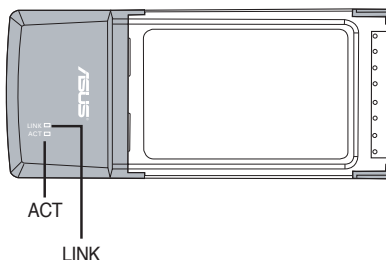
Blinking: Transmitting data; the blinking speed indicates the link speed.

OFF: Radio off or Card is disabled.

LINK LED

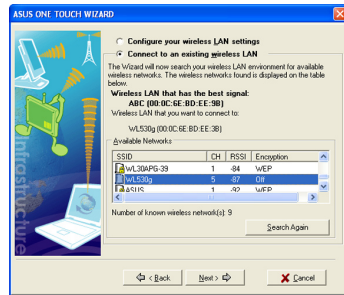
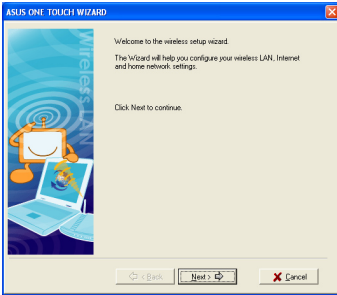
ON: Connected to wireless device.

OFF: No wireless connection.

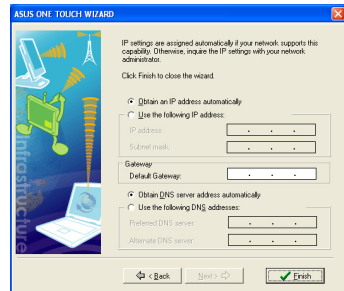
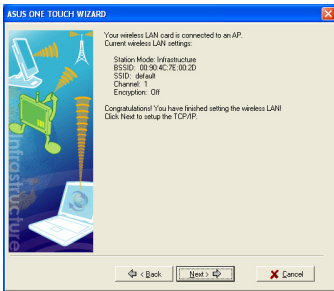


One Touch Wizard

Use One Touch Wizard to setup your wireless connection with an existing wireless LAN.



1. Launch One Touch Wizard from Start menu and click **Next** to set up your wireless network.
2. Select an AP from the **Available Networks** field, then click **Next**.



3. Connection is complete. Click **Next** to setup the IP address for the WLAN card.
4. Choose to obtain an IP address or to assign static address manually for your WLAN card. When IP setting is complete, click **Finish** to exit the One Touch Wizard.

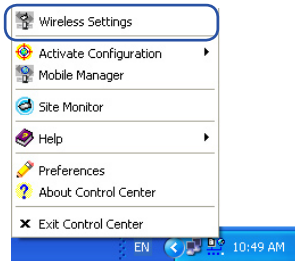


Note: If the access point you want to connect has set up encryption policies, you must configure the same encryption on your WLAN Card. Select "Configure your wireless LAN settings" radio button in step 2 and make the settings accordingly. When the encryption settings are complete, you can launch the One Touch Wizard once again from the Start menu to set up the connection with your AP.

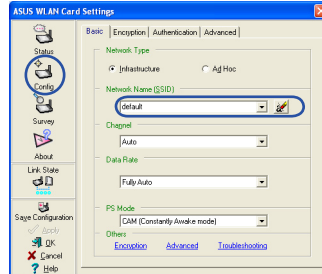
Chapter 2 - Installation

Configuring with the WLAN utility (Infrastructure)

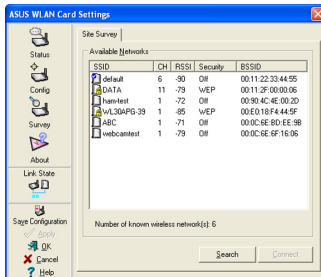
Use ASUS WLAN utility to get connected with an existing wireless network.



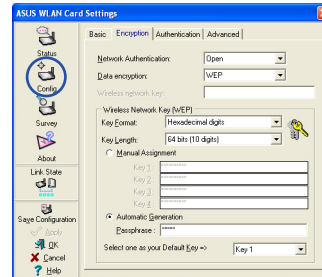
1. Right-click the wireless connection icon and select **Wireless Settings**.



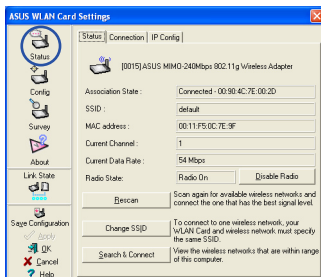
2. Check the **Config** page to set the **SSID** (network name) to that of your wireless AP.



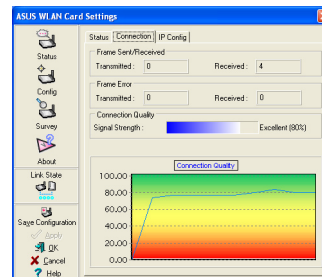
3. Use **Site Survey** if you don't know the SSID of your access point(s).



4. Encryption settings must match those at the access point. Ask your network administrator about settings if necessary. Click **Apply** to activate the settings.



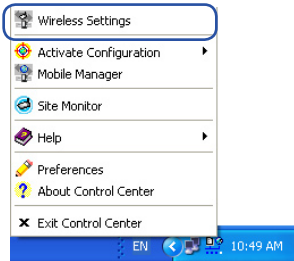
5. Check the **Status** page to see the association state. If connection is established, the box shows "Connected - xx:xx:xx:xx:xx:xx".



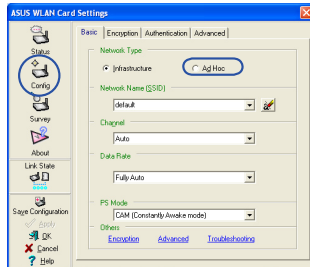
6. Check the **Connection** tab to see the signal strength. Click **OK** to exit the utility.

Configuring with the WLAN utility (Ad Hoc)

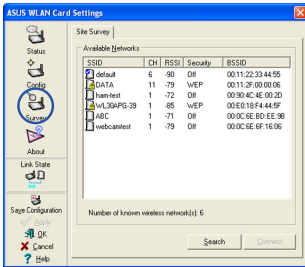
The WLAN card supports Ad Hoc mode which allows communication between wireless stations without an AP.



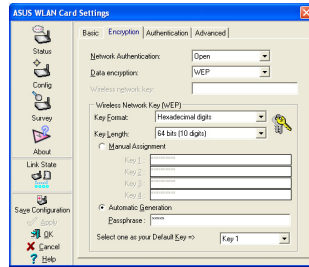
1. Right-click the wireless connection icon and select **Wireless Settings**.



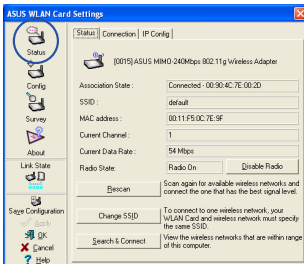
2. Click the **Config** button and set the WLAN Card to **Ad Hoc** connection mode.



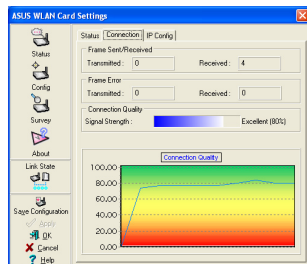
3. Click the **Survey** button to scan for Ad Hoc nodes. Select the node you want to communicate with and press **Connect**.



4. If the encryption settings of your WLAN Card are different from those of the other Ad Hoc nodes, you are prompted to make the encryption of the two nodes identical. Click **Apply** to activate the settings.



5. Check the **Status** page to see the association state. If connection is established, the box shows "Connected - xx:xx:xx:xx:xx:xx".



6. Check the **Connection** tab to see the signal strength. Click **OK** to exit the utility.

3. Software Reference

ASUS WLAN Control Center

ASUS WLAN Control Center is an application which makes it easier to launch WLAN applications and activate network location settings. The WLAN Control Center starts automatically when system boots. When WLAN Control Center is running, you can see a Control Center icon on the Windows taskbar.

Starting the Control Center

- Select **ASUS WLAN Control Center** in Windows Start menu, or
- Double-click the **ASUS WLAN Control Center** icon on the desktop.



Using the Control Center

The Control Center taskbar icon displays the following information:

- Link quality of the WLAN Card (Excellent, Good, Fair, Poor, Not Linked)
- Whether the WLAN Card is connected to a network (Blue: Connected, Gray: Not Connected)



Taskbar Icon and Status

Wireless Status Icons (on the taskbar)

- Excellent** link quality and **connected to Internet** (Infrastructure)
- Good** link quality and **connected to Internet** (Infrastructure)
- Fair** link quality and **connected to Internet** (Infrastructure)
- Poor** link quality and **connected to Internet** (Infrastructure)
- Not linked** but **connected to Internet** (Infrastructure)
- Excellent** link quality but **not connected to Internet** (Infrastructure)
- Good** link quality but **not connected to Internet** (Infrastructure)
- Fair** link quality but **not connected to Internet** (Infrastructure)
- Poor** link quality but **not connected to Internet** (Infrastructure)
- Not linked** and **not connected to Internet** (Infrastructure)

Taskbar icon - Right-click menu

Right-click the taskbar icon to show the following menu items:

- **Wireless Settings** – Launches Wireless Settings application.
- **Activate Configuration** – Allows you to choose a preset profile.
- **Mobile Manager** – Launches Mobile Manager application.
- **Site Monitor** – Launches the Site Monitor application.
- **Preferences** – Customizes the Control Center program. You can create a Control Center shortcut on the desktop and decide whether to start Control Center when system boots.
- **About Control Center**-Shows the version of Control Center.
- **Exit** – Closes the Control Center program.

Taskbar icon - Left-click menu

Left-click the taskbar icon to show the following menu items:

- **Wireless Radio On** – Turns the wireless radio ON.
- **Wireless Radio Off** – Turns the wireless radio OFF.
- **Search & Connect** – View the properties of available access points.
- **Wireless Option** (Windows® XP only) – Choose Windows® Wireless Zero Configuration (WZC) service or ASUS utilities to configure your WLAN card.



Taskbar Left-Click Menu

Taskbar Icon - Launch Wireless Settings

Double-click the taskbar icon to launch the Wireless Settings utility.



ASUS Wireless Settings Utility

Wireless Settings is an application for managing the WLAN Card. Use Wireless Settings to view or modify the configuration settings, or to monitor the operational status of your WLAN Card. When Wireless Settings is launched, you can see the tabbed property sheets which categorize the configuration options into groups.

Starting Wireless Settings

- Open the Windows **Control Panel**, then double-click the **ASUS WLAN Card Settings** icon.
- or
- Click the Windows **Start** button, select **Programs | ASUS Utility | WLAN Card | Wireless Settings**.
- or
- Right-click the **Control Center** icon on the Windows taskbar and select **Wireless Settings**.

NOTE: If you have more than one ASUS WLAN device installed on your computer, you may see a device selection window when you launch the “Wireless Settings” utility. Select the device you want when such situation occurs.

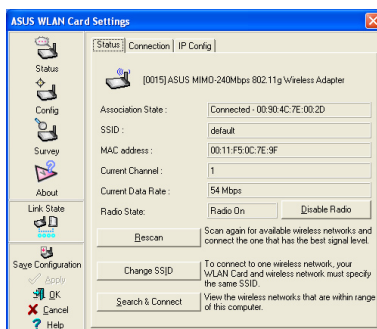
Status - Status

You can view the information about the WLAN Card from the Status menu. The status fields are blank if the WLAN Card is not installed. You can turn off the WLAN Card by clicking the “Disable Radio” button.

Association State

Displays the connection status as follows:

Connected - The card is now associated with one wireless LAN device. When operating in Infrastructure mode, this field shows the MAC address of the access point with which the WLAN Card is communicating. When operating in Ad Hoc mode, this field shows the virtual MAC address used by computers participating in the Ad Hoc network.



Scanning... - The station is trying to authenticate and associate with an access point or Ad Hoc node.

Disconnected - The WLAN Card is installed to the system, but not yet connected to a wireless device.

SSID

Displays the Service Set Identifier (SSID) of the device that the card is either associated or intending to join.

MAC address

Shows the hardware address of the WLAN Card. MAC address is a unique identifier for networking devices (typically written as twelve hexadecimal digits from 0 through 9 and A through F separated by colons, i.e. 00:E0:18:F0:05:C0).

Current Channel

Displays the radio channel to which the card is currently tuned. This number changes as the radio scans the available channels.

Current Data Rate

Displays the current data rate in megabits per second (Mbps).

Radio State

Shows the wireless radio status: ON or OFF.

Radio On - When the wireless radio is turned ON, the icon on the right appears in the upper left of the Status page.



Radio Off - When the wireless radio is turned OFF, the icon on the right appears in the upper left of the Status page.



Buttons

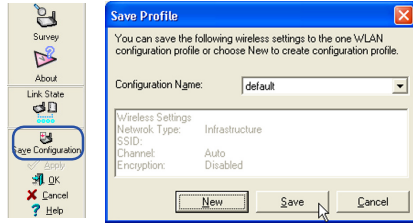
Rescan – Make the WLAN Card rescan all available devices. If the current link quality or signal strength is poor, rescanning can be used to push the radio off a weak access point and search for a better link with another access point. This function usually takes several seconds.

Change SSID – Click this button to set the SSID to that of the AP you want to connect.

Search & Connect – Click this button to connect to an available wireless AP.

Save Configuration

When you make settings for a certain working environment, you may need to save your settings to a profile so that you can easily switch to the settings without repeating the configurations. For example, you can set profiles for work, home and other situations. When you travel from home to work, choose the "office" profile that contains all your settings for office use. When you travel back home, choose the "home" profile.



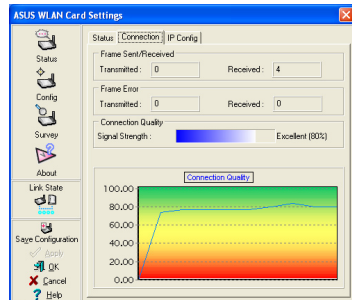
Activate Configuration

Auto roaming is enabled by default and makes the Card automatically switch to APs of better signal. You can uncheck it if you want to connect to a specified AP using a particular profile.



Status - Connection

You can view the current link statistics about the WLAN Card. These statistics are updated once per second and are valid if the WLAN Card is correctly installed.



Frame Sent/Received

Transmitted - The number of frames that were transmitted.

Received - The number of frames that were received.

Frame Error

Transmitted - The number of frames that were not successfully transmitted.

Received - The number of frames that were not successfully received.

Connection Quality

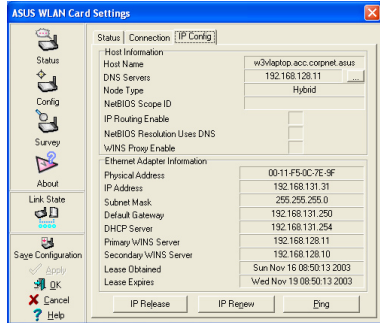
Signal Strength - Shows the link quality of the access point or Ad Hoc node the WLAN Card is currently connected to. Ratings are: Excellent, Good, Fair, and Poor.

Overall Connection Quality

The overall connection quality is derived from the current signal strength. A graphic chart uses percentage to show signal quality.

Status - IP Config

IP Config tab shows all the current host and WLAN Card information including host name, DNS servers, IP address, subnet mask and default gateway.



Button

IP Release - If you want to remove the current IP address, click this button to release the IP address from DHCP server.

IP Renew - If you want to obtain a new IP address from DHCP server, click this button to renew the IP address.

Ping - Click this button to open "Ping" tab which is used to ping the devices in your network.

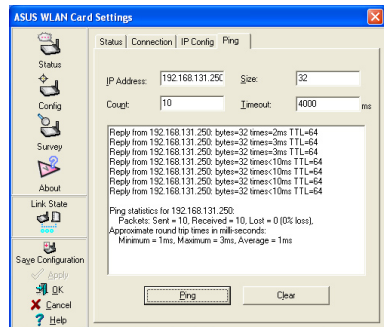


NOTE: The IP Release and IP Renew buttons can only be used on the WLAN Card which gets IP address from DHCP server.

Status - Ping

Click the "Ping" button in Status-IP Config tab to open this page. The Ping tab allows you to verify the accessibility of other computers or network devices. To ping a connection:

1. Type the IP address of the device you want to verify in the IP Address field.
2. Configure the ping session by assigning the ping packet size and number of packet to send, and the timeout value (in milliseconds).
3. Click the "Ping" button.



During the ping session, the Ping button toggles into a Stop button. To cancel the ping session, click the "Stop" button.

The session field displays information on the verified connection including the roundtrip time (minimum, maximum, and average) and packets sent, received, and lost after a ping session.

Click the "Clear" button to clear the session field.

Config - Basic

This page enables you to change the WLAN Card configurations.

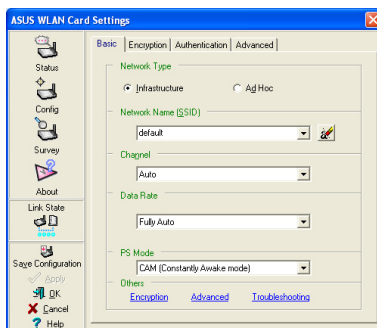
Network Type


Infrastructure – Infrastructure means to establish a connection with an access point. Once connected, the access point allows you to access wireless LAN and wired LAN (Ethernet). The Channel field turns to **Auto** if the connection is based on Infrastructure.

Ad Hoc – Ad Hoc means to communicate directly with other wireless clients without using an access point. An “Ad Hoc” network can be setup quickly and easily without pre-planning, for example, sharing meeting notes between attendants in a meeting room.

Network Name (SSID)

SSID stands for “Service Set Identifier”, which is a string used to identify a wireless LAN. Use the SSID to connect with a known access point. You can enter a new SSID or select one from the drop-down list box. If you get connected by designating the SSID, you are only to connect the AP with the SSID you assigned. If the AP is removed from the network, your WLAN Card does not roam automatically to other APs. SSIDs must all be printable characters and having a maximum of 32 case sensitive characters, such as “Wireless”.



 **NOTE: Set the SSID to a null string, if you wish to allow your station to connect to any access point it can find. But you cannot use null string in Ad Hoc mode.**

Channel

The Channel field is for setting radio channel. Your WLAN Card can automatically select the correct channel to communicate with a wireless device, and the parameter is fixed to "Auto" in both Infrastructure and Ad Hoc mode.

The available radio channels depend on the regulations in your country. For the United States (FCC) and Canada (IC), channel 1 to 11 are supported. For Europe (ETSI), channel 1 to 13 are supported. For Japan (MCK), channel 1 to 14 are supported.

 **Click Apply to save and activate the new configurations.**

Others

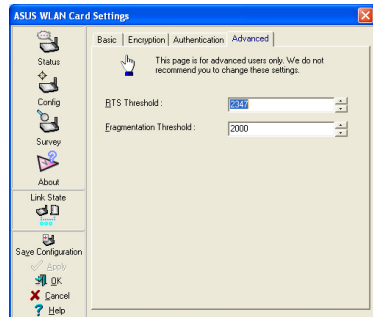
Encryption – Click this link to show the "Encryption" tab.

Advanced – Click this link to show the "Advanced" tab. In most cases, the default values do not have to be changed.

Troubleshooting – Click on this to show the Troubleshooting utility.

Config - Advanced

Click **Advanced** link on Config-Basic page to show this tab. This tab allows you to set up additional parameters for the wireless card. We recommend using the default values for all items in this window.



RTS Threshold (0-2347)

The RTS/CTS (Request to Send/Clear to Send) function is used to minimize collisions among wireless stations. When RTS/CTS is enabled, the router refrains from sending a data frame until another RTS/CTS handshake is completed. Enable RTS/CTS by setting a specific packet size threshold. The default value (2347) is recommended.

Fragmentation Threshold (256-2346)

Fragmentation is used to divide 802.11 frames into smaller pieces (fragments) that are sent separately to the destination. Enable fragmentation by setting a specific packet size threshold. If there is an excessive number of collisions on the WLAN, experiment with different fragmentation values to increase the reliability of frame transmissions. The default value (2000) is recommended for normal use.

Config - Encryption

This page enables you to configure the Wireless LAN Card encryption settings. For data confidentiality in a wireless environment, IEEE 802.11 specifies a Wired Equivalent Privacy (WEP) algorithm to offer transmission privacy. The WEP uses keys to encrypt and decrypt data packets. The encryption process can scramble frame bits to avoid disclosure to others. The WPA/WPA2 is improved security system for 802.11 which are developed to overcome the weakness of the WEP protocol.

Network Authentication

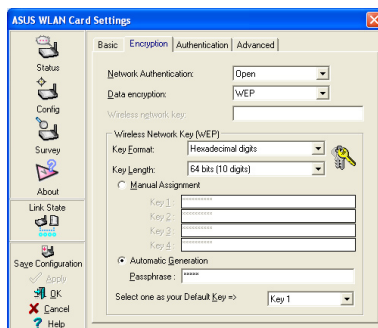
Since there is no precise bound in wireless LANs, the WLAN users need to implement certain mechanism to provide security solution. The Authentication policies in this tab provide protection of different levels such as Open, WEP, WPA, and WPA2.

Open - Select this option to make the network operate on Open System mode, which use no authentication algorithm. Open stations and APs can authenticate with each other without checking any WEP Key, even if there is.

Shared - Select this option to make the network operate on Shared key mode. In a Share Key Authentication system, four-step exchange of frames is required to validate that the station is using the same WEP Key as the access point.

WPA-PSK/ WPA2-PSK - Select this option to enable WPA Pre-Shared Key under Infrastructure mode. It enables communication between your client and APs using WPA-PSK/WPA2-PSK encryption mode.

WPA/ WPA2 - The network is operating in IEEE 802.1x authentication mode. This mode is for environments with RADIUS (Remote Access Dial-in User Service). In a RADIUS environment, various Extensible Authentication Protocol (EAP) are supported, including PEAP, TLS/Smart Card, TTLS, and LEAP.



Data encryption

For Open and Shared authentication mode, the configuration options of encryption type are Disabled and WEP. For WPA, WPA-PSK, WPA2 and WPA2-PSK authentication mode, Temporal Key Integrity Protocol (TKIP) encryption and Advanced Encryption Standard (AES) encryption are supported.

Disabled - Disable the encryption function.

WEP - WEP Key is used to encrypt your data before it is transmitted over air. You can only connect and communicate with wireless devices that use the same WEP keys.

TKIP: TKIP uses an encryption algorithm methods which is more stringent than the WEP algorithm. It also uses existing WLAN calculation facilities to perform encryption. TKIP verifies the security configuration after the encryption keys are determined.

AES: AES is a symmetric 128-bit block encryption technique which works simultaneously on multiple network layers.

Wireless Network Key

This option is enabled only if you select WPA-PSK or WPA2-PSK authentication mode. Select "TKIP" or "AES" in the encryption filed as encryption mode to begin the encryption proceed. Note: 8 to 64 characters are required in this field.

Wireless Network Key (WEP)

This option is configurable only if you enable WEP in Network Authentication field. The WEP Key is a 64 bits (5 byte) or 128 bits (13 byte) Hexadecimal digits which is used to encrypt and decrypt data packets.

Key Format

You can select to enter Hexadecimal digits (0~9, a~f, and A~F) or ASCII characters to setup keys by defining the Key Format.

Key Length

For 64 bits encryption, each key contains 10 hex digits or 5 ASCII characters. For 128 bits encryption, each key contains 26 hex digits or 13 ASCII characters.

Two ways to assign WEP keys

- 1. Manual Assignment** - When you select this option, the cursor appears in the field for Key 1. For 64-bit encryption, you are required to enter four WEP Keys. Each Key contains exactly 10 hex digits (0~9, a~f, and A~F). For 128-bit encryption, you are required to enter four WEP Keys. Each Key contains exactly 26 hex digits (0~9, a~f, and A~F).

Chapter 3 - Software Reference

- 2. Automatic Generation** - Type a combination of up to 64 letters, numbers, or symbols in the Passphrase box, the Wireless Settings Utility automatically uses an algorithm to generate four WEP Keys.

Select one as your Default Key

The Default Key field allows you specify which of the four encryption keys is to use for transmitting data over wireless LAN. You can change the default key by clicking on the downward arrow, selecting the number of the key you want to use, and clicking the “Apply” button. If the access point or station with which you are communicating uses the identical key by the same sequence, you can use any of the keys as the default on your WLAN Card.

Click the “Apply” button after you have created the encryption keys, the Wireless Settings Utility uses asterisks to mask your keys.

64/128bits versus 40/104bits

There are two levels of WEP Encryption: 64 bits and 128 bits.

Firstly, 64 bit WEP and 40 bit WEP are the same encryption method and can interoperate in the wireless network. This lower level of WEP encryption uses a 40 bit (10 Hex character) as a “secret key” (set by user), and a 24 bit “Initialization Vector” (not under user control). This together makes 64 bits (40 + 24). Some vendors refer to this level of WEP as 40 bits and others refer to this as 64 bits. Our Wireless LAN products use the term 64 bits when referring to this lower level of encryption.

Secondly, 104 bit WEP and 128 bit WEP are the same encryption method and can interoperate in the wireless network. This higher level of WEP encryption uses a 104 bit (26 Hex character) as a “secret key” (set by user), and a 24 bit “Initialization Vector” (not under user control). This together makes 128 bits (104 + 24). Some vendors refer to this level of WEP as 104 bits and others refer to this as 128 bits. Our Wireless LAN products use the term 128 bits when referring to this higher level of encryption.

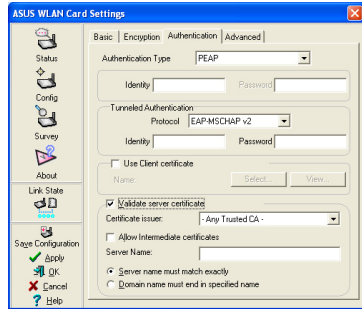
Config - Authentication

This tab allows you to set the security settings to match those of your AP. It is configurable only if you have set Network Authentication to WPA or WPA2 in Config-Encryption tab.

Authentication Type

The authentication type methods include:

PEAP: PEAP (Protected Extensible Authentication Protocol) authentication is a version of Extensible Authentication Protocol (EAP). EAP ensures mutual authentication between a wireless client and a server that resides at the network operations center.



TLS/Smart Card: TLS (Transport Layer Security) authentication is used to create an encrypted tunnel and achieve server-side authentication in a manner similar to Web server authentication using Secure Sockets Layer (SSL) protocol. This method uses digital certificates to verify the identity of a client and server.

TTLS: TTLS authentication uses certificates to authenticate the server, while maintaining similar security properties to TLS such as mutual authentication and a shared confidentiality for session WEP key.

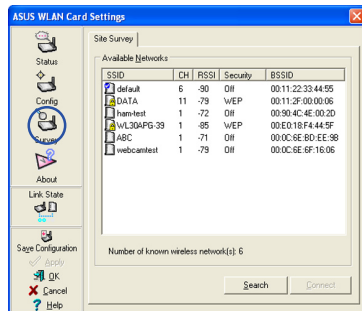
LEAP: LEAP (Light Extensible Authentication Protocol) authentication is a version of Extensible Authentication Protocol (EAP). EAP ensures mutual authentication between a wireless client and a server that resides at the network operations center.

Md5-challenge: Md5-challenge is a one-way encrypting algorithm that uses user name and passwords. This method does not support key management, but require a preset key.

Survey - Site Survey

Use the Site Survey tab to view statistics on the wireless networks available to the WLAN Card and their parameters.

- **SSID:** The SSID of the available networks.
- **Channel:** The channel used by each network.



Chapter 3 - Software Reference

- **RSSI:** The Received Signal Strength Indication (RSSI) transmitted by each network. This information is helpful in determining which network to associate to. The value is then normalized to a dBm value.
- **Encryption:** Wireless network encryption information. All devices in the network should use the same encryption method to ensure the communication.
- **BSSID:** The media access control (MAC) address of the access point or the Basic Service Set ID of the Ad Hoc node.



NOTE: Some access points may disable SSID broadcast and hide themselves from “Site Survey” or “Site Monitor”, however, you can connect such AP if you know their SSID.

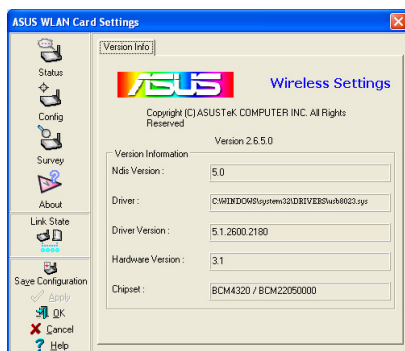
Buttons

Search – To scan all available wireless networks and show the scan result in the “Available Network” list.

Connect – To associate with a network by selecting the network from the “Available Network” list and clicking this button.

About - Version Info






Uses the Version Info tab to view program and WLAN Card version information. The program version information field includes the Copyright and utility version. The version information includes the NDIS version, driver name, and driver version.

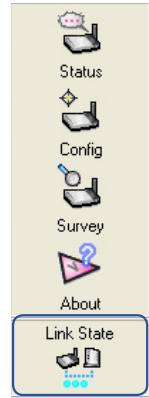


This screen is an example only. Your version numbers will be different from what are shown here.

Link State

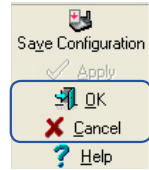
WLAN Card “Link State” icon appears on the left side of the WLAN Card Settings. Use the icon to view the current signal status.

-  Excellent Link Quality (Infrastructure)
-  Good Link Quality (Infrastructure)
-  Fair Link Quality (Infrastructure)
-  Poor Link Quality (Infrastructure)
-  Not linked (Infrastructure)



Exit Wireless Settings

To exit Wireless Settings, you can click **OK** or **Cancel**.



Windows® XP Wireless Options

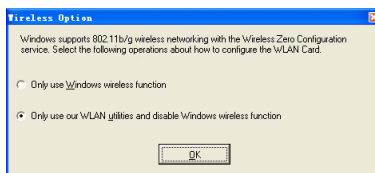
The wireless options window shown below is only available for Windows® XP. It appears when you run the Control Center utility at the first time. Select the utility you want to use for configuring your WLAN Card.

Only use Windows wireless function

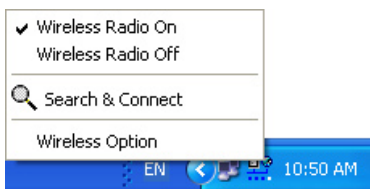
– Only use Windows® XP Wireless Zero Configuration service to configure the WLAN Card.

Only use our WLAN utilities and disable XP wireless function

– Only use ASUS WLAN utilities to configure the WLAN Card. (recommended)



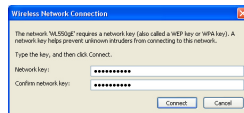
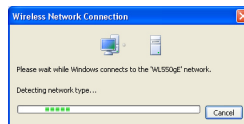
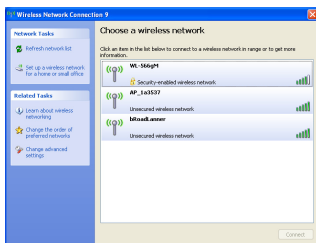
You can open the Wireless Option setting window at any time by left-clicking the control center icon and choosing **Wireless Option**.



Taskbar Left-Click Menu

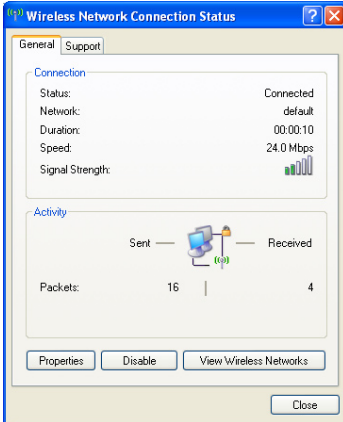
Configuring with Windows® Wireless Zero Configuration service

If you want to configure your WLAN Card via Windows® Wireless Zero Configuration (WZC) service, follow the instruction below to make the settings.

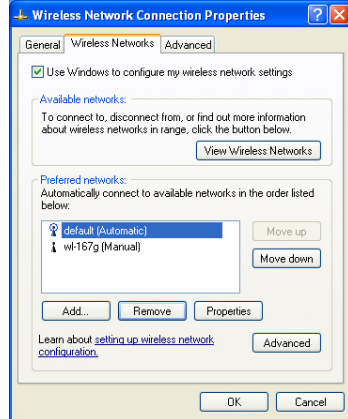


1. Double-click the wireless network icon on the task bar to view available networks. Select WL-566gM and click **Connect**.
2. A window prompts out asking you for the key if you have set up encryption on your wireless router, input the keys and click **Connect**. The connection is complete.

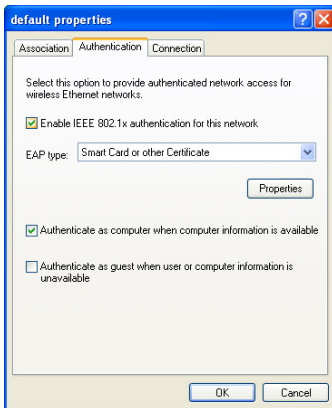
To set up the wireless connection properties, right-click the wireless icon on the taskbar and select **Open Network Connection**. Then right-click the network connection icon and select **Property** to open the Wireless Network Connection Status page.



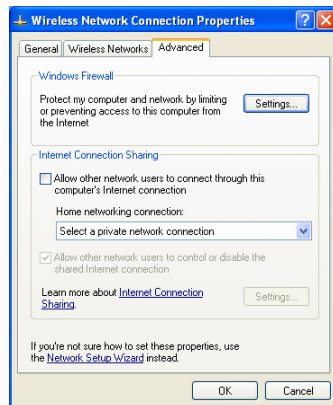
1. The **General** page shows status, duration, speed, and signal strength. Signal strength is represented by green bars with 5 bars indicating excellent signal and 1 bar meaning poor signal.



2. Select “Wireless Networks” tab to show **Preferred networks**. Use the **Add** button to add the “SSID” of available networks and set the connection preference order with the **Move up** and **Move down** buttons. The radio tower with a signal icon identifies the currently connected access point. Click **Properties** to set the authentication of the wireless connection.



3. The **Authentication** page allows you to add security settings. Read Windows help for more information.



4. The **Advanced** page allows you to set firewall and sharing. Read Windows help for more information.

4. Troubleshooting

The following troubleshooting guides provide answers to some of the more common problems, which you may encounter while installing or using WLAN Card products. If you encounter difficulties that are not mentioned in this section, please contact Wireless LAN Technical Support.

Verify if the WLAN Card is installed correctly.

When the WLAN Card setup is complete, you can verify if the driver has been setup properly. Right click **My Computer**, select **Properties**, and click the **Device Manager** tab. Then double-click the **Network adapters** icon; you should see "**802.11g Network Adapter**" with an icon of an expansion card. There should not be a "!" or "?" (problem) or "x" (disabled) symbol over this icon.

There is a yellow exclamation mark or a yellow question mark in Device Manager in front of my WLAN Card.

To resolve the problem, you should update/reinstall the WLAN Card driver. In "Device Manager", right click **802.11g Network Adapter**, select **Properties**, and select **Driver** tab. Click on **Update Driver** button, then follow the "Update Device Driver Wizard" to complete the driver installation.

Cannot connect to any access points

Follow the procedure below to configure your WLAN Card.

- a. Verify that the "Network Type" is in "Infrastructure" mode.
- b. Verify that the "SSID" of your WLAN Card is set to the same "SSID" of an access point.
- c. Verify that the "Encryption" type is the same as that of an access point. If you enabled "WEP" encryption, you must also set the same WEP Keys on both sides.

Cannot connect to a Station (WLAN Card)

Follow the procedure below to configure your WLAN Card.

- a. Verify that the "Network Type" is in "Ad Hoc" mode.
- b. Verify that the "SSID" of your WLAN Card is set to the same "SSID" of the other station (or another WLAN Card).
- c. Verify that the "channel" of the WLAN Card is "Auto" or set to the same "channel" of the other station (or another WLAN Card).
- d. Verify that the "Encryption" type is the same as the other station (or another WLAN Card). If "WEP" encryption is enabled, you must set the same "WEP" Keys on both stations.

Bad link quality or bad signal strength

There are two possible reasons. First is radio interference, keep the environment around the WLAN Card away from microwave ovens and large metal objects. Then try to reorient the WLAN Card antenna. Second is the distance, decrease the distance between your WLAN Card and the access point or station (or another WLAN Card).

The TCP/IP protocol did not bind to the WLAN PC Card.

This will occur when the computer already has six TCP/IP bindings in Windows 98 or ten bindings in Windows Me. These limits are imposed by the Microsoft operating system.

Solution: If your computer already has the maximum number of TCP/IP bindings, remove one of the network adapters from the Network configuration before installing the WLAN Card driver.

5. Glossary

Access Point (AP)

An networking device that seamlessly connects wired and wireless networks. access points combined with a distributed system support the creation of multiple radio cells that enable roaming throughout a facility.

Ad Hoc

A wireless network composed solely of stations within mutual communication range of each other (no access point).

Basic Rate Set

This option allows you to specify the data transmission rate.

Basic Service Area (BSS)

A set of stations controlled by a single coordination function.

Broadband

A type of data transmission in which a single medium (such as cable) carries several channels of data at once.

Channel

An instance of medium use for the purpose of passing protocol data units that may be used simultaneously, in the same volume of space, with other instances of medium use (on other channels) by other instances of the same physical layer, with an acceptably low frame error ratio due to mutual interference.

Client

A client is the desktop or mobile PC that is connected to your network.

COFDM (for 802.11a or 802.11g)

Signal power alone is not enough to maintain 802.11b-like distances in an 802.11a/g environment. To compensate, a new physical-layer encoding technology was designed that departs from the traditional direct-sequence technology being deployed today. This technology is called COFDM (coded OFDM). COFDM was developed specifically for indoor wireless use and offers performance much superior to that of spread-spectrum solutions. COFDM works by breaking one high-speed data carrier into several lower-speed subcarriers, which are then transmitted in parallel. Each high-speed carrier is 20 MHz wide and is broken up into 52 subchannels, each approximately 300 KHz wide. COFDM uses 48 of these subchannels for data, while the remaining four are used for error correction. COFDM delivers higher data rates and a high degree of multipath reflection recovery, thanks to its encoding scheme and error correction.

Each subchannel in the COFDM implementation is about 300 KHz wide. At the low end of the speed gradient, BPSK (binary phase shift keying) is used to encode 125 Kbps of data per channel, resulting in a 6,000-Kbps, or 6 Mbps, data rate. Using quadrature phase shift keying, you can double the amount of data encoded to 250 Kbps per channel, yielding a 12-Mbps data rate. And by using 16-level quadrature amplitude modulation encoding 4 bits per hertz, you can achieve a data rate of 24 Mbps. The 802.11a/g standard specifies that all 802.11a/g-compliant products must support these basic data rates. The standard also lets the vendor extend the modulation scheme beyond 24 Mbps. Remember, the more bits per cycle (hertz) that are encoded, the more susceptible the signal will be to interference and fading, and ultimately, the shorter the range, unless power output is increased.

Default Key

This option allows you to select the default WEP key. This option allows you to use WEP keys without having to remember or write them down. The WEP keys generated using the Pass Phrase is compatible with other WLAN products. The Pass Phrase option is not as secure as manual assignment.

Device Name

Also known as DHCP client ID or network name. Sometimes provided by an ISP when using DHCP to assign addresses.

DHCP (Dynamic Host Configuration Protocol)

This protocol allows a computer (or many computers on your network) to be automatically assigned a single IP address from a DHCP server.

DNS Server Address (Domain Name System)

DNS allows Internet host computers to have a domain name and one or more IP addresses. A DNS server keeps a database of host computers and their respective domain names and IP addresses, so that when a user enters a domain name into the Internet browser, the user is sent to the proper IP address. The DNS server address used by the computers on your home network is the location of the DNS server your ISP has assigned.

DSL Modem (Digital Subscriber Line)

A DSL modem uses your existing phone lines to transmit data at high speeds.

Direct-Sequence Spread Spectrum (for 802.11b)

Spread spectrum (broadband) uses a narrowband signal to spread the transmission over a segment of the radio frequency band or spectrum. Direct-sequence is a spread spectrum technique where the transmitted signal is spread over a particular frequency range.

Direct-sequence systems communicate by continuously transmitting a redundant pattern of bits called a chipping sequence. Each bit of transmitted data is mapped into chips and rearranged into a pseudorandom spreading code to form the chipping sequence. The chipping sequence is combined with a transmitted data stream to produce the output signal.

Wireless mobile clients receiving a direct-sequence transmission use the spreading code to map the chips within the chipping sequence back into bits to recreate the original data transmitted by the wireless device. Intercepting and decoding a direct-sequence transmission requires a predefined algorithm to associate the spreading code used by the transmitting wireless device to the receiving wireless mobile client.

This algorithm is established by IEEE 802.11b specifications. The bit redundancy within the chipping sequence enables the receiving wireless mobile client to recreate the original data pattern, even if bits in the chipping sequence are corrupted by interference. The ratio of chips per bit is called the spreading ratio. A high spreading ratio increases the resistance of the signal to interference. A low spreading ratio increases the bandwidth available to the user. The wireless device uses a constant chip rate of 11Mchips/s for all data rates, but uses different modulation schemes to encode more bits per chip at the higher data rates. The wireless device is capable of an 11 Mbps data transmission rate, but the coverage area is less than a 1 or 2 Mbps wireless device since coverage area decreases as bandwidth increases.

Encryption

This provides wireless data transmissions with a level of security. This option allows you to specify a 64-bit or a 128-bit WEP key. A 64-bit encryption contains 10 hexadecimal digits or 5 ASCII characters. A 128-bit encryption contains 26 hexadecimal digits or 13 ASCII characters.

64-bit and 40-bit WEP keys use the same encryption method and can interoperate on wireless networks. This lower level of WEP encryption uses a 40-bit (10 hexadecimal digits assigned by the user) secret key and a 24-bit Initialization Vector assigned by the device. 104-bit and 128-bit WEP keys use the same encryption method.

All wireless clients in a network must have identical WEP keys with the access point to establish connection. Keep a record of the WEP encryption keys.

Extended Service Set (ESS)

A set of one or more interconnected basic service set (BSSs) and integrated local area networks (LANs) can be configured as an Extended Service Set.

ESSID (Extended Service Set Identifier)

You must have the same ESSID entered into the gateway and each of its wireless clients. The ESSID is a unique identifier for your wireless network.

Ethernet

The most widely used LAN access method, which is defined by the IEEE 802.3 standard. Ethernet is normally a shared media LAN meaning all devices on the network segment share total bandwidth. Ethernet networks operate at 10Mbps using CSMA/CD to run over 10-BaseT cables.

Firewall

A firewall determines which information passes in and out of a network. NAT can create a natural firewall by hiding a local network's IP addresses from the Internet. A Firewall prevents anyone outside of your network from accessing your computer and possibly damaging or viewing your files.

Gateway

A network point that manages all the data traffic of your network, as well as to the Internet and connects one network to another.

IEEE

The Institute of Electrical and Electronics Engineers. The IEEE sets standards for networking, including Ethernet LANs. IEEE standards ensure interoperability between systems of the same type.

IEEE 802.11

IEEE 802.xx is a set of specifications for LANs from the Institute of Electrical and Electronic Engineers (IEEE). Most wired networks conform to 802.3, the specification for CSMA/CD based Ethernet networks or 802.5, the specification for token ring networks. 802.11 defines the standard for wireless LANs encompassing three incompatible (non-interoperable) technologies: Frequency Hopping Spread Spectrum (FHSS), Direct Sequence Spread Spectrum (DSSS), and Infrared. 802.11 specifies a carrier sense media access control and physical layer specifications for 1 and 2 Mbps wireless LANs.

IEEE 802.11a (54Mbps/sec)

Compared with 802.11b: The 802.11b standard was designed to operate in the 2.4-GHz ISM (Industrial, Scientific and Medical) band using direct-sequence spread-spectrum technology. The 802.11a standard, on the other hand, was designed to operate in the more recently allocated 5-GHz UNII (Unlicensed National Information Infrastructure) band. And unlike 802.11b, the 802.11a standard departs from the traditional spread-spectrum technology, instead using a frequency division multiplexing scheme that's intended to be friendlier to office environments.

The 802.11a standard, which supports data rates of up to 54 Mbps, is the Fast Ethernet analog to 802.11b, which supports data rates of up to 11 Mbps. Like Ethernet and Fast Ethernet, 802.11b and 802.11a use an identical MAC (Media Access Control). However, while Fast Ethernet uses the same physical-layer encoding scheme as Ethernet (only faster), 802.11a uses an entirely different encoding scheme, called OFDM (orthogonal frequency division multiplexing).

Chapter 5 - Glossary

The 802.11b spectrum is plagued by saturation from wireless phones, microwave ovens and other emerging wireless technologies, such as Bluetooth. In contrast, 802.11a spectrum is relatively free of interference.

The 802.11a standard gains some of its performance from the higher frequencies at which it operates. The laws of information theory tie frequency, radiated power and distance together in an inverse relationship. Thus, moving up to the 5-GHz spectrum from 2.4 GHz will lead to shorter distances, given the same radiated power and encoding scheme.

Compared with 802.11g: 802.11a is a standard for access points and radio NICs that is ahead of 802.11g in the market by about six months. 802.11a operates in the 5GHz frequency band with twelve separate non-overlapping channels. As a result, you can have up to twelve access points set to different channels in the same area without them interfering with each other. This makes access point channel assignment much easier and significantly increases the throughput the wireless LAN can deliver within a given area. In addition, RF interference is much less likely because of the less-crowded 5 GHz band.

IEEE 802.11b (11Mbps/sec)

In 1997, the Institute of Electrical and Electronics Engineers (IEEE) adopted the 802.11 standard for wireless devices operating in the 2.4 GHz frequency band. This standard includes provisions for three radio technologies: direct sequence spread spectrum, frequency hopping spread spectrum, and infrared. Devices that comply with the 802.11 standard operate at a data rate of either 1 or 2 Mbps.

In 1999, the IEEE created the 802.11b standard. 802.11b is essentially identical to the 802.11 standard except 802.11b provides for data rates of up to 11 Mbps for direct sequence spread spectrum devices. Under 802.11b, direct sequence devices can operate at 11 Mbps, 5.5 Mbps, 2 Mbps, or 1 Mbps. This provides interoperability with existing 802.11 direct sequence devices that operate only at 2 Mbps.

Direct sequence spread spectrum devices spread a radio signal over a range of frequencies. The IEEE 802.11b specification allocates the 2.4 GHz frequency band into 14 overlapping operating Channels. Each Channel corresponds to a different set of frequencies.

IEEE 802.11g

802.11g is a new extension to 802.11b (used in majority of wireless LANs today) that broadens 802.11b's data rates to 54 Mbps within the 2.4 GHz band using OFDM (orthogonal frequency division multiplexing) technology. 802.11g allows backward compatibility with 802.11b devices but only at 11 Mbps or lower, depending on the range and presence of obstructions.

Infrastructure

A wireless network centered about an access point. In this environment, the access point not only provides communication with the wired network but also mediates wireless network traffic in the immediate neighborhood.

IP (Internet Protocol)

The TCP/IP standard protocol that defines the IP datagram as the unit of information passed across an Internet and provides the basis for connectionless packet delivery service. IP includes the ICMP control and error message protocol as an integral part. It provides the functional equivalent of ISO OSI Network Services.

IP Address

An IP address is a 32-bit number that identifies each sender or receiver of information that is sent across the Internet. An IP address has two parts: the identifier of a particular network on the Internet and an identifier of the particular device (which can be a server or a workstation) within that network.

ISM Bands (Industrial, Scientific, and Medicine Bands)

Radio frequency bands that the Federal Communications Commission (FCC) authorized for wireless LANs. The ISM bands are located at 902 MHz, 2.400 GHz, and 5.7 GHz.

ISP (Internet Service Provider)

An organization that provides access to the Internet. Small ISPs provide service via modem and ISDN while the larger ones also offer private line hookups (T1, fractional T1, etc.).

LAN (Local Area Network)

A communications network that serves users within a defined geographical area. The benefits include the sharing of Internet access, files and equipment like printers and storage devices. Special network cabling (10 Base-T) is often used to connect the PCs together.

MAC Address (Media Access Control)

A MAC address is the hardware address of a device connected to a network.

NAT (Network Address Translation)

NAT masks a local network's group of IP addresses from the external network, allowing a local network of computers to share a single ISP account. This process allows all of the computers on your home network to use one IP address. This will enable access to the Internet from any computer on your home network without having to purchase more IP addresses from your ISP.

NIC (Network Interface Card)

A network adapter inserted into a computer so that the computer can be connected to a network. It is responsible for converting data from stored in the computer to the form transmitted or received.

Chapter 5 - Glossary

Packet

A basic message unit for communication across a network. A packet usually includes routing information, data, and sometimes error detection information.

Pass Phrase

The Wireless Settings utility uses an algorithm to generate four WEP keys based on the typed combination.

PPP (Point-to-Point Protocol)

PPP is a protocol for communication between computers using a serial interface, typically a personal computer connected by phone line to a server.

PPPoE (Point-to-Point Protocol over Ethernet)

Point-to-Point Protocol is a method of secure data transmission. PPP using Ethernet to connect to an ISP.

Preamble

Allows you to set the preamble mode for a network to Long, Short, or Auto. The default preamble mode is Long.

Radio Frequency (RF) Terms: GHz, MHz, Hz

The international unit for measuring frequency is Hertz (Hz), equivalent to the older unit of cycles per second. One megahertz (MHz) is one million Hertz. One gigahertz (GHz) is one billion Hertz. The standard US electrical power frequency is 60 Hz, the AM broadcast radio frequency band is 0.55-1.6 MHz, the FM broadcast radio frequency band is 88-108 MHz, and wireless 802.11 LANs operate at 2.4 GHz.

SSID (Service Set Identifier)

SSID is a group name shared by every member of a wireless network. Only client PCs with the same SSID are allowed to establish a connection. Enabling the **Response to Broadcast SSID requests** option allows the device to broadcast its SSID in a wireless network. This allows other wireless devices to scan and establish communication with the device. Unchecking this option hides the SSID to prevent other wireless devices from recognizing and connecting to the device.

Station

Any device containing IEEE 802.11 wireless medium access conformity.

Subnet Mask

A subnet mask is a set of four numbers configured like an IP address. It is used to create IP address numbers used only within a particular network.

TCP (Transmission Control Protocol)

The standard transport level protocol that provides the full duplex, stream service on which many application protocols depend. TCP allows a process or one machine to send a stream of data to a process on another. Software implementing TCP usually resides in the operating system and uses the IP to transmit information across the network.

WAN (Wide Area Network)

A system of LANs, connected together. A network that connects computers located in separate areas, (i.e., different buildings, cities, countries). The Internet is a wide area network.

WECA (Wireless Ethernet Compatibility Alliance)

An industry group that certifies cross-vender interoperability and compatibility of IEEE 802.11b wireless networking products and to promote that standard for enterprise, small business, and home environments.

WPA (Wi-Fi Protected Access)

Wi-Fi Protected Access (WPA) is an improved security system for 802.11. It is part of the 802.11i draft security standard. WPA encompasses TKIP (Temporal Key Integrity Protocol) along with MIC (Message Integrity Check) and other fixes to WEP such as Weak IV (Initialization Vector) filtering and Random IV generation. TKIP uses 802.1x to deploy and change temporary keys as opposed to static WEP keys once used in the past. It is a significant improvement over WEP. WPA is part of a complete security solution. WPA also requires authentication servers in enterprise security solutions.

Requirements

(1) A WPA compatible access point or Wireless router, (2) Operating system updates that support WPA. In XP, an updated Windows Zero Config service is needed. Users can download the Windows XP WPA patch here:

<http://microsoft.com/downloads/details.aspx?FamilyId=009D8425-CE2B-47A4-ABEC-274845DC9E91&displaylang=en>

Please note that this patch requires the installation Windows XP Service Pack 1, which is available here: <http://www.microsoft.com/WindowsXP/pro/downloads/servicepacks/sp1/default.asp>

For earlier Windows Operating systems, a WPA capable supplicant is required such as Funk Software's Odyssey Client.

WLAN (Wireless Local Area Network)

This is a group of computers and other devices connected wirelessly in a small area. A wireless network is referred to as LAN or WLAN.

6. Appendix



FCC Warning Statement

This device complies with Part 15 of the FCC Rules. Operation is subject to the following two conditions:

- (1) this device may not cause harmful interference, and
- (2) this device must accept any interference received, including interference that may cause undesired operation.

This equipment has been tested and found to comply with the limits for a class B digital device, pursuant to part 15 of the FCC Rules. These limits are designed to provide reasonable protection against harmful interference in a residential installation.

This equipment generates, uses and can radiate radio frequency energy and, if not installed and used in accordance with the instructions, may cause harmful interference to radio communications. However, there is no guarantee that interference will not occur in a particular installation. If this equipment does cause harmful interference to radio or television reception, which can be determined by turning the equipment off and on, the user is encouraged to try to correct the interference by one or more of the following measures:

- Reorient or relocate the receiving antenna.
- Increase the separation between the equipment and receiver.
- Connect the equipment into an outlet on a circuit different from that to which the receiver is connected.
- Consult the dealer or an experienced radio/TV technician for help.



CAUTION:

Any changes or modifications not expressly approved by the party responsible for compliance could void the user's authority to operate the equipment.

Prohibition of Co-location

This device and its antenna(s) must not be co-located or operating in conjunction with any other antenna or transmitter

Safety Information

To maintain compliance with FCC's RF exposure guidelines, this equipment should be installed and operated with minimum distance 20cm between the radiator and your body. Use on the supplied antenna.

Declaration of Conformity for R&TTE directive 1999/5/EC

Essential requirements – Article 3

Protection requirements for health and safety – Article 3.1a

Testing for electric safety according to EN 60950-1 has been conducted. These are considered relevant and sufficient.

Protection requirements for electromagnetic compatibility – Article 3.1b

Testing for electromagnetic compatibility according to EN 301 489-1 and EN 301 489-17 has been conducted. These are considered relevant and sufficient.

Effective use of the radio spectrum – Article 3.2

Testing for radio test suites according to EN 300 328- 2 has been conducted. These are considered relevant and sufficient.

CE Mark Warning



This is a Class B product, in a domestic environment, this product may cause radio interference, in which case the user may be required to take adequate measures.

Free Manuals Download Website

<http://myh66.com>

<http://usermanuals.us>

<http://www.somanuals.com>

<http://www.4manuals.cc>

<http://www.manual-lib.com>

<http://www.404manual.com>

<http://www.luxmanual.com>

<http://aubethermostatmanual.com>

Golf course search by state

<http://golfingnear.com>

Email search by domain

<http://emailbydomain.com>

Auto manuals search

<http://auto.somanuals.com>

TV manuals search

<http://tv.somanuals.com>