

# QUICK-TEST GUIDE

Ascensia™ DEX® 2 Meter uses the Ascensia™ AUTODISC™ Test Strips.

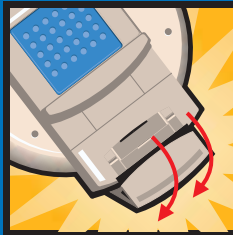


## LOADING

### THE 10-TEST DISC

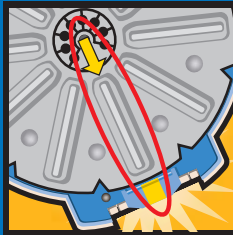
1.

Open meter by releasing end latch.



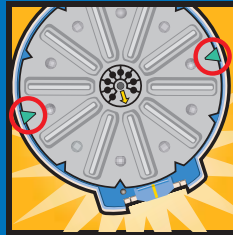
2.

Insert 10-Test disc bumpy side up. Line up yellow arrow on the disc with yellow line on meter.



3.

Gently press disc into place under two blue meter tabs.



4.

Close meter and snap end latch shut. Meter is now coded and ready to test.



Ascensia  
**DEX<sup>2</sup>**  
Diabetes Care System

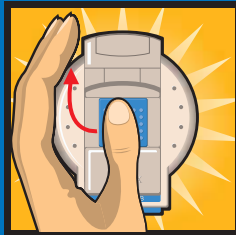


## TESTING YOUR BLOOD SUGAR

# QUICK-TEST GUIDE

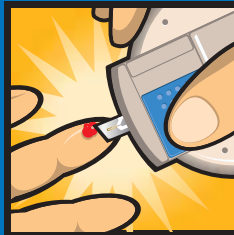
1.

Move pad left and hold while sliding forward. When pad is all the way forward, test strip appears and display shows flashing drop.



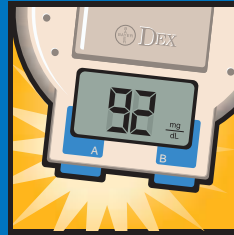
2.

Hold your finger level with drop of blood. Bring meter in from side to blood drop, letting entire front edge of test strip touch surface of drop. Hold until you hear a beep. The difference: Blood drop is drawn into test strip, not put on test strip.



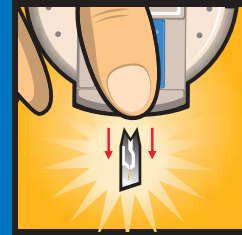
3.

Read results in 30 seconds.



4.

Move slide back with meter pointing down over waste container (Please avoid touching the blue button.) The test strip is released and should be discarded. The meter is turned off.



### QUESTIONS?

Please refer to the Ascensia™ DEX®2 User Guide for complete operating instructions and other important information. Bayer Customer Service provides personal assistance when you need it. Call **1-800-348-8100**.

© 2003 Bayer HealthCare LLC, Diagnostics Division  
www.ascensia.com  
www.bayercarediabetes.com  
www.ascensiadreamfund.com  
0391324 Rev. 2/03



Bayer HealthCare

## Free Manuals Download Website

<http://myh66.com>

<http://usermanuals.us>

<http://www.somanuals.com>

<http://www.4manuals.cc>

<http://www.manual-lib.com>

<http://www.404manual.com>

<http://www.luxmanual.com>

<http://aubethermostatmanual.com>

Golf course search by state

<http://golfingnear.com>

Email search by domain

<http://emailbydomain.com>

Auto manuals search

<http://auto.somanuals.com>

TV manuals search

<http://tv.somanuals.com>