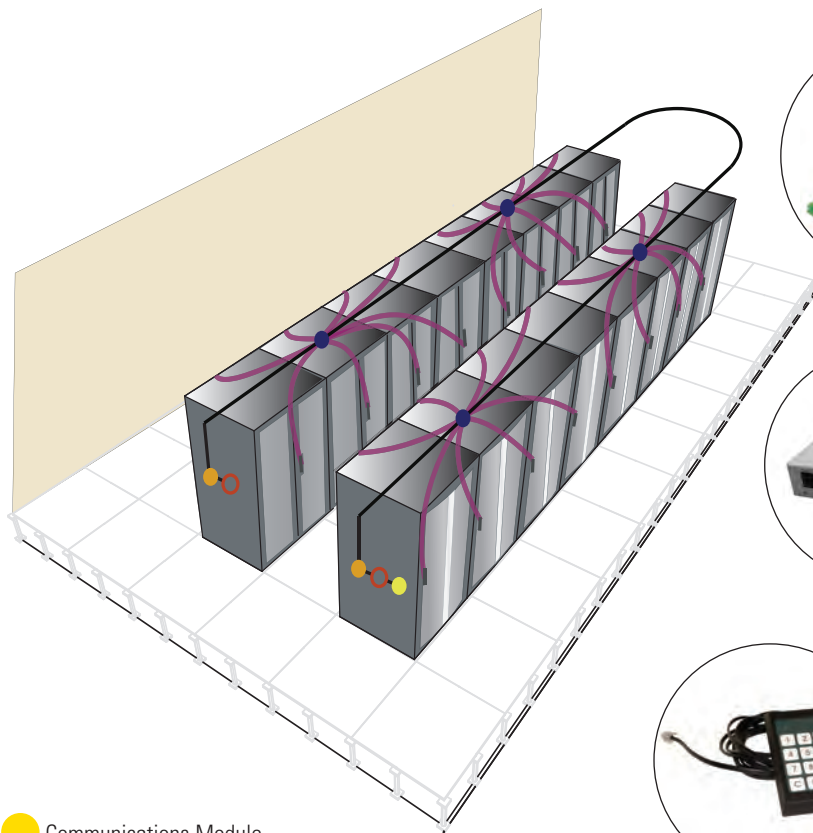


PRODUCT APPLICATION

Electronic Locking System For CPI Cabinets

Automate access control and monitoring in your data center, computer room and network facilities with the Electronic Locking System.

- Automate data center cabinet access control and monitoring
- IP addressable system increases security
- Assign and program individual user ID access codes
- Access cabinets via a network-connected computer, keypad or proximity cards
- Create a log entry for each access attempt and configuration change
- Monitor handle conditions — opened or closed
- Forward SNMP traps to designated computers during alarm conditions
- Quickly update the system configuration and users privileges
- Easily add modules as your network grows



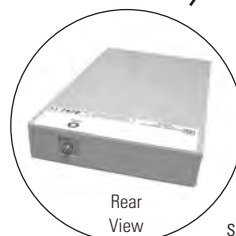
● Communications Module

● Electronic Lock Upgrade Kit (2 per cabinet)
with Electronic Lock Extension Cable

● Electronic Lock Control Module (8 handle)

● Keypad Module
with Keypad Module Cable

● Proximity Card Reader Module



Rear
View

Communications Module (required) — Provides a single IP addressable network connection for the Electronic Locking System and is used to setup and configure the system. Each Communications Module can support any combination of up to 64 Electronic Lock Control Modules (512 handles, 256 cabinets), 64 Keypad Modules and 64 Proximity Card Reader Modules. Control access to equipment with computer terminals using the included lock control software. Provide alarm outputs for unauthorized entries. The software also keeps a log of each access attempt and all configuration changes.

Electronic Lock Upgrade Kit (required) — Replace the mechanical lock on the cabinet's swing handle with an electronic solenoid that releases the spring-loaded handle when the correct code is entered. When the correct code is entered, the handle springs open allowing the door to be opened.

Electronic Lock Control Module (required) — Connects upgraded electronic locks to the Electronic Locking System and controls the solenoid that opens the cabinet handles. Each Electronic Lock Control Module connects eight handles (four cabinets) to the system. Each handle can have up to five access codes and can be assigned to 24 user groups. The Electronic Lock Control Module also reports the status of the handle (opened or closed).

Keypad Module (recommended) — Enter an authorized access code on the Keypad Module to open a handle. The Keypad Module can be placed on or near the cabinets and can open any of the cabinet handles in the system.

Proximity Card Reader Module (optional) — Use with the Keypad Module. The proximity card acts like a key replacing the access code. The proximity card can be programmed with a specific handle access code or with up to 24 user group codes to open multiple cabinets. Proximity cards can also be programmed to open handles a specific number of times and to expire at a specific time and date.



CHATSWORTH PRODUCTS, INC.

SOLUTION OVERVIEW:

- User specific accounts - assign each authorized user access to specific cabinets with an individual access code or proximity card
- Records each access attempt - the lock control software keeps a log with records of each access attempt and each configuration change
- Quick changes to access permissions - software allows the system administrator to add or remove authorized users and change access codes and permissions quickly
- Create multiple user groups - the system administrator can associate users and latches by a group number to restrict access by service group, authorization level, facility or region with the lock control software
- Remote access control over the network - the lock control software lets authorized users see the status of all latches and open door latches remotely
- Generates alarm outputs for unauthorized entries - the Communications Module has two alarm relay outputs that can be used to send SNMP traps to designated computers, operate external devices or to connect to the CPI Remote Infrastructure Management (RIM-600) System to notify you if there is an unauthorized entry
- Grows with your network - simply add modules as your network grows; a single network connection provides access to 256 cabinets (512 swing handles)
- Connect the Communications, Electronic Lock Control and Proximity Card Reader Modules with RJ-45 patch cords; connect Keypad Modules with Keypad Module Cables; connect Electronic Lock Upgrade Kits and Electronic Lock Control Modules with Electronic Lock Extension Cables

ORDERING INFORMATION

Part Number	Description	Shipping Weight
16147-050	Communications Module	5 lb (2.3 kg)
16147-010	Electronic Lock Upgrade Kit for Enhanced SteelFrame Cabinet for the Front or Rear Door (1/Door)	1 lb (0.5 kg)
16147-060	Electronic Lock Upgrade Kit for TeraFrame™ Cabinet System with a Single Solid or Perforated Front Door (1/Door)	3 lb (1.4 kg)
16147-061	Electronic Lock Upgrade Kit for TeraFrame Cabinet System with a Single Solid Plexiglass Front Door (1/Door)	3 lb (1.4 kg)
16147-062	Electronic Lock Upgrade Kit with Integrated Keypad Module for a TeraFrame Cabinet with a Single Solid or Perforated Front Door (1/Door)	4 lb (1.8 kg)
16147-063	Electronic Lock Upgrade Kit for TeraFrame Cabinet System with a Single or Double Solid or Perforated Rear Door (1/Door)	2 lb (0.9 kg)
16147-052	Electronic Lock Control Module for 8 Swing Handles	5 lb (2.3 kg)
16147-008	Keypad Module with (1) Keypad Module Cable	1 lb (0.5 kg)
16147-054	Proximity Card Reader Module	5 lb (2.3 kg)
60070-007	Network Patch Cord, RJ-45, 7'L (2.1 m)	1 lb (0.5 kg)
60070-014	Network Patch Cord, RJ-45, 14'L (4.3 m)	1 lb (0.5 kg)
60070-025	Network Patch Cord, RJ-45, 25'L (7.6 m)	1 lb (0.5 kg)
16147-015	Electronic Lock Extension Cable, 16'L (5 m)	1 lb (0.5 kg)
16147-016	Keypad Module Cable, 9'L (2.7 m)	1 lb (0.5 kg)



16147-050



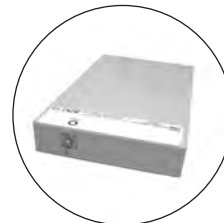
16147-060



16147-062



16147-052



16147-054



16147-008

Note: Contact CPI Technical Support to configure TeraFrame Cabinets with electronic locks.

RECOMMENDED ACCESSORIES:

Part Number	Description	Shipping Weight
60000-001	Remote Infrastructure Management (RIM-600) System Host Module	14 lb (6.4 kg)
60052-002	Door Open/Closed Sensor	1 lb (0.5 kg)
60065-001	Axis® Network Camera	1 lb (0.5 kg)
60050-001	Dry Contact Bridge (NO/NC)	1 lb (0.5 kg)
60061-007	Motion Sensor, Passive Infrared	1 lb (0.5 kg)



60000-001

Not exactly what you need?
For complete information visit
www.chatsworth.com/locks.



CHATSWORTH PRODUCTS, INC.

All products quoted are subject to availability based on manufacturing capacity and shipping dates should be considered estimates only. While every effort has been made to ensure the accuracy of all information, CPI does not accept liability for any errors or omissions and reserves the right to change information and descriptions of listed services and products.

©2009 Chatsworth Products, Inc. All rights reserved. CPI, CPI Passive Cooling, Saf-T-Grip, Seismic Frame, SlimFrame and MegaFrame are federally registered trademarks of Chatsworth Products, Inc. Cube-IT Plus, Evolution, OnTrac, QuadraRack, Simply Efficient and TeraFrame are trademarks of Chatsworth Products, Inc. All other trademarks belong to their respective companies. MKT-60020-355 Rev.3 01/09

Free Manuals Download Website

<http://myh66.com>

<http://usermanuals.us>

<http://www.somanuals.com>

<http://www.4manuals.cc>

<http://www.manual-lib.com>

<http://www.404manual.com>

<http://www.luxmanual.com>

<http://aubethermostatmanual.com>

Golf course search by state

<http://golfingnear.com>

Email search by domain

<http://emailbydomain.com>

Auto manuals search

<http://auto.somanuals.com>

TV manuals search

<http://tv.somanuals.com>