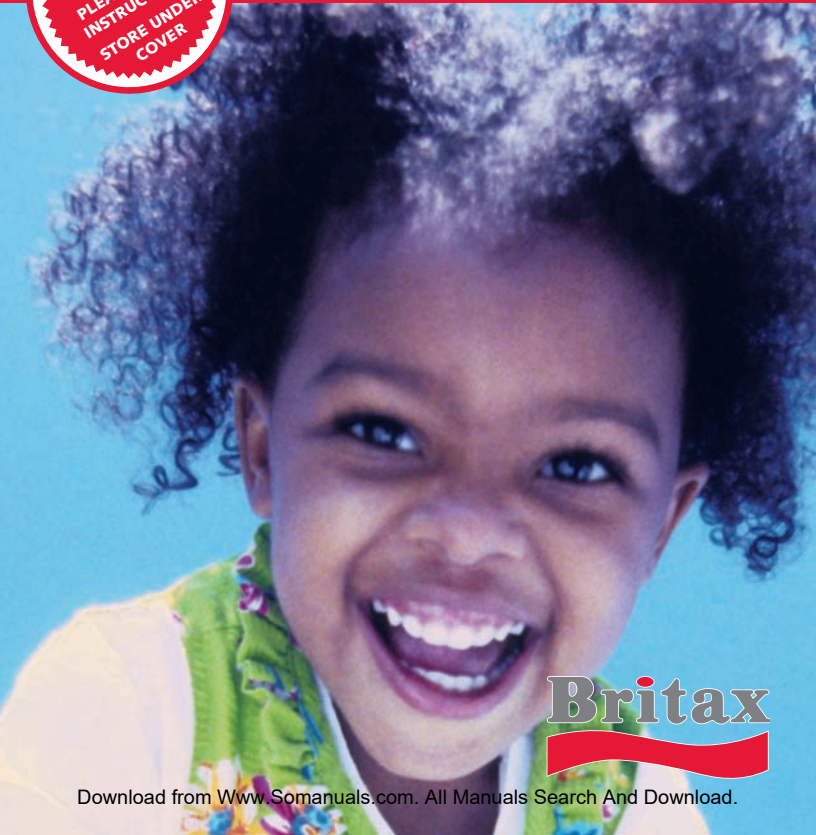


Roundabout®

User Guide



Britax

Safety Information	
Warnings	2
Important Notes	4
Certification	5
Registration	5
Important Harness Adjustments	6
Child Seat Features	8
Vehicle Compatibility	
Vehicle Safety Belts	10
Vehicle Buckle Positions	11
Vehicle Seating Positions	11
Installation: Rear-facing	
LATCH Installation	12
Lap-Shoulder Belt Installation	14
Lap-Belt Installation	16
Installation: Forward-facing	
LATCH Installation	18
Lap-Shoulder Belt Installation	20
Lap-Belt Installation	22
Installation: Aircraft	24
Installation: Versa-Tether®	
Safety Information	25
Using the Versa-Tether®	26
Tether-Connector Strap	27
Energy-Absorbing Tether	28
Child Seat Functions	
Switching the LATCH Connectors	29
Storing the LATCH Connectors	30
Recline Adjustment	30
Chest Clip	30
Harness Buckle	31
How to Adjust Harness Slot Height	32
Securing Your Child	32
Care and Maintenance	34
Warranty	38



WARNING!

DEATH or SERIOUS INJURY can occur if the following are not observed:

- Use only with children who weigh between 5 and 40 pounds (2.3 and 18.1 kg.) and whose height is 40 inches (101.6 cm.) or less. Use rear-facing for children 5 – 35 pounds (2.3 –15.9 kg.) and forward-facing 20 – 40 pounds (9.1 – 18.1 kg.).
- Adjust the belts provided with this child seat so they fit snugly around your child. A snug strap should not allow any slack. It lies in a relatively straight line without sagging. It does not press on the child's flesh or push the child's body into an unnatural position.
- Secure the top tether strap provided with this child seat.
- Secure this child seat with vehicle's child seat **Lower Anchors and Tethers for CHildren (LATCH)** system if available or with a vehicle belt.
- Follow all instructions on this child seat and in the written instructions.
- Register your child seat with the manufacturer, Britax Child Safety, Inc. by visiting www.BritaxUSA.com/registration, OR fill out the registration card that was shipped with this child seat.
- To prevent injury due to deterioration or hidden damage, discontinue use of a child seat that is older than six years or has been in a moderate or severe crash. See date of manufacture located on child seat.
- This child seat must not be used in the home, in boats, or in other non-certified applications.
- Based on crash statistics, the National Highway Traffic Safety Administration (NHTSA) recommends that parents select the back seat as the safest location for a properly installed child seat. Please study the [Vehicle Safety Belts](#) section in this booklet to ensure your child's safety and consult your vehicle owner's manual.
- Secure this child seat even when it is not occupied. In a crash, an unsecured child seat may injure vehicle occupants.
- When using in a vehicle with air bags, refer to your vehicle owner's manual for child seat installation instructions and precautions.
- Never use adjuster strap to lift or carry this child seat. Doing so could cause damage to harness adjuster and webbing. Always carry this child seat by its shell or tether straps.
- The primary protection for vehicle occupants in a collision is the body of the vehicle itself; a child seat will not protect a child when a vehicle is seriously impacted. However, correctly installed, a child seat will substantially improve the chances for survival in most crashes. Make sure all users fully understand the correct ways to use this child seat in a vehicle.

Important Notes

- Verify that the child seat is secure and the harness is properly adjusted around the child each time the child seat is used.
- Adjust the harness to fit the clothes the child is wearing. Remove bulky coats and/or jackets before putting the child in child seat.
- Cover the child seat when the vehicle is parked in direct sunlight. Parts of child seat could become hot enough to burn a child.
- Store the child seat in a safe place when it is not being used. Avoid placing heavy objects on top of it.
- Do not leave children alone in a vehicle, even for a short time.
- Do not, except as described in this booklet, attempt to disassemble any part of the child seat or change the way the harness or vehicle's seat belts are used.
- Do not leave loose objects, e.g. books, bags, etc., in the back of a vehicle. In the event of a sudden stop, loose objects will keep moving, potentially causing serious injuries.
- Do not leave folding vehicle seats unlatched. In event of a sudden stop, a loose seat back could prevent child seat from protecting the child as well as it should.
- Do not allow children to play with this or any child seat.
- Do not use anything to raise the child seat off vehicle seat except as described in these instructions. In a crash, the child seat could slide and may not adequately protect the child.

Certification

This child seat system conforms to all applicable Federal Motor Vehicle Safety Standards. This child seat is certified for use in motor vehicles and aircraft.

Registration

Child seats can be recalled for safety reasons. You must register this child seat to be reached in a recall. Send your name, address, and the child seat's model number and manufacturing date to Britax Child Safety, Inc., 13501 South Ridge Drive Charlotte, NC 28273, or call 1-888-4BRITAX, or register online at www.BritaxUSA.com/registration. For recall information, call the U.S. Government's Vehicle Safety Hotline at 1-888-327-4236 (TTY 1-800-424-9153), or go to <http://www.NHTSA.gov>.



WARNING! DO NOT place a child seat rear-facing in the front seat of a vehicle with a passenger air bag unless deactivated. DEATH or SERIOUS INJURY can occur. See your vehicle owner's manual for child seat installation instructions. The back seat is the safest place for children under 12.

Important Harness Adjustments

According to the American Academy of Pediatrics:

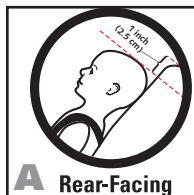
All infants should ride rear-facing until they have reached at least 1 year of age **and** weigh at least 20 pounds. That means that if your infant reaches 20 pounds before her first birthday, she should remain rear-facing at least until she turns 1 year old. It is best for children to ride rear-facing to the highest weight or height allowed by the manufacturer.

Rear-Facing

Weight 5 – 35 pounds (2.3 – 15.9 kg).

Use rear-facing only with children:

- *who weigh between 5 and 35 lbs. (2.3 – 15.9 kg.) and*
- *the top of the child's head is 1" (2.5 cm.) or more below the top of the child seat (Fig. A) and*
- *the harness straps are in the nearest slots at or below the child's shoulders.*



If the child cannot be secured within these requirements because the child exceeds height or weight requirements, review the forward-facing guidelines on page 7.

If the child cannot be secured within these requirements because the child is too small, selection of a different child seat (such as an infant carrier) may be required.

IMPORTANT: See [How to Adjust Harness Slot Height](#) on page 32.



WARNING!

Do NOT use the child seat rear-facing if:

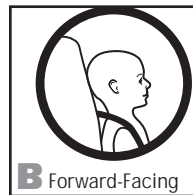
- *the child is less than 5 lbs. (2.3 kg.) in weight or*
- *the child exceeds 35 lbs. (15.9 kg.) in weight or*
- *the top of the head is less than 1" (2.5 cm.) from the top of the child seat (Fig. A) or*
- *the harness straps are in a slot above the child's shoulders.*

Forward-Facing

Weight 20 pounds (and 1 year) – 40 pounds (9.1 – 18.1 kg.)

Use forward-facing only with children:

- *who are at least one year of age and*
- *who weigh between 20 and 40 lbs. (9.1 – 18.1 kg.) and*
- *40" (101.6 cm) or less in height and*
- *the top of the child's ears are below the top of the child seat and*
- *the harness straps are in the nearest slots at or above the child's shoulders, (Fig. B).*



IMPORTANT: See [How to Adjust Harness Slot Height](#) on page 32.



WARNING!

Do NOT use the child seat forward-facing if:

- *the child is less than one year of age or*
- *the child is less than 20 lbs. (9.1 kg.) in weight or*
- *the child exceeds 40 lbs. (18.1 kg.) in weight or*
- *the child exceeds 40" (101.6 cm) in height or*
- *the top of the ears are above the top of the child seat or*
- *the top harness slots fall below the child's shoulders.*



- 1 Cover
- 2 Serial Number and Manufactured Date (Under Cover)
- 3 Shell
- 4 Forward-Facing Lock-Off
- 5 Forward-Facing Belt Path
- 6 Rear-Facing Belt Path
- 7 Rear-Facing Lock-Off
- 8 Base
- 9 Versa-Tether® (Top Anchorage Strap)-in pouch
- 10 Harness Straps
- 11 Harness Yoke
- 12 Belt Guard



- 13 LATCH Adjuster Release Button
- 14 LATCH Adjuster
- 15 LATCH Connector Release Button
- 16 LATCH Connector (Stored Under Cover)
- 17 Chest Clip
- 18 Harness Holders
- 19 Harness Buckle
- 20 Harness-Adjuster Release Button
- 21 Harness Adjuster Strap
- 22 Recline Handle (Front of Base)

IMPORTANT: When not in use, this user guide should be stored under the cover. **DO NOT discard the foam inserts found under the cover.**



Vehicle Safety Belts

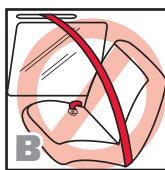
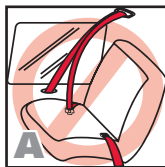
NOTE: The information in this section only applies to installation with vehicle safety belts.

IMPORTANT: Vehicle seats and safety belts differ from vehicle to vehicle. Refer to your vehicle owner's manual for specific information about vehicle safety belts and their use with child seats. Some vehicles have no seating positions which are compatible with this child seat or any other child seat. If in doubt, contact the vehicle manufacturer for assistance.

This child seat can fit securely in most vehicles using existing vehicle belts. However, some vehicle designs prevent a secure fit of the child seat. The vehicle owner's manual will have information on the types of vehicle belts in your vehicle. If your belt type is listed below, select another seating position or use Lower Anchors and Tethers for Children (LATCH).

WARNING! The following types of vehicle belts are not compatible with this child seat:

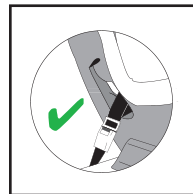
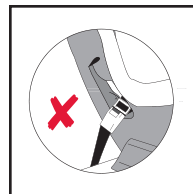
- Front vehicle belts with top or bottom anchorage points in the door. (Fig. A & B)
- Motor-driven, automatic vehicle belts. (Fig. B)
- Lap-shoulder belts that have separate retractors for shoulder section and lap section in which lap section retractor does not lock.
- Non-locking, two-point Emergency Locking Retractor (ELR) vehicle belts.
- Lap-shoulder ELR vehicle belts without use of the lock-off.



NOTE: Refer to your vehicle owner's manual to determine the kind of retractors used in your vehicle and how to operate them.

Vehicle Buckle Positions

WARNING! The position of the vehicle belt buckle can adversely affect the stability of the child seat.

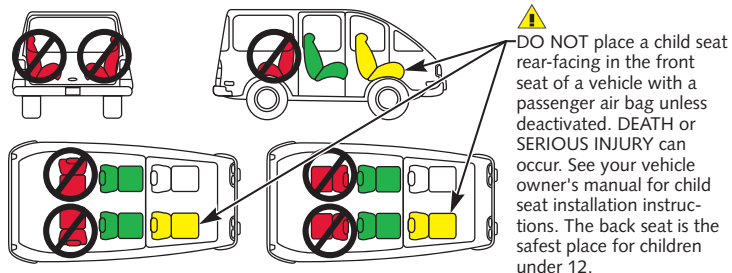


If the buckle lies near the position marked wrong (X) when the vehicle belt is tightened, try fitting the child seat in another seating position in the vehicle OR consult your vehicle owner's manual to see if you can lower the vehicle buckle position by twisting the vehicle buckle stalk.

If it is not possible to achieve the correct position (✓) for the buckle, then another seating position MUST be used.

Vehicle Seating Positions

WARNING! Forward-facing vehicle seats MUST be used with this child seat. Side-facing or rear-facing seats CANNOT be used. See diagram below.



LATCH Installation

- Figure A illustrates a typical rear-facing LATCH installation.
- Verify that your vehicle is equipped with LATCH anchors. If LATCH anchors are not available, you must use vehicle belt installation methods.

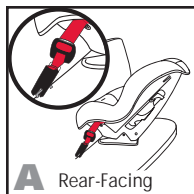
- 1 If stored, remove the LATCH strap and connectors from the storage slots under the cover. See page 30.
- 2 Press and hold each LATCH adjuster release button, then pull each LATCH strap to full length.

IMPORTANT: The LATCH strap must rest behind the child seat buckle.

- 3 Thread each LATCH connector through adjacent rear-facing belt slot (Fig. B).
- 4 LATCH connectors should be in an upright position (as shown in figure C).
- 5 Fully recline the child seat and place it sideways on the vehicle seat with the front facing toward you.
 - See [Recline Adjustment](#) on page 30.
- 6 Verify that the LATCH strap is not twisted and attach the closest LATCH connector to the vehicle seat back to the farthest LATCH anchor (Fig. D).
- 7 Rotate the child seat into the rear-facing position.
- 8 Verify that the LATCH strap is not twisted and attach the remaining LATCH connector to the adjacent LATCH anchor (Fig. E).

NOTE: It may be necessary to switch the LATCH connectors as shown on page 29 if ANY of the following conditions exist:

- LATCH connector is not in an upright position as shown in figure C.
- LATCH strap is twisted.

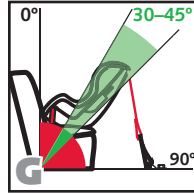


- A positive click is NOT heard when the LATCH connector and LATCH anchor are connected.

NOTE: If a positive click is not heard, but the LATCH connector is in an upright position, you should not switch the LATCH connectors. The strap may be too tight or twisted, or there may be debris in the LATCH connector.

- 9 Push the child seat firmly into the vehicle seat while pulling each LATCH adjuster strap tight (Fig. F).
- 10 Verify all connections are secure and that the child seat is secure.

- When properly installed in the rear-facing position, the back angle of the child seat should be 30° – 45° from vertical (not to exceed 45°) when the car is parked on a level surface (Fig. G).
- If necessary, the proper recline angle can be achieved by placing a rolled towel or pool noodle in the crease of the vehicle seat to level the child seat's base.
- Rear-facing installation can be improved by the use of the Versa-Tether® see pages 25 – 28.
- The child seat is secure when it cannot be moved more than one inch (2.5 cm) front-to-back or side-to-side at the belt path.



WARNING! Do not raise the child seat off the front edge of the vehicle seat. This could cause your child seat not to perform as intended.

Removal

- If connected, disconnect the Versa-Tether® from the tether anchor.
- Release each LATCH harness from the LATCH anchor by pressing the red release button on the LATCH connector.
- When not in use, always store the LATCH connectors in storage slots. See page 30.

Lap-Shoulder Belt Installation

- Figure A illustrates a typical rear-facing, lap-shoulder belt installation.
- When not in use, always store LATCH connectors in storage slots. See page 30.

1 Fully recline the child seat then place it rear-facing on the vehicle seat.

- See Recline Adjustment on page 30.

2 Lift the child seat cover and open the rear-facing lock-off farthest from where the vehicle belt will be buckled (Fig. B).

3 Pull the vehicle belt out then pass it through the first rear-facing belt slot (Fig. C).

- Vehicle belt can be routed over or under cover.

4 Route the vehicle belt across child seat then through the second rear-facing belt slot.

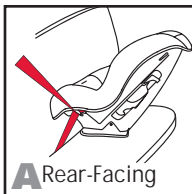
IMPORTANT: The vehicle belt must rest behind the child seat buckle.

5 Verify that the vehicle belt is not twisted and then buckle (Fig. D).

6 Push the child seat firmly into the vehicle seat while removing slack first from the lap portion of the vehicle belt, then the shoulder portion (Fig. E).

7 Position both sections of the vehicle belt through the lock-off, then close the lock-off arm and replace the child seat cover (Fig. F).

- Lock-off is properly closed when a positive click is heard.
- To prevent breakage, never extend the lock-off arm beyond its normal open position and always keep the lock-off closed when not in use.
- If your vehicle is equipped with an automatic locking retractor (ALR), use of lock-offs is not required as long as the ALR is locked. Check your vehicle owner's manual to determine what type of retractor your vehicle has, and how to lock the retractor.

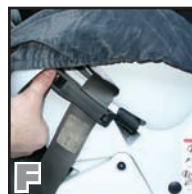


8 Verify that the vehicle belt is tight and that the child seat is secure.

- When properly installed in the rear-facing position, the back angle of the child seat should be 30° – 45° from vertical (not to exceed 45°) when the car is parked on a level surface (Fig. G).
- If necessary, the proper recline angle can be achieved by placing a rolled towel or pool noodle in the crease of the vehicle seat to level the child seat's base.
- Rear-facing installation can be improved by the use of the Versa-Tether® see pages 25 – 28.
- The child seat is secure when it cannot be moved more than one inch (2.5 cm) front-to-back or side-to-side at the belt path

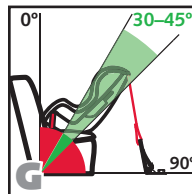


WARNING! Do not raise the child seat off the front edge of the vehicle seat. This could cause your child seat not to perform as intended.



Removal

- If connected, disconnect the Versa-Tether® from the tether anchor.
- Press the red release button on the vehicle belt buckle and pull the vehicle buckle from the child seat belt path.



Lap-Belt Installation

- Figure A illustrates a typical rear-facing, lap-belt installation.
- When not in use, always store the LATCH connectors in storage slots. See page 30.

1 Fully recline the child seat, then place it rear-facing on vehicle seat.

- See [Recline Adjustment](#) on page 30.

2 Lift the child seat cover and open rear-facing lock-off farthest from where the vehicle belt will be buckled (Fig. B).

3 Pull the vehicle belt out and pass it through the closest rear-facing belt slot (Fig. C).

- The vehicle belt can be routed over or under the child seat cover.

4 Route the vehicle belt across the child seat then through the second rear-facing belt slot.

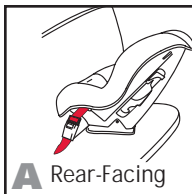
IMPORTANT: The vehicle belt must rest behind the child seat buckle.

5 Verify that the vehicle belt is not twisted and buckle (Fig. D).

6 Push the child seat firmly into the vehicle seat while removing slack from the vehicle belt.

7 Position the vehicle belt through the lock-off, tighten the belt, then close the lock-off arm (Fig. E) and replace the cover.

- Lock-off is properly closed when a positive click is heard.
- To prevent breakage, never extend the lock-off arm beyond its normal open position and always keep lock-off closed when not in use.
- If your vehicle is equipped with an automatic locking retractor (ALR), use of lock-offs is not required as long as the ALR is locked. Check your vehicle owner's manual to determine what type of retractor your vehicle has, and how to lock the retractor.

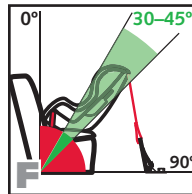


8 Verify that the vehicle belt is tight and that the child seat is secure.

- When properly installed in the rear-facing position, the back angle of the child seat should be 30° – 45° from vertical (not to exceed 45°) when the car is parked on a level surface (Fig. F).
- If necessary, the proper recline angle can be achieved by placing a rolled towel or pool noodle in the crease of the vehicle seat to level the child seat's base.
- Rear-facing installation can be improved by the use of the Versa-Tether® see pages 25 – 28.
- The child seat is secure when it cannot be moved more than one inch (2.5 cm) front-to-back or side-to-side at the belt path.



WARNING! Do not raise the child seat off the front edge of the vehicle seat. This could cause your child seat not to perform as intended.



Removal

- If connected, disconnect the Versa-Tether® from the tether anchor.
- Press the red release button on the vehicle belt buckle and pull the vehicle buckle from the child seat belt path.

LATCH Installation

- Figure A illustrates a typical forward-facing LATCH installation.
- Verify that your vehicle is equipped with LATCH anchors. If LATCH anchors are not available, you must use vehicle belt installation methods.

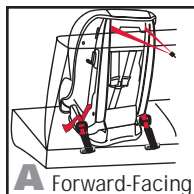
! WARNING! This child seat must not be used forward-facing for children less than one year of age OR weighing less than 20 pounds.

- 1 If stored, remove LATCH connectors from storage slots under cover. See page 30. Pull both connectors completely through the child seat's right-side, rear-facing belt slot (Fig. B) so they are on the outside of the shell.
- 2 Press each LATCH adjuster release button and pull each LATCH adjuster strap to full length.
- 3 Thread the LATCH connectors through forward-facing belt path (Fig. C) to the back of the child seat.

NOTE: It may be necessary to switch LATCH connectors as shown on page 29 if ANY of the following conditions exist:

- LATCH connector is not in an upright position as shown in figure D.
- LATCH strap is twisted.
- A positive click is NOT heard when LATCH connector and LATCH anchor are connected.

NOTE: If a positive click is not heard, but the LATCH connector is in an upright position, you should not switch the LATCH connector. The strap may be too tight or twisted, or there may be debris in the LATCH connector.



- 4 Place the child seat sideways on the vehicle seat, with the back facing you.
 - Child seat may be in upright or recline position. See [Recline Adjustment](#) on page 30.
- 5 Remove the Versa-Tether® from pouch and place up and over the child seat back.
- 6 Verify that the LATCH strap is not twisted and attach the closest LATCH connector to the vehicle seat back to the farthest LATCH anchor (Fig. E).
 - A positive click confirms attachment.
- 7 Rotate the child seat into the forward-facing position.
- 8 Verify that the LATCH strap is not twisted and attach the remaining LATCH connector to the adjacent LATCH anchor (Fig. F).
 - A positive click confirms attachment.
- 9 Push the child seat into the vehicle seat while pulling each LATCH adjuster strap tight (Fig. G).
- 10 Attach the Versa-Tether® hook to an approved tether anchor. Remove all slack from the tether to secure. Store excess webbing in the tether pouch. See pages 25 – 28.
- 11 Verify all connections are secure and that the child seat is secure.
 - The child seat is secure when it cannot be moved front-to-back or side-to-side more than 1 inch (2.5 cm.) at the belt path.



Removal

- Disconnect the Versa-Tether® from the tether anchor.
- Release each LATCH harness from the LATCH anchor by pressing the red release button on the LATCH connector.
- When not in use, always store the LATCH connectors in storage slots. See page 30.

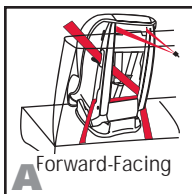
Lap-Shoulder Belt Installation

- Figure A illustrates a typical forward-facing lap-shoulder belt installation.
- When not in use, always store LATCH connectors in storage slots. See page 30.

WARNING! This child seat must not be used forward-facing for children less than one year of age OR weighing less than 20 pounds.

IMPORTANT: Britax recommends that the Versa-Tether® be used at all times. Using the tether will improve the stability of the child seat and reduce the risk of injury. Check your vehicle owner's manual for approved tether anchor locations.

- 1 Place the child seat forward-facing on the vehicle seat.
 - Child seat may be in upright or recline position. See [Recline Adjustment](#) on page 30.
- 2 If the vehicle is equipped with an approved tether anchor for the chosen seating position, remove the Versa-Tether® from the pouch and place it up and over the child seat back.
- 3 Pull the vehicle belt out and thread it through the forward-facing belt path (Fig. B).
- 4 Verify that the vehicle belt is not twisted and buckle (Fig. C).
- 5 Rotate lever downward to open the forward-facing lock-off farthest from where the vehicle belt is buckled.
- 6 Remove slack from the lap portion of the vehicle belt.



- 7 Push the child seat firmly into the vehicle seat while pulling the shoulder portion of the vehicle belt tightly through the lock-off (Fig. D).
- 8 Hold the shoulder belt tight and rotate the lock-off upward until secured (Fig. E).
 - If your vehicle is equipped with an automatic locking retractor (ALR), use of the lock-offs is not required as long as the ALR is locked. Check your vehicle owner's manual to determine what type of retractor your vehicle has, and how to lock the retractor.



- 9 If the vehicle is equipped with an approved tether anchor, attach the Versa-Tether® hook to an approved tether anchor. Remove all slack from the tether to secure. Store excess webbing in the tether pouch. See pages 25 – 28.
- 10 Verify that the vehicle belt is tight and that the child seat is secure.
 - The child seat is secure when it cannot be moved front-to-back or side-to-side more than 1 inch (2.5 cm.) at the belt path.

Removal

- If connected, disconnect the Versa-Tether® from the tether anchor.
- Press the red release button on the vehicle belt buckle and pull the vehicle buckle from the child seat belt path.

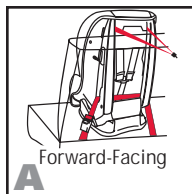
Lap-Belt Installation

- Figure A illustrates a typical forward-facing, lap-belt installation.
- When not in use, always store the LATCH connectors in storage slots. See page 30.

WARNING! This child seat must not be used forward-facing for children less than one year of age OR weighing less than 20 pounds.

IMPORTANT: Britax recommends that the Versa-Tether® be used at all times. Using the tether will improve the stability of the child seat and reduce the risk of injury. Check your vehicle owner's manual for approved tether anchor locations.

- 1 Place the child seat forward-facing on the vehicle seat.
 - Child seat may be in upright or recline position. See [Recline Adjustment](#) on page 30.
- 2 If the vehicle is equipped with an approved tether anchor for the chosen seating position, remove the Versa-Tether® from the pouch and place it up and over the child seat back.
- 3 Pull the vehicle belt out and thread it through the forward-facing belt path (Fig. B).
- 4 Verify that the vehicle belt is not twisted and buckle (Fig. C).
- 5 Push the child seat firmly into vehicle seat while tightening the vehicle belt.



- 6 If the vehicle is equipped with an approved tether anchor, attach the Versa-Tether® hook to an approved tether anchor. Remove all slack from tether to secure. Store excess webbing in the tether pouch. See pages 25 – 28.
- 7 Verify that the vehicle belt is tight, locked, and child seat is secure.
 - The child seat is secure when it cannot be moved front-to-back or side-to-side more than 1 inch (2.5 cm.) at the belt path.

Removal

- If connected, disconnect the Versa-Tether® from the tether anchor.
- Press the red release button on the vehicle belt buckle and pull the vehicle buckle from the child seat belt path.

Aircraft Installation



Certified for
Aircraft Travel

This child seat is certified for aircraft use. Most airlines in the U.S. and Canada will allow use of a child seat as long as it is labeled as an approved child seat for airline use and fits properly on plane. Contact the airline about their policy prior to traveling.

The FAA recommends that a child weighing up to 40 pounds use a certified, harnessed child seat while traveling on an aircraft. Install your child seat in a window seat to avoid blocking the aisle.

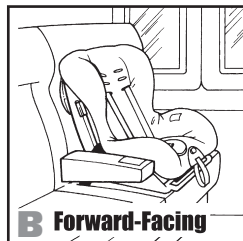
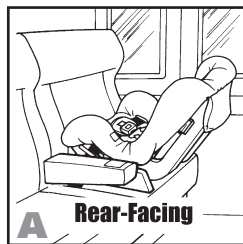
If the aircraft lap belt is too short, ask the flight attendant for a belt extender.

Rear-Facing Installation

For rear-facing aircraft installation (Fig. A), follow Rear-Facing Lap-Belt Installation instructions on pages 16 – 17.

Forward-Facing Installation

For forward-facing aircraft installation (Fig. B), follow Forward-Facing Lap-Belt Installation instructions on pages 22 – 23.



Safety Information



WARNING! When using the child seat in forward-facing mode, attach the Versa-Tether® only to tether anchors identified by the vehicle manufacturer as tether anchorage points. Use of other locations is not approved or permitted. **DO NOT** modify the vehicle without advice from the vehicle manufacturer if a tether anchorage is not available. **DO NOT** hook the Versa-Tether® to the bottom of a vehicle seat adjuster!

IMPORTANT:

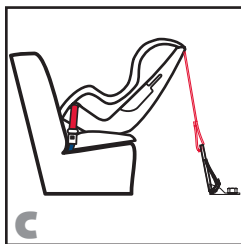
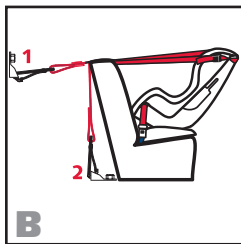
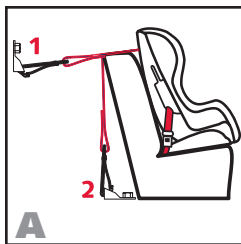
- Britax recommends that the tether be used at all times. Using the tether will improve the stability of the child seat and reduce the risk of injury.
- If your vehicle does not currently have a tether anchor attachment, refer to your vehicle owner's manual or contact the vehicle manufacturer for assistance.
- The back angle of the child seat should not exceed 45° from vertical when properly installed in rear-facing position.

Using the Versa-Tether®

- 1 Consult your vehicle owner's manual for approved tether-anchorage locations.
- 2 Locate the tether on the rear of the child seat and remove the tether components from the pouch. Place the tether up and over the child seat back.
- 3 Install the child seat using the LATCH system or the vehicle belts based on the instructions in this manual.
- 4 Lift the tether release tab; then pull to fully extend the tether strap into a "V" shape.
- 5 Locate the hook on the strap and loosely attach the tether to an anchor point.
 - See figure A for forward-facing installation.
 - See figures B and C for rear-facing installations.
- 6 Secure the child seat by a seat-belt OR with the LATCH connectors.
- 7 Pull the tether adjuster strap to remove all slack.
- 8 Verify there is tension in the tether strap and that the child seat is properly secured.
 - The child seat is secure when it cannot be moved front-to-back or side-to-side more than 1 inch (2.5 cm.) at the belt path.

NOTE:

- The rear-facing recline angle of the child seat should be 30°– 45° from vertical (not to exceed 45°) when car is parked on a level surface (Figs. B and C).
- The rear-facing recline angle can be adjusted by placing a rolled towel or pool noodle in the crease of the vehicle seat.

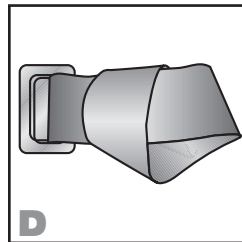


Tether Connector Strap



WARNING! Only use the tether connector strap for rear-facing tether installation.

Because every vehicle model is different, sometimes you cannot find a location to properly anchor the tether or the structural part of the seat is too large for the hook. Use the tether connector strap to assist in creating an anchor point (Fig. D).



- 1 Find a fixed vehicle seat belt anchor or vehicle seat leg (that is bolted to the floor) to which the strap can be wrapped around.
- 2 If you cannot find an acceptable location to create an anchor point, contact the vehicle manufacturer to identify a suitable tether connection point.
- 3 Loop the strap around the metal anchor.
- 4 Take the metal D-ring and thread it through the webbing loop on the other end of the strap.
- 5 Pull the metal D-ring all the way through until the strap is tight around the metal anchor.
- 6 Use the D-ring as an attachment point for hook on tether strap.

Energy-Absorbing Tether

WARNING! The Energy Absorbing Tether has been designed to help indicate when this child seat has been involved in a moderate or severe crash and replacement of the child seat is necessary.

Figure A shows the tether when the child seat is acceptable for continued use (provided the child seat has not been involved in a crash). The colored stitching will be intact and the webbing will be looped inside the shell.

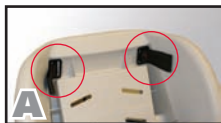


Figure B shows the tether when the child seat is unacceptable for continued use. If one or both of the loops have pulled through the back side of the shell and/or any of the colored stitching has ripped on either side, the child seat is no longer acceptable for use. Discontinue use of the child seat.



IMPORTANT: Regardless of whether loops have pulled through the back side of the shell and the colored stitching has been ripped, discontinue use of the child seat if it has been involved in a moderate or severe crash.

Switching the LATCH Connectors

The LATCH strap may need to be switched for proper alignment in rear-facing (Fig. C) versus forward-facing (Fig. D) installations. If a proper connection cannot be achieved, complete the following procedure to switch the connectors.

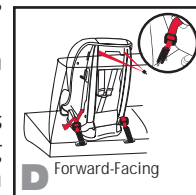
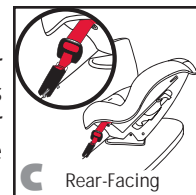
- 1 Lift the front of the child seat cover to access the LATCH connectors.
- 2 Pull the LATCH strap and connectors from the child's right side of the child seat.
- 3 Thread the LATCH strap and connectors through the appropriate belt path ensuring that the larger part of the connector is on top for the installation procedure you wish to use (Fig. E).

- Verify that the harness is not twisted.

IMPORTANT: When installing this child seat in rear-facing mode, the LATCH strap must rest behind the child seat buckle.

NOTE: To ensure LATCH connector is properly aligned with vehicle's LATCH anchor, the connector's red release button should face away from vehicle seat back, and the larger of the two connector sections is on top (Fig. E).

- 4 Replace cover and continue with LATCH installation procedure.



Storing the LATCH Connectors

When the LATCH connectors are not in use, lift the child seat cover to access LATCH storage slots (Fig. A). Fold each end of the LATCH strap and slide each LATCH connector into the adjacent slots.

NOTE: Child seats are shipped from Britax with LATCH connectors in the storage slots.

Recline Adjustment

Pull the recline handle then slide the child seat shell into the desired position. (Fig. B) Release the recline handle and verify the child seat has locked into position.

NOTE: It will be necessary to loosen the tether, vehicle seat belt, and/or LATCH strap before adjusting the recline position. The tether, vehicle seat belt, and/or LATCH strap must be properly re-tightened after adjusting the recline position.

Chest Clip

Fastening the Chest Clip

Fasten the chest clip by pushing the two halves together until a positive click is heard (Fig. C).

Releasing the Chest Clip

Squeeze the middle tab together and pull apart the two pieces (Fig. D).

Adjusting the Chest Clip

Slide chest clip up or down on harness so it is positioned at the middle of the child's chest, level with the child's armpits.



Harness Buckle

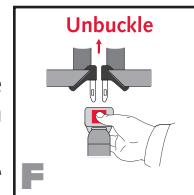
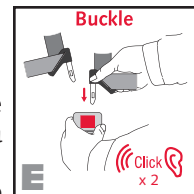
Fastening the Harness Buckle

Hold the harness buckle with one hand. Use the other hand to insert one buckle tongue at a time into the harness buckle (Fig. E). Proper connection is confirmed with a positive click after inserting each buckle tongue.

Releasing the Harness Buckle

Brace the rear of the harness buckle with one hand. Press the release button and slide both tongues to remove from the buckle (Fig. F).

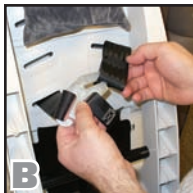
IMPORTANT: Periodically clean the harness buckle to ensure safe operation. See page 37.



How to Adjust Harness Slot Height

IMPORTANT: See *Important Harness Adjustments* on pages 6 – 7 for important instructions on proper harness fit based on your child's height and weight.

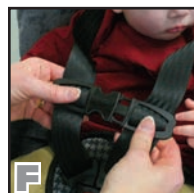
- 1 Loosen the harness by pressing the harness-adjuster button while pulling the shoulder straps forward as far as possible (Fig. A).
- 2 From the rear of the child seat, unhook the shoulder harness from the harness yoke (Fig. B).
- 3 Pull straps through the shell, foam, and cover to the front of the child seat.
- 4 Thread the harness straps through the appropriate harness slots in the cover, foam, and child seat shell (Fig. C).
- 5 Reattach harness straps to the harness yoke (Fig. B).
- 6 Pull harness-adjuster strap to tighten the harness.
- 7 Verify all straps are threaded at the same height and are not twisted.



Securing Your Child

- 1 Once the child seat has been installed in the vehicle and adjustments have been made, follow these instructions to secure the child.
- 2 Loosen the harness by pressing the adjuster button located on the front of the child seat, then pull the shoulder straps forward (Fig. A).
- 3 Release the chest clip by squeezing the tabs and sliding pieces apart (Fig. D).
- 4 Unfasten the harness buckle by pressing the release button and sliding the tongues out.

- 5 Move the harness straps to the side of the child seat. Use the harness holder located on the straps and side of the cover to aid in holding the straps.
- 6 Place child in the child seat.
- 7 Position the harness straps around the child and fasten the harness buckle (Fig. E) and chest clip (Fig. F).
- 8 Proper connection of the harness buckle is confirmed with a positive click after inserting each buckle tongue.
- 9 Gently pull up on the harness straps to tighten the lap section of the harness, which should fit low on the child's body.
- 10 Slowly pull the adjuster strap to tighten the harness around the child (Fig. G).
- 11 Position the chest clip at the middle of the child's chest, level with the armpits (Fig. H).
- 12 Verify that harness is not twisted and child is properly secured.



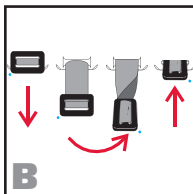
IMPORTANT:

- Always pull on the harness after securing the child to ensure the buckle tongues are secure in the harness buckle. If the buckle will not fasten with a positive click after insertion of each buckle tongue, the harness buckle or adjuster area may be clogged with food, drink or other debris that need to be removed. See page 37 for cleaning instructions.
- Adjust the belts provided with this child seat so they fit snugly around your child. A snug strap should not allow any slack. It lies in a relatively straight line without sagging. It does not press on the child's flesh or push the child's body into an unnatural position.

Child Seat Cover Removal

WARNING! Do not take apart or attempt to take apart the harness. Never remove the buckle tongues from the harness. They cannot be reattached after removal. If assembled incorrectly, the child seat may not perform as intended.

- 1 Loosen the harness by pressing the harness adjuster button while pulling the shoulder straps forward as far as possible.
 - 2 Unhook the shoulder straps from the harness yoke on rear of child seat (Fig. A).
 - 3 Pull the upper harness straps through the shell and cover to the front of child seat.
 - 4 Gently remove the upper portion of the cover. Be careful not to damage the energy-absorbing foam.
 - 5 Remove the buckle and belly pad by turning the metal buckle strap retainer of the buckle on the underside of the child seat so the short side will slide through the child seat shell (Fig. B).
 - 6 Push the retainer through the slots in the shell and cover to the top of the child seat.
 - 7 Pull the lower harness straps, buckle tongues, and chest clip through lower slots in cover.
 - 8 Remove the entire cover from child seat.
- For additional demonstration please visit www.BritaxUSA.com.



Refitting the Cover

To refit the cover, reverse the previous directions. Make sure the shoulder straps are properly threaded through the chest clips and the harness is not twisted.

Cleaning the Cover

- HAND WASH using cold water and mild soap.
- LINE or LIE-FLAT DRY to prevent cover from shrinking.
- **DO NOT** bleach, machine wash, machine dry or iron.

Cleaning the Shell

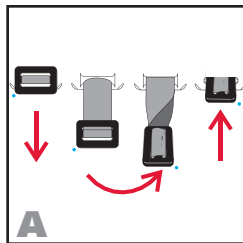
- SPONGE CLEAN using warm water and mild soap.
- TOWEL DRY
- **DO NOT** use solvents, abrasive cleaners or disassemble the harness.

Cleaning the Harness

- SPONGE CLEAN using warm water and mild soap.
- TOWEL DRY
- **DO NOT** bleach, machine wash, machine dry or disassemble the harness.

Harness Buckle Removal

- 1 Fully recline the child seat.
- 2 Locate the metal buckle strap retainer on the bottom of the child seat.
- 3 Pull the retainer away from child seat to loosen.
- 4 Turn the retainer so the short side will go through the slot in child seat shell (Fig. A).
- 5 Push the retainer through slots in the shell and cover to the top of the child seat.



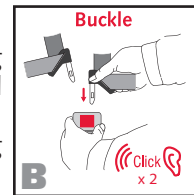
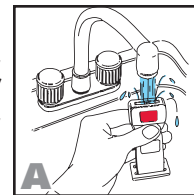
Re-threading the Harness Buckle

- 1 Locate slot in cover and shell for harness buckle.
- 2 Turn the buckle retainer so the short side will go through the slot in the cover and child seat shell Fig. A.
- 3 Push the retainer through slots in the shell and cover, to the bottom of the child seat.
- 4 Pull harness buckle away from child seat until tight and verify the strap is not twisted and the release button is facing outward.

Cleaning the Harness Buckle

If a child eats and drinks while in the child seat, the harness buckle may need to be periodically checked and cleaned of any accumulated food, drink, or other debris or dried liquids.

- REMOVE BUCKLE as described on page 36.
- THOROUGHLY RINSE using warm water (Fig. A).
- TEST THE HARNESS BUCKLE by fastening and unfastening until a positive click is heard after inserting each buckle tongue (Fig. B). If either click is not heard, repeat cleaning procedure.
- TOWEL DRY
- **DO NOT** lubricate, use solvents, abrasive cleaners, soap or other household detergents.



This child seat was manufactured by Britax Child Safety, Inc. Britax® warrants this product to the original retail purchaser as follows:

LIMITED ONE-YEAR WARRANTY

This product is warranted against defective materials or workmanship for one year from the date of original purchase. Proof of purchase is required. The exclusive remedy for this warranty is that Britax will, at its option, provide repair or replacement components for this product or refund the original purchase price of the product. Britax reserves the right to discontinue or change fabrics, parts, models or products, or to make substitutions.

To make a claim under this warranty, contact Britax Consumer Services at 1-888-427-4829 or write to us using the address on the back cover of this booklet. Proof of purchase is required.

PLEASE COMPLETE AND MAIL THE OWNER REGISTRATION CARD WITHIN (30) DAYS OF PURCHASE OR VISIT WWW.BRITAXUSA.COM/REGISTRATION.

WARRANTY LIMITATIONS

This warranty does not include damages which arise from negligence, misuse or use not in accordance with the product instruction.

The use of non-Britax Child Safety, Inc. covers, inserts, toys, accessories, or tightening devices is not approved by Britax. Their use could cause this child seat to fail Federal Safety Standards or not perform as intended in a crash. Their use automatically voids the Britax warranty.

LIMITATION OF DAMAGES

The warranty and remedies as set forth above are exclusive and in lieu of all others, oral or written, express or implied. In no event will Britax, or the retailer selling this product, be liable for any damages, including incidental or consequential damages, arising out of the use or inability to use this product.

LIMITATIONS OF WARRANTIES AND OTHER WARRANTY TERMS AND STATE LAWS

Any implied warranties, including implied warranties of merchantability and fitness for a particular purpose, shall be limited to the duration and terms of the express written warranty. Some states do not allow limitations on how long an implied warranty lasts or the exclusion or limitation of incidental or consequential damages, so the above limitations may not apply. This warranty gives you specific legal rights, and you may have other rights, which vary from state to state. Neither Britax, nor the retailer selling this product, authorizes any person to create for it any other warranty, obligation, or liability in connection with this product.

IMPORTANT:

- ☑ **DOUBLE CHECK EVERY TIME YOU USE THIS CAR SEAT.**

Double Check Car Seat-to-Vehicle Installation:

- ☑ Check that the LATCH or vehicle seat belts connections to the vehicle are tight and locked.
- ☑ Verify the car seat cannot be moved front-to-back or side-to-side more than one inch at the belt path.

Double Check Child-to-Car Seat Installation:

- ☑ Tug on the buckle to ensure proper locking.
- ☑ Confirm harness straps are snug and over both shoulders and hips. You should not be able to pinch excess harness strap webbing at the child's shoulder.
- ☑ Make sure the chest clip is properly fastened and positioned in the middle of the child's chest at armpit level.

MADE IN



U. S. A.
WITH GLOBAL COMPONENTS

Britax Child Safety, Inc.
13501 South Ridge Drive
Charlotte, NC 28273
USA

A Britax Childcare Group Limited
company

Tel 1.888.427.4829

Britax USA.com

Free Manuals Download Website

<http://myh66.com>

<http://usermanuals.us>

<http://www.somanuals.com>

<http://www.4manuals.cc>

<http://www.manual-lib.com>

<http://www.404manual.com>

<http://www.luxmanual.com>

<http://aubethermostatmanual.com>

Golf course search by state

<http://golfingnear.com>

Email search by domain

<http://emailbydomain.com>

Auto manuals search

<http://auto.somanuals.com>

TV manuals search

<http://tv.somanuals.com>