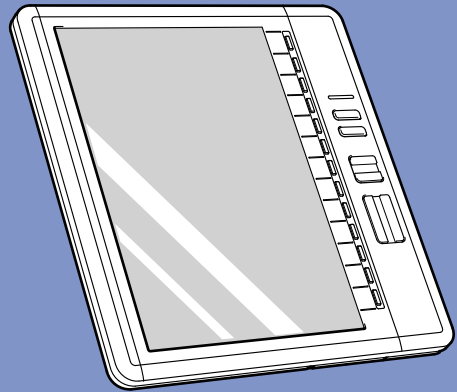


brother

SV-Manager

User's Guide (PC Software)

BROTHER DOCUMENT VIEWER
SV-100B



Starting and Closing

Connection and Memory
Card Management

Security Settings

Contents and
Folder Operations

Troubleshooting

Appendix

When in Trouble

Malfunction? Follow the following procedures to determine the cause of problems with this product.

Refer to "Troubleshooting" **page 60**

Easily find what you're looking for!
Turn to page 4 for the Quick Index

- Read this document carefully before using the product.
- Store this document in a safe and readily accessible location after reading.

Introduction

Thank you for purchasing the **BROTHER DOCUMENT VIEWER SV-100B**.

The **SV-Manager** is a Windows application that manages the contents of the **SV-100B** (herein referred to as the "unit"). (Compatible OS: Windows XP Home/Professional 32bit SP2-SP3 English and Spanish Edition, Vista Home Premium/Home Basic/Business/Ultimate 32bit SP1 English and Spanish Edition)

Read this document carefully before using this device to ensure proper operation. Store this document in a safe and accessible location after reading.

The explanations in this document assume the user can install and execute the general operations of Windows application software.

Refer to commercially available publications for the general operation of Windows.

- The contents of this document may change without prior notice.
- The contents of this document, in part or in whole, may not be duplicated or reprinted without prior consent.
- Although this document has been checked for accuracy, contact us if there are any questionable points or errors.
- This company cannot and will not be liable for any financial loss or damage (data loss, loss of income, loss of profit, loss due to business interruption, etc.) arising from the faulty, malfunctioning, or defective operation of the unit, and/or other external factors.

Trademarks

The names of the operating systems have been abbreviated in this document.



The official name of Windows® XP is Microsoft® Windows® XP operating system.

The official name of Windows® Vista is Microsoft® Windows Vista® operating system.

- Microsoft®, Windows®, Excel, Word, Power Point®, and Windows Mobile™ are registered trademarks of the Microsoft Corporation in the US and other countries.
- Acrobat® and Adobe are registered trademarks or trademarks of Adobe Systems Incorporated in the US.
- microSD™ is a trademark of SD Association.
- Any other company, product, or service name listed in this document is the registered trademark or trademark of the respective company.

Operating Manual Notations

■ Bookmark

< >	Indicates the key name.
" "	Indicates the item displayed in the screen display panel.
[]	Indicates the selection item.
	<p>In the case of successive operations, items are listed as "[Edit] → [Bookmark] → [Delete bookmark]".</p> <ol style="list-style-type: none">1 Click [Edit] from the menu.2 Point and click [Bookmark].3 Click [Delete bookmark]. <ul style="list-style-type: none">• The [(selected item name)] is noted without the point or click operation in the abbreviated notation, as in the above, to indicate that the point operation has the same effect as the click operation, when the cursor is placed on the target item. However, the click and point operations are clearly noted when their respective effects differ.
[]	Indicates a screen or dialog name.
 Memo	Indicates useful and convenient information and restrictions.
 Caution	Indicates operations that may delete user data or important points.

■ Notation

- "Click" refers to left click.
- "Right click" refers to right click.

Quick Index

SV-Manager is a Windows application software that manages the contents of the unit.

The SV-Manager converts the source file, i.e. Word, Excel, PDF, etc., into a format that can be browsed by the unit and creates a file specific to this unit. The unit-specific files created by this application are registered and managed by this unit and in the SV-Manager library (specified folder in the computer's hard drive).

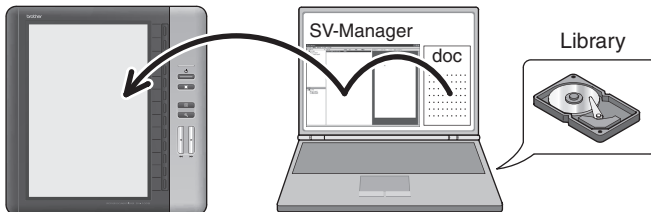
The following explains the main functions of the SV-Manager using simple illustrations. Refer to the corresponding pages.



The unit-specific files can only be managed by SV-Manager.

■ Create a unit-specific file directly to the unit

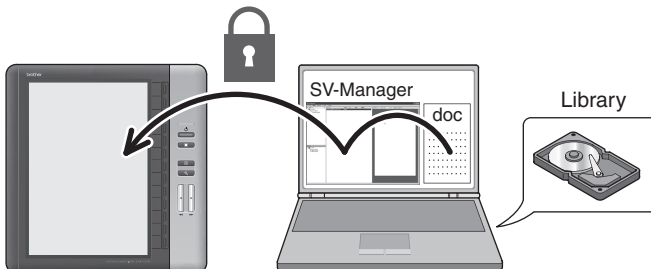
Create a unit-specific file directly on the unit by either printing from an application software or by dragging and dropping the source file.



➔ "Creating Unit-Specific Files" on page 31

■ Increased security management

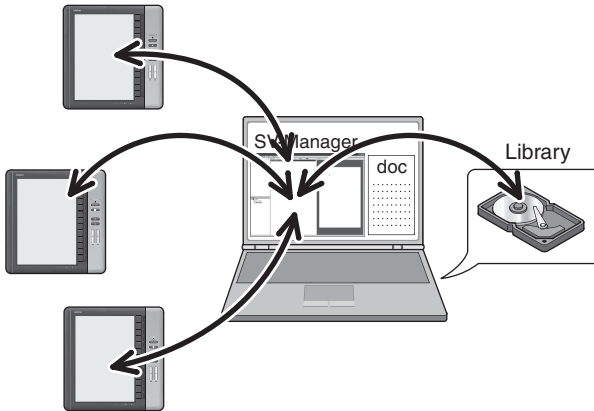
Unit-specific files can be encrypted with a password by using a security folder.



➔ "Unit Security Setting" on page 26

■ Backup or replace unit-specific files

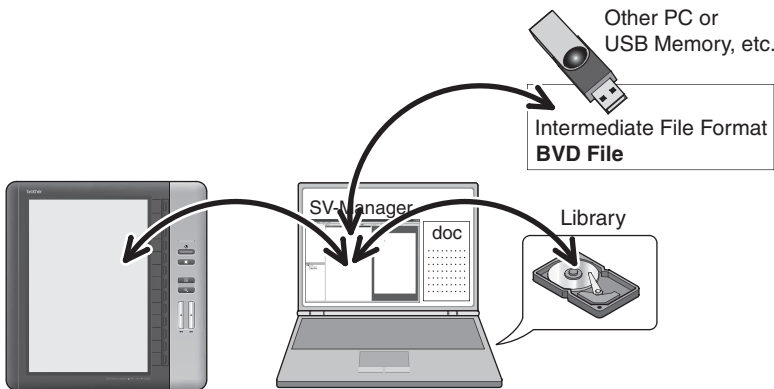
You can backup and withdraw the unit-specific file when needed by registering the file into the SV-Manager library. This feature is convenient when using multiple units.



➔ "Managing Folders/Files" on page 49

■ Move unit-specific files to other computers

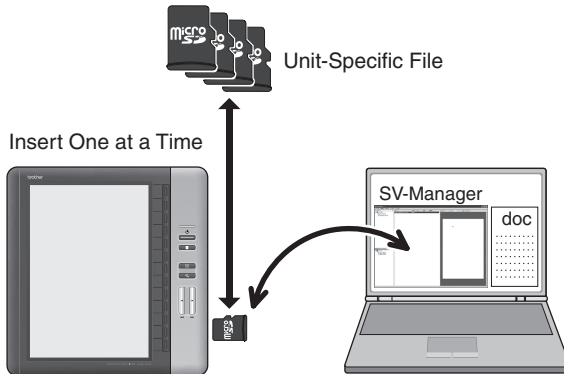
Although unit-specific files can be managed using the SV-Manager alone, the files can be moved to other computers, i.e. backup, etc. Use the BVD Export function to export files into file formats that can be copied and moved using the Windows file operation. Exported files can be imported to SV-Manager using BVD Import.



➔ "Manage Unit-Specific Files in an Intermediate File Format" on page 57

■ Large Quantity of Mobile Content

By saving unit-specific files to multiple microSD memory cards (herein referred to as memory cards), a large amount of content becomes portable.



➔ "Managing multiple units in the memory card" on page 24



Memo

The maximum memory card capacity for this unit is 2GB. microSDHC memory cards are not compatible with this unit.



Caution

**Do not forcefully remove the memory card while reading or writing data.
Data can be destroyed.**

Table of Contents

Introduction	2
Trademarks.....	2
Operating Manual Notations	3
Quick Index.....	4
Table of Contents.....	7
1 Starting and Closing SV-Manager	10
Starting/Closing the SV-Manager	11
Starting the SV-Manager	11
Closing the SV-Manager.....	11
SV-Manager Screen Configuration.....	12
Hierarchical Display Area.....	13
File Detail Display Area	15
Preview Display Area.....	18
2 Connecting the Unit to the PC and Memory Card Management.....	20
Connecting/disconnecting the unit with the PC	21
Connecting the Unit to the PC	21
Disconnecting the Unit from the PC.....	22
Initializing the Memory Card	23
Confirming the Remaining Space of Memory Card Capacity ...	25
3 Unit Security Setting	26
Setting a Password to the Security Folder	27
Opening/Closing the Security Folder.....	28
Opening the Security Folder	28
Changing the Password to the Security Folder	29

4 Contents and Folder Operations	30
Creating Unit-Specific Files	31
Create from the print image of the application software.....	32
Creating by Drag and Drop	34
Creating from the SV-Manager [Register data] screen.....	37
Changing the Print Settings of the Printer Driver	39
Displaying Contents/Rotating the Page.....	45
Displaying and Confirming the Page	45
Deleting a Page	47
Rotate the page 180 degrees and save	47
Changing the Orientation of the Magnified Display Page	48
Managing Folders/Files	49
Creating Folders.....	49
Changing File/Folder Names.....	49
Moving Files/Folders	50
Copying Files/Folders.....	51
Deleting Files/Folders.....	53
Managing Bookmarks.....	54
Placing Bookmarks.....	54
Deleting Bookmarks	54
Using Bookmarks.....	55
Managing Rating Information	56
Changing Rating Information.....	56
Manage Unit-Specific Files in an Intermediate File Format	57
Writing Data in an Intermediate File Format.....	57
Reading Intermediate File Format Data	58

- 5 Troubleshooting 60**
 - Changing the Operating Environment of the SV-Manager 61**
 - General Settings..... 61
 - Message Settings..... 62
 - Library Settings..... 63
 - Password Invalid State..... 64**
 - Recovering Damaged Files 66**
 - Upgrading the SV-Manager 67**
 - Confirming the Version Information of the SV-Manager 67
 - Confirming the Version Information of the Printer Driver 68
 - Upgrading 68
 - Uninstalling the SV-Manager 69**
 - When this Message Appears 70**
 - Troubleshooting..... 73**

- 6 Appendix 76**
 - Glossary..... 77**
 - Index..... 80**

Starting and Closing SV-Manager

Refer to the Quickstart Guide regarding the operating environment and installation of the SV-Manager.

Starting/Closing the SV-Manager	11
Starting the SV-Manager	11
Closing the SV-Manager	11
SV-Manager Screen Configuration	12
Changing the size of the various areas	12
Screen Display Format	13
Hierarchical Display Area	13
Differences in the screen display according to the connection status of this unit.....	15
File Detail Display Area	15
Changing the Item Display Width	16
Changing the Item Order	17
Hiding Items.....	17
Preview Display Area	18

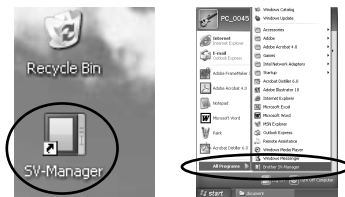


Starting/Closing the SV-Manager

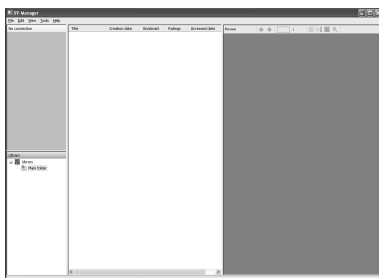
Starting the SV-Manager

1 Double click the SV-Manager shortcut icon.

- The application can also be started from [All Programs] → [Brother SV-Manager] from the Windows Start Menu.



- ➔ The SV-Manager starts.



Closing the SV-Manager

1 Click the on title bar.

- The application can also be closed from [File] → [Exit] in the menu.

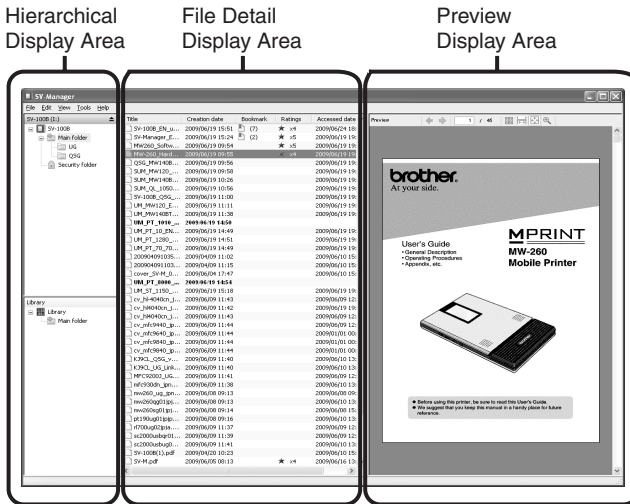
- ➔ The SV-Manager and the [SV-Manager] screen close.



SV-Manager Screen Configuration

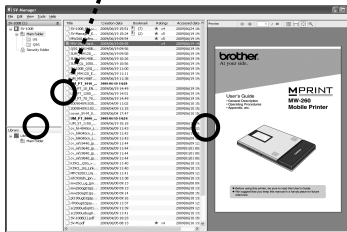
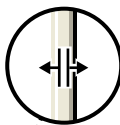
The [SV-Manager] screen is divided into 3 areas.

Hierarchical Display Area	<ul style="list-style-type: none"> Displays the hierarchy of the folder configuration.
File Detail Display Area	<ul style="list-style-type: none"> The File Detail Display Area displays the unit-specific files in the selected folder in a list. Subfolders are not displayed.
Preview Display Area	<ul style="list-style-type: none"> The Preview Display Area displays the contents of the selected unit-specific file.



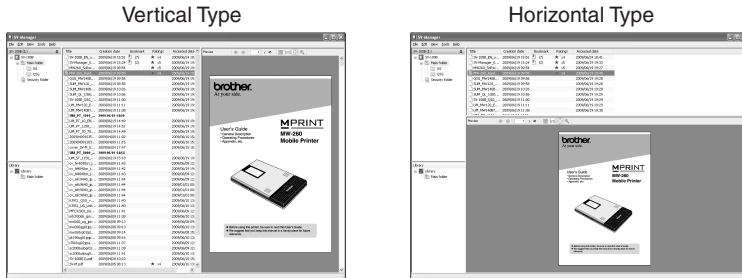
Changing the size of the various areas

1 Move the mouse to the outer edges of the area and drag when the changes into



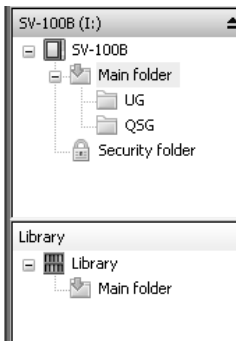
Screen Display Format

The screen display can be configured to either vertical or horizontal view. Refer to "Changing the Operating Environment of the SV-Manager" on page 61 to change the display method.



1 Hierarchical Display Area

Displays the folders in the unit and library in a hierarchical display. The unit is displayed above and the library is displayed in below. The selected unit or library is displayed with a dark gray title bar.



 : **Unit top folder**

- This is the top folder of the memory card configured by default.

 : **Main folder**

- This is a general folder configured by default. This folder cannot be encrypted.


 : **Security folder (When open )**

- This is a special folder created by default. The unit-specific file can be encrypted and stored with a password. Only one folder can be created for each unit.

 : **Folder**

- This is a folder that can be created by the user.



Although folders in the top, main, and security folders are displayed by the same icon in the SV-Manager, folders within the security folder are indicated by the  icon with the security mark when browsing within the unit.

 : **Library**

- This is a folder created on the PC when the SV-Manager is installed. The security folder cannot be created within the library.
- Refer to "Changing the Operating Environment of the SV-Manager" on page 61 to change the folder destination on the PC.

 : **Remove**

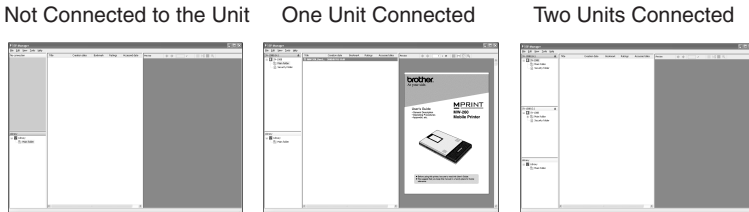
- Click when removing the unit. This function is similar to the "Safely Remove Hardware" feature in Windows.



The names of the unit's top folder "SV-100B", main folder, security folder, and folder names can be changed from the right-click menu.

Differences in the screen display according to the connection status of this unit

The SV-Manager can manage up to two units simultaneously. When two units are connected, both units display in the Hierarchical Display Area. The first unit connected to the PC displays at the top while the unit connected next displays between the library and the first unit. When three or more units are connected, units connected after the second unit do not display.



File Detail Display Area

Displays a list of unit-specific files. The files display in order within the File Detail Area when read by this unit. Each file displays the five items: [Title], [Creation date], [Bookmark], [Ratings], and [Accessed date]. Click the title line of each item to sort the files by the item's ascending or descending order.

Title	Creation date	Bookmark	Ratings	Accessed date
SV-100B_EN_u...	2009/06/19 15:51	(7)	★ x4	2009/06/24 18:
SV-Manager_E...	2009/06/19 15:24	(2)	★ x5	2009/06/19 19:
MW260_Softw...	2009/06/19 09:54		★ x5	2009/06/19 19:

Title

- Refers to the unit-specific file name.
- Files that have been read by this unit display in a standard font, while unread files display in a bold font.



When a unit-specific file is created from the source file, the unit-specific file name includes the original extension of the source file. The file name can be changed.

Creation date

- Displays the date and time the unit-specific file was created from the source file.

Bookmark

- Displays the number of "bookmarks" placed in the pages by the SV-Manager or unit. This column is left blank when "bookmarks" do not exist.

Ratings



- Displays the number of ★ rated by the SV-Manager or the unit. This column is left blank when a "Ratings" does not exist.

Accessed date

- Displays the most recent date that this unit browsed the unit-specific file.

■ Changing the Item Display Width

The item display width can be changed to any length or made to fit the width of the character string of the longest row.

- 1 Move the mouse to the right edge of each item's title and drag or double click when the  changes into .

Title	Creation date	Bo
MW-260_Hard...	2009/03/02 15:28	
MW260_Softw...	2009/03/02 15:46	
SV-100B_ug_jp...	2009/03/02 17:28	
SV-Manager_u...	2009/03/02 17:00	
UM_PT_1010_1...	2009/03/02 17:32	

- ➔ Drag the edge of the item to change the width to any length.
- ➔ Double click to automatically change the item width to fit the characters of the longest row in the file list.

Title	Creation date	
MW260_Software.pdf	2009/03/02 15:46	
MW-260_Hardware.pdf	2009/03/02 15:28	
SV-Manager_ug_Eng.pdf	2009/03/02 17:00	



Memo

- If there are any undisplayed items, drag or double click the edge to display the undisplayed items.
- Double click to change the item to a minimum width if the entire item column is empty for all the files in the list.
- The changes are saved even if the SV-Manager is closed.

■ Changing the Item Order

The item order can be changed.

1 Move the title of the item by dragging and dropping the title to the target location.

➔ The item order is changed.



The item order is not saved when closing the SV-Manager.

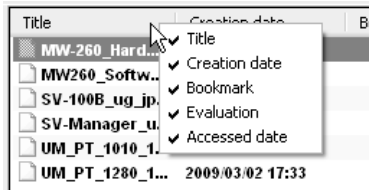
■ Hiding Items

Displayed items can be hidden.

1 Right click the title line.

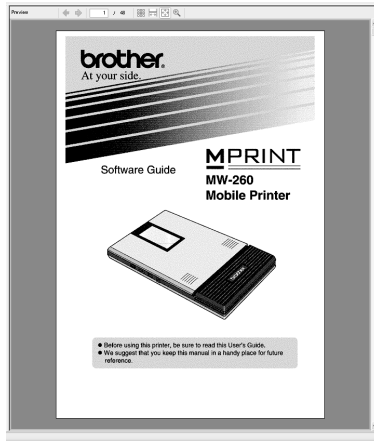
2 Click the display items and remove the checkmark "✓".

- Right click the title again and replace the checkmark "✓" to display the item or double click or drag the edge of the undisplayed item.



Preview Display Area

Displays contents page preview of the unit-specific files.



⏪ : (Previous page)

- Turn to the Previous Page

⏩ : (Next page)

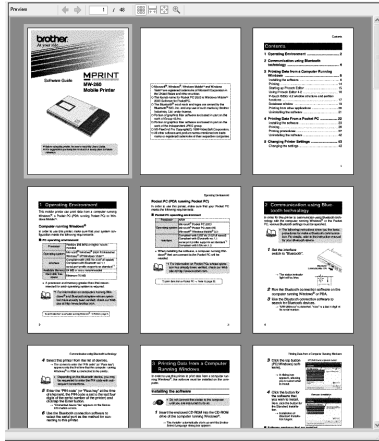
- Turn to the next page.

Current Page Number/Total Page Number

- Displays the displayed (selected page in thumbnail display) page number and the total number of pages.

: (Thumbnail)

- Displays the contents page as thumbnails.
- The selected page is displayed with a blue frame.



: (Fit Width)

- Displays a single content page by fitting the page to the window width in the Preview Display Area.

: (Fit Page)

- Displays an entire content page by fitting the page to the Preview Display Area.

: (Actual size/Enlarge)

- Changes between normal (entire page) and zoom display image.
- A single dot of the image data created in the normal or zoom display image is an actual single dot on the display of the PC. The display status on the unit can be confirmed.
- If the zoom display image is unavailable, the image of the entire page display is magnified and displayed by the unit.

Connecting the Unit to the PC and Memory Card Management

When a memory card is inserted into the unit, SV-Manager recognizes the card as a removable drive, similar to when a memory card is inserted into a general memory card reader/writer.

Unit-specific files can be managed in the SV-Manager when a memory card in the memory card reader/writer is initialized with the SV-Manager. When a card is inserted into the unit, the contents of the card can be browsed on the unit.

Connecting/disconnecting the unit with the PC	21
Connecting the Unit to the PC	21
Disconnecting the Unit from the PC	22
Initializing the Memory Card	23
Initialization	23
Managing multiple units in the memory card	24
Confirming the Remaining Space of Memory Card Capacity	25
Confirming the Used Space of Memory Cards	25
Confirming the Specific Used Space of Memory Cards	25



Connecting/disconnecting the unit with the PC

Connect the unit with the PC using the USB cable (included) to manage the unit-specific files in the unit.

Connecting the Unit to the PC

1 Connect the unit with the PC using the USB cable (included).

- Refer to "SV-100B User's Guide (Main Unit)".

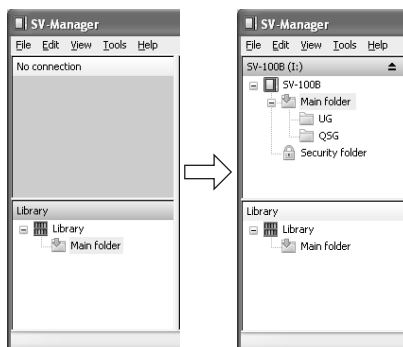


Memo

- Proper operation cannot be guaranteed when connecting via USB hubs. Connect directly to the PC's USB port.
- When using a USB cable other than the one included, use a cable that is shorter than 2m.

➔ "No connection" in the Hierarchical Display Area changes to the top folder name of the unit (default name: "SV-100B").

- If a unit is already connected, the second unit displays between the first unit and the library.



Memo

- The SV-Manager can only manage up to 2 units simultaneously. When three or more units are connected, units connected after the second unit do not display in the Hierarchical Display Area.
- If the memory card of the connected unit has not been initialized by the SV-Manager, the unit is not recognized and the Hierarchical Display Area cannot be refreshed. Refer to "Initializing the Memory Card" on page 23 to initialize the card.
- When the Windows Explorer and automatic refresh screens display simultaneously, close the screens as required.

Disconnecting the Unit from the PC

Follow the following procedures to safely remove the unit from the PC.



Caution

Do not forcefully remove the unit while reading or writing data. Data can be destroyed. Always carry out the removal procedure explained here. Remove the USB cable only after ensuring that the unit is released from SV-Manager management and after confirming that the unit no longer appears in the Hierarchical Display Area.

1 Click (Remove) the Hierarchical Display Area.

- The unit can be disconnected from [Tools] → [Remove] in the Menu.
- ➡ The unit is removed from being managed by SV-Manager and disappears from the Hierarchical Display Area.
- The unit can now be safely disconnected from the PC. This function is similar to the "Safely Remove Hardware" feature in Windows.



Memo

- When three or more units are connected to the unit, the disconnected unit disappears and the unit connected in the number three position displays in the Hierarchical Display Area.
- If a general Windows file is saved on the memory card and the file is being used by another application, the unit cannot be disconnected.



Initializing the Memory Card

Memory cards need to be initialized by the SV-Manager or formatted by the unit to allow the unit to browse and manage unit-specific files. Unit-specific files cannot be registered to uninitialized memory cards.

If the password to the security folder is invalid, the unit may require reinitialization when reaccessing the security folder or when browse becomes unavailable.



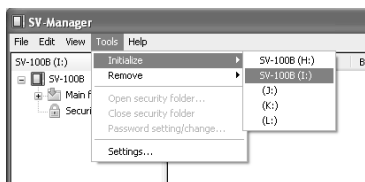
- Backup the unit-specific files on the memory card in the Library or intermediate file format while reinitializing an initialized unit.
- The initialization process of the SV-Manager deletes all the unit-specific files from the memory card and creates new and empty Top, Main, and Security folders in it. This process differs from the format command in the unit or Windows as general Windows folders and files in the card are not deleted.
- If Software that is not compatible with Windows or SD standards is used to format the card, the card may become incompatible with SD standards and compatibility may become an issue. Use the unit to format the memory card. The format process by this unit formats the card with SD compatible standards and creates new Top, Main, and Security folders in the card, similar to the initialization process of the SV-Manager.
- If "Show hidden files and folders" within "Hidden files and folders" is applied in the [View] tab on the [Folder Options] dialog within Explorer, the BRVDOC folder appears in the root directory after initialization. Unit-specific files are saved to the BRVDOC folder in a unique format. Note that opening the folders and files in Windows may render the SV-Manager and unit from being able to browse.

2

Initialization

1 Click [Tools] → [Initialize] in the Menu and click the drive to initialize.

- The top folder name already displays (default name: "SV-100B") on the initialized drive in the SV-Manager.
- When multiple removable drives are connected, confirm the target drive using Explorer when the drive cannot be determined.



➔ The [Initialize] dialog displays.

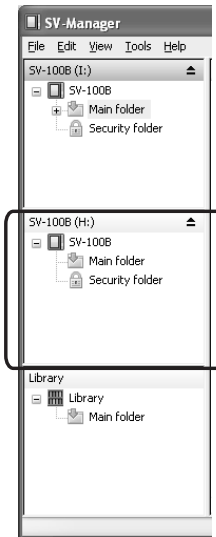
2 Click [Yes].

- Click [No] to cancel.



➔ After the [Initializing...] dialog displays, a new unit appears in the Hierarchical Display Area.

- The main (📁) and security (🔒) folders are created in the top folder (📁).



Managing multiple units in the memory card

When a card is initialized using the SV-Manager, the memory card inserted into the memory card reader/writer can also be managed as a unit. Even if the unit is unavailable, unit-specific files can be stored on the memory card.

The contents of unit-specific files can be stored on multiple memory cards to provide portability to a large quantity of content. Multiple memory cards can be inserted one at a time into a unit to browse their contents.

This unit can use memory cards with a maximum capacity of 2GB. microSDHC memory cards are not compatible with this unit.



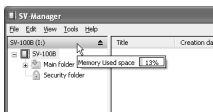
Confirming the Remaining Space of Memory Card Capacity

The used space of memory cards can be confirmed by two methods.

■ Confirming the Used Space of Memory Cards

1 Place the mouse on the title bar of the unit in the Hierarchical Display Area.

- ➡ The used memory space in the memory card displays for several seconds.

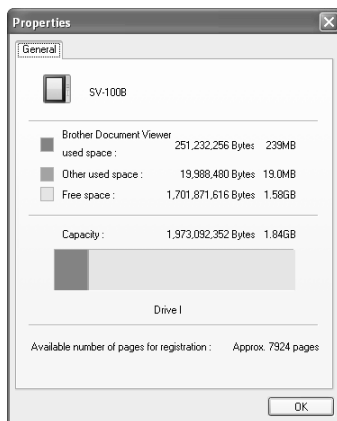


■ Confirming the Specific Used Space of Memory Cards

1 Right click the unit's top folder () and click [Properties].

- This information is also available from [File] → [Properties] in the Menu while the unit's top folder () is selected.

- ➡ The [Properties] dialog displays.



"Available number of pages for registration" in the above dialog is a rough estimate. This number changes according to the registered contents.

2 Confirm the contents and click [OK].

- ➡ The [Properties] dialog closes.

Unit Security Setting

The security folder created during SV-Manager initialization can be used by configuring a password. Unit-specific files are encrypted with a password when they are registered to the security folder. Unit-specific files are not encrypted in the main folder.

Setting a Password to the Security Folder	27
Opening/Closing the Security Folder	28
Opening the Security Folder	28
Closing the Security Folder	28
Changing the Password to the Security Folder	29





Setting a Password to the Security Folder

A password needs to be configured to use the Security folder.

The password configured in this procedure is used by the unit to open the Security folder.

Set the password as follows.


1 Click the security folder () if the password has not been configured.

- The password can also be configured from [Tools] → [Password setting/change] after selecting the top () or main () folder.

➔ The [Password setting] dialog displays.



Memo

- If the [Password setting] dialog does not display when the security folder is clicked, the password has already been configured.
- Select the Security folder () already configured with a password and select [Tools] → [Password setting/change] in the Menu to display the [Password change] dialog. Refer to "Changing the Password to the Security Folder" on page 29.



2 Enter a four digit password in the "Password" field.

- Configure the password using one-byte numeric characters: 0-9. Alphabet characters or symbols cannot be used.



3 Enter the password into the "Confirm password" field.

4 Click [OK].

- The Security folder opens and  changes to .



Opening/Closing the Security Folder

Open the security folder configured with a password as follows.

Opening the Security Folder



1 Double click the closed Security folder ().

- The folder can also be opened from [Tools] → [Open security folder] in the Menu.

➔The [Password authentication] dialog displays.

2 Enter the four digit password as one-byte numeric characters and click [OK].



➔The Security folder opens and  changes to .

- The security folder in the Hierarchical Display Area expands and displays the first level. If a unit-specific file exists on that level, the file displays in the Detail Display Area.



Memo

If password authorization fails three times, the [Password authentication] dialog closes and the password becomes invalid. Refer to "Password Invalid State" on page 64.

Closing the Security Folder

Close the Security folder as follows.

1 Right click the opened Security folder () and click [Close security folder].

- The folder can also be closed from [Tools] → [Close security folder] in the Menu.

➔The Security folder closes and  changes to .

- The File Detail Display and Preview Areas close.



Changing the Password to the Security Folder

The password can be changed even when a unit-specific file is saved to the Security folder.

Change the password as follows.

1 Open the Security folder.

- Refer to "Opening/Closing the Security Folder" on page 28.

2 Right click the security folder () and click [Password setting/change].

- The password can also be changed from [Tools] → [Password setting/change] in the Menu.

➔The [Password change] dialog displays.

3 Enter the current four digit password as one-byte numeric characters.



Changing password.
*Please wait for files in the security folder to be encrypted.

Current password

New Password

Confirm new password

OK Cancel

4 Enter a four digit password in the "New Password" field.

- Configure the password using one-byte numeric characters: 0-9. Alphabet characters or symbols cannot be used.

5 Enter the new password into the "Confirm new password." field.

6 Click [OK].

➔The [Processing password change] dialog displays.

- The unit-specific files in the Security folder are re-encrypted. The change password process is complete when the re-encryption progress display is 100%.
- When there is a large quantity of user-specified files in the Security folder, this may take some time.

Contents and Folder Operations

Creating Unit-Specific Files	31
Registering to the Security folder	32
Create from the print image of the application software	32
When [Registration destination] Dialog Displays	33
Creating by Drag and Drop	34
Dragging and Dropping when SV-Manager is not Started.....	36
Creating from the SV-Manager [Register data] screen	37
Changing the Print Settings of the Printer Driver	39
Configuring the [Print] Dialog of the Application Software.....	42
Configuring from the Windows [Start] Menu.....	43
Adjusting the Settings According to the Content Details	44
Displaying Contents/Rotating the Page	45
Displaying and Confirming the Page	45
Switching the Display Size of the Page	45
Turning the Page	46
Specifying a Page Number to Display	46
Deleting a Page	47
Rotate the page 180 degrees and save	47
Changing the Orientation of the Magnified Display Page	48
Managing Folders/Files	49
Creating Folders	49
Changing File/Folder Names	49
Moving Files/Folders	50
Moving by Drag and Drop.....	50
Moving by Cut and Paste.....	51
Copying Files/Folders	51
Copying by Drag and Drop	51
Copying Using the Menu	52
Deleting Files/Folders	53
Managing Bookmarks	54
Placing Bookmarks	54
Deleting Bookmarks	54
Deleting bookmarks from each page.....	54
Batch Deleting Bookmarks	55
Using Bookmarks	55
Managing Rating Information	56
Changing Rating Information	56
Manage Unit-Specific Files in an Intermediate File Format	57
Writing Data in an Intermediate File Format	57
Reading Intermediate File Format Data	58
BVD Import by Drag and Drop.....	58
BVD Import from the Menu.....	59



Creating Unit-Specific Files

The SV-Manager printer driver converts the content source file, i.e. Word and Excel for Windows, PDF, etc., into data for the unit and creates unit-specific data.

Unit-specific files are created and registered to the security folder by converting and encrypting the file into data for the unit.

Unit-specific files can be created according to the following four operating methods.

1. Create from the print image of the application software

- Unit-specific files for the unit can be created by the same operation as printing from application software, i.e. Word, Excel, etc.
- The registration location is the unit's Main folder. If the unit is not connected, the location is the Main folder of the Library.
- The print settings of the printer driver can be changed when creating unit-specific files.

2. Drag and drop the file into the [SV-Manager] screen

- Select the file or folder from the Windows Desktop or using Explorer and drag and drop into the running [SV-Manager] screen to create a unit-specific file.
- Unit-specific files can be registered to any unit or Library folder.
- Unit-specific files are created according to the print settings of the printer driver.

3. Drag and drop the file into the SV-Manager shortcut icon

- Drag and drop the content source file into the SV-Manager shortcut icon and create a unit-specific file.
- The registration location is the unit's main folder.
- Unit-specific files are created according to the print settings of the printer driver.

4. Create from the SV-Manager [Register data] screen

- Create unit-specific files from the [Register data] screen opened from the SV-Manager Menu.
- Unit-specific files can be registered to any unit or Library folder.
- Unit-specific files are created according to the print settings of the printer driver.



Memo

- The maximum number of pages that can be registered to a single unit-specific file is 9,999 pages. In the case of content source files of over 10,000 pages, specify the number of pages, divide among multiple unit-specific files, and register.
- If a unit-specific file is created twice in a folder as the same content source file, two unit-specific files with the same name will be created. The file is not overwritten.
- The content page of the unit-specific file is displayed as dots or raster data, similar to bitmaps.
- Refer to "Changing the Print Settings of the Printer Driver" on page 39 regarding the print settings of the printer driver.
- If you choose the printing method and the viewed image has either too large or too little print margins, you can adjust the results with the Zoom function located in the SV-100B printer driver.
Refer to "Zoom" on page 40.
- Use Adobe Reader Version 9 or later.

Registering to the Security folder

The security folder needs to be opened to register unit-specific files to the Security folder. The [Password authentication] dialog opens when a closed Security folder is selected. When password authorization is successful, unit-specific files can be registered to the security folder. Refer to "Opening/Closing the Security Folder" on page 28.

Create from the print image of the application software

Create unit-specific files from the print screen of application software, i.e. Word, Excel, Adobe Reader, etc., as follows.

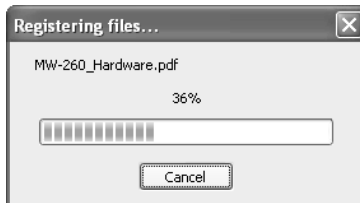
1 Display the [Print] dialog of the application software.

2 Select "Brother SV-100B" from the "Printer" pull-down menu.

- Click [Properties] to change the printer driver settings. Refer to "Changing the Print Settings of the Printer Driver" on page 39.

3 Click [OK].

- ➡ The progress status of the [Registering files...] dialog displays.
- Click [Cancel] to cancel.



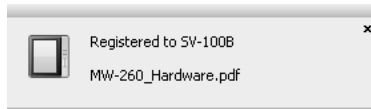
Memo

- Click [Cancel] to stop creating unit-specific files. Only the created pages are registered.
- The [Registration destination] dialog appears when multiple units are connected. Refer to "When [Registration destination] Dialog Displays" on page 33.

- ➡ This message displays when registration is finished.

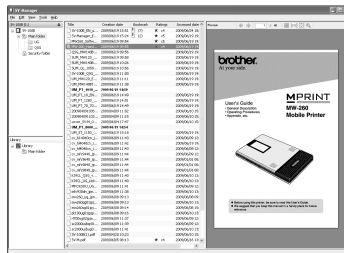
Creating Unit-Specific Files

- The "Registered to SV-100B (top folder name of the unit, if changed)" message displays at the bottom right of the Windows desktop.



Messages at the bottom right of the Windows Desktop can be stopped by "Changing the Operating Environment of the SV-Manager" on page 61.

- ➔ Register unit-specific files to the Main folder.



When [Registration destination] Dialog Displays

The [Registration destination] dialog appears when multiple units are connected.

1 Select the registration location and click [OK].

- If [OK] is not clicked and a certain amount of time passes, the unit-specific file is registered to the unit selected in the [Registration destination] dialog.
- Click [Cancel] to stop creating unit-specific files.



Click "Do not display again." to stop the [Registration destination] dialog from appearing next time. Refer to "Changing the Operating Environment of the SV-Manager" on page 61 to configure the settings to display the message again.

Creating by Drag and Drop

Convert content source files, create unit-specific files, and register files to any folder without changing a single file, multiple files, or the level of the folder.

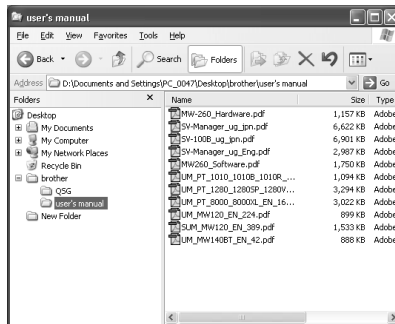


- When the content source file is right clicked, if the "Print" menu does not appear by the file, the file cannot be dragged and dropped.
- The maximum number of folder levels including the level of the drop location is 16. If the main folder is the drop location, the maximum number of folders that can be created is 14, as the top and main folders are two levels.



Create unit-specific files by drag and drop as follows.

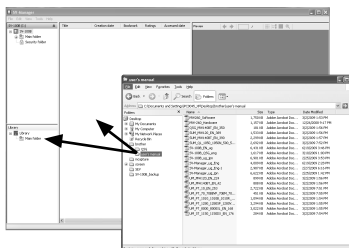
1 Select a file or folder.

- Use the Desktop or Explorer to select one or multiple content source files or folder.



2 Drag and drop a file or folder into a folder in the Hierarchical Display Area or in the File Detail Display Area.

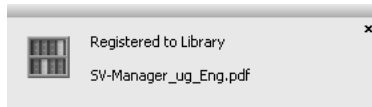
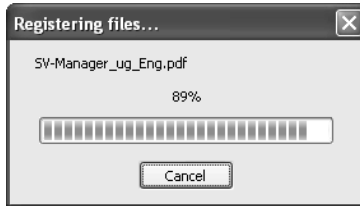
- Drag and drop into any folder in the Hierarchical Display Area.
- When a file or folder is dropped into the File Detail Display Area, the selected folder in the Hierarchical Display Area becomes the registration destination.
- The pointer changes to  when the file can be dropped. The pointer changes to  when the file cannot be dropped.



➡ The progress status of the [Registering files...] dialog displays when an application software associated with the content source file is started.
 Download from www.somanuals.com. All Manuals Search And Download.

Creating Unit-Specific Files

- When multiple content source files are selected, the message "Registered to SV-100B (unit's top folder name if changed)" or "Registered to Library" displays at the lower right of the Windows Desktop each time a unit-specific file is registered.

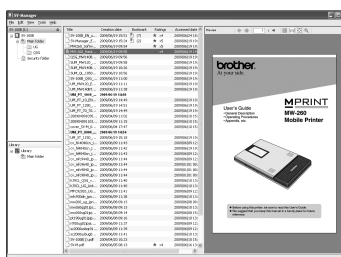


Memo

- Click [Cancel] to stop creating the displayed unit-specific files. Only completed pages are registered to the specified folder. If multiple content source files are selected, the creation of the displayed unit-specific file is stopped and the [Registering files...] dialog for the next unit-specific file appears.
- Messages at the bottom right of the Windows Desktop can be stopped by "Changing the Operating Environment of the SV-Manager" on page 61.

➔ Unit-specific files are registered to the selected folder.

- When a folder with sub-directories is selected, the folder is registered without changing the folder level.



Dragging and Dropping when SV-Manager is not Started

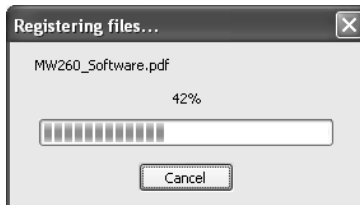
Unit-specific files can be created by dragging and dropping content source files onto the SV-Manager shortcut icon even when the SV-Manager is not started.

1 Drag and drop content source files onto the SV-Manager shortcut icon.



➔ The SV-Manager starts.

- The [Registering files...] dialog displays after starting the SV-Manager.
- The application software of the content source files starts.



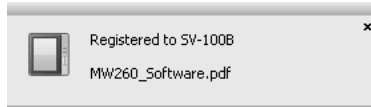
Memo

- The settings can be configured to prevent the SV-Manager from starting. Refer to "Changing the Operating Environment of the SV-Manager" on page 61.
- Click [Cancel] to stop creating the displayed unit-specific files. Only completed pages are registered to the specified folder. If multiple content source files are selected, the creation of the displayed unit-specific file is stopped and the [Registering files...] dialog for the next unit-specific file appears.
- The [Registration destination] dialog appears when multiple units are connected. Refer to "When [Registration destination] Dialog Displays" on page 33.

➔ This message displays when registration is finished.

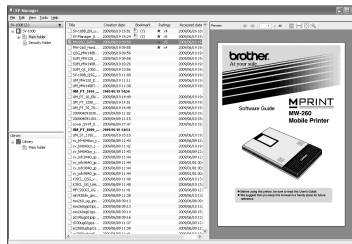
Creating Unit-Specific Files

- The "Registered to SV-100B (top folder name of the unit, if changed)" message displays at the bottom right of the Windows desktop.



Messages at the bottom right of the Windows Desktop can be stopped by "Changing the Operating Environment of the SV-Manager" on page 61.

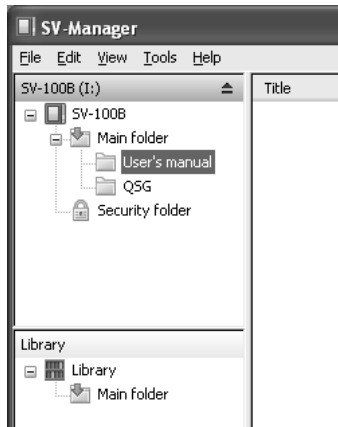
- ➔ Register unit-specific files to the Main folder.



Creating from the SV-Manager [Register data] screen

Display and create files from the [Register data] screen from [File] → [Register data] in the Menu and select the registration location folder. Follow the following steps.

- 1 Select the registration location folder in the Hierarchical Display Area.

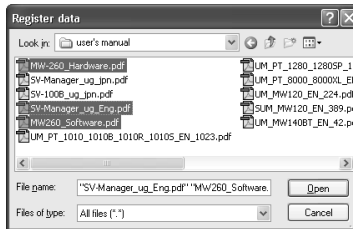


2 Right click and click [Register data].

- The folder can also be registered from [File] → [Register data] in the Menu.
- ➔The [Register data] dialog displays.

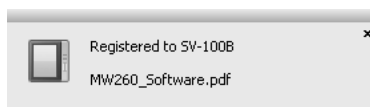
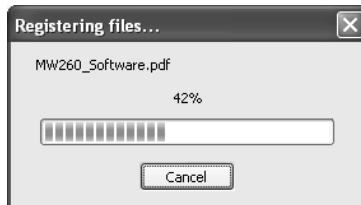
3 Select a file.

- Multiple files can be selected.



4 Click [Open].

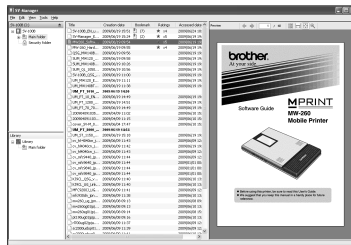
- ➔The progress status of the [Registering files...] dialog displays when an application software associated with the content source file is started.
- When multiple content source files are selected, the message "Registered to SV-100B (unit's top folder name if changed)" or "Registered to Library" displays at the lower right of the Windows Desktop each time a unit-specific file finishes registering.



- Click [Cancel] to stop creating the displayed unit-specific files. Only completed pages are registered to the specified folder.
- If multiple content source files are selected, the creation of the displayed unit-specific file is stopped when [Cancel] is clicked and the [Registering files...] dialog for the next unit-specific file appears.
- Messages at the bottom right of the Windows Desktop can be stopped by "Changing the Operating Environment of the SV-Manager" on page 61.

Creating Unit-Specific Files

- ➔ Unit-specific files are registered to the selected folder.



Changing the Print Settings of the Printer Driver

When unit-specific files are created from the content source file, the page magnification, orientation, and image resolution can be changed.

Configure the settings by opening the [Brother SV-100B Properties] dialog from the [Print] dialog of the application software or open the [Brother SV-100B Print settings] dialog from the Windows [Start] Menu.



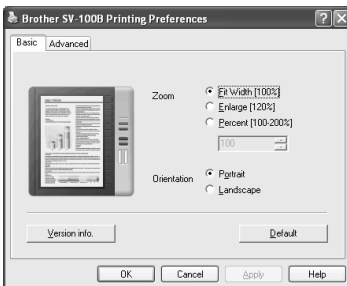
- The details configured in the [Brother SV-100B Print settings] dialog are the default values of the [Brother SV-100B Properties] dialog. If the application software and the created content details are similar, configure the [Brother SV-100B Print settings] dialog to prevent the need to change the application software settings each time.
- The settings in the [Brother SV-100B Print settings] dialog are applied when unit-specified files are created by drag and drop or on the SV-Manager's [Register data] screen.

- The [Brother SV-100B Properties] ([Brother SV-100B Print settings]) dialog includes the "Basic" and "Advanced" tabs.

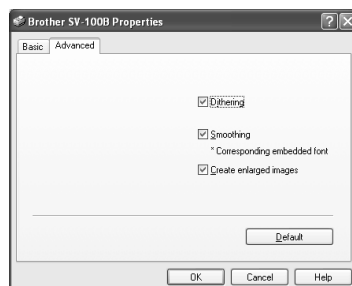
4



Contents and Folder Operations






Basic



Advanced



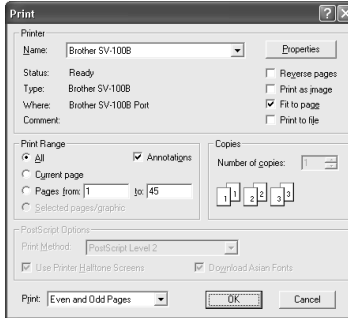
Tab	Item	Contents
Basic	Zoom	<p>This setting configures the page display size of the normal display image.</p> <p>Increasing the magnification also increases the resolution of the page, making the document easier to read on the unit.</p> <ul style="list-style-type: none"> ● Fit Width[100%] (Default Settings) <ul style="list-style-type: none"> • Creates a content page that matches the number of dots on the unit's display (1200 x 825). ● Enlarge[120%] <ul style="list-style-type: none"> • Creates a content page magnified to 120%. This page is cropped to the unit's display (1200 x 825 dots) with the page centered on the display. Margins that do not display on the unit are trimmed. ● Percent[100-200%] <ul style="list-style-type: none"> • Creates a content page magnified to a value between 100 and 200%. This page is cropped to the unit's display (1200 x 825 dots) with the page centered on the display. Margins that do not display on the unit are trimmed. <div style="display: flex; align-items: center; margin-top: 10px;">  <div style="background-color: #f0f0f0; padding: 5px; border: 1px solid #ccc;"> <p>Increasing the zoom beyond 101% will trim the margins of the page. Higher magnification trims more of the margins.</p> </div> </div>
	Orientation	<p>Configures the page to [Portrait]/[Landscape].</p> <ul style="list-style-type: none"> ● Portrait <ul style="list-style-type: none"> • The paper prints vertically. ● Landscape <ul style="list-style-type: none"> • The paper prints horizontally. <div style="display: flex; align-items: center; margin-top: 10px;">  <div style="background-color: #f0f0f0; padding: 5px; border: 1px solid #ccc;"> <p>As the paper orientation is configured in the [Page Settings] (or [Print Settings]) in the [File] menu of the application software, the orientation of the paper configured in the application software has priority.</p> </div> </div>

Tab	Item	Contents
Advanced	Dithering	<p>Turns the gradation process ON/OFF. When a check is placed by this option, this function executes the gradation conversion process on the contents, especially improving the quality of the image data.</p> <div style="display: flex; align-items: center;">  <div style="background-color: #f0f0f0; padding: 5px;"> <ul style="list-style-type: none"> A check is placed in the checkbox by default. When a check is placed in the checkbox, this may increase the print time. Reduce the print time by removing the check from the checkbox to prevent the gradation conversion process from running and to prevent increasing the image quality. </div> </div>
	Smoothing	<p>Turns the anti-aliasing process ON/OFF. When a check is placed in the checkbox, this function displays the text content in gray tones. When the image quality of a PDF file (especially when fonts are embedded) is significantly reduced, anti-aliasing improves the image quality.</p> <div style="display: flex; align-items: center;">  <div style="background-color: #f0f0f0; padding: 5px;"> <ul style="list-style-type: none"> A check is placed in the checkbox by default. When the check is placed in the checkbox, temporary high resolution image data is created, reducing free memory space. The print time also increases. Reduce the print time by removing the check from the checkbox to prevent the gradation conversion process from running and to prevent increasing the image quality. </div> </div>
	Create enlarged images	<p>Configures the setting to create the Magnified Image that displays when  on the unit is pressed. When a check is placed by this option, a magnified image (1748 x 1200 dots) with an increased resolution of about 145% is created separately from the normal display image.</p> <div style="display: flex; align-items: center;">  <div style="background-color: #f0f0f0; padding: 5px;"> <ul style="list-style-type: none"> A check is placed in the checkbox by default. When the check is removed from the checkbox, data capacity is reduced as magnified images are not created. However, when the  on the unit is pressed, the content image quality is reduced as the normal sized image is magnified. </div> </div>

- Click [Default] to return the settings of the displayed tab to factory default settings.
- The [Apply] button is in the [Brother SV-100B Print settings] dialog opened from the Windows [Start] Menu.

■ Configuring the [Print] Dialog of the Application Software

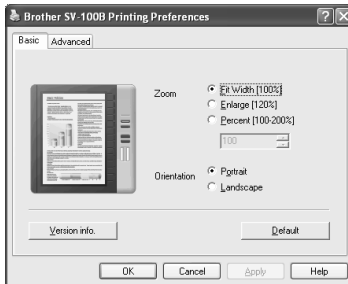
- 1 Select "Brother SV-100B" in the [Print] dialog and click [Properties].



➔The [Brother SV-100B Properties] dialog displays.

- 2 Switch tabs and configure the various items.

- 3 Click [OK].



■ Configuring from the Windows [Start] Menu

1 Click [Printer and FAX] from the Windows [Start] Menu.



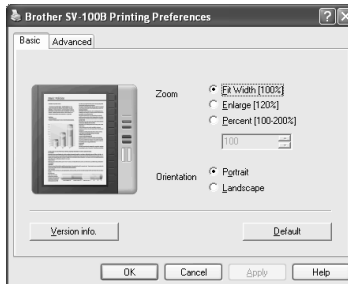
For Windows Vista, click [Control Panel] from the [Start] Menu and click [Hardware and Sound] → [Printer].

➔ The [Printer and FAX] dialog displays.

2 Point to "Brother SV-100B", right click, and click [Print Settings].

➔ The [Brother SV-100B Print settings] dialog displays.

3 Switch tabs in the [Brother SV-100B Print settings] dialog, configure the various items, and click [OK].



Adjusting the Settings According to the Content Details

A unit-specific file that is easier to browse can be created by changing the print settings to match the content details, i.e. characters, lines, images, etc.

Recommended Settings

Content Source File and Application	Content Details	Settings
PDF	Mix text and images	[Dithering]: ON [Smoothing]: ON
	Mainly text	[Dithering]: OFF [Smoothing]: ON
Word, Excel, etc.	Display mix of text and images and smooth characters	[Dithering]: ON [Smoothing]: ON
	Display mainly text and smooth characters	[Dithering]: OFF [Smoothing]: ON
	Display character outline clearly	[Dithering]: ON [Smoothing]: OFF

* "ON" indicates a checkmark is placed by the option and "OFF" indicates that the checkmark has been removed.



Displaying Contents/Rotating the Page

Displaying and Confirming the Page

The content page of the created unit-specific file can be displayed in the SV-Manager and the display status on the unit can be confirmed.

1 Click the folder icon in the Hierarchical Display Area to display the files as a list.

- ➡ The list of document files of the folder appears in the File Detail Display Area.
 - If the Security folder is closed, the file list does not display when the Security folder is clicked.
 - When the [Password setting] dialog displays, refer to "Setting a Password to the Security Folder" on page 27.

2 Click [+] by the folder to open the folder.

- The folder can also be opened by double clicking the folder icon.
- ➡ The folder expands one level.
 - The [Password authentication] dialog appears when the closed Security folder is double clicked. Refer to "Opening/Closing the Security Folder" on page 28.

3 A file in the File Detail Display Area is selected.


- ➡ The first page of the file displays in the Preview Display Area.

Switching the Display Size of the Page

4

Switching the display size of the page in the Preview Display Area. Follow the following steps.

1 Click in the Preview Display Area.

- The display can also be switched from [View] → [Zoom] → [Thumbnail]/[Fit Width]/[Fit Page]/[Actual size]/[Enlarge] in the Menu.
- Right click the Preview Display Area to similarly switch the display as in the Menu.
- ➡ The view switches to the selected display size.
 -  The view switches between normal and magnified view each time (Actual size/Enlarge) is clicked.
 - When the thumbnail page is double clicked, the view switches to whole page view.

■ Turning the Page

The content page displayed in the Preview Display Area can be turned. Follow the following steps.

1 Click either  or  in the Preview Display Area.

- The page can also be turned from [View] → [Previous page]/[Next page] in the Menu.
- When the displayed page reaches either the first or last page, the page no longer turns.

➡ The page turns one page per click.

- In Thumbnail View, the blue frame indicating a selected page moves.

■ Specifying a Page Number to Display

The display can jump to a specific page. Follow the following steps.

1 Enter the page number to display in the Page Number box in the Preview Display Area and press <Enter>.



➡ The specified page is displayed.

- In Thumbnail View, the blue frame indicating a selected page moves.

Deleting a Page

Unnecessary pages can be deleted.

.....

1 Select the page to delete in the Preview Display Area.

- Multiple pages cannot be selected at the same time.
- In Thumbnail View, the selected page is indicated by a blue frame.

.....

2 Press <Delete>.

- The page can also be deleted by right clicking and pressing [Delete: __ page] or from [Edit] → [Delete: __ page] in the Menu.

➔The [Delete page] dialog displays.

- The [Delete document] dialog displays when the file only has 1 page.

.....

3 Click [Yes].

- Click [No] to stop deleting.

➔The selected page is deleted.

Rotate the page 180 degrees and save

There are cases when the unit-specific file appears upside down on the unit, i.e. when the contents of the page is horizontal (landscape mode). In this case, rotate the page 180 degrees.

.....

1 Select the page to rotate 180 degrees in the Preview Display Area.

- Multiple pages cannot be selected at the same time.
- In Thumbnail View, the selected page is indicated by a blue frame.

.....

2 Right click and click [Save 180 degrees rotate view].

- The page can also be rotated from [Edit] → [Save 180 degrees rotate view] in the Menu.

➔The [Save 180 degrees rotate view] dialog displays.

.....

3 Click [Yes].

- Click [No] to stop rotating 180 degrees.

➔The selected page rotates 180 degrees and displays.

Changing the Orientation of the Magnified Display Page

There are cases when the unit-specific file appears upside down when the file is magnified on the unit, i.e. when the contents of the page are horizontal (landscape mode). The document appears right side up in normal display, however, the file may display upside down in magnified display. In this case, rotate only the magnified display image by 180 degrees.



Caution

- The correct orientation of the magnified display image cannot be confirmed by the magnified view of the SV-Manager (right click the Preview Display Area and click [Zoom] → [Enlarge], [View] → [Zoom] → [Enlarge] in the Menu, or [Icon]). Confirm using the unit.
- Refer to "Rotate the page 180 degrees and save" on page 47 when rotating the orientation of both the normal and magnified display images 180 degrees.

1 Select the page to change the orientation of the magnified page in the Preview Display Area.

- Multiple pages cannot be selected at the same time.
- In Thumbnail View, the selected page is indicated by a blue frame.

2 Right click and click [Page orientation] → [Portrait]/[Landscape].

- The page can also be rotated from [Edit] → [Page orientation] → [Portrait]/[Landscape] in the Menu.



Caution

The view of the magnified display image in the Preview Display Area does not change. As the proper orientation of the magnified display image cannot be confirmed in the SV-Manager, confirm using the unit.



Managing Folders/Files

Folders and unit-specific files can be moved and copied between multiple units or between the unit and library.

Creating Folders

Folders in the top folder and library can be created up to 16 levels. Folders with identical names can also be created on the same level.

1 Select the parent folder in the Hierarchical Display Area.

2 Right click and click [Add folder].

- Folders can also be created from [File] → [Add folder] in the Menu.
- ➔ A folder is added to the specified location.

- When the name, "New folder", becomes inverted, the name can be changed.

3 Enter the folder name and press <Enter>.

- ➔ The name is affixed to the folder.

Changing File/Folder Names

Unit-specific file and folder names displayed by this unit appear with the names displayed in SV-Manager. When multiple units or memory cards are used, change identical unit-specific file names to make identifying files more convenient. The unit's top folder name (SV-100B), configured at startup, can also be changed.

4

Contents and Folder Operations



The name of the library, "Library", cannot be changed.

1 Click a folder in the Hierarchical Display Area or a file in the Detail Display Area and click again.

- The names of folders/files can also be changed by right clicking a folder or file and clicking [Rename] or clicking the folder or file and selecting [File] → [Rename] in the Menu.
- Names can be changed when the Security folder is open.

- ➔ When a name becomes highlighted, the name can be changed.

2 Enter the name and press <Enter>.

- ➔ The name is affixed to the folder/file.

Moving Files/Folders

The display order of the folders in this unit appear in the order displayed in the Hierarchical Display Area. The display order of the unit-specific files appear in the order displayed in the File Detail Display Area.



Memo




- The top folder, Main folder and Security folder cannot be moved to different levels. The order of the Main folder and Security folder can be changed within the top folder.
- Unit-specific files can be moved to any location.

■ Moving by Drag and Drop

1 Drag a folder in the Hierarchical Display Area or a file in the Detail Display Area.

- One folder or multiple files can be selected.

2 Drop the folder or files in the move location.

- The pointer changes from  to  when the file can be dropped. The pointer changes to  when the file cannot be dropped.
- Drop the files in the Hierarchical Display Area to move to another folder.
- Drop the files in the File Detail Display Area to change the order.



Memo

The [Password authentication] dialog appears when a file is dropped into a closed Security folder. Refer to "Opening/Closing the Security Folder" on page 28.

➔ The [Moving files...] dialog displays.

- The moving file name displays.
- Click [Cancel] to cancel.



Memo

- Click [Cancel] to stop moving the displayed file. When multiple files are selected, the files after pressing cancel are not moved.
- When move is canceled, all the pages remain in the source location and a file up to the completed page is created in the move destination.

■ Moving by Cut and Paste



Files can only be moved to other folders by cutting and pasting. As files cannot be cut and pasted into the same folder, the sorting order cannot be changed.

1 Select a folder in the Hierarchical Display Area or a file in the Detail Display Area.

2 Right click and click [Cut].

- The file can also be cut from [Edit] → [Cut] in the Menu.

3 Click the folder destination to move.

4 Right click and click [Paste].

- The file can also be pasted from [Edit] → [Paste] in the Menu.



The [Password authentication] dialog appears when the closed Security folder is selected. Refer to "Opening/Closing the Security Folder" on page 28.

➔ The [Moving files...] dialog displays.

- The moving file name displays.
- Click [Cancel] to cancel.



- Click [Cancel] to stop moving the displayed file. When multiple files are selected, the files after pressing cancel are not moved.
- When move is canceled, all the pages remain in the source location and a file up to the completed page is created in the move destination. However, all the pages are moved when the move is within the unit.

■ Copying Files/Folders




Unit-specific files and folders can be copied into the same folder. When the same folder is specified as the copy destination, multiple unit-specific files and folders are created with the same name.

■ Copying by Drag and Drop

1 Select a folder in the Hierarchical Display Area or a file in the Detail Display Area.

- One folder or multiple files can be selected.

2 Drag while pressing <Ctrl> and drop to the copy destination folder or file insert location.

- The pointer changes from  to  when the file can be dropped. The pointer changes to  when the file cannot be dropped.



Memo

The [Password authentication] dialog appears when a file is dropped into a closed Security folder. Refer to "Opening/Closing the Security Folder" on page 28.

➔ The [Copying files...] dialog displays.

- The copying file name displays.
- Click [Cancel] to cancel.



Memo

- Click [Cancel] to stop copying the displayed file. When multiple files are selected, the files after pressing cancel are not copied.
- When copy is canceled, a file up to the completed page is created in the copy destination.

■ Copying Using the Menu

1 Select a folder in the Hierarchical Display Area or a file in the Detail Display Area.

2 Right click and click [Copy].

- The application can also be copied from [Edit] → [Copy] in the Menu.

3 Click the folder location to copy.

4 Right click and click [Paste].



Memo

The [Password authentication] dialog appears when the closed Security folder is selected. Refer to "Opening/Closing the Security Folder" on page 28.

➔ The [Copying files...] dialog displays.

- The copying file name displays.
- Click [Cancel] to cancel.



Memo

- Click [Cancel] to stop copying the displayed file. When multiple files are selected, the files after pressing cancel are not copied.
- When copy is canceled, a file up to the completed page is created in the copy destination.

Deleting Files/Folders

1 Select a folder in the Hierarchical Display Area or a file in the Detail Display Area.

- One folder or multiple document files can be selected.

2 Press <Delete>.

- Files/folders can also be deleted by right clicking and pressing [Delete] or from [Edit] → [Delete] in the Menu.

➔ The [Delete document] dialog displays.

3 Click [Yes].

- Click [No] to stop deleting.

➔ The [Deleting files...] dialog displays.

- The deleting file name displays. The file is deleted in order from the last page. When multiple files are selected, the files are deleted in order from the last page of the last file.
- Click [Cancel] to cancel.



- Click [Cancel] to stop deleting the displayed file. When multiple files are selected, the files after pressing cancel are not deleted.
- When delete is canceled, the undeleted pages remain in the file.



Managing Bookmarks

Bookmarks can be placed on pages just as post-it notes can be placed on documents. Browsing with this unit becomes more convenient by placing bookmarks at the beginning of important content or on important pages.

Placing Bookmarks

Placing bookmarks on pages without bookmarks.

1 Display the page to place a bookmark.

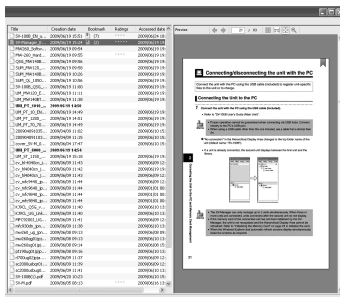
- Click a page without a bookmark in the Preview Display Area when in Thumbnail View.

2 Right click in the Preview Display Area and click [Bookmark] → [Add bookmark].

- A bookmark can also be added from [Edit] → [Bookmark] → [Add bookmark] in the Menu.

➔ A bookmark is placed at the top right of the page.

- The "Bookmark" item in the File Detail Display Area refers to the number of bookmarks placed in the file.



Deleting Bookmarks

Bookmarks can be deleted from each page or in a batch.


Deleting bookmarks from each page

Deleting the bookmarks from bookmarked pages.

1 Display a bookmarked page.

- Click a page with a bookmark in the Preview Display Area when in Thumbnail View.


2 Right click in the Preview Display Area and click [Bookmark] → [Delete bookmark].

- A bookmark can also be deleted from [Edit] → [Bookmark] → [Delete bookmark] in the Menu.
- ➔ The bookmark  is deleted from the top right of the page.
- The number of bookmarks in the "Bookmark" item in the File Detail Display Area decreases by one.

■ Batch Deleting Bookmarks

Batch delete all the bookmarks from the unit-specific files displayed in the Preview Display Area.

1 Right click in the Preview Display Area and click [Bookmark] → [Delete All bookmarks].

- The bookmarks can also be deleted from [Edit] → [Bookmark] → [Delete All bookmarks] in the Menu.
- ➔ The bookmarks  from all the pages are deleted from the top right of the page.
- The number of "Bookmark" items no longer display in the File Detail Display Area.

Using Bookmarks

Move quickly to the bookmarked page in the Preview Display Area.

1 Right click in the Preview Display Area and click [Bookmark] → [Previous bookmark] or [Next bookmark].

- Move to a bookmark also from [Edit] → [Bookmark] → [Previous bookmark] or [Next bookmark] in the Menu.
- ➔ This function jumps to the previous or next bookmarked page.
- In Thumbnail View, the blue frame indicating a selected page moves to the bookmarked page.
- When [Previous bookmark] is clicked while the first bookmarked page is displayed, the function moves to the final bookmarked page.
- When [Next bookmark] is clicked while the last bookmarked page is displayed, the function moves to the first bookmarked page.



Managing Rating Information

Changing Rating Information

Each unit-specific file can be rated.

Title	Creation date	Bookmark	Ratings	Accessed date
SV-100B_EN_u...	2009/06/19 15:51	(7)	★ x4	2009/06/24 18:
SV-Manager_E...	2009/06/19 15:24	(2)	★ x5	2009/06/19 19:
MW260_Softw...	2009/06/19 09:54		★ x5	2009/06/19 19:

1 Right click the file in the File Detail Display Area and click [Change rating] → [(No. of ★ or "No rating")].

- The rating can be changed from [Edit] → [Change rating] → [(No. of ★ or "No rating")] in the Menu.
- ➡ The number of 's appears in the "Ratings" column in the File Detail Display Area.
- No asterisks appear in the column when [No rating] is configured.



Manage Unit-Specific Files in an Intermediate File Format

Unit-specific files can be operated and managed only using SV-Manager. To move or backup unit-specific files to another PC, files need to be converted to a file format that Windows file operation can move and copy. BVD Export and BVD Import are functions for this purpose. BVD Export writes BVD files with a bvd extension.

The BVD file is called an intermediate file format as the file only targets Windows file operation. The contents cannot be browsed by an application software other than SV-Manager.

BVD files created by BVD Export can be restored to unit-specific files using BVD Import.

Writing Data in an Intermediate File Format

1 Select a file or folder using the SV-Manager.

- Multiple unit-specified files or a single folder can be selected.
- The top folder and Library can also be selected.

2 Drag and drop onto the Windows Desktop or folder.

- The application can also be executed from [File] → [BVD Export] in the Menu. Select the BVD export location and click [OK] when the [BVD Export] dialog appears.

➔ The [BVD Export] dialog displays.

- Click [Cancel] to cancel.

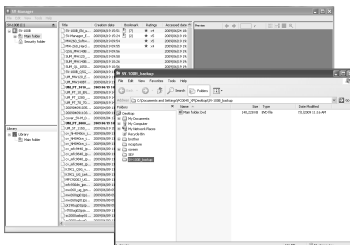


Memo

Unit-specific files in a closed Security folder cannot be exported to BVD files. This process creates a BVD file that includes an empty Security folder.

➔ This process creates BVD files  from the selected files and folders.

- Multiple BVD files are created when multiple unit-specific files are selected.
- When a folder is selected, the hierarchical structure under the folder is compressed while maintaining its structure and a single BVD file is created with the selected folder name.





- When a file with the same name already exists in the BVD export location, the [Confirm File Overwrite] dialog appears.
- When a unit-specific file with a long name is exported to a BVD file, the name is shortened to 20 characters or less.
- If characters that cannot be used in Windows file names exist in the unit-specific file or folder name, these characters are deleted and the file name is shortened. If all the characters are deleted, the file is renamed as a BVD file name, "newfile.bvd".
- If a unit-specified file with a content source file extension (.pdf, .xls, etc.) is exported to a BVD file, the BVD file is created with a file name ending in .pdf, .xls, etc. When the checkmark by [Hide extension for known file types] on the "View" tab in Explorer's [Folder Options] dialog is removed, the correct BVD extension can be confirmed.
- In the case of Windows Vista, click [Control Panel] → [Folder Options] in the Start Menu and remove the checkmark from the [Hide extensions for known file types] on the [View] tab in the [Folder Options] dialog.

Reading Intermediate File Format Data



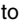
The BVD Import operation differs between the drag and drop and menu operations.

■ BVD Import by Drag and Drop

1 Select a BVD file in Windows.

- Multiple BVD files can be selected and imported.

2 Drag and drop the file into the folder in the SV-Manager's Hierarchical Display Area or the File Detail Area.

- The pointer changes from  to  when the file can be dropped. The pointer changes to  when the file cannot be dropped.



The [Password authentication] dialog appears when a file is dropped into a closed Security folder. Refer to "Opening/Closing the Security Folder" on page 28.

➔The [BVD Import] dialog displays.

- Click [Cancel] to cancel.



- Click [Cancel] to stop the import of the displayed BVD file. If multiple BVD files are selected, the import of subsequent BVD files is also stopped.
- If the folder level during BVD import exceeds 16 levels, the [Folder creation error.] dialog appears and the subsequent BVD import process stops.

➔ The BVD imported unit-specific file appears in the selected folder.

- The BVD file canceled during BVD import creates a unit-specific file up to the completed page.
- If a BVD file with multiple unit-specific files is canceled during import, unit-specific files that finished importing before cancellation and the unit-specific file that was canceled during the BVD import are created.
- When the file is dropped into the File Detail Display Area, the unit-specific file is created in the folder selected in the Hierarchical Display Area.

■ BVD Import from the Menu

1 Select the BVD import folder location in the Hierarchical Display Area.

- Open the folder before importing BVD files into the security folder.

2 Click [File] → [BVD Import] from the Menu.

➔ The [BVD Import] dialog displays.

3 Select the BVD file and click [Open].

- Multiple BVD files can be selected and imported.

➔ The [BVD Import] dialog displays.

- Click [Cancel] to cancel.



- Click [Cancel] to stop the BVD import of the displayed BVD file. If multiple BVD files are selected, the BVD import of subsequent BVD files is also stopped.
- If the folder level during BVD import exceeds 16 levels, the [Folder creation error.] dialog appears and the subsequent BVD import process stops.

➔ The imported unit-specific file appears in the selected folder.

- The BVD file canceled during BVD import creates a unit-specific file up to the completed page.
- If a BVD file with multiple unit-specific files is canceled during import, unit-specific files that finished importing before cancellation and the unit-specific file that was canceled during the import are created.

Troubleshooting

Changing the Operating Environment of the SV-Manager	61
Configuration	61
General Settings	61
Window split	61
Register document when SV-Manager is not running	61
Register help on start-up	62
Message Settings	62
Registration	62
Delete Folder/Document/Page	63
Save 180 degrees rotate view	63
Library Settings	63
Destination to save	63
Password Invalid State	64
Deleting the Unit's Password Invalid State	64
Deleting the SV-Manager's Password Invalid State	65
When Both the Unit and SV-Manager is in Password Invalid State	65
Recovering Damaged Files	66
Upgrading the SV-Manager	67
Confirming the Version Information of the SV-Manager	67
Confirming the Version Information of the Printer Driver	68
Upgrading	68
Uninstalling the SV-Manager	69
When this Message Appears	70
Troubleshooting	73



Changing the Operating Environment of the SV-Manager

Change the display style of the screen and configure the error prevention confirmation dialog of the SV-Manager in the [Settings] dialog.

The dialog includes the tabs, "General", "Messages", and "Library".

■ Configuration

1 Click [Tools] → [Settings] from the menu.

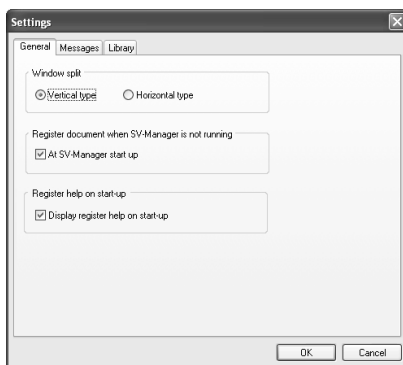
➔ The [Settings] dialog displays.

2 Switch tabs and configure the various items.

- Switch and configure between the "General", "Messages", and "Library" tabs. Refer to the "General Settings" on page 61, "Message Settings" on page 62, and "Library Settings" on page 63.

3 Click [OK].

■ General Settings



5

Troubleshooting

■ Window split

● Vertical type/Horizontal type

- Select the area display's layout of the [SV-Manager] screen . Refer to "Screen Display Format" on page 13.

■ Register document when SV-Manager is not running

● At SV-Manager start up.

- When a check is placed by this option, the SV-Manager starts when the content source file is dragged and dropped onto the SV-Manager shortcut icon when the SV-Manager is not started. Refer to "Dragging and Dropping when SV-Manager is not Started" on page 36.

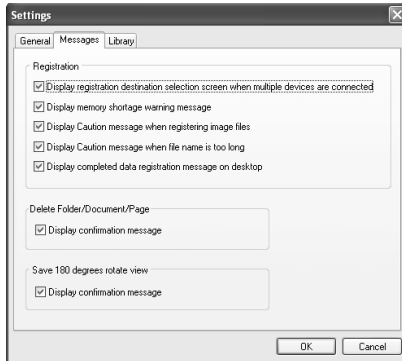
61

■ Register help on start-up

● Display register help on start-up

- When a check is placed by this option, the [Document File Registration Method] dialog appears when starting the SV-Manager. Refer to "Starting/Closing the SV-Manager" on page 11.

Message Settings



■ Registration

● Display registration destination selection screen when multiple devices are connected.

- When a check is placed by this option, the [Registration destination] dialog appears when creating unit-specific files if multiple units are connected. This unit can be selected as the registration location.
- When the check is removed, the unit that appears in the top level of the Hierarchical Display Area is automatically selected as the registration location if multiple units are connected.

● Display memory shortage warning message.

- When a check is placed by the option, the [Insufficient Space Warning] dialog appears if the empty space in the registering memory card is less than 10% of the entire capacity when creating, copying, or moving unit-specific files.

● Display Caution message when registering image files.

- When a check is placed by the option, the [Image File Registration Warning] dialog appears as the main folder automatically becomes the registration location when unit-specific files are created by drag and drop and when the content source files are image files associated with the Windows standard image viewer.

● Display Caution message, when file name is too long.

- When a check is placed by the option, the [Long File Name Warning] dialog appears, as the main folder automatically becomes the registration location when unit-specific files are created by drag and drop and when the file names of the content source files exceed 58 single-byte or 29 two-byte characters.

● Display completed data registration message on desktop.

- When a check is placed by the option, the "Registered to (unit's top folder name or Library)" message appears at the bottom right of the Windows Desktop when the creation of the unit-specific files is complete.

■ Delete Folder/Document/Page

● Display confirmation message

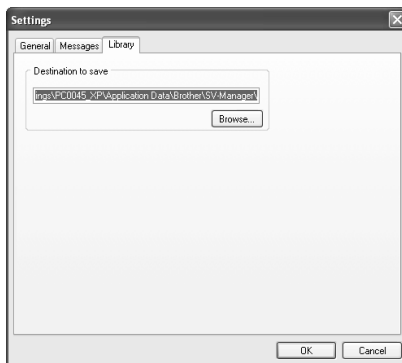
- When a check is placed by the option, the error prevention confirmation dialog ([Delete folder]/[Delete document]/[Delete page] dialog) appears when [Delete] is clicked.

■ Save 180 degrees rotate view

● Display confirmation message

- When a check is placed by the option, the [Save 180 degrees rotate view] error prevention confirmation dialog appears when [Save 180 degrees rotate view] is clicked.

Library Settings



■ Destination to save

● Save Location Box

- Configures the save location folder of the library. Click [Browse] and select the folder.



Password Invalid State

When authorization for the SV-Manager or unit fails three consecutive times, the [Password authentication] dialog closes and the password for the unit and SV-Manager becomes invalid.

The password invalid state is separately recorded on the SV-Manager and the unit. When one of the devices is in a password invalid state, the password invalid state can be deleted on the other device.

■ Deleting the Unit's Password Invalid State

.....

1 Connect the unit with the PC using the USB cable (included).

- Refer to "Connecting the Unit to the PC" on page 21.

.....

2 Open the security folder in the SV-Manager.

- Refer to "Opening/Closing the Security Folder" on page 28.

.....

3 Disconnecting the Unit from the PC

- Refer to "Disconnecting the Unit from the PC" on page 22.

.....

4 Turn ON the power to the unit and confirm that the security folder opens in the unit.

- Refer to "SV-100B User's Guide (Main Unit)".

■ Deleting the SV-Manager's Password Invalid State

.....

1 Disconnect the unit from the PC.

- Refer to "Disconnecting the Unit from the PC" on page 22.

.....

2 Turn ON the power to the unit and select the security folder in the unit.

- Refer to "SV-100B User's Guide (Main Unit)".

.....

3 Enter the correct password into the unit.

.....

4 Connect the unit with the PC using the USB cable (included).

- Refer to "Connecting the Unit to the PC" on page 21.

.....

5 Confirm that the security folder can be opened in the SV-Manager.

- Refer to "Opening/Closing the Security Folder" on page 28.

■ When Both the Unit and SV-Manager is in Password Invalid State

When authorization for both the unit and SV-Manager fails three consecutive times, the password for the unit and SV-Manager becomes invalid and the security folder does not open. The memory card has to be initialized by the SV-Manager. Unit-specific files in the security folder cannot be retrieved. Refer to "Initializing the Memory Card" on page 23.

Files that are not in the security folder can be exported as BVD files from the top folder. Refer to "Writing Data in an Intermediate File Format" on page 57.



Recovering Damaged Files

When a unit-specific file is created, a backup file is created at the same time. If the backup file is not damaged, the unit-specific file can be recovered by the SV-Manager.

If a "microSD card access error." message appears when browsing with this unit, connect the unit or memory card to the PC and recover using the SV-Manager.

1 When a damaged file is detected, the [Corrupted file Recovery] dialog appears.



2 Click [Yes].

- ➔ When the file is properly restored, the normalized unit displays in the Hierarchical Display Area.



Memo

If the file cannot be recovered, [Corrupted file Recovery Error] appears.



- Click [Yes], delete the damaged file, and leave only normal files.
- Click [No] to leave the damaged files. Unit-specific files that cannot be displayed or opened in the Preview Display Area are left without deleting. Every time the unit is connected to the SV-Manager, the [Corrupted file Recovery] dialog appears.



Upgrading the SV-Manager

Confirming the Version Information of the SV-Manager

The version information can be confirmed before and after upgrade.

.....
1 Click [Help] → [Version Info.] from the Menu.

➡ The [SV-Manager Version info.] dialog displays.

.....
2 Confirm the version and click [OK].



Confirming the Version Information of the Printer Driver

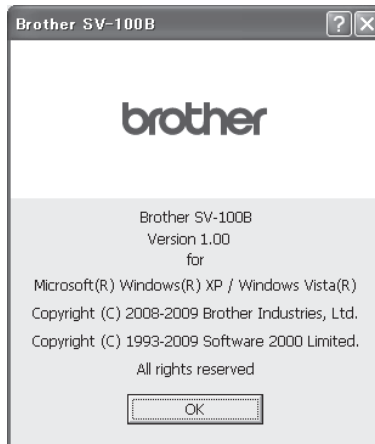
The version information of the printer driver can also be confirmed before and after the upgrade.

1 Open [Brother SV-100B Properties] or [Brother SV-100B Print settings].

- Refer to "Changing the Print Settings of the Printer Driver" on page 39 when opening the [Brother SV-100B Properties] and [Brother SV-100B Print settings].
- Open the [Brother SV-100B Properties] dialog to confirm using application software, i.e. Word, etc., and open the [Brother SV-100B Print settings] dialog to confirm from the Start Menu.

2 Click [Version Info.] in the "Basic" Tab.

➔The [Brother SV-100B] dialog displays.



- Contact Brother Call Center whether the newest version has been released.

3 After confirmation, click [OK] and close the dialog.

Upgrading

Upgrade the SV-Manager by first uninstalling the previous version before installing the new version of the SV-Manager.

Refer to "Uninstalling the SV-Manager" on page 69 regarding uninstallation.

Refer to the "Quickstart Guide" when reinstalling.



Uninstalling the SV-Manager

Uninstall the SV-Manager according to the following steps.



Temporarily store important unit-specific files, i.e. library data, etc., in an intermediate file format created by BVD export before uninstallation.

1 Close the SV-Manager if the program is started.

2 Double click [Control Panel] → [Add or Remove Programs] in the Windows Start Menu.



In the case of Windows Vista, double click [Control Panel] → [Program and Features].

➔ The [Add and Remove Program] dialog displays.

3 Click "Brother SV-Manager x.x) (xx refers to version) and click [Delete].

- The printer driver for "Brother SV-100B" is deleted together with the application for "Brother SV-Manager x.x".

4 Click [Yes] in the [SV-Manager Uninstallation] dialog.

➔ The [Uninstall] dialog displays.

5 Click [Yes] to delete the library data and [No] to leave the data. Follow the directions in the subsequent Windows messages.

- Click [No] to uninstall the SV-Manager and printer driver without deleting the library data. When the SV-Manager is reinstalled, the library data can be used again. Click [No] when upgrading or when the SV-Manager needs to be reinstalled due to problems with the SV-Manager.



When other users are logged into the computer at the same time, the program will not properly be uninstalled.



When this Message Appears

Message	Problems and Solutions
<p>[Registration Error] Registration error. Out of free memory space.</p> <p>[Copy file error] Copy file error. No available memory.</p> <p>[Moving file error] Moving file error. No available memory.</p>	<p>Problem:</p> <ul style="list-style-type: none"> • There is not enough free space in the registering memory card. <p>Solution:</p> <ul style="list-style-type: none"> • The maximum memory card capacity for this unit is 2GB. • If a unit-specific file is being created from contents with a large file size, divide the content source file and convert the file into smaller size contents. • Divide the unit-specific file to copy/move large unit-specific files. Copy the unit-specific file and create two files in the library. Divide the unit-specific files into (first and second) halves by deleting pages and convert the original file into two smaller files. • Create/copy/move fewer files when creating multiple content source files at one time or copying/moving multiple unit-specific files. • Increase the amount of free space by backing up or deleting unit-specific files that are not required by the memory card or non unit-specific files.
<p>[Corrupted file Recovery] Detected corrupted file. *Some data may not be recovered. Select Yes to continue.</p>	<p>Problem:</p> <ul style="list-style-type: none"> • A folder or unit-specific file is damaged. <p>Solution:</p> <ul style="list-style-type: none"> • Refer to "Recovering Damaged Files" on page 66.
<p>[Corrupted file Recovery Error] Corrupted file recovery error. Backup file may also be damaged. Select Yes to delete this file.</p>	<p>Problem:</p> <ul style="list-style-type: none"> • A folder or the backup of the unit-specific file is damaged. <p>Solution:</p> <ul style="list-style-type: none"> • Refer to "Recovering Damaged Files" on page 66.
<p>[Initializing error] Initializing error.</p>	<p>Problem:</p> <ul style="list-style-type: none"> • A non unit-specific BRVDOC folder exists in the memory card. <p>Solution:</p> <ul style="list-style-type: none"> • Delete the non unit-specific BRVDOC folder.

When this Message Appears

Message	Problems and Solutions
<p>[Password error] Password error. Cannot access the security folder.</p>	<p>Problem:</p> <ul style="list-style-type: none"> When password authorization for the SV-Manager fails three consecutive times, the password for the SV-Manager becomes invalid. <p>Solution:</p> <ul style="list-style-type: none"> If the password is still valid for the unit, delete the password invalid state in the unit. Refer to "Password Invalid State" on page 64.
<p>[File loading error] File type not supported.</p>	<p>Problem:</p> <ul style="list-style-type: none"> The selected intermediate file format, BVD file, may not be a unit-specific file or may be damaged. <p>Solution:</p> <ul style="list-style-type: none"> Confirm whether the selected file is a unit-specific BVD file. <hr/> <p>Problem:</p> <ul style="list-style-type: none"> The application software of the selected content source file may not be installed on the PC or not associated with the print operation. <p>Solution:</p> <ul style="list-style-type: none"> Install the application software of the selected content source file. Open the content source file with the application software and create unit-specific files from the print process.
<p>[Initializing error] Unexpected error.</p>	<p>Problem:</p> <ul style="list-style-type: none"> An unknown error has occurred during the initialization of the unit. <p>Solution:</p> <ul style="list-style-type: none"> Change unit or memory card and initialize the unit. If initialization is successful, the unit or memory card is abnormal. If an error occurs with the unit or memory card in the above procedure, the SV-Manager may be abnormal. Reinstall the SV-Manager.
<p>[Start-up Error] Software configuration error.</p>	<p>Problem:</p> <ul style="list-style-type: none"> The SV-Manager may be abnormal. <p>Solution:</p> <ul style="list-style-type: none"> Reinstall SV-Manager.

Message	Problems and Solutions
<p>[Maximum Page Warning] Cannot register more than 10,000 pages. Maximum registered page number is 9,999. Enter specific page numbers and/or range of pages to register.</p>	<p>Problem:</p> <ul style="list-style-type: none"> • The maximum number of pages that can be registered is 9,999 pages. <p>Solution:</p> <ul style="list-style-type: none"> • To register more than 10,000 pages, specify the pages to print.
<p>[Error.] Failed to register. Try it again after starting up SV-Manager</p>	<p>Problem:</p> <ul style="list-style-type: none"> • An unknown error has occurred while registering the contents. <p>Solution:</p> <ul style="list-style-type: none"> • Try registering again after restarting the SV-Manager.
<p>[** Error] ** error. Cannot write to microSD card or PC. (** is the operation name.)</p>	<p>Problem:</p> <ul style="list-style-type: none"> • If an SD card adapter is used, the memory card is set to read-only. <p>Solution:</p> <ul style="list-style-type: none"> • Move the notch from the read-only setting. <p>Problem:</p> <ul style="list-style-type: none"> • Files in PC are set to read-only. <p>Solution:</p> <ul style="list-style-type: none"> • Please unlock read-only setting in PC.
<p>Cannot access SV-Manager using a guest account.</p>	<p>Problem:</p> <ul style="list-style-type: none"> • The SV-Manager cannot be started by a guest user. <p>Solution:</p> <ul style="list-style-type: none"> • Log off Windows and log back in with a standard user or administrator account.



Troubleshooting

Issue	Problems and Solutions
Unit-specific files cannot be created by drag and drop.	<p>Problem:</p> <ul style="list-style-type: none"> Although unit-specific files can be created by drag and drop when the content source file is Word, Excel, PowerPoint, Adobe Reader, and Notepad, there are application software that are not compatible. <p>Solution:</p> <ul style="list-style-type: none"> Open the content source file with the application software and create unit-specific files from the print menu. Refer to "Create from the print image of the application software" on page 32.
When a unit-specific file is created by drag and drop, the file does not register in the specified folder.	<p>Problem:</p> <ul style="list-style-type: none"> When a PDF file, with a two byte character in the name, is created in Adobe Reader 8 by drag and drop, the file cannot be registered to the specified folder. <p>Solution:</p> <ul style="list-style-type: none"> Upgrade to Adobe Reader 9.
	<p>Problem:</p> <ul style="list-style-type: none"> The content source file cannot be registered to the specified folder in the following. The files register to the main folder. <ul style="list-style-type: none"> When image files are associated to the Windows standard image viewer When the file name is extremely long When the file name is over 259 bytes in Windows Vista <p>Solution:</p> <ul style="list-style-type: none"> Open the content source file with the application software and create unit-specific files from the print menu. Refer to "Create from the print image of the application software" on page 32.
The contents do not convert as expected when creating unit-specific files (residual images remain).	<p>Problem:</p> <ul style="list-style-type: none"> When the gradation process is turned ON in print settings of the printer driver, residual images may remain. <p>Solution:</p> <ul style="list-style-type: none"> Remove the checkmark from [Dithering] in the [Brother SV-100B Properties] or [Brother SV-100B Print settings] dialog to remove the residual images. Refer to "Changing the Print Settings of the Printer Driver" on page 39.
The contents do not convert as expected when creating unit-specific files (thin lines fade).	<p>Problem:</p> <ul style="list-style-type: none"> When the anti-aliasing process is turned ON in the print settings of the printer driver, thin lines become easily cut. <p>Solution:</p> <ul style="list-style-type: none"> Remove the checkmark from [Smoothing] in the [Brother SV-100B Properties] or [Brother SV-100B Print settings] dialog to give priority to display lines. Refer to "Changing the Print Settings of the Printer Driver" on page 39.

Issue	Problems and Solutions
<p>The file name changes when the unit-specific file is created</p>	<p>Problem:</p> <ul style="list-style-type: none"> • When a unit-specific file is created from a Word document file with single-byte brackets "(" or ")" in the name, the brackets in the file name change to underscores "_". Therefore, when files with brackets and underscores in the name are converted to unit-specific files at the same time, this may cause some confusion with the files. <p>Solution:</p> <ul style="list-style-type: none"> • When single-byte brackets are used in the file name of the Word document, change the brackets to another character.

Additional information is provided by Brother Call Center.

Appendix

Glossary	77
Index	80



The following are explanations of terms related to the functions of this unit.

A

Anti-Aliasing Process

This process smoothes rough edges on curved lines (rough edges on characters, etc.).

Application Software

This is software, i.e. Word, Excel, Adobe Reader, etc., that operates on an operating system (basic software, Windows XP or Vista for this unit) and is used by the PC user to perform specific operations.

The SV-Manager is also an application software, however, application software in this document refers to software that is not the SV-Manager.

B

Bitmap

This is a format expressed by clusters of dots in an image. This is also called a raster data format. This includes JPEG, TIFF, GIF, BMP, etc. In a more narrow sense, this term refers to Windows bitmaps with a bmp extension. On the other hand, the vector data format expresses curves and straight lines in images using mathematical formulas. This includes TrueType fonts, EPS, etc.

Bookmark

The bookmark is a mark placed on pages just as post-its are placed on paper documents.

Browse Date

This is the last date that the unit-specific file was browsed on the unit.

BRVDOC Folder

This folder is specifically created in the unit to save unit-specific files. The folder is created when the SV-Manager or the unit is initialized. The hidden folder attribute is applied to this folder.

BVD Export

This function writes unit-specific files to the intermediate file format, BVD file.

BVD File

This is the intermediate format file that BVD import reads from and BVD export writes to.

BVD Import

This function returns the intermediate file format, BVD file, into a unit-specific file and registers the file to the unit or library.

C

Contents

This is the contents of the unit-specific files or the source page of the application software data.

Cut and Paste

This is a series of functions (cut and paste) used when moving files and folders.

D

Dialog

This is the screen to simplify operations. This includes selection message screens, i.e. [Yes]/[No], etc., and print setting screens. Although this may be similar to a window, there is no menu, i.e. "File", "Edit", etc., under the title bar in the dialog.

Drag and Drop

This function refers to the action of selecting a target on the screen with the left mouse button, moving the target while holding the left button down, and releasing the left button once the target has been moved to the desired location.

F

Frame

This refers to the case that protects the substrate of the device and isolates and protects the user from the internal components.

G

Gradation Process

This is the error diffusion process used when creating the image data of the unit-specific file. The error diffusion process smoothes the gradation of the image data by processing the calculation of each dot of the image data and the surrounding dots.

I

Initialization

This is the process that deletes all unit-specific files from the memory card and creates a new top folder and empty main and security sub-folders in it. The initialization of the SV-Manager differs from Windows format as files other than the unit-specific files are not deleted from the card.

However, all files including the unit-specific files are deleted from the card when formatting the unit, which is similar to Windows format. The initialization process is similar to the SV-Manager, thereafter.

Intermediate File Format

This is the BVD file that BVD Export writes to. This file can be moved or copied using Windows file operation. BVD Import returns the file into a unit-specific file.

Invalid Password State

This state describes when files in the security folder cannot be opened.

When authorization for the SV-Manager or unit fails three consecutive times, the password for the unit and SV-Manager becomes invalid.

The password invalid state is separately recorded on the SV-Manager and the unit.

When one of the devices is in a password invalid state, the password invalid state can be deleted on the other device.

L

Library

This is a folder created on the PC hard drive installed with the SV-Manager.

M

Magnified Image

This is the content display image created at an increased resolution of 145% when creating the unit-specific file. This image is created separately from the normal display image.

This is the image of the magnified view on the unit.

Main Folder

This is the folder immediately under the unit's top folder. Unit-specific files that can be browsed without a password are registered to this folder. The name can be changed in the SV-Manager.

P

Password

This is the 4 digit password configured to the security folder.

Printer Driver

This is a type of device driver that controls general peripheral devices. The software that specifically controls the printer is called a printer driver. The SV-Manager's printer driver controls the unit-specific virtual printer within the PC, creating unit-specific files in a bitmap format.

Pull Down Menu

When the cursor is pointed to a menu item or the menu item is clicked, the submenu related to the menu item appears to drop down. This menu is called a pull down menu.

R

Rating

This is a function that attaches up to 5 stars (or no rating) to the contents.

S

Security Folder

This is a special folder created on the memory card during initialization. By configuring a password to this folder, the unit-specific file is encrypted and protected in the folder when the file is registered.

Password authentication is required when opening the security folder.

SV-Manager

This is the Windows application software that creates and manages unit-specific files from content source files.

T

Thumbnail

This is a reduced image that is smaller than the normal image size enabling files to be better displayed in a list. The thumbnails in the SV-Manager have been reduced to 25%. The origin of the term comes from English: thumb and nail.

Top Folder

This is the top folder in the unit configured to the root directory, created when the memory card is initialized by the SV-Manager.

U

Unit-Specific File

This is a data file that can be browsed in the unit.

This content is configured from image data converted to a raster data format, similar to bitmaps, and management files. The files are created from content source files in the SV-Manager.



A		D	
Accessed date	15	Delete folder/document/page	63
Actual size	19	Deleting a page	47
Application software	31, 32	Deleting files/folders	53
Area size	12	Destination to save	63
B		Display size of the page	45
Backup	5, 57	Displaying the page	45
Backup file	66	Dithering	41
Bookmark	15	[Document file registration method] dialog ...	62
Bookmarks		Drag and drop	31, 34, 36, 50, 51, 57, 58
Batch deleting	55	E	
Deleting	54	Enlarge	19
Managing	54	Excel	44
Placing	54	F	
Using	55	File detail display area	12, 15
[Brother SV-100B print settings] dialog ...	43, 39	File list	45
[Brother SV-100B properties] dialog ...	39, 42	Fit page	19
BVD export	5, 57	Fit width	19
BVD file	57	Folder	14
BVD import	5, 57, 58, 59	Creating	49
C		Open	45
Changing	61	Format	23
Changing file/folder names	49	G	
Closing	11	General	61
Completed data registration	63	H	
Connecting	21	Hiding items	17
Connection status of the unit	15	Hierarchical display area	12, 13
Contents	31	Horizontal type	13, 61
Displaying	45	I	
Copying	51, 52	Initialize	23
Copying files/folders	51	Intermediate file format	57, 58
Create enlarged images	41	Invalid password state	28, 64
Creation date	15	Deleting	64
Current page number	18	Item display width	16
Cut and paste	51	Item order	17

L

Large quantity of content 6
Library 5, 14, 63

M

Main folder 13
Memory card 24, 25
 Specific used space 25
 Used space 25
Memory shortage 62
Menu 52
Message 62
Message on desktop 63
Moving 50
Moving files/folders 50
Multiple devices are connected 62

N

Next page 18
Normal display image 40

O

Operating environment 61
Orientation 40

P

Password 27
 Changing 29
[Password authentication] dialog 28
[Password change] dialog 29
[Password setting] dialog 27
PDF 44
Post-it notes 54
Preview display area 12, 18
Previous page 18
[Print] dialog 42
Print image 31, 32
Print settings 39
Printer driver 31, 39
[Properties] dialog 25

R

Rating information 56
 Changing 56
Ratings 15
Reading data 58
Recovering damaged files 66
[Register data] screen 31, 37
Register document 61
Register help 62
[Registration destination] dialog 33
Registration destination selection screen .. 62
Remaining space 25
Remove 14, 22
Rotate the page 180 degrees 47
Rotating the page 45

S

Save 180 degrees rotate view 63
Screen configuration 12
Screen display 15
Screen display format 13
Security folder 13, 27, 32
 Closing 28
 Opening 28
Settings 61
Shortcut icon 11, 31, 36
Smoothing 41
Source file 31, 44
Specifying a page number 46
Start up 61
Starting 11
SV-Manager 4

T

Thumbnail 19
Title 15
Top folder 13
Total page number 18
Turning the page 46

U

Uninstalling	69
Unit-specific files	57
Creating	31
Upgrading	67, 68

V

Version info.	67, 68
Vertical type	13, 61

W

Warning message	62
When SV-Manager is not running	61
Window split	61
Word	44
Writing data	57

Z

Zoom	40
------------	----

brother

Free Manuals Download Website

<http://myh66.com>

<http://usermanuals.us>

<http://www.somanuals.com>

<http://www.4manuals.cc>

<http://www.manual-lib.com>

<http://www.404manual.com>

<http://www.luxmanual.com>

<http://aubethermostatmanual.com>

Golf course search by state

<http://golfingnear.com>

Email search by domain

<http://emailbydomain.com>

Auto manuals search

<http://auto.somanuals.com>

TV manuals search

<http://tv.somanuals.com>