



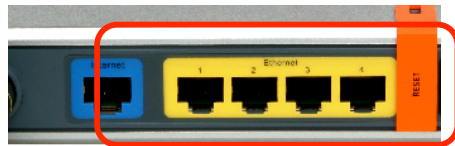
# MANUAL CONFIGURATION OF THE 3G BROADBAND ROUTER

## System Requirements

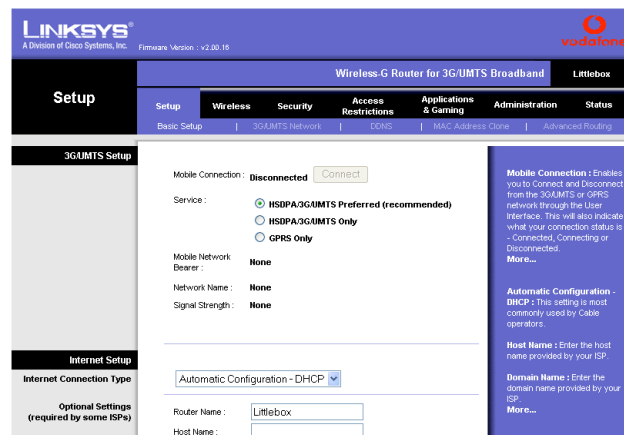
Ensure the Vodafone Mobile Connect U740 datacard is inserted into the router before plugging in the power supply.

## Setting network preferences

Connect one end of the supplied Ethernet cable into your network card/notebook and the other into one of the ports numbered 1 - 4 as highlighted below.



Log into the router's web interface by opening up your web browser and entering the router's IP address "**192.168.1.1**", default user id is "**admin**" and the same for password.



Logging in takes you to the "**Basic Setup**" screen, here you can set your preferred network e.g. "**3G Preferred**", "**3G Only**" or "**GPRS Only**". From this screen you are also able to connect/disconnect from 3G/GPRS by selecting the "**Connect/Disconnect**" button.

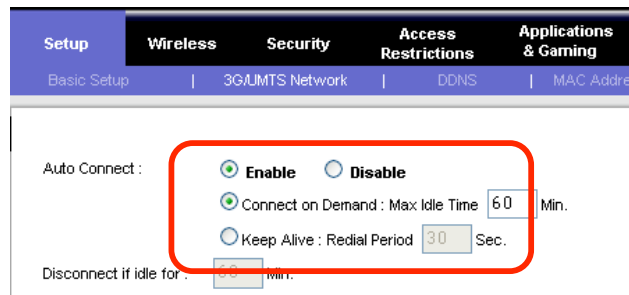


Mobile Connection : **Connected** Disconnect  
Service :  **3G/UMTS Preferred (recommended)**  
 3G/UMTS Only  
 GPRS Only  
Mobile Network Bearer : **UMTS**  
Network Name : **vodafone NZ**  
Signal Strength : **Excellent**

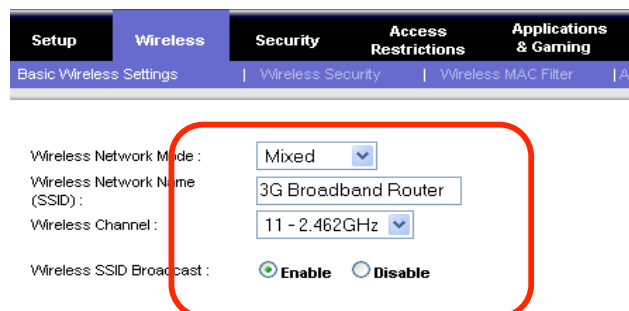
This screen also allows you to set your time zone. Scroll to the bottom of the main screen and select your time zone from the drop-down box as below:

Time Zone :  
  
 Automatically adjust clock for daylight saving changes

Select the **"3G/UMTS Network"** tab – this will allow you to configure settings such as Auto Connect and view details of your card:



Select the **"Wireless"** tab. If you wish to use WiFi change your SSID (this is the broadcast name of your wireless network), select **"Enable"** to activate WiFi and select your network type (Mixed supports both 802.11 B & G):





## Setting up wireless security

**Important:** If you are going to have WiFi enabled on your router it is highly recommended that you also setup wireless security. To enable and setup wireless security select the **“Wireless Security”** tab and select **“WEP”** from the drop-down box (this is the most common form of Wireless security used).

Setup | **Wireless** | Security | Access Restrictions | Applications & Gaming

Basic Wireless Settings | **Wireless Security** | Wireless MAC Filter | Ac

Security Mode : WEP

Save Settings | Cancel Changes

A new window will now open here you can now either create your own key (10 or 26 alphanumeric digits depending on level of encryption selected), or you can enter a **“Paraphrase”** which will automatically generate a key for you. Example as below:

Basic Wireless Settings | **Wireless Security** | Wireless MAC Filter

Security Mode : WEP

Default Transmit Key :  1  2  3  4

WEP Encryption : 128 bits 26 hex digits

Passphrase : vodafone

Key 1 : 9DAC9DEA0605D3C45A9FB57A83

Key 2 : F6112CDC75770160D83CA23522

Key 3 : EF4EF52BF671346FFD89054B15

Key 4 : 5806DC90ED3D668F352EB34A60

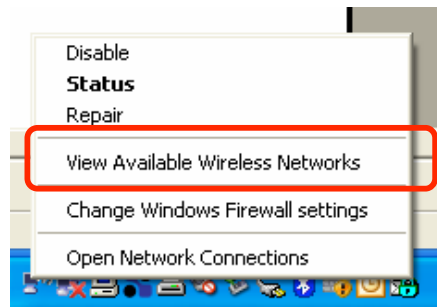
Select **“Save Settings”** and the key will be applied and the router will restart automatically

## Connecting to your 3G Broadband Router wirelessly (Windows XP)

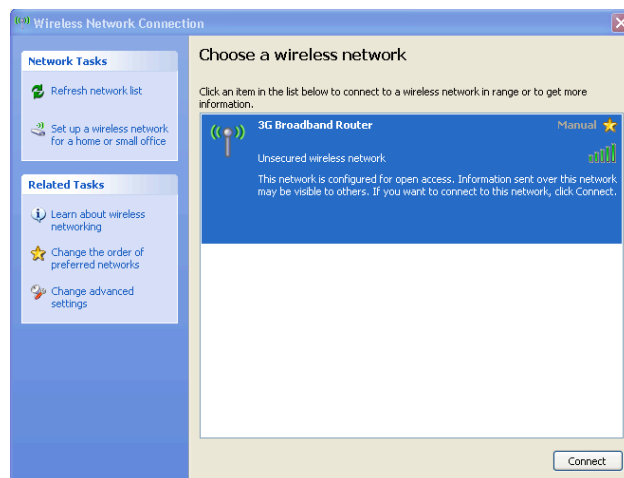
The following steps outline what you need to do to connect to your securely configured router via WiFi.

Ensure your router is powered up and you have followed all the steps required to configure and enable WiFi. You also need to ensure that wireless is both installed and enabled on the device you wish to connect to the router.

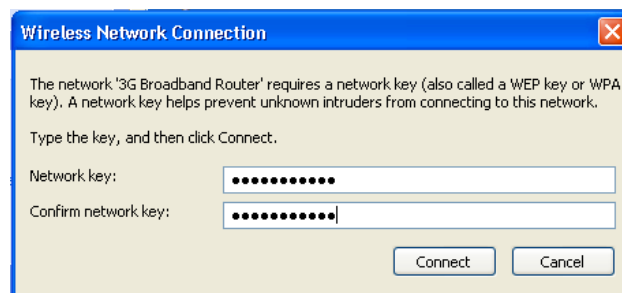
Your computer should automatically detect the new wireless network when in range, to view the network right-click on the **wireless connection** icon in your system tray and select **“View available Wireless Networks”** as shown below:



You will now have a list of available networks displayed. Select the name that corresponds to your router by double-clicking on it.



You will now be prompted for the WEP key you setup previously, you will need to enter the key twice and select **Connect**.



Your connection will now be setup and you will be able to access the router's web interface and connect to the internet.

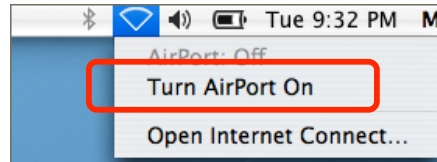
Your computer will remember this connection along with the key so each time the router is powered up and you are within range you will be able to connect easily.



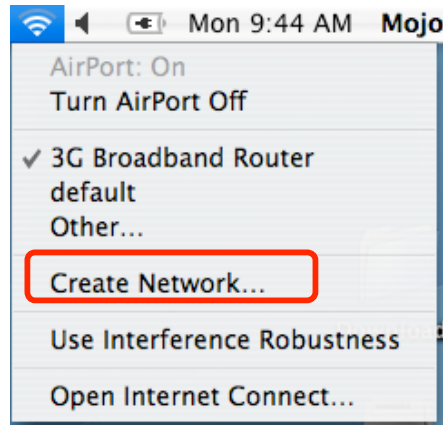
## Connecting to your 3G Broadband Router through WiFi (Macintosh)

Firstly ensure your router is powered up and you have followed all the steps required to configure and enable WiFi.

Check that wireless is both installed and enabled on your Mac. To check you will need to click on the Wireless icon and select "Turn AirPort on".



Your Mac should automatically detect the new wireless network when in range, to view the network click on the AirPort icon and select the name of your network from the list:



You will now need to enter the password (key) you setup on the router previously in order to be able to connect. You are able to select "Remember password in my keychain" which will allow you to connect again automatically each time you are in range.





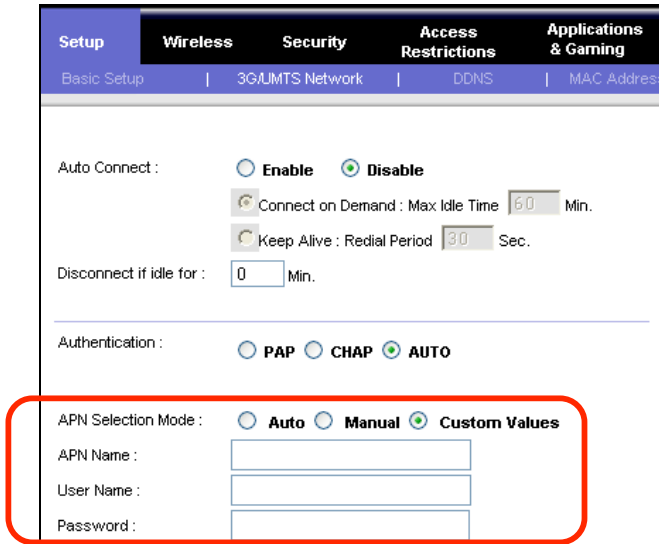
## Configuring APN's

In some cases you may need to manually configure which APN your router uses to connect to the internet or your work network.

To change the APN, you will first need to log into the routers web interface. Select the **"3G/UMTS Network"** tab:



Under **"APN Selection Mode"** select **"Custom Values"**. You will now see three new fields appear (**"APN Name"**, **"User Name"** & **"Password"**)



You will now need to enter the APN you wish to use in the **"APN Name"** box. You will not need to enter a username and password. Select **"Save Settings"** by scrolling down to the end of the screen:



## Free Manuals Download Website

<http://myh66.com>

<http://usermanuals.us>

<http://www.somanuals.com>

<http://www.4manuals.cc>

<http://www.manual-lib.com>

<http://www.404manual.com>

<http://www.luxmanual.com>

<http://aubethermostatmanual.com>

Golf course search by state

<http://golfingnear.com>

Email search by domain

<http://emailbydomain.com>

Auto manuals search

<http://auto.somanuals.com>

TV manuals search

<http://tv.somanuals.com>