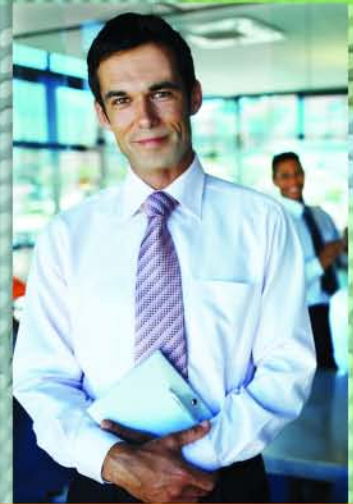


# Canon

## DR-2050C



IMAGE FILING  
SYSTEMS



# DR-2050C

## IMAGE FILING SYSTEMS

### DESIGNED FOR TIGHT BUDGETS AND LIMITED WORKSPACES

Whether you're running a small business or managing distributed imaging applications, you need to trim the fat in technology investments. The Canon DR-2050C Color Scanner suits both tight budgets *and* tight spaces.

#### Making it Easier to Convert Vital Documents

Don't let the small footprint of the DR-2050C fool you. It offers high-quality image output, with resolution of up to 600 dpi for all your 24-bit color, grayscale, and black-and-white scanning needs. With scanning speeds of up to 20 pages or 40 images per minute,\* the DR-2050C was built to provide incredible throughput for high-performance duplex scanning. Superior speed and exceptional value are just the beginning of what makes Canon's DR-2050C scanner a leader in its class.

Productivity enhancement features truly set the DR-2050C apart from other workgroup scanners. Up to 100 user-preference profiles can be programmed and stored for fast, easy access to frequently used settings. A variety of user-friendly image processing functions, such as front and back Color Dropout, Text Enhancement, and Pre-Scan, help you to consistently capture document data with accuracy and simplicity. As an intelligent document scanner, the DR-2050C offers automatic image cleanup capabilities for removing blank pages and borders, document skew correction, and edge enhancement. And, it's uniquely equipped with a Folio function for scanning 11" x 17" paper sizes. Together, these features help make the DR-2050C color scanner a valuable addition to any workplace.



\*Examples based on typical settings, rated in pages/images per minute with letter-sized documents at 200 dpi unless specified. Actual processing speeds may vary based on PC performance and application software.

### Reliability Comes Standard

The DR-2050C scanner incorporates Canon's renowned, high-precision roller system that helps deliver smooth, jam-free feeding. Whether scanning single-page documents or multiple sheets of mixed document sizes and thickness, the DR-2050C scanner offers uninterrupted performance with one of the most reliable feeding systems in its category. It even handles multipart forms with a simple flip of the Bypass Switch for convenient, non-separation feeding.

### More Than a Scanner, It's a Document Imaging System

Bundled with CapturePerfect® 3.0, Adobe® Acrobat® 7.0 Standard, and OmniPage®SE 4, you get more than a scanner when you purchase the DR-2050C. Canon's CapturePerfect application is loaded with unique, easy-to-use features, making image capture a more user-friendly experience. Offering a number of convenient scanning options, you can save, print, or e-mail scanned images with one-click simplicity. You can even project scanned images through a projector for business presentations. The Scan Area setting enables you to capture only the image data you need. CapturePerfect also provides flexible editing functions that allow you to insert or add images to an existing file, replace or delete specified pages, and combine and save multiple file formats.

Built-in OCR capabilities help make it easy to create searchable PDF files and generate file name indexing with CapturePerfect. Also, once scanned, the PDF security settings allow you to encrypt sensitive documents or control printing and editing rights to help you meet industry security requirements. Designed with a Hi-Speed USB 2.0 interface and bundled with the latest document imaging software, you'll find that the DR-2050C is a small investment worth making.

### Add High Performance and Productivity to Your Busy Office

Leave it to Canon to provide your office with innovative technology at an affordable price. The DR-2050C gives you fast, high-performance duplex scanning in a compact, sleek package. Not only will you enjoy the ease-of-use built into the DR-2050C color scanner, but you'll soon discover that it's time and money well spent.



# DR-2050C

## DR-2050C Specifications

Type: Compact Color Document Scanner  
Item Number: 0433B002  
Document Feeding: Automatic or Manual  
Document Size  
Width: 2.1" – 8.5"  
Length: 2.8" – 14"  
Weight  
Automatic Feeding: 14 to 32 lb. Bond  
Manual Feeding: 11 to 40 lb. Bond  
Feeder Capacity: 50 Sheets  
Grayscale: 8-Bit  
Color: 24-Bit  
Scanning Element: Contact Image Sensor (CMOS)  
Light Source: RGB LED  
Scanning Modes: Simplex, Duplex, Color, Grayscale, Black and White, Text Enhancement

Dropout Color: RGB  
Optical Resolution: 600 dpi  
Output Resolution: 100/150/200/240/300/400/600 dpi  
Scanning Speeds\*  
(LTR Portrait @ 200 dpi)  
Black and White: Simplex 20 ppm 40 ipm Duplex 40 ipm  
Grayscale: 20 ppm 40 ipm  
Color @ 150 dpi: 10 ppm 20 ipm  
Interface: Hi-Speed USB 2.0  
Scanner Drivers: For Windows® 98/2000/Me/XP  
Bundled Software: ISIS/TWAIN Driver, CapturePerfect 3.0, Adobe Acrobat 7.0 Standard, OmniPage SE 4  
Dimensions (H x W x D): 7.8" x 11.7" x 3.9"  
Weight: Approx. 5 lb.

Power Consumption: Max. 13W  
(Energy Saving Mode: 4W or less)  
Daily Duty Cycle: Approx. 700 Scans  
Options: Exchange Roller Kit (7982A001)  
Carrying Case (0249V914)  
Two-Year CarePAK Exchange Program (7982A006)

\*Examples based on typical settings, rated in pages/images per minute with letter-sized documents at 200 dpi unless specified. Actual processing speeds may vary based on PC performance and application software.

**NOTE:** The DR-2050C has been tested for compatibility with many of the industry's leading document management solution providers. Please visit the scanner's product page on Canon U.S.A.'s Web site at [www.usa.canon.com](http://www.usa.canon.com) for a comprehensive compatibility listing.

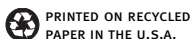
**Canon**  
*image*ANYWARE

1-800-OK-CANON  
[www.usa.canon.com](http://www.usa.canon.com)

Canon U.S.A., Inc.  
One Canon Plaza  
Lake Success, NY 11042

As an ENERGY STAR® Partner, Canon U.S.A., Inc. has determined that this product meets the ENERGY STAR® guidelines for energy efficiency. ENERGY STAR and the ENERGY STAR mark are registered U.S. marks. ISIS is a trademark of Captiva Software Corporation. Adobe, the Adobe logo, and Acrobat are registered trademarks of Adobe Systems Incorporated in the United States and/or other countries. OmniPage is a registered trademark of Nuance Communications, Inc. or its affiliates in the United States and/or other countries. Windows is a registered trademark of Microsoft Corporation in the United States and/or other countries. CANON is a registered trademark of Canon Inc. in the United States and may also be a registered trademark or trademark in other countries. CAREPAK is a registered trademark of Canon U.S.A., Inc. IMAGEANYWARE is a trademark of Canon. All referenced product names and other marks are trademarks of their respective owners. Specifications subject to change without notice.  
©2006 Canon U.S.A., Inc. All rights reserved.

0062W341  
0406R-2050C-7.5M-LV



## Free Manuals Download Website

<http://myh66.com>

<http://usermanuals.us>

<http://www.somanuals.com>

<http://www.4manuals.cc>

<http://www.manual-lib.com>

<http://www.404manual.com>

<http://www.luxmanual.com>

<http://aubethermostatmanual.com>

Golf course search by state

<http://golfingnear.com>

Email search by domain

<http://emailbydomain.com>

Auto manuals search

<http://auto.somanuals.com>

TV manuals search

<http://tv.somanuals.com>