



## DIGITAL PHOTO FRAME



### User Manual

7" Digital Photo frame | DPB770

# CONTENTS

<b>1. Foreword.....</b>	<b>2</b>
<b>2. Safety and Maintenance.....</b>	<b>2-3</b>
<b>3. Summary.....</b>	<b>3-4</b>
<b>4. User's Guide.....</b>	<b>4-8</b>
<b>5. Trouble shooting.....</b>	<b>9</b>
<b>6. Production specifications.....</b>	<b>9</b>

## Foreword

Appreciate for your choice to our digital photo frame .We prepare the Service manual for your reference so that you can operate this machine easily

## Special Notice

A few highlights or dark spots may occur on the LCD screen .It is a very common problem to the active matrix display technology ,and does not necessarily means any defects or faults .Never try to repair this machine by yourself .In case of any fault or failure, please turn off the machine at once ,And notify our company or the authorized dealer .The photo frame is made up of many precision electronic components .Any disassembly or modification may lead to damage or breakage .

## Safety & Maintain

To make sure the long lifetime of the digital photo frame, please pay attention to following instruction :

- 1.Please follow the instruction in the manual ,pay attention to the warnings .
- 2.Please read the manual carefully when you use this machine firstly .
- 3.Please use the default AC Adapter together with the machine ,do not use any other adapter ,Otherwise your digital frame will be damaged .
- 4.Please avoid sprinkling water or liquid on the machine ,when you use it ,please be far from the water .
- 5.Don't press the digital frame greatly ,otherwise the product will be damaged . Please put the digital frame on the flat and steady surface to avoid damage.
- 6.All the opening hole or the slot is used for the ventilation .Don't block up all these hole to disperse the hot .Also don't put and store the machine near to the heat or the place full of dust .
- 7.Please pay attention and follow the power criterion in the bottom or back of the digital frame. If you are not sure the local voltage .Please consult the local dealer or your power supply company .
- 8.Don't trample or press the cable .
- 9.If you use the extension cable to supply the power to the digital frame .Please make sure that the total Ampere of the total power consumption is not more than the max Ampere of extension or the plug on the wall stipulated.
- 10.Don't put any other thing into the slot of the machine .
- 11.LCD panel is easy to be destroyed ,please don't press or bump it strongly .
- 12.Don't touch the bottom of the digital frame for a long time to avoid burning your skin ,As the long-playing frame will be not .
- 13.It is the normal circs that the Adapter disperse hot when it works ,Don't put the AC adapter on the weak-ovenproof surface .
- 14.Before clean the product ,please cut off the power and pull out the plug firstly , Then use the soft and clear cloth to clean ,Please don't use sprayer solvent or the other cleanser .
- 15.Before you move the machine, please make sure the power cut off .

## LCD Maintenance

LCD screen is an expensive device and should pay attention to the followings .

### Warning :

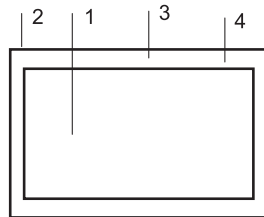
1. Gently wipe the LCD screen with a soft cloth ,Don't touch the screen surface , the screen can be scratched or broken ,don't sprinkle the cleanser directly to the surface .
2. To avoid the LCD breakage ,Don't place article on the photo frame and press the frame crust .

## 1、 Summary

This chapter introduce different parts of the digital photo frame.

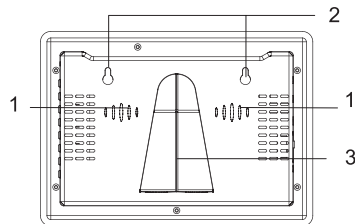
### 1.1 Front View

- 1、 LCD TFT screen
- 2、 Out Frame
- 3、 IR window
- 4、 Decorated Panel



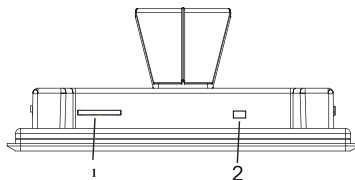
### 1.2 Back View

- 1、 Built-in Speaker
- 2、 Wall Mount Holes
- 3、 Easel Support  
(please use it when you put the product on the desk)



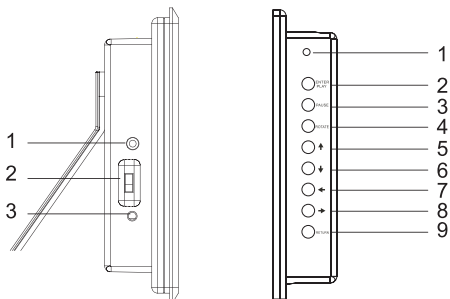
### 1.3 Top View

- 1、 SD、 MS、 MMC card slot
- 2、 USB port



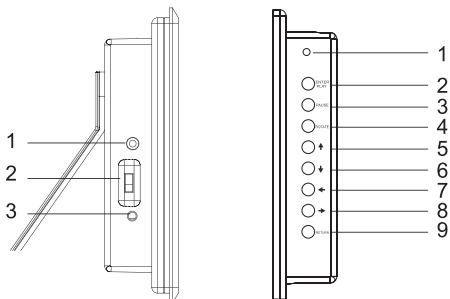
### 1.4 Left Side View

- 1、 Earphone
- 2、 Power on/off
- 3、 Power supply :DC5V/1500m A

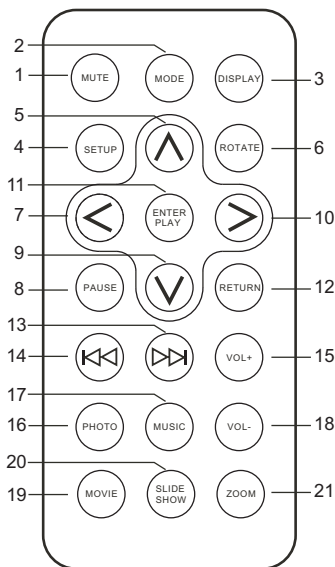


### 1.5 Right Side View

- 1、 LED indicator light
- 2、 Enter/Play
- 3、 Pause
- 4、 Rotate
- 5、 Up
- 6、 Down
- 7、 Left
- 8、 Right
- 9、 Return



## 2、 Diagram of the remote control



- 1、 MUTE : Press this button to cancel sound ,  
press again to resume the sound .  
(Under mute mode, it also can resume  
sound by pressing Volume+/Volume -)
- 2、 MODE: full screen / stand display switch
- 3、 DISPLAY: display current file information
- 4、 SETUP: press this key enter to setting  
menu directly
- 5/7/9/10、 Direction buttons
- 6、 ROTATE: Under photo mode ,press this  
button to rotate photo 0,90,180,270 degree
- 8、 PAUSE/PLAY: Under music mode . press  
this button to enter/play
- 11、 ENTER/PLAY: Confirm and play
- 12、 RETURN:Return to last menu.
- 13/14、 FAST FORWARD/FAST BACKWARD:  
Under music mode .press this key to  
fast forward/fast backward
- 15/18、 VOLUME+/VOLUME-
- 16、 PHOTO:press this button display photo  
directly
- 17、 MUSIC: press this button to play music  
directly
- 19、 MOVIE: press this button to play video files
- 20、 SLIDE SHOW : Press this button to operate  
background music function
- 21、 ZOOM:Zoom in /Zoom out

## 3、 User's Guide

### Start menu :

It will show the picture as below  
when the power switch on .

PHOTO : Enter photo play mode.

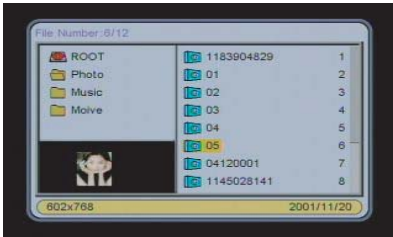
MUSIC : Enter music play mode

PHOTO MUSIC : Enter background  
music play mode .

MOVIE: Enter movie play mode .

SETUP :Enter system setting menu.

## Photo play mode:



【 Media manager 】



【 scan mode 】

## MUSIC play mode:



【 Media manager 】

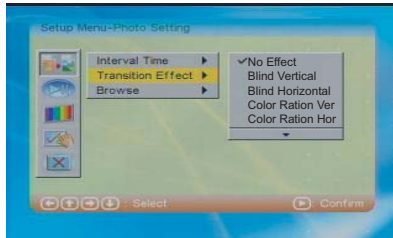
## PHOTO + MUSIC play mode:



【 Media manager 】

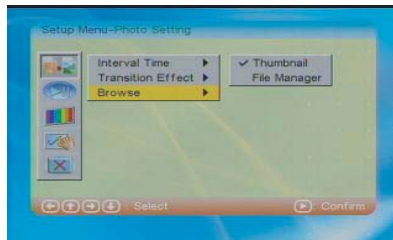
## Transition Effect:

This option to set photo play effect mode .



## File Browse function:

This option to setting choose the mode of (Photo) function enter to . total have <media manager> and <scan mode > for your choice .



## Auto-Play

### Photo

This option for user to choose the (PHOTO) auto play on or off .If turn on auto play .When user choose (PHOTO) function . it will enter (slide show mode) automatically . If close auto play .then enter to (media manager ) or (scan mode ) to browse photos.



## Music

This option for user to choose the (Music) auto play on or off. When turn on auto play .It will play music automatically after enter (media manager). If close auto play .then user should choose the desired file ,press (Play) button to play .

## Movie

This option for user to choose (Movie) auto play on/off function .If turn on auto play .when user choose (Movie ) function .it will play movie automatically . If turn off auto play .then enter (media manager ) for user scan movie .

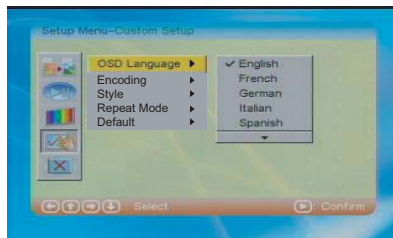
## Display Setup

This option is for user to change Brightness/Contrast/Saturation. When user choose(Display Setup) option, Customer can adjust the Brightness/Contrast/ Saturation manually. The default exfactory is set to 0.

## Customer setup

### OSD Language

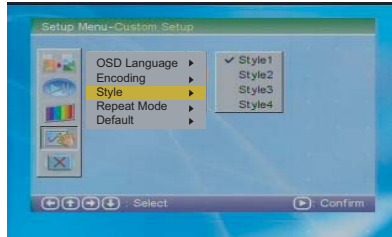
This option for user setting OSD (On Screen Display ) language . It including English ,French German ,Spanish for choose .





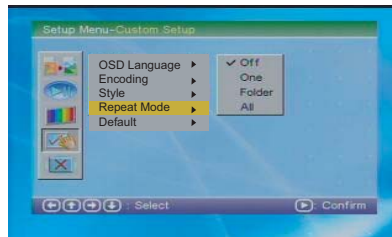
## Style

For user choose the favorite style .It including four style to choose .



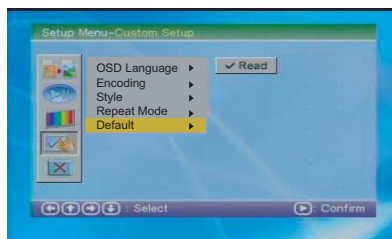
## Repeat Mode

For user setting Repeat Mode .It including Off ,One ,Folder and All four item for choose .



## Default

This option for user return to Default setting, After this operation .then all the setting resume to default system setting .



## Exit

Confirm Setup option .return to main menu .

## 5、 Trouble shooting

Problem	Solution
No sound	1.The mute button is on 2.The volume is at lowest level
No background music	No MP3 music in the memory card
Cannot power on	1.AC plug is not connected well 2.AC adaptor cannot work
Cannot read card	Please make sure whether memory card is correct
Cannot play file	the file format is not support
No function of Remote control	Check the battery is without power, please change the battery

## 6、 Product specifications

### Input formats:

Memory Stick (MS),Memory Stick DUO, Multi Media Card TM(MMC)  
Secure Digital TM(SD)

Support file formats:JPEG,WMA,MP3,MP4,AVI

Display:7"LCD screen

Frequency output :sound (1w\*2)

Scan Mode: Full screen standard .aspect ratio ,slide show ,compress picture

Picture Effect :rotate ,zoom, scan , transition ,slide show interval

Language : multilateral language

Power output :DC 5V/1500m A

### Accessory :

Ac adapter :1 PC

Remote control :1PC

Use manual :1PC

Stand:1PC

## Free Manuals Download Website

<http://myh66.com>

<http://usermanuals.us>

<http://www.somanuals.com>

<http://www.4manuals.cc>

<http://www.manual-lib.com>

<http://www.404manual.com>

<http://www.luxmanual.com>

<http://aubethermostatmanual.com>

Golf course search by state

<http://golfingnear.com>

Email search by domain

<http://emailbydomain.com>

Auto manuals search

<http://auto.somanuals.com>

TV manuals search

<http://tv.somanuals.com>