



2000W

ELECTRIC CHAIN SAW

ELC2000

INSTRUCTION MANUAL

GMC[®]

GLOBAL MACHINERY COMPANY

Black	Magenta	Code: ELC2000		
Cyan	Yellow	Date: 070110	Edition: 12	Op: DCR
用本处所有显示的颜色打印包装资料。Print artwork using ALL inks shown here.				

Contents

Warranty	2
Introduction	3
Environmental protection	3
Description of symbols	3
Specifications	3
Safety instructions	4
Additional safety rules for electric chain saws	5
Know your product	7
Mounting the chain bar	8
Setting the chain saw tension	8
Oil filling	8
Checking the automatic oil function	9
Avoiding kickback	9
Avoid jamming	9
Extension cord support	9
Before start-up	10
Start up	10
Operating the electric chain saw	10
Cross cutting	10
Branch cutting	10
Chain sharpening and maintenance	11
Chainsaw maintenance	11
First time user	12
General Inspection	12
Power cord maintenance	12
Storage	12

Warranty Power Tools

Whilst every effort is made to ensure your complete satisfaction with this tool, occasionally, due to the mass manufacturing techniques, a tool may not live up to our required level of performance and you may need the assistance of our service department.

This product is warranted for a 2-year period for home domestic use from the date of the original purchase. If found to be defective in materials or workmanship, the tool or the offending faulty component will be repaired or replaced free of charge with another of the same item.

A small freight charge may apply. Proof of purchase is essential. We reserve the right to reject any claim where the purchase cannot be verified.

This warranty does not include damage or defects to the tool caused by or resulting from abuse, accidents, alterations or commercial or business use. It also does not cover any bonus items or included accessories. Only the power tool is covered under this warranty.

With continuing product development, changes may have occurred which render the product received slightly different to that shown in this instruction manual.

Please ensure that you store your receipt in a safe place. Conditions apply to the above warranty. For full details of the warranty terms and conditions please refer to our website – www.gmcompany.com

For prompt service we suggest you log your service request online - www.gmcservice.com.au, should you not have access to the internet, please contact our service department on 1300 880 001 (Australia) or 0800 445 721 (New Zealand).

Introduction

Your new GMC power tool will more than satisfy your expectations. It has been manufactured under stringent GMC Quality Standards to meet superior performance criteria.

You will find your new tool easy and safe to operate, and, with proper care, it will give you many years of dependable service.

CAUTION. Carefully read through this entire Instruction Manual before using your new GMC Power Tool. Take special care to heed the Cautions and Warnings.

Your GMC power tool has many features that will make your job faster and easier. Safety, performance, and dependability have been given top priority in the development of this tool, making it easy to maintain and operate.

Environmental protection



Recycle unwanted materials instead of disposing of them as waste. All tools, hoses and packaging should be sorted, taken to the local recycling centre and disposed of in an environmentally safe way.

Description of symbols

The rating plate on your tool may show symbols. These represent important information about the product or instructions on its use.



Wear hearing protection.

Wear eye protection.

Wear breathing protection.



Double insulated for additional protection.



N380

Conforms to relevant standards for electromagnetic compatibility.



Don't use one handed.



Don't use in the wet.



Don't use point of the bar.



Hold the electric chainsaw with two hands.



If cordset is damaged or cut discontinue use and remove it from the mains immediately.



Use cutting length of the bar.

Specifications

Nominal Voltage:	230-240 Vac ~ 50Hz
Rated Power:	2000W
Cutting Speed:	10m/s
Oil Tank Capacity:	250ml
Chain Brake:	0.15 Sec.
Protection class:	Double insulation
Bar Length:	400mm, 16"
Acceleration:	Rear Handle under load 3.79 m/s ² Front Handle underload 4.96 m/s ²
Sound Power Level Under Load:	97 dB(A)
Acoustic Pressure Level Under Load:	86 dB(A)
Weight	5.8Kg

Safety Instructions

WARNING. Read and understand all instructions. Failure to follow all instructions listed below may result in electric shock, fire and/or serious injury. The term "power tool" in all of the warnings below refers to your mains-operated (corded) power tool or battery-operated (cordless) power tool.

Save these instructions

Work area

- Keep work area clean and well lit. Cluttered and dark areas invite accidents.
- Do not operate power tools in explosive atmospheres, such as in the presence of flammable liquids, gases, or dust. Power tools create sparks which may ignite the dust or fumes.
- Keep children and bystanders away while operating a power tool. Distractions can cause you to lose control.

Electrical safety

- Power tool plugs must match the outlet. Never modify the plug in any way. Do not use any adapter plugs with earthed (grounded) power tools. Unmodified plugs and matching outlets will reduce risk of electric shock.
- Avoid body contact with earthed or grounded surfaces such as pipes, radiators, ranges and refrigerators. There is an increased risk of electric shock if your body is earthed or grounded.
- Do not expose power tools to rain or wet conditions. Water entering a power tool will increase the risk of electric shock.
- Do not abuse the cord. Never use the cord for carrying, pulling or unplugging the power tool. Keep cord away from heat, oil, sharp edges or moving parts. Damaged or entangled cords increase the risk of electric shock.
- When operating a power tool outdoors, use an outdoor extension cord suitable for outdoor use. Use of a cord suitable for outdoor use reduces the risk of electric shock.

Personal safety

- Stay alert, watch what you are doing and use common sense when operating a power tool. Do not use a power tool while you are tired or under the influence of drugs, alcohol, or medication. A moment of inattention while operating power tools may result in serious personal injury.
- Use safety equipment. Always wear eye protection. Safety equipment such as a dust mask, non-skid safety shoes, hard hat, or hearing protection used for appropriate conditions will reduce personal injuries.
- Avoid accidental starting. Ensure the switch is in the off-position before plugging in. Carrying power tools with your finger on the switch or plugging in power tools that have the switch on invites accidents.
- Remove any adjusting key or wrench before turning the tool on. A wrench or a key that is left attached to a rotating part of the power tool may result in personal injury.
- Do not overreach. Keep proper footing and balance at all times. This enables better control of the power tool in unexpected situations.
- Dress properly. Do not wear loose clothing or jewellery. Keep your hair, clothing and gloves away from moving parts. Loose clothes, jewellery or long hair can be caught in moving parts.
- If devices are provided for the connection of dust extraction and collection facilities ensure that these are connected and properly used. Use of these devices can reduce dust-related hazards.

Power tool use and care

- Do not force the power tool. Use the correct power tool for your application. The correct power tool will do the job better and safer at the rate for which it was designed.

- Do not use the power tool if the switch does not turn it on and off. Any power tool that cannot be controlled with the switch is dangerous and must be repaired.
- Disconnect the plug from the power source before making any adjustments, changing accessories, or storing power tools. Such preventive safety measures reduce the risk of starting the power tool accidentally.
- Store idle power tools out of the reach of children and do not allow persons unfamiliar with the power tool or these instructions to operate the power tool. Power tools are dangerous in the hands of untrained users.
- Maintain power tools. Check for misalignment or binding of moving parts, breakage of parts and any other condition that may affect the power tool's operation. If damaged, have the power tool repaired before use. Many accidents are caused by poorly maintained power tools.
- Keep cutting tools sharp and clean. Properly maintained cutting tools with sharp cutting edges are less likely to bind and are easier to control.
- Use the power tool, accessories and tool bits etc., in accordance with these instructions and in the manner intended for the particular type of power tool, taking into account the working conditions and the work to be performed. Use of the power tool for operations different from intended could result in a hazardous situation.

Service

- Have your power tool serviced by a qualified repair personnel using only identical replacement parts. This will ensure that the safety of the power tool is maintained.

Additional safety rules for electric chain saws

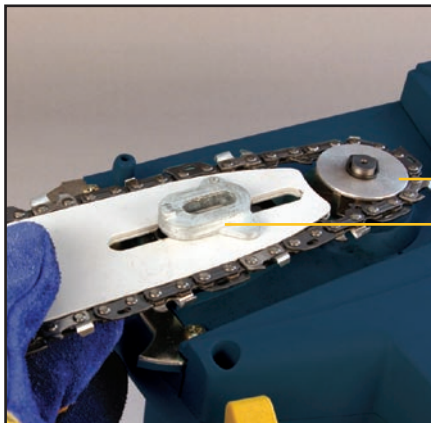
Note. For safety reasons the electric chain saw is shipped with the chain brake fully engaged. This brake must be released before the saw becomes operational.

- Never cut into the ground.
- Never cut into wire fences.
- Never cut into samplings.
- Never cut into prepared wood.
- Use the Chainsaw to cut only wood.
- Remove the plug from the mains immediately if the supply cable is damaged or cut.
- Use the bar cover when moving the electric chain saw away from the working site.
- During transport the brake must be applied to avoid accidental start-up.
- Make sure the tool is disconnected when checking, tightening, changing or cleaning the chain.
- Always disconnect the electric chain saw when not in use, to avoid damage to third persons.
- Do not expose the electric chain saw to rain or windy conditions or in poor light.
- Find a suitable position before beginning work.
- When working on slopes, the saw operator must stand beside or above the wood to cut, i.e. felled trees.
- Use the electric chain saw holding it firmly with both hands.
- Make a wedge-shaped cut before felling the tree, then the felling cut leaving a hinge for the felling direction.
- Beware of any falling branches after felling operations.
- Beware of wood splinters when cutting chopped wood.
- Ensure your chain saw is suitable for the job.
- Never work above shoulder level or reach out to cut a branch: ensure you have stable footings at all times.

- *It is advisable to provide a support for the electric chain saw when cutting branches. Do not cut using the bar point and beware of branches under tension.*
- *Children under 18 must not use electric chain saws.*
- *The machine must not work in an explosive environment.*
- *Keep people away from the electric chain saw when in use.*
- *Check the following conditions before beginning work:*
 - *There should be no people in the felling area.*
 - *Make sure there is a second person within calling distance.*
 - *The working area should be free from obstacles.*
- *Wear suitable clothes which do not hinder movement.*
- *Use specific protections during operations involving head, hands, feet, eyes and ears.*
- *It is recommended the use of a helmet with a visor during felling, branch cutting and chopping operations.*
- *Wear gloves with an external protection when using the electric chain saw.*
- *Use ear protection to prevent hearing injuries.*
- *Wear safety boots when using the electric chainsaw.*

Know your product

1. Front handle
2. Front hand guard
3. Oil tank cap
4. Chain clamp/lock knob
5. Chain
6. Bar
7. Power cord
8. Rear handle
9. Chain wheel
10. Bar adjustment block
11. Cover
12. Bucking spikes
13. On/off switch
14. Lock-off button (not shown)
15. Bar cover
16. Oil level indicator
17. Cord retention hook

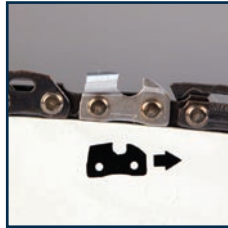


Mounting the chain bar

1. Place the chainsaw with the motor on a cover to avoid any mess from the oil.
2. Place the chain (5) in the groove of the bar (6). Pay attention to the correct running direction. As shown by the running direction symbol.
3. Place the chain links around the chain wheel (9) and put the bar on such that the two locating pegs fit into the slotted hole of the bar.
4. Prior to fitting the cover (11) it is important to set the chain adjusting cam. To do this fully depress the chain clamp/lock knob and rotate until the cam is aligned with the arrow as pictures in Fig 1.
5. To fit the cover (15) insert the back locating hook into the slot provided near the oil indicator and lower the cover over the bar ensuring the clamp bolt of the cover passes through the centre of the bar adjustment block (10) and rotate the clamp/lock knob until it just starts to become tight.

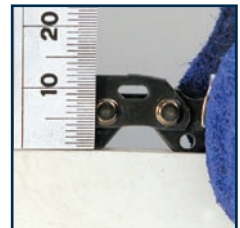
Note. Do not push the clamp/lock knob while rotating. Proceed as detailed below to set the chain tension.

6. Screw in the chain clamp/lock knob tightly.



Setting the chain saw tension

1. Loosen the chain clamp/lock knob by turning it anti-clockwise approximately 1-2 turns.
2. Press the chain clamp/lock knob inwards and turn it in a clockwise direction until the correct chain tension is reached.
3. The correct tension is reached when the chain in the middle of the bar can only be raised by approximately 3-4mm.
4. Release the chain clamp/lock knob and ensure it springs away from the housing slightly.
5. Tighten the chain clamp/lock knob by turning it clockwise without pressing it inwards.
6. Check whether all chain links lie correctly in the guide tracks of the bar.



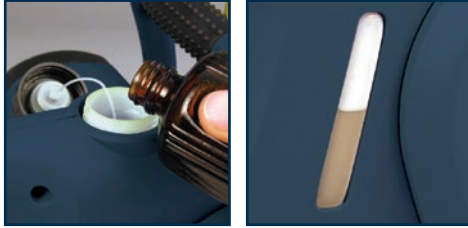
Oil filling

Note. The chain saw is shipped without oil in it. The chain saw must never be used without oil or with an oil level that is below the indicator.

Warning. Always ensure that the chainsaw is switched off and the plug is removed from the power point before making any adjustments.

1. Remove oil tank cap (3) and fill the tank with chain oil. Replace the oil tank cap and tighten well.
2. Lubrication is activated only when the machine is working.
3. Check the oil level periodically, through the oil level indicator (16).





4. Use good quality ecological chain oil to ensure long life for the moving parts. Do not use recovered or preused oil containing impurities.
Make sure that no dirt gets into the oil tank.

Checking the automatic oil function

Check the automatic operation of the chain lubrication by pointing the tip of the switched-on saw towards a piece of paper laying on the ground. If a patch of oil appears and becomes larger, then the automatic oil function is working. If there are no traces of oil even though the oil tank is full, then the automatic oil function is not working.

If the automatic oil function is not working, remove the chain bar and clean out the oil ways of the chainsaw and chain bar. On reassemble if the chainsaw is still not working take it to an autorised service centre.

Avoiding kickback

- Be constantly aware of the position of the upper quadrant of the blade tip. This is the part that triggers a kickback when it hits resistance.
- Never engage the upper quadrant of the guide bar with whatever you are cutting and avoid contact with any hidden branches or obstructions. Ensure there is a clear work area.
- Always clear away brush, vegetation and any obstructing debris before attempting a cut that might trigger a kickback.
- Avoid cuts that will cause the chainsaw to jam in a tree trunk or limb.

Avoid jamming

Always cut into the compression wood first until the cut starts to close. Always make the compression cut beneath if the log or limb is suspended from one end, and on top if it is supported at both ends. Cut from the other side towards the compression cut. Make a habit of using a wedge to prevent the compression cut jamming tight on the chainsaw blade.

Extension cord support

During use of the chainsaw, the extension cord will continually be pulled as you move from one area to another. A cord retention hook (17) has been provided on the housing of the chainsaw to assist in preventing the electrical connection between the extension cord and chainsaw plug being forced apart.

Note. The support is for the extension cord, and not the cable from the chainsaw.

1. To fit the extension cord to the support, make a tight loop in the extension cord, approximately 300mm from the socket on the extension cord.
2. Fit the loop into the rectangle recess in the back portion of the chainsaw.
3. Push the loop all the way through the housing by approximately 25mm.
4. Push each side of the loop downwards so each side of the loop fits over the cord retention hook.
5. To seat the cable firmly, gently pull one of the two lengths of extension cable on the right hand side of the chainsaw.
6. After, and only after the cable is correctly seated, plug the chainsaw plug into the socket of the extension cable.

Before start-up

1. Check the tool and cable are in good working order before starting the chain saw.
2. Make sure that the chain lubrication is working and check the oil level.
3. Check the chain tension and the operation of the chain brake.



Start up

1. Remove the bar cover.
2. Release the chain brake by pulling the front hand guard (2), firmly towards the back of the electric chain saw until a click is heard. To check the chain brake has been released, you should be able to move the chain by hand.
3. Connect the cable to the power.



Note. Ensure the brake is working efficiently, check its operation every time you use the chain saw before commencing work with it.

WARNING. The on/off switch (13) must never be depressed before pulling back the front hand guard.

4. Hold the electric chain saw by its grip with both hands.
5. To Start the chainsaw, press the lock-off button (14) in and pull on the trigger switch.
6. To stop the chain saw, release the trigger switch.

WARNING. Hold the electric chain saw with both hands until the chain is completely still.

Operating the electric chain saw

Safe chainsaw operation

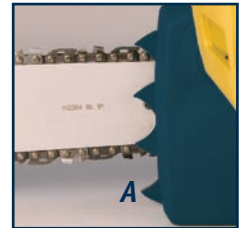
While cutting, always:

- Run the chainsaw motor at full revs. This makes the job safer, as there is less chance of pull-in or kick-back.
- Position your body to the left of the chainsaw so if it kicks back uncontrollably, it goes over your right shoulder.
- Keep a firm grip with your left hand on the front handle, with your thumb securely below the handle. The swivel of your wrist in a kick-back situation will activate the chain brake.
- Make sure the chain is tensioned correctly.
- Observe the size of wood shavings, if they become dusty your chain could need sharpening.

Cross cutting

WARNING. Do not touch protruding branches with the bar tip to prevent kickback.

1. Fit the bucking spike in the bark at point A.
2. Using point A as a pivot point lift the rear of the chainsaw so the chain enters the wood to be cut.
3. Pivot and repeat the operation until the trunk has been cut completely.
4. Use the central part of the bar and never the tip for cutting purposes.



Branch cutting

Stand opposite the branches to be cut. Use the section of the bar as close to the chainsaw as possible, never use the tip of the bar. Perform the cutting operation downwards.

Chain sharpening and maintenance

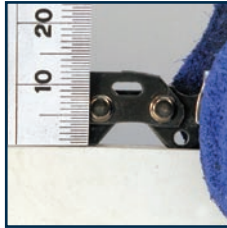
WARNING. Always ensure that the tool is switched off and the plug is removed from the power point before making any adjustments or maintenance procedures.

The chain requires sharpening when the chain saw does not cut appropriately, this operation is performed as follows.



1. Extend the chain bar.
2. Fix the bar in a vice so that the chain can slide.

3. Fit the file in a file holder (not included) and place it over the tooth at 35°.
4. File forward only until all the worn part of the tooth has been eliminated.



5. Count the file movements made on the first tooth and do the same on all the others, both right and left.
6. After some sharpening the delimiting device on the chain will exceed the height of the cutting teeth, file the exceeding part by means of a flat file to round off the depth delimiting device.
7. Ensure that the chain is replaced before stretching to exceed the maximum adjustment of the chain saw bar.
8. 'Deep' Filing should be performed with an electric file. We advise to use a service centre to perform this operation.
9. Ensure that the chain slides smoothly over the bar when pulled with hands. Periodically sharpen chain and check the chain tension.



10. Bars with sprockets need frequent greasing which can be performed as follows:

- Fill a syringe or similar device with grease for bearings.
- Each time the saw is used grease through the hole provided near the bar tip until the grease penetrated onto the tip.
- After 3 times of sharpening the chain your self have it professionally sharpened. This will ensure that all the teeth are even.

To avoid damage to the motor, do not keep the chain saw running if the chain is lodged in the wood.

Chainsaw maintenance

WARNING. Always ensure that the tool is switched off and the plug is removed from the power point before making any adjustments or maintenance procedures.

- Always keep the air holes clean on the electric chain saw body. They tend to become clogged with sawdust during use and this affects the efficiency of cooling, causing overheating of the motor the other fundamental parts of the electric chain saw.
- Do not operate the chainsaw with the air intake on the ground as this will draw foreign particles into the motor area and damage the windings of the motor.
- Regularly check to see if any dust or foreign matter has entered the grills near the motor and around the on/off switch. Use a soft brush to remove any accumulated dust. Wear safety glasses to protect your eyes whilst cleaning.



- *If the body of the tool needs cleaning, wipe it with a soft damp cloth. A mild detergent can be used but nothing like alcohol, petrol or other cleaning agent.*
- *Never use caustic agents to clean plastic parts.*
- *Turn the bar periodically to use both the sides so that it wears evenly.*
- *It is essential that motor cooling vents are kept free from a build-up of sawdust and this decreases the engines tools cooling capacity and causes overheating damage to the motor as well as other important equipment, oil pump etc. It is recommended that this is carried out after every use.*
- *Clean the guide and oil holes periodically.*
- *Deburr the race sides periodically with a flat file. Time may cause any "Burs" to detach and damage the bar.*
- *The bar needs to be evened with a flat file if one of the races is higher than another and then smoothed with a file and fine sandpaper. If races are considerably worn, check that the height is always greater than the chains transmission links so that the latter do not touch the bottom. Replace the bar if this should occur.*

The chainsaw should be periodically serviced to check the correct operation of the chain, chain drive, motor and brake.

CAUTION. *Water must never come into contact with the tool.*

First time user

If you are not familiar with chain saws and the felling of trees, it is recommended that you obtain informed instructions in addition to reading this manual fully. We also recommend as a minimum that you practice cutting logs on a saw-horse or log cradle.

General inspection

Regularly check that all the fixing screws are tight. They may vibrate loose over time.

Power cord maintenance

If the supply cord needs replacing, the task must be carried out by the manufacturer, the manufacturer's agent, or an authorised service centre in order to avoid a safety hazard.

Storage

- *Clean the electric chain saw with a dry cloth, do not use aggressive cleaning fluids.*
- *Replace the electric chain saw blade cover and store in a dry place. Do not store in hot, dry boiler rooms or other damp places.*

GMC customer assist

If your product needs repairing, replacing, technical service or you simply need help or advice, please contact us on our Customer Assist Line 1300 880 001 (Australia) or 0800 445 721 (New Zealand).

For prompt service we suggest you log your service request online at www.gmcservice.com.au. Should you not have access to the Internet, please contact our service department on 1300 880 001 (Australia) or 0800 445 721 (New Zealand). 7am – 7pm, 7 days a week (AEST).

Please note that if repair or replacement is required, you must provide a valid original purchase receipt.

You will need the following details at hand to log your service request;

Personal details: First & Last name, address, pick up address, contact phone numbers, email address

Product details: Product number, date of purchase, retailer bought from, State & postcode, receipt number, reason for the request, copy of official purchase receipt

Attach your purchase receipt and save with this Manual for future reference.

Please refer to our website www.gmcompany.com for full GMC warranty Terms and Conditions.

GMC[®]
GLOBAL MACHINERY COMPANY

Attach Your
Receipt Here

Free Manuals Download Website

<http://myh66.com>

<http://usermanuals.us>

<http://www.somanuals.com>

<http://www.4manuals.cc>

<http://www.manual-lib.com>

<http://www.404manual.com>

<http://www.luxmanual.com>

<http://aubethermostatmanual.com>

Golf course search by state

<http://golfingnear.com>

Email search by domain

<http://emailbydomain.com>

Auto manuals search

<http://auto.somanuals.com>

TV manuals search

<http://tv.somanuals.com>