

# BENCH GRINDER STAND

BGSTAND  
INSTRUCTION MANUAL



**GMC**<sup>®</sup>  
**GLOBAL MACHINERY COMPANY**

Black	Magenta	Code: BGSTAND		
Cyan	Yellow	Date: 061114	Edition: 09	Op: DCR
用本处所有显示的颜色打印包装资料。Print artwork using ALL inks shown here.				

# Contents

<b>Warranty</b>	<b>2</b>
<b>Introduction</b>	<b>3</b>
<b>Environmental protection</b>	<b>3</b>
<b>Specifications</b>	<b>3</b>
<b>General safety rules</b>	<b>3</b>
<b>Additional safety rules for bench grinder stands</b>	<b>5</b>
<b>Additional safety rules for bench grinders</b>	<b>5</b>
<b>Unpacking</b>	<b>6</b>
<b>Assembly</b>	<b>6</b>
<b>Required tools</b>	<b>6</b>
<b>Components</b>	<b>7</b>
<b>Know your product</b>	<b>8</b>
<b>Assembly</b>	<b>9</b>
<b>Adjusting the heigh</b>	<b>10</b>
<b>Cleaning</b>	<b>10</b>
<b>General inspection</b>	<b>10</b>
<b>Troubleshooting</b>	<b>10</b>

## Warranty Power Tools

Whilst every effort is made to ensure your complete satisfaction with this tool, occasionally, due to the mass manufacturing techniques, a tool may not live up to our required level of performance and you may need the assistance of our service department.

This product is warranted for a 2-year period for home domestic use from the date of the original purchase. If found to be defective in materials or workmanship, the tool or the offending faulty component will be repaired or replaced free of charge with another of the same item. A small freight charge may apply. Proof of purchase is essential. We reserve the right to reject any claim where the purchase cannot be verified.

This warranty does not include damage or defects to the tool caused by or resulting from abuse, accidents, alterations or commercial or business use. It also does not cover any bonus items or included accessories. Only the powertool is covered under this warranty.

With continuing product development, changes may have occurred which render the product received slightly different to that shown in this instruction manual.

Please ensure that you store your receipt in a safe place.

Conditions apply to the above warranty. For full details of the warranty terms and conditions please refer to our website – [www.gmcompany.com](http://www.gmcompany.com)

For prompt service we suggest you log your service request online - [www.gmcservice.com.au](http://www.gmcservice.com.au), should you not have access to the internet, please contact our service department on 1300 880 001 (Australia) or 0800 445 721 (New Zealand).

## Introduction

Your new GMC power tool will more than satisfy your expectations. It has been manufactured under stringent GMC Quality Standards to meet superior performance criteria.

You will find your new tool easy and safe to operate, and, with proper care, it will give you many years of dependable service.

**CAUTION.** Carefully read through this entire Instruction Manual before using your new GMC Power Tool. Take special care to heed the Cautions and Warnings.

Your GMC power tool has many features that will make your job faster and easier. Safety, performance, and dependability have been given top priority in the development of this tool, making it easy to maintain and operate.

## Environmental protection



Recycle unwanted materials instead of disposing of them as waste. All tools, hoses and packaging should be sorted, taken to the local recycling centre and disposed of in an environmentally safe way.

## Specifications

Number of heights:	6
Max. Height:	900mm (90cm)
Min. Height:	730mm (73cm)
Compatible GMC Bench Grinders:	BG612HPL BG834HPL BG200A BG150A NTS2000A BG150VS
Weight:	13.0kg

## General safety rules

**WARNING.** Read all instructions. Failure to follow all instructions listed below may result in electric shock, fire and/or serious injury. The term "power tool" in all of the warnings listed below refers to your mains operated (corded) power tool or battery operated (cordless) power tool.

### Save these instructions

#### 1. Work area

**a. Keep work area clean and well lit.** Cluttered and dark areas invite accidents.

**b. Do not operate power tools in explosive atmospheres,** such as in the presence of flammable liquids, gases or dust. Power tools create sparks which may ignite the dust or fumes.

**c. Keep children and bystanders away while operating a power tool.** Distractions can cause you to lose control.

#### 2. Electrical safety

**a. Power tool plugs must match the outlet. Never modify the plug in any way.** Do not use any adapter plugs with earthed (grounded) power tools. Unmodified plugs and matching outlets will reduce risk of electric shock.

**b. Avoid body contact with earthed or grounded surfaces such as pipes, radiators, ranges and refrigerators.** There is an increased risk of electric shock if your body is earthed or grounded.

**c. Do not expose power tools to rain or wet conditions.** Water entering a power tool will increase the risk of electric shock.

**d. Do not abuse the cord. Never use the cord for carrying, pulling or unplugging the power tool.** Keep cord away from heat, oil, sharp edges or moving parts. Damaged or entangled cords increase the risk of electric shock.

**e. When operating a power tool outdoors, use an extension cord suitable for outdoor use.** Use of a cord suitable for outdoor use reduces the risk of electric shock.

### 3. Personal safety

- a. **Stay alert, watch what you are doing and use common sense when operating a power tool.** Do not use a power tool while you are tired or under the influence of drugs, alcohol or medication. A moment of inattention while operating power tools may result in serious personal injury.
- b. **Use safety equipment. Always wear eye protection.** Safety equipment such as dust mask, non-skid safety shoes, hard hat, or hearing protection used for appropriate conditions will reduce personal injuries.
- c. **Avoid accidental starting.** Ensure the switch is in the off position before plugging in. Carrying power tools with your finger on the switch or plugging in power tools that have the switch on invites accidents.
- d. **Remove any adjusting key or wrench before turning the power tool on.** A wrench or a key left attached to a rotating part of the power tool may result in personal injury.
- e. **Do not overreach.** Keep proper footing and balance at all times. This enables better control of the power tool in unexpected situations.
- f. **Dress properly. Do not wear loose clothing or jewellery.** Keep your hair, clothing and gloves away from moving parts. Loose clothes, jewellery or long hair can be caught in moving parts.
- g. **If devices are provided for the connection of dust extraction and collection facilities, ensure these are connected and properly used.** Use of these devices can reduce dust related hazards.

### 4. Power tool use and care

- a. **Do not force the power tool.** Use the correct power tool for your application. The correct power tool will do the job better and safer at the rate for which it was designed.
- b. **Do not use the power tool if the switch does not turn it on and off.** Any power tool that cannot be controlled with the switch is dangerous and must be repaired.

- c. **Disconnect the plug from the power source before making any adjustments, changing accessories, or storing power tools.** Such preventive safety measures reduce the risk of starting the power tool accidentally.
  - d. **Store idle power tools out of the reach of children and do not allow persons unfamiliar with the power tool or these instructions to operate the power tool.** Power tools are dangerous in the hands of untrained users.
  - e. **Maintain power tools. Check for misalignment or binding of moving parts, breakage of parts and any other condition that may affect the power tools operation.** If damaged, have the power tool repaired before use. Many accidents are caused by poorly maintained power tools.
  - f. **Keep cutting tools sharp and clean.** Properly maintained cutting tools with sharp cutting edges are less likely to bind and are easier to control.
  - g. **Use the power tool, accessories and tool bits etc., in accordance with these instructions and in the manner intended for the particular type of power tool, taking into account the working conditions and the work to be performed.** Use of the power tool for operations different from those intended could result in a hazardous situation.
- ### 5. Service
- a. **Have your power tool serviced by a qualified repair person using only identical replacement parts.** This will ensure that the safety of the power tool is maintained.

## **Additional safety rules for bench grinder stands**

**WARNING!** DO NOT fit the bench grinder to the stand until the stand is bolted through or into the floor. This stand is not designed to be a free standing stand, and the base must be secured to the floor or area where the stand will be positioned. Do not fit the grinder or operate the grinder without the base being firmly attached as it will tip over.

## **Additional safety rules for bench grinders**

- Replace cracked wheel immediately.
- Always use guards and eye shields.
- Do not overtighten wheel nut.
- Use only flanges furnished with the grinder.
- Adjust distance between wheel and work rest to maintain 1/16 inch or less separation as the diameter of the wheel decreases with use.
- Frequently clean grinding dust from beneath grinder.
- Always remove the plug from the mains socket before making any adjustments or maintenance, including changing the wheel.
- Always wear eye protection and check that the eye shields on the grinder are properly adjusted.
- Always turn the grinder off when it is not in use and never leave it unattended without first switching off and removing the power plug. Never leave the grinder until the grinding wheels have come to a complete stop.
- Make sure that any replacement wheel is rated at 3400RPM or higher.
- Do not let anyone under 18 years operate this tool.
- Rags, cloths, cord, string and the like should never be left around the work area.

- If you are interrupted when operating the tool, complete the process and switch off before looking up.
- Periodically check that all nuts, bolts and other fixings are properly tightened.
- Do not use a wheel that has received a blow, especially to the side of the wheel.
- Replace a cracked or suspect wheel.
- Always allow a new wheel to run for a few minutes at full speed before using it. Stand to one side at start up.
- Check that the wheel rotates freely each time before start up.
- Do not use the grinder unless all the guards are properly fitted and secure.
- Check that the tool rests are properly adjusted before commencing use.
- Do not overload the grinder. Allow the grinder to run at full speed, or close to full speed during use.
- Never apply excessive pressure to the wheel. It might shatter causing personal injury.
- Make sure that the wheel is not in contact with the work when you start the grinder.
- When using the grinder, use safety equipment including safety goggles or shield, ear protection, dust mask and protective clothing including safety gloves.

### **Wear safety goggles**

### **Wear ear protection**

### **Wear a breathing mask**

## Unpacking

Due to modern mass production techniques, it is unlikely that your GMC Power Tool is faulty or that a part is missing. If you find anything wrong, do not operate the tool until the parts have been replaced or the fault has been rectified. Failure to do so could result in serious personal injury.

## Assembly

The BGSTAND needs to be assembled prior to use, assembly will take approximately 20 minutes.

## Required Tools

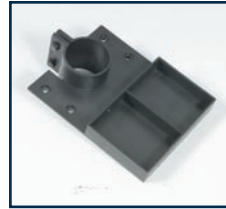
The following tools are required:

- 5mm hex key (supplied)
- 8mm hex key (supplied)
- Phillips head screwdriver (not supplied)
- Wrench (not supplied)

## Components

The BGSTAND is supplied with the following components:

1. Base
2. Fixed support pole
3. Adjustable support pole
4. Accessory storage compartment
5. Wheel storage compartments
6. Bench grinder support plate
7. Pan head tapping screws (x4)
8. Tension handle
9. Hook, pan head screw and flat washer
10. 8mm and 5mm hex keys
11. M10 x 50mm bolts with flat washers, spring washers and nuts (x4)
12. M6 x 40mm bolts with flat washers, spring washers and nuts (x4)



## Know your product

Before using the tool, familiarize yourself with all the operating features and safety requirements.

Use the tool and accessories only for the applications intended. All other applications are expressly ruled out.

1. Base
2. Fixed support pole
3. Adjustable support pole
4. Accessory storage compartment
5. Wheel storage compartment (x2)
6. Bench grinder support plate
7. Pan head tapping screws (x4)
8. Tension handle
9. Hook
10. 8mm and 5mm hex keys





## Assembly

1. Place the fixed support pole into the base.



2. Secure the fixed support pole to the base by tightening the 2 recessed hex screws in the base, use the 5mm hex key to tighten these screws.



3. Place the adjustable support pole into the fixed support pole.
4. Position the adjustable support pole so that the slot in the pole is in line with the Phillips head screw.
5. Using a Phillips head screwdriver tighten the screw so that it extends into the recess.



6. Lower the adjustable support pole and let it rest on the Phillips head screw for support.
7. Attach the tension handle to the front of the fixed support pole and tighten, this will hold the adjustable support pole in position.



8. Fit the accessory storage compartment over the adjustable support pole and lower down onto the fixed support pole.

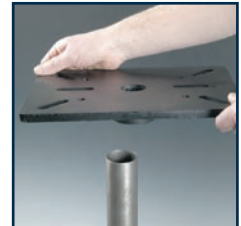


9. With the accessory storage compartment positioned at the top of the fixed support pole tighten the 2 hex bolts to secure the compartment in position.

10. Fit the wheel storage compartments onto the accessory storage compartment and using a Phillips head screwdriver tighten the 4 pan head tapping screws to secure the wheel storage compartments in place.



11. Fit the bench grinder support plate onto the top of the adjustable support pole.



12. Secure the bench grinder support plate in position by tightening the 2 recessed hex screws located underneath the plate.



- Position the hook on the front of the bench grinder support plate and secure using the pan head screw and flat washer.



**WARNING!** DO NOT fit the bench grinder to the stand until the stand is bolted through or into the floor. This stand is not designed to be a free standing stand, and the base must be secured to the floor or area where the stand will be positioned. Do not fit the grinder or operate the grinder without the base being firmly attached as it will tip over.

### Adjusting the height

**WARNING.** Always ensure that the bench grinder is removed from the bench grinder support plate before adjusting the height.

- Loosen the tension handle.
- Whilst holding the bench grinder support plate rotate the support plate in a clockwise direction to disengage the height location.
- Raise or lower the support plate to the desired height.
- Rotate into the nearest height location by rotating the support plate in an anti-clockwise direction.
- Tighten the tension handle to secure the pole and support plate in position.

**IMPORTANT.** It is important to ensure the adjustable stand is correctly located into one of the pre set height positions. Do not attempt to use the stand if it is not correctly located.

### Cleaning

- Re-lubricate all moving parts at regular intervals.
- Never use caustic agents to clean plastic parts.

**CAUTION.** Do not use cleaning agents to clean the plastic parts of the tool. A mild detergent on a damp cloth is recommended.

### General inspection

Regularly check that all the fixing screws are tight. They may vibrate loose over time.

### Troubleshooting

Trouble	Problem	Suggested remedy
Vibration or abnormal noise	Loose parts	Check to see that all screws are secure.



# GMC customer assist

Attach Your  
Receipt Here

**If your product needs repairing, replacing, technical service or you simply need help or advice, please contact us on our Customer Assist Line 1300 880 001 (Australia) or 0800 445 721 (New Zealand).**

For prompt service we suggest you log your service request online at [www.gmcservice.com.au](http://www.gmcservice.com.au). Should you not have access to the Internet, please contact our service department on **1300 880 001 (Australia) or 0800 445 721 (New Zealand)**.  
**7am – 7pm, 7days a week (AEST).**

**Please note that if repair or replacement is required, you must provide a valid original purchase receipt.**

You will need the following details at hand to log your service request;

**Personal details:** First & Last name, address, pick up address, contact phone numbers, email address

**Product details:** Product number, date of purchase, retailer bought from, State & postcode, receipt number, reason for the request, copy of official purchase receipt

Attach your purchase receipt and save with this Manual for future reference.

Please refer to our website [www.gmcompany.com](http://www.gmcompany.com) for full GMC warranty Terms and Conditions.

**GMC**<sup>®</sup>  
**GLOBAL MACHINERY COMPANY**

## Free Manuals Download Website

<http://myh66.com>

<http://usermanuals.us>

<http://www.somanuals.com>

<http://www.4manuals.cc>

<http://www.manual-lib.com>

<http://www.404manual.com>

<http://www.luxmanual.com>

<http://aubethermostatmanual.com>

Golf course search by state

<http://golfingnear.com>

Email search by domain

<http://emailbydomain.com>

Auto manuals search

<http://auto.somanuals.com>

TV manuals search

<http://tv.somanuals.com>