



Please keep this instruction sheet for future reference,
as it contains important information.

Requires three "C" (LR14) **alkaline** batteries (not included).

Adult assembly is required.

Tool needed for battery installation: Phillips screwdriver (not included).



www.fisher-price.com

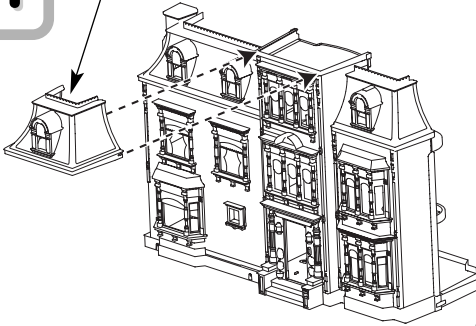
Sweet Sounds™ Dollhouse

Assembly

Consumer Information

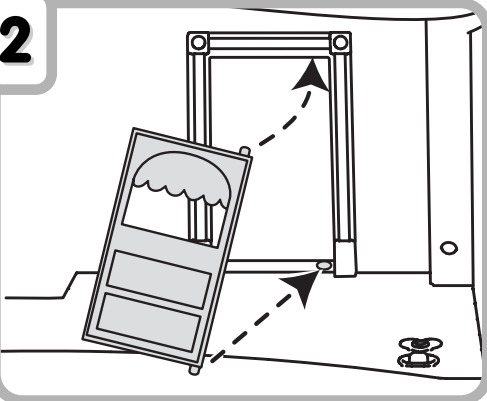
1

Attic Roof



- Slide the attic roof onto the top of the dollhouse until it “snaps” in place.

2



- Insert the peg at the top of the door into the hole at the top of the doorframe. Bend the door slightly and insert the bottom peg into the hole in the bottom of the doorframe.

Questions? We'd like to hear from you!

Call Fisher-Price® Consumer Relations, toll-free at **1-800-432-5437**, 8 AM - 6 PM EST Monday through Friday. Hearing-impaired consumers using TTY/TDD equipment, please call 1-800-382-7470. Or, write to: Fisher-Price® Consumer Relations, 636 Girard Avenue, East Aurora, New York 14052.

For countries outside the United States:

CANADA Questions? **1-800-567-7724**. Mattel Canada Inc., 6155 Freemont Blvd., Mississauga, Ontario L5R 3W2.

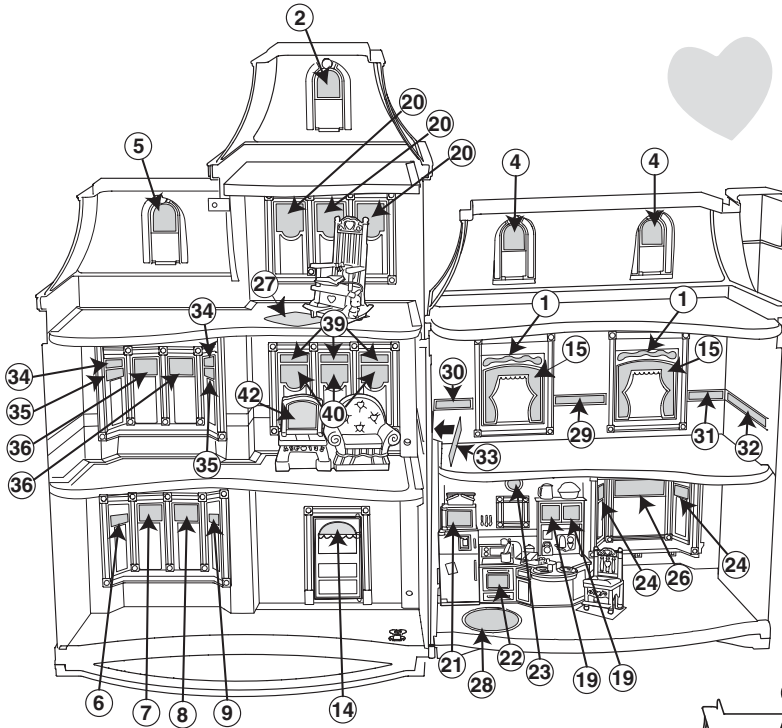
GREAT BRITAIN Mattel UK Ltd, Vanwall Business Park, Maidenhead SL6 4UB. Helpline: 01628 500302.

AUSTRALIA Mattel Australia Pty. Ltd., 658 Church Street, Locked Bag #870, Richmond, Victoria 3121 Australia. Consumer Advisory Service 1300 135 312.

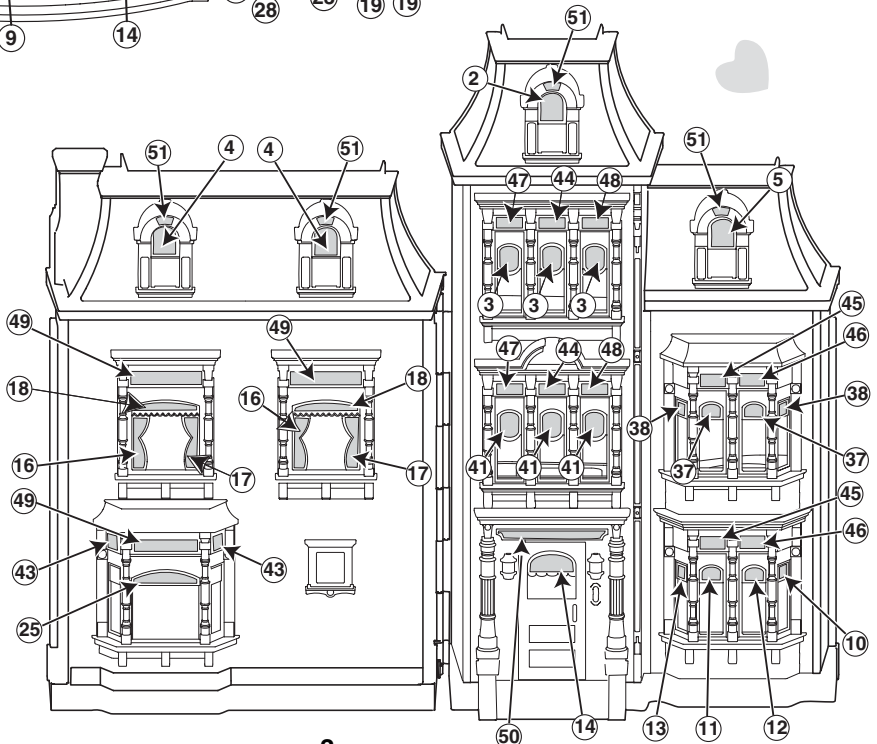
NEW ZEALAND 16-18 William Pickering Drive, Albany 1331, Auckland.

ASIA Mattel East Asia Ltd, Room 1106, South Tower, World Finance Centre, Harbour City, Tsimshatsui, HK, China.

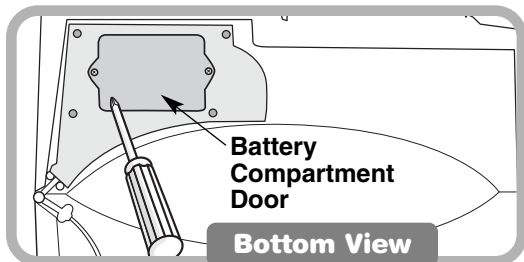
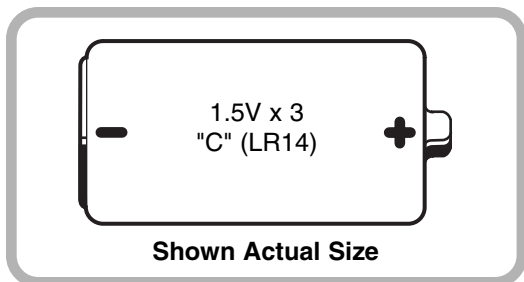
Label Decoration



- Make sure the areas where the labels will be applied are clean and dry. Wash your hands before applying the labels.
- Apply the labels as shown in the illustrations.
- The label sheet also contains several extra labels you can place where ever you like.
- Apply the top corners of a label first and smooth downward to remove air bubbles.
- For best results, avoid repositioning a label once it has been applied.



Battery Installation



- Locate the battery compartment on the bottom of the toy.
- Loosen the screws in the battery compartment door with a Phillips screwdriver. Remove the battery compartment door.
- Insert three "C" (LR14) **alkaline** batteries.

Hint: We recommend using **alkaline** batteries for longer battery life.

- Replace the battery compartment door and tighten the screws with a Phillips screwdriver. Do not over-tighten.

Battery Safety Information

Batteries may leak fluids that can cause a chemical burn injury or ruin your toy. To avoid battery leakage:

- Do not mix old and new batteries or batteries of different types: alkaline, standard (carbon-zinc) or rechargeable (nickel-cadmium).
- Insert batteries as indicated on the battery compartment door.
- Remove batteries during long periods of non-use. Always remove exhausted batteries from the toy. Dispose of batteries safely. Do not dispose of batteries in a fire. The batteries may explode or leak.
- Never short-circuit the battery terminals.
- Use only batteries of the same or equivalent type, as recommended.
- Do not charge non-rechargeable batteries.
- Remove rechargeable batteries from the toy before charging.
- If removable, rechargeable batteries are used, they are only to be charged under adult supervision.

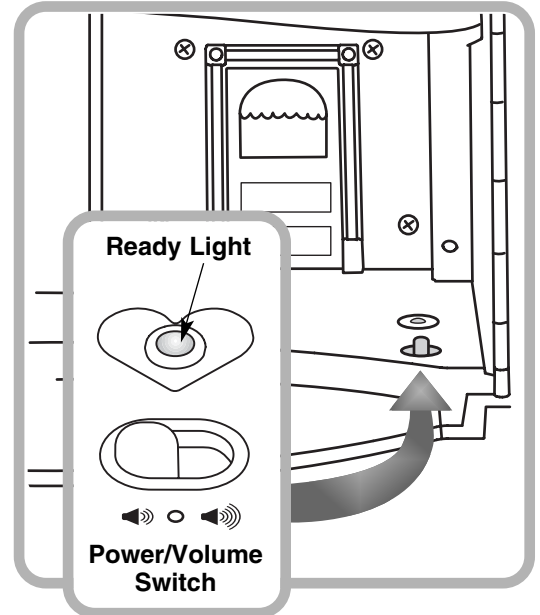
Fun Family Phrases

Place mom, dad or the little girl in different areas of the house to hear them talk, sing, tell jokes and laugh together. Hear more than 200 starter phrases that prompt your child's imagination and encourage role-playing.

Place a figure in any of these locations. Match the hearts on the back of the figures, cat and tape recorder with the hearts in the chairs.



Power/Volume Switch



- Locate the power/volume switch inside the dollhouse near the door. Slide the switch to either on with low volume ; or on with high volume . You will hear a chime and the ready light will turn on.

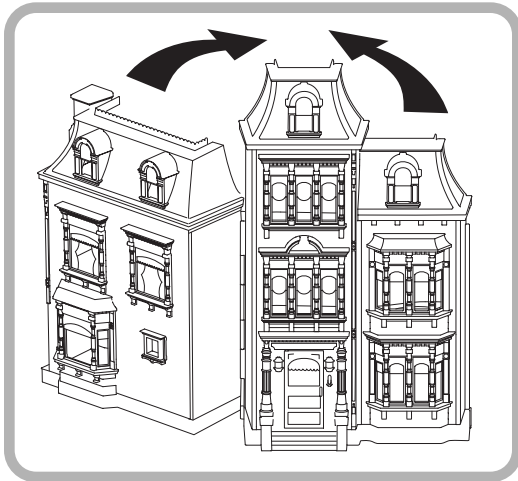
Hint: If your child does not actively play with this toy for a few minutes, it turns off automatically (sleep mode) and the ready light turns off. Slide the power/volume switch to the off position then back on again to restart.

- When your child is finished playing with this toy, slide the power/volume switch to the off position .

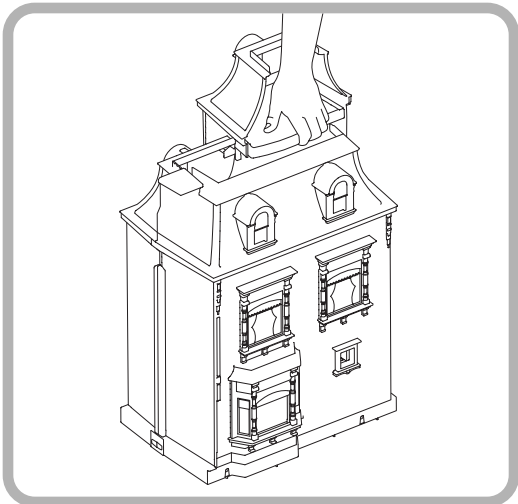
Hints:

- For best performance, when placing a figure in a chair, be sure its back is in contact with the chair.
- After a figure finishes speaking, remove the figure from its chair for a few seconds, then place it back again to hear more phrases.

Storage



- Place the family and their accessories inside the house. Close the two halves of the house together and press so that they “snap” securely.



- After the dollhouse is snapped closed, the product can be carried by an adult. Grasp the dollhouse by the attic floor.

Care

- Wipe the toy with a clean cloth dampened with a mild soap and water solution.
- Do not immerse the toy.

FCC Note (United States Only)

Note: This equipment has been tested and found to comply with the limits for a Class B digital device, pursuant to Part 15 of the FCC Rules. These limits are designed to provide reasonable protection against harmful interference in a residential installation. This equipment generates, uses and can radiate radio frequency energy and, if not installed and used in accordance with the instructions, may cause harmful interference to radio communications. However, there is no guarantee that interference will not occur in a particular installation. If this equipment does cause harmful interference to radio or television reception, which can be determined by turning the equipment off and on, the user is encouraged to try to correct the interference by one or more of the following measures:

- Reorient or relocate the receiving antenna.
- Increase the separation between the equipment and receiver.
- Consult the dealer or an experienced radio/TV technician for help.

Note: Changes or modifications not expressly approved by the manufacturer responsible for compliance could void the user's authority to operate the equipment.

Free Manuals Download Website

<http://myh66.com>

<http://usermanuals.us>

<http://www.somanuals.com>

<http://www.4manuals.cc>

<http://www.manual-lib.com>

<http://www.404manual.com>

<http://www.luxmanual.com>

<http://aubethermostatmanual.com>

Golf course search by state

<http://golfingnear.com>

Email search by domain

<http://emailbydomain.com>

Auto manuals search

<http://auto.somanuals.com>

TV manuals search

<http://tv.somanuals.com>